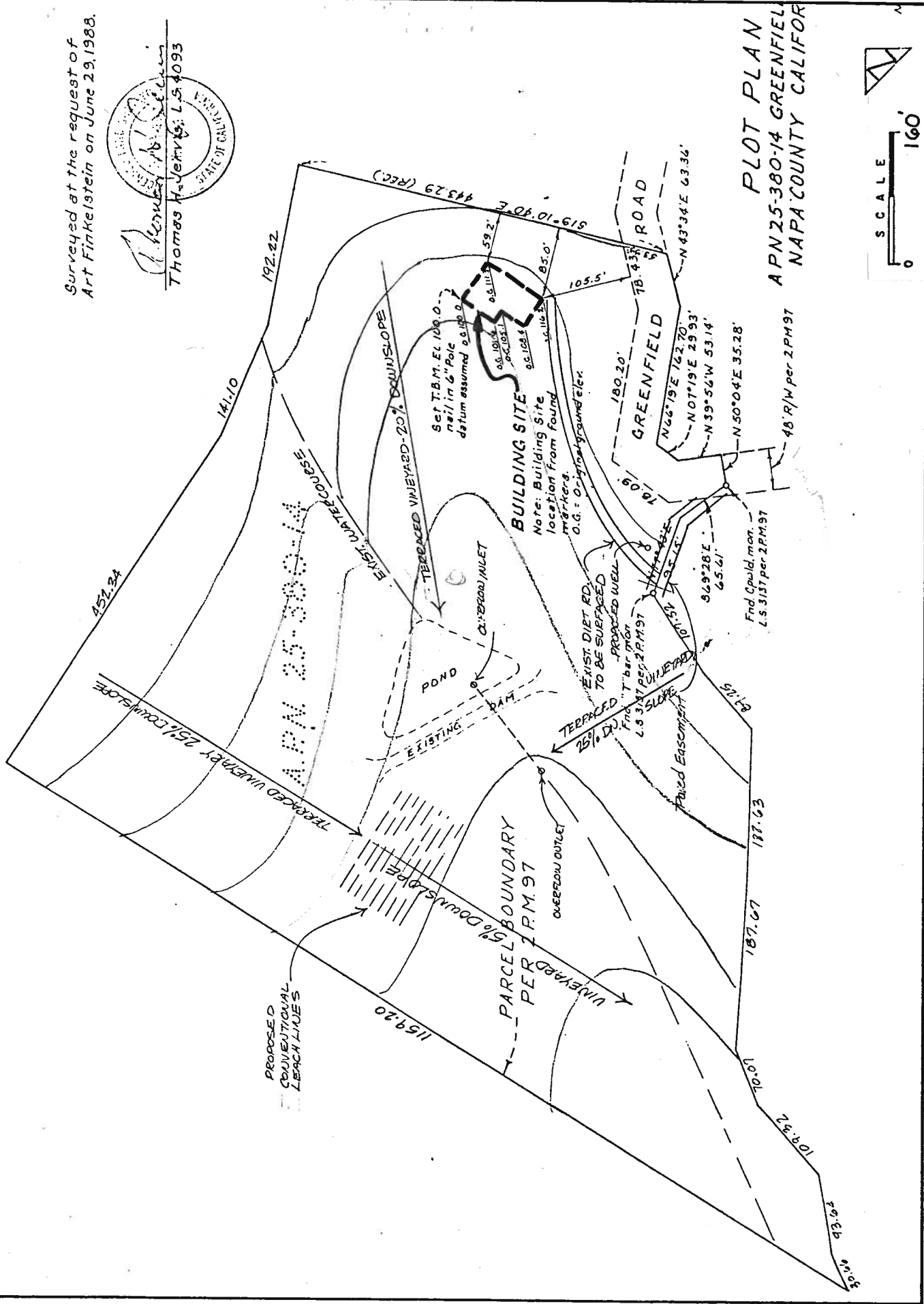
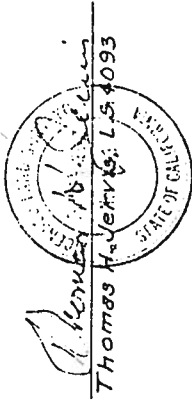


# FINKELSTEIN VINEYARDS

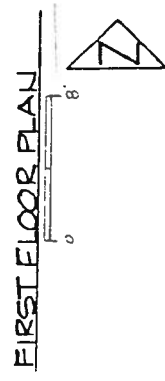
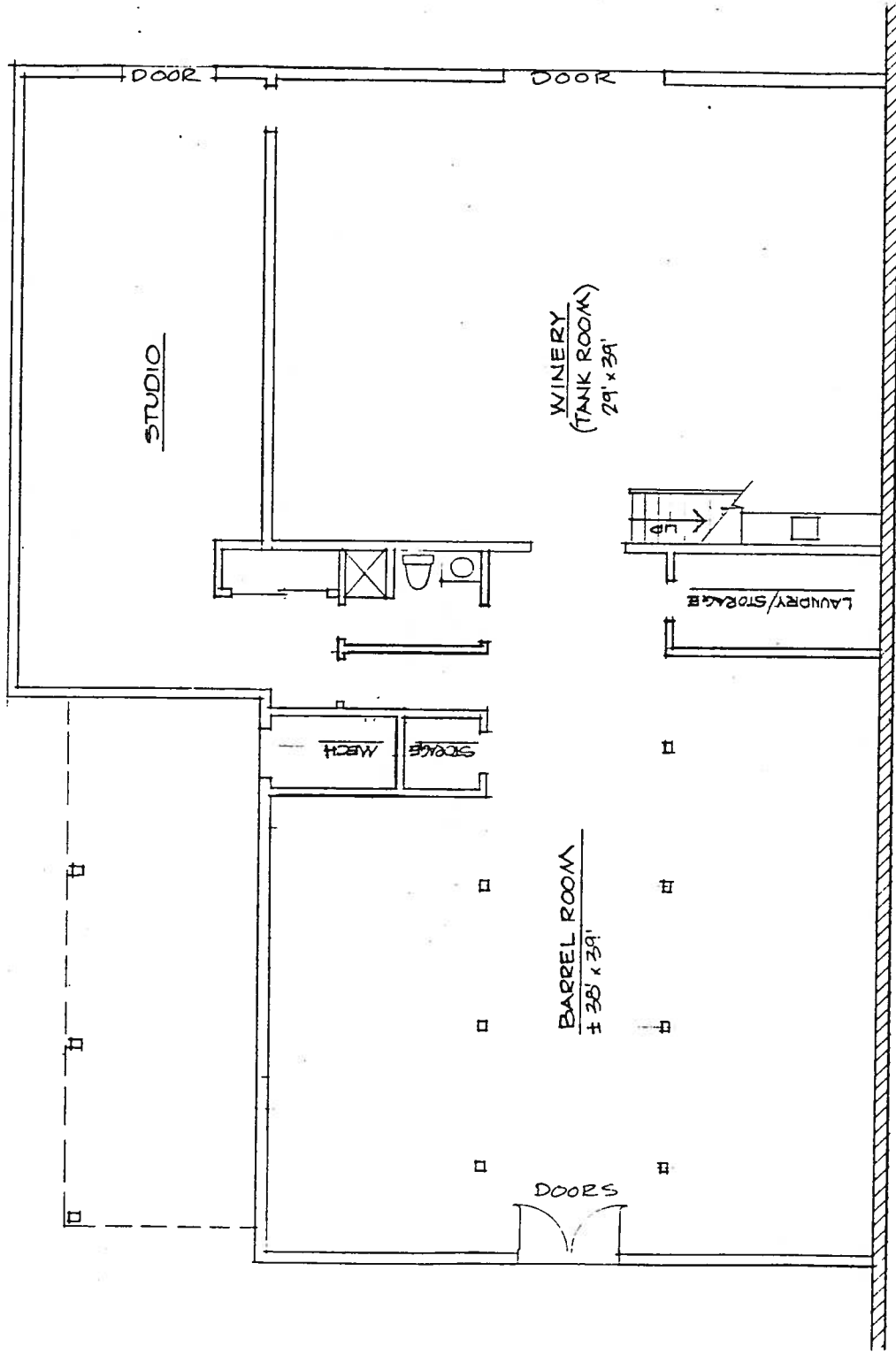
Surveyed at the request of  
Art Finkelstein on June 29, 1988.



**PLOT PLAN**  
APN 25-380-14 GREENFIELD  
NAPA COUNTY CALIFOR

7-19-88  
UP

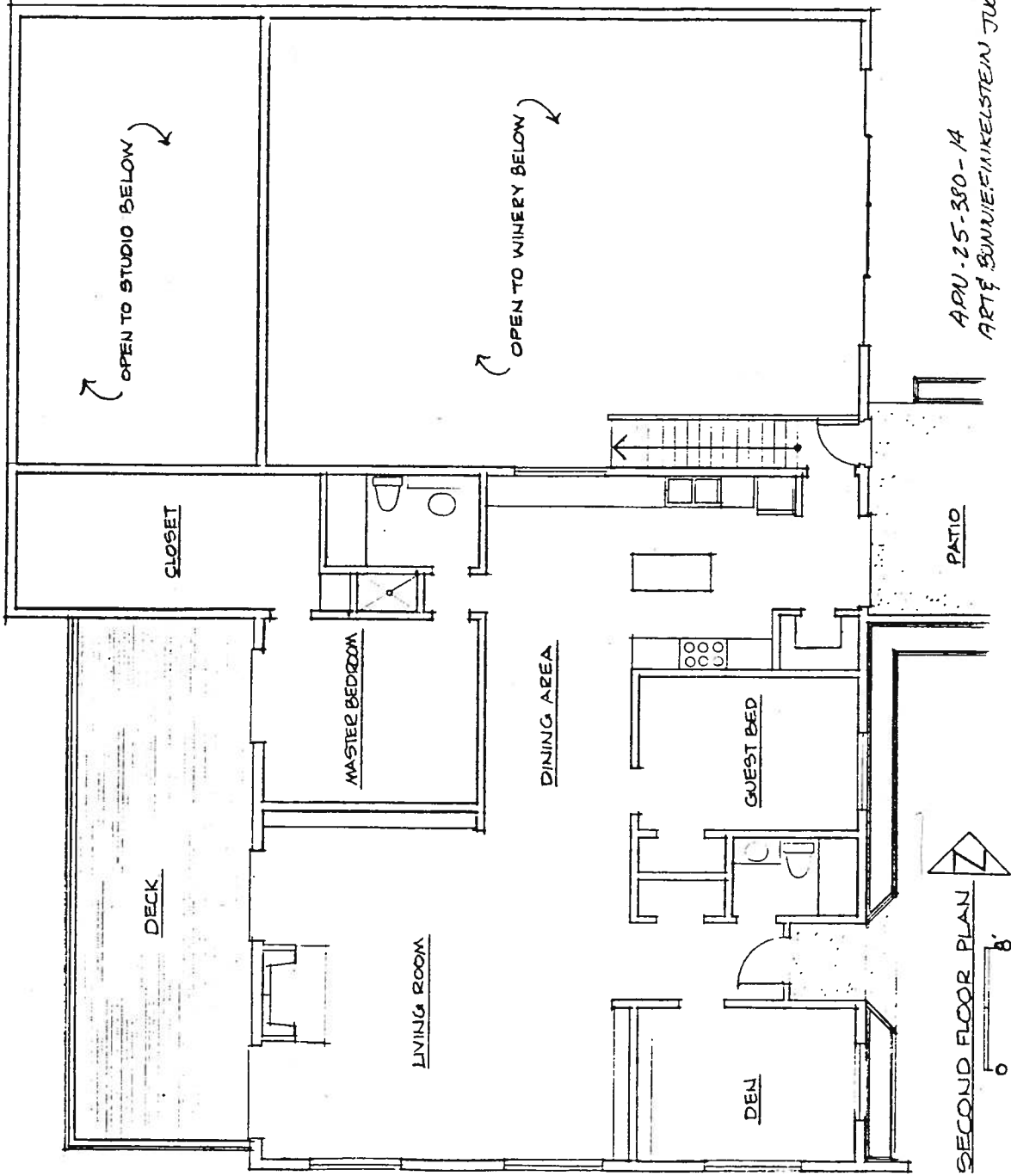
FINKELSTEIN VINEYARDS



FIRST FLOOR PLAN

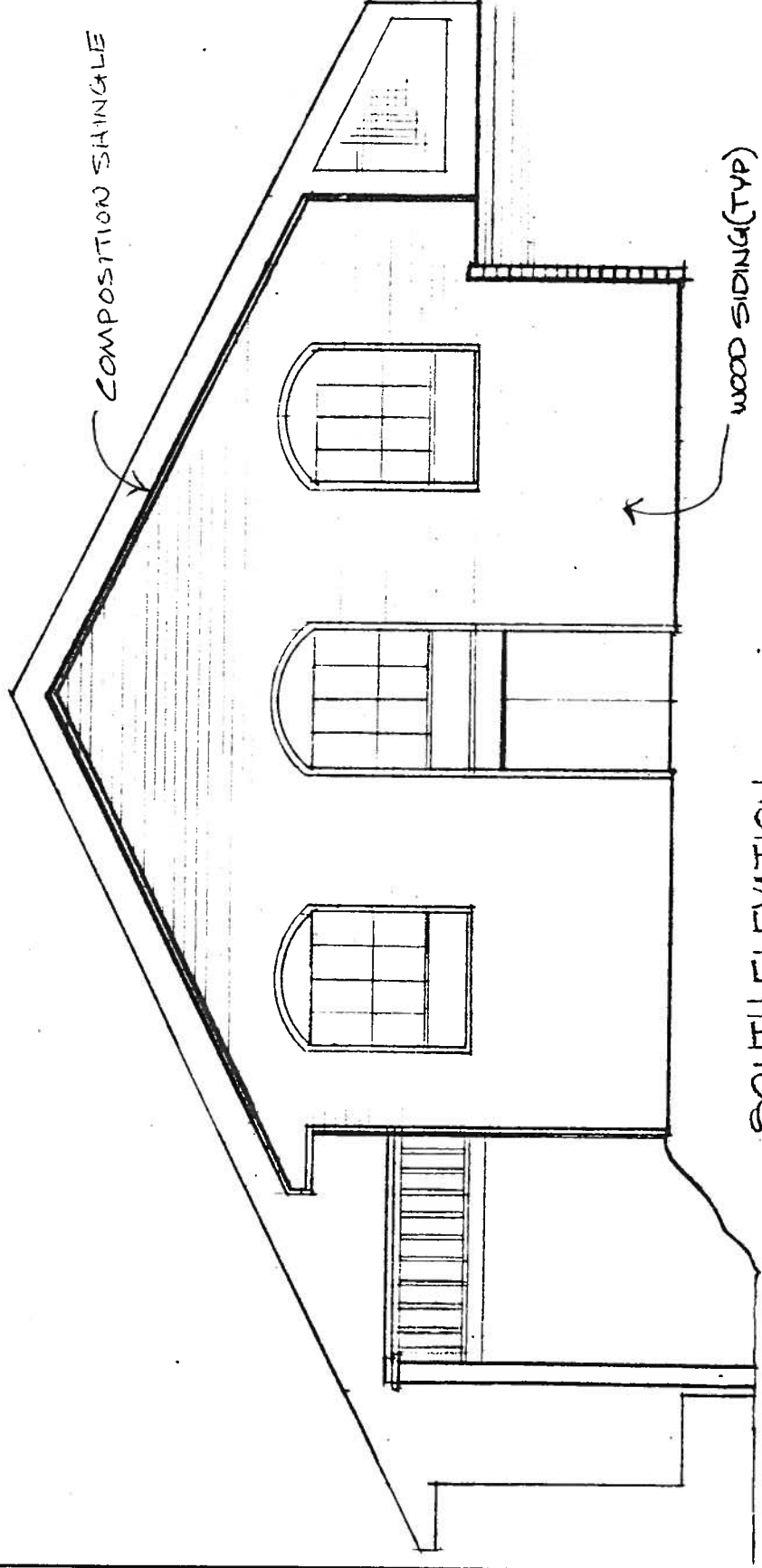
ART & BONNIE FINKELSTEIN  
ADU 25-380-14 JULY 18, 1988

FINKELSTEIN VINEYARDS



7-19-88  
UP

FINKELSTEIN VINEYARDS

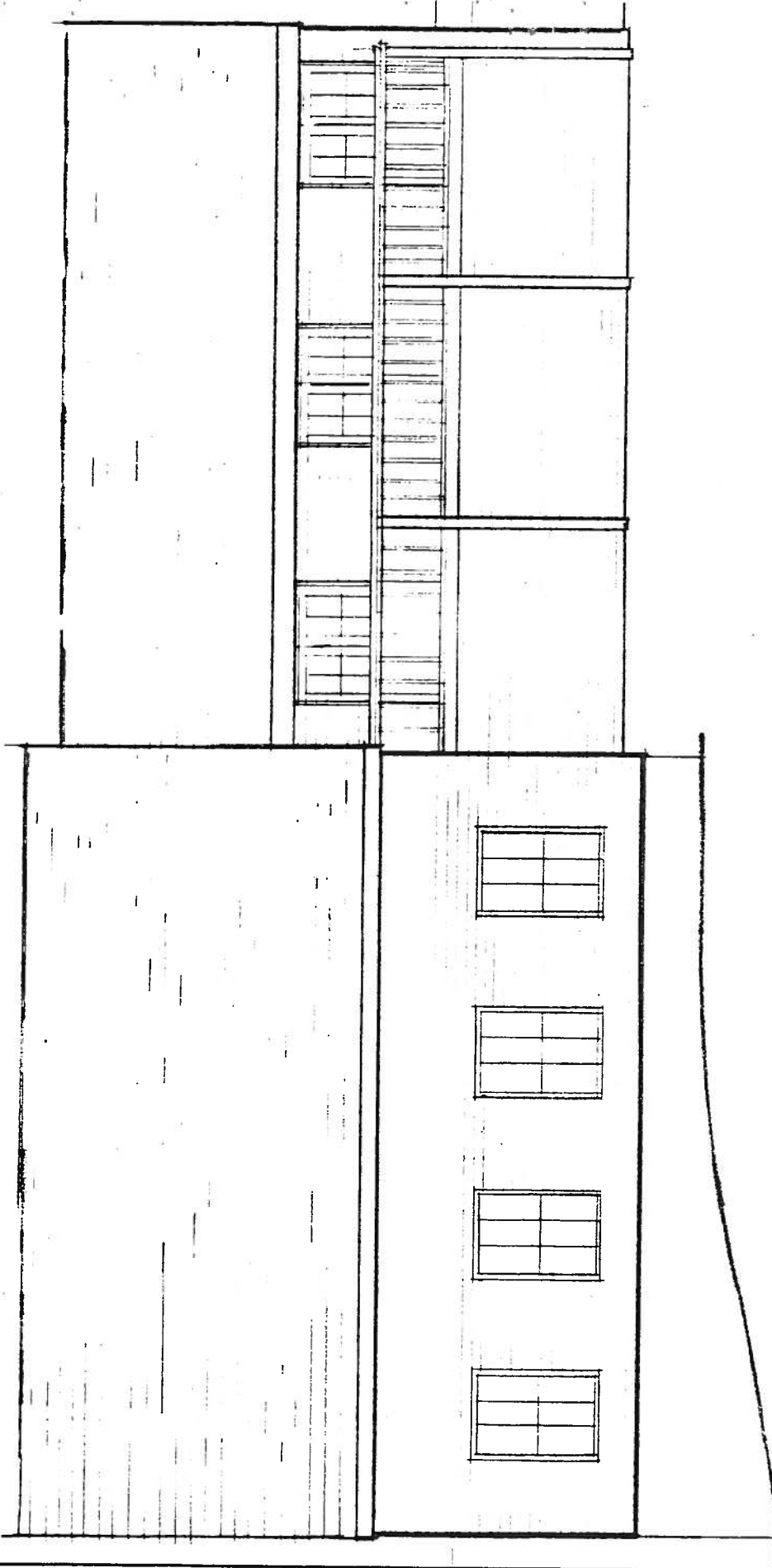


SOUTH ELEVATION



7-19-88  
UP

FINKELSTEIN VINEYARDS

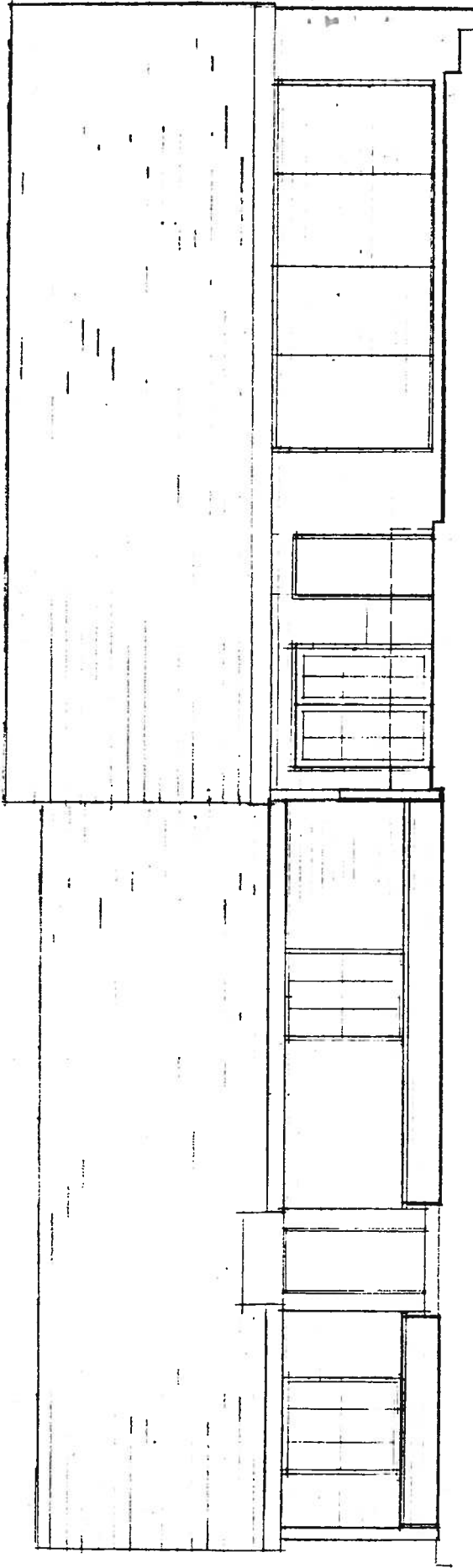


WEST ELEVATION



7-19-88  
UP

FINKELSTEIN VINEYARDS

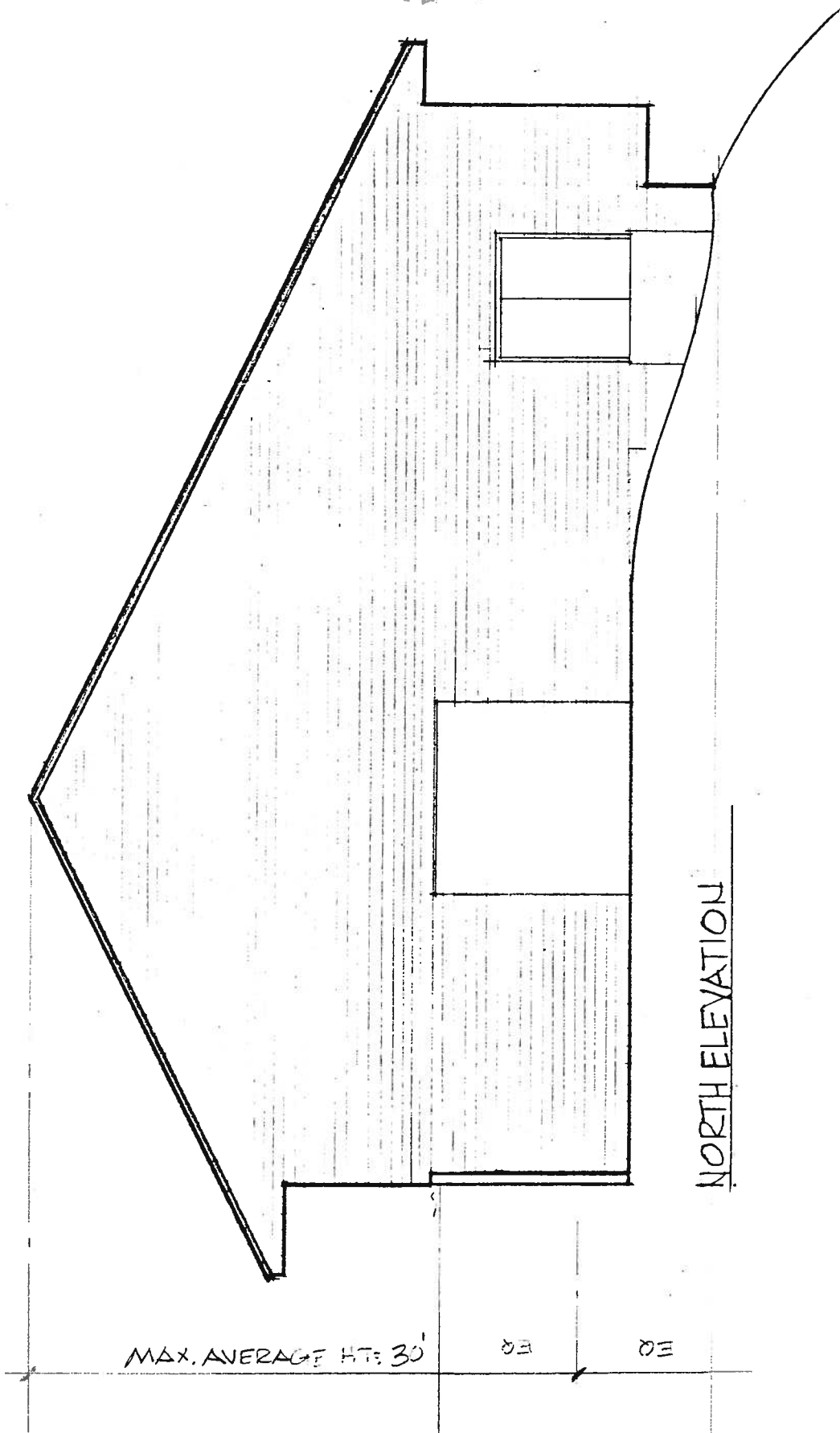


EAST ELEVATION



7-19-88  
UP

FINKELSTEIN VINEYARDS



NORTH ELEVATION

MAX. AVERAGE HT: 30'

EQ

EQ



7-19-88  
UP