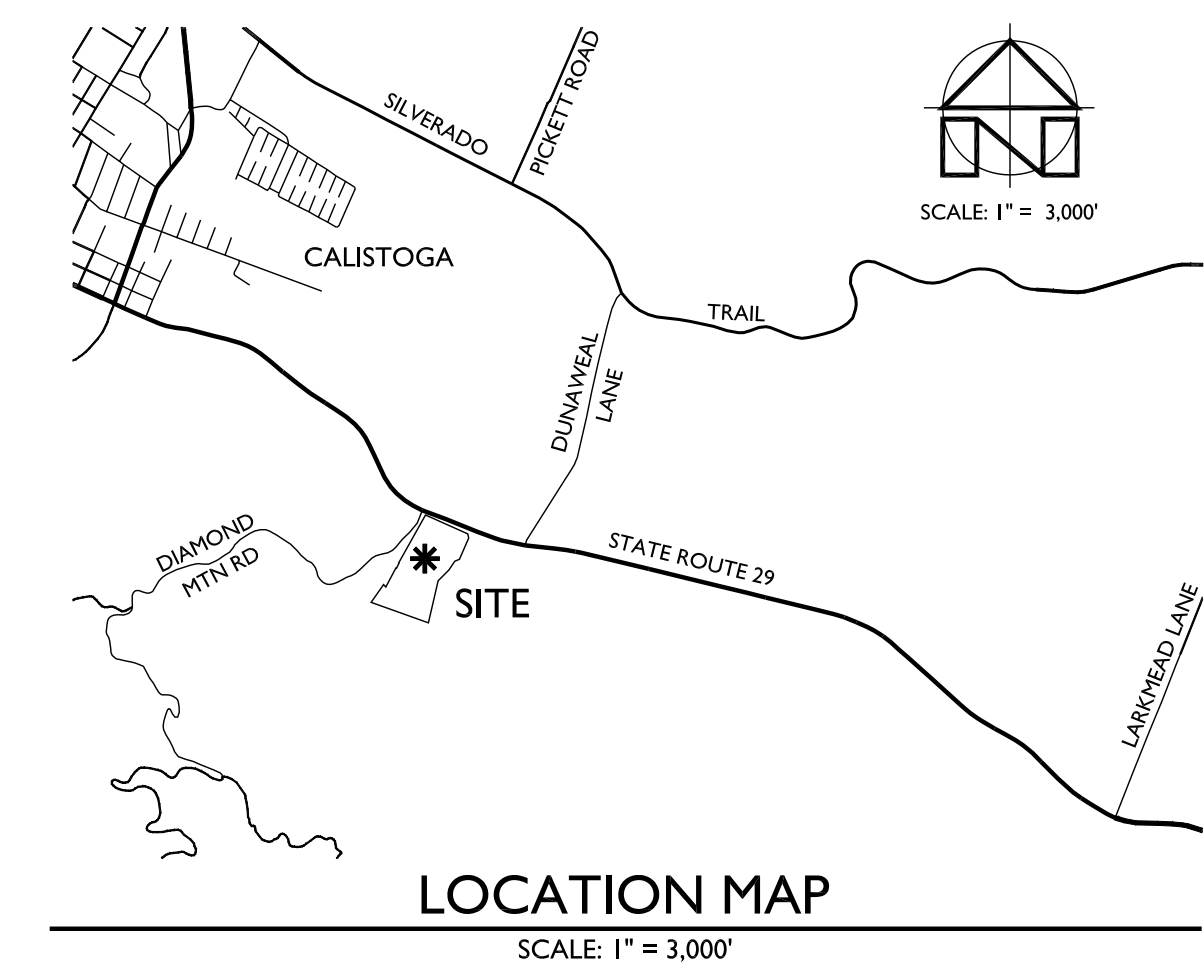
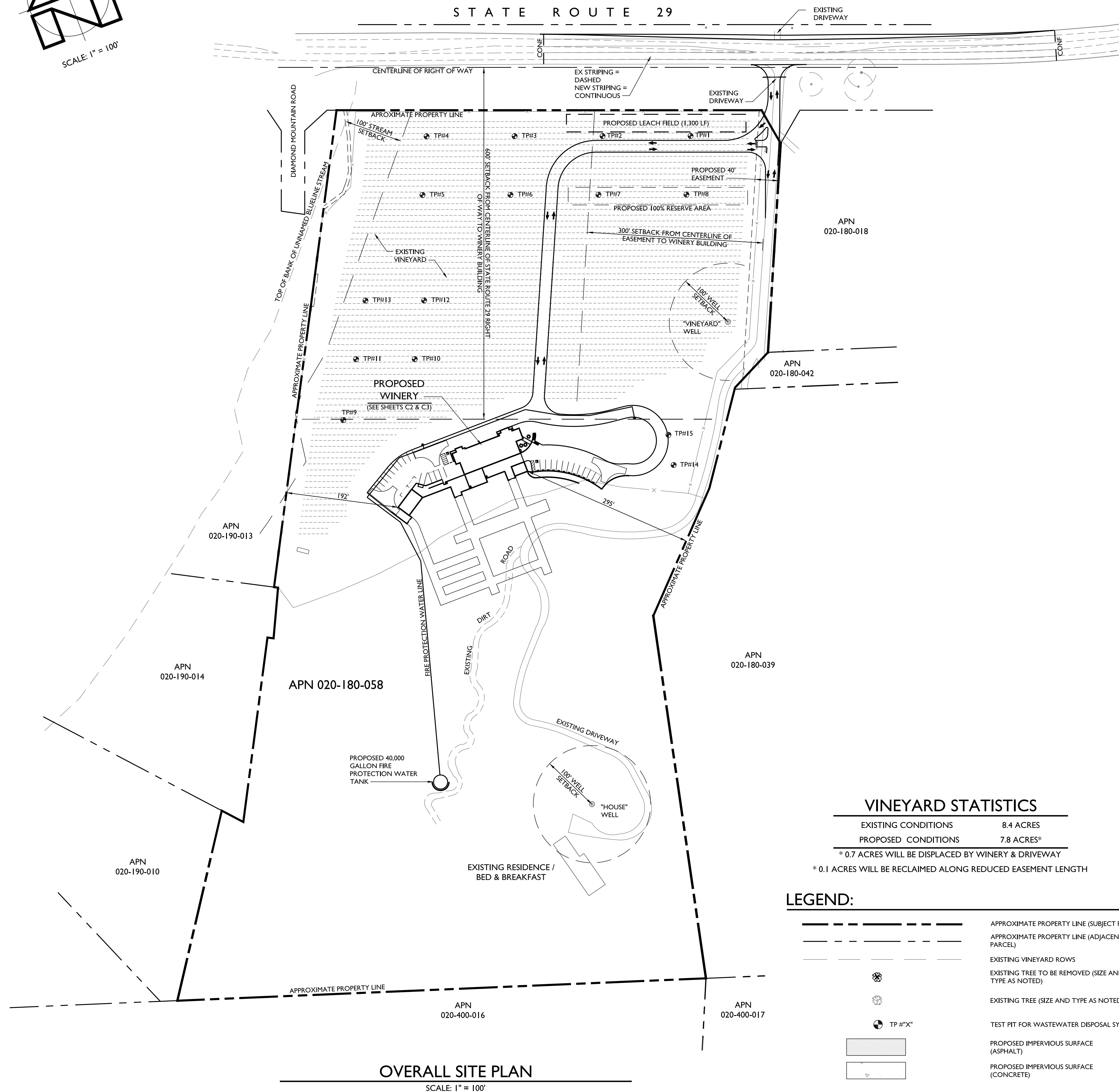
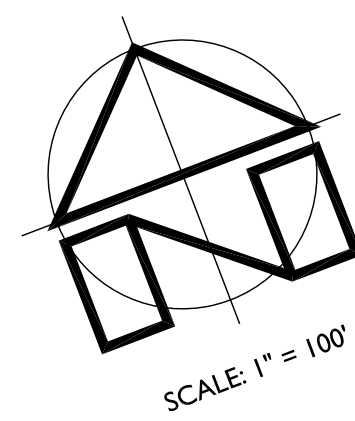


# JOSEPH CELLARS WINERY

## USE PERMIT CONCEPTUAL SITE PLAN



### PROJECT INFORMATION

**PROPERTY OWNER & APPLICANT:**  
J CELLARS INVESTMENTS, LLC  
c/o JOSEPH BARTHOLOMEW  
4455 ST. HELENA HIGHWAY  
CALISTOGA, CA 94515  
(707) 812-3441

**SITE ADDRESS:**  
4455 ST. HELENA HIGHWAY  
CALISTOGA, CA 94515

**ASSESSOR'S PARCEL NUMBER:**  
020-180-058

**PARCEL SIZE:**  
25.96 ± ACRES

**PROJECT SIZE:**  
4± ACRES

**ZONING:**  
AGRICULTURAL WATERSHED (AW)

**DOMESTIC WATER SOURCE:**  
PRIVATE ONSITE WELL

**FIRE PROTECTION WATER SOURCE:**  
PRIVATE ONSITE STORAGE TANK

**WASTEWATER DISPOSAL:**  
PRIVATE ONSITE TREATMENT AND DISPOSAL

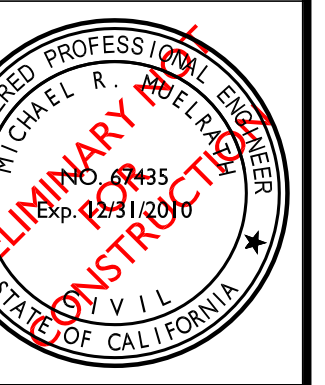
### SHEET INDEX:

C1 OVERALL SITE PLAN  
C2 SLOPE SECTIONS & DEMOLITION PLAN  
C3 CONCEPTUAL SITE PLAN

### NOTES:

- FADED BACKGROUND REPRESENTS EXISTING TOPOGRAPHIC FEATURES. THE TOPOGRAPHIC INFORMATION SHOWN HEREON WAS TAKEN FROM THE "BOUNDARY AND TOPOGRAPHIC SURVEY OF A PORTION OF 4455 SAINT HELENA HIGHWAY" PREPARED BY HORIZON LAND SURVEYS, INC. DATED NOVEMBER 2008.
- CONTOUR INTERVAL = ONE FOOT, HIGHLIGHTED EVERY FIVE FEET. DASHED CONTOURS ARE TAKEN FROM THE NAPA COUNTY GIS WEBSITE AND ARE SHOWN AT FIVE FOOT INTERVALS. SEE SHEET C2 AND C3 FOR CONTOUR INFORMATION.
- THE PROPERTY LINES SHOWN HEREON DO NOT REPRESENT A BOUNDARY SURVEY. THE PROPERTY LINES ARE APPROXIMATE AND ARE INTENDED FOR INFORMATIONAL PURPOSES ONLY.
- TEST PITS #1 THROUGH #15 WERE EXCAVATED BY MCCOLLUM GENERAL ENGINEERING ON DECEMBER 5, 2008 AND WERE WITNESSED BY APPLIED CIVIL ENGINEERING INCORPORATED AND NAPA COUNTY ENVIRONMENTAL MANAGEMENT DEPARTMENT.

**APPLIED CIVIL ENGINEERING INCORPORATED**  
2074 West Lincoln Avenue  
Napa, CA 94558  
(707) 320-4968 (707) 320-2395 Fax  
www.appliedcivil.com



DESIGNED BY:

MRM

DRAWN BY:

MRM

CHECKED BY:

MRM

JOSEPH CELLARS WINERY

USE PERMIT CONCEPTUAL SITE PLAN  
OVERALL SITE PLAN

J CELLARS INVESTMENTS, LLC  
c/o JOSEPH BARTHOLOMEW  
4455 ST. HELENA HIGHWAY  
CALISTOGA, CA 94515  
NAPA COUNTY APN 020-180-058

DATE:

MARCH 24, 2010

JOB NUMBER:

08-158

FILE:

08-158CONC.DWG

ORIGINAL SIZE:

24" X 36"

SCALE:

AS NOTED

SHEET NUMBER:

C1

OF

3