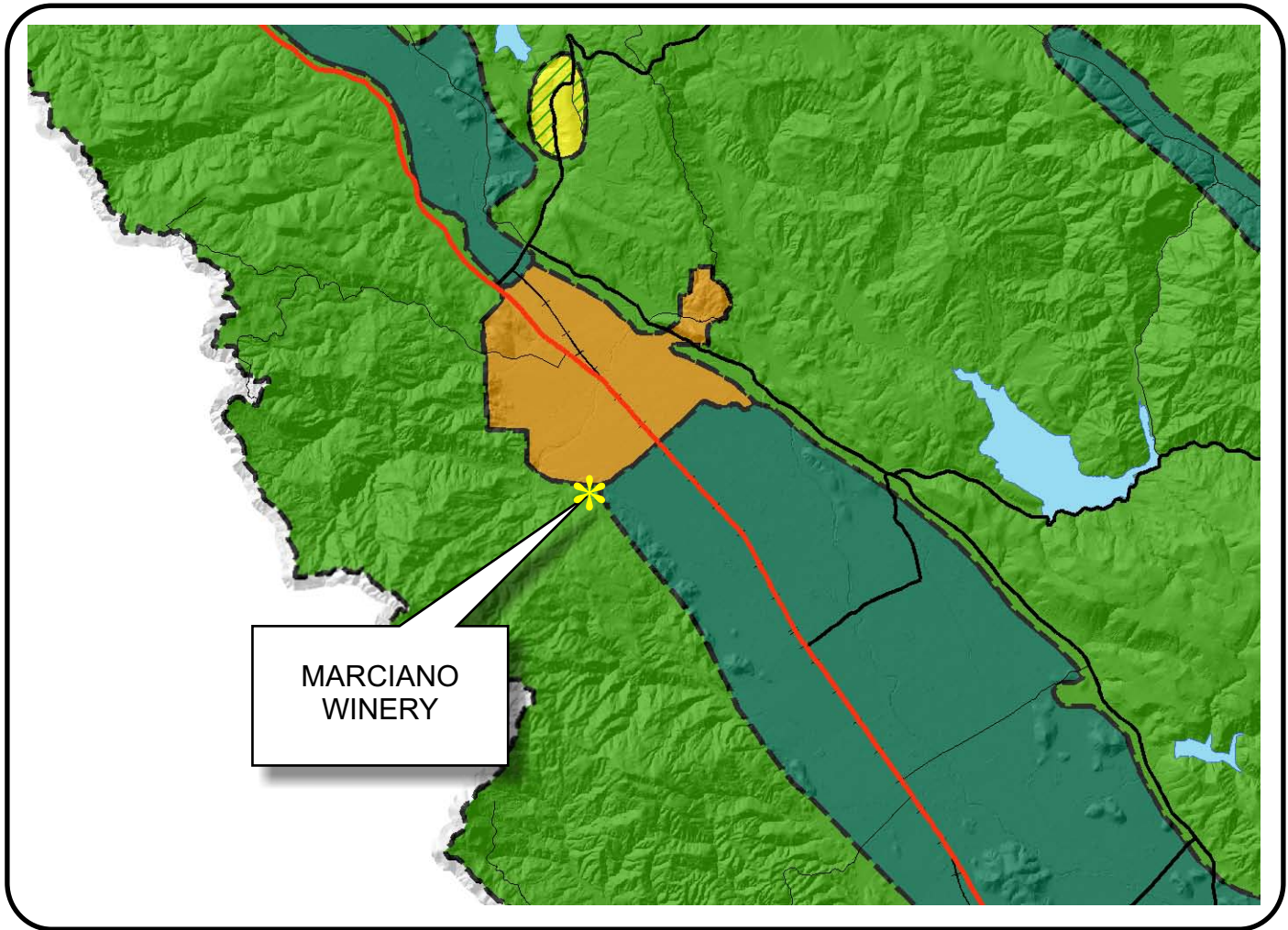








# NAPA COUNTY LAND USE PLAN 2008 - 2030





## LEGEND


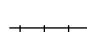




### URBANIZED OR NON-AGRICULTURAL

-  Cities
-  Urban Residential \*
-  Rural Residential \*
-  Industrial
-  Public-Institutional
-  Study Area

### OPEN SPACE

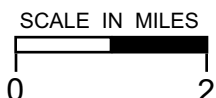
-  Agriculture, Watershed & Open Space
-  Agricultural Resource

### TRANSPORTATION

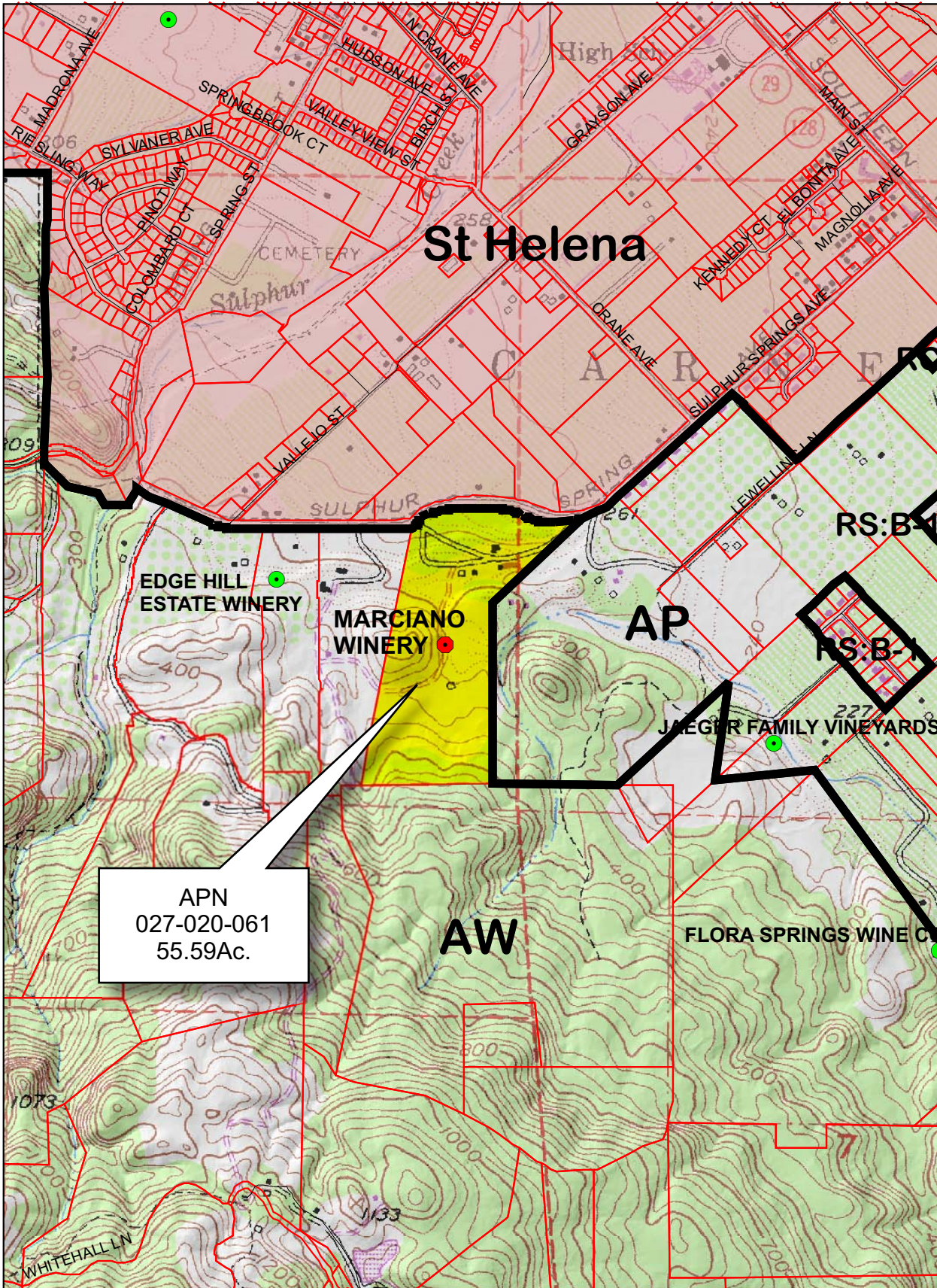
-  Mineral Resource
-  Railroad
-  Limited Access Highway
-  Major Road
-  Secondary Road
-  Airport
-  Airport Clear Zone
-  Landfill - General Plan

\* See Action Item AG/LU-114.1 regarding agriculturally zoned areas within these land use designations

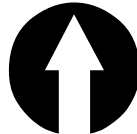
APN  
027-020-061  
11-09-2009  
8B UP



# MARCIANO WINERY

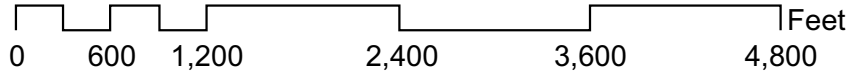


APN  
027-020-061  
55.59Ac.

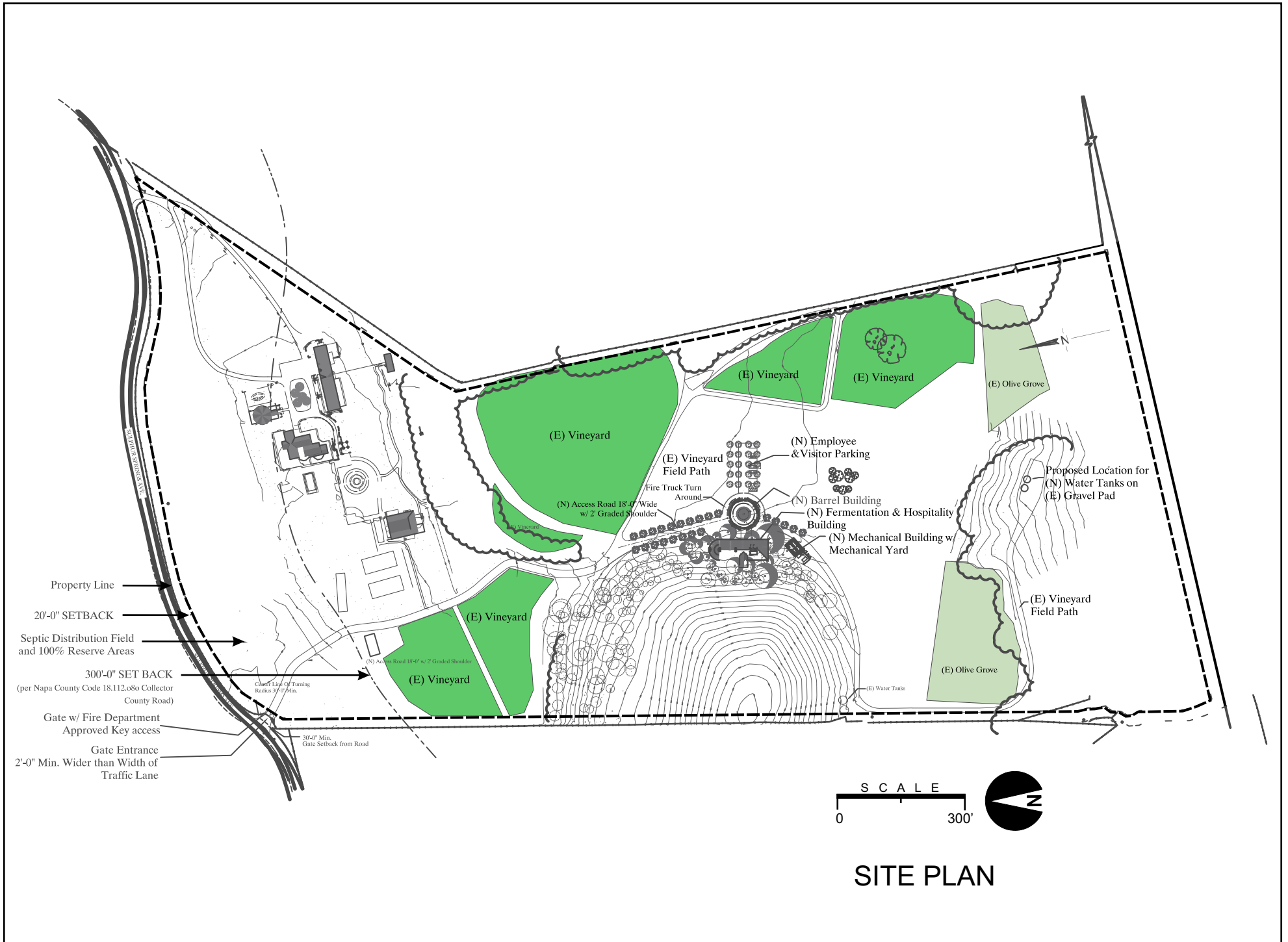


## Legend

- Wineries in Vicinity**
- Producing
  - Approved
  - Pending
  - Zoning
  - Parcels

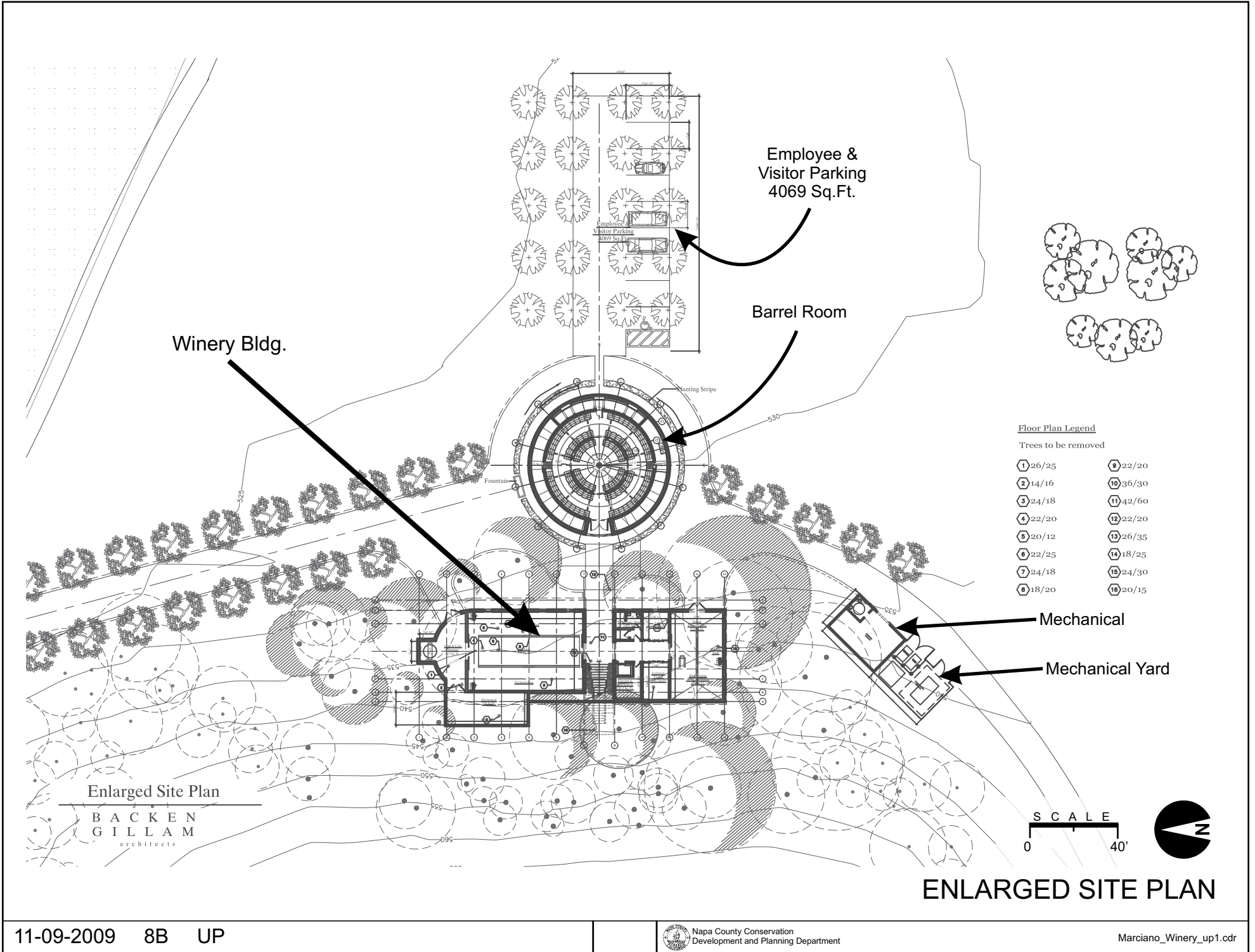


# MARCIANO WINERY

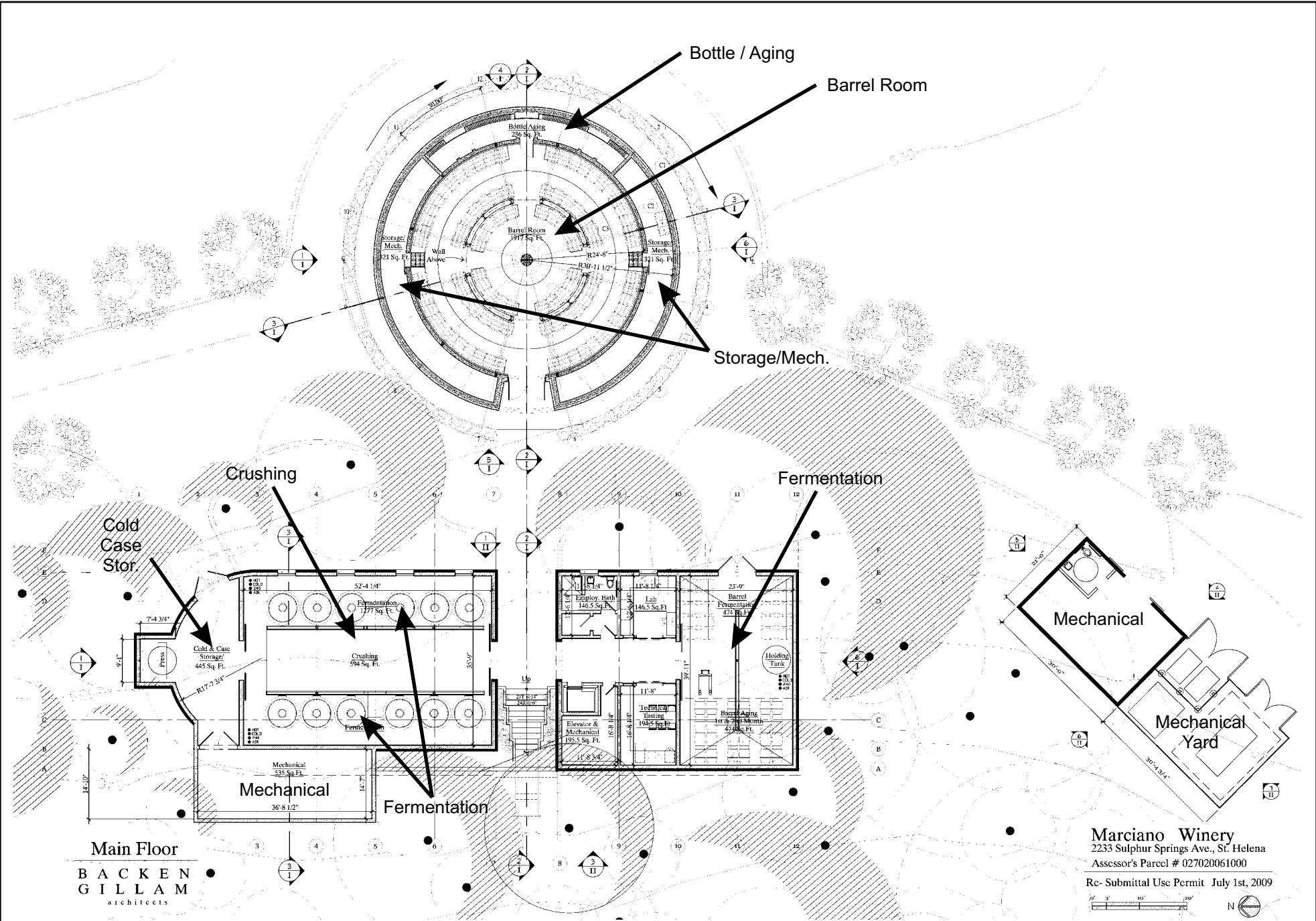


SITE PLAN

# MARCIANO WINERY



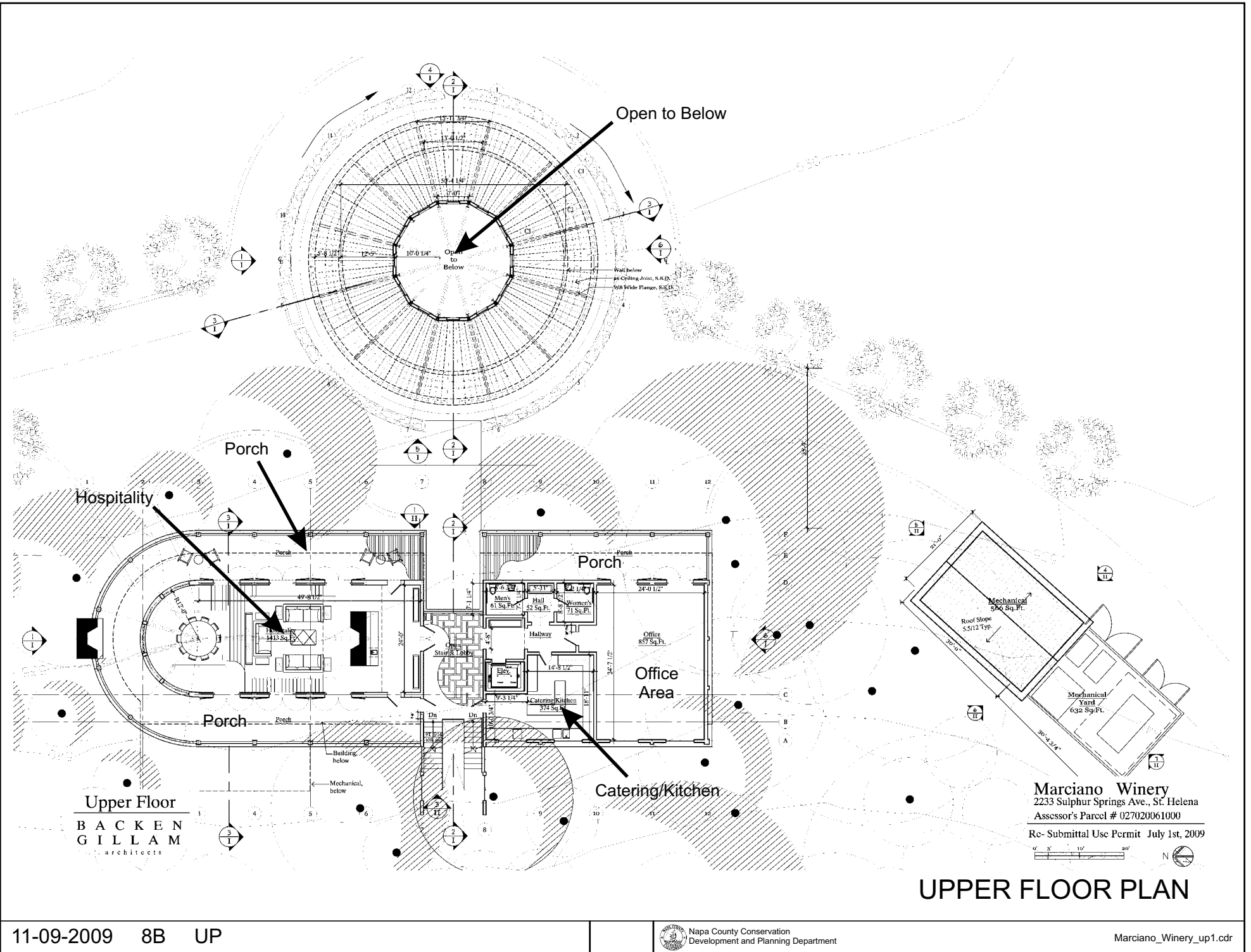
# MARCIANO WINERY



Marciano Winery  
 2233 Sulphur Springs Ave., St. Helena  
 Assessor's Parcel # 027020061000  
 Re-Submittal Use Permit July 1st, 2009

## MAIN FLOOR PLAN

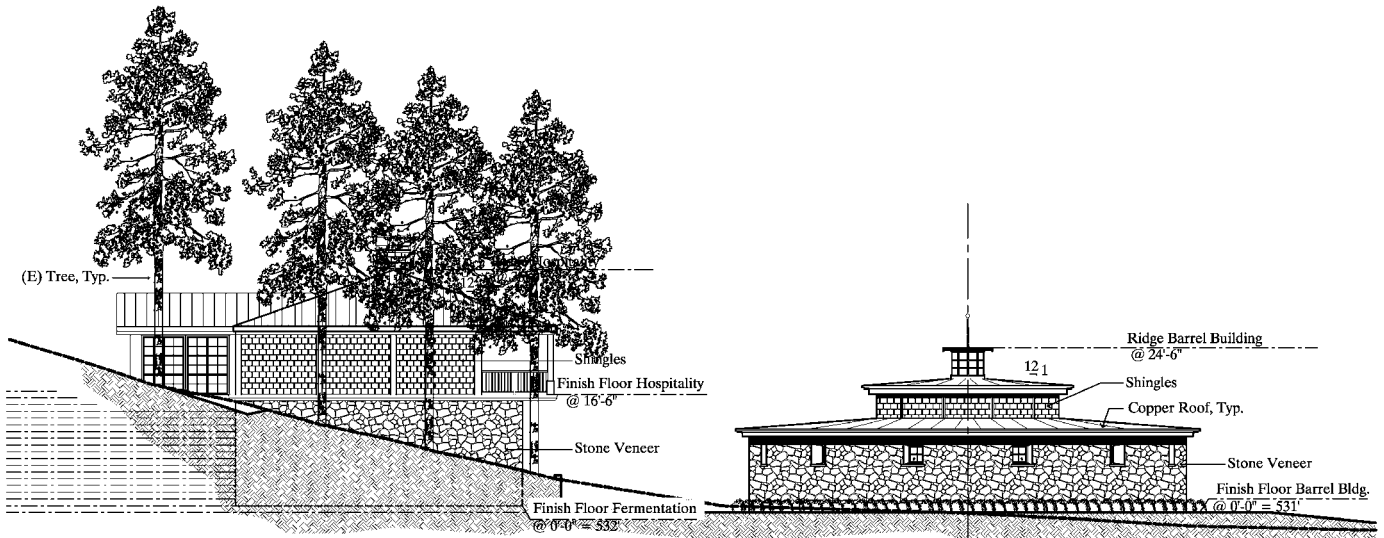
# MARCIANO WINERY



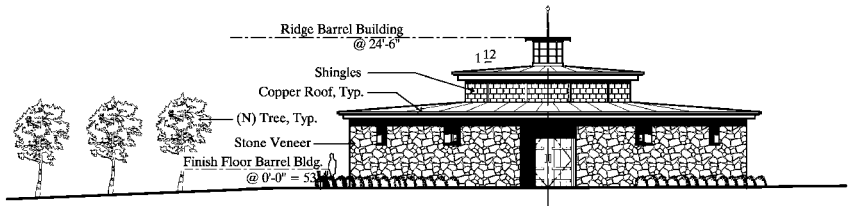
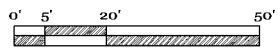
Marciano Winery  
 2233 Sulphur Springs Ave., St. Helena  
 Assessor's Parcel # 027020061000  
 Re-Submittal Use Permit July 1st, 2009

## UPPER FLOOR PLAN

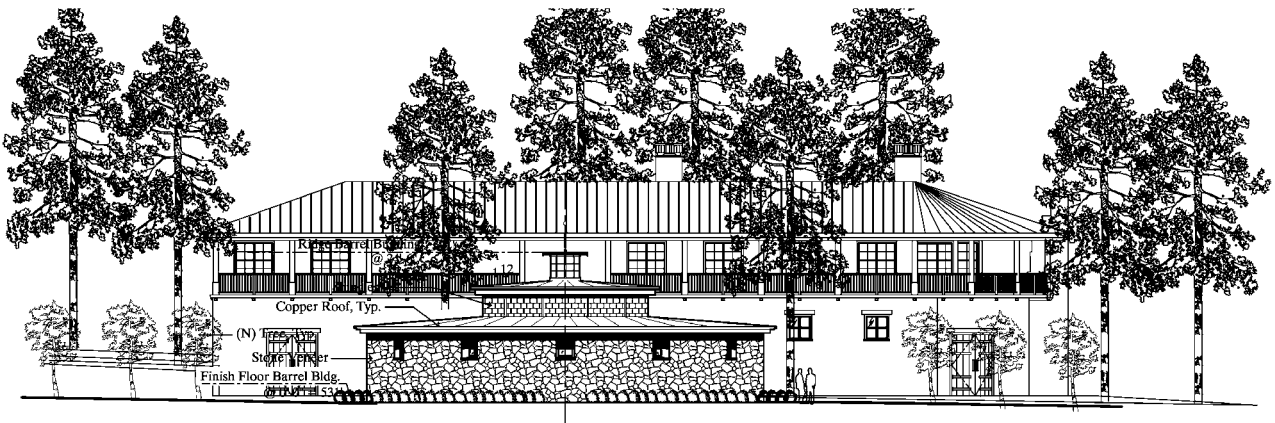
# MARCIANO WINERY



6 BARREL & FERMENTATION BLDG.  
SOUTH ELEVATION



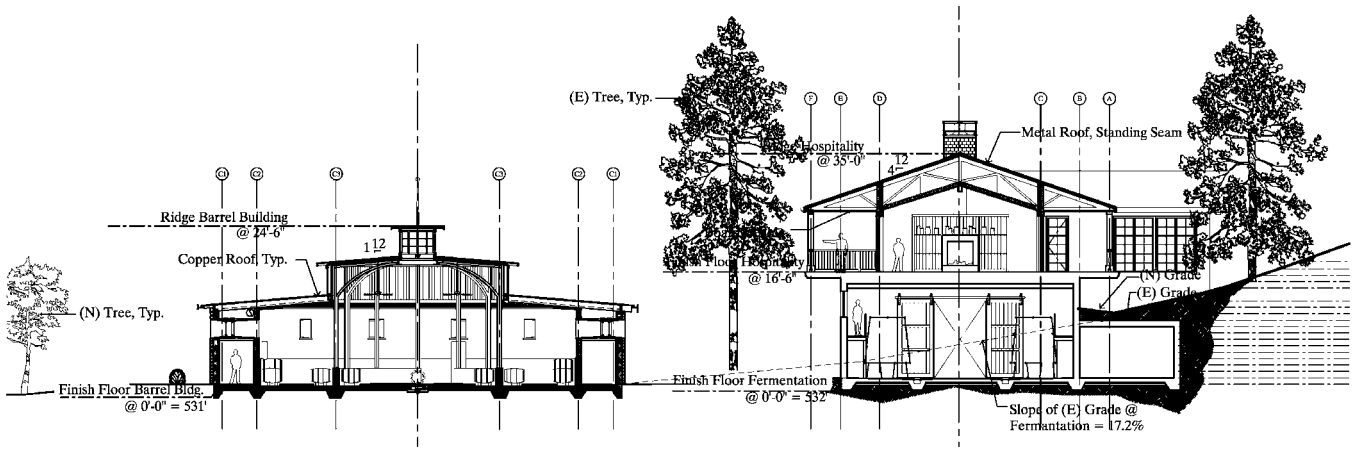
5 BARREL BLDG. - WEST ELEVATION



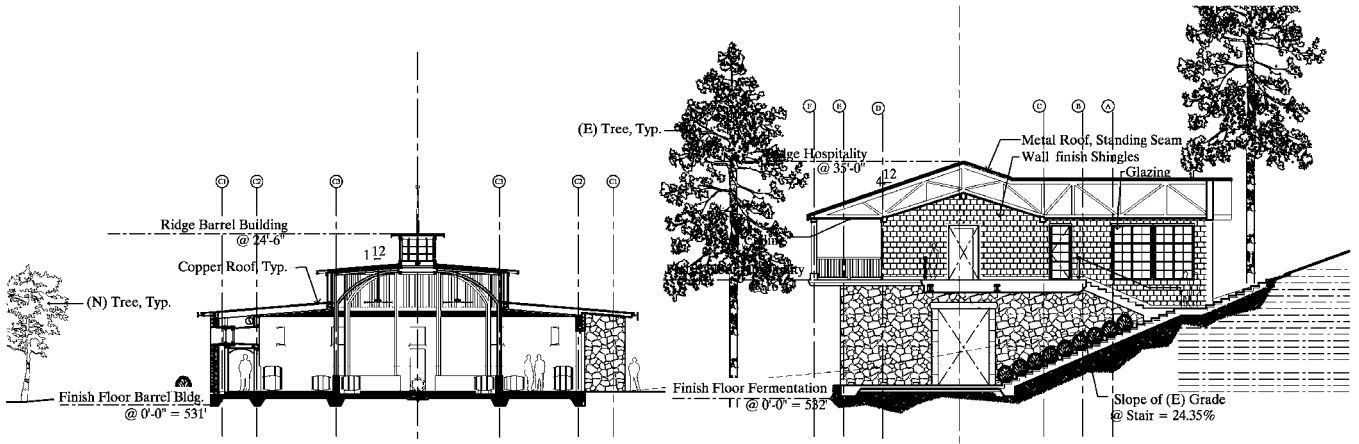
4 BARREL BLDG. - EAST ELEVATION

## Elevations & Sections I

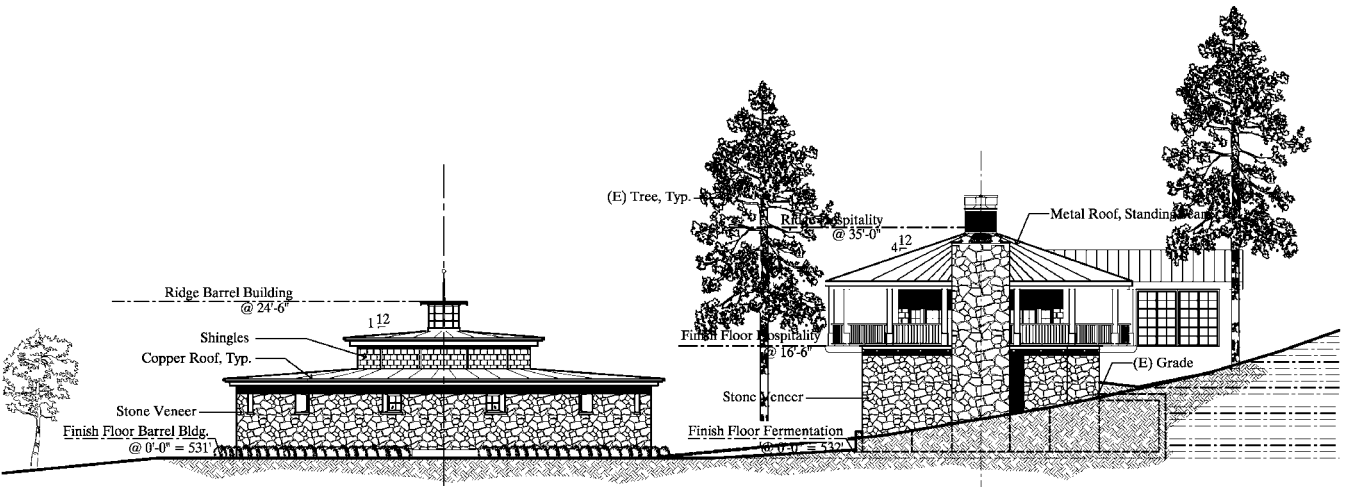
# MARCIANO WINERY



3 BARREL & FERMENTATION BLDG.  
SECTION AT FERMENTATION



2 BARREL & FERMENTATION BLDG.  
SECTION AT STAIR

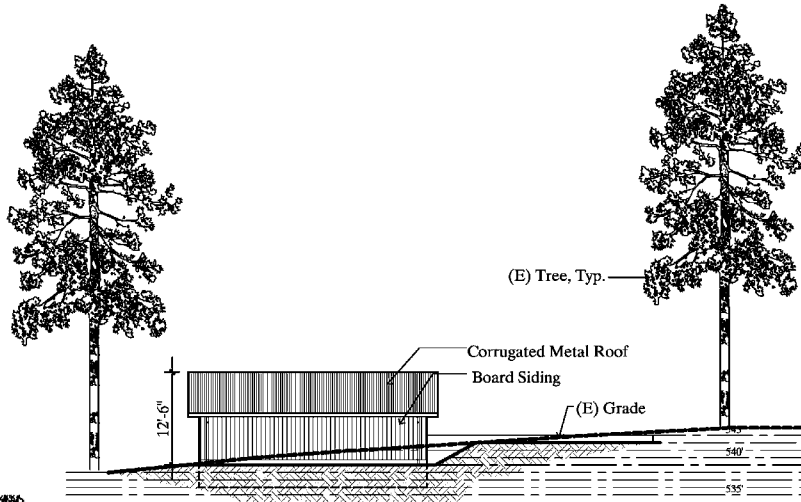


1 BARREL & FERMENTATION BLDG.  
NORTH ELEVATION

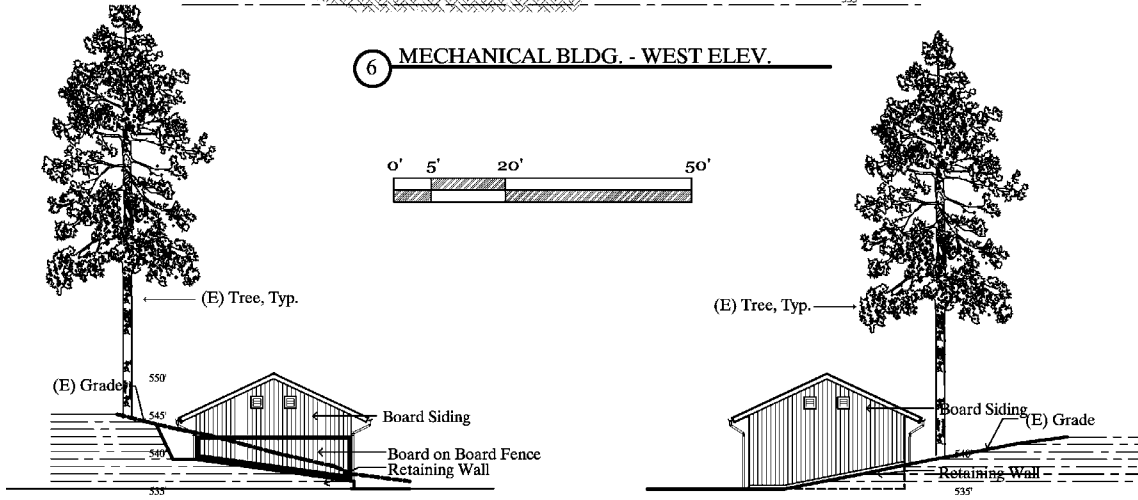
## Elevations & Sections I



# MARCIANO WINERY

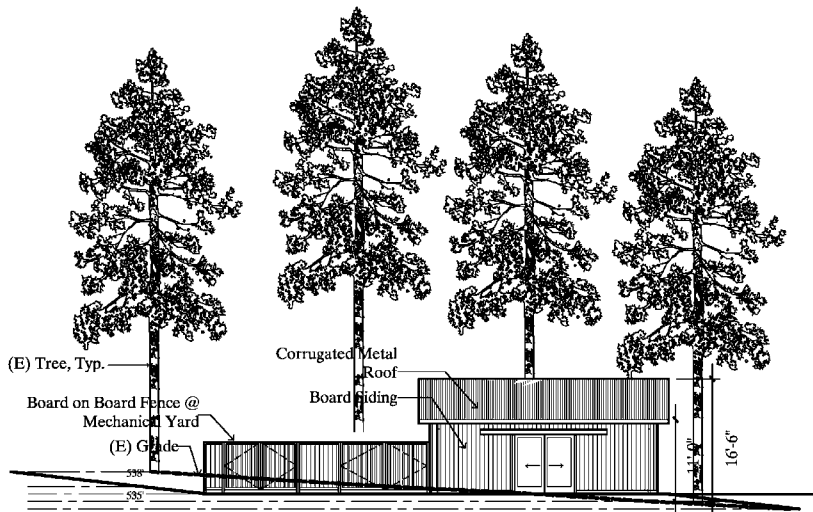


6 MECHANICAL BLDG. - WEST ELEV.



7 MECHANICAL BLDG. - SOUTH ELEV.

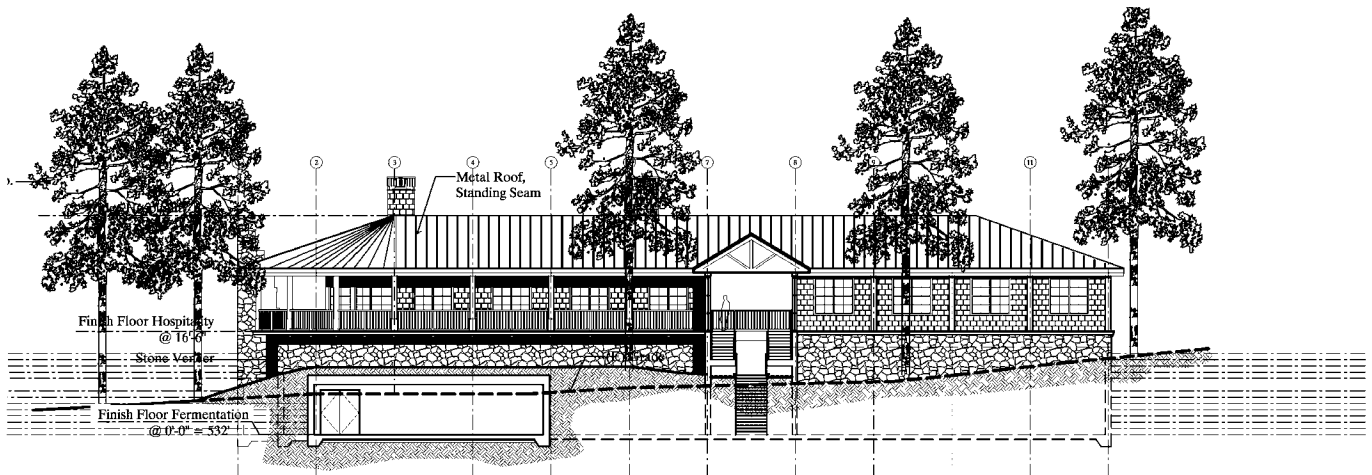
5 MECHANICAL BLDG. - NORTH ELEV.



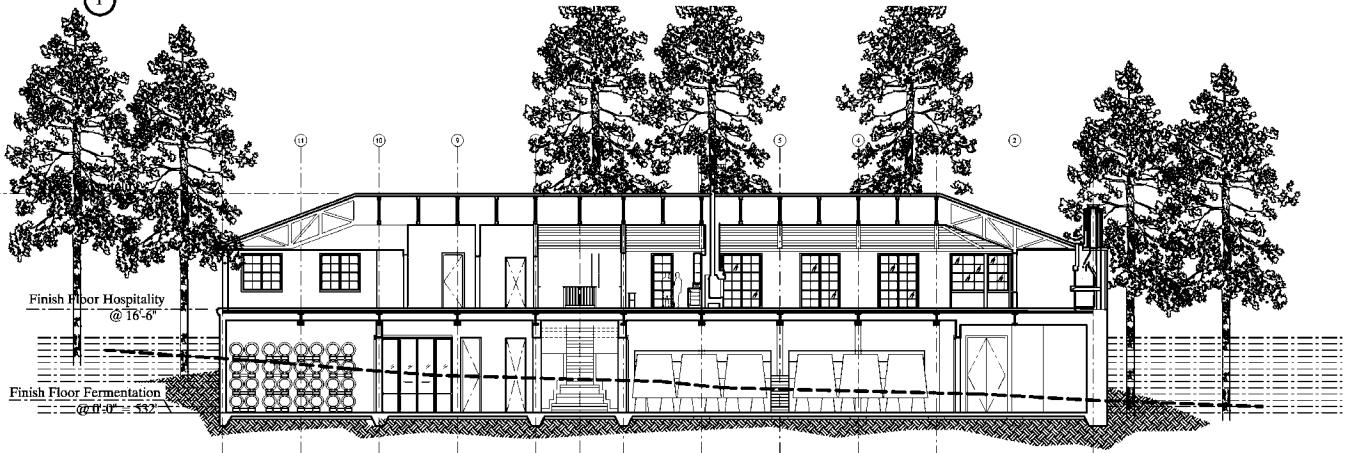
4 MECHANICAL BLDG. - EAST ELEV.

## Elevations & Sections II

# MARCIANO WINERY



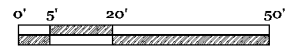
1 FERMENTATION BLDG. - WEST ELEV.



2 FERMENTATION BLDG. - SECTION  
FACING WEST



1 FERMENTATION BLDG. - EAST ELEV.



## Elevations & Sections II

# MARCIANO WINERY



# MARCIANO WINERY

