



1505 Main Street St. Helena, CA 94574
 TEL 707 963 1565 FAX 707 963 4509
 PROJECT ARCHITECT
PAUL W. KELLEY, AIA
 PROJECT DESIGNER
RICK B. BAKER, ASSOC. AIA

These drawings are the property of Lail Design Group, Inc. and have been prepared specifically for this project. These drawings are not to be used for any other project, by any other entity or in another location.
 Copyright 2007 Lail Design Group, Inc.

GREEN ISLAND STORAGE

BOAT & RV STORAGE
 450 GREEN ISLAND ROAD
 AMERICAN CANYON, CA 94503
 APN 057-130-003

PROJECT NUMBER 274
 DATE 03/12/07
 CHECKED BY P. KELLEY
 DRAWN BY R. BAKER

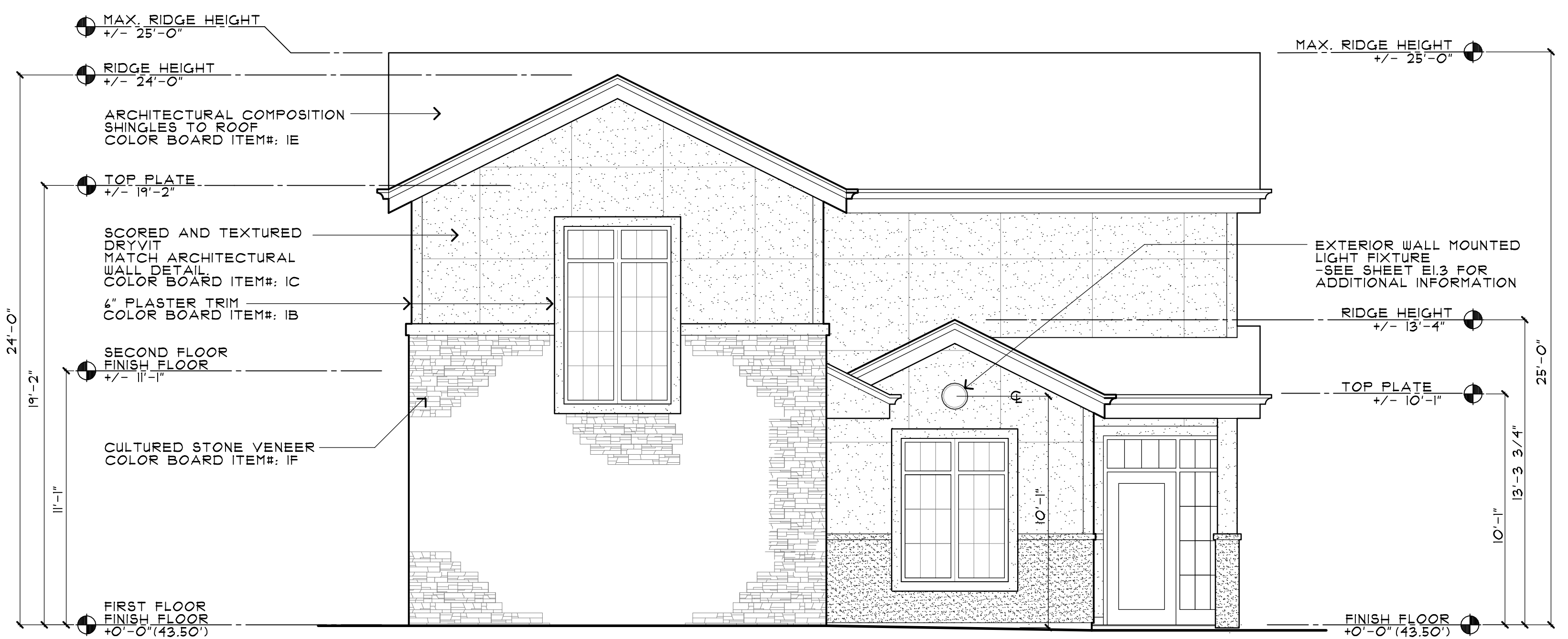
REVISIONS	
1	CITY OF AMERICAN CANYON COMMENTS 09/13/07
2	CITY OF AMERICAN CANYON COMMENTS 11/19/07

EXTERIOR ELEVATIONS

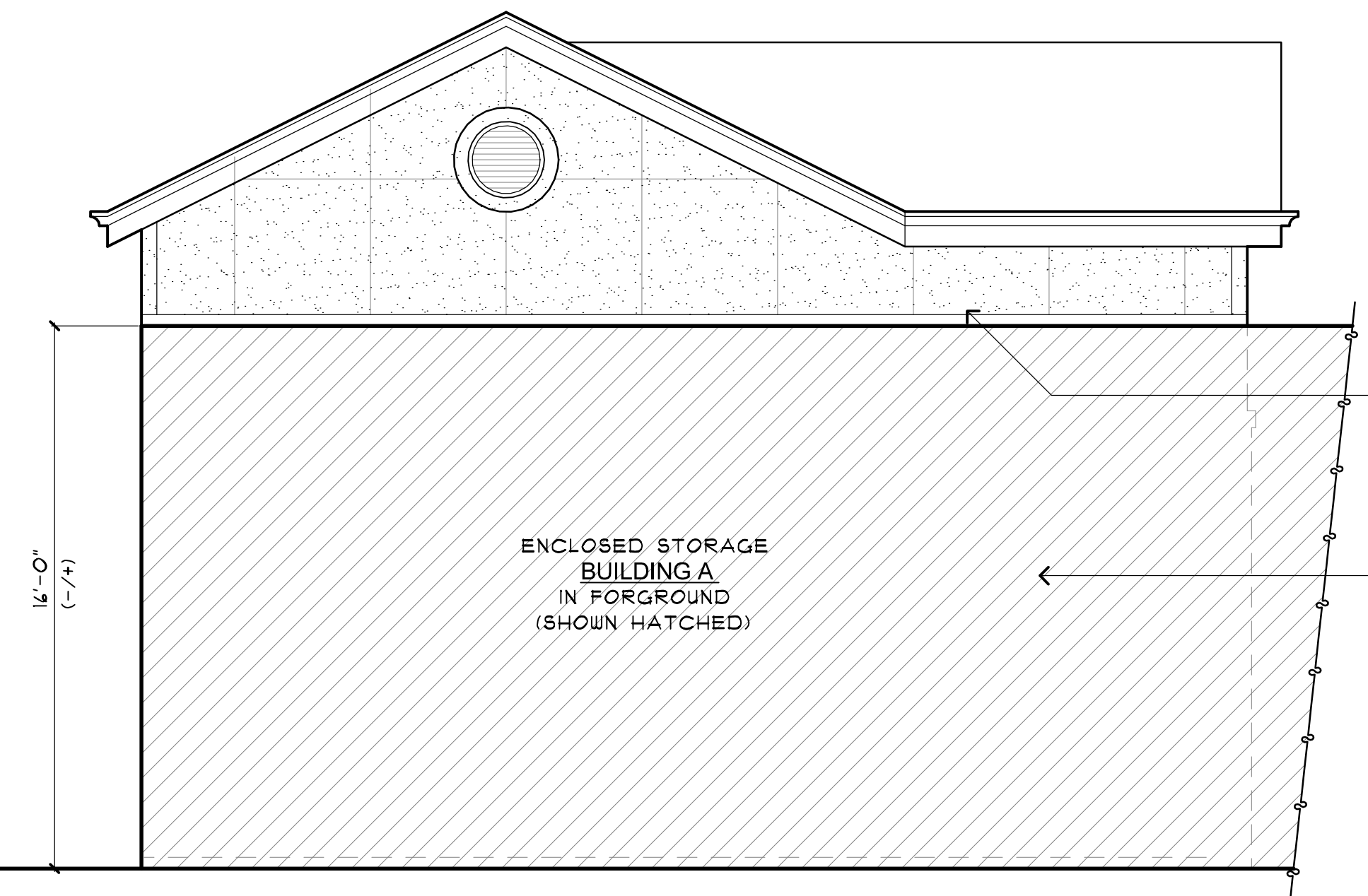
A5.1
 USE PERMIT



3 NORTH ELEVATION
 SCALE: 1/4" = 1'-0"



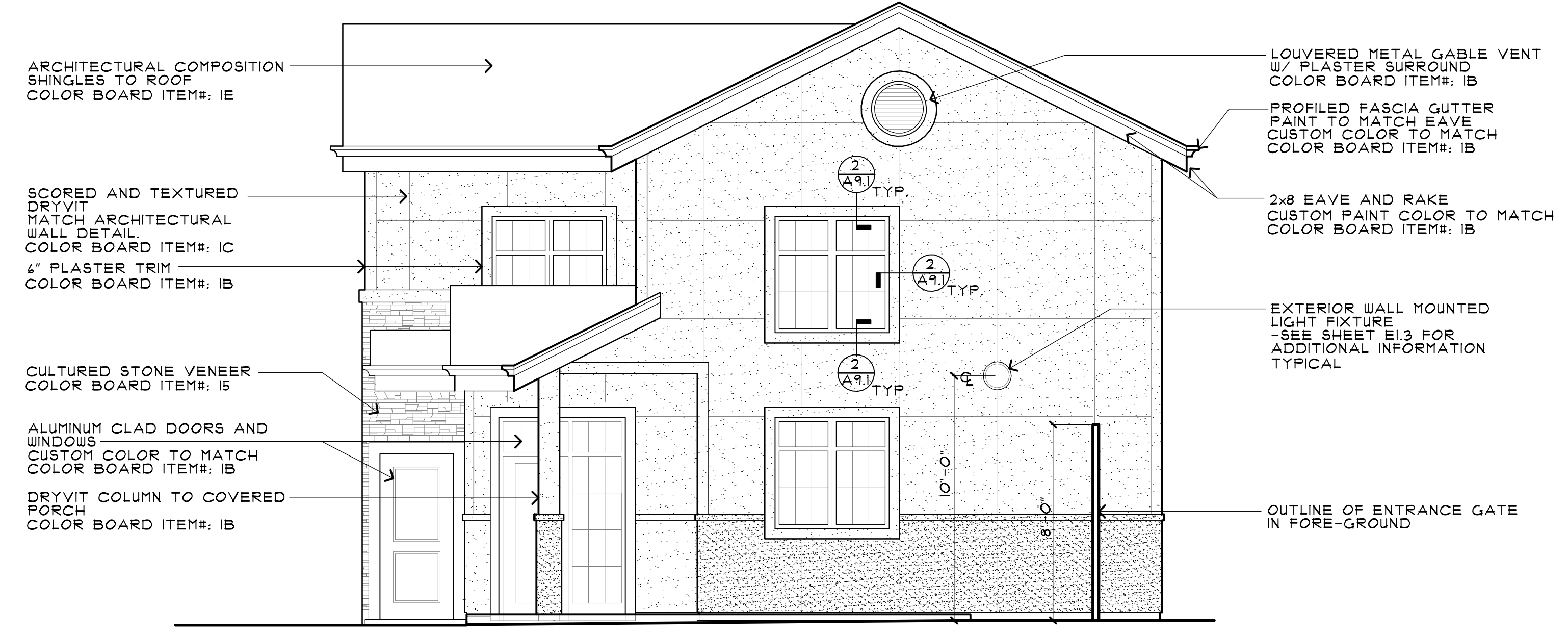
1 SOUTH ELEVATION-GREEN ISLAND ROAD
 SCALE: 1/4" = 1'-0"



4 WEST ELEVATION
 SCALE: 1/4" = 1'-0"

**NOTE: SEE SOUTH AND EAST ELEVATIONS FOR ADDITIONAL EXTERIOR MATERIAL INFORMATION NOT NOTED, TYPICAL

GALV. SHEET MTL. FLASHING TO STORAGE ROOF / FACILITY OFFICE WALL
 CUSTOM PAINT COLOR TO MATCH COLOR BOARD ITEM#: IB
 EXTERIOR GRADE PLYWOOD W/ SELF ADHESIVE BITUMENE FLASHING TO BUILDING WALL BETWEEN FACILITY OFFICE / CARETAKERS RESIDENCE AND ADJACENT ENCLOSED STORAGE BUILDING



2 EAST ELEVATION
 SCALE: 1/4" = 1'-0"

ARCHITECTURAL COMPOSITION SHINGLES TO ROOF
 COLOR BOARD ITEM#: IE
 SCORED AND TEXTURED DRYVIT MATCH ARCHITECTURAL WALL DETAIL
 COLOR BOARD ITEM#: IC
 4" PLASTER TRIM
 COLOR BOARD ITEM#: IB
 CULTURED STONE VENEER
 COLOR BOARD ITEM#: IS
 ALUMINUM CLAD DOORS AND WINDOWS
 CUSTOM COLOR TO MATCH COLOR BOARD ITEM#: IB
 DRYVIT COLUMN TO COVERED PORCH
 COLOR BOARD ITEM#: IB

LOUVERED METAL GABLE VENT W/ PLASTER SURROUND
 COLOR BOARD ITEM#: IB
 PROFILED FASCIA GUTTER PAINT TO MATCH EAVE
 CUSTOM COLOR TO MATCH COLOR BOARD ITEM#: IB
 2x8 EAVE AND RAKE
 CUSTOM PAINT COLOR TO MATCH COLOR BOARD ITEM#: IB
 EXTERIOR WALL MOUNTED LIGHT FIXTURE
 -SEE SHEET E1.3 FOR ADDITIONAL INFORMATION TYPICAL
 OUTLINE OF ENTRANCE GATE IN FORE-GROUND