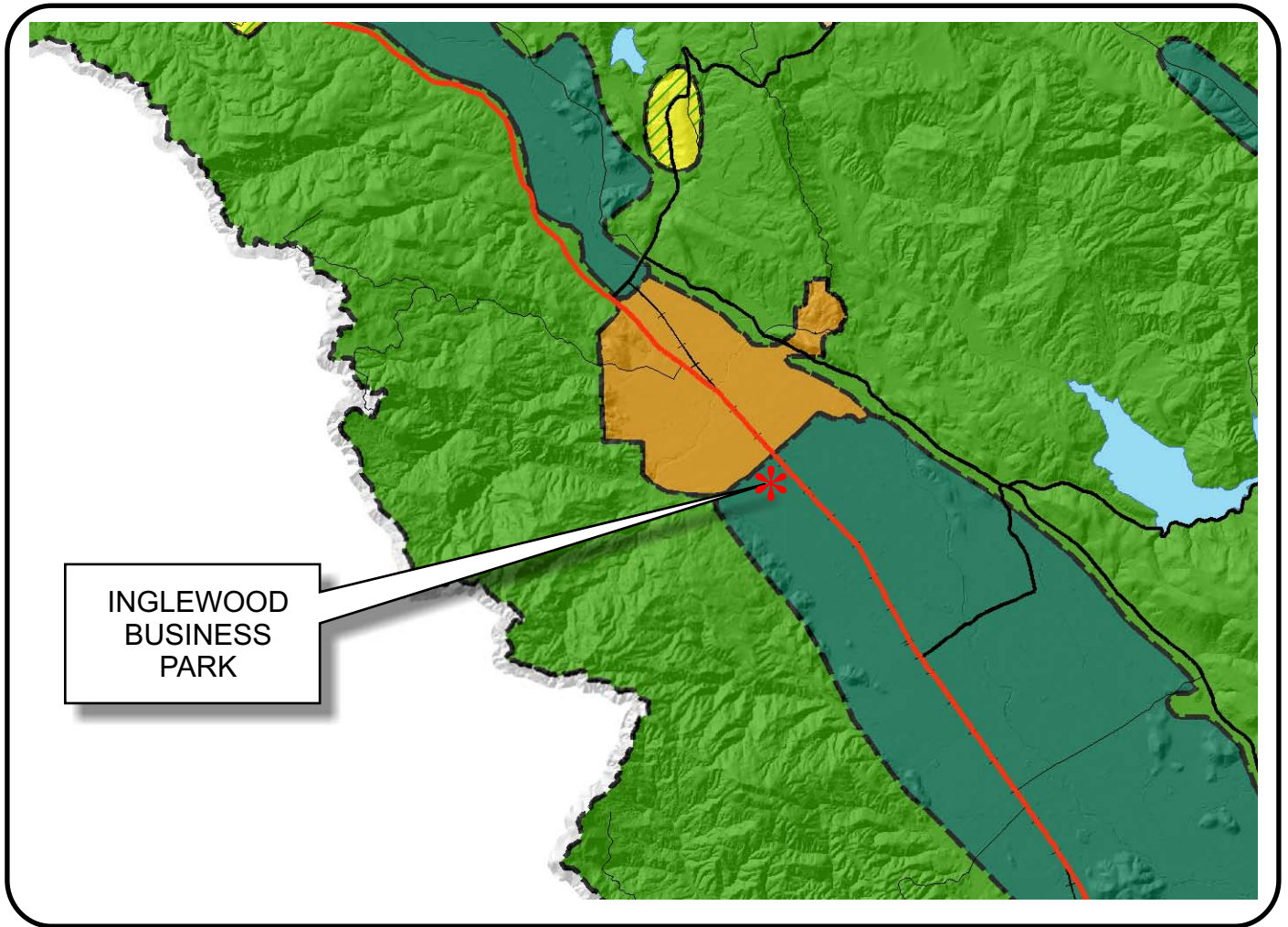








# NAPA COUNTY LAND USE PLAN 2008 - 2030





## LEGEND


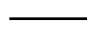


### URBANIZED OR NON-AGRICULTURAL

-  Cities
-  Urban Residential \*
-  Rural Residential \*
-  Industrial
-  Public-Institutional
-  Study Area

### OPEN SPACE

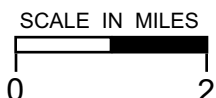
-  Agriculture, Watershed & Open Space
-  Agricultural Resource

### TRANSPORTATION

-  Mineral Resource
-  Railroad
-  Limited Access Highway
-  Major Road
-  Secondary Road
-  Airport
-  Airport Clear Zone
-  Landfill - General Plan

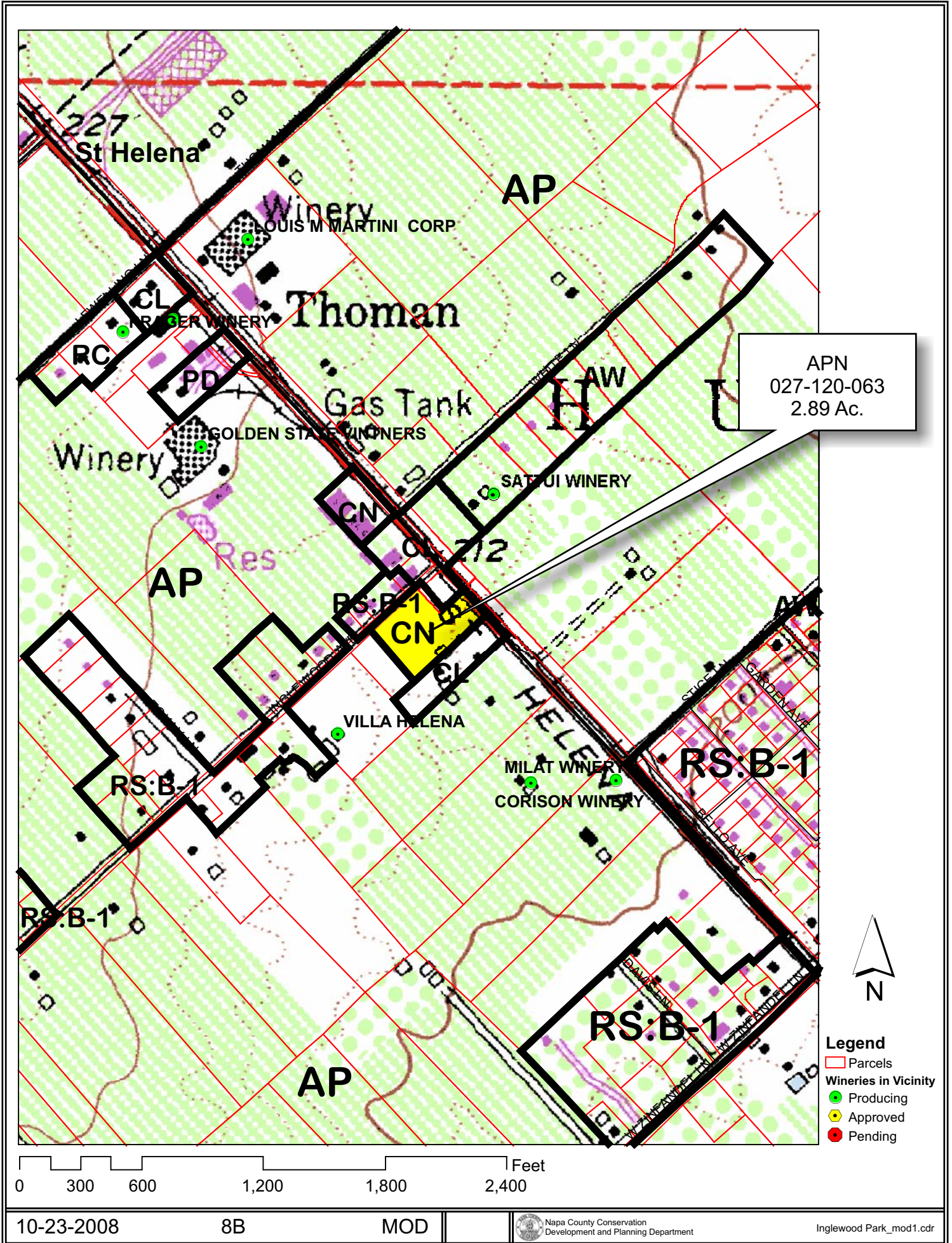
\* See Action Item AG/LU-114.1 regarding agriculturally zoned areas within these land use designations

APN  
027-120-063  
10-23-2008  
8B MOD





# INGLEWOOD BUSINESS PARK

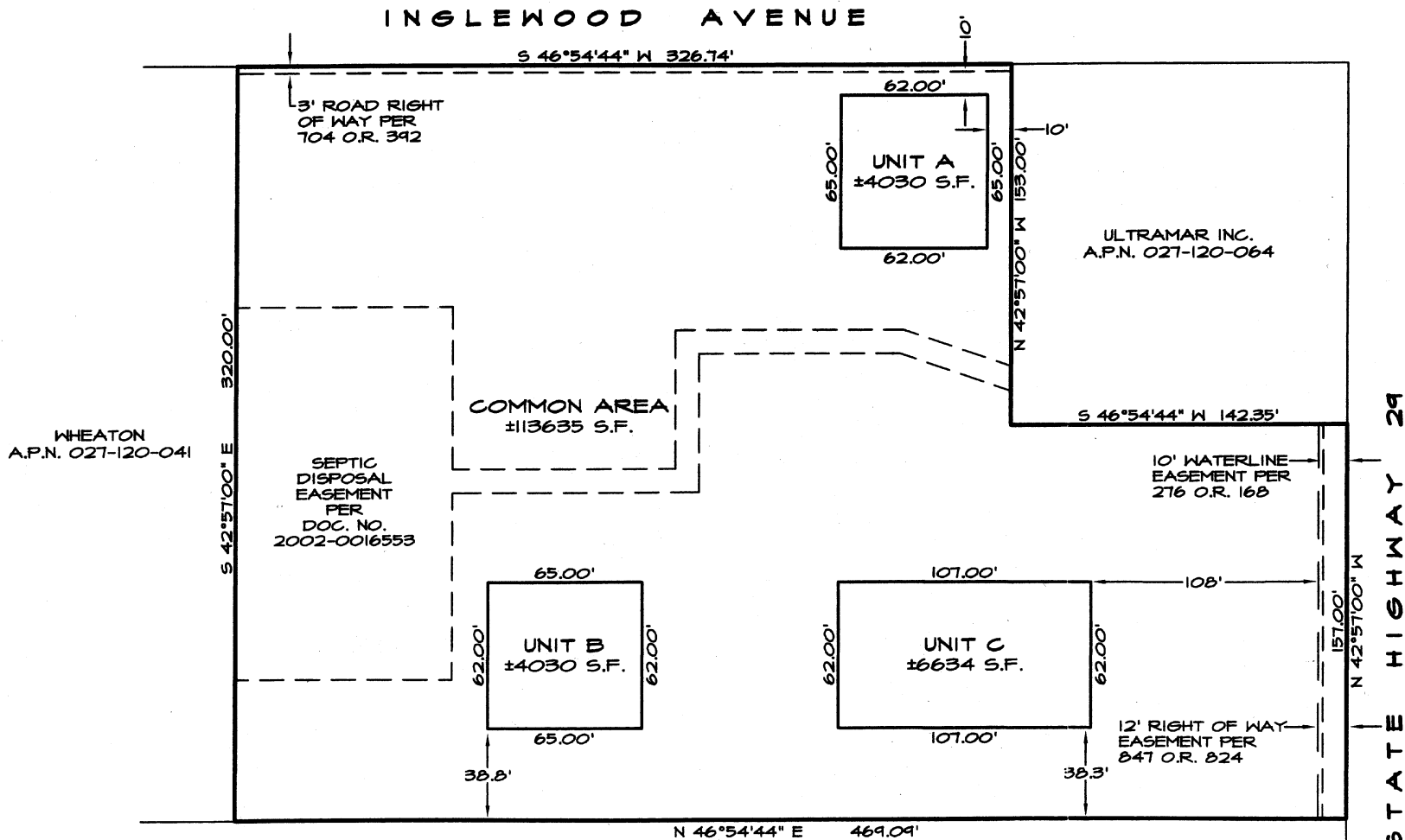


APN  
027-120-063  
2.89 Ac.

- Legend**
- Parcels
  - Wineries in Vicinity**
  - Producing
  - Approved
  - Pending

0 300 600 1,200 1,800 2,400 Feet

# INGLEWOOD BUSINESS PARK

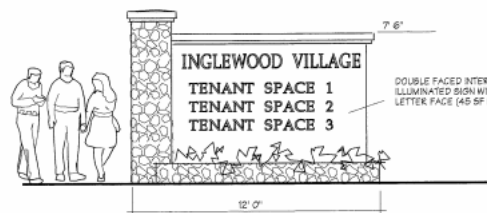
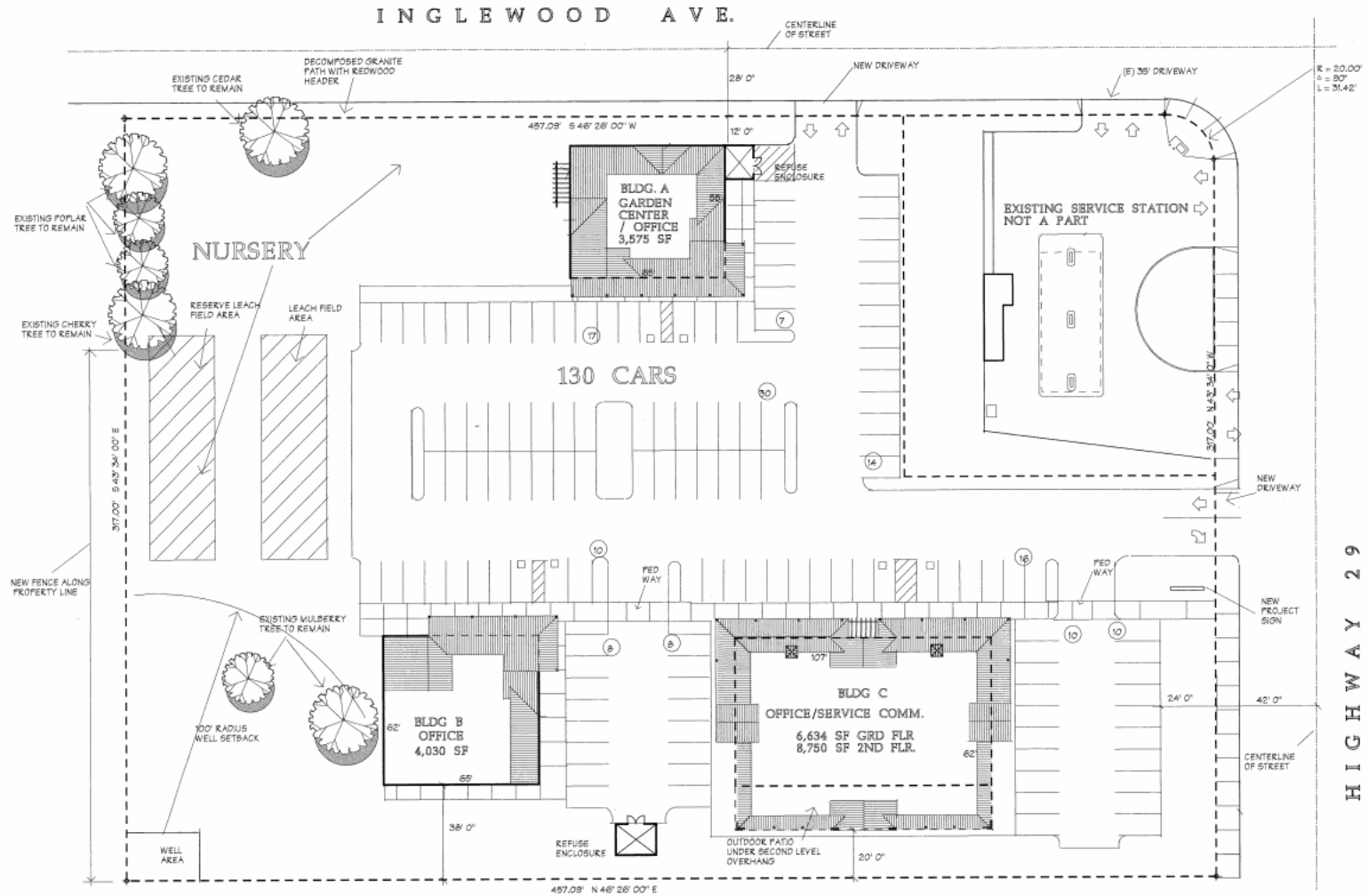


**TENTATIVE SINGLE LOT  
PARCEL MAP  
FOR  
COMMERCIAL AIRSPACE  
CONDOMINIUM PURPOSES**

TURNER  
A.P.N. 027-120-025

**INGLEWOOD VILLAGE BUSINESS PARK  
N.C.A.P.N. 027-120-063  
COUNTY OF NAPA, STATE OF CALIFORNIA  
AUGUST, 2008**

# INGLEWOOD BUSINESS PARK



PROJECT SIGN



## SUMMARY

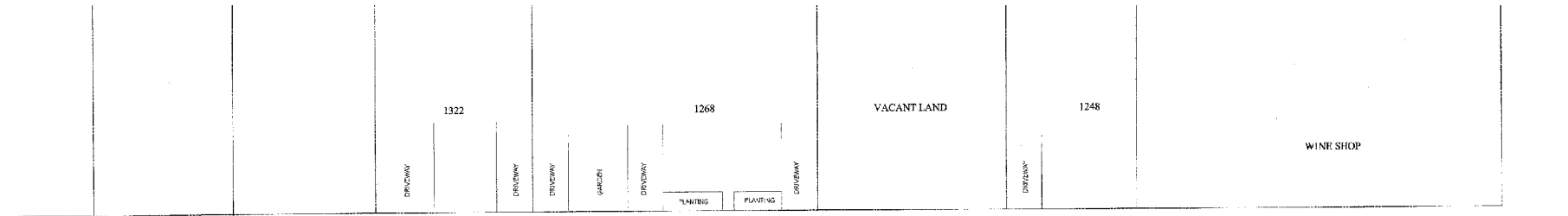
RETAIL:  
 22,989 SF AT 1/500SF = 46 STALLS REQUIRED  
 78 EMPLOYEES = 78 STALLS REQUIRED

---

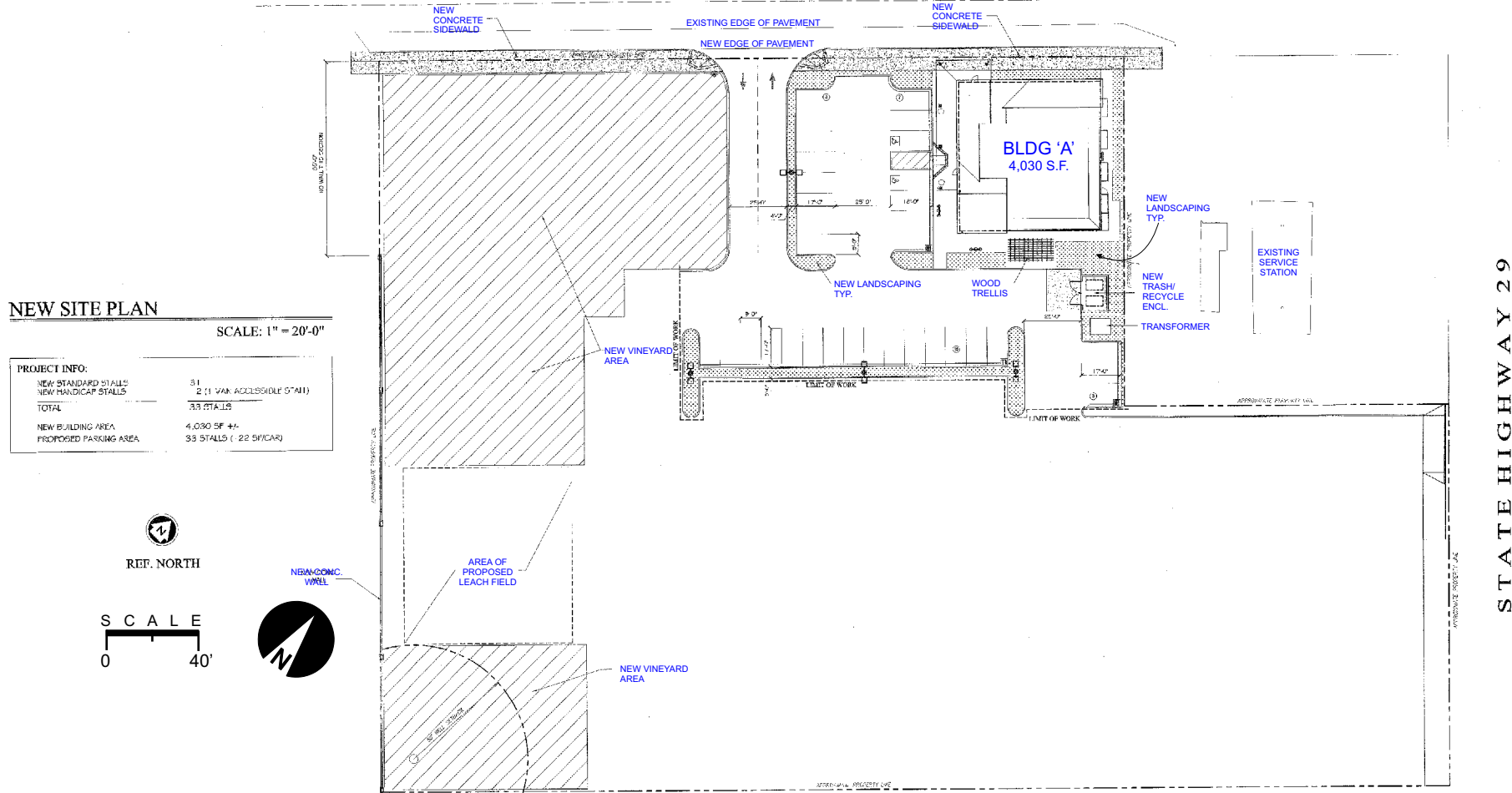
124 STALLS REQUIRED  
 130 STALLS PROVIDED



# INGLEWOOD BUSINESS PARK



## INGLEWOOD AVENUE



### NEW SITE PLAN

SCALE: 1" = 20'-0"

#### PROJECT INFO:

NEW STANDARD STALLS	31
NEW HANDICAP STALLS	2 (1 VAN ACCESSIBLE STALL)
TOTAL	33 STALLS
NEW BUILDING AREA	4,030 SF +/-
PROPOSED PARKING AREA	33 STALLS ( 22 SPICAR)

