



**AMENDED COUNTYWIDE
NON-DISPOSAL FACILITY ELEMENT**

for the

COUNTY OF NAPA

prepared by the

Napa County Solid Waste Local Task Force

May 1, 2008

Table of Contents

	Page
List of Abbreviations & Acronyms	3
Introduction	4
Facility Descriptions	
American Canyon Recycling and Disposal Facility.....	5
City Of Napa Materials Diversion Facility and Composting Facility.....	6
Clover Flat Landfill.....	8
Devlin Road Transfer Station.....	9
Jepson Prairie Organics.....	11
Pacific Union College Facilities and Plant Services.....	13
Syar Industries.....	14
Upper Valley Disposal Service Materials Recovery Facility and Composting Facility.....	15
Maps	
Napa County Service Provider Areas.....	16
South Napa County Recycling and Disposal Services.....	17
Local Task Force Comments	18
Public Notices (from each jurisdiction for Napa County Board of Supervisors and California Integrated Waste Management Board submittals)	
Resolutions (from each jurisdiction for Napa County Board of Supervisors and California Integrated Waste Management Board submittals)	

List of Abbreviations & Acronyms:

Abbreviation	Definition
AB 939	The California Integrated Waste Management Act of 1989, Assembly Bill 939
ACRD	American Canyon Recycling and Disposal
CCR	California Code of Regulations
CEQA	California Environmental Quality Act
CIWMB	California Integrated Waste Management Board
CIWMP	Countywide Integrated Waste Management Plan
DRTS	Devlin Road Transfer Station
LEA	Local Enforcement Agency
LTF	Local Task Force
MDF	Materials Diversion Facility
MRF	Materials Recovery Facility
NDFE	Non-disposal Facility Element
NCRWS	Napa County Recycling and Waste Services
NRWS	Napa Recycling and Waste Services
NVWMA	Napa-Vallejo Waste Management Authority
PRC	Public Resources Code
SRRE	Source Reduction and Recycling Element
UVA	Upper Valley Waste Management Agency

INTRODUCTION

California Public Resources Code (PRC), Sections 41730 et seq, requires every California city and county to prepare and adopt a Non-disposal Facility Element (NDFE) for all permitted solid waste facilities, other than disposal facilities (landfills and transformation facilities), which will be needed to implement local Source Reduction and Recycling Elements (SRRE's). This includes existing, expanded and new facilities, which divert or which will divert at least 5% of the total volume of materials received by the facility.

Under the California Integrated Waste Management Act of 1989 (Assembly Bill 939 or "AB939") the current reporting entities in Napa County are: 1) the City of American, 2) the City of Napa, 3) the Upper Valley Waste Management Agency (representing Yountville, St. Helena, Calistoga, and parts of unincorporated county), and 4) the remaining unincorporated county areas. When AB939 documents were originally approved by the state the City of Napa prepared its own NDFE and a joint NDFE was prepared for all other jurisdictions. In discussion with California Integrated Waste Management Board (CIWMB) staff, the Local Task Force determined that it would be in the best interest of all Napa County jurisdictions to prepare this amended NDFE for all jurisdictions inclusively.

The number of facilities included in previous NDFEs was limited. In order to ensure greater accuracy and a broader understanding of what types of facilities are currently used and planned to be used in order to implement local SRREs, additional facilities have been added. Many smaller recycling and waste diversion operations/facilities play a role in SRRE program implementation, however only facilities that play a significant role have been added to this current NDFE amendment. Additional non-disposal facilities may be identified and utilized as circumstances warrant, and will be included in future amendments and revisions to the county's NDFE.

Napa County has prepared, adopted and hereby transmits to the AB939 reporting entities of Napa County the county's NDFE, as required by PRC Section 41730. The county is also submitting a copy of its NDFE to the CIWMB for review and approval. The county's NDFE will be incorporated into the County Integrated Waste Management Plan.

A draft of this NDFE was submitted to the Napa County Local Task Force (LTF) for review and comment regarding the regional impacts of the Non-disposal facilities identified in this Element, in accordance with the requirements of PRC Sections 41734(a) and (b). As indicated by PRC Section 41735(a), the adoption or amendment of this Element is not subject to environmental review under the California Environmental Quality Act (CEQA).

AMERICAN CANYON RECYCLING AND DISPOSAL

Type of Facility:

American Canyon Recycling & Disposal (ACR&D) is a Material Recycling Facility (MRF). This facility is operated by the franchised hauler, Norcal Waste Systems, Inc. Residential and commercial recyclable materials are processed.

ACR&D handles source separated and commingled residential and commercial recyclable materials such as metal (aluminum, steel and tin), glass, plastic, paper (newspaper, cardboard, magazines and white paper). Yard waste and other plant debris are dropped at this facility, and then transferred to Norcal Waste Systems' composting facility, Jepson Prairie Organics.

This is a single stream recycling facility. The curbside material is brought into the facility where it is processed using a semi automated sorting system. This system consists of a number of screens and manned sorting stations where the recyclables are sorted into separate bunkers. The residual waste is removed for disposal. The recyclables are compacted, baled and shipped from ACR&D to both domestic and foreign recycling processors. The yard waste is brought to this facility, then transferred to Jepson Prairie Organics. In addition to materials received from American Canyon, the facility receives materials from Vallejo, Vacaville, and Dixon.

Facility Capacity:

It is expected that ACR&D will sort approximately 100-120 tons of recyclables a day and transfer 80 – 100 tons of yard waste a day. The capacity for this facility is 480 tons per 24 hour period.

Expected Diversion Rate:

For 2007, American Canyon Recycling and Disposal received and processed 27,739 tons of material and from that had an average of 7.53% residual. From January 2008 to present, they received 7,334 tons of material with an average of 9.1% residual.

Participating Jurisdictions:

American Canyon is the only Napa County jurisdiction using this facility. The MRF also receives materials from Vallejo, Vacaville, and Dixon.

Other Information:

The facility has submitted a Transfer Processing Report (TPR) to Solano County for subsequent submittal to the state. The result of the accepted report would be a temporary permit to operate as a Transfer Processing Facility, allowing continuous operation while an application is being prepared for a final permit.

Location: 2021 Broadway, Vallejo CA 94589. Northern Solano County, East of Highway 29, north of Highway 37. Longitude: -122.2523, Latitude: 38.14245

CITY OF NAPA MATERIALS DIVERSION FACILITY AND COMPOSTING FACILITY

Type Of Facility:

The Materials Diversion Facility (MDF) is permitted as a Large Volume Transfer/Processing Facility and a Composting Facility (green waste). Residential and commercial recyclable materials are processed at the Materials Diversion Facility (MDF). The MDF is owned by the City of Napa and operated by the franchised waste hauler, Napa Recycling and Waste Services (NRWS). NRWS also operates the separately permitted composting facility at the 6 acre site. A majority of the material received is from the City of Napa, City of Vallejo, City of American Canyon, and Unincorporated area of south Napa County.

The MDF handles source separated and commingled (single stream) residential and commercial recyclable materials such as metal (aluminum, steel, and tin), glass, plastic, paper (newspaper, cardboard, magazines, and office paper), wood, sheetrock, concrete and asphalt. Yard waste, other plant debris and a small amount of agricultural waste (pomace) are handled at the composting facility

Materials are primarily delivered to the facility via NRWS and Napa County Recycling and Waste Services (NCRWS) trucks from residential curbside recycling and yard waste pick-ups, and from commercial accounts. Non-single stream materials are also delivered by self haul customers.

Commingled materials are sorted through semi-automated methods, retaining the recyclables. The residual waste is removed for disposal. The recyclables are compacted, baled and shipped from the MDF. Recyclable materials are marketed to material end-markets. Organic material is composted by chipping, grinding, windrowing, curing, and screening. The finished compost is sold to both residential and commercial customers.

Facility Capacity:

The MDF is permitted to receive up to 360 tons of solid waste and recyclables per day. The Compost Facility is permitted to receive up to 200 tons of green material per day.

Expected Diversion Rate:

In calendar year 2006, the MDF received and processed 103,452 tons. A total of 2,860 tons went to the Devlin Road Transfer Station as residue for landfill disposal. This would give the MDF an overall diversion (recovery) rate of 97.2% for 2006. Certain specific processing areas will have higher recovery rates than others. For example, the disposed residue (including unrecovered recyclable materials) for the Clean MRF processing areas (where single-stream curbside material is sorted) is typically <10% while the yardwaste composting area is typically over 99% recovery (<1% residuals).

In calendar year 2007, the MDF received and processed a total of 99,508 tons. Of these 41,457 tons were processed in the compost area. A total of 2,838 tons went to the Devlin Rd Transfer Station as residue for landfill disposal. This would give the MDF an overall diversion rate of 97.2% for 2007.

Participating Jurisdictions:

The Cities of American Canyon and Napa, and Unincorporated Napa County including the Lake Berryessa region (solid waste service zones 1 & 2). Materials are also received by the Cities of Vallejo and Rio Vista in Solano County and City of Sonoma in Sonoma County and various other jurisdictions.

Other Information:

The MDF has a separate solid waste facility permit process select mixed loads of C&D.

A research food waste composting pilot program (12 cu yd/yr) is currently permitted and the City of Napa will continue to explore options for adding this component of the municipal waste stream to the composting operations.

Location:

820 Levitin Way, Napa, CA 94559. Southern Unincorporated Napa County, west of the intersection of State Highway 29 and south of Tower Road. Longitude: -122.26546
Latitude: 38.21047

CLOVER FLAT LANDFILL

Type Of Facility:

Clover Flat Landfill is a 78 acre Class III landfill operated by Clover Flat Landfill, Inc. It has a recycling buy back and drop off area, recyclable household hazardous waste collection area, electronic waste collection area, green waste and wood recycling operation for mulching, erosion control, and concrete recycling and crushing for several end uses. It is permitted as a Chipping and Grinding Activity Facility/ Operation. Chipped green material is also transferred off-site for composting. A construction and demolition debris recycling facility is scheduled to be operational at the landfill in 2008.

70-75% of the waste disposed at Clover Flat Landfill is delivered by the franchise hauler; the remaining 25-30% is self-hauled.

Although the Solid Waste Facility Permit lists the landfill closure date as 2021, diversion programs have already extended that date to 2030. It is anticipated that the construction and demolition debris recycling operation will extend the life of the landfill another ten to twenty-three years.

Facility Capacity:

The Landfill is permitted to accept up to 600 tons of incoming material per day, including green waste, asphalt, soil, and concrete. Excluded are buyback materials and materials delivered to the recyclable household hazardous waste collection area.

Expected Diversion:

61, 743 tons of materials were received by the landfill in 2006. 20,208 tons were recycled, or used as erosion control or alternative daily cover, for a diversion rate of 32.7%. This rate is likely to increase when the construction and demolition debris program commences.

Participating Jurisdictions:

Currently 98% of the waste delivered to the facility is from the jurisdiction of the Upper Valley Waste Management Agency (Cities of St. Helena and Calistoga, Town of Yountville, and northern unincorporated Napa County). The remaining 2% comes from the City of Napa, and Lake and Sonoma Counties.

Location:

4380 Silverado Trail, Calistoga, CA 94515. Northern Unincorporated Napa County, approximately four miles southeast of Calistoga. Longitude 38.584, Latitude -122.534

DEVLIN ROAD TRANSFER STATION

Type of Facility:

Devlin Road Transfer Station (DRTS) is a 35 acre regional transfer station operated by the Napa-Vallejo Waste Management Authority (NVWMA) a joint powers agency. NVWMA members include the Cities of Napa, American Canyon, and Vallejo (in Solano County), and County of Napa. NVWMA contracts with Northern Recycling & Waste Services for the transfer operations. DRTS is permitted by the Napa County Local Enforcement Agency as Large Volume Transfer Processing Facility. DRTS receives waste primarily from NVWMA member jurisdictions and a much smaller portion of the waste stream is received from twenty to thirty non-member jurisdictions in the surrounding area. Solid Waste is brought to DRTS via commercial franchised collection trucks, self haul commercial vehicles, and self haul residential vehicles. Approximately 35-45% of the material received at DRTS is self hauled (almost double the state average of 21.3%). Solid waste received at DRTS is processed on a traditional tipping floor prior to placement for truck haul to Keller Canyon Landfill in Contra Costa Landfill for disposal.

Loads identified at the scale house that consist of approximately 50% or more of construction and demolition (C&D) debris are directed to a separate processing area that sorts, processes, and recycles wood, metal, fiber, plastic and sheetrock. C&D processing includes mobile equipment and a hand sort line for processing and removing recyclable material. The DRTS site also houses a permanent household hazardous waste collection facility, a buyback and drop off recycling center, and a reuse area. The recycling center accepts all materials accepted in local curbside collection programs (aluminum, plastic, glass, cardboard, newspaper, scrap metal, etc) and in 2008 became a state certified buyback center for California Redemption Value materials. The reuse area allows customers to drop off items for reuse (household items, furniture, doors, construction materials, etc.) and/or purchase these items. A state certified used motor oil collection site is located at the recycle center.

Facility Capacity:

DRTS is permitted to receive 1,440 tons of solid waste per day.

Expected Diversion:

DRTS received 258,018 incoming tons of solid waste in 2006. The bulk of the diversion tonnage at DRTS comes from the construction-demolition program. It is estimated that currently approximately 100 tons per day of C&D materials are received at DRTS. The NVWMA/Northern Recycling and Waste Services agreement outlined a minimum of 25% diversion at DRTS in the first year of the contract (2005), increasing to a minimum of 35% diversion over the life of the contract to 2015.

Historically the reuse area has diverted approximately 85 tons per year (2006), while the recycling drop off area diverted approximately 280 tons in 2007.

Participating Jurisdictions:

The Cities of Napa and American Canyon, and the unincorporated County of Napa are primary users of DRTS. The City of Vallejo, located in Solano County, delivers over 50% of the material accepted at DRTS. The Cities of St. Helena and Calistoga, and Town of Yountville also deliver small amounts of material to DRTS.

Other Information:

The NVWMA expanded operations at DRTS by commencing operation of a C&D recycling/diversion program in July 2007. Phase One of the project is located on an existing 2.6-acre paved area immediately adjacent to the transfer station building utilizing mobile equipment including a portable tub grinder to sort, crush and recycle construction and demolition waste, C&D material that until this time was part of the general municipal solid waste stream at DRTS taken to other facilities for ultimate landfill disposal. Within two years, a new 41,600 square foot metal building will be constructed onsite to fully enclose all C&D recycling activities. Approximately 5,000 square feet of new roadway will be constructed to provide access to the C&D Recycling Program, with the initial operation and an additional 24,000 square feet of asphalt for the new building including building aprons and additional roadway. It is anticipated that this Phase Two development could increase the diversion rate to 75%.

Under the contract with Northern Recycling and Waste Services, it is expected that both the reuse and recycling volumes at DRTS will increase. The NVWMA/Northern contract outlines cost sharing incentives for diversion at DRTS.

Location:

889 Devlin Road, American Canyon, CA 94559. Southern Unincorporated Napa County, west of State Highway 29, and south of Tower Road. Longitude: -122.2607, Latitude: 38.20583

JEPSON PRAIRIE ORGANICS

Type of Facility:

This is a permitted Composting Facility. Jepson Prairie Organics (JPO) accepts food scraps and yard trimmings from commercial and residential sources. The 54-acre facility accepts all types of food scraps, including meat and bones. Commercial sources include restaurants, hotels and markets. This facility is owned and operated by Norcal Waste Systems, Inc

Materials are processed in 90 days after arrival at JPO. Yard trimmings and food scrap materials are delivered separately by Norcal trucks (contracted by American Canyon Recycling and Disposal) and other non-Napa County jurisdictions, then fed into an industrial-sized grinder and mixed to form a recipe with physical and chemical characteristics that are optimum for microbial decomposition. The blended material is mechanically pushed into a composting bag (200 feet long) with two 4-inch perforated pipes inside to maintain oxygen levels sufficient for degradation. The material remains in the bag for 60 days, during which time the material is monitored for temperature and oxygen levels to eradicate undesirable microbial life. At 60 days, the material is placed in windrows to cure the compost. The material cures for 30 days, during which the compost is moisture conditioned and agitated with a windrow turner (acting to reduce the particle size and re-introduce oxygen). The material is then passed through a trommel screen, which separates the larger pieces from the original product. Jepson Prairie reports that the resulting compost is higher in nitrogen than typical green waste compost.

JPO's compost is listed with the Organics Material Review Institute (OMRI) as an approved compost amendment on certified organic farms. JPO sells compost to vineyards, retail soil bagging operations, landscape material yards, highway erosion and control projects.

Facility Capacity:

JPO is permitted to accept up to 750 tons of food scraps and yard trimmings per day, with a total capacity of 225,000 cubic yards.

Expected Diversion:

Jepson Prairie received 94,347 tons of food/green waste in CY 2006. Of that waste, 889 tons were landfilled (.94%) for a diversion rate of approximately 99%.

Participating Napa County Jurisdictions:

JPO accepts material from yard trimmings from American Canyon, Vallejo, Dixon and Vacaville and food scraps from San Francisco and Oakland.

Other Information:

JPO's compost is OMRI certified. JPO sells compost to vineyards, retail soil bagging operations, landscape material yards, highway erosion and control projects.

Contact information for JPO is: Greg Pryor (800) 208-2370 Jepson Prairie Organics
235 North First Street, Dixon, CA 95620

Location:

This facility address is 6426 Hay Road, Vacaville, California and located at 38.31361 latitude and -121.8372 longitude in an area zoned as Agricultural Rural

PACIFIC UNION COLLEGE FACILITIES AND PLANT SERVICES

Type of Facility:

Pacific Union College Medium Volume Transfer Facility picks up, hauls, processes, and recycles material from the college and college owned housing and dorms. The facility is permitted to process up to 100 tons/day of solid waste. A majority of the solid waste is processed on sort-line equipment using manual labor to separate recyclables. Waste destined for landfill is compacted. The compacted waste is then transferred to Clover Flat Landfill for disposal. The facility also operates as a drop-off and buyback center for source separated recyclables.

Facility Capacity:

The permitted maximum amount of waste that can be received is 100 tons/day. The facility averages approximately 30-70 tons/month of incoming material.

Expected Diversion:

The total amount of solid waste received in 2006 was 667.32 tons. The diversion rate at the facility is not available.

Participating Jurisdictions: Pacific Union College and college owned property, including housing, dormitories and commercial establishments in the unincorporated town of Angwin (in northern unincorporated Napa County).

Location:

Facility and Plant Services, 205 Highland Oaks, Angwin, CA 94508.
Latitude: 38.57511 Longitude: -122.43921

SYAR INDUSTRIES

Type of Facility:

Concrete and Asphalt Recycler

Facility Capacity:

This facility is not permitted, therefore has no CIWMB-approved limit on capacity.

Expected Diversion:

In 2006, Syar reported receiving and processing 54,069 tons of concrete and asphalt. The diversion rate at this facility is not available.

Participating Jurisdictions:

At least 90- 98% of material received at this facility is from all of Napa County (inclusive of the Cities of Napa and American Canyon, and unincorporated Napa County).

Other Information:

The diversion at Syar Industries has played an important role in meeting state diversion mandates in the past. Napa County jurisdictions worked with CIWMB staff to establish a methodology that complied with the restrictions identified in AB 939 to include this “inerts” diversion in our Annual Reports.

Contact Information: Ladd Stephenson, Operations Manager, (707) 259-5840.

Location:

The facility address is 2301 Napa Vallejo Hwy, Napa, California, 94558.
Latitude: 38.270076 Longitude: -122.272003

UPPER VALLEY DISPOSAL SERVICE MATERIALS RECOVERY FACILITY AND COMPOSTING FACILITY

Type of Facility:

This is a regional Materials Recovery Facility (MRF) which receives and processes source separated and commingled recyclables from residential and commercial sources in northern Napa County. It is also a fully permitted Composting Facility (green/organic wastes) and processes both yardwaste collected through curbside programs and pomace (a grape harvest by-product). The same location is also permitted as a Chipping and Grinding Activity Facility/ Operation. It is privately owned and operated by Upper Valley Disposal Service which is also the franchised hauler for the region. The Upper Valley Waste Management Agency (a joint powers agency made up of the Cities of Calistoga and St.Helena, the Town of Yountville and northern unincorporated Napa County) provides oversight for this facility.

Facility Capacity:

Permitted capacity for the composting facility is 34,000 tons/year.

The current infrastructure capacity at the MRF is approximately 200 tons per day.

Expected Diversion:

The composting facility processed 16,673.44 tons of material in 2006 and 16,065.32 tons in 2007 of which 100% was diverted (composted).

In 2007 the MRF processed 13,828.88 tons of material with a 97% diversion rate (average 3% residual).

Participating Jurisdictions:

The facility serves the Cities of Calistoga and St.Helena, the Town of Yountville and northern unincorporated Napa County.

Other Information:

The facility was upgraded in 2001/2002 to accommodate single stream materials and achieve greater overall efficiencies. Single stream curbside collection began in 2002.

This composting facility is unique in that curbside greenwaste makes up 25% of total compost production while pomace (a wine making by-product) accounts for 75%.

In 2008, UVDS will be submitting a 5-year permit review application to the Local Enforcement Agency for the compost facility. The Local Enforcement Agency will review and comment on any previous or proposed operational changes.

Location:

The facility address is 1285 Whitehall Lane, St Helena, CA 94574. It is located in the County's unincorporated area at 38.47512 latitude and -122.43835 longitude.

SOUTH NAPA COUNTY RECYCLING & DISPOSAL SERVICES

1 NAPA RECYCLING & COMPOSTING FACILITY

820 Levitin Way, American Canyon, 707-255-5200

Daily Hours: 8am-4pm

Only accepts the following items—fees apply for most materials:

CALL FOR PRICING (See location #3 to recycle other materials)

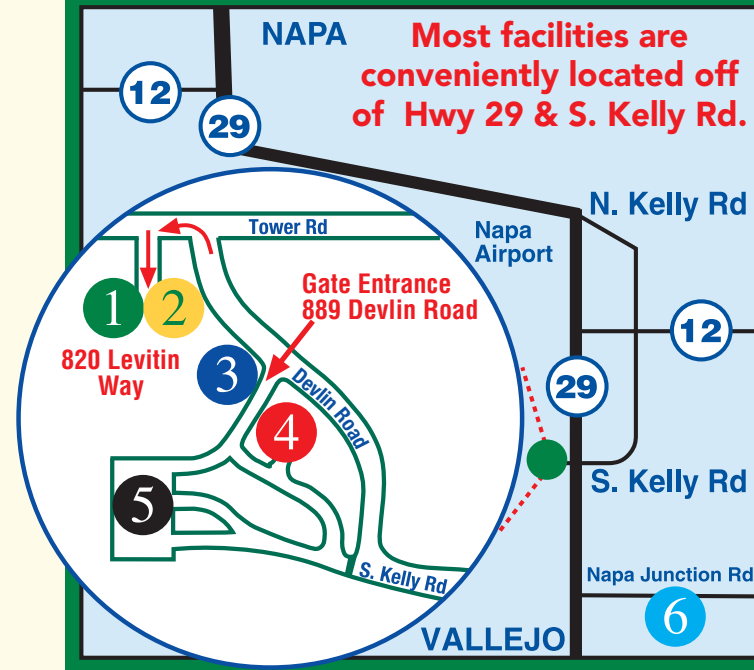
- Yardwaste (rolled sod, leaves, branches, grass)
- Wood (Non-treated wood with few nails. No painted wood or furniture, railroad ties or telephone poles)
- Clean Dirt (no rock/gravel)
- Concrete
- Tires (less than 22 inches)
- Metal Appliances (all fluids drained)
- FREE DROP-OFF: Scrap Metal
- FREE DROP-OFF: E-waste (computer equipment and TVs)

AVAILABLE FOR PURCHASE:

Compost & high quality topsoil

Delivery available: 10 yard minimum for a fee

Please call 255-5200 for pricing & a delivery quote



2 NAPA RECYCLING & WASTE SERVICES / NAPA COUNTY RECYCLING & WASTE SERVICES



820 Levitin Way, American Canyon, 707-255-5200

Hours: M-F 8am-5pm www.naparecycling.com

Mail to: Napa Recycling & Waste Services

PO Box 239 • Napa, CA 94559

Please call with your residential or commercial refuse & curbside recycling questions, about equipment delivery, for rates on bulky items, or special collection services. Bill payments can be made at the Levitin Way location.

3 NAPA-VALLEJO REUSE & RECYCLE CENTER

889B Devlin Road, American Canyon, 707-258-9018 Daily Hours: 8:30am-3:30pm

Drop-off or shop for reusable items in good condition. Browse the yard for items such as clothes, books, file cabinets, desks, doors, windows, tools, lawn & garden equipment. **Lowest prices**

BUYBACK & RECYCLING DROP-OFF:

aluminum, tin, plastic bottles, glass bottles, flattened cardboard, mixed paper, & scrap metal are accepted.

You can also visit www.napamax.org to post or search for reusable items AT NO COST.

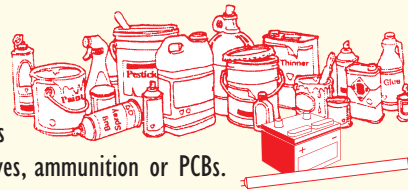
4 NAPA-VALLEJO HOUSEHOLD HAZARDOUS WASTE COLLECTION FACILITY

889A Devlin Road, American Canyon, 1-800-984-9661

Every Friday & Saturday 9am-4pm

Items accepted include: insecticides, paints, thinner, solvents, cleaners, syringes, outdated medicines, BBQ propane tanks, old gasoline, batteries automotive fluids & fluorescent bulbs. No radioactive materials, explosives, ammunition or PCBs.

You can transport only 15 gallons or 125 pounds maximum per trip.



HOUSEHOLDS

No appointment required
No charge

BUSINESSES

Appointment required
Charge for service
Call 1-800-984-9661

5 DEVLIN ROAD TRANSFER STATION

889 Devlin Road, American Canyon, 707-252-0500

Daily Hours: 8am-4pm

Refuse or garbage. Bulky items (appliances, furniture, mattress, etc.). Refrigerators accepted, including freon removal for a fee.

Items accepted daily 8am-4pm—at no fee—include: auto batteries, latex paint, antifreeze, used motor oil & filters.

This is a California Certified Oil Collection Center that offers 16¢ per gallon for used oil.

6 STEEL MILL SUPPLY OF NAPA

659 Napa Junction Road, American Canyon, 707-226-3950 Hours: M-F 8am-4:00pm & Sat 8am-11:30am

Various scrap metal items including: ferrous/non-ferrous scrap, metal pipe, washers, dryers, refrigerators & freezers.

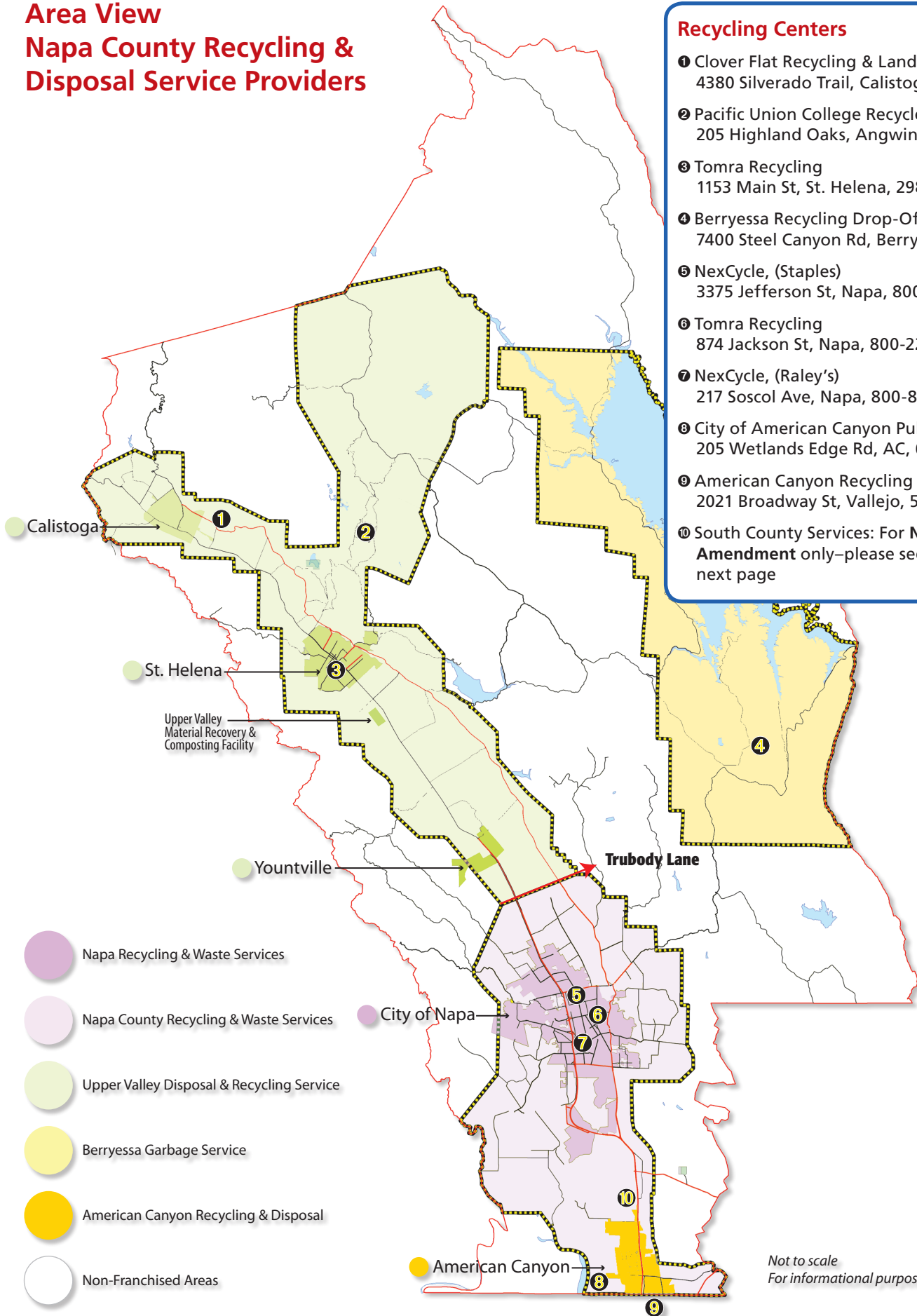
Depending on market, the Steel Mill will pay for certain metal items. Junk cars: restrictions apply, please call for details.



Area View Napa County Recycling & Disposal Service Providers

Recycling Centers

- ❶ Clover Flat Recycling & Landfill
4380 Silverado Trail, Calistoga, 963-7988
- ❷ Pacific Union College Recycle Center
205 Highland Oaks, Angwin, 965-7177
- ❸ Tomra Recycling
1153 Main St, St. Helena, 298-0714
- ❹ Berryessa Recycling Drop-Off
7400 Steel Canyon Rd, Berryessa, 226-9543
- ❺ NexCycle, (Staples)
3375 Jefferson St, Napa, 800-883-2274
- ❻ Tomra Recycling
874 Jackson St, Napa, 800-226-2453
- ❼ NexCycle, (Raley's)
217 Soscol Ave, Napa, 800-883-2274
- ❽ City of American Canyon Public Works
205 Wetlands Edge Rd, AC, 647-4550
- ❾ American Canyon Recycling & Disposal
2021 Broadway St, Vallejo, 552-3110
- ❿ South County Services: For **NDFE Amendment** only—please see detailed map next page



Not to scale
For informational purposes only

SOLID WASTE LOCAL TASK FORCE

1195 Third Street, Suite 101 • Napa, California 94559
Telephone: (707) 253-4471 • Fax: (707) 253-4545

May 1, 2008

Steve Lederer, Director
Department of Environmental Management
1195 Third Street Room 101
Napa, California 94559

Subject: Amended Nondisposal Facility Element for Napa County

Dear Mr. Lederer,

The Napa County Solid Waste Local Task Force (LTF) has prepared and collectively reviewed and approved the amended Nondisposal Facility Element (NDFE) attached. In our December 16, 2006 letter to you regarding submittal of the 5 Year Review of Napa's Countywide Integrated Waste Management Plan the LTF noted that the NDFE would need to be amended or revised to meet the requirements of PRC sections 41730-41736 and 14 CCR sections 18752-18754.

The amended NDFE has been submitted to the Cities of American Canyon and Napa, and the Upper Valley Waste Management Agency (representing Yountville, St.Helena, Calistoga and the northern unincorporated county) for adoption by resolution at a public hearing which has been publicly noticed by being published in a newspaper of general circulation at least three days in advance of the hearing [Reference: 14 CCR 18766(b)(1)]. The Napa County Board of Supervisors must adopt the NDFE and may also elect to incorporate it into the Countywide Integrated Waste Management Plan (COIWMP) at the same time or at the time of the second 5 year review of the COIWMP later this year.

We are concurrently submitting a copy of this amended NDFE to the California Integrated Waste Management Board for preliminary comments and will subsequently submit two copies to the California Integrated Waste Management Board for consideration and approval, which will include: 1) facility information, 2) copy of LTF comments, 3) copies of the public notice and, 4) copies of adopted resolutions approving the amendment (Reference: 14 CCR 18768).

Sincerely,

Amy Garden, Chair

cc: Kyle Pogue, CIWMB
Nancy Watt, Napa County Executive Officer
Gladys Coil, Clerk to the Napa County Board of Supervisors
Greg Pirie, Napa County Local Enforcement Agency
Leon Garcia, Mayor, City of American Canyon
Dorothy Roadman, American Canyon City Clerk
Robert Weil, Director, American Canyon Public Works Dept.
Lou Leet, City of American Canyon
Fred Simonson, City of American Canyon
Sara Cox, Napa City Clerk
Michael Parness, Napa City Manager
Jill Techel, Mayor, City of Napa

Kevin Miller, Napa City Materials Diversion Administrator
Sara Gallegos, Napa City Materials Diversion Analyst
Su Sneddon, Calistoga City Clerk
Delia Guijosa, St. Helena City Clerk
Michelle Price, Yountville Town Clerk
John Kara, Upper Valley Waste Management Agency
Mark Luce, Chair, UVWMA Board of Directors