



**Napa Sanitation District**

**General Manager's Report**

**for**

**October, 2017**

**Contents:**

- a. Transmittal Memo
- b. Budget Status and Cash Summary
- c. Key Information Graphs – Fund Balances, Treatment Plant and Collection
- d. Fund Balances
- e. Development Processing
- f. Construction Inspection
- g. Pollution Prevention
- h. Recycled Water Deliveries
- i. Biosolids Handling
- j. Collection System Maintenance
- k. Treatment Plant Operations
- l. Treatment Plant Maintenance & Laboratory
- m. Capital Project Expenditure Summary



## NAPA SANITATION DISTRICT

## General Manager's Report

*Dedicated to Preserving the Napa River for Generations to Come*

---

**DATE:** December 6, 2017

**FROM:** Timothy B. Healy, General Manager

**SUBJECT:** General Manager's Report for October, 2017

### **REGULATORY COMPLIANCE:**

Collection System Compliance:	0 Category 1 SSO's, 0 Category 2 SSO's, and 8 Category 3 SSO's
NPDES Permit (WWTP) Compliance:	Full compliance with all regulations
Air Quality Compliance:	Full compliance with all regulations
Recycled Water Compliance:	Full compliance with all regulations
Biosolids Compliance:	Full compliance with all regulations
Significant Comments:	None

### **FISCAL STATUS:**

Period Covered:	July 1, 2017 – October 31, 2017
Percent Fiscal Year:	33.3%
Operating Expenditures to date:	31.2%
Historical Expenditures to date:	39.7%
Significant Comments:	Typically the "Operating Expenditures to date" would include an intrafund transfer from Operating to Capital. However, cash flow in the Capital Fund has been sufficient this year. We will monitor this closely and make the fund transfer when funds become low in the Capital Fund.

### **PERSONNEL:**

Significant events for the month of October, 2017 in the Human Resources Department:

New Hires:	Karl Ono, Associate Engineer
Separations:	None
Promotions:	Matt Lemmon promoted to Senior Civil Engineer
Recruitment Activities:	Continued recruitment for Collection System Worker-in-Training, Operator-in-Training and Laboratory Assistant.
Injuries:	None.

*Summaries of Operational Highlights are on following pages.*

### **COLLECTIONS:**

Significant events for the month of October 2017 in Collection System Maintenance include:

- The District had 0 Category 1 Sanitary Sewer Overflows (SSO's), 0 Category 2 SSO's and 8 Category 3 SSO's during the month. (A Category 1 is defined as an SSO that reached a drainage channel and/or surface water or; an SSO that reached a storm drain pipe that was not fully recovered and returned to the sanitary sewer system. A Category 2 is defined as an SSO that is equal to or greater than 1,000 gallons that did not reach a surface water. A Category 3 is defined as an SSO that is less than 1,000 gallons that did not reach a surface water. These are usually minor overflows of less than 10 gallons from cleanouts on District laterals that can be cleaned up by the crews.)
- The repair crew installed 3 cleanouts, repaired 1 cleanout and replaced 1 lateral. Additionally, the service response/programs crew completed 59 work orders in support of the grease and odor control program, responded to 54 customer requests for service (25 were NSD problem) and closed out 294 mark and locate request tickets.
- The preventative maintenance crews ran work orders on 102 laterals, cleaned approximately 58,257 feet of main line and CCTV inspected 30 laterals. The CCTV truck was out of service for upgrade.
- Due to the wildfires, the Collections department was tasked with separating 133 laterals from the collection system which involved excavating an average of 5 feet, cutting the lateral and plugging the ends. The repair crew completed 51 of these separations.

### **TREATMENT PLANT:**

Significant events for the month of October 2017 in the Treatment Plant Department:

#### **Plant Operations:**

- For October 2017, the plant's influent flow was 183 MG as compared to last year flow for October 2016 of 212 MG
- There was no flow to the Napa River for October 2017
- The production of recycle quality occurred for 30 days during October 2017 with a total distributed flow of 72.91 MG.
- There was .0" rain fall for October 2017 as compared to 3" rain fall for October 2016.
- Pond 4 end of the month recorded level reading was 28.96" as compared to October 2016 of 69.10". Total remaining pond capacity for October 2017 was 54.7% as compared to October 2016 remaining capacity of 23.4%.

#### **Power Consumption and Production:**

- This October power consumption purchased from PG&E was 367 MWH in comparison to October 2016 purchase of 436 MWH.
- Cogeneration unit ran 744 of 744 hours for the month – 100% uptime, averaging 317.93 Kw

- Solar generation in October was 140 MWH, compared to 153 MWH in September.

Maintenance:

Significant events for the month of October, 2017:

Process Maintenance

- Cogeneration unit monthly emission test - in compliance with BAAQMD permit.
- Daft air compressor #2/replaced motor
- Rebuilt TWAS pump and gearbox
- Replaced ARV's at Area Drain pumping station
- Rebuilt speed reducer for DAF Clarifier drive
- Installed new pump/ River Park #1
- ARV replacement on Primary's influent pipe
- Replaced core on Neuros Blower #3

Projects

- Installed Evoqua CL2 analyzers – west gallery at 1<sup>st</sup> turn, cross-over and EFF-001
- Installed Evoqua CL2 analyzers – east gallery at 1<sup>st</sup> turn and cross-over
- Install soft start on Flare Blower Motor
- Completed CIP 18718; condition assessment of Secondary and Floc Clarifiers

Standby Power

- Plant generators operational testing only
- Riverpark, West Napa operational testing only
- Stonecrest ran 50hrs under emergency use

Influent Pumps

- All pumps operational

Laboratory:

- Monthly composite **Influent (INF-001)** monitoring was conducted on October 3<sup>rd</sup>, 2017. Monthly Cyanide monitoring was conducted on October 3<sup>rd</sup>. Sample analysis indicated no unusual results and all parameters were within local limits except for the following:  
**Sodium:** 100 mg/L. Local Limit: 90 mg/L
- Monthly **Recycle Effluent (REC-001)** monitoring was conducted on October 3<sup>rd</sup>, 2017. Sample analysis indicated no unusual results and all parameters were within the state's Water Reuse Requirements and the District's Recycled Water limits.

**RECYCLING:**

Significant events in the Recycling Department for October 2017 include:

- Staff approved the irrigation service connection of one facility in the Gateway Business Park.
- Recycled water delivered for the month of October 2017 (75.463 million gallons), as compared to October 2016 (65.062 million gallons) is higher due to golf course, vineyard and commercial landscape demand. Delivered recycled water volume represents the sum of all use site flow meter consumption values.
- Staff continued land application of biosolids at the Jameson Reuse Site.

**POLLUTION PREVENTION:**

Significant events in the Pollution Prevention and Outreach Division for October 2017 include:

- There was one facility tour given in October.
- The Napa Safe Medication Collection Program is temporarily on hold while we make sure we are in compliance with the new California Board of Pharmacy regulations. The total amount of unneeded medications collected since program inception in September 2010 is 20,802.2 pounds.
- The District did not issue any Toilet or ESME Washer Rebates in October.

**ENGINEERING / CAPITAL PROJECTS / DEVELOPMENT:**

Significant events occurring in the Engineering Division for October 2017 include:

- Consultant continued design of the West Napa Pump Station Rehabilitation Project.
- Consultant continued design of the Headworks Equipment Replacement Project.
- Staff issued notice to proceed to the contractor for the Recycled Water Reservoir Improvements Project.
- Staff continued design of the 2018 Collection System Rehabilitation Project.
- Consultant continued design of the Browns Valley Trunk Project.
- Consultant began design of the Pond 1 Dredge Project.
- Consultant and Staff continued work on Phase 1A of the Asset Management Program.
- Contractor continued construction of the MST Recycled Water Pipeline Expansion Project.
- Contractor continued construction of the Soscol/Sousa Trunk Rehabilitation Project.
- Contractor continued construction of the 2017 Collection System Rehabilitation Project.

- Contractor continued construction of Manhole Adjustment Project – Phase VI.
- Staff issued notice to proceed to contractor for the Basin H Manhole Rehabilitation Project.
- Staff continued construction of the Upper Lateral Basin L Pilot #2 Project.
- Staff issued notice to proceed to contractor for the Earthquake Repair Project.
- Staff conducted smoke testing on 3<sup>rd</sup> Street to identify potential sources of inflow.
- Staff reviewed 35 sets of development plans and deemed 20 sets of plans complete. The approved plans consisted of seven residential buildings, eight tenant improvements, two public laterals, one residential lateral, and two recycled water laterals.

**Budget Status & Cash Summary - July 1, 2017 - October 31, 2017 (33.3% of the year)**

<i>Expenditures</i>	<b>FY 17-18 Budget</b>	<b>Expenditures to date</b>	<b>Encumbrances</b>	<b>Committed to date</b>	<b>Remaining Balance</b>	<b>Percent Committed</b>
<b><u>Operating</u></b>						
Salaries & Benefits	\$9,581,300	\$2,445,346	\$2,148	\$2,447,495	\$7,133,805	25.5%
Services & Supplies	6,054,300	1,441,839	1,511,178	2,953,017	3,101,283	48.8%
Taxes	28,650	-	-	-	28,650	0.0%
Debt Service	4,777,450	3,739,729	-	3,739,729	1,037,721 (1)	78.3%
Intrafund Transfers	8,900,000	-	-	-	8,900,000	0.0%
<b>Total Operating:</b>	<b>\$29,341,700</b>	<b>\$7,626,914</b>	<b>\$1,513,326</b>	<b>\$9,140,241</b>	<b>\$20,201,459 (2)</b>	<b>31.2%</b>
<b><u>Capital</u></b>						
Bldgs/Improvements & Equip	\$33,210,500	\$3,272,343	\$6,192,262	\$9,464,605	\$23,745,895 (3)	28.5%
Intrafund Transfers	3,630,000	389,553	-	389,553	3,240,447	10.7%
<b>Total Capital :</b>	<b>\$36,840,500</b>	<b>\$3,661,896</b>	<b>\$6,192,262</b>	<b>\$9,854,158</b>	<b>\$26,986,342</b>	<b>26.7%</b>
<b>Grand Total Expenditures:</b>	<b>\$66,182,200</b>	<b>\$11,288,810</b>	<b>\$7,705,588</b>	<b>\$18,994,398</b>	<b>\$47,187,802</b>	<b>28.7%</b>

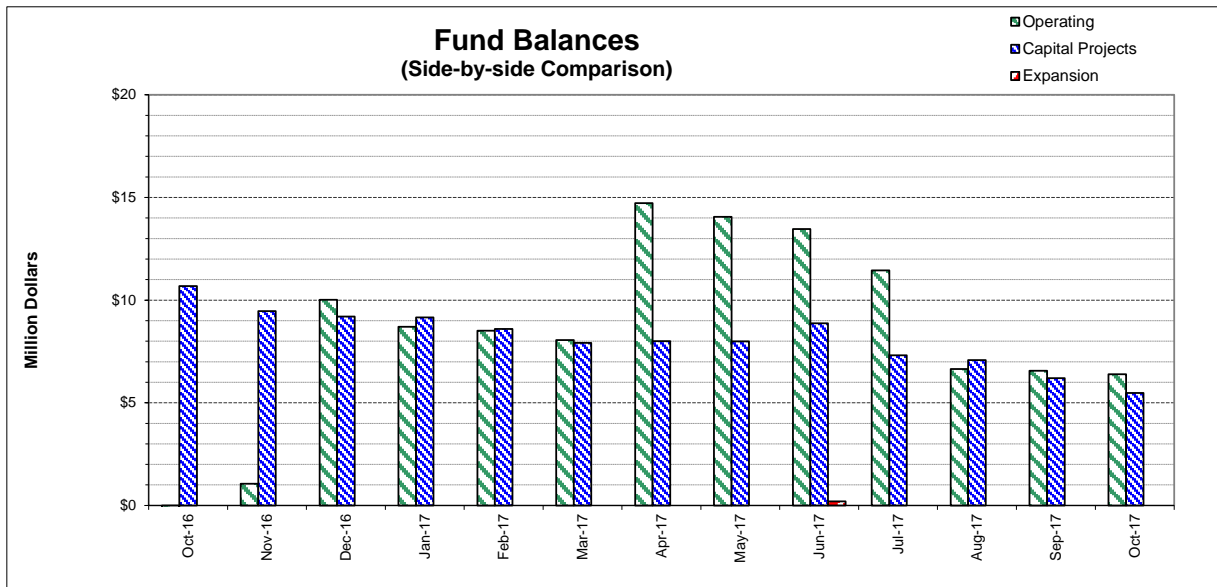
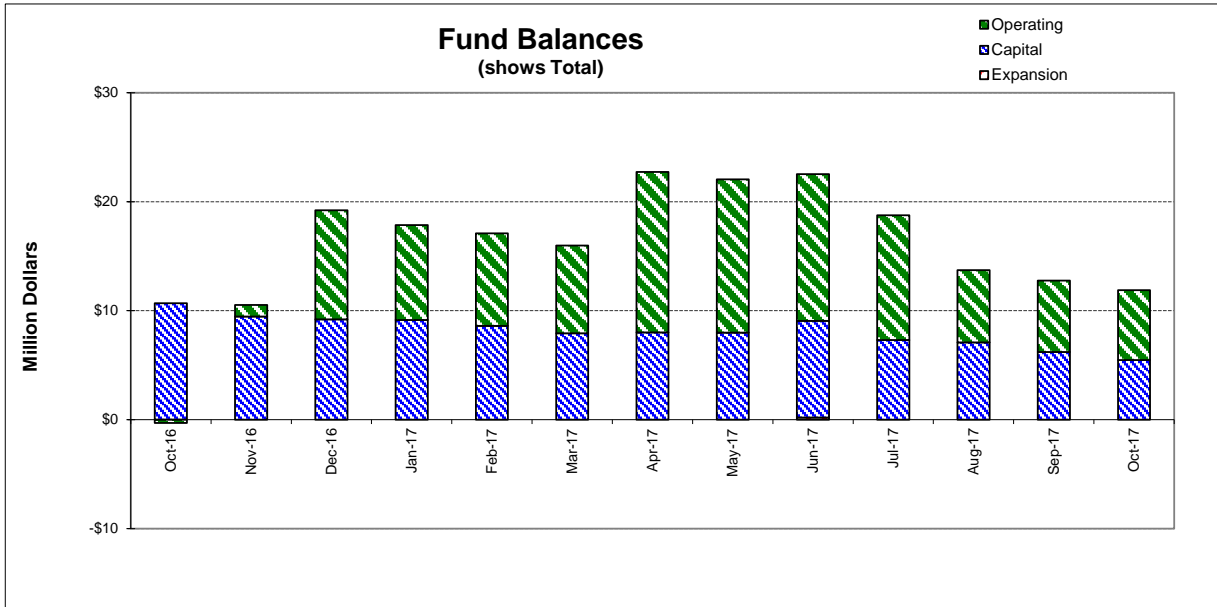
<i>Revenues</i>	<b>FY 17-18 Budget</b>	<b>Collected to date</b>	<b>Encumbrances</b>	<b>Received to Date</b>	<b>Uncollected Revenue</b>	<b>Percent Collected</b>
<b><u>Operating</u></b>						
Use of Money/Property	\$896,000	\$368,455		\$368,455	\$527,545	41.1%
Intergovernmental	\$15,000	\$0		-	15,000	N/A
Charges for Services	27,429,100	1,636,087		1,636,087	25,793,013	6.0%
Miscellaneous Revenues	61,000	370,486		370,486	(309,486) (4)	607.4%
Donations/Contributions (Capital Labor)	-	294,068		294,068	(294,068) (5)	N/A
<b>Total Operating:</b>	<b>\$28,401,100</b>	<b>\$2,669,097</b>		<b>\$2,669,097</b>	<b>\$25,732,003</b>	<b>9.4%</b>
<b><u>Capital</u></b>						
Use of Money/Property	\$0	\$287		\$287	(\$287)	N/A
Capacity Charges	3,630,000	321,249		321,249	3,308,751	8.8%
Intergovernmental	4,076,000	1,180,941		1,180,941	2,895,059	29.0%
Bond/Loan Proceeds	10,137,000	-		-	10,137,000	0.0%
Sale of Assets	25,000	6,900		6,900	18,100	N/A
Miscellaneous Revenues	-	6,870		6,870	(6,870)	N/A
Intrafund Transfers	12,530,000	516,816		516,816	12,013,184	4.1%
<b>Total Capital:</b>	<b>\$30,398,000</b>	<b>\$2,033,062</b>		<b>\$2,033,062</b>	<b>\$28,364,938</b>	<b>6.7%</b>
<b>Grand Total Revenue:</b>	<b>\$58,799,100</b>	<b>\$4,702,159</b>		<b>\$4,702,159</b>	<b>\$54,096,941</b>	<b>8.0%</b>

**Cash on Hand as of 10/31/17**

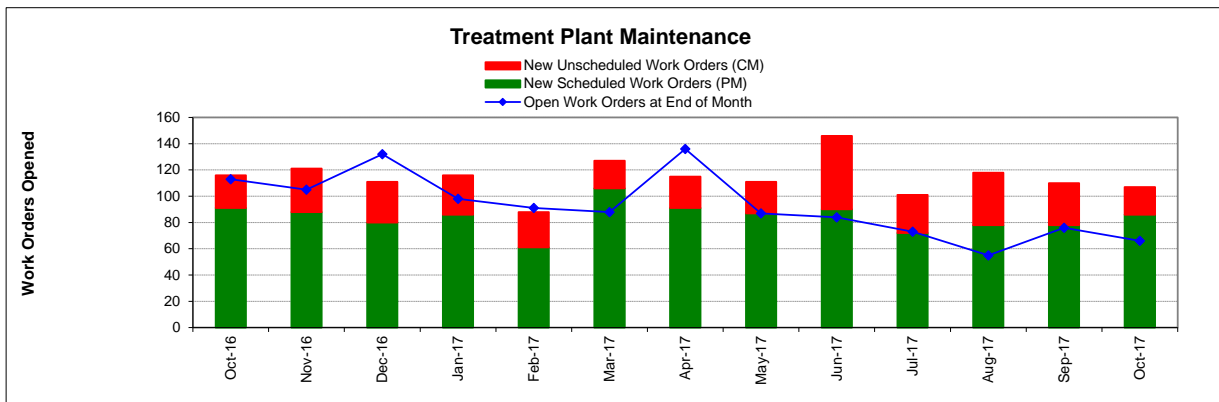
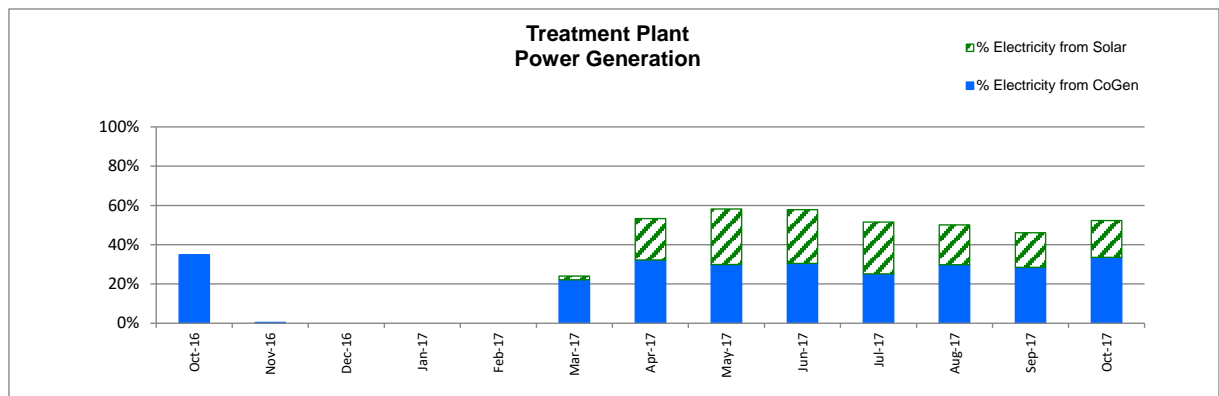
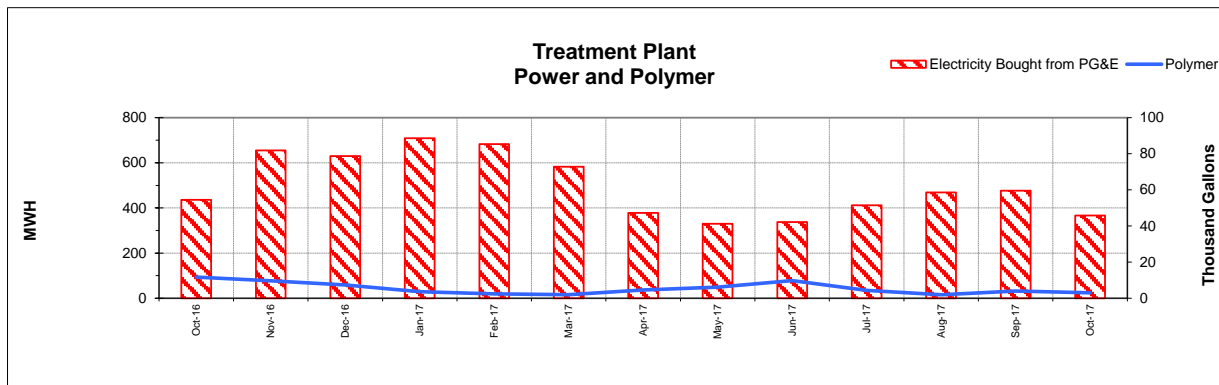
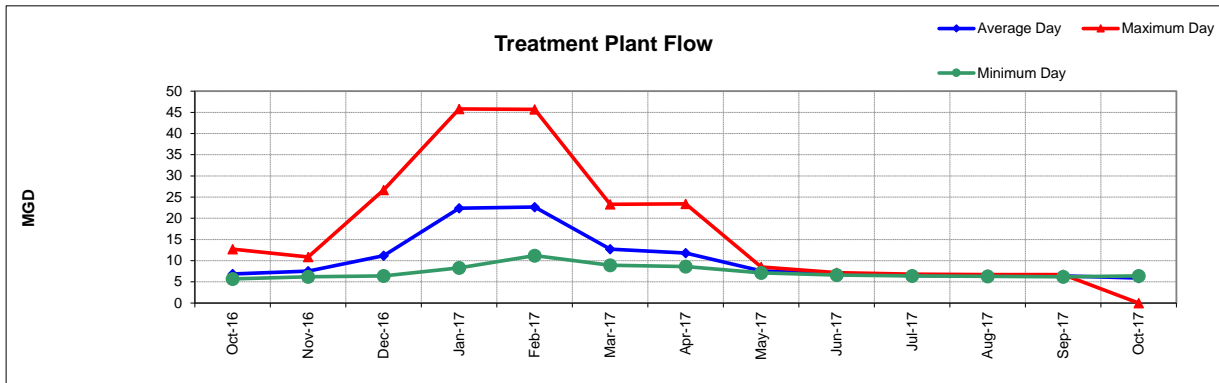
**\$11,874,526**

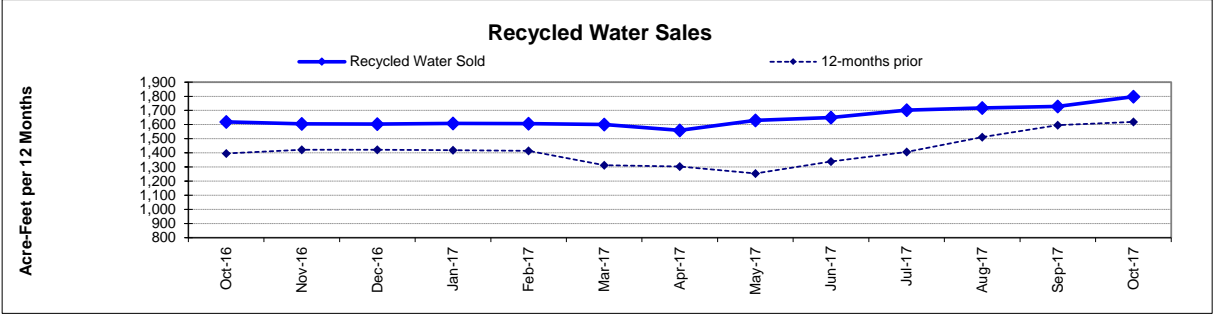
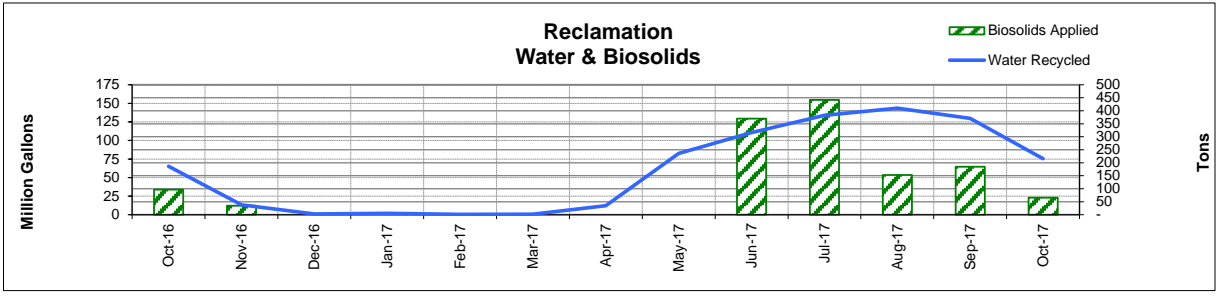
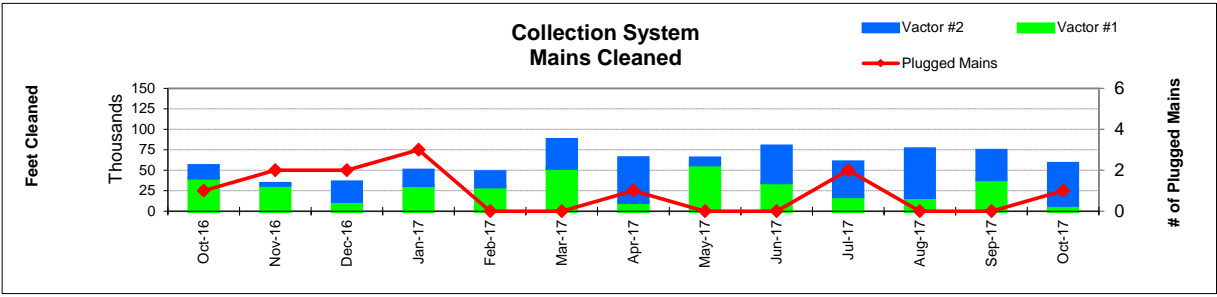
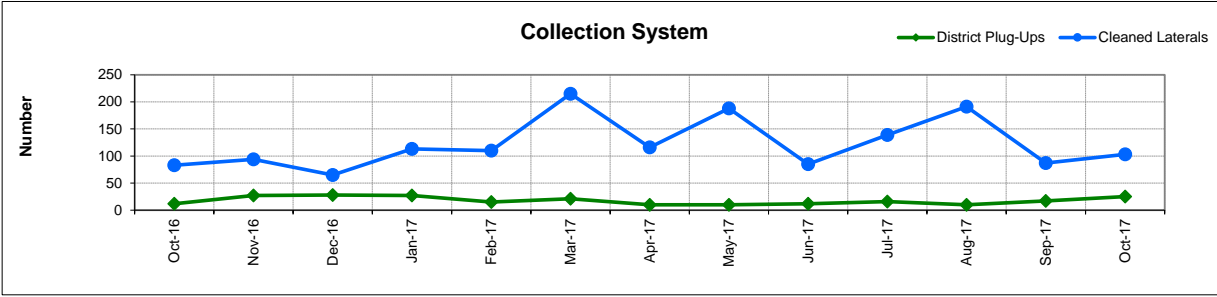
\*\*excluding Debt Service restricted funds  
10/31/17 - Effective Rate of Return = 1.16%

1. Series 2009B's and 2012A's principal/interest payments are made in Aug & Feb
2. Includes Debt Service and Intrafund Transfers; otherwise is 26.3%
3. See Capital Project Status report for details
4. Includes reimbursement from NBWRA from FY 16-17.
5. In-house Labor for Capital Projects (Contra acct for Salaries)









**FUND BALANCES - MONTHLY**

<b>CATEGORY</b>	<b>Oct-16</b>	<b>Nov-16</b>	<b>Dec-16</b>	<b>Jan-17</b>	<b>Feb-17</b>	<b>Mar-17</b>	<b>Apr-17</b>	<b>May-17</b>	<b>Jun-17</b>	<b>Jul-17</b>	<b>Aug-17</b>	<b>Sep-17</b>	<b>Oct-17</b>
<i>(Thousand Dollars)</i>													
7800	(293)	1,062	10,012	8,701	8,506	8,055	14,722	14,059	13,463	11,450	6,645	6,560	6,395
7850	-	-	-	-	-	-	-	-	-	-	-	-	-
<b>Subtotal Operating</b>	<b>(293)</b>	<b>1,062</b>	<b>10,012</b>	<b>8,701</b>	<b>8,506</b>	<b>8,055</b>	<b>14,722</b>	<b>14,059</b>	<b>13,463</b>	<b>11,450</b>	<b>6,645</b>	<b>6,560</b>	<b>6,395</b>
Capital Improvement Projects	10,685	9,470	9,204	9,154	8,598	7,921	8,001	7,995	8,867	7,312	7,083	6,205	5,480
Debt Proceeds	-	-	-	-	-	-	-	-	-	-	-	-	-
<b>Subtotal Capital</b>	<b>10,685</b>	<b>9,470</b>	<b>9,204</b>	<b>9,154</b>	<b>8,598</b>	<b>7,921</b>	<b>8,001</b>	<b>7,995</b>	<b>8,867</b>	<b>7,312</b>	<b>7,083</b>	<b>6,205</b>	<b>5,480</b>
<b>Total Discretionary Funds</b>	<b>10,392</b>	<b>10,532</b>	<b>19,216</b>	<b>17,855</b>	<b>17,104</b>	<b>15,976</b>	<b>22,723</b>	<b>22,054</b>	<b>22,330</b>	<b>18,762</b>	<b>13,728</b>	<b>12,765</b>	<b>11,875</b>
Expansion Fund (Restricted)	-	-	-	-	-	-	-	-	202	-	-	-	-
<b>Total Restricted Funds</b>	<b>-</b>	<b>-</b>	<b>-</b>	<b>-</b>	<b>-</b>	<b>-</b>	<b>-</b>	<b>-</b>	<b>202</b>	<b>-</b>	<b>-</b>	<b>-</b>	<b>-</b>
<b>TOTAL ALL FUNDS</b>	<b>10,392</b>	<b>10,532</b>	<b>19,216</b>	<b>17,855</b>	<b>17,104</b>	<b>15,976</b>	<b>22,723</b>	<b>22,054</b>	<b>22,532</b>	<b>18,762</b>	<b>13,728</b>	<b>12,765</b>	<b>11,875</b>

# DEVELOPMENT WORKLOAD - MONTHLY

CATEGORY	Oct-16	Nov-16	Dec-16	Jan-17	Feb-17	Mar-17	Apr-17	May-17	Jun-17	Jul-17	Aug-17	Sep-17	Oct-17
<b><u>Phone Requests</u></b>													
Maps/Drawings	8	7	4	9	7	4	5	5	5	3	4	5	6
Lateral Permits	-	-	-	-	2	2	-	-	-	-	-	-	-
Policy Questions	3	8	6	6	10	6	4	10	19	11	6	4	7
Development Questions	61	48	47	45	60	63	62	91	95	51	71	28	39
Miscellaneous	4	6	4	8	6	6	8	8	10	11	3	3	2
<b>TOTAL</b>	<b>76</b>	<b>69</b>	<b>61</b>	<b>68</b>	<b>85</b>	<b>81</b>	<b>79</b>	<b>114</b>	<b>129</b>	<b>76</b>	<b>84</b>	<b>40</b>	<b>54</b>
<b><u>Counter Requests</u></b>													
Maps/Drawings	1	-	1	2	1	-	1	3	6	2	-	1	-
Lateral Permits	13	14	7	11	5	11	10	10	18	15	6	16	4
Policy Questions	2	1	-	3	2	1	-	5	2	5	2	2	2
Development Questions	10	8	4	9	13	5	15	29	21	8	14	8	7
Miscellaneous	2	1	2	3	1	-	1	5	6	2	2	2	3
<b>TOTAL</b>	<b>28</b>	<b>24</b>	<b>14</b>	<b>28</b>	<b>22</b>	<b>17</b>	<b>27</b>	<b>52</b>	<b>53</b>	<b>32</b>	<b>24</b>	<b>29</b>	<b>16</b>
<b><u>Initial Request (Referrals)</u></b>	<b>7</b>	<b>21</b>	<b>23</b>	<b>17</b>	<b>11</b>	<b>25</b>	<b>17</b>	<b>22</b>	<b>20</b>	<b>10</b>	<b>11</b>	<b>14</b>	<b>11</b>
<b><u>Connection Permits Issued</u></b>													
Residential Permits	21	-	-	-	1	3	1	1	12	1	4	2	1
Commercial Permits	6	4	3	-	1	3	1	4	2	2	5	4	2
Industrial Permits	-	-	-	-	-	-	-	-	-	-	-	-	-
<b>TOTAL PERMITS</b>	<b>27</b>	<b>4</b>	<b>3</b>	<b>-</b>	<b>2</b>	<b>6</b>	<b>2</b>	<b>5</b>	<b>14</b>	<b>3</b>	<b>9</b>	<b>6</b>	<b>3</b>
Residential Units	21	-	-	-	1	3	1	2	35	1	4	2	1
Commercial Units	14	4	3	-	3	-	1	4	7	2	6	4	2
<b>TOTAL UNITS</b>	<b>35</b>	<b>4</b>	<b>3</b>	<b>-</b>	<b>4</b>	<b>3</b>	<b>2</b>	<b>6</b>	<b>42</b>	<b>3</b>	<b>10</b>	<b>6</b>	<b>3</b>
<b><u>Annexations</u></b>													
Submitted	-	1	-	-	-	-	-	-	-	-	-	-	-
Acreage	-	27.11	-	-	-	-	-	-	-	-	-	-	-
<b><u>Plans Reviewed</u></b>													
<b><u>Subdivisions/Sites</u></b>													
First Submittal	3	5	2	10	2	4	11	6	8	10	5	10	6
Second Submittal	3	-	2	2	3	7	6	8	4	5	7	1	1
Third Submittal	-	1	3	2	1	5	1	2	8	4	2	1	7
<b><u>Building/Tenant Improvements</u></b>													
First Submittal	8	5	4	10	5	7	4	9	17	8	19	15	9
Second Submittal	3	4	4	5	2	5	4	4	5	9	6	5	9
Third Submittal	3	8	6	2	1	10	3	7	8	6	7	3	2
<b><u>Miscellaneous Plan Reviews</u></b>	<b>-</b>	<b>-</b>	<b>-</b>	<b>1</b>	<b>-</b>	<b>-</b>	<b>-</b>	<b>-</b>	<b>-</b>	<b>-</b>	<b>-</b>	<b>-</b>	<b>-</b>
<b>TOTAL PLANS REVIEWED</b>	<b>20</b>	<b>23</b>	<b>21</b>	<b>32</b>	<b>14</b>	<b>38</b>	<b>29</b>	<b>36</b>	<b>50</b>	<b>42</b>	<b>46</b>	<b>35</b>	<b>34</b>

# INSPECTION WORKLOAD - MONTHLY

CATEGORY	Oct-16	Nov-16	Dec-16	Jan-17	Feb-17	Mar-17	Apr-17	May-17	Jun-17	Jul-17	Aug-17	Sep-17	Oct-17
<b><u>CONSTRUCTION</u></b>													
Locating Sewers	-	-	-	-	-	-	-	-	-	-	-	-	1
Permit Processing	-	-	-	-	-	-	-	-	1	-	-	-	-
Preconstruction Meetings	5	6	5	9	6	6	4	1	2	3	2	-	-
Inspections - Mains	-	10	1	-	-	6	1	-	4	-	-	2	-
Inspections - Manholes	81	27	89	46	16	15	61	1	9	3	3	40	72
Inspections - Laterals	7	37	11	24	17	50	14	3	8	11	8	6	2
Inspections - Cleanouts	29	71	20	42	38	74	25	-	2	4	3	4	4
Inspections - Review Video	2	2	4	1	-	-	-	2	-	3	-	-	-
Demo - Septic Tanks	-	-	-	-	-	-	-	-	-	-	-	-	-
Demo - Buildings	-	-	-	2	-	1	2	-	-	-	-	-	-
Update Record Drawings	-	-	-	-	-	-	-	-	-	-	-	-	-
<b>TOTAL</b>	<b>124</b>	<b>153</b>	<b>130</b>	<b>124</b>	<b>77</b>	<b>152</b>	<b>107</b>	<b>7</b>	<b>26</b>	<b>24</b>	<b>16</b>	<b>52</b>	<b>79</b>
<b><u>MISCELLANEOUS</u></b>													
Meter Readings	9	-	18	100	-	13	24	-	-	-	-	-	-
Washdown Facility Inspections	-	19	-	-	-	-	-	-	-	-	-	-	-
General Customer Assistance	13	-	6	11	11	10	12	11	30	-	28	30	31
City of Napa Water Discharge	-	-	-	-	-	-	-	-	-	34	-	-	-
<b>TOTAL</b>	<b>22</b>	<b>19</b>	<b>24</b>	<b>111</b>	<b>11</b>	<b>23</b>	<b>36</b>	<b>11</b>	<b>30</b>	<b>34</b>	<b>28</b>	<b>30</b>	<b>31</b>
<b><u>SPECIAL PROJECTS</u></b>													
	9	32	2	0	6	16	0	0	22	21	23	36	24

# POLLUTION PREVENTION WORKLOAD - MONTHLY

CATEGORY	Oct-16	Nov-16	Dec-16	Jan-17	Feb-17	Mar-17	Apr-17	May-17	Jun-17	Jul-17	Aug-17	Sep-17	Oct-17
<b><u>Outreach Activities</u></b>													
Plant Tours Conducted	7	8	0	1	4	11	3	4	1	2	1	9	1
Presentations Made	0	3	0	1	2	1	1	5	1	0	0	3	0
<b>Total Outreach Activities</b>	7	11	-	2	6	12	4	9	2	2	1	12	1
<b><u>Inspections Conducted</u></b>													
Food Service Facilities	-	-	37	21	53	35	25	-	-	-	-	-	-
Auto Body & Car Wash	-	-	-	-	-	-	-	-	-	-	-	-	-
Other	-	-	-	-	-	-	-	-	-	-	-	-	-
<b>Total Inspections</b>	-	-	37	21	53	35	25	-	-	-	-	-	-
<b><u>Compliance Issues</u></b>													
NOVs Issued	-	-	2	-	1	4	-	-	1	-	-	1	2
NOEs Issued	-	1	2	-	1	1	-	1	-	-	1	1	1
Non-Compliant-FOG	-	-	-	-	1	1	-	-	-	-	-	-	-
<b>Total Compliance Issues</b>	-	1	4	-	3	6	-	1	1	-	1	2	3
<b><u>Pollution Prevention</u></b>													
Clothes Washer Rebates	-	20	26	28	21	-	-	28	21	1	1	19	-
Toilet Retrofit Rebates	12	8	12	5	4	7	1	2	7	16	6	3	-
Pharmaceuticals Diverted (in lbs)	391	291	63	332	201	210	185	302	368	-	-	-	-

# RECYCLED WATER DELIVERIES - MONTHLY

	Acres	Oct-16	Nov-16	Dec-16	Jan-17	Feb-17	Mar-17	Apr-17	May-17	Jun-17	Jul-17	Aug-17	Sep-17	Oct-17
<b>MONTHLY (MG)</b>														
<b>Water Sold</b>														
Golf Courses	405.0	25.538	6.308	0.002	0.245	-	0.081	2.513	53.481	66.261	73.994	58.595	53.035	32.080
Cemeteries	5.0	0.328	0.010	0.000	-	-	-	-	0.705	0.754	0.834	1.116	0.634	0.833
Parks	18.5	0.205	-	-	-	-	0.002	0.001	0.624	1.020	0.902	0.866	0.650	0.333
Schools	21.0	0.630	0.014	0.006	0.005	-	0.005	0.013	1.396	2.604	2.250	2.178	1.613	1.485
Commerical	167.6	9.563	3.457	0.490	1.191	0.404	0.501	2.493	15.246	17.491	17.468	17.399	15.227	13.665
Vineyards	564.0	6.065	3.528	0.302	0.194	0.063	0.101	7.119	4.868	10.709	19.143	30.814	18.019	16.506
Trucked Water	175.0	0.124	0.008	0.188	0.009	0.002	0.015	0.018	0.027	0.051	0.474	0.602	0.274	0.197
<b>Subtotal Sales</b>	<b>1,356.1</b>	<b>42.454</b>	<b>13.326</b>	<b>0.988</b>	<b>1.644</b>	<b>0.469</b>	<b>0.705</b>	<b>12.156</b>	<b>76.347</b>	<b>98.891</b>	<b>115.065</b>	<b>111.571</b>	<b>89.451</b>	<b>65.099</b>
<b>District Use</b>														
Jameson	330.0	12.608	-	-	0.089	-	0.087	0.032	-	-	7.298	18.483	20.751	-
Somky	213.0	10.000	0.001	-	-	-	0.002	-	6.256	11.738	11.488	13.426	19.372	10.364
Fagundes/Airport	50.5	-	-	-	-	-	-	-	-	-	-	-	-	-
<b>Subtotal District</b>	<b>593.5</b>	<b>22.609</b>	<b>0.001</b>	<b>-</b>	<b>0.089</b>	<b>-</b>	<b>0.089</b>	<b>0.032</b>	<b>6.256</b>	<b>11.738</b>	<b>18.786</b>	<b>31.910</b>	<b>40.122</b>	<b>10.364</b>
<b>TOTAL DELIVERED</b>	<b>1,949.6</b>	<b>65.062</b>	<b>13.327</b>	<b>0.988</b>	<b>1.733</b>	<b>0.469</b>	<b>0.794</b>	<b>12.188</b>	<b>82.603</b>	<b>110.628</b>	<b>133.851</b>	<b>143.481</b>	<b>129.574</b>	<b>75.463</b>
<b>ANNUAL (AF)</b>														
<b>Water Sold</b>														
Golf Courses	405.0	960	971	968	969	969	969	936	985	1,013	1,047	1,033	1,044	1,064
Cemeteries	5.0	14	14	14	14	14	14	14	14	14	14	15	13	15
Parks	18.5	16	16	16	16	16	16	16	16	16	14	13	13	13
Schools	21.0	36	34	34	34	34	34	33	32	32	32	33	33	36
Commerical	167.6	304	301	301	304	305	299	287	300	301	309	309	310	322
Vineyards	564.0	285	265	266	266	265	264	270	279	270	281	308	310	342
Trucked Water	175.0	4	4	5	5	5	5	4	4	4	5	5	5	6
<b>Subtotal Sales</b>	<b>1,356.1</b>	<b>1,619</b>	<b>1,605</b>	<b>1,603</b>	<b>1,609</b>	<b>1,607</b>	<b>1,600</b>	<b>1,559</b>	<b>1,630</b>	<b>1,650</b>	<b>1,702</b>	<b>1,717</b>	<b>1,728</b>	<b>1,797</b>
<b>District Use</b>														
Jameson	330.0	163	163	163	163	163	163	163	163	158	164	183	182	143
Somky	213.0	222	222	222	222	222	222	222	241	268	254	230	222	223
Fagundes/Airport	50.5	-	-	-	-	-	-	-	-	-	-	-	-	-
<b>Subtotal District</b>	<b>593.5</b>	<b>385</b>	<b>385</b>	<b>385</b>	<b>385</b>	<b>385</b>	<b>385</b>	<b>385</b>	<b>404</b>	<b>427</b>	<b>419</b>	<b>413</b>	<b>404</b>	<b>366</b>
<b>TOTAL DELIVERED</b>	<b>1,949.6</b>	<b>2,004</b>	<b>1,990</b>	<b>1,988</b>	<b>1,994</b>	<b>1,992</b>	<b>1,985</b>	<b>1,945</b>	<b>2,034</b>	<b>2,077</b>	<b>2,121</b>	<b>2,130</b>	<b>2,132</b>	<b>2,164</b>

# **BIOSOLIDS HANDLING - MONTHLY**

<b>Site</b>	<b>Oct-16</b>	<b>Nov-16</b>	<b>Dec-16</b>	<b>Jan-17</b>	<b>Feb-17</b>	<b>Mar-17</b>	<b>Apr-17</b>	<b>May-17</b>	<b>Jun-17</b>	<b>Jul-17</b>	<b>Aug-17</b>	<b>Sep-17</b>	<b>Oct-17</b>
<u>Land Applied by NSD</u>													
Somky													
Airport/Fagundes													
Jameson Canyon	97	35	-	-	-	-	-	-	370	442	153	184	65
Subtotal by NSD	97	35	-	-	-	-	-	-	370	442	153	184	65
<u>Land Applied by Contractor</u>													
Somky													
Airport/Fagundes													
Jameson Canyon													
Subtotal by Contractor	-	-	-	-	-	-	-	-	-	-	-	-	-
<b>Total Land Applied</b>	<b>97</b>	<b>35</b>	<b>-</b>	<b>-</b>	<b>-</b>	<b>-</b>	<b>-</b>	<b>-</b>	<b>370</b>	<b>442</b>	<b>153</b>	<b>184</b>	<b>65</b>
<b>Off Site (Contractor)</b>													
<b>Total (tons)</b>	<b>97</b>	<b>35</b>	<b>-</b>	<b>-</b>	<b>-</b>	<b>-</b>	<b>-</b>	<b>-</b>	<b>370</b>	<b>442</b>	<b>153</b>	<b>184</b>	<b>65</b>



# COLLECTION SYSTEM MAINTENANCE - MONTHLY

CATEGORY	Oct-16	Nov-16	Dec-16	Jan-17	Feb-17	Mar-17	Apr-17	May-17	Jun-17	Jul-17	Aug-17	Sep-17	Oct-17
<b><u>Plugups</u></b>													
<b>Total Calls</b>	56	68	84	75	51	61	39	37	44	43	36	42	54
Business Hours	34	38	54	49	30	43	25	21	25	25	27	26	33
After Hours	22	30	30	26	21	18	14	16	19	18	9	16	21
District's	12	27	28	27	15	21	10	10	12	16	10	17	25
Property Owner's	44	41	56	48	36	40	29	27	32	27	26	25	29
Plugged Main Lines	1	2	2	3									
Run Lateral w/Eel	83	94	65	113	110	215	116	188	85	139	191	87	103
<b><u>Cleaning (feet of sewer)</u></b>													
Vactor #1	40,711	32,046	12,220	31,694	30,016	52,800	10,888	56,860	35,077	18,053	17,179	38,849	7,417
Vactor #2	14,730	1,512	23,277	18,222	18,062	34,405	53,959	7,819	44,357	41,749	58,712	35,140	50,621
Hydro Rodder													
<b>Total (feet)</b>	<b>55,442</b>	<b>33,557</b>	<b>35,497</b>	<b>49,915</b>	<b>48,077</b>	<b>87,205</b>	<b>64,846</b>	<b>64,679</b>	<b>79,433</b>	<b>59,802</b>	<b>75,891</b>	<b>73,989</b>	<b>58,038</b>
<b><u>Cleaning Days</u></b>													
Vactor #1	13	15	7	9	11	14	5	16	12	8	8	14	3
Vactor #2	4	1	8	7	7	11	17	4	16	13	23	11	18
Hydro Rodder													
<b><u>Feet/day</u></b>													
Vactor #1	3,150	2,150	1,750	3,500	2,750	3,750	2,200	3,550	2,900	2,250	2,150	2,750	2,450
Vactor #2	3,700	1,500	2,900	2,600	2,600	3,150	3,150	1,950	2,750	3,200	2,550	3,200	2,800
Hydro Rodder													
<b><u>Video Inspections</u></b>													
Mains (feet)	10,131	6,826	13,141	5,981	6,398	17,209	15,580	25,066	24,881	15,731	15,789		
Laterals (each)	174	182	191	203	175	324	249	251	205	265	246	170	184
<b><u>Construction (each)</u></b>													
Cleanouts	8	10	6	4	10	16	4	16	7	31	17	7	4
Laterals	10	5		1		4	3	4	15		9	1	1
Mains	3												
Manholes	1					1							
Other								50			2		57
<b><u>USA Markings</u></b>													
Regular (w/in 2 days)	215	214	160	151	186	254	305	297	258	215	264	233	252
Emergency (w/in 2 hours)	6	4	18	7	7	13	8	3	6	5	3	7	33

## WASTEWATER PLANT OPERATIONS DATA - MONTHLY

CATEGORY	Units	Oct-16	Nov-16	Dec-16	Jan-17	Feb-17	Mar-17	Apr-17	May-17	Jun-17	Jul-17	Aug-17	Sep-17	Oct-17
<b>FLOWES</b>		<b>31</b>	<b>30</b>	<b>31</b>	<b>31</b>	<b>28</b>	<b>31</b>	<b>30</b>	<b>31</b>	<b>30</b>	<b>31</b>	<b>31</b>	<b>30</b>	<b>31</b>
<b>Influent</b>	<b>MG</b>	<b>212.3</b>	<b>226.4</b>	<b>346.3</b>	<b>693.3</b>	<b>634.5</b>	<b>394.1</b>	<b>353.8</b>	<b>234.9</b>	<b>206.4</b>	<b>201.5</b>	<b>199.7</b>	<b>191.6</b>	<b>183.0</b>
<b>Average Day</b>	<b>MGD</b>	<b>6.8</b>	<b>7.5</b>	<b>11.2</b>	<b>22.4</b>	<b>22.7</b>	<b>12.7</b>	<b>11.8</b>	<b>7.6</b>	<b>6.9</b>	<b>6.5</b>	<b>6.4</b>	<b>6.4</b>	<b>5.9</b>
Maximum Day	Date	28-Oct	20-Nov	16-Dec	10-Jan	7-Feb	23-Mar	9-Apr	1-May	11-Jun	4-Jul	21-Aug	18-Sep	
Maximum Day Flow	MG	12.7	10.9	26.7	45.8	45.7	23.3	23.4	8.5	7.2	6.8	6.7	6.7	
Minimum Day	Date	11-Oct	8-Nov	7-Dec	1-Jan	1-Feb	20-Mar	30-Apr	24-May	30-Jun	31-Jul	30-Aug	4-Sep	1-Oct
Minimum Day Flow	MG	5.7	6.2	6.4	8.3	11.2	8.9	8.6	7.1	6.6	6.4	6.3	6.2	6.4
<b>Effluent</b>	<b>MG</b>	<b>83.5</b>	<b>442.0</b>	<b>369.9</b>	<b>529.2</b>	<b>718.6</b>	<b>730.8</b>	<b>480.3</b>	<b>98.9</b>	<b>117.1</b>	<b>146.3</b>	<b>158.0</b>	<b>142.9</b>	<b>80.0</b>
River Discharge	MG		426.1	357.6	529.2	718.6	725.8	463.4	-	-	-	-	-	-
Recycled Flow	MG	83.5	16.0	12.2	-	-	5.0	16.8	98.9	123.3	134.0	158.0	142.9	73.0
<b>BIOSOLIDS</b>	<b>Tons</b>	<b>499</b>	<b>591</b>	<b>658</b>	<b>439</b>	<b>355</b>	<b>488</b>	<b>568</b>	<b>507</b>	<b>639</b>	<b>521</b>	<b>952</b>	<b>703</b>	<b>612</b>
Wet Tons Generated from Pond	Tons													
Wet Tons Generated from Plant	Tons	499	591	658	439	355	488	568	507	639	521	952	703	612
Wet Tons Hauled Offsite	Tons													
<b>POLYMER USE</b>	<b>Gallons</b>	<b>11,710</b>	<b>9,676</b>	<b>7,306</b>	<b>3,670</b>	<b>2,394</b>	<b>1,979</b>	<b>4,644</b>	<b>6,112</b>	<b>9,760</b>	<b>4,352</b>	<b>1,987</b>	<b>3,927</b>	<b>3,051</b>
Pond Pre-Flocculators	Gallons	4,594	6,988	3,966	2,003	-	-	2,676	-	-	-	-	-	-
Flocculator Polymer 1	Gallons													
Flocculator Polymer 2	Gallons	110	1,150	913	1,148	1,927	1,325	720	-	-	-	-	115	-
Filter Polymer 1	Gallons	6,282	766	1,697	-		47	746	5,662	8,984	3,739	914	3,077	2,358
Filter Polymer 2	Gallons													
Belt Presses	Gallons	724	772	730	519	467	607	502	450	776	613	1,073	735	693
<b>ENERGY</b>														
<b>Total Electricity Used</b>	<b>MWH</b>	<b>668</b>	<b>657</b>	<b>630</b>	<b>709</b>	<b>683</b>	<b>749</b>	<b>759</b>	<b>713</b>	<b>739</b>	<b>807</b>	<b>849</b>	<b>870</b>	<b>747</b>
Purchased from PGE	MWH	436	655	630	709	683	583	378	330	338	412	469	476	367
Produced from Co-Gen	MWH	233	3	-	-	-	166	245	213	225	203	253	248	251
Percent Produced	%	35%	0%				22%	32%	30%	30%	25%	30%	29%	34%
Purchased from Solar	MWH	-	-	-	-	-	14	159	202	203	213	172	153	140
Percent Produced							2%	21%	28%	27%	26%	20%	18%	19%
Purchased Natural Gas	Therms	745	36	4	-	13	205	50	21	51	858	56	60	19
Methane Flared Off	KSCF	67	4,051	4,407	3,225	2,722	986	56	15	225	127	156	164	5
<b>Stand By Calls</b>	<b>#</b>	<b>41</b>	<b>52</b>	<b>50</b>	<b>24</b>	<b>41</b>	<b>63</b>	<b>42</b>	<b>55</b>	<b>86</b>	<b>48</b>	<b>44</b>	<b>78</b>	<b>36</b>

# **WASTEWATER PLANT MAINTENANCE and LABORATORY DATA - MONTHLY**

<b>CATEGORY</b>	<b>Oct-16</b>	<b>Nov-16</b>	<b>Dec-16</b>	<b>Jan-17</b>	<b>Feb-17</b>	<b>Mar-17</b>	<b>Apr-17</b>	<b>May-17</b>	<b>Jun-17</b>	<b>Jul-17</b>	<b>Aug-17</b>	<b>Sep-17</b>	<b>Oct-17</b>
<b><u>Scheduled</u></b>													
Old	50	57	48	75	49	43	40	75	41	37	28	17	33
New	91	88	80	86	61	106	91	87	90	72	78	78	86
Completed	84	97	53	112	67	109	56	121	94	81	89	62	85
<b>New Balance</b>	<b>57</b>	<b>48</b>	<b>75</b>	<b>49</b>	<b>43</b>	<b>40</b>	<b>75</b>	<b>41</b>	<b>37</b>	<b>28</b>	<b>17</b>	<b>33</b>	<b>34</b>
<b><u>Unscheduled</u></b>													
Old	62	56	57	57	49	48	48	61	46	47	45	38	43
New	25	33	31	30	27	21	24	24	56	29	40	32	21
Completed	31	32	31	38	28	21	11	39	55	31	47	27	32
<b>New Balance</b>	<b>56</b>	<b>57</b>	<b>57</b>	<b>49</b>	<b>48</b>	<b>48</b>	<b>61</b>	<b>46</b>	<b>47</b>	<b>45</b>	<b>38</b>	<b>43</b>	<b>32</b>
<b><u>Total Work Orders</u></b>													
Old	112	113	105	132	98	91	88	136	87	84	73	55	76
New	116	121	111	116	88	127	115	111	146	101	118	110	107
Completed	115	129	84	151	95	130	67	161	149	112	132	89	117
<b>New Balance</b>	<b>113</b>	<b>105</b>	<b>132</b>	<b>98</b>	<b>91</b>	<b>88</b>	<b>136</b>	<b>87</b>	<b>84</b>	<b>73</b>	<b>55</b>	<b>76</b>	<b>66</b>
<b><u>LAB ANALYSES</u></b>													
<b>Sample Type</b>													
Regulatory	204	168	175	192	214	210	218	177	230	173	193	194	156
Process Control	766	1,315	1,209	1,189	1,051	1,370	1,167	820	1,107	1,024	1,104	1,091	1,137
Special Request	19	39	40	3	1	1	-	6	200	-	-	7	8
Quality Control/Assurance	50	302	299	303	272	301	497	523	574	464	549	428	420
<b>TOTAL</b>	<b>1,039</b>	<b>1,824</b>	<b>1,723</b>	<b>1,687</b>	<b>1,538</b>	<b>1,882</b>	<b>1,882</b>	<b>1,526</b>	<b>2,111</b>	<b>1,661</b>	<b>1,846</b>	<b>1,720</b>	<b>1,721</b>

**Summary of NSD Capital Project Status  
through 10-31-17**

Proj #	Description	FY 17-18 Budget	FY 16-17 Carryovers	Adj.	Final FY 17-18 Budget	Encumbrance	Costs Paid to Date	Budget Remaining	% Budget Expended
	<b><u>COLLECTION SYSTEM</u></b>								
13701	Main Line Sewer Rehab	91,800			91,800	-	-	91,800	-
13702	Manhole Raising/Rehab	206,000			206,000	145,500	16,174	44,326	8%
13703	Lateral Replacement/Rehab	74,500			74,500	580	32,869	41,051	44%
13704	Cleanouts Installation/Rehab	90,000			90,000	4,029	27,669	58,301	31%
13705	I&I Reduction Program	207,000	29,000		236,000	6,781	15,729	213,490	7%
14703	Browns Valley Rd & First St	9,237,000	3,004,750		12,241,750	163,118	88,629	11,990,003	1%
17702	Upper Lateral Rehab - Basin L (Pilot #2)	155,300		(20,000)	135,300	-	23,585	111,715	17%
17704	Infltrtn Rehab - SSMH/PL (CI-)	-	73,900		73,900	-	-	73,900	-
17705	Soscol Ave (8th to Oil Co Rd)	950,000	415,450		1,365,450	1,343,972	16,427	5,051	1%
17707	66-inch Trunk CCTV Inspection	-	149,350		149,350	48,704	22,593	78,053	15%
17708	Basin G - I&I Reduction #1	2,942,000	1,504,100		4,446,100	2,702,813	1,292,866	450,421	29%
17734	Homewood/Westwood I/I Reduction	-	60,300		60,300	-	530	59,770	1%
18701	I&I Smoke Testing	100,000			100,000	-	-	100,000	-
18702	Collection System Asset Management Software	350,000			350,000	-	-	350,000	-
18703	Upper Lateral Rehab - Basin L (Pilot) #3	5,000			5,000	-	-	5,000	-
18704	Manhole Rehab - Nipak - Basin H	284,600			284,600	158,684	3,419	122,497	1%
18705	Sewer System Inflow/Infiltration 2018	1,650,000		834,000	2,484,000	55,247	29,792	2,398,961	1%
18706	Sewer System Inflow/Infiltration 2019	20,000			20,000	-	-	20,000	-
						-			
	<b><u>COLLECTION SYSTEM - EQUIPMENT</u></b>					-			
18707	Locatable Mini-Camera #2 Replacement	11,100			11,100	-	8,836	2,265	80%
18708	Manhole - Smart Covers (4)	25,000			25,000	-	-	25,000	-
18709	Vehicle 504 - TV Truck	270,000			270,000	-	187,154	82,846	69%
18735	Permaliner Picote	-		20,000	20,000	15,625	-	4,375	-
	<b><u>LIFT STATIONS</u></b>								
17711	West Napa PS - Rehab	-	1,746,365		1,746,365	62,870	595	1,682,900	0%
	<b><u>TREATMENT</u></b>								
13745	Pond 1 Dredge	400,000			400,000	27,771	-	372,229	-
16708	Algae to Digester/Thermal Stdy	-	46,800		46,800	22,913	138	23,749	0%
	<b><u>TREATMENT - EQUIPMENT</u></b>								
13735	Dual Fuel Boiler Burner	155,300			155,300	-	-	155,300	-

**Summary of NSD Capital Project Status  
through 10-31-17**

Proj #	Description	FY 17-18 Budget	FY 16-17 Carryovers	Adj.	Final FY 17-18 Budget	Encumbrance	Costs Paid to Date	Budget Remaining	% Budget Expended
13741	Secondary PS Pump Rebuild (3)	38,800			38,800	32,296	-	6,504	-
13743	Risidual Analyzers (Deox) Replacements	5,000	3,500	40,000	48,500	-	1,903	46,597	4%
15711	Rotork Actuator Replacement	-	7,600		7,600	-	-	7,600	-
15713	Aeration Basin Instrmntn/Ctrl	-	10,000		10,000	-	290	9,710	3%
16714	High Voltage System Repairs	-	66,500	(66,500)	-	-	-	-	-
17713	Secondary PS VFD Rplcmnt (3)	55,400	51,150	(106,550)	-	-	-	-	-
17714	WWTP MP - 3W Sys Imprvmnts	440,000	36,100	(476,100)	-	-	-	-	-
17715	Turbidimeters (7) Tertiary Rplcmnts	20,000	15,400		35,400	14,041	19,405	1,954	55%
17718	Energy Audit - LED Pole/Arm Mounted Fixtures	-	44,750	(15,000)	29,750	4,297	267	25,186	1%
17725	Main - Sump #3 Modification	-	10,000		10,000	-	-	10,000	-
18710	3W Pipeline - Soscol PS to Plant - Rehab	33,300			33,300	-	-	33,300	-
18711	3W Strainer	83,200			83,200	-	-	83,200	-
18712	3W VFD	62,100		(62,100)	-	-	-	-	-
18713	Primary Influent Pipe - East Gallery	250,000		(250,000)	-	-	-	-	-
18714	Distillation System	6,000			6,000	-	-	6,000	-
18715	Muffle Furnace - Replacement	15,000		(10,000)	5,000	-	-	5,000	-
18716	Rotork Actuator Replacement	91,800			91,800	-	-	91,800	-
18717	Septage Card Reader Replacement	21,400			21,400	-	-	21,400	-
18718	Secondary Clarifier Mech/Struct Rehabilitation	50,000			50,000	50,000	-	-	-
18719	Filter Flow Control - Rotork Valves	46,600			46,600	-	-	46,600	-
18720	Neuros Blowers Rebuild	62,100			62,100	-	-	62,100	-
18721	CCB #3 Effluent Gate	5,000		(5,000)	-	-	-	-	-
18722	FOG Station Water Heater	5,000			5,000	-	-	5,000	-
18723	Pond 4 PS - Repair Leak	24,000		(24,000)	-	-	-	-	-
18724	Filter 1-4 Air Valve	10,000		(10,000)	-	-	-	-	-
18725	Belt Press Hydraulic Actuator Replace	20,000			20,000	-	-	20,000	-
18734	Boat Motor Vehicle 302	-		10,000	10,000	-	7,407	2,593	74%
	<b>TREATMENT - STRUCTURES</b>								
17726	Headworks Equipment Rehab/Replacment	250,000	42,100		292,100	261,808	520	29,772	0%
18726	Building HVAC and Lab Ventilation	500,000		(500,000)	-	-	-	-	-
18727	Earthquake - Structural Repair	300,000			300,000	-	838	299,162	0%
18728	Roof Rplcmnt - Solids Handling/Digester Tower	232,900			232,900	-	-	232,900	-
18736	Treatment Plant Project 2018	-		1,500,250	1,500,250	69,785	18,185	1,412,280	1%

**Summary of NSD Capital Project Status  
through 10-31-17**

<b>Proj #</b>	<b>Description</b>	<b>FY 17-18 Budget</b>	<b>FY 16-17 Carryovers</b>	<b>Adj.</b>	<b>Final FY 17-18 Budget</b>	<b>Encumbrance</b>	<b>Costs Paid to Date</b>	<b>Budget Remaining</b>	<b>% Budget Expended</b>
	<b><u>SCADA</u></b>								
18729	SCADA MP Project #1 - Network Monitoring	50,000			50,000	-	-	50,000	-
	<b><u>RECYCLING - DISTRICT</u></b>								
16716	Line Recycled Water Reservoir	1,800,000	169,550		1,969,550	79,819	28,944	1,860,787	1%
18730	Jameson 24" Flow Meter Rehab	6,200			6,200	-	-	6,200	-
18731	Coombsville Truck Fill Station	100,000			100,000	23,057	206	76,737	0%
	<b><u>RECYCLING - EXPANSION</u></b>								
13727	North Bay Wate Reuse Project	150,000			150,000	-	80,485	69,515	54%
14726	MST RW Pipeline Construction	-	5,000		5,000	-	292	4,708	6%
16722	MST RW Pipeline Extension	2,800,000	(158,465)		2,641,535	898,551	1,245,442	497,542	47%
	<b><u>OTHER</u></b>								
13729	Development Technical Support	239,900			239,900	-	93,197	146,703	39%
18732	Box Culvert - Fugundes Emergency Access	5,000			5,000	-	-	5,000	-
18733	GPS Handheld	15,000			15,000	-	7,958	7,042	53%
<b>GRAND TOTAL ALL PROJECTS</b>		<b>\$25,018,300</b>	<b>\$7,333,200</b>	<b>\$859,000</b>	<b>\$33,210,500</b>	<b>\$6,192,262</b>	<b>\$3,272,343</b>	<b>\$23,745,895</b>	<b>10%</b>