



Napa Sanitation District

General Manager's Report

for

August, 2017

Contents:

- a. Transmittal Memo
- b. Budget Status and Cash Summary
- c. Key Information Graphs – Fund Balances, Treatment Plant and Collection
- d. Fund Balances
- e. Development Processing
- f. Construction Inspection
- g. Pollution Prevention
- h. Recycled Water Deliveries
- i. Biosolids Handling
- j. Collection System Maintenance
- k. Treatment Plant Operations
- l. Treatment Plant Maintenance & Laboratory
- m. Capital Project Expenditure Summary



NAPA SANITATION DISTRICT

General Manager's Report

Dedicated to Preserving the Napa River for Generations to Come

DATE: November 1, 2017

FROM: Timothy B. Healy, General Manager

SUBJECT: General Manager's Report for August, 2017

REGULATORY COMPLIANCE:

Collection System Compliance:	0 Category 1 SSO's, 0 Category 2 SSO's, and 5 Category 3 SSO's
NPDES Permit (WWTP) Compliance:	Full compliance with all regulations
Air Quality Compliance:	Full compliance with all regulations
Recycled Water Compliance:	Full compliance with all regulations
Biosolids Compliance:	Full compliance with all regulations
Significant Comments:	None

FISCAL STATUS:

Period Covered:	July 1, 2016 – August 31, 2017
Percent Fiscal Year:	16.7%
Operating Expenditures to date:	23.3%
Historical Expenditures to date:	26.4%
Significant Comments:	None

PERSONNEL:

Significant events for the month of August, 2017 in the Human Resources Department:

New Hires:	None
Separations:	None
Promotions:	None
Recruitment Activities:	Continued recruitment for Operator-in-Training/Operator I, Engineering position and Collection System Worker-in-Training positions.
Injuries:	Injury to hand, Jaden Smith – no lost time

Summaries of Operational Highlights are on following pages.

COLLECTIONS:

Significant events for the month of August 2017 in Collection System Maintenance include:

- NapaSan had 0 Category 1 Sanitary Sewer Overflows (SSO's), 0 Category 2 SSO's and 5 Category 3 SSO's during the month. (A Category 1 is defined as an SSO that reached a drainage channel and/or surface water or; an SSO that reached a storm drain pipe that was not fully recovered and returned to the sanitary sewer system. A Category 2 is defined as an SSO that is equal to or greater than 1,000 gallons that did not reach a surface water. A Category 3 is defined as an SSO that is less than 1,000 gallons that did not reach a surface water. These are usually minor overflows of less than 10 gallons from cleanouts on NapaSan laterals that can be cleaned up by the crews.)
- The repair crew installed 10 cleanouts, repaired 3 cleanouts and repaired or replaced 8 lower laterals. Additionally, the service response/programs crew completed 117 work orders in support of the grease and odor control program, responded to 37 customer requests for service (10 were NapaSan problem) and closed out 266 mark and locate request tickets.
- The preventative maintenance crews ran work orders on 189 laterals, cleaned approximately 75,891 feet of main line and CCTV inspected approximately 15,788 feet of main line and 20 laterals.

TREATMENT PLANT:

Significant events for the month of August 2017 in the Treatment Plant Department:

Plant Operations:

- For August 2017, the plant's influent flow was 199.7 MG as compared to last year flow for August 2016 of 186.6 MG
- There was no flow to the Napa River for August 2017
- The production of recycle quality occurred for 30 days during August 2017 with a total distributed flow of 147.86 MG.
- There was .0" rain fall for August 2017 as compared to 0" rain fall for August 2016.
- Pond 4 end of the month recorded level reading was 27.95" as compared to July 2016 of 44.79". Total remaining pond capacity for August 2017 was 56% as compared to August 2016 remaining capacity of 40.3%.

Power Consumption and Production:

- This August power consumption purchased from PG&E was 437 MWH in comparison to July 2016 purchase of 546 MWH.
- Cogeneration unit ran 733 of 744 hours for the month – 98.52% uptime, averaging 328.36 Kw.
- Solar generation in August was 172 MWH, compared to 213 MWH in July.

Maintenance:

Significant events for the month of August, 2017:

Process Maintenance

- Cogeneration unit monthly emission test - in compliance with BAAQMD permit.
- Cogen Service;
 - Changed oil, filter socks and air pre-filter
 - Installed new bowl kit on oil gallons counter flow meter
- Changed media in digester gas filtration unit
- Installed new hour meters for FOG mix pumps
- Replaced seal water 3-way valve on primary pump 301
- Ferric pump #102 – rebuilt pump head and over pressure valve
- Installed new pulleys and belts on grit blowers
- Replaced RTD module on Neuros blower #3
- AB #4 compartment 5/replaced level transducer
- Replaced VFD for RAS Pump #1/AB basin #4

Projects

- Up-graded Septage PH meter and probe from analog to digital
- Up-graded P-4 polymer pump #2 system from gear unit to peristaltic

Standby Power

- Plant generators operational testing only
- Riverpark, West Napa, Stonecrest operational testing only

Influent Pumps

- Pumps are all operational

Laboratory:

- Monthly composite **Influent (INF-001)** monitoring was conducted on August 7, 2017. Monthly Cyanide monitoring was conducted on August 7. Sample analysis indicated no unusual results and all parameters were within local limits except for the following:
 - **Sodium:** 91 mg/L. Local Limit: 90 mg/L
- Monthly **Recycle Effluent (REC-001)** monitoring was conducted on August 7, 2017. Sample analysis indicated no unusual results and all parameters were within the state's Water Reuse Requirements and NapaSan's Recycled Water limits.

- Quarterly **Biosolids (BIO-001)** monitoring was conducted between August 15 and August 17, 2017. Sample analysis indicated no unusual results and was within EPA 503 Table 1 & Table 3 ceiling concentration limits.

RECYCLING:

Significant events in the Recycling Department for August 2017 include:

- Staff approved the conversion of five commercial landscaped facilities operated by Westcore Properties in the Napa Airport Centre area. The projected summer demand is four acre feet.
- Staff approved the connection of two recycled water customers in the MST area and one customer in the LCWD area.
- Recycled water delivered for the month of August 2017 (111.563 million gallons), as compared to August 2016 (106.821 million gallons) is higher due to vineyard demand. Delivered recycled water volume represents the sum of all use site flow meter consumption values.
- Staff continued land application of biosolids at the Jameson Reuse Site.

POLLUTION PREVENTION:

Significant events in the Pollution Prevention Department for August 2017 include:

- One facility tour was given in August.
- The Napa Safe Medication Collection Program is temporarily on hold while we make sure we are in compliance with the new California Board of Pharmacy regulations. The total amount of unneeded medications collected since program inception in September 2010 is 20,802.2 pounds.
- NapaSan issued 6 Toilet Rebates for \$600.
- NapaSan issued 1 ESME Washer Rebates at \$12.50.

ENGINEERING / CAPITAL PROJECTS / DEVELOPMENT:

Significant events occurring in the Engineering Department for August 2017 include:

- Consultant continued design of the West Napa Pump Station Rehabilitation Project.
- Consultant continued design of the Headworks Equipment Replacement Project.
- Staff held a pre-bid meeting and site visit for the Recycled Water Reservoir Improvements Project.
- Staff continued design of the 2018 Collection System Rehabilitation Project.
- Consultant continued design of the Browns Valley Trunk Project.

- Consultant continued work on the Buildability/Constructability review for the Browns Valley Trunk Project.
- Consultant and Staff continued work on Phase 1A of the Asset Management Program.
- Contractor continued construction of the MST Recycled Water Pipeline Expansion Project.
- Contractor continued construction of the Soscol/Sousa Trunk Rehabilitation Project.
- Contractor continued construction of the 2017 Collection System Rehabilitation Project.
- Contractor continued construction of Manhole Adjustment Project – Phase VI.
- Staff issued notice of award to contractor for the Basin H Manhole Rehabilitation Project.
- Contractor completed construction for the LED Pole/Arm Fixture Replacement project.
- Staff initiated construction of the Upper Lateral Basin L Pilot #2 Project.
- Staff opened bids for the Earthquake Repair Project.
- Staff conducted smoke testing on Walnut Street and Monroe Street to identify potential sources of inflow.
- Staff reviewed 46 sets of development plans and deemed 29 sets of plans complete. The approved plans consisted of four residential buildings, fourteen tenant improvements, three commercial buildings, one commercial lateral, one public lateral, one main extension, one industrial user, one demolition, and three recycled water laterals.

Budget Status & Cash Summary - July 1, 2017 - August 31, 2017 (16.7% of the year)

<i>Expenditures</i>	FY 17-18 Budget	Expenditures to date	Encumbrances	Committed to date	Remaining Balance	Percent Committed
<u>Operating</u>						
Salaries & Benefits	\$9,581,300	\$1,153,953	\$3,164	\$1,157,116	\$8,424,184	12.1%
Services & Supplies	5,814,350	727,053	1,163,892	1,890,944	3,923,406	32.5%
Taxes	28,650	-	-	-	28,650	0.0%
Debt Service	4,777,450	3,738,039	-	3,738,039	1,039,411 (1)	78.2%
Intrafund Transfers	8,900,000	-	-	-	8,900,000	0.0%
Total Operating:	\$29,101,750	\$5,619,045	\$1,167,055	\$6,786,100	\$22,315,650 (2)	23.3%
<u>Capital</u>						
Bldgs/Improvements & Equip	\$25,018,300	\$1,400,017	\$54,533	\$1,454,549	\$23,563,751 (3)	5.8%
Intrafund Transfers	3,630,000	389,553	-	389,553	3,240,447	10.7%
Total Capital :	\$28,648,300	\$1,789,569	\$54,533	\$1,844,102	\$26,804,198	6.4%
Grand Total Expenditures:	\$57,750,050	\$7,408,614	\$1,221,588	\$8,630,202	\$49,119,848	14.9%

<i>Revenues</i>	FY 17-18 Budget	Collected to date	Encumbrances	Received to Date	Uncollected Revenue	Percent Collected
<u>Operating</u>						
Use of Money/Property	\$896,000	\$181,481		\$181,481	\$714,519	20.3%
Intergovernmental	\$15,000	\$0		-	15,000	N/A
Charges for Services	27,429,100	554,040		554,040	26,875,060	2.0%
Miscellaneous Revenues	61,000	370,097		370,097	(309,097) (4)	606.7%
Donations/Contributions (Capital Labor)	-	141,186		141,186	(141,186) (5)	N/A
Total Operating:	\$28,401,100	\$1,246,803		\$1,246,803	\$27,154,297	4.4%
<u>Capital</u>						
Use of Money/Property	\$0	\$0		\$0	\$0	N/A
Capacity Charges	3,630,000	188,774		188,774	3,441,226	5.2%
Intergovernmental	4,076,000	1,354		1,354	4,074,646	0.0%
Bond/Loan Proceeds	10,137,000	-		-	10,137,000	0.0%
Sale of Assets	25,000	-		-	25,000	N/A
Miscellaneous Revenues	-	-		-	-	N/A
Intrafund Transfers	12,530,000	389,553		389,553	12,140,447	3.1%
Total Capital:	\$30,398,000	\$579,680		\$579,680	\$29,818,320	1.9%
Grand Total Revenue:	\$58,799,100	\$1,826,483		\$1,826,483	\$56,972,617	3.1%

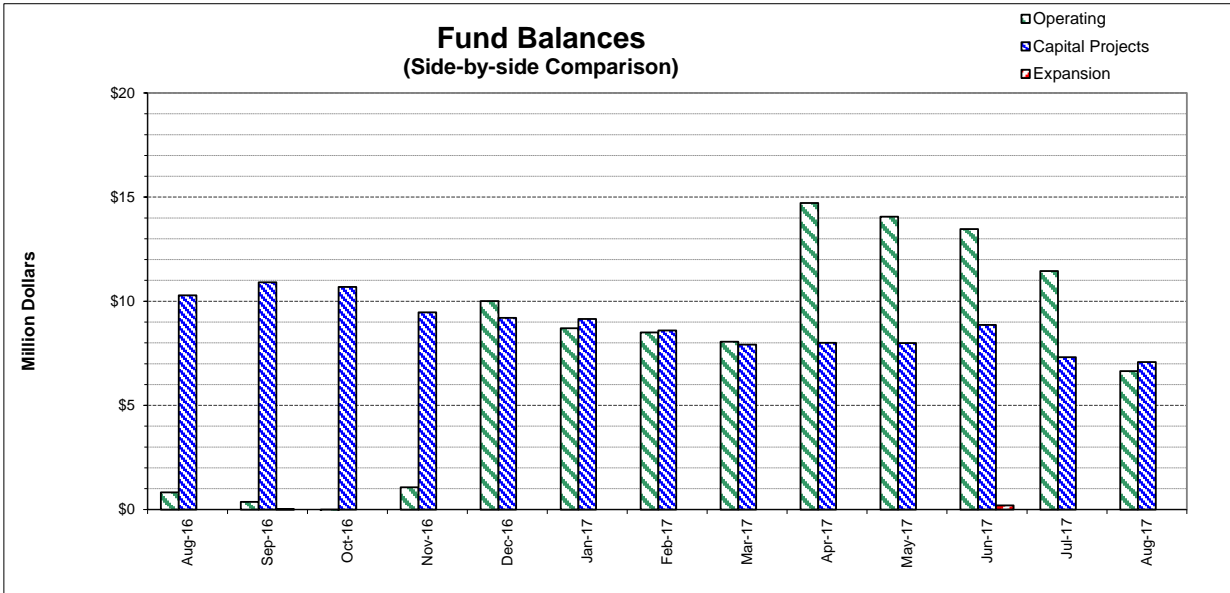
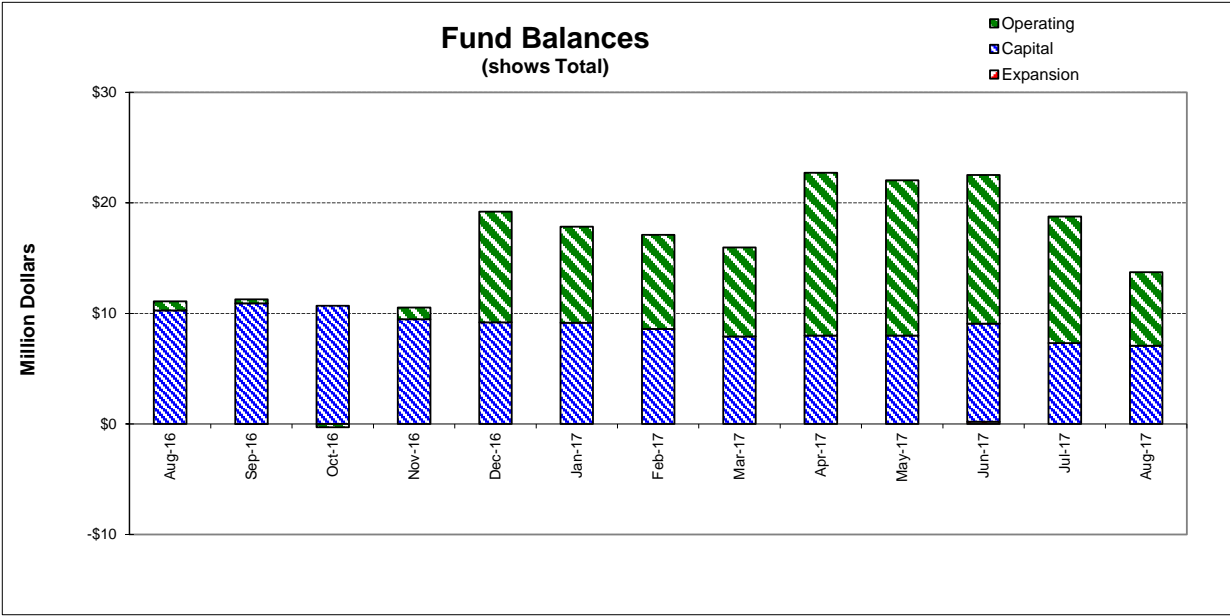
Cash on Hand as of 8/31/17 **\$13,728,143**

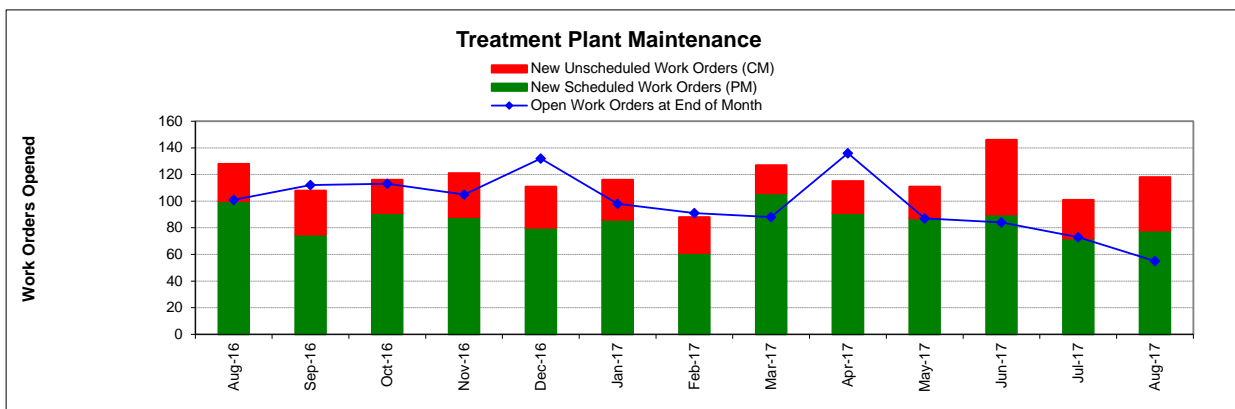
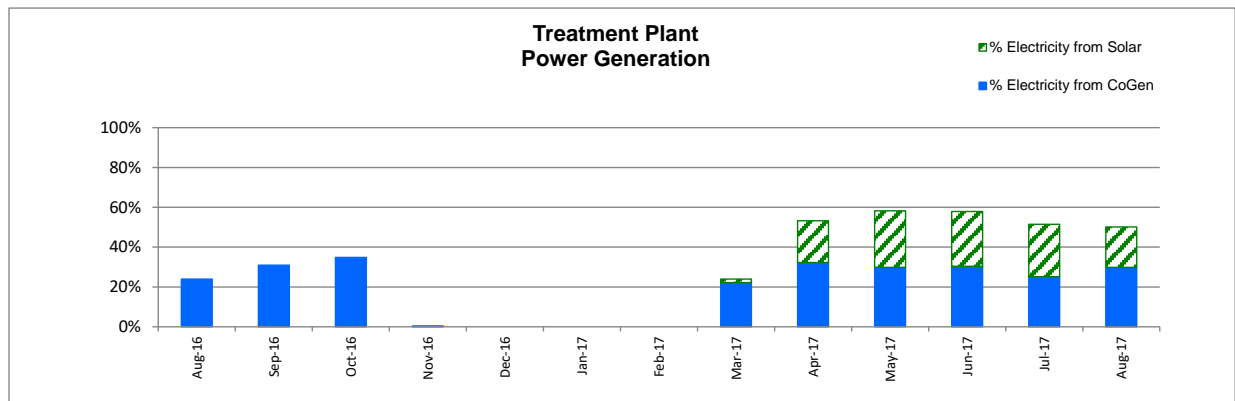
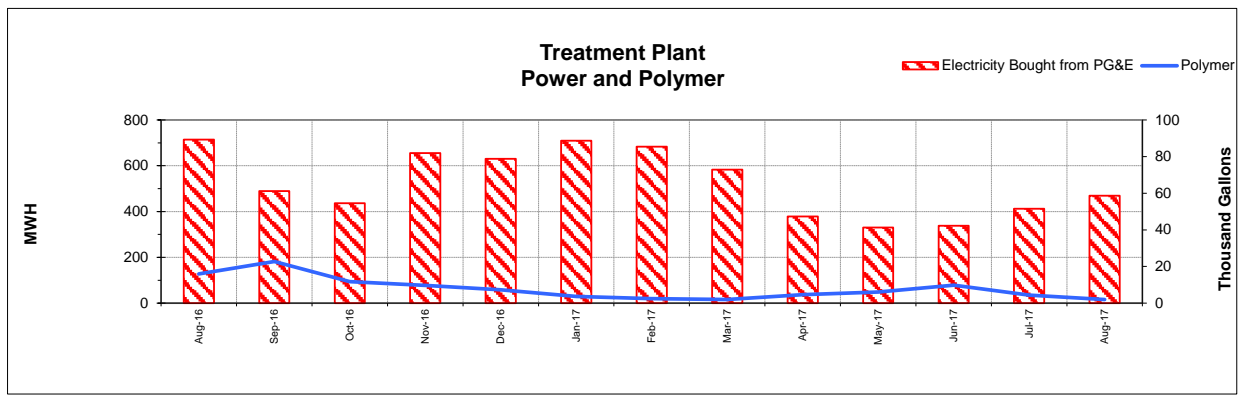
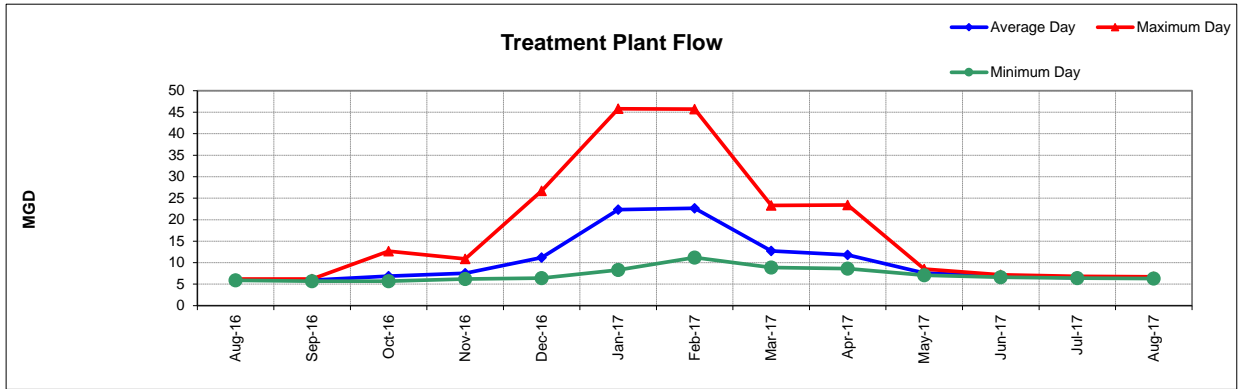
**excluding Debt Service restricted funds

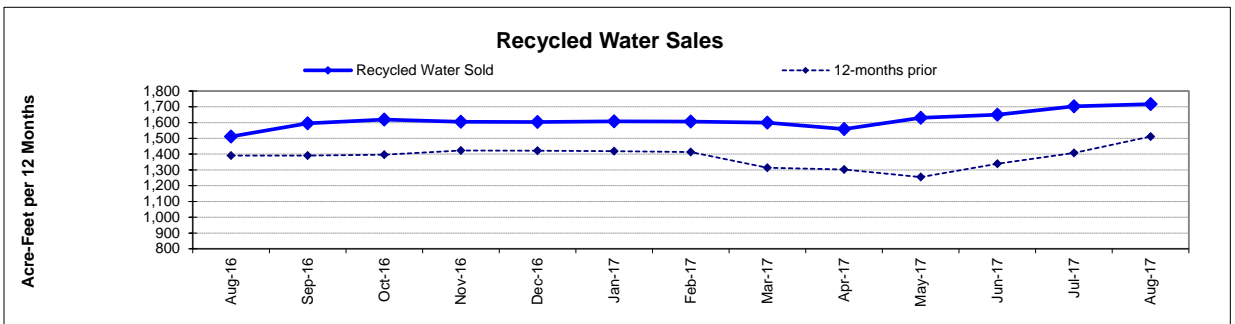
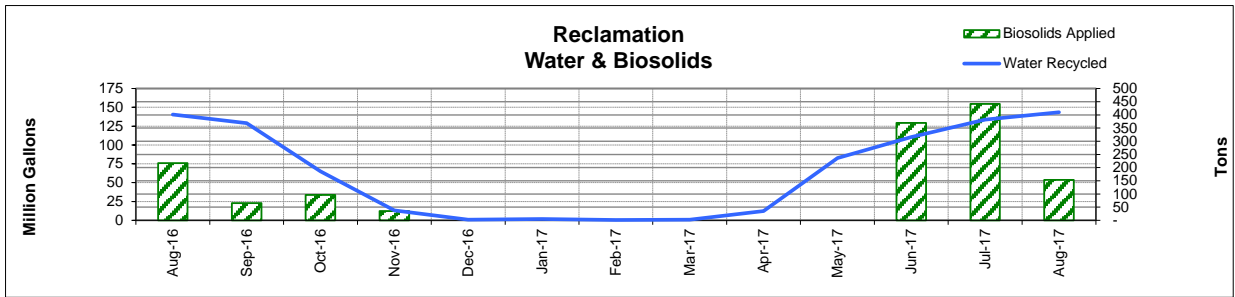
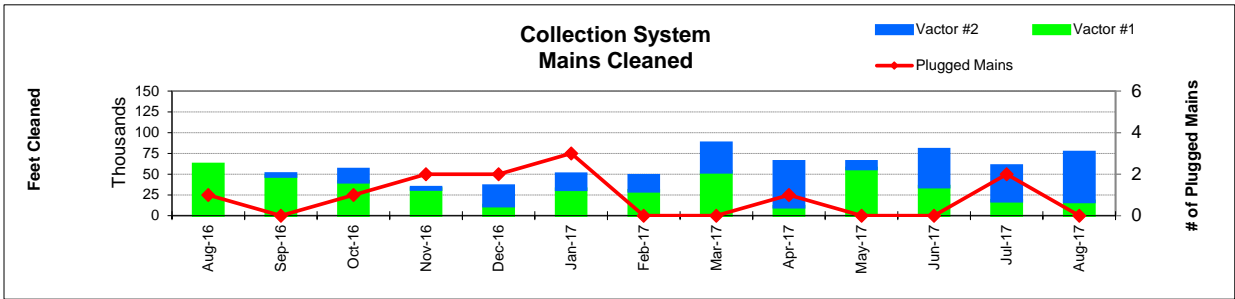
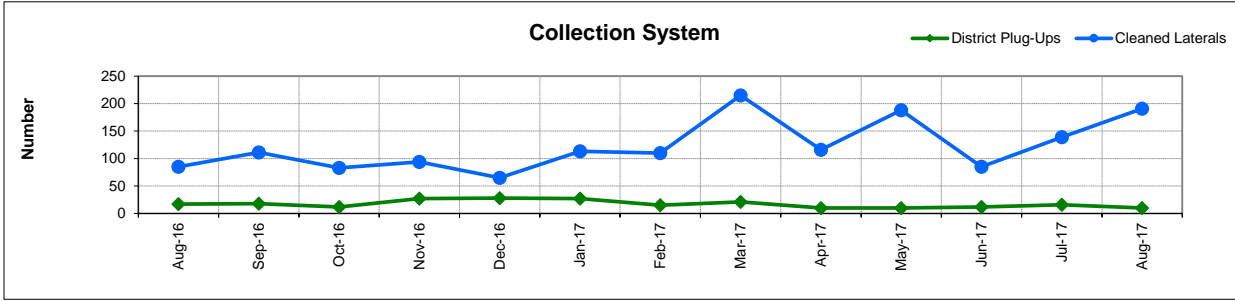
07/31/17 - Effective Rate of Return = 0.99%

Note: Effective Rate of Return for August was not available at the time of this report.

1. Series 2009B's and 2012A's principal/interest payments are made in Aug & Feb
2. Includes Debt Service and Intrafund Transfers; otherwise is 19.8%
3. See Capital Project Status report for details
4. Includes reimbursement from NBWRA from FY 16-17.
5. In-house Labor for Capital Projects (Contra acct for Salaries)







FUND BALANCES - MONTHLY

CATEGORY	Aug-16	Sep-16	Oct-16	Nov-16	Dec-16	Jan-17	Feb-17	Mar-17	Apr-17	May-17	Jun-17	Jul-17	Aug-17
<i>(Thousand Dollars)</i>													
7800	819	362	(293)	1,062	10,012	8,701	8,506	8,055	14,722	14,059	13,463	11,450	6,645
7850	-	-	-	-	-	-	-	-	-	-	-	-	-
Subtotal Operating	819	362	(293)	1,062	10,012	8,701	8,506	8,055	14,722	14,059	13,463	11,450	6,645
Capital Improvement Projects	10,284	10,912	10,685	9,470	9,204	9,154	8,598	7,921	8,001	7,995	8,867	7,312	7,083
Debt Proceeds	-	-	-	-	-	-	-	-	-	-	-	-	-
Subtotal Capital	10,284	10,912	10,685	9,470	9,204	9,154	8,598	7,921	8,001	7,995	8,867	7,312	7,083
Total Discretionary Funds	11,103	11,274	10,392	10,532	19,216	17,855	17,104	15,976	22,723	22,054	22,330	18,762	13,728
Expansion Fund (Restricted)	-	1	-	-	-	-	-	-	-	-	202	-	-
Total Restricted Funds	-	1	-	-	-	-	-	-	-	-	202	-	-
TOTAL ALL FUNDS	11,103	11,275	10,392	10,532	19,216	17,855	17,104	15,976	22,723	22,054	22,532	18,762	13,728

DEVELOPMENT WORKLOAD - MONTHLY

CATEGORY	Aug-16	Sep-16	Oct-16	Nov-16	Dec-16	Jan-17	Feb-17	Mar-17	Apr-17	May-17	Jun-17	Jul-17	Aug-17
<u>Phone Requests</u>													
Maps/Drawings	9	5	8	7	4	9	7	4	5	5	5	3	4
Lateral Permits	-	-	-	-	-	-	2	2	-	-	-	-	-
Policy Questions	11	7	3	8	6	6	10	6	4	10	19	11	6
Development Questions	126	56	61	48	47	45	60	63	62	91	95	51	71
Miscellaneous	15	7	4	6	4	8	6	6	8	8	10	11	3
TOTAL	161	75	76	69	61	68	85	81	79	114	129	76	84
<u>Counter Requests</u>													
Maps/Drawings	7	5	1	-	1	2	1	-	1	3	6	2	-
Lateral Permits	19	19	13	14	7	11	5	11	10	10	18	15	6
Policy Questions	2	2	2	1	-	3	2	1	-	5	2	5	2
Development Questions	30	17	10	8	4	9	13	5	15	29	21	8	14
Miscellaneous	6	4	2	1	2	3	1	-	1	5	6	2	2
TOTAL	64	47	28	24	14	28	22	17	27	52	53	32	24
<u>Initial Request (Referrals)</u>	22	10	7	21	23	17	11	25	17	22	20	10	11
<u>Connection Permits Issued</u>													
Residential Permits	1	1	21	-	-	-	1	3	1	1	12	1	4
Commercial Permits	1	2	6	4	3	-	1	3	1	4	2	2	5
Industrial Permits	-	-	-	-	-	-	-	-	-	-	-	-	-
TOTAL PERMITS	2	3	27	4	3	-	2	6	2	5	14	3	9
Residential Units	1	1	21	-	-	-	1	3	1	2	35	1	4
Commercial Units	1	146	14	4	3	-	3	-	1	4	7	2	6
TOTAL UNITS	2	147	35	4	3	-	4	3	2	6	42	3	10
<u>Annexations</u>													
Submitted	-	1	-	1	-	-	-	-	-	-	-	-	-
Acreage	-	1.10	-	27.11	-	-	-	-	-	-	-	-	-
<u>Plans Reviewed</u>													
<u>Subdivisions/Sites</u>													
First Submittal	8	4	3	5	2	10	2	4	11	6	8	10	5
Second Submittal	6	4	3	-	2	2	3	7	6	8	4	5	7
Third Submittal	1	7	-	1	3	2	1	5	1	2	8	4	2
<u>Building/Tenant Improvements</u>													
First Submittal	12	4	8	5	4	10	5	7	4	9	17	8	19
Second Submittal	4	9	3	4	4	5	2	5	4	4	5	9	6
Third Submittal	1	5	3	8	6	2	1	10	3	7	8	6	7
<u>Miscellaneous Plan Reviews</u>													
TOTAL PLANS REVIEWED	32	33	20	23	21	32	14	38	29	36	50	42	46

INSPECTION WORKLOAD - MONTHLY

CATEGORY	Aug-16	Sep-16	Oct-16	Nov-16	Dec-16	Jan-17	Feb-17	Mar-17	Apr-17	May-17	Jun-17	Jul-17	Aug-17
<u>CONSTRUCTION</u>													
Locating Sewers	-	-	-	-	-	-	-	-	-	-	-	-	-
Permit Processing	-	-	-	-	-	-	-	-	-	-	1	-	-
Preconstruction Meetings	9	-	5	6	5	9	6	6	4	1	2	3	2
Inspections - Mains	1	-	-	10	1	-	-	6	1	-	4	-	-
Inspections - Manholes	-	-	81	27	89	46	16	15	61	1	9	3	3
Inspections - Laterals	20	9	7	37	11	24	17	50	14	3	8	11	8
Inspections - Cleanouts	25	4	29	71	20	42	38	74	25	-	2	4	3
Inspections - Review Video	3	-	2	2	4	1	-	-	-	2	-	3	-
Demo - Septic Tanks	-	-	-	-	-	-	-	-	-	-	-	-	-
Demo - Buildings	1	-	-	-	-	2	-	1	2	-	-	-	-
Update Record Drawings	-	-	-	-	-	-	-	-	-	-	-	-	-
TOTAL	59	13	124	153	130	124	77	152	107	7	26	24	16
<u>MISCELLANEOUS</u>													
Meter Readings	9	-	9	-	18	100	-	13	24	-	-	-	-
Washdown Facility Inspections	-	-	-	19	-	-	-	-	-	-	-	-	-
General Customer Assistance	4	9	13	-	6	11	11	10	12	11	30	-	28
City of Napa Water Discharge	-	-	-	-	-	-	-	-	-	-	-	34	-
TOTAL	13	9	22	19	24	111	11	23	36	11	30	34	28
<u>SPECIAL PROJECTS</u>													
	22	7	9	32	2	0	6	16	0	0	22	21	23

POLLUTION PREVENTION WORKLOAD - MONTHLY

CATEGORY	Aug-16	Sep-16	Oct-16	Nov-16	Dec-16	Jan-17	Feb-17	Mar-17	Apr-17	May-17	Jun-17	Jul-17	Aug-17
<u>Outreach Activities</u>													
Plant Tours Conducted	0	0	7	8	0	1	4	11	3	4	1	2	1
Presentations Made	1	0	0	3	0	1	2	1	1	5	1	0	0
Total Outreach Activities	1	-	7	11	-	2	6	12	4	9	2	2	1
<u>Inspections Conducted</u>													
Food Service Facilities	-	1	-	-	37	21	53	35	25	-	-	-	-
Auto Body & Car Wash	-	-	-	-	-	-	-	-	-	-	-	-	-
Other	-	-	-	-	-	-	-	-	-	-	-	-	-
Total Inspections	-	1	-	-	37	21	53	35	25	-	-	-	-
<u>Compliance Issues</u>													
NOVs Issued	-	-	-	-	2	-	1	4	-	-	1	-	-
NOEs Issued	-	1	-	1	2	-	1	1	-	1	-	-	1
Non-Compliant-FOG	-	-	-	-	-	-	1	1	-	-	-	-	-
Total Compliance Issues	-	1	-	1	4	-	3	6	-	1	1	-	1
<u>Pollution Prevention</u>													
Clothes Washer Rebates	-	-	-	20	26	28	21	-	-	28	21	1	1
Toilet Retrofit Rebates	11	4	12	8	12	5	4	7	1	2	7	16	6
Pharmaceuticals Diverted (in lbs)	303	386	391	291	63	155	201	71	185	302	368	-	-

RECYCLED WATER DELIVERIES - MONTHLY

	Acres	Aug-16	Sep-16	Oct-16	Nov-16	Dec-16	Jan-17	Feb-17	Mar-17	Apr-17	May-17	Jun-17	Jul-17	Aug-17
MONTHLY (MG)														
Water Sold														
Golf Courses	405.0	63.227	49.600	25.538	6.308	0.002	0.245	-	0.081	2.513	53.481	66.261	73.994	58.595
Cemeteries	5.0	0.754	1.225	0.328	0.010	0.000	-	-	-	-	0.705	0.754	0.834	1.116
Parks	18.5	1.172	0.741	0.205	-	-	-	-	0.002	0.001	0.624	1.020	0.902	0.866
Schools	21.0	2.120	1.497	0.630	0.014	0.006	0.005	-	0.005	0.013	1.396	2.604	2.250	2.178
Commerical	167.6	17.259	15.070	9.563	3.457	0.490	1.191	0.404	0.501	2.493	15.246	17.491	17.454	17.391
Vineyards	564.0	21.832	17.609	6.065	3.528	0.302	0.194	0.063	0.101	7.119	4.868	10.709	19.143	30.814
Trucked Water	175.0	0.458	0.135	0.124	0.008	0.188	0.009	0.002	0.015	0.018	0.027	0.051	0.474	0.602
Subtotal Sales	1,356.1	106.821	85.877	42.454	13.326	0.988	1.644	0.469	0.705	12.156	76.347	98.891	115.051	111.563
District Use														
Jameson	330.0	12.456	20.935	12.608	-	-	0.089	-	0.087	0.032	-	-	7.298	18.483
Somky	213.0	21.318	22.108	10.000	0.001	-	-	-	0.002	-	6.256	11.738	11.488	13.426
Fagundes/Airport	50.5	-	-	-	-	-	-	-	-	-	-	-	-	-
Subtotal District	593.5	33.774	43.043	22.609	0.001	-	0.089	-	0.089	0.032	6.256	11.738	18.786	31.910
TOTAL DELIVERED	1,949.6	140.594	128.920	65.062	13.327	0.988	1.733	0.469	0.794	12.188	82.603	110.628	133.837	143.473
ANNUAL (AF)														
Water Sold														
Golf Courses	405.0	920	946	960	971	968	969	969	969	936	985	1,013	1,047	1,033
Cemeteries	5.0	13	15	14	14	14	14	14	14	14	14	14	14	15
Parks	18.5	17	17	16	16	16	16	16	16	16	16	16	14	13
Schools	21.0	38	37	36	34	34	34	34	34	33	32	32	32	33
Commerical	167.6	302	308	304	301	301	304	305	299	287	300	301	309	309
Vineyards	564.0	215	268	285	265	266	266	265	264	270	279	270	281	308
Trucked Water	175.0	6	5	4	4	5	5	5	5	4	4	4	5	5
Subtotal Sales	1,356.1	1,512	1,596	1,619	1,605	1,603	1,609	1,607	1,600	1,559	1,630	1,650	1,702	1,717
District Use														
Jameson	330.0	153	167	163	163	163	163	163	163	163	163	158	164	183
Somky	213.0	230	223	222	222	222	222	222	222	222	241	268	254	230
Fagundes/Airport	50.5	-	-	-	-	-	-	-	-	-	-	-	-	-
Subtotal District	593.5	383	390	385	385	385	385	385	385	385	404	427	419	413
TOTAL DELIVERED	1,949.6	1,894	1,986	2,004	1,990	1,988	1,994	1,992	1,985	1,945	2,034	2,077	2,121	2,130

BIOSOLIDS HANDLING - MONTHLY

Site	Aug-16	Sep-16	Oct-16	Nov-16	Dec-16	Jan-17	Feb-17	Mar-17	Apr-17	May-17	Jun-17	Jul-17	Aug-17
<u>Land Applied by NSD</u>													
Somky													
Airport/Fagundes													
Jameson Canyon	217	65	97	35	-	-	-	-	-	-	370	442	153
Subtotal by NSD	217	65	97	35	-	-	-	-	-	-	370	442	153
<u>Land Applied by Contractor</u>													
Somky													
Airport/Fagundes													
Jameson Canyon													
Subtotal by Contractor	-	-	-	-	-	-	-	-	-	-	-	-	-
Total Land Applied	217	65	97	35	-	-	-	-	-	-	370	442	153
Off Site (Contractor)													
Total (tons)	217	65	97	35	-	-	-	-	-	-	370	442	153

COLLECTION SYSTEM MAINTENANCE - MONTHLY

CATEGORY	Aug-16	Sep-16	Oct-16	Nov-16	Dec-16	Jan-17	Feb-17	Mar-17	Apr-17	May-17	Jun-17	Jul-17	Aug-17
<u>Plugups</u>													
Total Calls	52	48	56	68	84	75	51	61	39	37	44	43	36
Business Hours	35	35	34	38	54	49	30	43	25	21	25	25	27
After Hours	17	13	22	30	30	26	21	18	14	16	19	18	9
District's	17	18	12	27	28	27	15	21	10	10	12	16	10
Property Owner's	35	30	44	41	56	48	36	40	29	27	32	27	26
Plugged Main Lines	1		1	2	2	3							
Run Lateral w/Eel	85	111	83	94	65	113	110	215	116	188	85	139	191
<u>Cleaning (feet of sewer)</u>													
Vactor #1	61,502	47,869	40,711	32,046	12,220	31,694	30,016	52,800	10,888	56,860	35,077	18,053	17,179
Vactor #2		2,184	14,730	1,512	23,277	18,222	18,062	34,405	53,959	7,819	44,357	41,749	58,712
Hydro													
Rodder													
Total (feet)	61,502	50,053	55,442	33,557	35,497	49,915	48,077	87,205	64,846	64,679	79,433	59,802	75,891
<u>Cleaning Days</u>													
Vactor #1	19	15	13	15	7	9	11	14	5	16	12	8	8
Vactor #2		1	4	1	8	7	7	11	17	4	16	13	23
Hydro													
Rodder													
<u>Feet/day</u>													
Vactor #1	3,250	3,200	3,150	2,150	1,750	3,500	2,750	3,750	2,200	3,550	2,900	2,250	2,150
Vactor #2		2,200	3,700	1,500	2,900	2,600	2,600	3,150	3,150	1,950	2,750	3,200	2,550
Hydro													
Rodder													
<u>Video Inspections</u>													
Mains (feet)	15,885	6,453	10,131	6,826	13,141	5,981	6,398	17,209	15,580	25,066	24,881	15,731	15,789
Laterals (each)	140	161	174	182	191	203	175	324	249	251	205	265	246
<u>Construction (each)</u>													
Cleanouts	3	16	8	10	6	4	10	16	4	16	7	31	17
Laterals			10	5		1		4	3	4	15		9
Mains			3										
Manholes			1					1					
Other										50			2
<u>USA Markings</u>													
Regular (w/in 2 days)	326	252	215	214	160	151	186	254	305	297	258	215	264
Emergency (w/in 2 hours)	8	10	6	4	18	7	7	13	8	3	6	5	3

WASTEWATER PLANT OPERATIONS DATA - MONTHLY

CATEGORY	Units	Aug-16	Sep-16	Oct-16	Nov-16	Dec-16	Jan-17	Feb-17	Mar-17	Apr-17	May-17	Jun-17	Jul-17	Aug-17
FLOWES		31	30	31	30	31	31	28	31	30	31	30	31	31
Influent	MG	186.6	178.1	212.3	226.4	346.3	693.3	634.5	394.1	353.8	234.9	206.4	201.5	199.7
Average Day	MGD	6.0	5.9	6.8	7.5	11.2	22.4	22.7	12.7	11.8	7.6	6.9	6.5	6.4
Maximum Day	Date	27-Aug	5-Sep	28-Oct	20-Nov	16-Dec	10-Jan	7-Feb	23-Mar	9-Apr	1-May	11-Jun	4-Jul	21-Aug
Maximum Day Flow	MG	6.2	6.2	12.7	10.9	26.7	45.8	45.7	23.3	23.4	8.5	7.2	6.8	6.7
Minimum Day	Date	23-Aug	27-Sep	11-Oct	8-Nov	7-Dec	1-Jan	1-Feb	20-Mar	30-Apr	24-May	30-Jun	31-Jul	30-Aug
Minimum Day Flow	MG	5.9	5.7	5.7	6.2	6.4	8.3	11.2	8.9	8.6	7.1	6.6	6.4	6.3
Effluent	MG	155.7	132.2	83.5	442.0	369.9	529.2	718.6	730.8	480.3	98.9	117.1	146.3	158.0
River Discharge	MG				426.1	357.6	529.2	718.6	725.8	463.4	-	-	-	-
Recycled Flow	MG	155.7	132.2	83.5	16.0	12.2	-	-	5.0	16.8	98.9	123.3	134.0	158.0
BIOSOLIDS	Tons	361	397	499	591	658	439	355	488	568	507	639	521	952
Wet Tons Generated from Pond	Tons													
Wet Tons Generated from Plant	Tons	361	397	499	591	658	439	355	488	568	507	639	521	952
Wet Tons Hauled Offsite	Tons													
POLYMER USE	Gallons	15,943	22,716	11,710	9,676	7,306	3,670	2,394	1,979	4,644	6,112	9,760	4,352	1,987
Pond Pre-Flocculators	Gallons	7,184	9,409	4,594	6,988	3,966	2,003	-	-	2,676	-	-	-	-
Flocculator Polymer 1	Gallons													
Flocculator Polymer 2	Gallons	586	610	110	1,150	913	1,148	1,927	1,325	720	-	-	-	-
Filter Polymer 1	Gallons	7,388	12,023	6,282	766	1,697	-		47	746	5,662	8,984	3,739	914
Filter Polymer 2	Gallons													
Belt Presses	Gallons	785	674	724	772	730	519	467	607	502	450	776	613	1,073
ENERGY														
Total Electricity Used	MWH	939	708	668	657	630	709	683	749	759	713	739	807	849
Purchased from PGE	MWH	714	489	436	655	630	709	683	583	378	330	338	412	469
Produced from Co-Gen	MWH	225	219	233	3	-	-	-	166	245	213	225	203	253
Percent Produced	%	24%	31%	35%	0%				22%	32%	30%	30%	25%	30%
Purchased from Solar	MWH	-	-	-	-	-	-	-	14	159	202	203	213	172
Percent Produced									2%	21%	28%	27%	26%	20%
Purchased Natural Gas	Therms	780	1,653	745	36	4	-	13	205	50	21	51	858	56
Methane Flared Off	KSCF	42	135	67	4,051	4,407	3,225	2,722	986	56	15	225	127	156
Stand By Calls	#	22	61	41	52	50	24	41	63	42	55	86	48	44
Violations	#	-	-	-	-	-	-	-	-	-	-	-	-	-

WASTEWATER PLANT MAINTENANCE and LABORATORY DATA - MONTHLY

CATEGORY	Aug-16	Sep-16	Oct-16	Nov-16	Dec-16	Jan-17	Feb-17	Mar-17	Apr-17	May-17	Jun-17	Jul-17	Aug-17
<u>Scheduled</u>													
Old	37	39	50	57	48	75	49	43	40	75	41	37	28
New	100	75	91	88	80	86	61	106	91	87	90	72	78
Completed	98	64	84	97	53	112	67	109	56	121	94	81	89
New Balance	39	50	57	48	75	49	43	40	75	41	37	28	17
<u>Unscheduled</u>													
Old	71	62	62	56	57	57	49	48	48	61	46	47	45
New	28	33	25	33	31	30	27	21	24	24	56	29	40
Completed	37	33	31	32	31	38	28	21	11	39	55	31	47
New Balance	62	62	56	57	57	49	48	48	61	46	47	45	38
<u>Total Work Orders</u>													
Old	108	101	112	113	105	132	98	91	88	136	87	84	73
New	128	108	116	121	111	116	88	127	115	111	146	101	118
Completed	136	96	115	129	84	151	95	130	67	161	149	112	132
New Balance	101	112	113	105	132	98	91	88	136	87	84	73	55
<u>LAB ANALYSES</u>													
<u>Sample Type</u>													
Regulatory	179	193	204	168	175	192	214	210	218	177	230	173	193
Process Control	907	739	766	1,315	1,209	1,189	1,051	1,370	1,167	820	1,107	1,024	1,104
Special Request	93	-	19	39	40	3	1	1	-	6	200	-	-
Quality Control/Assurance	5	5	50	302	299	303	272	301	497	32	47	223	12
TOTAL	1,184	937	1,039	1,824	1,723	1,687	1,538	1,882	1,882	1,035	1,584	1,420	1,309

**Summary of NSD Capital Project Status
through 08-31-17**

Proj #	Description	FY 17-18 Budget	FY 16-17 Carryovers	Adj.	Final FY 17-18 Budget	Encumbrance	Costs Paid to Date	Budget Remaining	% Budget Expended
	<u>COLLECTION SYSTEM</u>								
13701	Main Line Sewer Rehab	91,800			91,800	-	-	91,800	-
13702	Manhole Raising/Rehab	206,000			206,000	-	2,099	203,901	1%
13703	Lateral Replacement/Rehab	74,500			74,500	580	13,678	60,242	18%
13704	Cleanouts Installation/Rehab	90,000			90,000	-	18,824	71,176	21%
13705	I&I Reduction Program	207,000			207,000	-	413	206,587	0%
14703	Browns Valley Rd & First St	9,237,000			9,237,000	-	9,080	9,227,920	0%
17702	Upper Lateral Rehab - Basin L (Pilot #2)	155,300			155,300	-	784	154,516	1%
17704	Infltrtn Rehab - SSMH/PL (CI-)	-			-	-	-	-	-
17705	Soscol Ave (8th to Oil Co Rd)	950,000			950,000	-	5,660	944,340	1%
17707	66-inch Trunk CCTV Inspection	-			-	-	-	-	-
17708	Basin G - I&I Reduction #1	2,942,000			2,942,000	-	27,371	2,914,629	1%
17734	Homewood/Westwood I/I Reduction	-			-	-	-	-	-
18701	I&I Smoke Testing	100,000			100,000	-	-	100,000	-
18702	Collection System Asset Management Software	350,000			350,000	-	-	350,000	-
18703	Upper Lateral Rehab - Basin L (Pilot) #3	5,000			5,000	-	-	5,000	-
18704	Manhole Rehab - Nipak - Basin H	284,600			284,600	-	1,674	282,926	1%
18705	Sewer System Inflow/Infiltration 2018	1,650,000			1,650,000	-	10,612	1,639,388	1%
18706	Sewer System Inflow/Infiltration 2019	20,000			20,000	-	-	20,000	-
	<u>COLLECTION SYSTEM - EQUIPMENT</u>								
18707	Locatable Mini-Camera #2 Replacement	11,100			11,100	-	-	11,100	-
18708	Manhole - Smart Covers (4)	25,000			25,000	-	-	25,000	-
18709	Vehicle 504 - TV Truck	270,000			270,000	-	-	270,000	-
18735	Permaliner Picote	-			-	-	-	-	-
	<u>LIFT STATIONS</u>								
17711	West Napa PS - Rehab	-			-	-	-	-	-
	<u>TREATMENT</u>								
13745	Pond 1 Dredge	400,000			400,000	-	-	400,000	-
16708	Algae to Digester/Thermal Stdy	-			-	-	-	-	-
	<u>TREATMENT - EQUIPMENT</u>								
13735	Dual Fuel Boiler Burner	155,300			155,300	-	-	155,300	-

**Summary of NSD Capital Project Status
through 08-31-17**

Proj #	Description	FY 17-18 Budget	FY 16-17 Carryovers	Adj.	Final FY 17-18 Budget	Encumbrance	Costs Paid to Date	Budget Remaining	% Budget Expended
13741	Secondary PS Pump Rebuild (3)	38,800			38,800	32,296	-	6,504	-
13743	Risidual Analyzers (Deox) Replacements	5,000			5,000	-	1,903	3,097	38%
15711	Rotork Actuator Replacement	-			-	-	-	-	-
15713	Aeration Basin Instrmntn/Ctrl	-			-	-	-	-	-
16714	High Voltage System Repairs	-			-	-	-	-	-
17713	Secondary PS VFD Rplcmnt (3)	55,400			55,400	-	108	55,292	0%
17714	WWTP MP - 3W Sys Imprvmnts	440,000			440,000	-	5,454	434,546	1%
17715	Turbidimeters (7) Tertiary Rplcmnts	20,000			20,000	19,750	-	250	-
17718	Energy Audit - LED Pole/Arm Mounted Fixtures	-			-	-	-	-	-
17725	Main - Sump #3 Modification	-			-	-	-	-	-
18710	3W Pipeline - Soscol PS to Plant - Rehab	33,300			33,300	-	-	33,300	-
18711	3W Strainer	83,200			83,200	-	-	83,200	-
18712	3W VFD	62,100			62,100	-	-	62,100	-
18713	Primary Influent Pipe - East Gallery	250,000			250,000	-	-	250,000	-
18714	Distillation System	6,000			6,000	-	-	6,000	-
18715	Muffle Furnace - Replacement	15,000		(10,000)	5,000	-	-	5,000	-
18716	Rotork Actuator Replacement	91,800			91,800	-	-	91,800	-
18717	Septage Card Reader Replacement	21,400			21,400	-	-	21,400	-
18718	Secondary Clarifier Mech/Struct Rehabilitation	50,000			50,000	-	-	50,000	-
18719	Filter Flow Control - Rotork Valves	46,600			46,600	-	-	46,600	-
18720	Neuros Blowers Rebuild	62,100			62,100	-	-	62,100	-
18721	CCB #3 Effluent Gate	5,000			5,000	-	-	5,000	-
18722	FOG Station Water Heater	5,000			5,000	-	-	5,000	-
18723	Pond 4 PS - Repair Leak	24,000			24,000	-	-	24,000	-
18724	Filter 1-4 Air Valve	10,000			10,000	-	-	10,000	-
18725	Belt Press Hydraulic Actuator Replace	20,000			20,000	-	-	20,000	-
18734	Boat Motor Vehicle 302	-		10,000	10,000	1,906	5,432	2,662	54%
	TREATMENT - STRUCTURES								
17726	Headworks Equipment Rehab/Replacment	250,000			250,000	-	108	249,892	0%
18726	Building HVAC and Lab Ventilation	500,000			500,000	-	-	500,000	-
18727	Earthquake - Structural Repair	300,000			300,000	-	-	300,000	-
18728	Roof Rplcmnt - Solids Handling/Digester Tower	232,900			232,900	-	-	232,900	-
18736	Treatment Plant Project 2018	-			-		-	-	-

**Summary of NSD Capital Project Status
through 08-31-17**

Proj #	Description	FY 17-18 Budget	FY 16-17 Carryovers	Adj.	Final FY 17-18 Budget	Encumbrance	Costs Paid to Date	Budget Remaining	% Budget Expended
	<u>SCADA</u>								
18729	SCADA MP Project #1 - Network Monitoring	50,000			50,000	-	-	50,000	-
	<u>RECYCLING - DISTRICT</u>								
16716	Line Recycled Water Reservoir	1,800,000			1,800,000	-	3,189	1,796,811	0%
18730	Jameson 24" Flow Meter Rehab	6,200			6,200	-	-	6,200	-
18731	Coombsville Truck Fill Station	100,000			100,000	-	-	100,000	-
	<u>RECYCLING - EXPANSION</u>								
13727	North Bay Wate Reuse Project	150,000			150,000	-	76,799	73,201	51%
14726	MST RW Pipeline Construction	-			-		-	-	-
16722	MST RW Pipeline Extension	2,800,000			2,800,000	-	1,156,974	1,643,026	41%
	<u>OTHER</u>								
13729	Development Technical Support	239,900			239,900	-	51,897	188,003	22%
18732	Box Culvert - Fugundes Emergency Access	5,000			5,000	-	-	5,000	-
18733	GPS Handheld	15,000			15,000	-	7,958	7,042	53%
GRAND TOTAL ALL PROJECTS		\$25,018,300	-	-	\$25,018,300	\$54,533	\$1,400,017	\$23,563,751	6%