



Napa Sanitation District

General Manager's Report

for

May, 2017

Contents:

- a. Transmittal Memo
- b. Budget Status and Cash Summary
- c. Key Information Graphs – Fund Balances, Treatment Plant and Collection
- d. Fund Balances
- e. Development Processing
- f. Construction Inspection
- g. Pollution Prevention
- h. Recycled Water Deliveries
- i. Biosolids Handling
- j. Collection System Maintenance
- k. Treatment Plant Operations
- l. Treatment Plant Maintenance & Laboratory
- m. Capital Project Expenditure Summary



NAPA SANITATION DISTRICT

General Manager's Report

Dedicated to Preserving the Napa River for Generations to Come

DATE: July 19, 2017

FROM: Timothy B. Healy, General Manager

SUBJECT: General Manager's Report for May, 2017

REGULATORY COMPLIANCE:

Collection System Compliance:	0 Category 1 SSO's, 0 Category 2 SSO's, and 7 Category 3 SSO's
NPDES Permit (WWTP) Compliance:	Full compliance with all regulations
Air Quality Compliance:	Full compliance with all regulations
Recycled Water Compliance:	Full compliance with all regulations
Biosolids Compliance:	Full compliance with all regulations
Significant Comments:	None

FISCAL STATUS:

Period Covered:	July 1, 2016 – May 31, 2017
Percent Fiscal Year:	91.7%
Operating Expenditures to date:	66.7%
Historical Expenditures to date:	87.1%
Significant Comments:	Historically, the intrafund transfers from Operating to Capital were done on a quarterly basis. Last fiscal year, the transfer was done all at once, which increased the Operating Expenditures significantly. This fiscal year, only the 1 st quarter's transfer was done due to the low cashflow in the Operating fund at the beginning of the year. If the 2 nd and 3 rd quarters' transfers were done, the Operating Expenditures would have been 82.0%, closer to the Historical Expenditures to date.

PERSONNEL:

Significant events for the month of May, 2017 in the Human Resources Department:

New Hires:	None
Separations:	None
Promotions:	None
Recruitment Activities:	Began recruitment for Operator-in-Training/Operator I
Injuries:	None

Summaries of Operational Highlights are on following pages.

COLLECTIONS:

Significant events for the month of May 2017 in Collection System Maintenance include:

- The District had 0 Category 1 Sanitary Sewer Overflows (SSO's), 0 Category 2 SSO's and 7 Category 3 SSO's during the month. (A Category 1 is defined as an SSO that reached a drainage channel and/or surface water or; an SSO that reached a storm drain pipe that was not fully recovered and returned to the sanitary sewer system. A Category 2 is defined as an SSO that is equal to or greater than 1,000 gallons that did not reach a surface water. A Category 3 is defined as an SSO that is less than 1,000 gallons that did not reach a surface water. These are usually minor overflows of less than 10 gallons from cleanouts on District laterals that can be cleaned up by the crews.)
- The repair crew installed 9 cleanouts, repaired/rehabilitated 4 sewer laterals, repaired 6 cleanouts and raised 50 existing NSD cleanouts. Additionally, the service response programs crew completed 138 work orders in support of the grease and odor control program, responded to 32 customer requests for service (10 were NSD problem) and closed out 300 mark and locate request tickets.
- The preventative maintenance crews ran work orders on 188 laterals, cleaned approximately 65,654 feet of main line and CCTV inspected approximately 25,065 feet of main line and 29 laterals.

TREATMENT PLANT:

Significant events for the month of May 2017 in the Treatment Plant Department:

Plant Operations

- For May 2017, the plant's influent flow was 234.9 MG as compared to last year flow for May 2016 of 218.9 MG
- There was no flow to the Napa River for May 2017.
- The production of recycle quality occurred for 29 days during May 2017 with a total flow of 98.9 MG.
- This May the facility consumed 713,284 KWH. Cogeneration produced 215,254 KWH (30%) and solar produced 168,489 KWH (24%). Purchase from PG&E was metered at 329,541 KWH in comparison to May 2016 purchase of 415,000 KWH.
- There was 0.00" rain fall for May 2017 as compared to 0.00" rain fall for May 2016.
- Pond 4 end of the month recorded level reading was 26.04" as compared to May 2016 of 48.92". Total remaining pond capacity for May 2017 was 56.5% as compared to May 2016 remaining capacity of 37.4%.

Maintenance:

Significant events for the month of May, 2017:

Cogeneration Performance

- Cogeneration unit ran 744 of 744 hours for the month – 100% uptime, averaging 289 KW or 215,254 KWH for the month which is 30% of the facility's use.

Process Maintenance

- Cogeneration unit emission test by BAAQMD - in compliance with permit
- Repaired Recycle Load-out Actuator # 2
- Replaced fan motor on filter air compressor # 2
- DAFT air compressor # 1, replaced soft start, all valves and unloaders
- Wet-end overhaul of mixer pump for FOG tank # 2
- Replaced Terminal Board, Magnet and Register for Eagle Vines Flow Meter
- Replaced #3 & #4 Grit Plug Valves
- Installed new HMI and sun-shade at IPS Bio-Air control cabinet
- Replaced WAS Pump AB # 4

Projects

- Phase II stationary gas monitoring replacement, CIP 17722/complete
- Installed 2 Ultrasonic Algae Abatement Power units & Transducers @ P-4
- Primary Odor Fan Structures, CIP 17724/complete
- VFD'S for Primary Exhaust Fans, CIP 17717/complete
- Rotork Actuator Replacement, CIP 15711/complete

Standby Power

- Plant generators operational testing only
- Riverpark, West Napa, Stonecrest operational testing only

Influent Pumps

- Pumps are all operational

Laboratory:

- Monthly composite Influent (INF-001) monitoring was conducted on May 16th, 2017. Monthly Cyanide and annual Priority Pollutant monitoring was conducted on May 17th. Sample analysis indicated no unusual results and was within local limits.
- Monthly Recycle Effluent (REC-001) monitoring was conducted on May 16th, 2017. Sample analysis indicated no unusual results and was within the state's Water Reuse Requirements and the District's Recycled Water limits.

RECYCLING:

Significant events in the Recycling Department for May 2017 include:

- Recycled water delivered for the month of May 2017 (82.603 million gallons), is higher as compared to May 2016 (53.413) million gallons) due to golf course and district demand. Delivered recycled water volume represents the sum of all use site flow meter consumption values.
- Staff hosted approximately twenty five American Canyon High School students for their third time participating in an ongoing restoration project of Sheehy Creek at the Jameson Reuse Site. Several learning stations organized by the Napa County Resource Conservation District included irrigation principles and practices, soils and pollinating insects (Sola Bee Farms).
- Staff approved three recycled water connections, two sites in the LCWD area and one in the Napa Airport Centre area.
- Staff ceased encapsulating biosolids and initiated removing the solids from bags for land application.

POLLUTION PREVENTION:

Significant events in the Pollution Prevention Department for May 2017 include:

- The District conducted five presentations at Napa High School and attended the Vintage High School Career Fair. NapaSan staff led four tours of the facility for local students and the California Conservation Corps. Staff also held two community outreach meetings regarding the Browns valley Trunk Sewer Project.
- The Napa Safe Medication Collection Program collected 302 pounds of unneeded medications. The total amount of unneeded medications collected since program inception in September 2010 is 20,434 pounds.
- The District issued 2 Toilet Rebates at \$100 each for a total of \$200.
- The District issued 28 ESME Washer Rebates @ \$12.50 each for a total of \$350.

ENGINEERING / CAPITAL PROJECTS / DEVELOPMENT:

Significant events occurring in the Engineering Department for May 2017 include:

- Consultant continued design of the Browns Valley Trunk Project.
- Staff issued the Request for Proposals for design services for the West Napa Pump Station Rehabilitation Project.
- Staff issued a Request for Proposal for construction management on the Browns Valley Trunk Project and West Napa Pump Station Rehabilitation Project.

- Contractor began construction of the MST Recycled Water Expansion Project.
- Contractor began work for the Soscol/Sousa Trunk Rehabilitation Project. Staff continued project coordination with other agencies.
- Consultant and Staff continued work on the Asset Management Plan.
- Consultant continued design of the Recycled Water Reservoir Improvements Project.
- Contractor continued construction of the 2017 Collection System Rehabilitation Project.
- Staff continued design of the 2018 Collection System Rehabilitation Project.
- Staff investigated the collection system for sources of chloride
- Staff issued notice inviting bids for the Upper Lateral Rehabilitation Basin L (Pilot #2) Project.
- Staff continued design of the Manhole Rehabilitation – Basin H Project.
- Staff issued notice inviting bids for the Manhole Adjustment Project – Phase VI.
- NapaSan accepted completion of the Aeration Basin Diffusers, Instrumentation and Controls Project.
- Staff reviewed 36 sets of development plans and deemed 15 sets of plans complete. The approved plans consisted of one residential lateral, one residence, two public laterals, one main extension, four residential demolitions, one commercial demolition, six tenant improvements, three commercial buildings, and one commercial lateral.

Budget Status & Cash Summary - July 1, 2016 - May 31, 2017 (91.7% of the year)

<i>Expenditures</i>	FY 16/17 Budget	Expenditures to date	Encumbrances	Committed to date	Remaining Balance	Percent Committed
<u>Operating</u>						
Salaries & Benefits	\$9,371,370	\$7,512,145	\$0	\$7,512,145	\$1,859,225	80.2%
Services & Supplies	6,057,110	4,484,296	416,354	4,900,650	1,156,460	80.9%
Taxes	28,250	26,545	-	26,545	1,705	94.0%
Debt Service	4,773,050	4,770,871	-	4,770,871	2,179 (1)	100.0%
Intrafund Transfers	8,900,000	2,225,000	-	2,225,000	6,675,000 (2)	25.0%
Total Operating:	\$29,129,780	\$19,018,857	\$416,354	\$19,435,210	\$9,694,570 (3)	66.7%
<u>Capital</u>						
Bldgs/Improvements & Equip	\$19,283,950	\$7,664,586	\$4,635,894	\$12,300,480	\$6,983,470 (4)	63.8%
Intrafund Transfers	5,512,000	4,068,751	-	4,068,751	1,443,249	73.8%
Total Capital :	\$24,795,950	\$11,733,337	\$4,635,894	\$16,369,232	\$8,426,718	66.0%
Grand Total Expenditures:	\$53,925,730	\$30,752,194	\$5,052,248	\$35,804,442	\$18,121,288	66.4%

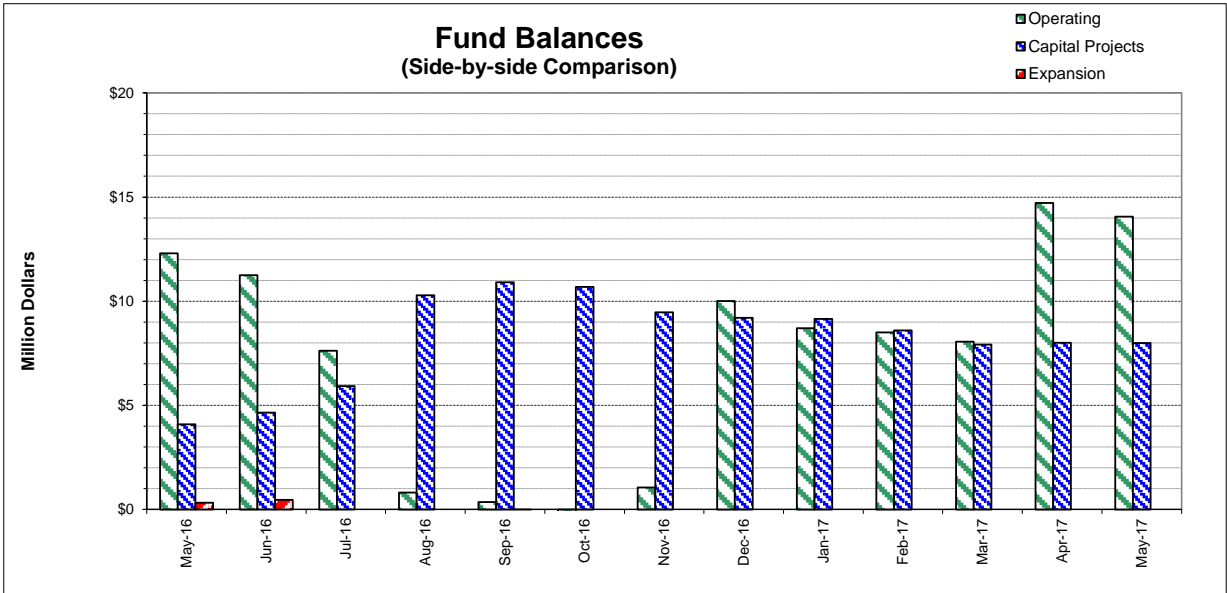
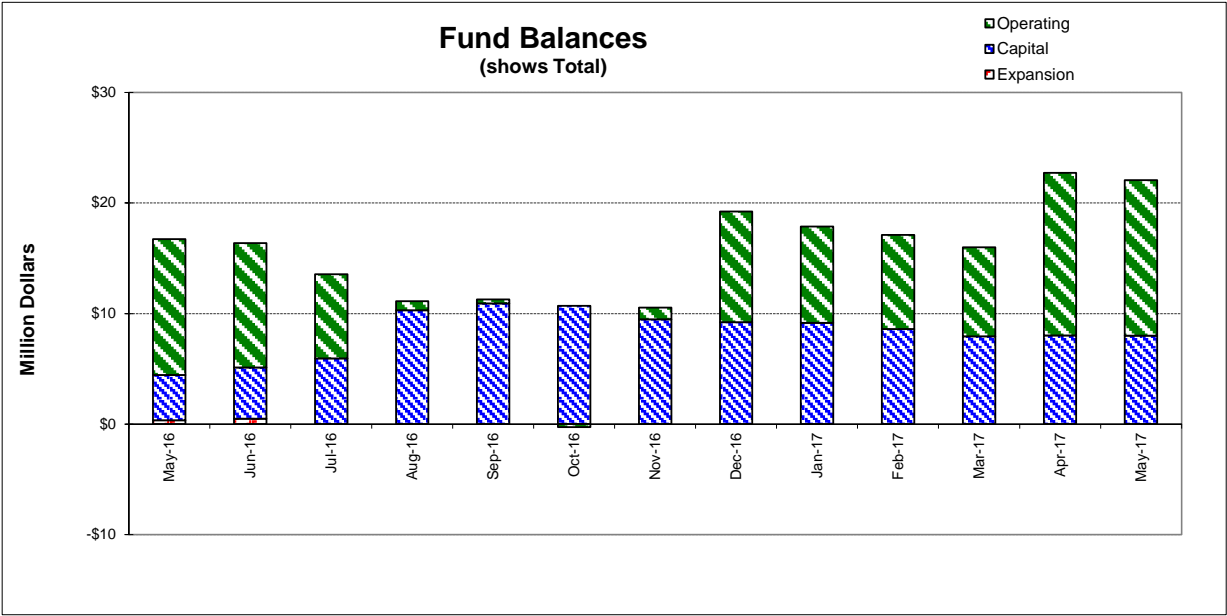
<i>Revenues</i>	FY 16/17 Budget	Collected to date	Encumbrances	Received to Date	Uncollected Revenue	Percent Collected
<u>Operating</u>						
Use of Money/Property	\$794,000	\$787,089		\$787,089	\$6,911	99.1%
Intergovernmental	\$0	\$13,680		13,680	(13,680)	N/A
Charges for Services	23,828,500	22,995,683		22,995,683	832,817	96.5%
Miscellaneous Revenues	69,000	84,484		84,484	(15,484) (5)	122.4%
Donations/Contributions (Capital Labor)	-	653,948		653,948	(653,948) (6)	N/A
Total Operating:	\$24,691,500	\$24,534,885		\$24,534,885	\$156,615	99.4%
<u>Capital</u>						
Use of Money/Property	\$34,000	\$1,336		\$1,336	\$32,664	3.9%
Capacity Charges	5,512,000	3,804,484		3,804,484	1,707,516	69.0%
Intergovernmental	2,250,000	2,006,916		2,006,916	243,084	89.2%
Bond Proceeds	4,550,000	-		-	4,550,000	0.0%
Sale of Assets	-	27,729		27,729	(27,729)	N/A
Miscellaneous Revenues	-	-		-	-	N/A
Intrafund Transfers	14,412,000	6,293,751		6,293,751	8,118,249 (2)	43.7%
Total Capital:	\$26,758,000	\$12,134,216		\$12,134,216	\$14,623,784	45.3%
Grand Total Revenue:	\$51,449,500	\$36,669,101		\$36,669,101	\$14,780,399	71.3%

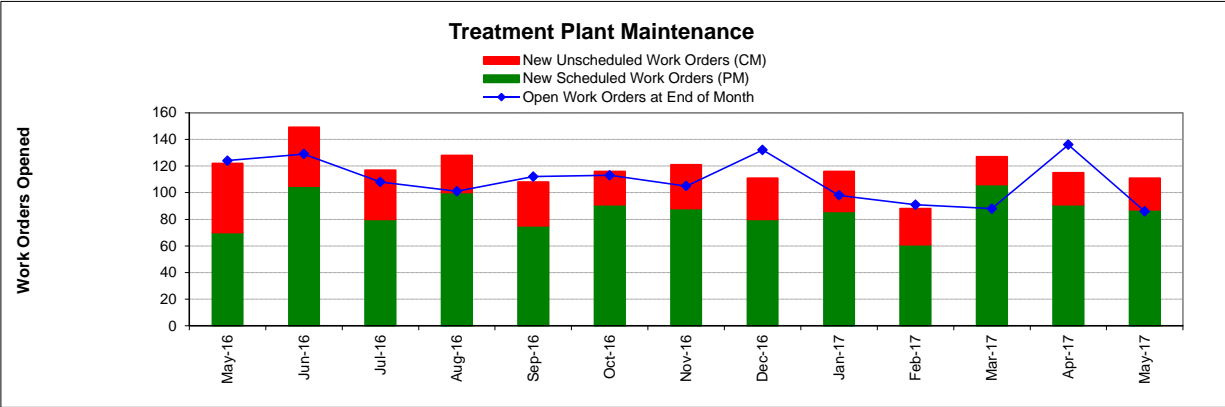
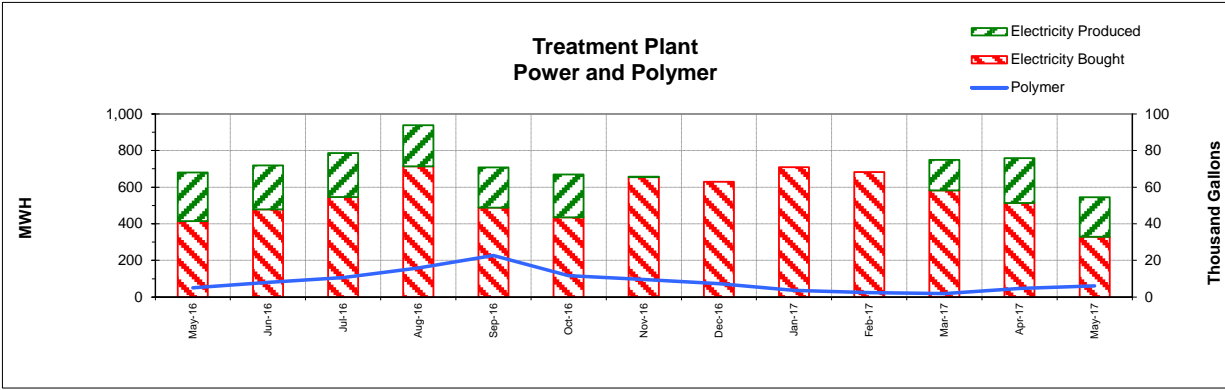
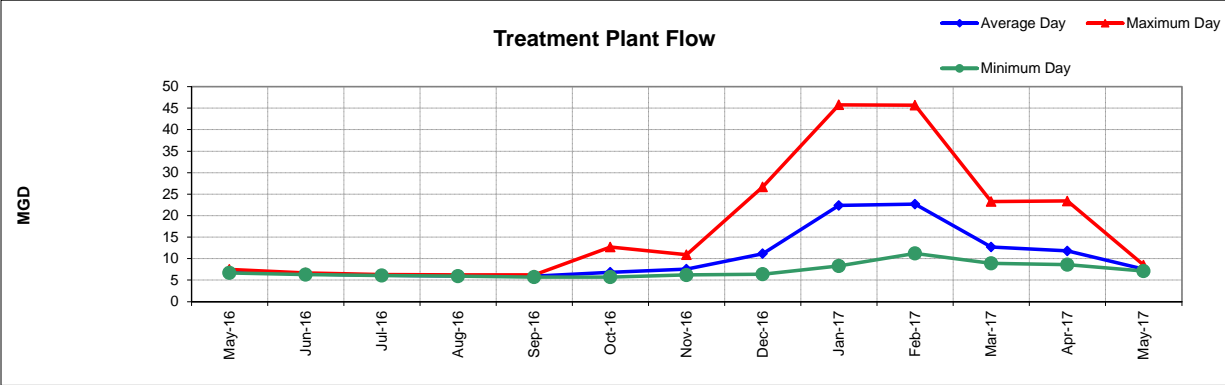
Cash on Hand as of 5/31/17 **\$22,053,781**

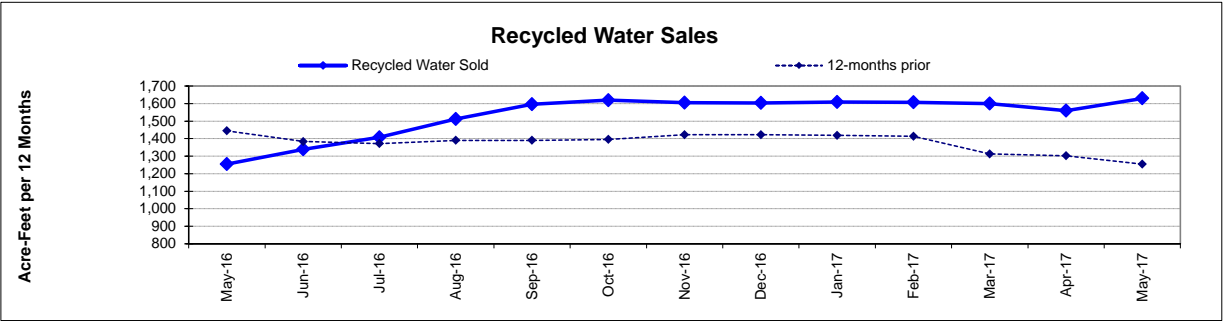
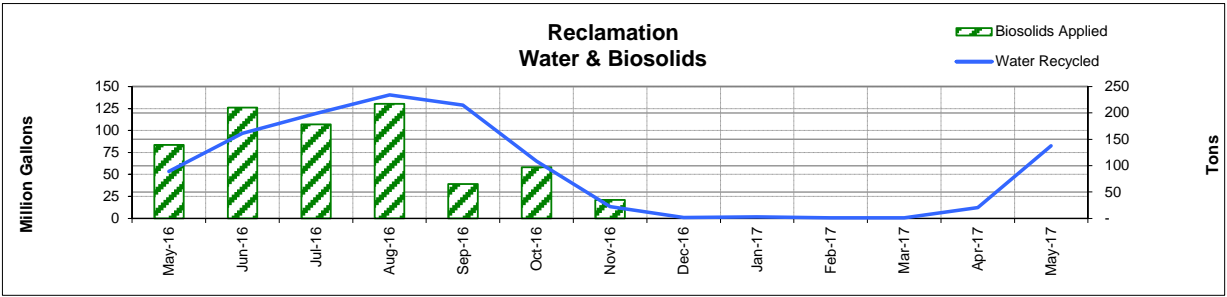
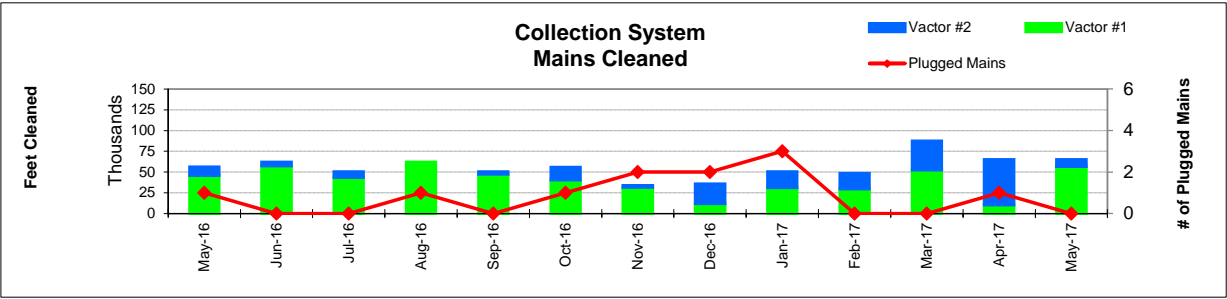
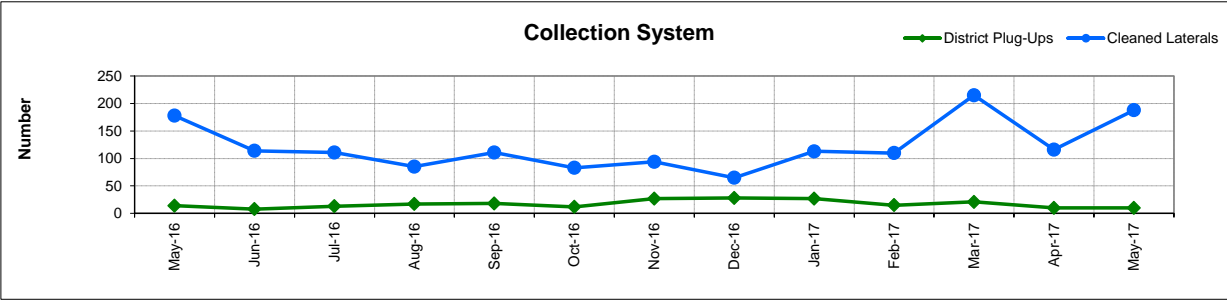
**excluding Debt Service restricted funds
05/31/17 - Effective Rate of Return = 0.91%

1. Series 2009B's and 2012A's principal/interest payments made in Aug & Feb
2. Processed 25% of intrafund transfer budget from Operating to Capital in July
3. Includes Debt Service and Intrafund Transfers; otherwise is 80.5%
4. See Capital Project Status report for details
5. Includes payment from consultant for a special board meeting on the solar power project.
6. In-house Labor for Capital Projects (Contra acct for Salaries)

This page intentionally left blank.







FUND BALANCES - MONTHLY

CATEGORY	May-16	Jun-16	Jul-16	Aug-16	Sep-16	Oct-16	Nov-16	Dec-16	Jan-17	Feb-17	Mar-17	Apr-17	May-17
<i>(Thousand Dollars)</i>													
7800	12,297	11,251	7,626	819	362	(293)	1,062	10,012	8,701	8,506	8,055	14,722	14,059
7850	-	-	-	-	-	-	-	-	-	-	-	-	-
Subtotal Operating	12,297	11,251	7,626	819	362	(293)	1,062	10,012	8,701	8,506	8,055	14,722	14,059
Capital Improvement Projects	4,096	4,649	5,924	10,284	10,912	10,685	9,470	9,204	9,154	8,598	7,921	8,001	7,995
Debt Proceeds	-	-	-	-	-	-	-	-	-	-	-	-	-
Subtotal Capital	4,096	4,649	5,924	10,284	10,912	10,685	9,470	9,204	9,154	8,598	7,921	8,001	7,995
Total Discretionary Funds	16,393	15,900	13,550	11,103	11,274	10,392	10,532	19,216	17,855	17,104	15,976	22,723	22,054
Expansion Fund (Restricted)	326	467	-	-	1	-	-	-	-	-	-	-	-
Total Restricted Funds	326	467	-	-	1	-	-	-	-	-	-	-	-
TOTAL ALL FUNDS	16,719	16,367	13,550	11,103	11,275	10,392	10,532	19,216	17,855	17,104	15,976	22,723	22,054

DEVELOPMENT WORKLOAD - MONTHLY

CATEGORY	May-16	Jun-16	Jul-16	Aug-16	Sep-16	Oct-16	Nov-16	Dec-16	Jan-17	Feb-17	Mar-17	Apr-17	May-17
<u>Phone Requests</u>													
Maps/Drawings	9	5	5	9	5	8	7	4	9	7	4	5	5
Lateral Permits	-	-	-	-	-	-	-	-	-	2	2	-	-
Policy Questions	9	10	7	11	7	3	8	6	6	10	6	4	10
Development Questions	58	75	99	126	56	61	48	47	45	60	63	62	91
Miscellaneous	14	14	14	15	7	4	6	4	8	6	6	8	8
TOTAL	90	104	125	161	75	76	69	61	68	85	81	79	114
<u>Counter Requests</u>													
Maps/Drawings	-	-	3	7	5	1	-	1	2	1	-	1	3
Lateral Permits	13	12	9	19	19	13	14	7	11	5	11	10	10
Policy Questions	-	2	-	2	2	2	1	-	3	2	1	-	5
Development Questions	2	10	17	30	17	10	8	4	9	13	5	15	29
Miscellaneous	-	3	5	6	4	2	1	2	3	1	-	1	5
TOTAL	15	27	34	64	47	28	24	14	28	22	17	27	52
<u>Initial Request (Referrals)</u>	17	14	12	22	10	7	21	23	17	11	25	17	22
<u>Connection Permits Issued</u>													
Residential Permits	6	9	-	1	1	21	-	-	-	1	3	1	1
Commercial Permits	3	2	1	1	2	6	4	3	-	1	3	1	4
Industrial Permits	-	-	-	-	-	-	-	-	-	-	-	-	-
TOTAL PERMITS	9	11	1	2	3	27	4	3	-	2	6	2	5
Residential Units	6	9	-	1	1	21	-	-	-	1	3	1	2
Commercial Units	3	2	1	1	146	14	4	3	-	3	-	1	4
TOTAL UNITS	9	11	1	2	147	35	4	3	-	4	3	2	6
<u>Annexations</u>													
Submitted	-	1	-	-	1	-	1	-	-	-	-	-	-
Acreage	-	1.50	-	-	1.10	-	27.11	-	-	-	-	-	-
<u>Plans Reviewed</u>													
<u>Subdivisions/Sites</u>													
First Submittal	1	5	1	8	4	3	5	2	10	2	4	11	6
Second Submittal	-	1	1	6	4	3	-	2	2	3	7	6	8
Third Submittal	1	1	3	1	7	-	1	3	2	1	5	1	2
<u>Building/Tenant Improvements</u>													
First Submittal	12	10	3	12	4	8	5	4	10	5	7	4	9
Second Submittal	7	4	6	4	9	3	4	4	5	2	5	4	4
Third Submittal	6	3	5	1	5	3	8	6	2	1	10	3	7
<u>Miscellaneous Plan Reviews</u>													
	-	-	-	-	-	-	-	-	1	-	-	-	-
TOTAL PLANS REVIEWED	27	24	19	32	33	20	23	21	32	14	38	29	36

INSPECTION WORKLOAD - MONTHLY

CATEGORY	May-16	Jun-16	Jul-16	Aug-16	Sep-16	Oct-16	Nov-16	Dec-16	Jan-17	Feb-17	Mar-17	Apr-17	May-17
<u>CONSTRUCTION</u>													
Locating Sewers	-	-	-	-	-	-	-	-	-	-	-	-	-
Permit Processing	-	-	-	-	-	-	-	-	-	-	-	-	-
Preconstruction Meetings	9	7	3	9	-	5	6	5	9	6	6	4	1
Inspections - Mains	2	-	2	1	-	-	10	1	-	-	6	1	-
Inspections - Manholes	8	13	3	-	-	81	27	89	46	16	15	61	1
Inspections - Laterals	29	22	20	20	9	7	37	11	24	17	50	14	3
Inspections - Cleanouts	60	51	28	25	4	29	71	20	42	38	74	25	-
Inspections - Review Video	-	4	-	3	-	2	2	4	1	-	-	-	2
Demo - Septic Tanks	-	-	-	-	-	-	-	-	-	-	-	-	-
Demo - Buildings	-	2	-	1	-	-	-	-	2	-	1	2	-
Update Record Drawings	-	-	-	-	-	-	-	-	-	-	-	-	-
TOTAL	108	99	56	59	13	124	153	130	124	77	152	107	7
<u>MISCELLANEOUS</u>													
Meter Readings	9	9	10	9	-	9	-	18	100	-	13	24	-
Washdown Facility Inspections	-	-	-	-	-	-	19	-	-	-	-	-	-
General Customer Assistance	10	1	4	4	9	13	-	6	11	11	10	12	11
City of Napa Water Discharge	-	-	-	-	-	-	-	-	-	-	-	-	-
TOTAL	19	10	14	13	9	22	19	24	111	11	23	36	11
<u>SPECIAL PROJECTS</u>													
	21	22	31	22	7	9	32	2	0	6	16	0	0

POLLUTION PREVENTION WORKLOAD - MONTHLY

CATEGORY	May-16	Jun-16	Jul-16	Aug-16	Sep-16	Oct-16	Nov-16	Dec-16	Jan-17	Feb-17	Mar-17	Apr-17	May-17
<u>Outreach Activities</u>													
Plant Tours Conducted	4	2	0	0	0	7	8	0	1	4	11	3	4
Presentations Made	2	0	0	1	0	0	3	0	1	2	1	1	5
Total Outreach Activities	6	2	-	1	-	7	11	-	2	6	12	4	9
<u>Inspections Conducted</u>													
Food Service Facilities	12	-	-	-	1	-	-	37	21	53	35	25	-
Auto Body & Car Wash	-	-	-	-	-	-	-	-	-	-	-	-	-
Other	-	-	-	-	-	-	-	-	-	-	-	-	-
Total Inspections	12	-	-	-	1	-	-	37	21	53	35	25	-
<u>Compliance Issues</u>													
NOVs Issued	-	2	1	-	-	-	-	2	-	1	4	-	-
NOEs Issued	2	-	-	-	1	-	1	2	-	1	1	-	1
Non-Compliant-FOG	-	-	-	-	-	-	-	-	-	1	1	-	-
Total Compliance Issues	2	2	1	-	1	-	1	4	-	3	6	-	1
<u>Pollution Prevention</u>													
Clothes Washer Rebates	14	45	-	-	-	-	20	26	28	21	-	-	28
Toilet Retrofit Rebates	6	10	-	11	4	12	8	12	5	4	7	1	2
Pharmaceuticals Diverted (in lbs)	240	243	362	303	386	391	291	63	155	201	71	185	302

RECYCLED WATER DELIVERIES - MONTHLY

	Acres	May-16	Jun-16	Jul-16	Aug-16	Sep-16	Oct-16	Nov-16	Dec-16	Jan-17	Feb-17	Mar-17	Apr-17	May-17
MONTHLY (MG)														
<u>Water Sold</u>														
Golf Courses	405.0	37.578	57.273	62.709	63.227	49.600	25.538	6.308	0.002	0.245	-	0.081	2.513	53.481
Cemeteries	5.0	0.447	0.709	0.931	0.754	1.225	0.328	0.010	0.000	-	-	-	-	0.705
Parks	18.5	0.725	1.078	1.299	1.172	0.741	0.205	-	-	-	-	0.002	0.001	0.624
Schools	21.0	1.528	2.675	2.181	2.120	1.497	0.630	0.014	0.006	0.005	-	0.005	0.013	1.396
Commerical	167.6	11.038	17.061	14.878	17.259	15.070	9.563	3.457	0.490	1.191	0.404	0.501	2.493	15.246
Vineyards	564.0	2.034	13.413	15.693	21.832	17.609	6.065	3.528	0.302	0.194	0.063	0.101	7.119	4.868
Trucked Water	175.0	0.064	0.135	0.232	0.458	0.135	0.124	0.008	0.188	0.009	0.002	0.015	0.018	0.027
Subtotal Sales	1,356.1	53.413	92.343	97.923	106.821	85.877	42.454	13.326	0.988	1.644	0.469	0.705	12.156	76.347
<u>District Use</u>														
Jameson	330.0	-	1.481	5.414	12.456	20.935	12.608	-	-	0.089	-	0.087	0.032	-
Somky	213.0	-	2.950	16.037	21.318	22.108	10.000	0.001	-	-	-	0.002	-	6.256
Fagundes/Airport	50.5	-	-	-	-	-	-	-	-	-	-	-	-	-
Subtotal District	593.5	-	4.431	21.451	33.774	43.043	22.609	0.001	-	0.089	-	0.089	0.032	6.256
TOTAL DELIVERED	1,949.6	53.413	96.773	119.374	140.594	128.920	65.062	13.327	0.988	1.733	0.469	0.794	12.188	82.603
ANNUAL (AF)														
<u>Water Sold</u>														
Golf Courses	405.0	840	869	891	920	946	960	971	968	969	969	969	936	985
Cemeteries	5.0	13	13	13	13	15	14	14	14	14	14	14	14	14
Parks	18.5	16	17	17	17	17	16	16	16	16	16	16	16	16
Schools	21.0	35	37	38	38	37	36	34	34	34	34	34	33	32
Commerical	167.6	276	294	293	302	308	304	301	301	304	305	299	287	300
Vineyards	564.0	68	103	149	215	268	285	265	266	266	265	264	270	279
Trucked Water	175.0	6	5	5	6	5	4	4	5	5	5	5	4	4
Subtotal Sales	1,356.1	1,254	1,339	1,407	1,512	1,596	1,619	1,605	1,603	1,609	1,607	1,600	1,559	1,630
<u>District Use</u>														
Jameson	330.0	103	107	124	153	167	163	163	163	163	163	163	163	163
Somky	213.0	221	195	208	230	223	222	222	222	222	222	222	222	241
Fagundes/Airport	50.5	-	-	-	-	-	-	-	-	-	-	-	-	-
Subtotal District	593.5	324	302	332	383	390	385	385	385	385	385	385	385	404
TOTAL DELIVERED	1,949.6	1,578	1,641	1,739	1,894	1,986	2,004	1,990	1,988	1,994	1,992	1,985	1,945	2,034

BIOSOLIDS HANDLING - MONTHLY

Site	May-16	Jun-16	Jul-16	Aug-16	Sep-16	Oct-16	Nov-16	Dec-16	Jan-17	Feb-17	Mar-17	Apr-17	May-17
<u>Land Applied by NSD</u>													
Somky													
Airport/Fagundes													
Jameson Canyon	139	210	178	217	65	97	35	-	-	-	-	-	-
Subtotal by NSD	139	210	178	217	65	97	35	-	-	-	-	-	-
<u>Land Applied by Contractor</u>													
Somky													
Airport/Fagundes													
Jameson Canyon													
Subtotal by Contractor	-	-	-	-	-	-	-	-	-	-	-	-	-
Total Land Applied	139	210	178	217	65	97	35	-	-	-	-	-	-
Off Site (Contractor)													
Total (tons)	139	210	178	217	65	97	35	-	-	-	-	-	-

COLLECTION SYSTEM MAINTENANCE - MONTHLY

CATEGORY	May-16	Jun-16	Jul-16	Aug-16	Sep-16	Oct-16	Nov-16	Dec-16	Jan-17	Feb-17	Mar-17	Apr-17	May-17
<u>Plugups</u>													
Total Calls	45	33	48	52	48	56	68	84	75	51	61	39	37
Business Hours	30	22	27	35	35	34	38	54	49	30	43	25	21
After Hours	15	11	21	17	13	22	30	30	26	21	18	14	16
District's	14	8	13	17	18	12	27	28	27	15	21	10	10
Property Owner's	31	25	35	35	30	44	41	56	48	36	40	29	27
Plugged Main Lines	1			1		1	2	2	3				
Run Lateral w/Eel	178	114	111	85	111	83	94	65	113	110	215	116	188
<u>Cleaning (feet of sewer)</u>													
Vactor #1	46,352	57,690	43,988	61,502	47,869	40,711	32,046	12,220	31,694	30,016	52,800	10,888	56,860
Vactor #2	9,687	4,002	6,288		2,184	14,730	1,512	23,277	18,222	18,062	34,405	53,959	7,819
Hydro													
Rodder													
Total (feet)	56,039	61,692	50,277	61,502	50,053	55,442	33,557	35,497	49,915	48,077	87,205	64,846	64,679
Cleaning Days	19	19	18	19	16	17	16	15	16	18	25	22	20
Vactor #1	17	17	15	19	15	13	15	7	9	11	14	5	16
Vactor #2	2	2	3		1	4	1	8	7	7	11	17	4
Hydro													
Rodder													
Feet/day	2,950	3,250	2,800	3,250	3,150	3,250	2,100	2,350	3,100	2,650	3,500	2,950	3,250
Vactor #1	2,750	3,400	2,950	3,250	3,200	3,150	2,150	1,750	3,500	2,750	3,750	2,200	3,550
Vactor #2	4,850	2,000	2,100		2,200	3,700	1,500	2,900	2,600	2,600	3,150	3,150	1,950
Hydro													
Rodder													
<u>Video Inspections</u>													
Mains (feet)	17,352	15,115	3,878	15,885	6,453	10,131	6,826	13,141	5,981	6,398	17,209	15,580	25,066
Laterals (each)	225	152	183	140	161	174	182	191	203	175	324	249	251
<u>Construction (each)</u>													
Cleanouts	7	10	7	3	16	8	10	6	4	10	16	4	16
Laterals	3	5	4			10	5		1		4	3	4
Mains						3							
Manholes						1					1		
Other	39												50
<u>USA Markings</u>													
Regular (w/in 2 days)	319	225	244	326	252	215	214	160	151	186	254	305	297
Emergency (w/in 2 hours)	-	6	14	8	10	6	4	18	7	7	13	8	3

[illegible]

WASTEWATER PLANT MAINTENANCE and LABORATORY DATA - MONTHLY

CATEGORY	May-16	Jun-16	Jul-16	Aug-16	Sep-16	Oct-16	Nov-16	Dec-16	Jan-17	Feb-17	Mar-17	Apr-17	May-17
<u>Scheduled</u>													
Old	66	53	55	37	39	50	57	48	75	49	43	40	75
New	70	105	80	100	75	91	88	80	86	61	106	91	87
Completed	83	103	98	98	64	84	97	53	112	67	109	56	121
New Balance	53	55	37	39	50	57	48	75	49	43	40	75	41
<u>Unscheduled</u>													
Old	64	71	74	71	62	62	56	57	57	49	48	48	61
New	52	44	37	28	33	25	33	31	30	27	21	24	24
Completed	45	41	40	37	33	31	32	31	38	28	21	11	40
New Balance	71	74	71	62	62	56	57	57	49	48	48	61	45
<u>Total Work Orders</u>													
Old	130	124	129	108	101	112	113	105	132	98	91	88	136
New	122	149	116	128	108	116	121	111	116	88	127	115	111
Completed	128	144	138	136	96	115	129	84	151	95	130	67	161
New Balance	124	129	108	101	112	113	105	132	98	91	88	136	86
<u>LAB ANALYSES</u>													
<u>Sample Type</u>													
Regulatory	130	158	193	179	193	204	168	175	192	214	210	218	177
Process Control	778	729	744	907	739	766	1,315	1,209	1,189	1,051	1,370	1,167	820
Special Request	320	11	207	93	-	19	39	40	3	1	1	-	6
Quality Control/Assurance	209	5	32	5	5	50	302	299	303	272	301	497	32
TOTAL	1,437	903	1,176	1,184	937	1,039	1,824	1,723	1,687	1,538	1,882	1,882	1,035

**Summary of NSD Capital Project Status
through 05-31-17**

Proj #	Description	FY 16-17 Budget	FY 15-16 Carryovers	Adj.	Final FY 16-17 Budget	Encumbrance	Costs Paid to Date	Budget Remaining	% Budget Expended
<u>COLLECTION SYSTEM</u>									
13701	Main Line Sewer Rehab	88,700		(60,000)	28,700	-	5,226	23,474	18%
13702	Manhole Raising/Rehab	198,900		60,000	258,900	-	238,881	20,019	92%
13703	Lateral Replacement/Rehab	72,000			72,000	8,723	54,188	9,089	75%
13704	Cleanouts Installation/Rehab	87,000			87,000	6,388	54,547	26,065	63%
13705	I&I Reduction Program	200,000		24,000	224,000	85,620	130,656	7,724	58%
14703	Browns Valley Rd & First St	2,800,000	813,800		3,613,800	340,871	466,648	2,806,281	13%
15703	Sarco Crk PL Rplcmnt/CalTRANS	1,050,000	(34,250)	98,000	1,113,750	116,052	993,650	4,048	89%
15721	ACP CIPP Lining Project #1	-	330,000		330,000	-	311,543	18,458	94%
16701	Basin L - I&I Reduction #5	1,400,000	(490,400)	(189,500)	720,100	-	715,956	4,144	99%
16718	NN Siphon Vault Cover Replacement	-	5,000		5,000	-	1	4,999	0%
16723	Milliken Creek Sewer Repair	-	150,000	150,000	300,000	-	268,955	31,045	90%
17701	ACP CIPP Lining Project #2	350,000		(350,000)	-	-	-	-	-
17702	Upper Lateral Rehab - Basin L (Pilot #2)	5,000			5,000	-	3,645	1,355	73%
17703	Manhole Rehab - Nipak	90,000		3,000	93,000	-	92,089	911	99%
17704	Infltrtn Rehab - SSMH/PL (CI-)	400,000		(300,000)	100,000	-	26,071	73,929	26%
17705	Soscol Ave (8th to Oil Co Rd)	500,000			500,000	392,527	63,979	43,495	13%
17706	Rehab - Ranch De Los Robles	400,000		(400,000)	-	-	-	-	-
17707	66-inch Trunk CCTV Inspection	150,000			150,000	-	420	149,580	0%
17708	Basin G - I&I Reduction #1	1,200,000		1,180,000	2,380,000	2,000,000	52,796	327,204	2%
17734	Homewood/Westwood I/I Reduction	-		200,000	200,000	-	170,450	29,550	85%
<u>COLLECTION SYSTEM - EQUIPMENT</u>									
17709	Eel Replacment 1	5,400		100	5,500	-	5,454	46	99%
17710	Vehicle 510 - Water Truck	207,900		(18,100)	189,800	-	186,160	3,640	98%
<u>LIFT STATIONS</u>									
17711	West Napa PS - Rehab	1,750,000			1,750,000	-	1,764	1,748,236	0%
<u>TREATMENT</u>									
16708	Algae to Digester with Thermal Study	-	50,450		50,450	22,913	3,617	23,920	7%
17712	Headworks/Primary - Odor Ctrl	20,000		5,000	25,000	-	17,015	7,985	68%
<u>TREATMENT - EQUIPMENT</u>									
13741	Secondary PS Pump Rebuild (3)	37,500	7,200	7,500	52,200	-	52,081	119	100%
13743	Risidual Analyzers (Deox) Replacements	-		20,000	20,000	-	16,484	3,516	82%
14720	Belt Press Polymer Skid Replacement	-	55,700		55,700	-	47,724	7,976	86%
15711	Rotork Actuator Replacement	-	52,750	88,700	141,450	17,000	115,607	8,843	82%
15712	Rehab Pond 1 Storage Structure	25,000	5,000	(30,000)	-	-	-	-	-
15713	Aeration Basin Instrmntn/Ctrl	1,200,000	(126,000)	500,000	1,574,000	10,283	1,454,891	108,826	92%
16713	Buried Metallic Piping (eval/rehab)	40,000	10,000	(8,200)	41,800	-	-	41,800	-
16714	High Voltage System Repairs	-	30,000	50,000	80,000	4,900	11,548	63,552	14%
16715	Cogen Bottom End Overhaul	75,000	150,000		225,000	218,378	-	6,622	-
17713	Secondary PS VFD Rplcmnt (3)	53,600			53,600	-	2,447	51,153	5%

**Summary of NSD Capital Project Status
through 05-31-17**

Proj #	Description	FY 16-17 Budget	FY 15-16 Carryovers	Adj.	Final FY 16-17 Budget	Encumbrance	Costs Paid to Date	Budget Remaining	% Budget Expended
17714	WWTP MP - 3W Sys Imprvmnts	60,000			60,000	27,832	6,793	25,375	11%
17715	Turbidimeters (7) Tertiary Rplcmnts	11,800		11,200	23,000	14,041	7,575	1,384	33%
17716	FOG - Strain Press	200,000			200,000	-	167,472	32,528	84%
17717	Energy Audit - Odor Control VFD	51,700			51,700	-	9,741	41,959	19%
17718	Energy Audit - LED Pole/Arm Mounted Fixtures	78,100		50,000	128,100	82,186	4,891	41,023	4%
17719	Lab - Smpler 4700 - Pretreatment	7,500		(800)	6,700	-	-	6,700	-
17720	Lab - Smpler 4700 - Pretreatment	7,500			7,500	-	-	7,500	-
17721	Lab - Chlorophyll A Analyzer - Pond Water	5,400		800	6,200	-	6,105	95	98%
17722	Main - Stationary Gas Detector Replacment Ph 2	140,000		35,000	175,000	7,796	151,266	15,938	86%
17723	Main - Rotork Actuator Replacment	88,700		(88,700)	-	-	-	-	-
17724	Main - Primary Clarifier Exhaust Fan Replacment	5,000		(5,000)	-	-	-	-	-
17725	Main - Sump #3 Modification	10,000			10,000	-	-	10,000	-
<u>TREATMENT - STRUCTURES</u>									
13724	IPS Expansion	-	38,700		38,700	6,483	8,789	23,429	23%
17726	Headworks Equipment Rehab/Replacment	10,000		100,000	110,000	5,239	67,353	37,408	61%
17727	Roof Replacement - Digester 2nd Floor	125,000		(10,000)	115,000	-	110,713	4,287	96%
17728	Roof Replacement - AB/Blower Building	40,000		5,000	45,000	-	43,162	1,838	96%
17729	DAF Access Opening	20,000			20,000	-	-	20,000	-
<u>SCADA</u>									
<u>RECYCLING - DISTRICT</u>									
15717	Isolation Valve on Kirkland Line (Devlin Rd)	49,200	14,400	10,000	73,600	-	66,508	7,092	90%
16716	Line Recycled Water Reservoir	1,320,000	(18,400)	(1,000,000)	301,600	8,897	120,469	172,234	40%
17730	Jameson Solids Pad Dump Bay	15,000		(15,000)	-	-	-	-	-
17731	Jameson Office Trailer Replacment	25,000			25,000	-	19,405	5,595	78%
17732	Vehicle 710 - 8830 Tractor	200,000		(30,000)	170,000	-	165,932	4,068	98%
17733	Vehicle 172 - Ford F150	28,000		5,000	33,000	-	30,900	2,100	94%
<u>RECYCLING - EXPANSION</u>									
13727	North Bay Wate Reuse Project	845,000			845,000	-	475,277	369,724	56%
14726	MST RW Pipeline Construction	-	500,000		500,000	300,504	21,640	177,857	4%
14727	Split N/S Lines, surge protection	-	50,000		50,000	10,615	19,506	19,879	39%
15718	LCWD Recycled Water Pipeline - Construction	-	500,000	(98,000)	402,000	307,461	52,567	41,973	13%
16722	MST RW Pipeline Extension	1,200,000	(700)		1,199,300	641,188	325,077	233,036	27%
<u>OTHER</u>									
13729	Development Technical Support	231,800			231,800	-	218,952	12,848	94%
16717	Admin/Engineering Bldg - Acoustic Improvements	-	10,000		10,000	-	-	10,000	-
GRAND TOTAL ALL PROJECTS		\$17,180,700	\$2,103,250	-	\$19,283,950	\$4,635,894	\$7,664,586	\$6,983,474	40%