



**Napa Sanitation District**

**General Manager's Report**

**for**

**April, 2017**

**Contents:**

- a. Transmittal Memo
- b. Budget Status and Cash Summary
- c. Key Information Graphs – Fund Balances, Treatment Plant and Collection
- d. Fund Balances
- e. Development Processing
- f. Construction Inspection
- g. Pollution Prevention
- h. Recycled Water Deliveries
- i. Biosolids Handling
- j. Collection System Maintenance
- k. Treatment Plant Operations
- l. Treatment Plant Maintenance & Laboratory
- m. Capital Project Expenditure Summary



## NAPA SANITATION DISTRICT

## General Manager's Report

*Dedicated to Preserving the Napa River for Generations to Come*

---

**DATE:** June 7, 2017

**FROM:** Timothy B. Healy, General Manager

**SUBJECT:** General Manager's Report for April, 2017

### **REGULATORY COMPLIANCE:**

Collection System Compliance:	0 Category 1 SSO's, 0 Category 2 SSO's, and 2 Category 3 SSO's
NPDES Permit (WWTP) Compliance:	Full compliance with all regulations
Air Quality Compliance:	Full compliance with all regulations
Recycled Water Compliance:	Full compliance with all regulations
Biosolids Compliance:	Full compliance with all regulations
Significant Comments:	None

### **FISCAL STATUS:**

Period Covered:	July 1, 2016 – April 30, 2017
Percent Fiscal Year:	83.3%
Operating Expenditures to date:	64.4%
Historical Expenditures to date:	82.4%
Significant Comments:	Historically, the intrafund transfers from Operating to Capital were done on a quarterly basis. Last fiscal year, the transfer was done all at once, which increased the Operating Expenditures significantly. This fiscal year, only the 1 <sup>st</sup> quarter's transfer was done due to the low cashflow in the Operating fund at the beginning of the year. If the 2 <sup>nd</sup> and 3 <sup>rd</sup> quarters' transfers were done, the Operating Expenditures would be 79.6%, closer to the Historical Expenditures to date.

Sewer service charges were received from the second installment payments of the property taxes in April.

### **PERSONNEL:**

Significant events for the month of April, 2017 in the Human Resources Department:

New Hires:	None
Separations:	None
Promotions:	None
Recruitment Activities:	Interviewed volunteer OIT candidates, Engineering and Lab Interns
Injuries:	None

*Summaries of Operational Highlights are as follows:*

**COLLECTIONS:**

Significant events for the month of April 2017 in Collection System Maintenance include:

- The District had 0 Category 1 Sanitary Sewer Overflows (SSO's), 0 Category 2 SSO's and 2 Category 3 SSO's during the month. (A Category 1 is defined as an SSO that reached a drainage channel and/or surface water or; an SSO that reached a storm drain pipe that was not fully recovered and returned to the sanitary sewer system. A Category 2 is defined as an SSO that is equal to or greater than 1,000 gallons that did not reach a surface water. A Category 3 is defined as an SSO that is less than 1,000 gallons that did not reach a surface water. These are usually minor overflows of less than 10 gallons from cleanouts on District laterals that can be cleaned up by the crews.)
- The repair crew installed 2 cleanouts and repaired/rehabilitated 4 sewer laterals. Additionally, the service response/programs crew completed 108 work orders in support of the grease and odor control program, responded to 43 customer requests for service (12 were NSD problem) and closed out 309 mark and locate request tickets.
- The preventative maintenance crews ran work orders on 115 laterals, cleaned approximately 64,846 feet of main line and CCTV inspected approximately 15,580 feet of main line and 95 laterals.

**TREATMENT PLANT:**

Significant events for the month of April 2017 in the Treatment Plant Department:

**Plant Operations**

- For April 2017, the plant's influent flow was 353.8 MG as compared to last year flow for April 2016 of 249.2 MG
- Total flow to the Napa River for April 2017 was 463.4 MG as compared to April 2016 flow of 282.4 MG.
- The production of recycle quality occurred for 6 days during April 2017 with a total flow of 16.8 MG.
- This April power consumption purchased from PG&E was 759 MWH in comparison to April 2016 purchase of 737 MWH.
- There was 3.06" rain fall for April 2017 as compared to 1.00" rain fall for April 2016.
- Pond 4 end of the month recorded level reading was 28.78" as compared to April 2016 of 38.54". Total remaining pond capacity for April 2017 was 55.7% as compared to April 2016 remaining capacity of 48.2%.

**Maintenance:**

Significant events for the month of April, 2017:

**Cogeneration Performance**

- Cogeneration unit ran 717 of 720 hours for the month – 99.58% uptime, averaging 332.49 Kw

#### Process Maintenance

- Cogeneration unit monthly emission test - in compliance with BAAQMD permit.
- Replaced relay control panel for AB gallery fans
- Replaced VFD for AB blower Fan 103
- Filter cell # 4 Rotork Actuator/ replaced motor, resolver and 1 fuse
- Replaced injection ring on IPS Bio-Air unit

#### Standby Power

- Plant generators operational testing only
- Riverpark, West Napa, Stonecrest operational testing only

#### Influent Pumps

- Pumps are all operational

#### Laboratory:

- Monthly **River Discharge Effluent (EFF-001)** monitoring was conducted on April 4 and April 11, 2017. Sample results indicated constituent concentrations were within the District NPDES Permit limits. Quarterly PCB (EPA 1668C) monitoring to satisfy the SF Bay Mercury and PCBs Watershed Permit (Order No. R2-2012-0096, NPDES No. CA0038849) was conducted on April 4, 2017.
- Monthly **Influent (INF-001)** monitoring was conducted on April 4, 2017. Sample results indicated no unusual results and were within local limits.
- Monthly **Acute Bioassay** monitoring was sampled and analyzed from April 3 through April 7, 2017. Monitoring results indicated NPDES Permit compliance with 100% survival in the effluent and 100% survival in the control.
- Monthly **Receiving Water (RSW)** monitoring was conducted on April 4, 2017. Sample results indicated no unusual results.
- Monthly **Recycle Effluent (REC-001)** monitoring was conducted on April 6, 2017. Sample results indicated no unusual results and were within the state's Water Reuse Requirements and the District's Recycled Water limits.

**RECYCLING:**

Significant events in the Recycling Department for April 2017 include:

- Recycled water delivered for the month of April 2017 (12.188 million gallons), as compared to April 2016 (25.378 million gallons) is lower due to prolonged wet weather patterns. Delivered recycled water volume represents the sum of all use site flow meter consumption values.
- Staff provided recycled water user supervisors a refresher training course with thirty two participants completing the course.
- Staff approved two new recycled water customers in the LCWD area.
- Staff continued encapsulating biosolids on the Jameson Reuse Site due to wet weather.

**POLLUTION PREVENTION:**

Significant events in the Pollution Prevention Department for April 2017 include:

- Three facility tours were given to the public and school groups. One presentation was given.
- The Napa Safe Medication Collection Program collected 185 pounds of unneeded medications. The total amount of unneeded medications collected since program inception in September 2010 is 20,132 pounds.
- The District issued 1 Toilet Rebates for \$100.
- The District issued 0 ESME Washer Rebates.
- NapaSan staff attended the American Canyon High Career Fair and participated in the downtown Napa Earth Day festival.

**ENGINEERING / CAPITAL PROJECTS / DEVELOPMENT:**

Significant events occurring in the Engineering Department for April 2017 include:

- Consultant continued design of the Browns Valley Trunk Project.
- Staff issued and received Consultant Statements of Qualifications for design services for the West Napa Pump Station Rehabilitation Project.
- Staff issued the Notice to Proceed for the MST Recycled Water Pipeline Expansion Project.
- Staff issued the Notice of Award for the Soscol/Sousa Trunk Rehabilitation Project.
- Consultant and Staff continued work on the Asset Management Plan.
- Consultant continued design of the Recycled Water Reservoir Improvements Project.
- Contractor started construction of the 2017 Collection System Rehabilitation Project.
- Staff started design of the 2018 Collection System Rehabilitation Project.

- Staff started design of the Upper Lateral Rehabilitation Basin L (Pilot #2) Project.
- Staff started design of the Manhole Rehabilitation – Nipak #2 Project.
- Staff started design of the Manhole Adjustment Project – Phase VI.
- Staff issued notice to proceed to the contractor for the LED Pole/Arm Fixture Replacement project.
- Contractor completed construction of the Aeration Basin Diffusers, Instrumentation and Controls Project.
- Contractor completed construction of the Stationary Gas Detectors Phase II Project.
- The contractors continued construction of the following projects:
  - a. Homewood/Westwood Manhole Rehabilitation Project
- Staff reviewed 47 sets of development plans and deemed 16 sets of plans complete. The approved plans consisted of three residential laterals, three residential buildings, four residential demolitions, one commercial demolition, three tenant improvements, one commercial building, and one recycled water lateral.

**Budget Status & Cash Summary - July 1, 2016 - April 30, 2017 (83.3% of the year)**

<i>Expenditures</i>	<b>FY 16/17 Budget</b>	<b>Expenditures to date</b>	<b>Encumbrances</b>	<b>Committed to date</b>	<b>Remaining Balance</b>	<b>Percent Committed</b>
<b><u>Operating</u></b>						
Salaries & Benefits	\$9,371,370	\$6,859,131	\$0	\$6,859,131	\$2,512,239	73.2%
Services & Supplies	6,057,110	4,225,785	638,825	4,864,610	1,192,500	80.3%
Taxes	28,250	26,545	-	26,545	1,705	94.0%
Debt Service	4,773,050	4,769,921	-	4,769,921	3,129 (1)	99.9%
Intrafund Transfers	8,900,000	2,225,000	-	2,225,000	6,675,000 (2)	25.0%
<b>Total Operating:</b>	<b>\$29,129,780</b>	<b>\$18,106,381</b>	<b>\$638,825</b>	<b>\$18,745,206</b>	<b>\$10,384,574 (3)</b>	<b>64.4%</b>
<b><u>Capital</u></b>						
Bldgs/Improvements & Equip	\$19,283,950	\$7,330,309	\$3,646,844	\$10,977,153	\$8,306,797 (4)	56.9%
Intrafund Transfers	5,512,000	3,959,105	-	3,959,105	1,552,895	71.8%
<b>Total Capital :</b>	<b>\$24,795,950</b>	<b>\$11,289,414</b>	<b>\$3,646,844</b>	<b>\$14,936,258</b>	<b>\$9,859,692</b>	<b>60.2%</b>
<b>Grand Total Expenditures:</b>	<b>\$53,925,730</b>	<b>\$29,395,795</b>	<b>\$4,285,669</b>	<b>\$33,681,464</b>	<b>\$20,244,266</b>	<b>62.5%</b>

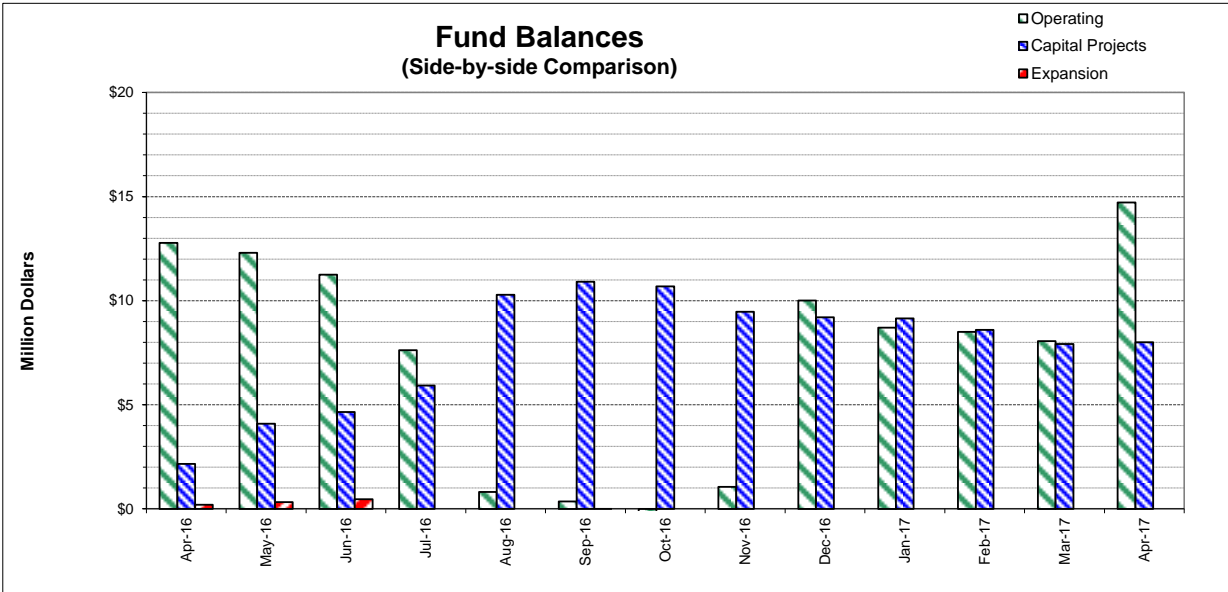
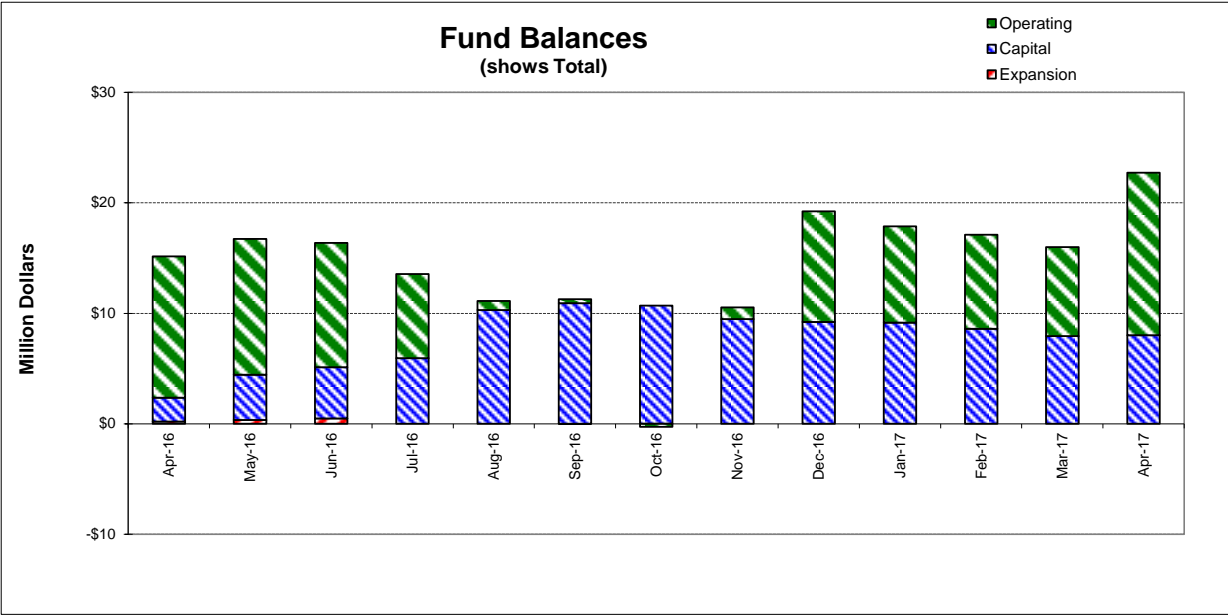
<i>Revenues</i>	<b>FY 16/17 Budget</b>	<b>Collected to date</b>	<b>Encumbrances</b>	<b>Received to Date</b>	<b>Uncollected Revenue</b>	<b>Percent Collected</b>
<b><u>Operating</u></b>						
Use of Money/Property	\$794,000	\$786,789		\$786,789	\$7,211	99.1%
Intergovernmental	\$0	\$13,680		13,680	(13,680)	N/A
Charges for Services	23,828,500	22,735,693		22,735,693	1,092,807	95.4%
Miscellaneous Revenues	69,000	87,556		87,556	(18,556) (5)	126.9%
Donations/Contributions (Capital Labor)	-	582,194		582,194	(582,194) (6)	N/A
<b>Total Operating:</b>	<b>\$24,691,500</b>	<b>\$24,205,912</b>		<b>\$24,205,912</b>	<b>\$485,588</b>	<b>98.0%</b>
<b><u>Capital</u></b>						
Use of Money/Property	\$34,000	\$1,336		\$1,336	\$32,664	3.9%
Capacity Charges	5,512,000	3,606,014		3,606,014	1,905,986	65.4%
Intergovernmental	2,250,000	2,006,916		2,006,916	243,084	89.2%
Bond Proceeds	4,550,000	-		-	4,550,000	0.0%
Sale of Assets	-	18,700		18,700	(18,700)	N/A
Miscellaneous Revenues	-	-		-	-	N/A
Intrafund Transfers	14,412,000	6,184,105		6,184,105	8,227,895 (2)	42.9%
<b>Total Capital:</b>	<b>\$26,758,000</b>	<b>\$11,817,071</b>		<b>\$11,817,071</b>	<b>\$14,940,929</b>	<b>44.2%</b>
<b>Grand Total Revenue:</b>	<b>\$51,449,500</b>	<b>\$36,022,983</b>		<b>\$36,022,983</b>	<b>\$15,426,517</b>	<b>70.0%</b>

**Cash on Hand as of 4/30/17**

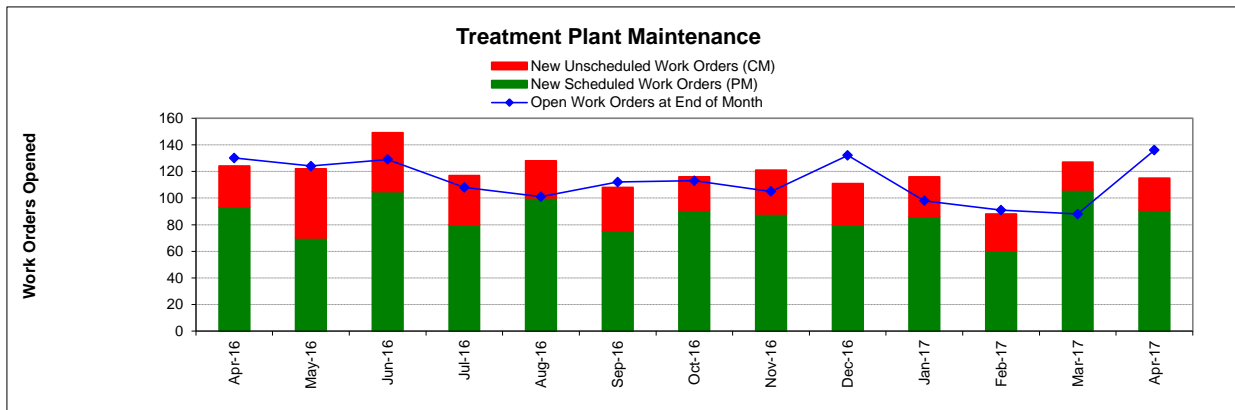
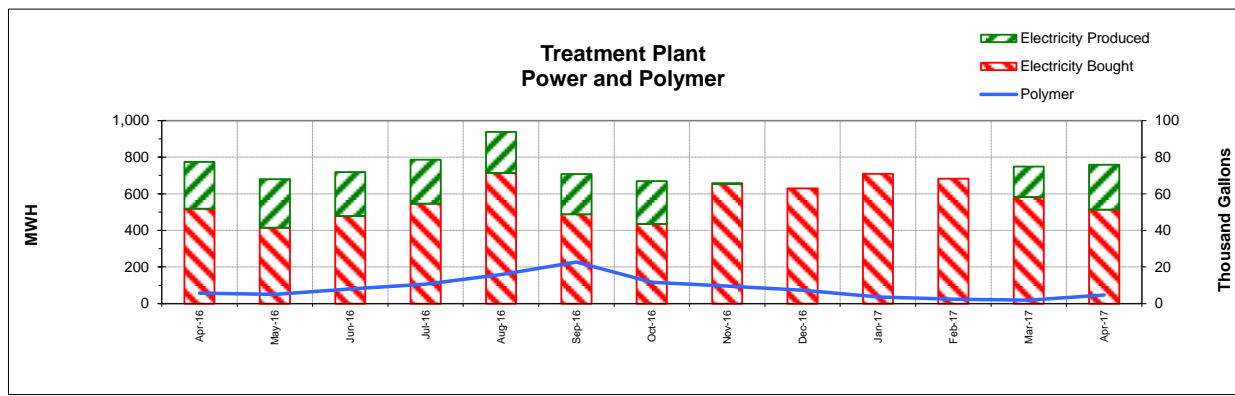
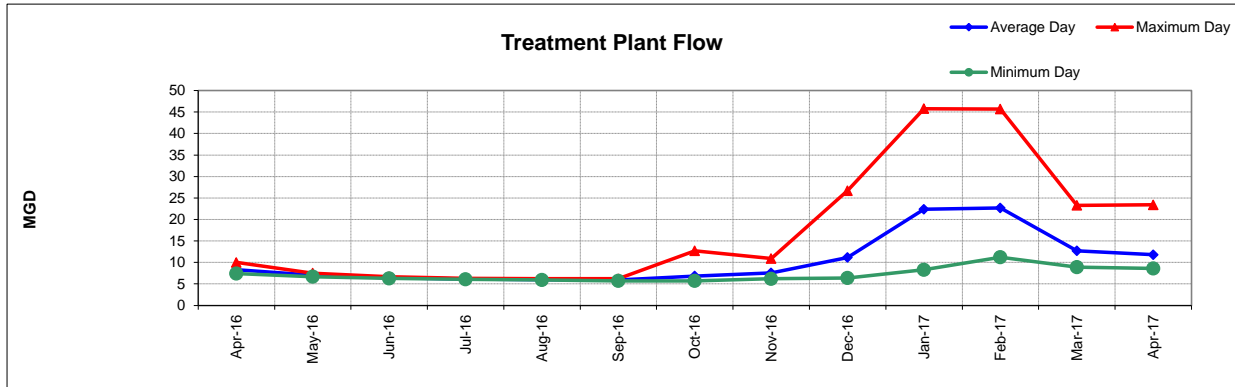
**\$22,723,026**

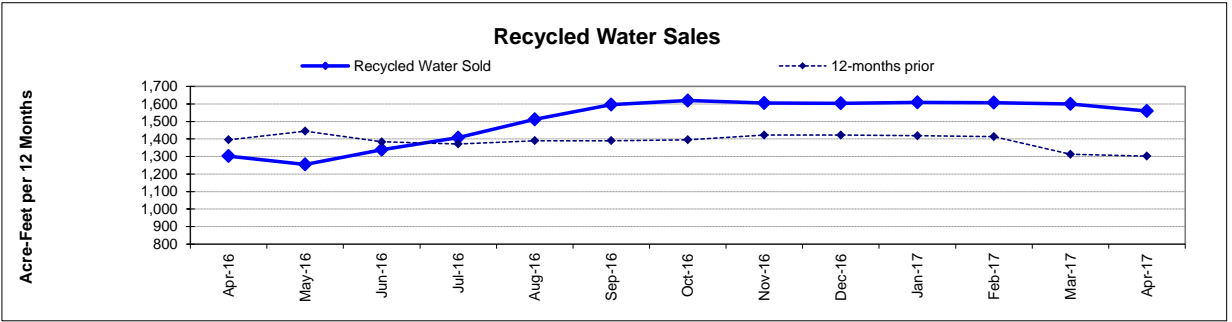
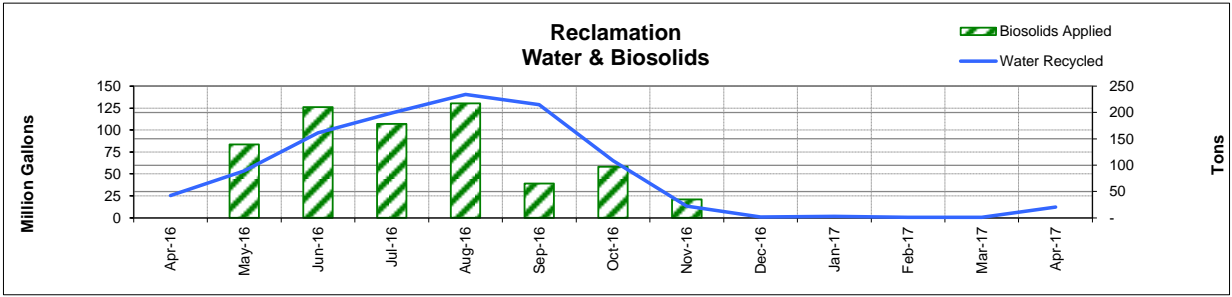
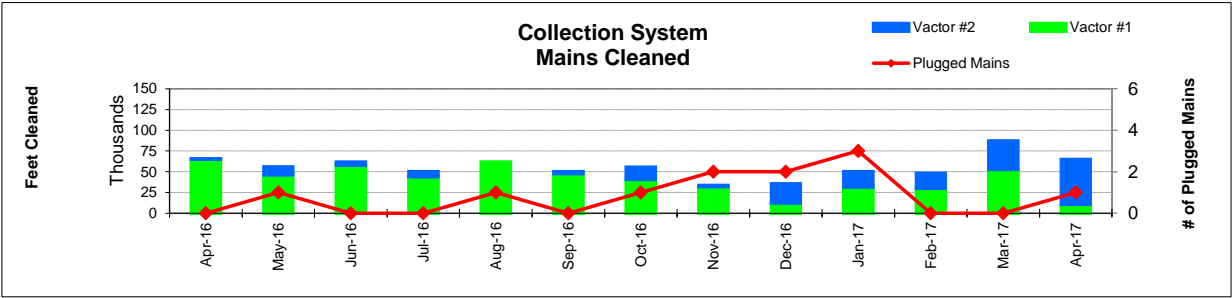
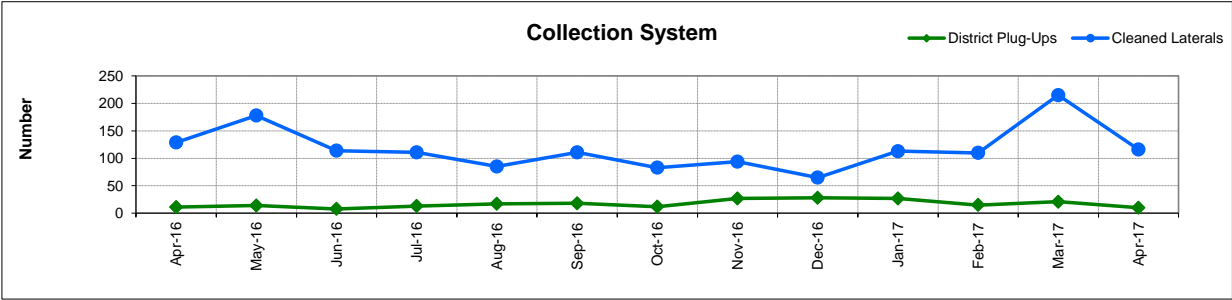
\*\*excluding Debt Service restricted funds  
03/31/17 - Effective Rate of Return = 0.86%  
(Note: Rate for April unavailable at the time of report)

1. Series 2009B's and 2012A's principal/interest payments made in Aug & Feb
2. Processed 25% of intrafund transfer budget from Operating to Capital in July
3. Includes Debt Service and Intrafund Transfers; otherwise is 76.0%
4. See Capital Project Status report for details
5. Includes payment from consultant for a special board meeting on the solar power project.
6. In-house Labor for Capital Projects (Contra acct for Salaries)









**FUND BALANCES - MONTHLY**

<b>CATEGORY</b>	<b>Apr-16</b>	<b>May-16</b>	<b>Jun-16</b>	<b>Jul-16</b>	<b>Aug-16</b>	<b>Sep-16</b>	<b>Oct-16</b>	<b>Nov-16</b>	<b>Dec-16</b>	<b>Jan-17</b>	<b>Feb-17</b>	<b>Mar-17</b>	<b>Apr-17</b>
<i>(Thousand Dollars)</i>													
7800	12,775	12,297	11,251	7,626	819	362	(293)	1,062	10,012	8,701	8,506	8,055	14,722
7850	-	-	-	-	-	-	-	-	-	-	-	-	-
<b>Subtotal Operating</b>	<b>12,775</b>	<b>12,297</b>	<b>11,251</b>	<b>7,626</b>	<b>819</b>	<b>362</b>	<b>(293)</b>	<b>1,062</b>	<b>10,012</b>	<b>8,701</b>	<b>8,506</b>	<b>8,055</b>	<b>14,722</b>
Capital Improvement Projects	2,163	4,096	4,649	5,924	10,284	10,912	10,685	9,470	9,204	9,154	8,598	7,921	8,001
Debt Proceeds	-	-	-	-	-	-	-	-	-	-	-	-	-
<b>Subtotal Capital</b>	<b>2,163</b>	<b>4,096</b>	<b>4,649</b>	<b>5,924</b>	<b>10,284</b>	<b>10,912</b>	<b>10,685</b>	<b>9,470</b>	<b>9,204</b>	<b>9,154</b>	<b>8,598</b>	<b>7,921</b>	<b>8,001</b>
<b>Total Discretionary Funds</b>	<b>14,938</b>	<b>16,393</b>	<b>15,900</b>	<b>13,550</b>	<b>11,103</b>	<b>11,274</b>	<b>10,392</b>	<b>10,532</b>	<b>19,216</b>	<b>17,855</b>	<b>17,104</b>	<b>15,976</b>	<b>22,723</b>
Expansion Fund (Restricted)	200	326	467	-	-	1	-	-	-	-	-	-	-
<b>Total Restricted Funds</b>	<b>200</b>	<b>326</b>	<b>467</b>	<b>-</b>	<b>-</b>	<b>1</b>	<b>-</b>	<b>-</b>	<b>-</b>	<b>-</b>	<b>-</b>	<b>-</b>	<b>-</b>
<b>TOTAL ALL FUNDS</b>	<b>15,138</b>	<b>16,719</b>	<b>16,367</b>	<b>13,550</b>	<b>11,103</b>	<b>11,275</b>	<b>10,392</b>	<b>10,532</b>	<b>19,216</b>	<b>17,855</b>	<b>17,104</b>	<b>15,976</b>	<b>22,723</b>

# DEVELOPMENT WORKLOAD - MONTHLY

CATEGORY	Apr-16	May-16	Jun-16	Jul-16	Aug-16	Sep-16	Oct-16	Nov-16	Dec-16	Jan-17	Feb-17	Mar-17	Apr-17
<b><u>Phone Requests</u></b>													
Maps/Drawings	8	9	5	5	9	5	8	7	4	9	7	4	5
Lateral Permits	-	-	-	-	-	-	-	-	-	-	2	2	-
Policy Questions	6	9	10	7	11	7	3	8	6	6	10	6	4
Development Questions	105	58	75	99	126	56	61	48	47	45	60	63	62
Miscellaneous	7	14	14	14	15	7	4	6	4	8	6	6	8
<b>TOTAL</b>	<b>126</b>	<b>90</b>	<b>104</b>	<b>125</b>	<b>161</b>	<b>75</b>	<b>76</b>	<b>69</b>	<b>61</b>	<b>68</b>	<b>85</b>	<b>81</b>	<b>79</b>
<b><u>Counter Requests</u></b>													
Maps/Drawings	5	-	-	3	7	5	1	-	1	2	1	-	1
Lateral Permits	10	13	12	9	19	19	13	14	7	11	5	11	10
Policy Questions	2	-	2	-	2	2	2	1	-	3	2	1	-
Development Questions	23	2	10	17	30	17	10	8	4	9	13	5	15
Miscellaneous	2	-	3	5	6	4	2	1	2	3	1	-	1
<b>TOTAL</b>	<b>42</b>	<b>15</b>	<b>27</b>	<b>34</b>	<b>64</b>	<b>47</b>	<b>28</b>	<b>24</b>	<b>14</b>	<b>28</b>	<b>22</b>	<b>17</b>	<b>27</b>
<b><u>Initial Request (Referrals)</u></b>	11	17	14	12	22	10	7	21	23	17	11	25	17
<b><u>Connection Permits Issued</u></b>													
Residential Permits	2	6	9	-	1	1	21	-	-	-	1	3	1
Commercial Permits	1	3	2	1	1	2	6	4	3	-	1	3	1
Industrial Permits	-	-	-	-	-	-	-	-	-	-	-	-	-
<b>TOTAL PERMITS</b>	<b>3</b>	<b>9</b>	<b>11</b>	<b>1</b>	<b>2</b>	<b>3</b>	<b>27</b>	<b>4</b>	<b>3</b>	<b>-</b>	<b>2</b>	<b>6</b>	<b>2</b>
Residential Units	2	6	9	-	1	1	21	-	-	-	1	3	1
Commercial Units	1	3	2	1	1	146	14	4	3	-	3	-	1
<b>TOTAL UNITS</b>	<b>3</b>	<b>9</b>	<b>11</b>	<b>1</b>	<b>2</b>	<b>147</b>	<b>35</b>	<b>4</b>	<b>3</b>	<b>-</b>	<b>4</b>	<b>3</b>	<b>2</b>
<b><u>Annexations</u></b>													
Submitted	-	-	1	-	-	1	-	1	-	-	-	-	-
Acreage	-	-	1.50	-	-	1.10	-	27.11	-	-	-	-	-
<b><u>Plans Reviewed</u></b>													
<b><u>Subdivisions/Sites</u></b>													
First Submittal	8	1	5	1	8	4	3	5	2	10	2	4	11
Second Submittal	3	-	1	1	6	4	3	-	2	2	3	7	6
Third Submittal	1	1	1	3	1	7	-	1	3	2	1	5	1
<b><u>Building/Tenant Improvements</u></b>													
First Submittal	21	12	10	3	12	4	8	5	4	10	5	7	4
Second Submittal	8	7	4	6	4	9	3	4	4	5	2	5	4
Third Submittal	1	6	3	5	1	5	3	8	6	2	1	10	3
<b><u>Miscellaneous Plan Reviews</u></b>	-	-	-	-	-	-	-	-	-	1	-	-	-
<b>TOTAL PLANS REVIEWED</b>	<b>42</b>	<b>27</b>	<b>24</b>	<b>19</b>	<b>32</b>	<b>33</b>	<b>20</b>	<b>23</b>	<b>21</b>	<b>32</b>	<b>14</b>	<b>38</b>	<b>29</b>

# INSPECTION WORKLOAD - MONTHLY

CATEGORY	Apr-16	May-16	Jun-16	Jul-16	Aug-16	Sep-16	Oct-16	Nov-16	Dec-16	Jan-17	Feb-17	Mar-17	Apr-17
<b><u>CONSTRUCTION</u></b>													
Locating Sewers	-	-	-	-	-	-	-	-	-	-	-	-	-
Permit Processing	-	-	-	-	-	-	-	-	-	-	-	-	-
Preconstruction Meetings	8	9	7	3	9	-	5	6	5	9	6	6	4
Inspections - Mains	3	2	-	2	1	-	-	10	1	-	-	6	1
Inspections - Manholes	15	8	13	3	-	-	81	27	89	46	16	15	61
Inspections - Laterals	45	29	22	20	20	9	7	37	11	24	17	50	14
Inspections - Cleanouts	42	60	51	28	25	4	29	71	20	42	38	74	25
Inspections - Review Video	4	-	4	-	3	-	2	2	4	1	-	-	-
Demo - Septic Tanks	-	-	-	-	-	-	-	-	-	-	-	-	-
Demo - Buildings	-	-	2	-	1	-	-	-	-	2	-	1	2
Update Record Drawings	-	-	-	-	-	-	-	-	-	-	-	-	-
<b>TOTAL</b>	<b>117</b>	<b>108</b>	<b>99</b>	<b>56</b>	<b>59</b>	<b>13</b>	<b>124</b>	<b>153</b>	<b>130</b>	<b>124</b>	<b>77</b>	<b>152</b>	<b>107</b>
<b><u>MISCELLANEOUS</u></b>													
Meter Readings	-	9	9	10	9	-	9	-	18	100	-	13	24
Washdown Facility Inspections	-	-	-	-	-	-	-	19	-	-	-	-	-
General Customer Assistance	16	10	1	4	4	9	13	-	6	11	11	10	12
City of Napa Water Discharge	-	-	-	-	-	-	-	-	-	-	-	-	-
<b>TOTAL</b>	<b>16</b>	<b>19</b>	<b>10</b>	<b>14</b>	<b>13</b>	<b>9</b>	<b>22</b>	<b>19</b>	<b>24</b>	<b>111</b>	<b>11</b>	<b>23</b>	<b>36</b>
<b><u>SPECIAL PROJECTS</u></b>													
	15	21	22	31	22	7	9	32	2	0	6	16	0

# POLLUTION PREVENTION WORKLOAD - MONTHLY

CATEGORY	Apr-16	May-16	Jun-16	Jul-16	Aug-16	Sep-16	Oct-16	Nov-16	Dec-16	Jan-17	Feb-17	Mar-17	Apr-17
<b><u>Outreach Activities</u></b>													
Plant Tours Conducted	4	4	2	0	0	0	7	8	0	1	4	11	3
Presentations Made	5	2	0	0	1	0	0	3	0	1	2	1	1
<b>Total Outreach Activities</b>	9	6	2	-	1	-	7	11	-	2	6	12	4
<b><u>Inspections Conducted</u></b>													
Food Service Facilities	19	12	-	-	-	1	-	-	37	21	53	35	25
Auto Body & Car Wash	-	-	-	-	-	-	-	-	-	-	-	-	-
Other	1	-	-	-	-	-	-	-	-	-	-	-	-
<b>Total Inspections</b>	20	12	-	-	-	1	-	-	37	21	53	35	25
<b><u>Compliance Issues</u></b>													
NOVs Issued	2	-	2	1	-	-	-	-	2	-	1	4	-
NOEs Issued	1	2	-	-	-	1	-	1	2	-	1	1	-
Non-Compliant-FOG	-	-	-	-	-	-	-	-	-	-	1	1	-
<b>Total Compliance Issues</b>	3	2	2	1	-	1	-	1	4	-	3	6	-
<b><u>Pollution Prevention</u></b>													
Clothes Washer Rebates	18	14	45	-	-	-	-	20	26	28	21	-	-
Toilet Retrofit Rebates	19	6	10	-	11	4	12	8	12	5	4	7	1
Pharmaceuticals Diverted (in lbs)	322	240	243	362	303	386	391	291	63	155	201	71	185

# RECYCLED WATER DELIVERIES - MONTHLY

	Acres	Apr-16	May-16	Jun-16	Jul-16	Aug-16	Sep-16	Oct-16	Nov-16	Dec-16	Jan-17	Feb-17	Mar-17	Apr-17
<b>MONTHLY (MG)</b>														
<b>Water Sold</b>														
Golf Courses	405.0	13.197	37.578	57.273	62.709	63.227	49.600	25.538	6.308	0.002	0.245	-	0.081	2.513
Cemeteries	5.0	0.015	0.447	0.709	0.931	0.754	1.225	0.328	0.010	0.000	-	-	-	-
Parks	18.5	0.036	0.725	1.078	1.299	1.172	0.741	0.205	-	-	-	-	0.002	0.001
Schools	21.0	0.360	1.528	2.675	2.181	2.120	1.497	0.630	0.014	0.006	0.005	-	0.005	0.013
Commerical	167.6	6.404	11.038	17.061	14.878	17.259	15.070	9.563	3.457	0.490	1.191	0.404	0.501	2.493
Vineyards	564.0	5.268	2.034	13.413	15.693	21.832	17.609	6.065	3.528	0.302	0.194	0.063	0.101	7.119
Trucked Water	175.0	0.098	0.064	0.135	0.232	0.458	0.135	0.124	0.008	0.188	0.009	0.002	0.015	0.018
<b>Subtotal Sales</b>	<b>1,356.1</b>	<b>25.378</b>	<b>53.413</b>	<b>92.343</b>	<b>97.923</b>	<b>106.821</b>	<b>85.877</b>	<b>42.454</b>	<b>13.326</b>	<b>0.988</b>	<b>1.644</b>	<b>0.469</b>	<b>0.705</b>	<b>12.156</b>
<b>District Use</b>														
Jameson	330.0	-	-	1.481	5.414	12.456	20.935	12.608	-	-	0.089	-	0.087	0.032
Somky	213.0	-	-	2.950	16.037	21.318	22.108	10.000	0.001	-	-	-	0.002	-
Fagundes/Airport	50.5	-	-	-	-	-	-	-	-	-	-	-	-	-
<b>Subtotal District</b>	<b>593.5</b>	<b>-</b>	<b>-</b>	<b>4.431</b>	<b>21.451</b>	<b>33.774</b>	<b>43.043</b>	<b>22.609</b>	<b>0.001</b>	<b>-</b>	<b>0.089</b>	<b>-</b>	<b>0.089</b>	<b>0.032</b>
<b>TOTAL DELIVERED</b>	<b>1,949.6</b>	<b>25.378</b>	<b>53.413</b>	<b>96.773</b>	<b>119.374</b>	<b>140.594</b>	<b>128.920</b>	<b>65.062</b>	<b>13.327</b>	<b>0.988</b>	<b>1.733</b>	<b>0.469</b>	<b>0.794</b>	<b>12.188</b>
<b>ANNUAL (AF)</b>														
<b>Water Sold</b>														
Golf Courses	405.0	899	840	869	891	920	946	960	971	968	969	969	969	936
Cemeteries	5.0	13	13	13	13	13	15	14	14	14	14	14	14	14
Parks	18.5	16	16	17	17	17	17	16	16	16	16	16	16	16
Schools	21.0	35	35	37	38	38	37	36	34	34	34	34	34	33
Commerical	167.6	270	276	294	293	302	308	304	301	301	304	305	299	287
Vineyards	564.0	64	68	103	149	215	268	285	265	266	266	265	264	270
Trucked Water	175.0	6	6	5	5	6	5	4	4	5	5	5	5	4
<b>Subtotal Sales</b>	<b>1,356.1</b>	<b>1,303</b>	<b>1,254</b>	<b>1,339</b>	<b>1,407</b>	<b>1,512</b>	<b>1,596</b>	<b>1,619</b>	<b>1,605</b>	<b>1,603</b>	<b>1,609</b>	<b>1,607</b>	<b>1,600</b>	<b>1,559</b>
<b>District Use</b>														
Jameson	330.0	103	103	107	124	153	167	163	163	163	163	163	163	163
Somky	213.0	291	221	195	208	230	223	222	222	222	222	222	222	222
Fagundes/Airport	50.5	-	-	-	-	-	-	-	-	-	-	-	-	-
<b>Subtotal District</b>	<b>593.5</b>	<b>394</b>	<b>324</b>	<b>302</b>	<b>332</b>	<b>383</b>	<b>390</b>	<b>385</b>	<b>385</b>	<b>385</b>	<b>385</b>	<b>385</b>	<b>385</b>	<b>385</b>
<b>TOTAL DELIVERED</b>	<b>1,949.6</b>	<b>1,697</b>	<b>1,578</b>	<b>1,641</b>	<b>1,739</b>	<b>1,894</b>	<b>1,986</b>	<b>2,004</b>	<b>1,990</b>	<b>1,988</b>	<b>1,994</b>	<b>1,992</b>	<b>1,985</b>	<b>1,945</b>

# BIOSOLIDS HANDLING - MONTHLY

Site	Apr-16	May-16	Jun-16	Jul-16	Aug-16	Sep-16	Oct-16	Nov-16	Dec-16	Jan-17	Feb-17	Mar-17	Apr-17
<u>Land Applied by NSD</u>													
Somky													
Airport/Fagundes													
Jameson Canyon	-	139	210	178	217	65	97	35	-	-	-	-	-
Subtotal by NSD	-	139	210	178	217	65	97	35	-	-	-	-	-
<u>Land Applied by Contractor</u>													
Somky													
Airport/Fagundes													
Jameson Canyon													
Subtotal by Contractor	-	-	-	-	-	-	-	-	-	-	-	-	-
<b>Total Land Applied</b>	<b>-</b>	<b>139</b>	<b>210</b>	<b>178</b>	<b>217</b>	<b>65</b>	<b>97</b>	<b>35</b>	<b>-</b>	<b>-</b>	<b>-</b>	<b>-</b>	<b>-</b>
<b>Off Site (Contractor)</b>													
<hr/>													
<b>Total (tons)</b>	<b>-</b>	<b>139</b>	<b>210</b>	<b>178</b>	<b>217</b>	<b>65</b>	<b>97</b>	<b>35</b>	<b>-</b>	<b>-</b>	<b>-</b>	<b>-</b>	<b>-</b>



# COLLECTION SYSTEM MAINTENANCE - MONTHLY

CATEGORY	Apr-16	May-16	Jun-16	Jul-16	Aug-16	Sep-16	Oct-16	Nov-16	Dec-16	Jan-17	Feb-17	Mar-17	Apr-17
<b><u>Plugups</u></b>													
<b>Total Calls</b>	41	45	33	48	52	48	56	68	84	75	51	61	39
Business Hours	31	30	22	27	35	35	34	38	54	49	30	43	25
After Hours	10	15	11	21	17	13	22	30	30	26	21	18	14
District's	11	14	8	13	17	18	12	27	28	27	15	21	10
Property Owner's	30	31	25	35	35	30	44	41	56	48	36	40	29
Plugged Main Lines		1			1		1	2	2	3			
Run Lateral w/Eel	129	178	114	111	85	111	83	94	65	113	110	215	116
<b><u>Cleaning (feet of sewer)</u></b>													
Vactor #1	65,231	46,352	57,690	43,988	61,502	47,869	40,711	32,046	12,220	31,694	30,016	52,800	10,888
Vactor #2	325	9,687	4,002	6,288		2,184	14,730	1,512	23,277	18,222	18,062	34,405	53,959
Hydro													
Rodder													
<b>Total (feet)</b>	<b>65,556</b>	<b>56,039</b>	<b>61,692</b>	<b>50,277</b>	<b>61,502</b>	<b>50,053</b>	<b>55,442</b>	<b>33,557</b>	<b>35,497</b>	<b>49,915</b>	<b>48,077</b>	<b>87,205</b>	<b>64,846</b>
<b>Cleaning Days</b>	<b>19</b>	<b>19</b>	<b>19</b>	<b>18</b>	<b>19</b>	<b>16</b>	<b>17</b>	<b>16</b>	<b>15</b>	<b>16</b>	<b>18</b>	<b>25</b>	<b>22</b>
Vactor #1	18	17	17	15	19	15	13	15	7	9	11	14	5
Vactor #2	1	2	2	3		1	4	1	8	7	7	11	17
Hydro													
Rodder													
<b>Feet/day</b>	<b>3,450</b>	<b>2,950</b>	<b>3,250</b>	<b>2,800</b>	<b>3,250</b>	<b>3,150</b>	<b>3,250</b>	<b>2,100</b>	<b>2,350</b>	<b>3,100</b>	<b>2,650</b>	<b>3,500</b>	<b>2,950</b>
Vactor #1	3,600	2,750	3,400	2,950	3,250	3,200	3,150	2,150	1,750	3,500	2,750	3,750	2,200
Vactor #2	350	4,850	2,000	2,100		2,200	3,700	1,500	2,900	2,600	2,600	3,150	3,150
Hydro													
Rodder													
<b><u>Video Inspections</u></b>													
Mains (feet)	8,670	17,352	15,115	3,878	15,885	6,453	10,131	6,826	13,141	5,981	6,398	17,209	15,580
Laterals (each)	181	225	152	183	140	161	174	182	191	203	175	324	249
<b><u>Construction (each)</u></b>													
Cleanouts	17	7	10	7	3	16	8	10	6	4	10	16	4
Laterals	4	3	5	4			10	5		1		4	3
Mains	2						3						
Manholes							1					1	
Other		39											
<b><u>USA Markings</u></b>													
Regular (w/in 2 days)	270	319	225	244	326	252	215	214	160	151	186	254	305
Emergency (w/in 2 hours)	5	-	6	14	8	10	6	4	18	7	7	13	8

## WASTEWATER PLANT OPERATIONS DATA - MONTHLY

[illegible]

# WASTEWATER PLANT MAINTENANCE and LABORATORY DATA - MONTHLY

CATEGORY	Apr-16	May-16	Jun-16	Jul-16	Aug-16	Sep-16	Oct-16	Nov-16	Dec-16	Jan-17	Feb-17	Mar-17	Apr-17
<b><u>Scheduled</u></b>													
Old	77	66	53	55	37	39	50	57	48	75	49	43	40
New	93	70	105	80	100	75	91	88	80	86	61	106	91
Completed	104	83	103	98	98	64	84	97	53	112	67	109	56
<b>New Balance</b>	<b>66</b>	<b>53</b>	<b>55</b>	<b>37</b>	<b>39</b>	<b>50</b>	<b>57</b>	<b>48</b>	<b>75</b>	<b>49</b>	<b>43</b>	<b>40</b>	<b>75</b>
<b><u>Unscheduled</u></b>													
Old	88	64	71	74	71	62	62	56	57	57	49	48	48
New	31	52	44	37	28	33	25	33	31	30	27	21	24
Completed	55	45	41	40	37	33	31	32	31	38	28	21	11
<b>New Balance</b>	<b>64</b>	<b>71</b>	<b>74</b>	<b>71</b>	<b>62</b>	<b>62</b>	<b>56</b>	<b>57</b>	<b>57</b>	<b>49</b>	<b>48</b>	<b>48</b>	<b>61</b>
<b><u>Total Work Orders</u></b>													
Old	165	130	124	129	108	101	112	113	105	132	98	91	88
New	124	122	149	116	128	108	116	121	111	116	88	127	115
Completed	160	128	144	138	136	96	115	129	84	151	95	130	67
<b>New Balance</b>	<b>130</b>	<b>124</b>	<b>129</b>	<b>108</b>	<b>101</b>	<b>112</b>	<b>113</b>	<b>105</b>	<b>132</b>	<b>98</b>	<b>91</b>	<b>88</b>	<b>136</b>
<b><u>LAB ANALYSES</u></b>													
<b><u>Sample Type</u></b>													
Regulatory	392	130	158	193	179	193	204	168	175	192	214	210	218
Process Control	1,235	778	729	744	907	739	766	1,315	1,209	1,189	1,051	1,370	1,167
Special Request	5	320	11	207	93	-	19	39	40	3	1	1	-
Quality Control/Assurance	349	209	5	32	5	5	50	302	299	303	272	301	497
<b>TOTAL</b>	<b>1,981</b>	<b>1,437</b>	<b>903</b>	<b>1,176</b>	<b>1,184</b>	<b>937</b>	<b>1,039</b>	<b>1,824</b>	<b>1,723</b>	<b>1,687</b>	<b>1,538</b>	<b>1,882</b>	<b>1,882</b>

**Summary of NSD Capital Project Status  
through 04-30-17**

Proj #	Description	FY 16-17 Budget	FY 15-16 Carryovers	Adj.	Final FY 16-17 Budget	Encumbrance	Costs Paid to Date	Budget Remaining	% Budget Expended
<b><u>COLLECTION SYSTEM</u></b>									
13701	Main Line Sewer Rehab	88,700		(60,000)	28,700	-	5,226	23,474	18%
13702	Manhole Raising/Rehab	198,900		60,000	258,900	-	236,205	22,695	91%
13703	Lateral Replacement/Rehab	72,000			72,000	-	51,024	20,976	71%
13704	Cleanouts Installation/Rehab	87,000			87,000	6,388	47,379	33,233	54%
13705	I&I Reduction Program	200,000			200,000	0	130,446	69,554	65%
14703	Browns Valley Rd & First St	2,800,000	813,800		3,613,800	369,782	431,401	2,812,616	12%
15703	Sarco Crk PL Rplcmnt/CalTRANS	1,050,000	(34,250)	98,000	1,113,750	116,052	993,650	4,048	89%
15721	ACP CIPP Lining Project #1	-	330,000		330,000	-	311,543	18,458	94%
16701	Basin L - I&I Reduction #5	1,400,000	(490,400)	(165,500)	744,100	-	715,956	28,144	96%
16718	NN Siphon Vault Cover Replacement	-	5,000		5,000	-	1	4,999	0%
16723	Milliken Creek Sewer Repair	-	150,000	150,000	300,000	4,880	268,955	26,165	90%
17701	ACP CIPP Lining Project #2	350,000		(350,000)	-	-	-	-	-
17702	Upper Lateral Rehab - Basin L (Pilot #2)	5,000			5,000	-	3,645	1,355	73%
17703	Manhole Rehab - Nipak	90,000		3,000	93,000	-	92,089	911	99%
17704	Infltrtn Rehab - SSMH/PL (CI-)	400,000		(300,000)	100,000	-	26,071	73,929	26%
17705	Soscol Ave (8th to Oil Co Rd)	500,000			500,000	28,465	54,588	416,947	11%
17706	Rehab - Ranch De Los Robles	400,000		(400,000)	-	-	-	-	-
17707	66-inch Trunk CCTV Inspection	150,000			150,000	-	420	149,580	0%
17708	Basin G - I&I Reduction #1	1,200,000		1,180,000	2,380,000	2,000,000	39,226	340,774	2%
17734	Homewood/Westwood I/I Reduction	-		200,000	200,000	-	19,004	180,996	10%
<b><u>COLLECTION SYSTEM - EQUIPMENT</u></b>									
17709	Eel Replacment 1	5,400		100	5,500	-	5,454	46	99%
17710	Vehicle 510 - Water Truck	207,900		(18,100)	189,800	-	186,160	3,640	98%
<b><u>LIFT STATIONS</u></b>									
17711	West Napa PS - Rehab	1,750,000			1,750,000	-	472	1,749,528	0%
<b><u>TREATMENT</u></b>									
16708	Algae to Digester with Thermal Study	-	50,450		50,450	22,913	3,617	23,920	7%
17712	Headworks/Primary - Odor Ctrl	20,000		5,000	25,000	-	17,015	7,985	68%
<b><u>TREATMENT - EQUIPMENT</u></b>									
13741	Secondary PS Pump Rebuild (3)	37,500	7,200	7,500	52,200	-	52,081	119	100%
13743	Risidual Analyzers (Deox) Replacements	-		20,000	20,000	-	16,484	3,516	82%
14720	Belt Press Polymer Skid Replacement	-	55,700		55,700	-	47,724	7,976	86%
15711	Rotork Actuator Replacement	-	52,750	88,700	141,450	17,000	115,607	8,843	82%
15712	Rehab Pond 1 Storage Structure	25,000	5,000	(30,000)	-	-	-	-	-
15713	Aeration Basin Instrmntn/Ctrl	1,200,000	(126,000)	500,000	1,574,000	14,529	1,449,469	110,002	92%
16713	Buried Metallic Piping (eval/rehab)	40,000	10,000	(8,200)	41,800	-	-	41,800	-
16714	High Voltage System Repairs	-	30,000	50,000	80,000	11,375	4,995	63,630	6%
16715	Cogen Bottom End Overhaul	75,000	150,000		225,000	218,378	-	6,622	-
17713	Secondary PS VFD Rplcmnt (3)	53,600			53,600	-	2,447	51,153	5%

**Summary of NSD Capital Project Status  
through 04-30-17**

Proj #	Description	FY 16-17 Budget	FY 15-16 Carryovers	Adj.	Final FY 16-17 Budget	Encumbrance	Costs Paid to Date	Budget Remaining	% Budget Expended
17714	WWTP MP - 3W Sys Imprvmnts	60,000			60,000	-	1,676	58,324	3%
17715	Turbidimeters (7) Tertiary Rplcmnts	11,800		11,200	23,000	14,041	7,575	1,384	33%
17716	FOG - Strain Press	200,000			200,000	-	167,472	32,528	84%
17717	Energy Audit - Odor Control VFD	51,700			51,700	-	9,741	41,959	19%
17718	Energy Audit - LED Pole/Arm Mounted Fixtures	78,100		50,000	128,100	82,186	4,778	41,136	4%
17719	Lab - Smpler 4700 - Pretreatment	7,500		(800)	6,700	-	-	6,700	-
17720	Lab - Smpler 4700 - Pretreatment	7,500			7,500	-	-	7,500	-
17721	Lab - Chlorophyll A Analyzer - Pond Water	5,400		800	6,200	-	6,105	95	98%
17722	Main - Stationary Gas Detector Replacment Ph 2	140,000		35,000	175,000	7,796	151,265	15,939	86%
17723	Main - Rotork Actuator Replacment	88,700		(88,700)	-	-	-	-	-
17724	Main - Primary Clarifier Exhaust Fan Replacment	5,000		(5,000)	-	-	-	-	-
17725	Main - Sump #3 Modification	10,000			10,000	-	-	10,000	-
	<b>TREATMENT - STRUCTURES</b>								
13724	IPS Expansion	-	38,700		38,700	6,483	8,789	23,429	23%
17726	Headworks Equipment Rehab/Replacment	10,000		100,000	110,000	5,344	67,248	37,408	61%
17727	Roof Replacement - Digester 2nd Floor	125,000		(10,000)	115,000	-	110,713	4,287	96%
17728	Roof Replacement - AB/Blower Building	40,000		5,000	45,000	-	43,162	1,838	96%
17729	DAF Access Opening	20,000			20,000	-	-	20,000	-
	<b>SCADA</b>								
	<b>RECYCLING - DISTRICT</b>								
15717	Isolation Valve on Kirkland Line (Devlin Rd)	49,200	14,400	10,000	73,600	-	66,508	7,092	90%
16716	Line Recycled Water Reservoir	1,320,000	(18,400)	(1,000,000)	301,600	8,897	119,919	172,784	40%
17730	Jameson Solids Pad Dump Bay	15,000		(15,000)	-	-	-	-	-
17731	Jameson Office Trailer Replacment	25,000			25,000	-	19,405	5,595	78%
17732	Vehicle 710 - 8830 Tractor	200,000		(30,000)	170,000	-	165,932	4,068	98%
17733	Vehicle 172 - Ford F150	28,000		5,000	33,000	-	30,900	2,100	94%
	<b>RECYCLING - EXPANSION</b>								
13727	North Bay Wate Reuse Project	845,000			845,000	-	411,478	433,522	49%
14726	MST RW Pipeline Construction	-	500,000		500,000	303,461	18,682	177,857	4%
14727	Split N/S Lines, surge protection	-	50,000		50,000	10,615	19,506	19,879	39%
15718	LCWD Recycled Water Pipeline - Construction	-	500,000	(98,000)	402,000	307,461	52,567	41,973	13%
16722	MST RW Pipeline Extension	1,200,000	(700)		1,199,300	90,798	299,582	808,920	25%
	<b>OTHER</b>								
13729	Development Technical Support	231,800			231,800	-	218,952	12,848	94%
16717	Admin/Engineering Bldg - Acoustic Improvements	-	10,000		10,000	-	-	10,000	-
<b>GRAND TOTAL ALL PROJECTS</b>		<b>\$17,180,700</b>	<b>\$2,103,250</b>	<b>-</b>	<b>\$19,283,950</b>	<b>\$3,646,844</b>	<b>\$7,330,309</b>	<b>\$8,306,799</b>	<b>38%</b>