

Chloride Update

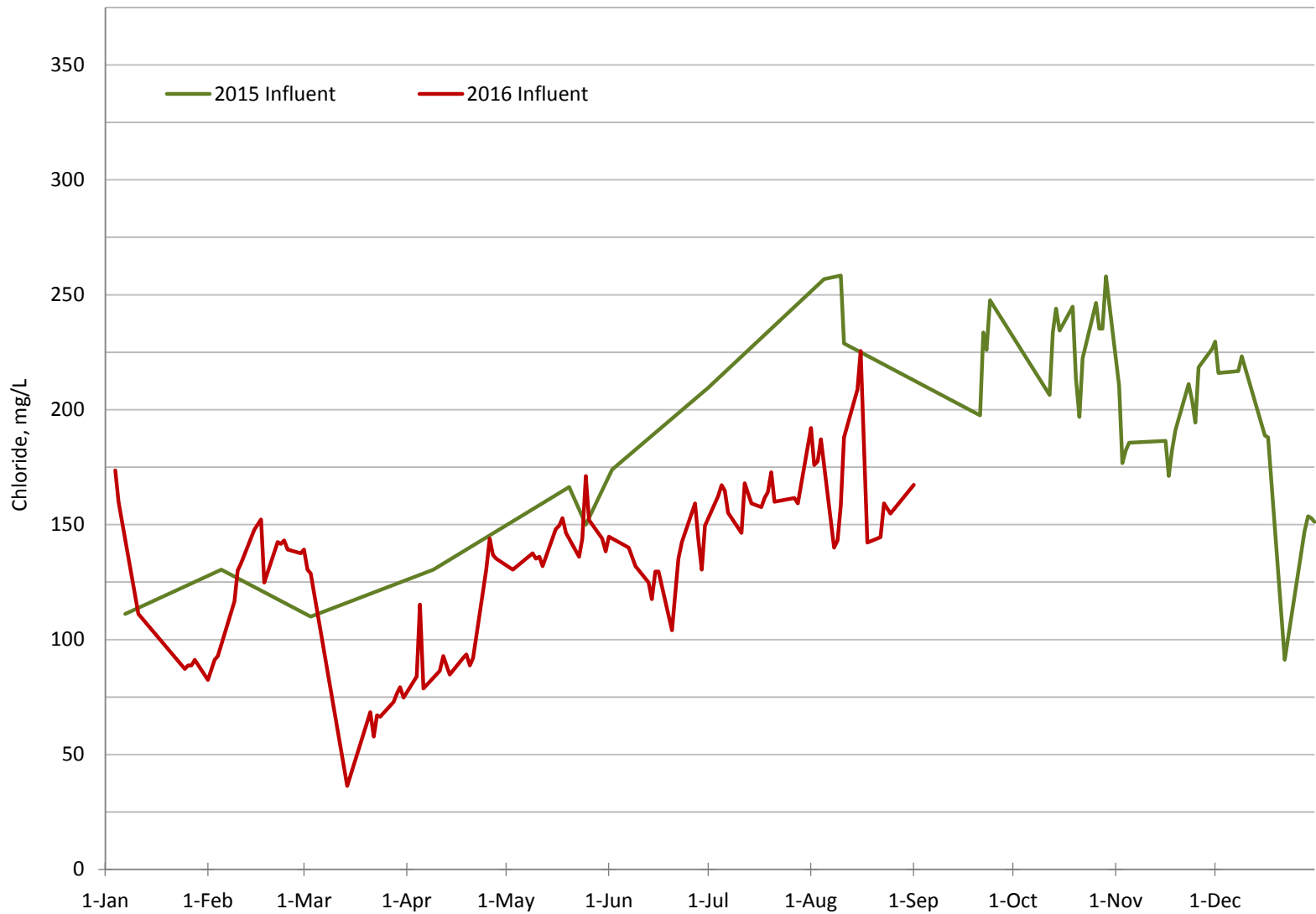
September 21, 2016



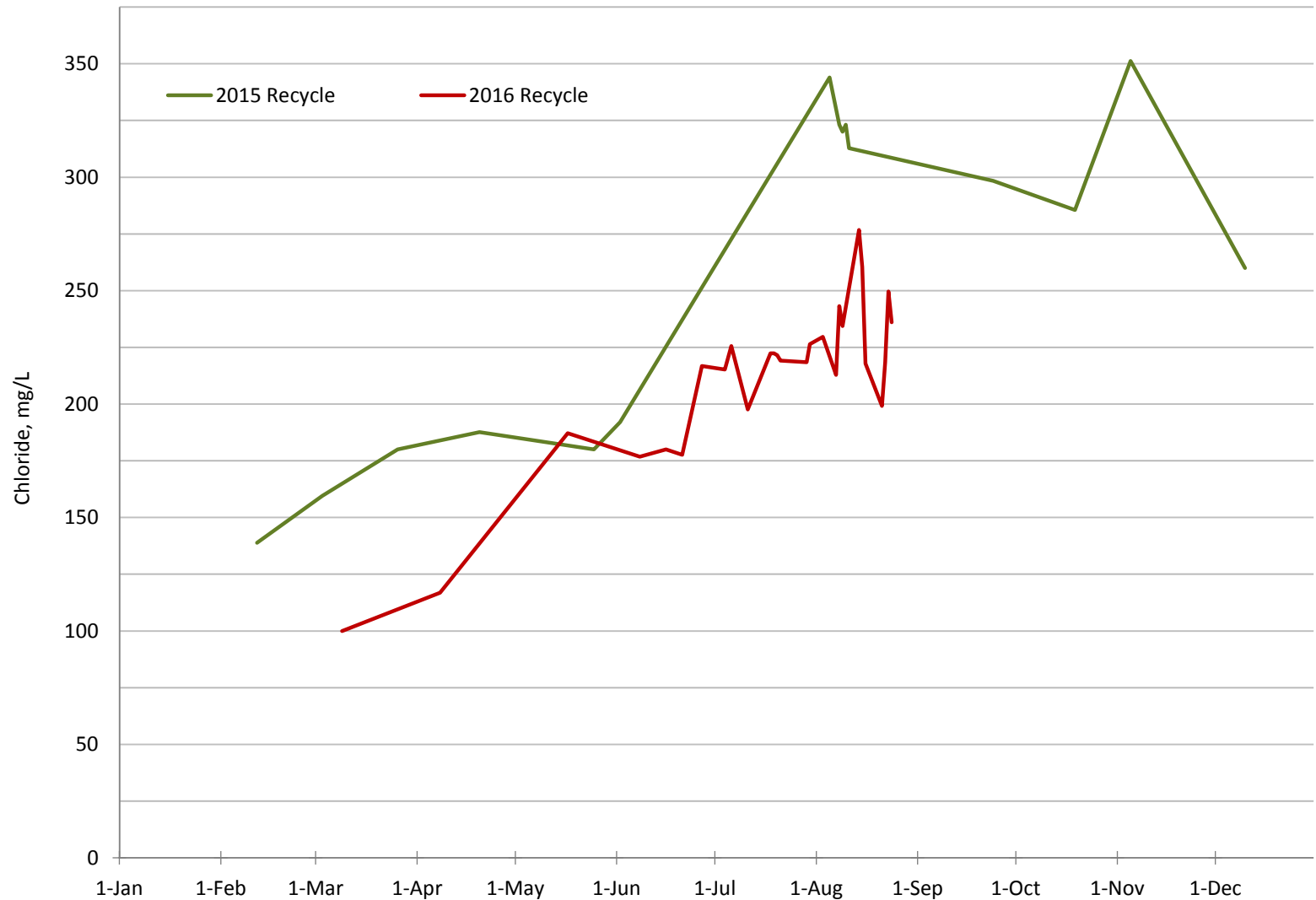
Outline

- Current chloride levels
- Work completed since last update
- Status of conductivity loggers
- Next steps

Current Chloride Levels – Plant Influent



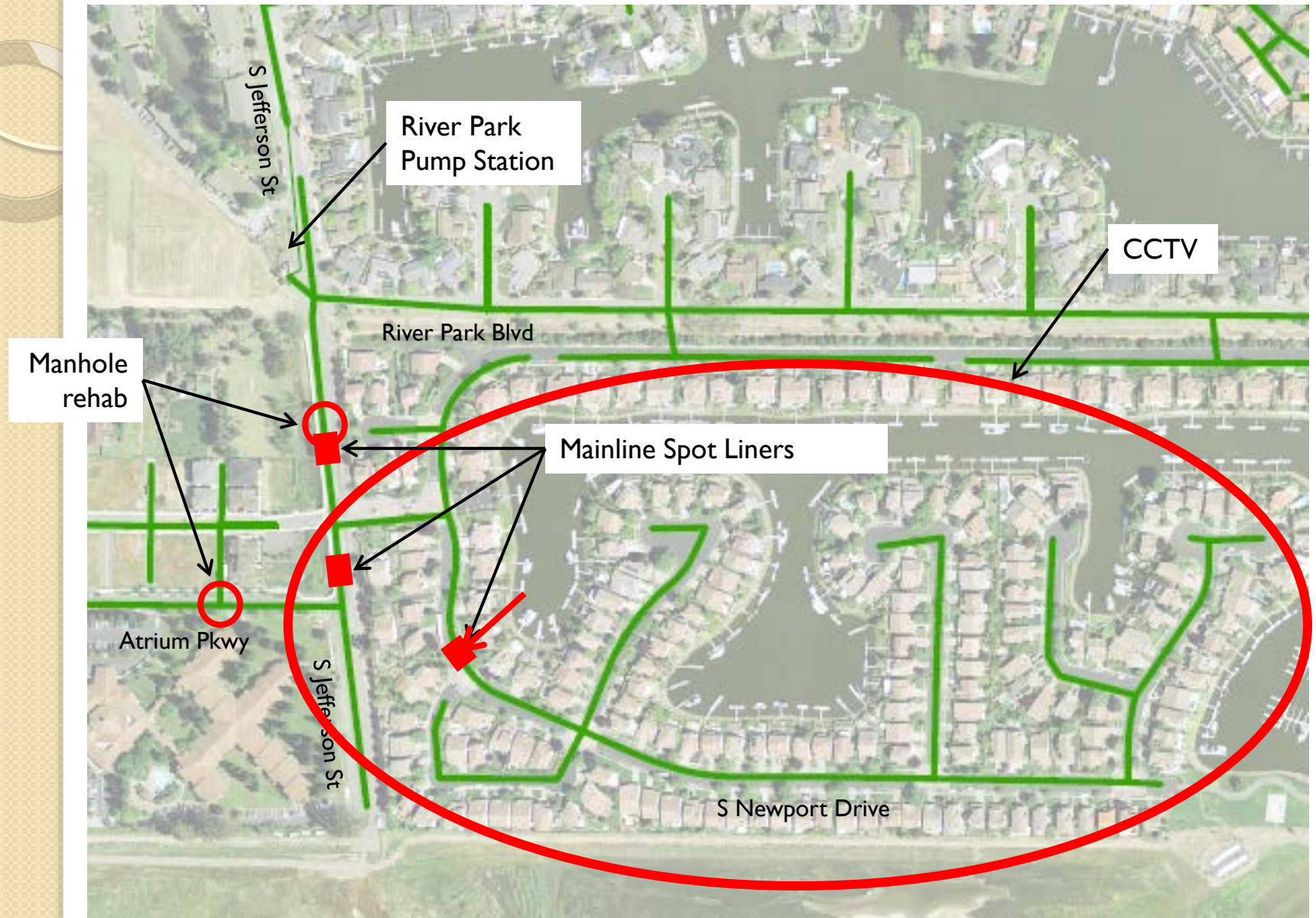
Current Chloride Levels – Recycle Effluent



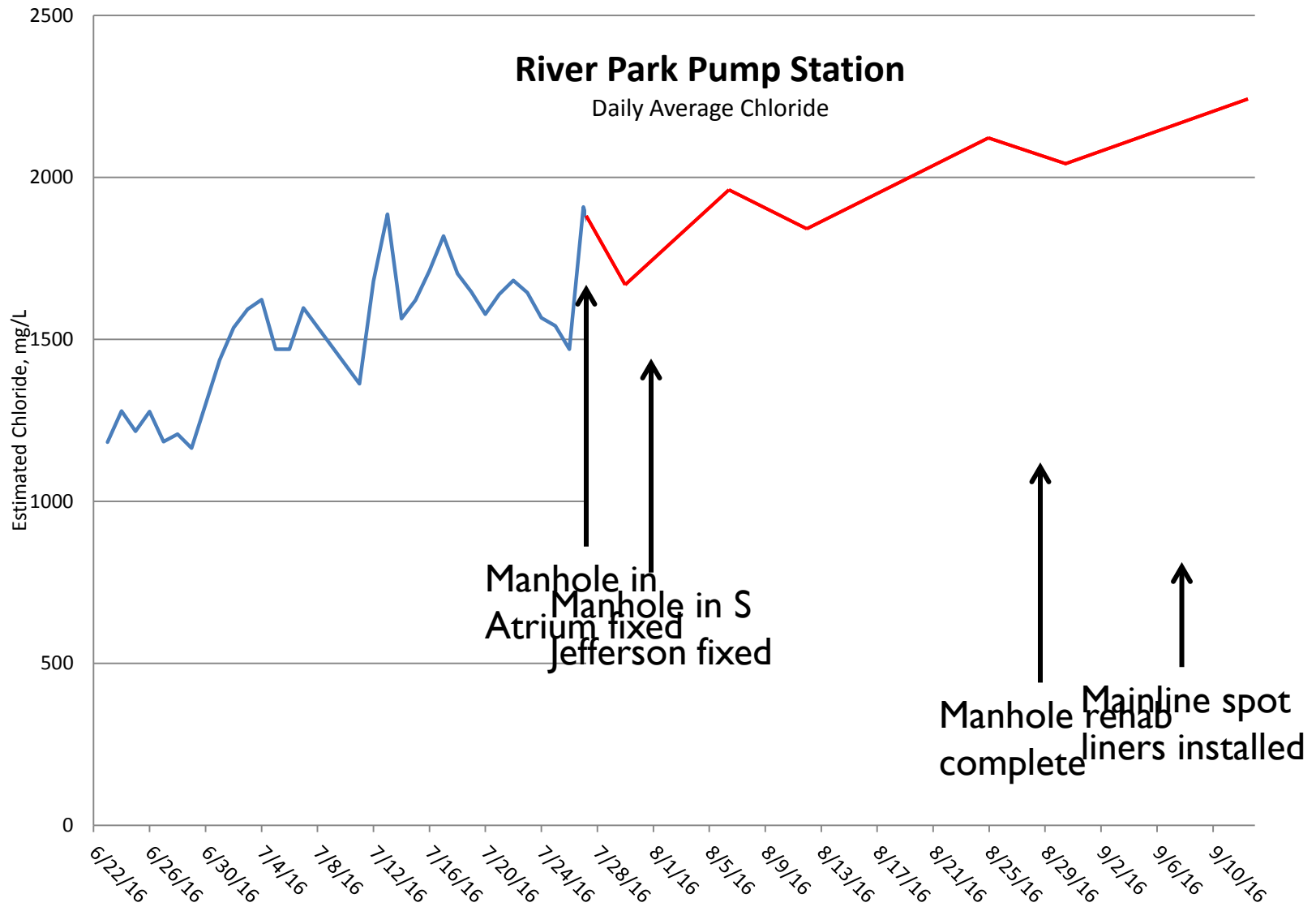
Work Completed Since Last Update

- Manhole rehabilitations
 - Atrium Parkway
 - South Jefferson Street
- CCTV inspection
 - Napa Yacht Club
- Mainline spot liners
 - South Jefferson Street (2)
 - South Newport Drive
 - Kaiser Road

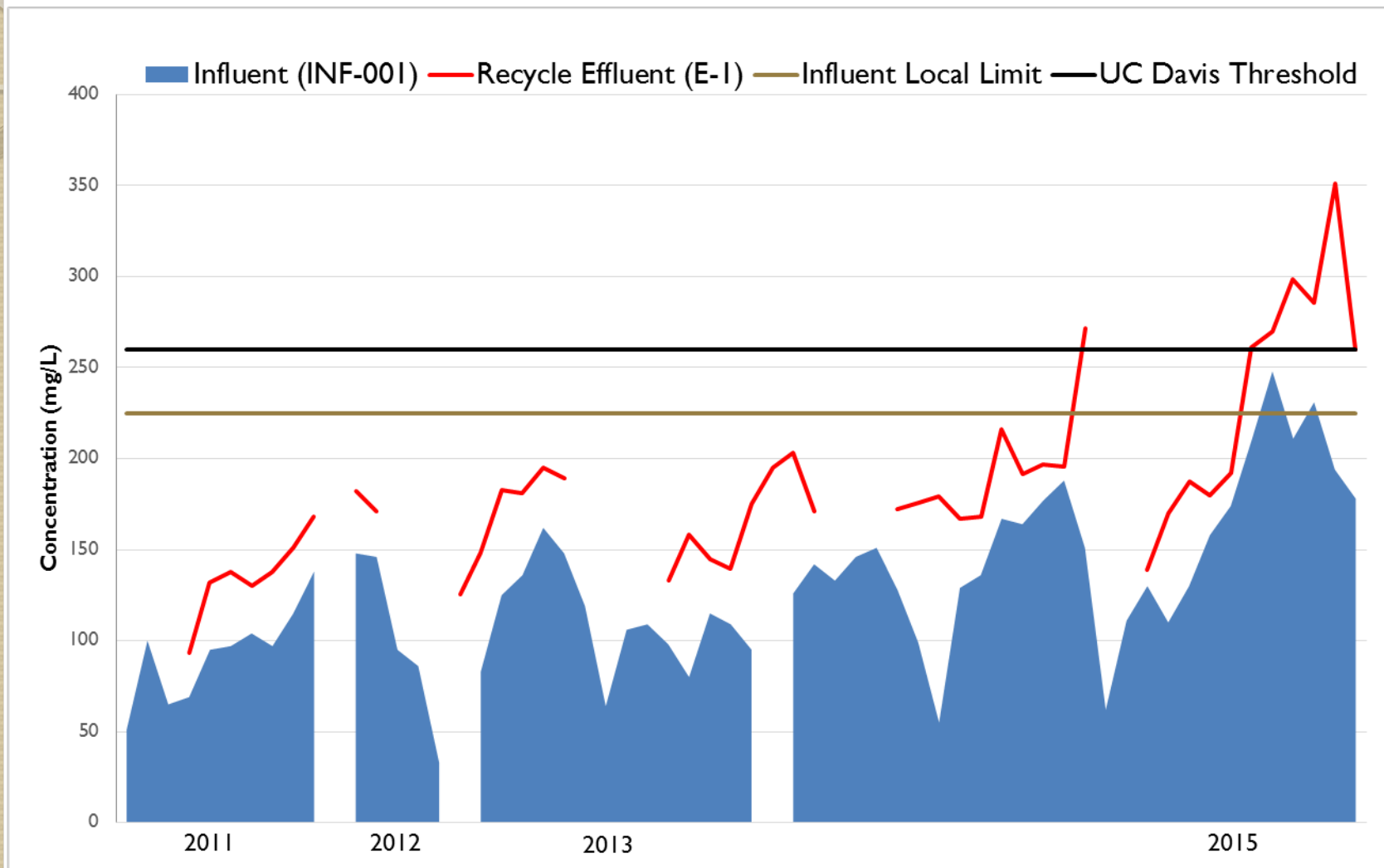
Work Completed Since Last Update



Chloride at River Park Pump Station



NSD Chloride Concentrations 2011-2015

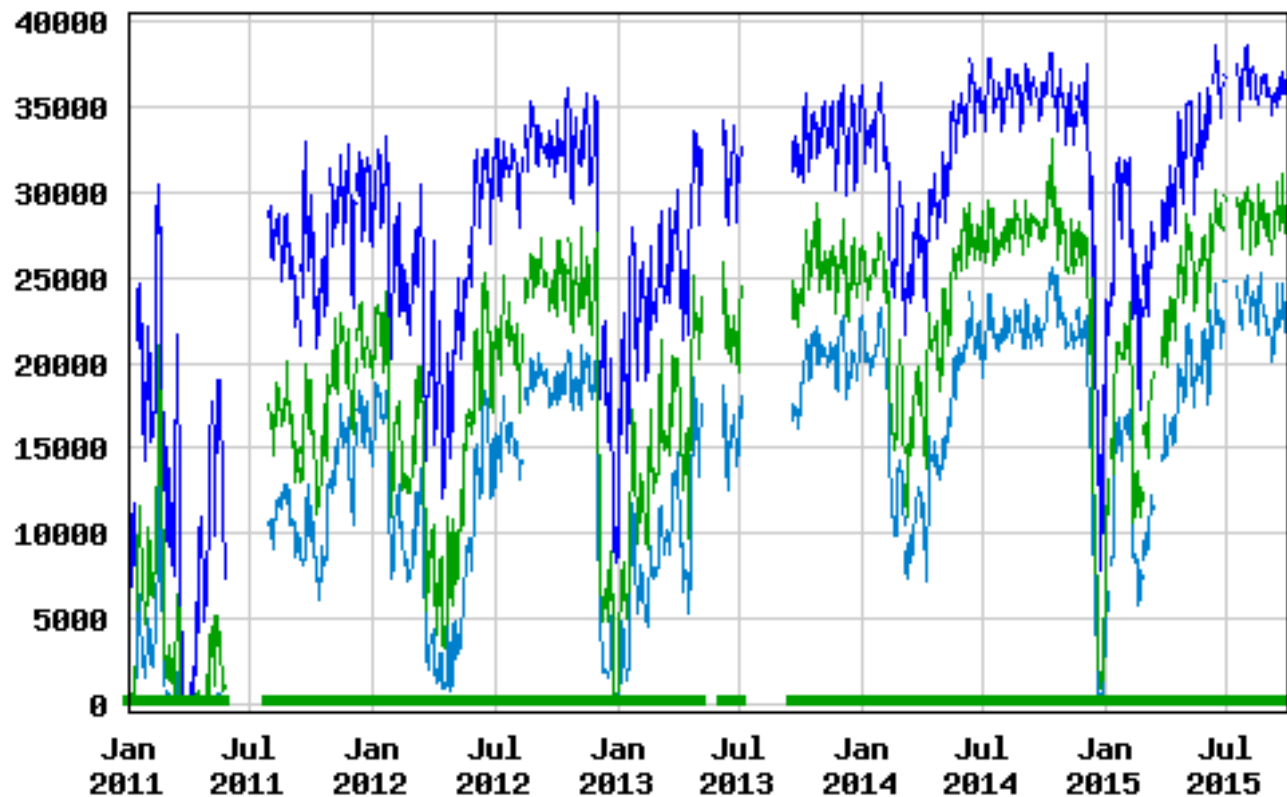


Suisun Bay Conductivity 2011-2015



USGS 11455780 SUISUN BAY A BENICIA BRIDGE NR BENICIA CA

DAILY Specific conductance, water,
unfiltered, microsiemens per centimeter
at 25 degrees Celsius, UPPER - 71 FT
FROM BED

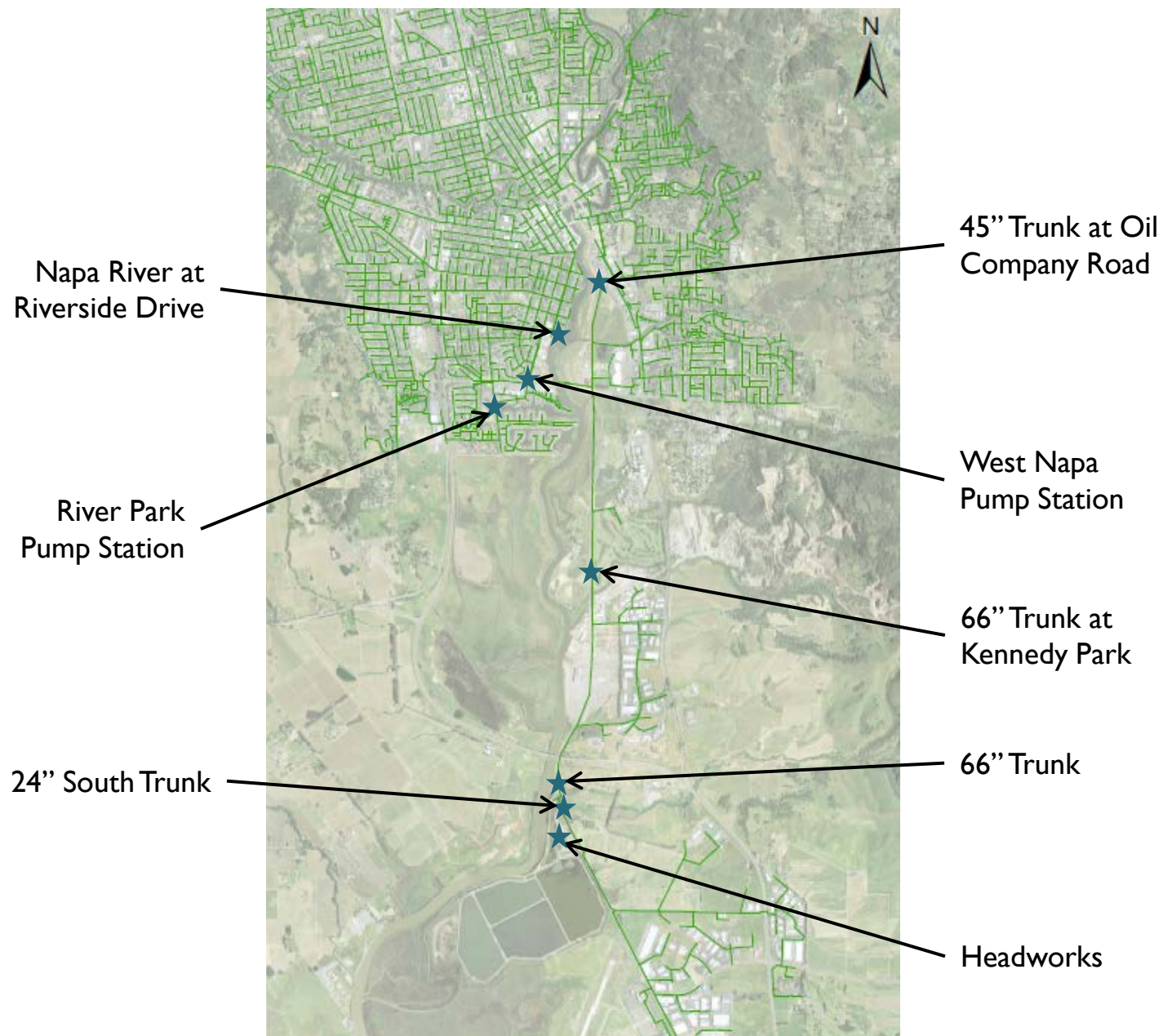


— Daily maximum specific conductance — Daily median specific conduct.
— Daily minimum specific conductance — Period of approved data

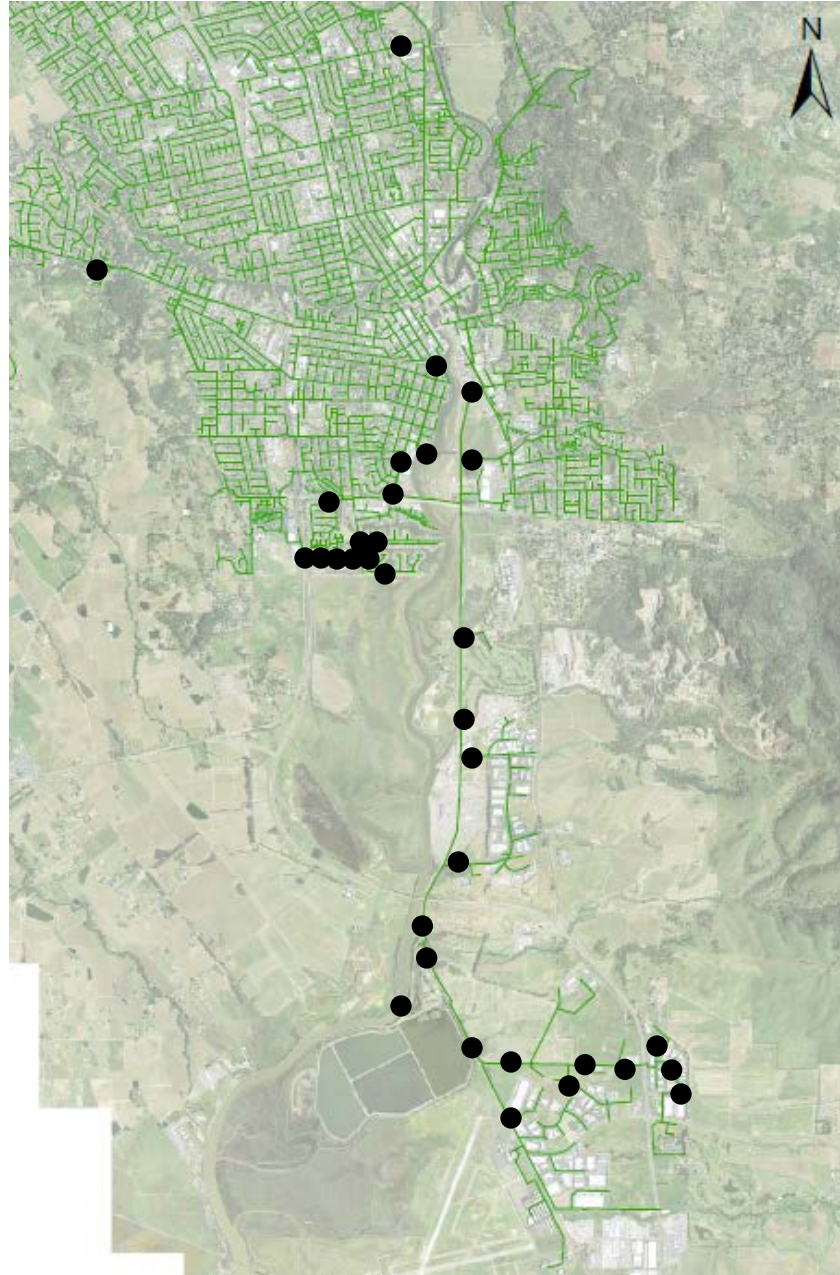
Mainline Spot Liner – South Newport Drive



Fixed Monitoring Locations



All Monitoring Locations to date

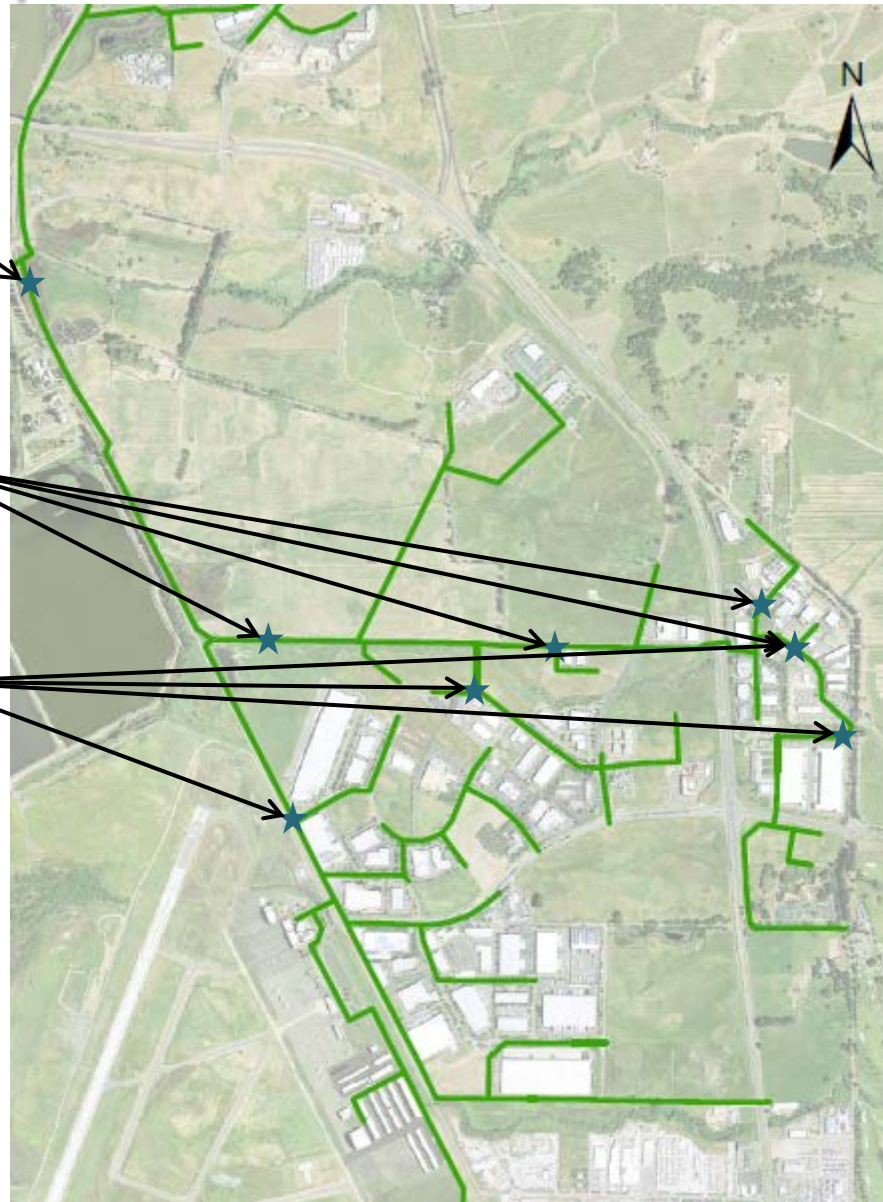


24" Trunk Upstream Trace

24" Trunk fixed
monitoring location

Temporary
Monitoring
Location

Temporary
Monitoring
Location



Looking Ahead

- Continue CCTV inspections
- Continue monitoring conductivity system-wide through October/November
- Continue providing chloride updates to customers
- Continue using the “roving” probes to pinpoint sources of chloride
- Identify and implement additional projects based on findings