



# **Napa Sanitation District**

## **General Manager's Report**

### **for**

### **July, 2016**

#### Contents:

- a. Transmittal Memo
- b. Budget Status and Cash Summary
- c. Key Information Graphs – Fund Balances, Treatment Plant and Collection
- d. Fund Balances
- e. Development Processing
- f. Construction Inspection
- g. Pollution Prevention
- h. Recycled Water Deliveries
- i. Biosolids Handling
- j. Collection System Maintenance
- k. Treatment Plant Operations
- l. Treatment Plant Maintenance & Laboratory
- m. Capital Project Expenditure Summary



## NAPA SANITATION DISTRICT

## General Manager's Report

*Dedicated to Preserving the Napa River for Generations to Come*

---

**DATE:** September 7, 2016

**FROM:** Timothy B. Healy, General Manager

**SUBJECT:** General Manager's Report for July, 2016

### **REGULATORY COMPLIANCE:**

Collection System Compliance:	0 Category 1 SSO's, 0 Category 2 SSO's and 2 Category 3 SSO's
NPDES Permit (WWTP) Compliance:	Full compliance with all regulations
Air Quality Compliance:	Full compliance with all regulations
Recycled Water Compliance:	Full compliance with all regulations
Biosolids Compliance:	Full compliance with all regulations
Significant Comments:	None

### **FISCAL STATUS:**

Period Covered:	July 1, 2016 – July 31, 2016
Percent Fiscal Year:	8.3%
Operating Expenditures to date:	14.1%
Historical Expenditures to date:	19.2%
Significant Comments:	Typically the "Operating Expenditures to date" would include the first debt service payment. This year, instead of paying it on the last day in July, the payment was made in August, which contributes to the lower than "Historical Expenditures to date".

### **PERSONNEL:**

Significant events for the month of July, 2016 in the Human Resources Department:

New Hires:	None
Separations:	Troy Brown, Collection System Worker II, resignation
Promotions:	None
Recruitment Activities:	Offer letters to three applicants replacing two Collection System Worker vacancies and one of the two newly approved positions
Injuries:	Jaden Foust – right bicep strain, no lost time

*Summaries of Operational Highlights are on following pages.*

**COLLECTIONS:**

Significant events for the month of July 2016 in Collection System Maintenance include:

- The District had 0 Category 1 Sanitary Sewer Overflows (SSO's), 0 Category 2 SSO's and 2 Category 3 SSO's during the month. (A Category 1 is defined as an SSO that reached a drainage channel and/or surface water or; an SSO that reached a storm drain pipe that was not fully recovered and returned to the sanitary sewer system. A Category 2 is defined as an SSO that is equal to or greater than 1,000 gallons that did not reach a surface water. A Category 3 is defined as an SSO that is less than 1,000 gallons that did not reach a surface water. These are usually minor overflows of less than 10 gallons from cleanouts on District laterals that can be cleaned up by the crews.)
- The repair crew installed 5 cleanouts and repaired/rehabilitated 5 sewer laterals. Additionally, the service response programs crew completed 106 work orders in support of the grease and odor control program, responded to 44 customer requests for service (16 were NSD problem) and closed out 242 mark and locate request tickets.
- The preventative maintenance crews ran work orders on 106 laterals, cleaned approximately 50,620 feet of main line and CCTV inspected approximately 3,878 feet of main line and 143 lower laterals.
- Continued to assist with the District chloride study including late night work to repair two leaks found during CCTV.

**TREATMENT PLANT:**

Significant events for the month of July 2016 in the Treatment Plant Department:

**Plant Operations**

- For July 2016, the plant's influent flow was 191.0 MG as compared to last year flow for July 2015 of 183.2 MG
- There was no flow to the Napa River for July 2016.
- The production of recycle quality occurred for 31 days during July 2016 with a total flow of 131.8 MG.
- This July power consumption purchased from PG&E was 546 MWH in comparison to July 2015 purchase of 581 MWH.
- There was 0.00" rain fall for July 2016 as compared to 0.00" rain fall for July 2015.
- Pond 4 end of the month recorded level reading was 50.49" as compared to July 2015 of 46.15". Total remaining pond capacity for July 2016 was 36.5% as compared to July 2015 remaining capacity of 41.6%.

Maintenance:

Significant events for the month of July, 2016:

Cogeneration Performance

- Cogeneration unit ran 740 of 744 hours for the month – 99.46% uptime, averaging 308.12 Kw

Process Maintenance

- Cogeneration unit monthly emission test - in compliance with BAAQMD permit.
- Cogen Service:
  - Changed oil
  - Replaced oil filter socks
  - Replaced two air filter cartridges and pre-filter assembly
- Replaced torque indicators on Secondary Clarifiers
- Rotor and Stator replaced on Belt Press #3 Sludge feed pump
- Installed new discharge valve on Belt Press #3 delivery system
- Replace 2 cooling fans on Service Water VFD
- Septage PH-Replaced control/display board in controller
- Replaced NVC Crossroads Flow Meter
- Replaced Filter Effluent Turbidity Sensor

Projects

- Installed pre-filters on air inlets of Filter Support Building

Standby Power

- Plant generators operational testing only
- Riverpark ran for 1 hour, West Napa ran for 1 hour and 10 minutes, Stonecrest operational testing only

Influent Pumps

- Pumps are all operational

Laboratory:

- Monthly Recycle Effluent (E-1) monitoring was conducted on July 31, 2016. Sample results received indicated constituent concentrations within typical agronomic ranges.
- Monthly Influent (INF-001) monitoring was conducted on July 14, 2016. The Influent (INF-001) sample collected on July 13th indicated an Ammonia result of 42.9 mg/L which exceeds the Napa Sanitation District Local Limit of 36.0 mg/L. The Influent (INF-001) samples collected in July indicated an average Sodium concentration of 118.33 mg/L which exceeds the Napa Sanitation District Local Limit of 90 mg/L.
- Semiannual Groundwater monitoring was conducted on July 14, July 29 and August 15, 2016. Results from these sampling events indicated no unusual results.

**RECYCLING:**

Significant events in the Recycling Department for July 2016 include:

- Recycled water delivered for the month of July 2016 (119.814 million gallons), as compared to July 2015 (87.578 million gallons) is higher due to golf course, vineyard and district demand. Delivered recycled water volume represents the sum of all use site flow meter consumption values.
- Staff approved three recycled water service connections in the Los Carneros Water District and one in the Milliken-Sarco-Tulocay area "Napa Valley Country Club".
- Staff continued the land application of biosolids on the Jameson Reuse Site.

**POLLUTION PREVENTION:**

Significant events in the Pollution Prevention Department for July 2016 include:

- The Napa Safe Medication Collection Program collected 362.3 pounds of unneeded medications. The total amount of unneeded medications collected since program inception in September 2010 is 17,771 pounds.
- There were no tours of the Soscov Water Recycling Facility this month.
- The District issued 0 Toilet Rebates
- The District issued 0 ESME Washer Rebates

**ENGINEERING / CAPITAL PROJECTS / DEVELOPMENT:**

Significant events occurring in the Engineering Department for July 2016 include:

- Consultant continued design of the Browns Valley Trunk Project.
- Consultant continued design of the Recycled Water Reservoir Lining Project.

- Consultant continued developing a hydraulic model for the District's recycled water distribution system.
- Consultant continued studying the feasibility of utilizing algae for beneficial use.
- Consultant performed preliminary design work and cost estimate for the MST Recycled Water Pipeline Expansion Project.
- Staff began design of the Basin "G" Pipeline Rehabilitation Project
- The bid period for the Milliken Creek Sewer Rehabilitation Project – Phase 2 continued.
- Staff continued investigating the collection system for sources of chloride.
- Staff advertised the manhole adjustment project for informal bid and did not receive bids so staff issued a RFQ and received two quotes.
- Staff issued the Notice to Proceed for the Aeration Basin Diffusers, Instrumentation and Controls Project.
- Contractors completed construction of the Siphon Vault Hatch Replacement Project
- The contractors continued construction of the following projects:
  - a. Basin "L" Pipeline Rehabilitation Project #5
  - b. ACP Lining Project No. 1B
  - c. Sarco Creek Pipeline Replacement Project
  - d. Influent Pump Station Expansion Project (punchlist).
  - e. LCWD Recycled Water Pipeline Project (punchlist).
- Staff reviewed 19 sets of development plans and deemed 11 sets of plans complete. The approved plans consisted of four recycled water laterals, one residential lateral, four tenant improvements and two commercial buildings.

**Budget Status & Cash Summary - July 1, 2016 - July 31, 2016 (8.3% of the year)**

<i>Expenditures</i>	<b>FY 16/17 Budget</b>	<b>Expenditures to date</b>	<b>Encumbrances</b>	<b>Committed to date</b>	<b>Remaining Balance</b>	<b>Percent Committed</b>
<b><u>Operating</u></b>						
Salaries & Benefits	\$9,382,370	\$570,191	\$3,109	\$573,300	\$8,809,070	6.1%
Services & Supplies	5,568,310	305,990	927,369	1,233,359	4,334,951	22.1%
Taxes	28,250	-	-	-	28,250	0.0%
Debt Service	4,773,050	-	-	-	4,773,050	① 0.0%
Intrafund Transfers	8,900,000	2,225,000	-	2,225,000	6,675,000	② 25.0%
<b>Total Operating:</b>	<b>\$28,651,980</b>	<b>\$3,101,181</b>	<b>\$930,478</b>	<b>\$4,031,660</b>	<b>\$24,620,320</b>	<b>③ 14.1%</b>
<b><u>Capital</u></b>						
Bldgs/Improvements & Equip	\$17,180,700	\$340,399	\$223,063	\$563,462	\$16,617,238	④ 3.3%
Intrafund Transfers	5,512,000	485,035	-	485,035	5,026,965	8.8%
<b>Total Capital :</b>	<b>\$22,692,700</b>	<b>\$825,434</b>	<b>\$223,063</b>	<b>\$1,048,497</b>	<b>\$21,644,203</b>	<b>4.6%</b>
<b>Grand Total Expenditures:</b>	<b>\$51,344,680</b>	<b>\$3,926,615</b>	<b>\$1,153,542</b>	<b>\$5,080,157</b>	<b>\$46,264,523</b>	<b>9.9%</b>

<i>Revenues</i>	<b>FY 16/17 Budget</b>	<b>Collected to date</b>	<b>Encumbrances</b>	<b>Received to Date</b>	<b>Uncollected Revenue</b>	<b>Percent Collected</b>
<b><u>Operating</u></b>						
Use of Money/Property	\$794,000	\$0		\$0	\$794,000	0.0%
Intergovernmental	\$0	\$0		-	0	N/A
Charges for Services	23,828,500	5,140		5,140	23,823,360	0.0%
Miscellaneous Revenues	69,000	1,807		1,807	67,193	2.6%
Donations/Contributions (Capital Labor)	-	56,518		56,518	(56,518)	⑤ N/A
<b>Total Operating:</b>	<b>\$24,691,500</b>	<b>\$63,465</b>		<b>\$63,465</b>	<b>\$24,628,035</b>	<b>0.3%</b>
<b><u>Capital</u></b>						
Use of Money/Property	\$34,000	\$0		\$0	\$34,000	0.0%
Capacity Charges	5,512,000	695,319		695,319	4,816,682	12.6%
Intergovernmental	2,250,000	-		-	2,250,000	0.0%
Bond Proceeds	4,550,000	-		-	4,550,000	0.0%
Sale of Assets	-	-		-	-	N/A
Miscellaneous Revenues	-	-		-	-	N/A
Intrafund Transfers	14,412,000	2,710,035		2,710,035	11,701,965	② 18.8%
<b>Total Capital:</b>	<b>\$26,758,000</b>	<b>\$3,405,353</b>		<b>\$3,405,353</b>	<b>\$23,352,647</b>	<b>12.7%</b>
<b>Grand Total Revenue:</b>	<b>\$51,449,500</b>	<b>\$3,468,818</b>		<b>\$3,468,818</b>	<b>\$47,980,682</b>	<b>6.7%</b>

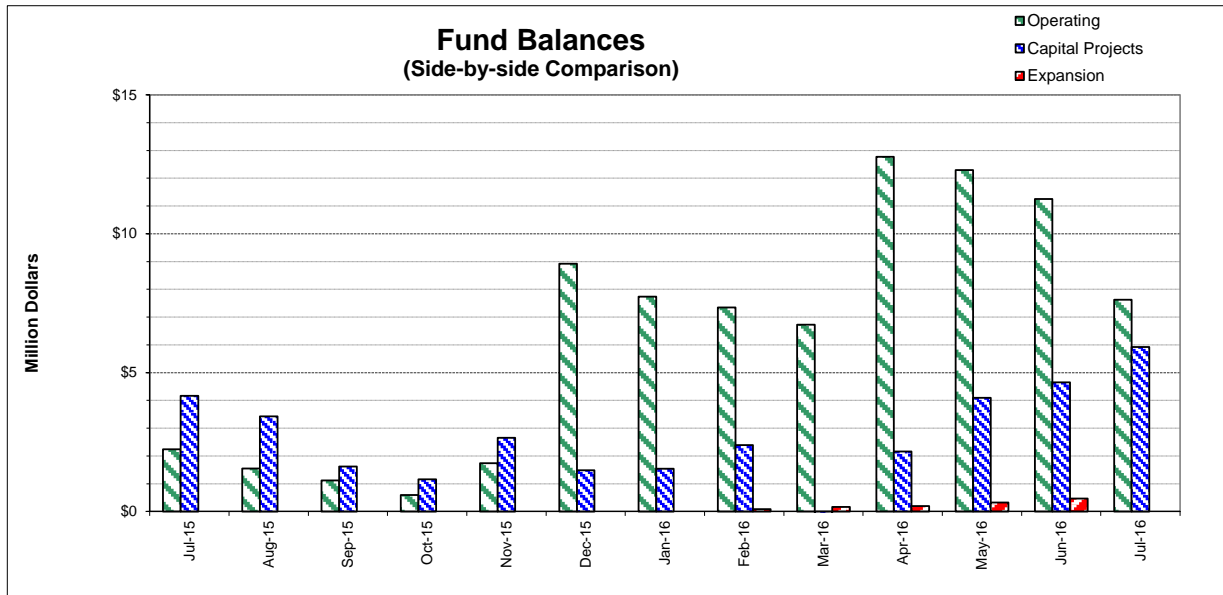
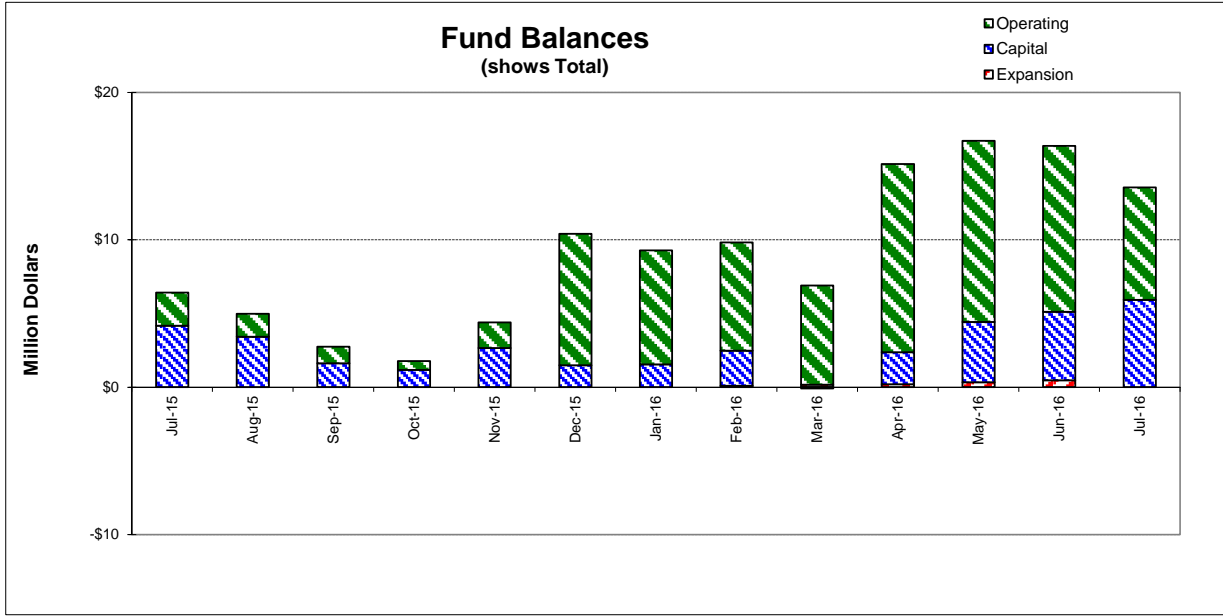
**Cash on Hand as of 7/31/16** **\$13,549,280.09**

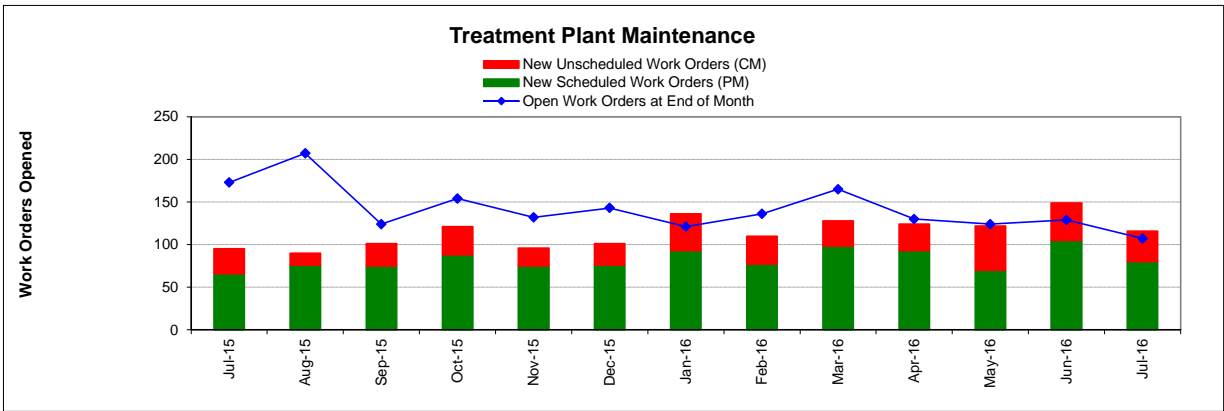
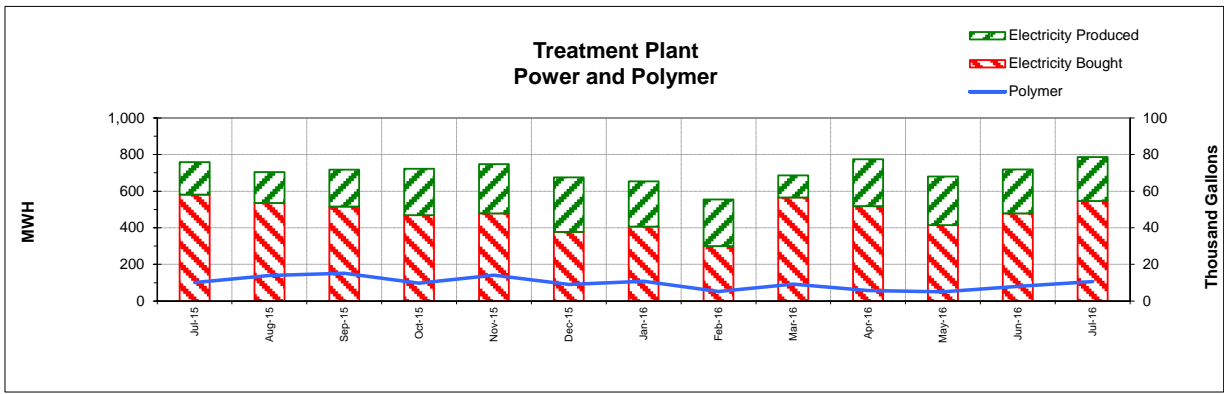
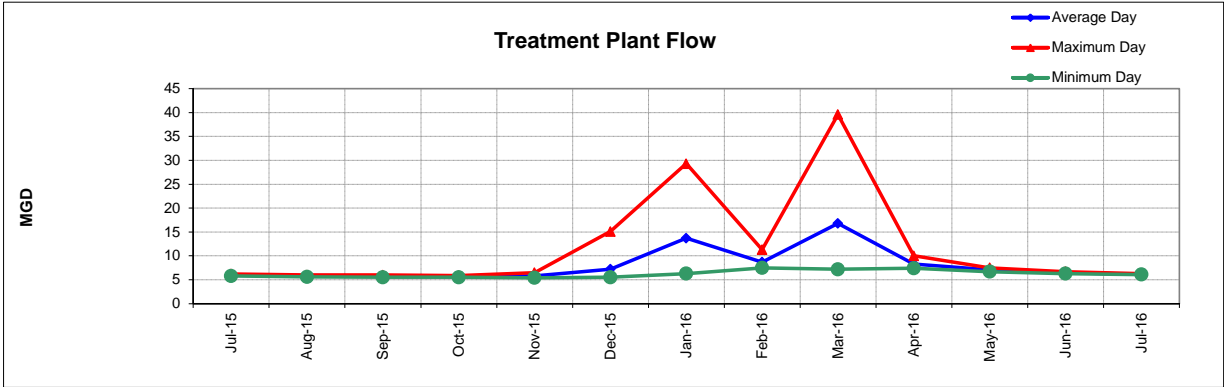
\*\*excluding Debt Service restricted funds  
7/31/16 -Effective Rate of Return = 0.76%

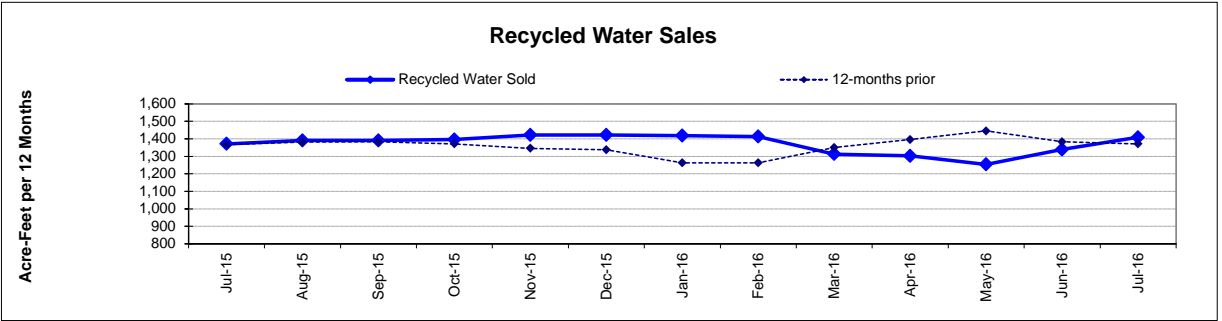
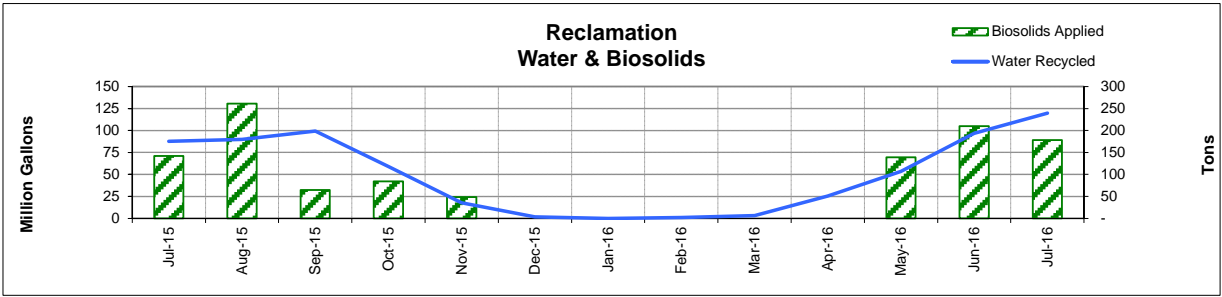
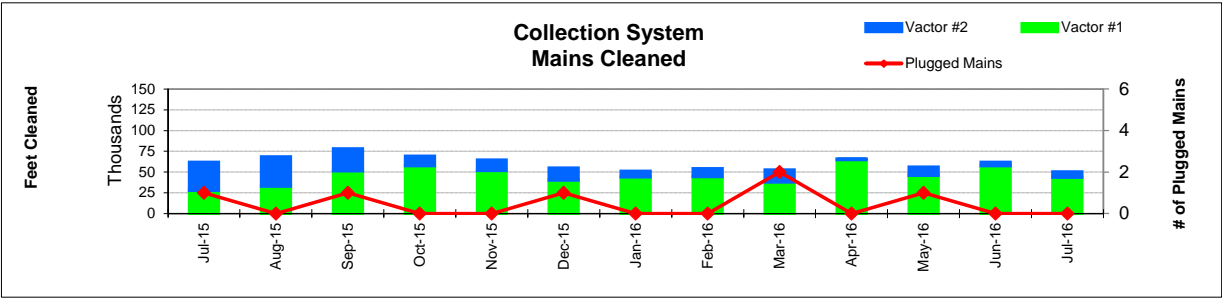
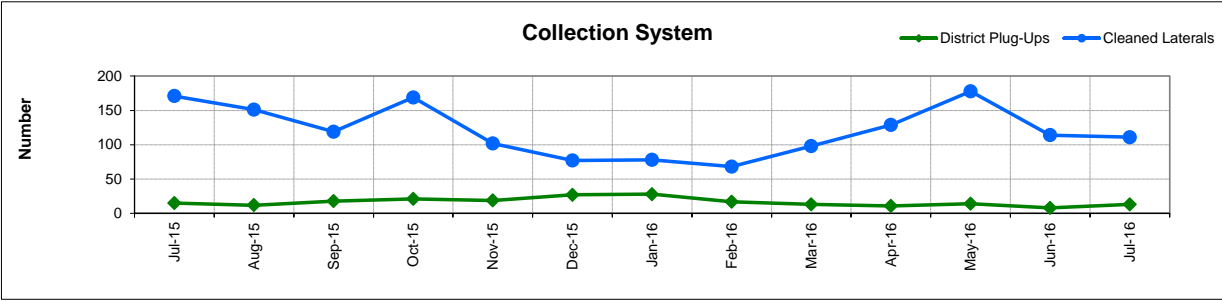
1. Series 2009B's and 2012A's principal/interest payments made in Aug & Feb
2. Processed 25% of intrafund transfer budget from Operating to Capital in July
3. Includes Debt Service and Intrafund Transfers; otherwise is 12.1%
4. See Capital Project Status report for details
5. In-house Labor for Capital Projects (Contra acct for Salaries)

**This page intentionally left blank.**









# FUND BALANCES - MONTHLY

CATEGORY	Jul-15	Aug-15	Sep-15	Oct-15	Nov-15	Dec-15	Jan-16	Feb-16	Mar-16	Apr-16	May-16	Jun-16	Jul-16
<i>(Thousand Dollars)</i>													
7800	2,241	1,548	1,119	598	1,739	8,920	7,737	7,347	6,726	12,775	12,297	11,251	7,626
7850	-	-	-	-	-	-	-	-	-	-	-	-	-
<b>Subtotal Operating</b>	<b>2,241</b>	<b>1,548</b>	<b>1,119</b>	<b>598</b>	<b>1,739</b>	<b>8,920</b>	<b>7,737</b>	<b>7,347</b>	<b>6,726</b>	<b>12,775</b>	<b>12,297</b>	<b>11,251</b>	<b>7,626</b>
Capital Improvement Projects	4,170	3,423	1,624	1,163	2,653	1,484	1,541	2,389	(96)	2,163	4,096	4,649	5,924
Debt Proceeds	-	-	-	-	-	-	-	-	-	-	-	-	-
<b>Subtotal Capital</b>	<b>4,170</b>	<b>3,423</b>	<b>1,624</b>	<b>1,163</b>	<b>2,653</b>	<b>1,484</b>	<b>1,541</b>	<b>2,389</b>	<b>(96)</b>	<b>2,163</b>	<b>4,096</b>	<b>4,649</b>	<b>5,924</b>
<b>Total Discretionary Funds</b>	<b>6,411</b>	<b>4,971</b>	<b>2,743</b>	<b>1,761</b>	<b>4,392</b>	<b>10,404</b>	<b>9,278</b>	<b>9,736</b>	<b>6,630</b>	<b>14,938</b>	<b>16,393</b>	<b>15,900</b>	<b>13,550</b>
Expansion Fund (Restricted)	-	-	-	-	-	-	-	85	168	200	326	467	-
<b>Total Restricted Funds</b>	<b>-</b>	<b>-</b>	<b>-</b>	<b>-</b>	<b>-</b>	<b>-</b>	<b>-</b>	<b>85</b>	<b>168</b>	<b>200</b>	<b>326</b>	<b>467</b>	<b>-</b>
<b>TOTAL ALL FUNDS</b>	<b>6,411</b>	<b>4,971</b>	<b>2,743</b>	<b>1,761</b>	<b>4,392</b>	<b>10,404</b>	<b>9,278</b>	<b>9,821</b>	<b>6,798</b>	<b>15,138</b>	<b>16,719</b>	<b>16,367</b>	<b>13,550</b>

# DEVELOPMENT WORKLOAD - MONTHLY

CATEGORY	Jul-15	Aug-15	Sep-15	Oct-15	Nov-15	Dec-15	Jan-16	Feb-16	Mar-16	Apr-16	May-16	Jun-16	Jul-16
<b><u>Phone Requests</u></b>													
Maps/Drawings	6	8	10	6	14	5	9	9	9	8	9	5	5
Lateral Permits	-	-	-	-	-	-	-	-	-	-	-	-	-
Policy Questions	1	8	7	10	4	3	8	12	9	6	9	10	7
Development Questions	41	68	59	93	65	56	89	77	66	105	58	75	99
Miscellaneous	3	11	9	6	5	6	1	6	8	7	14	14	14
<b>TOTAL</b>	<b>51</b>	<b>95</b>	<b>85</b>	<b>115</b>	<b>88</b>	<b>70</b>	<b>107</b>	<b>104</b>	<b>92</b>	<b>126</b>	<b>90</b>	<b>104</b>	<b>125</b>
<b><u>Counter Requests</u></b>													
Maps/Drawings	1	2	2	1	2	1	3	3	2	5	-	-	3
Lateral Permits	6	9	9	15	10	14	15	11	8	10	13	12	9
Policy Questions	-	3	1	-	-	2	-	-	1	2	-	2	-
Development Questions	2	10	7	11	10	9	8	17	12	23	2	10	17
Miscellaneous	-	-	-	3	-	1	1	-	-	2	-	3	5
<b>TOTAL</b>	<b>9</b>	<b>24</b>	<b>19</b>	<b>30</b>	<b>22</b>	<b>27</b>	<b>27</b>	<b>31</b>	<b>23</b>	<b>42</b>	<b>15</b>	<b>27</b>	<b>34</b>
<b><u>Initial Request (Referrals)</u></b>	<b>13</b>	<b>16</b>	<b>14</b>	<b>20</b>	<b>15</b>	<b>9</b>	<b>15</b>	<b>14</b>	<b>16</b>	<b>11</b>	<b>17</b>	<b>14</b>	<b>12</b>
<b><u>Connection Permits Issued</u></b>													
Residential Permits	4	14	7	2	2	8	5	3	4	2	6	9	-
Commercial Permits	1	-	2	4	2	3	-	1	2	1	3	2	1
Industrial Permits	-	-	-	-	-	1	-	-	-	-	-	-	-
<b>TOTAL PERMITS</b>	<b>5</b>	<b>14</b>	<b>9</b>	<b>6</b>	<b>4</b>	<b>12</b>	<b>5</b>	<b>4</b>	<b>6</b>	<b>3</b>	<b>9</b>	<b>11</b>	<b>1</b>
Residential Units	5	14	7	2	2	8	12	4	11	2	6	9	-
Commercial Units	2	-	2	4	183	3	-	1	2	1	3	2	1
<b>TOTAL UNITS</b>	<b>7</b>	<b>14</b>	<b>9</b>	<b>6</b>	<b>185</b>	<b>11</b>	<b>12</b>	<b>5</b>	<b>13</b>	<b>3</b>	<b>9</b>	<b>11</b>	<b>1</b>
<b><u>Annexations</u></b>													
Submitted	-	-	-	-	2	1	-	-	-	-	-	1	-
Acreage	-	-	-	-	1.60	0.12	-	-	-	-	-	1.50	-
<b><u>Plans Reviewed</u></b>													
<b><u>Subdivisions/Sites</u></b>													
First Submittal	3	3	7	4	5	1	3	4	3	8	1	5	1
Second Submittal	2	1	1	3	3	-	-	1	4	3	-	1	1
Third Submittal	1	2	2	1	2	2	1	2	1	1	1	1	3
<b><u>Building/Tenant Improvements</u></b>													
First Submittal	7	15	15	17	19	13	9	2	16	21	12	10	3
Second Submittal	5	1	11	9	4	8	8	1	7	8	7	4	6
Third Submittal	1	-	3	3	9	5	4	1	3	1	6	3	5
<b><u>Miscellaneous Plan Reviews</u></b>	<b>10</b>	<b>-</b>	<b>-</b>	<b>-</b>	<b>-</b>	<b>-</b>	<b>-</b>	<b>-</b>	<b>-</b>	<b>-</b>	<b>-</b>	<b>-</b>	<b>-</b>
<b>TOTAL PLANS REVIEWED</b>	<b>29</b>	<b>22</b>	<b>39</b>	<b>37</b>	<b>42</b>	<b>29</b>	<b>25</b>	<b>11</b>	<b>34</b>	<b>42</b>	<b>27</b>	<b>24</b>	<b>19</b>

# INSPECTION WORKLOAD - MONTHLY

CATEGORY	Jul-15	Aug-15	Sep-15	Oct-15	Nov-15	Dec-15	Jan-16	Feb-16	Mar-16	Apr-16	May-16	Jun-16	Jul-16
<b><u>CONSTRUCTION</u></b>													
Locating Sewers	-	-	-	-	-	-	3	-	-	-	-	-	-
Permit Processing	-	-	-	-	-	-	-	-	-	-	-	-	-
Preconstruction Meetings	3	4	-	1	1	2	4	6	6	8	9	7	3
Inspections - Mains	-	-	-	-	-	-	-	6	3	3	2	-	2
Inspections - Manholes	-	10	-	2	13	-	10	91	49	15	8	13	3
Inspections - Laterals	23	20	21	8	9	14	10	15	16	45	29	22	20
Inspections - Cleanouts	32	30	30	12	51	43	17	48	41	42	60	51	28
Inspections - Review Video	5	1	-	1	2	1	4	2	1	4	-	4	-
Demo - Septic Tanks	-	-	-	-	-	-	-	-	-	-	-	-	-
Demo - Buildings	-	-	-	1	-	-	-	1	3	-	-	2	-
Update Record Drawings	-	-	-	-	-	-	-	-	-	-	-	-	-
<b>TOTAL</b>	<b>63</b>	<b>65</b>	<b>51</b>	<b>25</b>	<b>76</b>	<b>60</b>	<b>48</b>	<b>169</b>	<b>119</b>	<b>117</b>	<b>108</b>	<b>99</b>	<b>56</b>
<b><u>MISCELLANEOUS</u></b>													
Meter Readings	-	9	-	-	15	33	-	-	10	-	9	9	10
Washdown Facility Inspections	-	-	-	11	-	-	-	-	-	-	-	-	-
General Customer Assistance	11	5	19	20	4	3	7	36	37	16	10	1	4
City of Napa Water Discharge	-	-	-	-	-	-	-	-	-	-	-	-	-
<b>TOTAL</b>	<b>11</b>	<b>14</b>	<b>19</b>	<b>31</b>	<b>19</b>	<b>36</b>	<b>7</b>	<b>36</b>	<b>47</b>	<b>16</b>	<b>19</b>	<b>10</b>	<b>14</b>
<b><u>SPECIAL PROJECTS</u></b>													
	21	21	21	18	5	6	-	3	-	15	21	22	31

# POLLUTION PREVENTION WORKLOAD - MONTHLY

CATEGORY	Jul-15	Aug-15	Sep-15	Oct-15	Nov-15	Dec-15	Jan-16	Feb-16	Mar-16	Apr-16	May-16	Jun-16	Jul-16
<b><u>Outreach Activities</u></b>													
Plant Tours Conducted	1			1	2	1	3	2	1	4	4	2	0
Presentations Made				0	0	0	0	1	1	5	2	0	0
<b>Total Outreach Activities</b>	1	-	-	1	2	1	3	3	2	9	6	2	-
<b><u>Inspections Conducted</u></b>													
Food Service Facilities	1	-	7	1	-	10	24	30	31	19	12	-	-
Auto Body & Car Wash	-	-	-	-	-	-	-	-	-	-	-	-	-
Other	-	-	-	-	-	-	-	-	1	1	-	-	-
<b>Total Inspections</b>	1	-	7	1	-	10	24	30	32	20	12	-	-
<b><u>Compliance Issues</u></b>													
NOVs Issued	2	1	2	1	3	1	2	-	1	2	-	2	1
NOEs Issued	-	-	-	1	1	1	-	-	-	1	2	-	-
Non-Compliant-FOG	-	-	-	-	-	-	-	1	-	-	-	-	-
<b>Total Compliance Issues</b>	2	1	2	2	4	2	2	1	1	3	2	2	1
<b><u>Pollution Prevention</u></b>													
Clothes Washer Rebates	-	-	12	-	8	27	12	10	-	18	14	45	-
Toilet Retrofit Rebates	15	9	35	17	19	21	1	6	22	19	6	10	-
Pharmaceuticals Diverted (in lbs)	326	293	213	305	199	166	556	341	341	322	240	243	362

**RECYCLED WATER DELIVERIES - MONTHLY**

	Acres	Jul-15	Aug-15	Sep-15	Oct-15	Nov-15	Dec-15	Jan-16	Feb-16	Mar-16	Apr-16	May-16	Jun-16	Jul-16
<b>MONTHLY (MG)</b>														
<b>Water Sold</b>														
Golf Courses	405.0	55.514	53.870	41.120	20.985	2.744	0.795	-	0.027	0.070	13.197	37.578	57.273	62.709
Cemeteries	5.0	0.786	0.740	0.854	0.448	0.082	-	-	0.145	0.000	0.015	0.447	0.709	0.931
Parks	18.5	1.191	1.132	0.858	0.415	0.086	-	-	-	-	0.036	0.725	1.078	1.299
Schools	21.0	2.020	2.042	1.827	1.119	0.382	0.088	-	0.040	0.075	0.360	1.528	2.675	2.181
Commerical	167.6	15.188	14.433	13.091	10.945	4.335	0.609	-	0.346	2.430	6.403	11.038	17.053	15.318
Vineyards	564.0	0.730	0.325	0.441	0.396	10.205	0.045	-	0.446	0.365	5.268	2.034	13.413	15.693
Trucked Water	175.0	0.306	0.269	0.333	0.473	0.039	0.020	-	0.010	0.018	0.098	0.064	0.135	0.232
<b>Subtotal Sales</b>	<b>1,356.1</b>	<b>75.734</b>	<b>72.811</b>	<b>58.524</b>	<b>34.780</b>	<b>17.872</b>	<b>1.556</b>	<b>-</b>	<b>1.012</b>	<b>2.958</b>	<b>25.377</b>	<b>53.413</b>	<b>92.336</b>	<b>98.363</b>
<b>District Use</b>														
Jameson	330.0	-	3.103	16.280	14.046	-	-	-	-	0.084	-	-	1.481	5.414
Somky	213.0	11.844	14.068	24.405	10.220	-	-	-	-	-	-	-	2.950	16.037
Fagundes/Airport	50.5	-	-	-	-	-	-	-	-	-	-	-	-	-
<b>Subtotal District</b>	<b>593.5</b>	<b>11.844</b>	<b>17.171</b>	<b>40.685</b>	<b>24.266</b>	<b>-</b>	<b>-</b>	<b>-</b>	<b>-</b>	<b>0.084</b>	<b>-</b>	<b>-</b>	<b>4.431</b>	<b>21.451</b>
<b>TOTAL DELIVERED</b>	<b>1,949.6</b>	<b>87.578</b>	<b>89.981</b>	<b>99.209</b>	<b>59.046</b>	<b>17.872</b>	<b>1.556</b>	<b>-</b>	<b>1.012</b>	<b>3.042</b>	<b>25.377</b>	<b>53.413</b>	<b>96.766</b>	<b>119.814</b>
<b>ANNUAL (AF)</b>														
<b>Water Sold</b>														
Golf Courses	405.0	977	1,002	998	1,001	997	1,000	999	999	915	899	840	869	891
Cemeteries	5.0	15	15	16	15	15	15	15	15	15	13	13	13	13
Parks	18.5	13	14	16	17	17	17	17	17	17	16	16	17	17
Schools	21.0	39	39	39	40	40	40	40	40	37	35	35	37	38
Commerical	167.6	289	286	287	293	295	294	292	286	275	270	276	294	295
Vineyards	564.0	24	24	25	21	51	49	49	50	49	64	68	103	149
Trucked Water	175.0	15	11	9	9	8	7	6	6	6	6	6	5	5
<b>Subtotal Sales</b>	<b>1,356.1</b>	<b>1,372</b>	<b>1,390</b>	<b>1,391</b>	<b>1,396</b>	<b>1,423</b>	<b>1,422</b>	<b>1,419</b>	<b>1,414</b>	<b>1,313</b>	<b>1,303</b>	<b>1,254</b>	<b>1,339</b>	<b>1,409</b>
<b>District Use</b>														
Jameson	330.0	121	101	122	103	103	103	103	103	103	103	103	107	124
Somky	213.0	270	270	305	291	291	291	291	291	291	291	221	195	208
Fagundes/Airport	50.5	-	-	-	-	-	-	-	-	-	-	-	-	-
<b>Subtotal District</b>	<b>593.5</b>	<b>390</b>	<b>371</b>	<b>427</b>	<b>394</b>	<b>394</b>	<b>394</b>	<b>394</b>	<b>394</b>	<b>394</b>	<b>394</b>	<b>324</b>	<b>302</b>	<b>332</b>
<b>TOTAL DELIVERED</b>	<b>1,949.6</b>	<b>1,762</b>	<b>1,761</b>	<b>1,818</b>	<b>1,790</b>	<b>1,816</b>	<b>1,816</b>	<b>1,812</b>	<b>1,807</b>	<b>1,707</b>	<b>1,697</b>	<b>1,578</b>	<b>1,641</b>	<b>1,740</b>



# BIOSOLIDS HANDLING - MONTHLY

Site	Jul-15	Aug-15	Sep-15	Oct-15	Nov-15	Dec-15	Jan-16	Feb-16	Mar-16	Apr-16	May-16	Jun-16	Jul-16
<u>Land Applied by NSD</u>													
Somky													
Airport/Fagundes													
Jameson Canyon	142	261	64	84	49	-	-	-	-	-	139	210	178
Subtotal by NSD	142	261	64	84	49	-	-	-	-	-	139	210	178
<u>Land Applied by Contractor</u>													
Somky													
Airport/Fagundes													
Jameson Canyon													
Subtotal by Contractor	-	-	-	-	-	-	-	-	-	-	-	-	-
<b>Total Land Applied</b>	<b>142</b>	<b>261</b>	<b>64</b>	<b>84</b>	<b>49</b>	<b>-</b>	<b>-</b>	<b>-</b>	<b>-</b>	<b>-</b>	<b>139</b>	<b>210</b>	<b>178</b>
<b>Off Site (Contractor)</b>													
<b>Total (tons)</b>	<b>142</b>	<b>261</b>	<b>64</b>	<b>84</b>	<b>49</b>	<b>-</b>	<b>-</b>	<b>-</b>	<b>-</b>	<b>-</b>	<b>139</b>	<b>210</b>	<b>178</b>

# COLLECTION SYSTEM MAINTENANCE - MONTHLY

CATEGORY	Jul-15	Aug-15	Sep-15	Oct-15	Nov-15	Dec-15	Jan-16	Feb-16	Mar-16	Apr-16	May-16	Jun-16	Jul-16
<b><u>Plugups</u></b>													
<b>Total Calls</b>	47	47	63	57	53	69	78	58	43	41	45	33	48
Business Hours	33	29	37	35	29	40	40	42	22	31	30	22	27
After Hours	14	18	26	22	24	29	38	16	21	10	15	11	21
District's	15	12	18	21	19	27	28	17	13	11	14	8	13
Property Owner's	32	35	45	36	34	42	50	39	30	30	31	25	35
Plugged Main Lines	1		1			1			2		1		
Run Lateral w/Eel	171	151	119	169	102	77	78	68	98	129	178	114	111
<b><u>Cleaning (feet of sewer)</u></b>													
Vactor #1	28,193	32,946	51,755	57,917	51,959	40,292	44,407	44,811	38,201	65,231	46,352	57,690	43,988
Vactor #2	33,397	35,318	26,032	11,147	12,224	14,325	6,329	9,199	14,073	325	9,687	4,002	6,288
Hydro													
Rodder								650					
<b>Total (feet)</b>	<b>61,590</b>	<b>68,264</b>	<b>77,787</b>	<b>69,064</b>	<b>64,183</b>	<b>54,617</b>	<b>50,736</b>	<b>54,660</b>	<b>52,274</b>	<b>65,556</b>	<b>56,039</b>	<b>61,692</b>	<b>50,277</b>
<b><u>Cleaning Days</u></b>													
Vactor #1	10	10	14	19	16	18	16	13	14	18	17	17	15
Vactor #2	10	12	10	6	6	5	2	7	3	1	2	2	3
Hydro													
Rodder								1					
<b><u>Feet/day</u></b>													
Vactor #1	2,800	3,300	3,700	3,050	3,250	2,250	2,800	3,450	2,750	3,600	2,750	3,400	2,950
Vactor #2	3,350	2,950	2,600	1,850	2,050	2,850	3,150	1,300	4,700	350	4,850	2,000	2,100
Hydro													
Rodder								650	222				
<b><u>Video Inspections</u></b>													
Mains (feet)	4,273	11,613	6,577	12,031	8,137	7,248	6,583	9,718	12,343	8,670	17,352	15,115	3,878
Laterals (each)	224	185	194	230	159	173	175	131	154	181	225	152	183
<b><u>Construction (each)</u></b>													
Cleanouts	14	12	10	7	10	23	22	20	13	17	7	10	7
Laterals	6	4	8		2	2	5	8		4	3	5	4
Mains				1			1			2			
Manholes			1	1									
Other											39		
<b><u>USA Markings</u></b>													
Regular (w/in 2 days)	306	256	267	251	218	178	222	281	247	270	319	225	244
Emergency (w/in 2 hours)	9	11	13	13	8	16	21	8	13	5	-	6	14

## WASTEWATER PLANT OPERATIONS DATA - MONTHLY

[illegible]

# **WASTEWATER PLANT MAINTENANCE and LABORATORY DATA - MONTHLY**

<b>CATEGORY</b>	<b>Jul-15</b>	<b>Aug-15</b>	<b>Sep-15</b>	<b>Oct-15</b>	<b>Nov-15</b>	<b>Dec-15</b>	<b>Jan-16</b>	<b>Feb-16</b>	<b>Mar-16</b>	<b>Apr-16</b>	<b>May-16</b>	<b>Jun-16</b>	<b>Jul-16</b>
<b><u>Scheduled</u></b>													
Old	92	90	127	50	74	66	78	39	55	77	66	53	55
New	66	76	75	88	75	76	93	77	98	93	70	105	80
Completed	68	39	152	64	83	64	132	61	76	104	83	103	98
<b>New Balance</b>	<b>90</b>	<b>127</b>	<b>50</b>	<b>74</b>	<b>66</b>	<b>78</b>	<b>39</b>	<b>55</b>	<b>77</b>	<b>66</b>	<b>53</b>	<b>55</b>	<b>37</b>
<b><u>Unscheduled</u></b>													
Old	80	83	80	74	80	66	65	82	81	88	64	71	74
New	29	14	26	33	21	25	43	33	30	31	52	44	36
Completed	26	17	32	27	35	26	26	34	23	55	45	41	40
<b>New Balance</b>	<b>83</b>	<b>80</b>	<b>74</b>	<b>80</b>	<b>66</b>	<b>65</b>	<b>82</b>	<b>81</b>	<b>88</b>	<b>64</b>	<b>71</b>	<b>74</b>	<b>70</b>
<b><u>Total Work Orders</u></b>													
Old	172	173	207	124	154	132	143	121	136	165	130	124	129
New	95	90	101	121	96	101	136	110	128	124	122	149	116
Completed	94	56	193	93	118	90	158	95	99	160	128	144	138
<b>New Balance</b>	<b>173</b>	<b>207</b>	<b>124</b>	<b>154</b>	<b>132</b>	<b>143</b>	<b>121</b>	<b>136</b>	<b>165</b>	<b>130</b>	<b>124</b>	<b>129</b>	<b>107</b>
<b><u>LAB ANALYSES</u></b>													
<b><u>Sample Type</u></b>													
Regulatory	367	382	342	346	408	408	315	281	325	392	130	158	193
Process Control	871	881	843	791	1,310	1,258	1,288	1,157	1,276	1,235	778	729	744
Special Request	132	333	554	174	299	235	60	17	1	5	320	11	207
Quality Control/Assurance	37	12	5	7	302	302	372	500	306	349	209	5	32
<b>TOTAL</b>	<b>1,407</b>	<b>1,608</b>	<b>1,744</b>	<b>1,318</b>	<b>2,319</b>	<b>2,203</b>	<b>2,035</b>	<b>1,955</b>	<b>1,908</b>	<b>1,981</b>	<b>1,437</b>	<b>903</b>	<b>1,176</b>

**Summary of NSD Capital Project Status  
through 7-31-2016**

Proj #	Description	FY 16-17 Budget	FY 15-16 Carryovers	Adj.	Final FY 16-17 Budget	Encumbrance	Costs Paid to Date	Budget Remaining	% Budget Expended
<b><u>COLLECTION SYSTEM</u></b>									
13701	Main Line Sewer Rehab	88,700			88,700	-	-	88,700	-
13702	Manhole Raising/Rehab	198,900			198,900	-	343	198,557	0%
13703	Lateral Replacement/Rehab	72,000			72,000	-	2,676	69,324	4%
13704	Cleanouts Installation/Rehab	87,000			87,000	-	2,901	84,099	3%
13705	I&I Reduction Program	200,000			200,000	-	840	199,160	0%
14703	Browns Valley Rd & First St	2,800,000			2,800,000	-	1,583	2,798,417	0%
15703	Sarco Crk PL Rplcmnt/CalTRANS	1,050,000			1,050,000	-	2,760	1,047,240	0%
16701	Basin L - I&I Reduction #5	1,400,000			1,400,000	-	26,829	1,373,171	2%
17701	ACP CIPP Lining Project #2	350,000			350,000	-	-	350,000	-
17702	Upper Lateral Rehab - Basin L (Pilot #2)	5,000			5,000	-	-	5,000	-
17703	Manhole Rehab - Nipak	90,000			90,000	-	-	90,000	-
17704	Infltrtn Rehab - SSMH/PL (CI-)	400,000			400,000	-	-	400,000	-
17705	Soscol Ave (8th to Oil Co Rd)	500,000			500,000	-	-	500,000	-
17706	Rehab - Ranch De Los Robles	400,000			400,000	-	-	400,000	-
17707	66-inch Trunk CCTV Inspection	150,000			150,000	-	-	150,000	-
17708	Basin G - I&I Reduction #1	1,200,000			1,200,000	-	-	1,200,000	-
<b><u>COLLECTION SYSTEM - EQUIPMENT</u></b>									
17709	Eel Replacment 1	5,400		100	5,500	5,454	-	46	-
17710	Vehicle 510 - Water Truck	207,900		(5,100)	202,800	186,709	-	16,091	-
<b><u>LIFT STATIONS</u></b>									
17711	West Napa PS - Rehab	1,750,000			1,750,000	-	-	1,750,000	-
<b><u>TREATMENT</u></b>									
17712	Headworks/Primary - Odor Ctrl	20,000			20,000	-	-	20,000	-
<b><u>TREATMENT - EQUIPMENT</u></b>									
13741	Secondary PS Pump Rebuild (3)	37,500			37,500	-	-	37,500	-
15712	Rehab Pond 1 Storage Structure	25,000			25,000	-	-	25,000	-
15713	Aeration Basin Instrmntn/Ctrl	1,200,000			1,200,000	-	2,153	1,197,847	0%
16713	Buried Metallic Piping (eval/rehab)	40,000			40,000	-	-	40,000	-
16715	Cogen Bottom End Overhaul	75,000			75,000	-	-	75,000	-
17713	Secondary PS VFD Rplcmnt (3)	53,600			53,600	-	-	53,600	-
17714	WWTP MP - 3W Sys Imprvmnts	60,000			60,000	-	-	60,000	-
17715	Turbidimeters (7) Tertiary Rplcmnts	11,800			11,800	-	-	11,800	-

**Summary of NSD Capital Project Status  
through 7-31-2016**

Proj #	Description	FY 16-17 Budget	FY 15-16 Carryovers	Adj.	Final FY 16-17 Budget	Encumbrance	Costs Paid to Date	Budget Remaining	% Budget Expended
17716	FOG - Strain Press	200,000			200,000	-	-	200,000	-
17717	Energy Audit - Odor Control VFD	51,700			51,700	-	-	51,700	-
17718	Energy Audit - LED Pole/Arm Mounted Fixtures	78,100			78,100	-	-	78,100	-
17719	Lab - Smpler 4700 - Pretreatment	7,500			7,500	-	-	7,500	-
17720	Lab - Smpler 4700 - Pretreatment	7,500			7,500	-	-	7,500	-
17721	Lab - Chlorophyll A Analyzer - Pond Water	5,400			5,400	-	-	5,400	-
17722	Main - Stationary Gas Detector Replacment Ph 2	140,000			140,000	-	-	140,000	-
17723	Main - Rotork Actuator Replacment	88,700			88,700	-	-	88,700	-
17724	Main - Primary Clarifier Exhaust Fan Replacment	5,000			5,000	-	-	5,000	-
17725	Main - Sump #3 Modification	10,000			10,000	-	-	10,000	-
<b><u>TREATMENT - STRUCTURES</u></b>									
17726	Headworks Equipment Rehab/Replacment	10,000			10,000	-	-	10,000	-
17727	Roof Replacement - Digester 2nd Floor	125,000			125,000	-	-	125,000	-
17728	Roof Replacement - AB/Blower Building	40,000			40,000	-	-	40,000	-
17729	DAF Access Opening	20,000			20,000	-	-	20,000	-
<b><u>SCADA</u></b>									
<b><u>RECYCLING - DISTRICT</u></b>									
15717	Isolation Valve on Kirkland Line (Devlin Rd)	49,200			49,200	-	105	49,095	0%
16716	Line Recycled Water Reservoir	1,320,000			1,320,000	-	1,000	1,319,000	0%
17730	Jameson Solids Pad Dump Bay	15,000			15,000	-	-	15,000	-
17731	Jameson Office Trailer Replacment	25,000			25,000	-	-	25,000	-
17732	Vehicle 710 - 8830 Tractor	200,000			200,000	-	-	200,000	-
17733	Vehicle 172 - Ford F150	28,000		5,000	33,000	30,900	-	2,100	-
<b><u>RECYCLING - EXPANSION</u></b>									
13727	North Bay Wate Reuse Project	845,000			845,000	-	283,881	561,119	34%
16722	MST RW Pipeline Extension	1,200,000			1,200,000	-	-	1,200,000	-
<b><u>OTHER</u></b>									
13729	Development Technical Support	231,800			231,800	-	15,328	216,472	7%
<b>GRAND TOTAL ALL PROJECTS</b>		<b>\$17,180,700</b>	<b>-</b>	<b>-</b>	<b>\$17,180,700</b>	<b>\$223,063</b>	<b>\$340,399</b>	<b>\$16,617,238</b>	<b>2%</b>