



Napa Sanitation District

General Manager's Report

for

April, 2016

Contents:

- a. Transmittal Memo
- b. Budget Status and Cash Summary
- c. Key Information Graphs – Fund Balances, Treatment Plant and Collection
- d. Fund Balances
- e. Development Processing
- f. Construction Inspection
- g. Pollution Prevention
- h. Recycled Water Deliveries
- i. Biosolids Handling
- j. Collection System Maintenance
- k. Treatment Plant Operations
- l. Treatment Plant Maintenance & Laboratory
- m. Capital Project Expenditure Summary



NAPA SANITATION DISTRICT

General Manager's Report

Dedicated to Preserving the Napa River for Generations to Come

DATE: June 1, 2016

FROM: Timothy B. Healy, General Manager

SUBJECT: General Manager's Report for April, 2016

REGULATORY COMPLIANCE:

Collection System Compliance:	0 Category 1 SSO's, 0 Category 2 SSO's and 3 Category 3 SSO's
NPDES Permit (WWTP) Compliance:	Full compliance with all regulations
Air Quality Compliance:	Full compliance with all regulations
Recycled Water Compliance:	Full compliance with all regulations
Biosolids Compliance:	Full compliance with all regulations
Significant Comments:	None

FISCAL STATUS:

Period Covered:	July 1, 2015 – April 30, 2016
Percent Fiscal Year:	83.3%
Operating Expenditures to date:	85.2%
Historical Expenditures to date:	82.2%
Significant Comments:	Now that it is the 4 th quarter of the fiscal year, the "Operating Expenditures to date" are closely in line with the "Historical Expenditures to date." The slight difference is contributed to additional debt service that began in FY 13-14.

Sewer service charges were received from the second installment payments of the property taxes in April.

PERSONNEL:

Significant events for the month of April 2016 in the Human Resources Department:

New Hires:	None
Separations:	None
Promotions:	None
Recruitment Activities:	Began recruitment for Collection System Worker
Injuries:	None

Summaries of Operational Highlights are on following pages.

COLLECTIONS:

Significant events for the month of April 2016 in Collection System Maintenance include:

- The District had 0 Category 1 Sanitary Sewer Overflows (SSO's), 0 Category 2 SSO's and 3 Category 3 SSO's during the month. (A Category 1 is defined as an SSO that reached a drainage channel and/or surface water or; an SSO that reached a storm drain pipe that was not fully recovered and returned to the sanitary sewer system. A Category 2 is defined as an SSO that is equal to or greater than 1,000 gallons that did not reach a surface water. A Category 3 is defined as an SSO that is less than 1,000 gallons that did not reach a surface water. These are usually minor overflows of less than 10 gallons from cleanouts on District laterals that can be cleaned up by the crews.)
- The repair crew installed 17 cleanouts, repaired/rehabilitated 8 sewer laterals and performed 2 main line repairs. Additionally, the service response programs crew completed 108 work orders in support of the grease and odor control program, responded to 41 customer requests for service and closed out 270 mark and locate request tickets.
- The preventative maintenance crews ran work orders on 129 laterals, cleaned approximately 65,685 feet of main line and CCTV inspected approximately 8670 feet of main line and 181 lower laterals.
- Continued to assist with the District chloride study.

TREATMENT PLANT:

Significant events for the month of April 2016 in the Treatment Plant Department:

Plant Operations

- For April 2016, the plant's influent flow was 249.2 MG as compared to last year flow for April 2015 of 208.2 MG
- Total flow to the Napa River for April 2016 was 282.4 MG as compared to April 2015 flow of 209.9 MG.
- The production of recycle quality occurred for 14 days during April 2016 with a total flow of 30.5 MG.
- This April power consumption purchased from PG&E was 519 MWH in comparison to April 2015 purchase of 406 MWH.
- There was 0.63" rain fall for April 2016 as compared to 2.0" rain fall for April 2015.
- Pond 4 end of the month recorded level reading was 38.54" as compared to April 2015 of 27.81". Total remaining pond capacity for April 2016 was 48.2% as compared to April 2015 remaining capacity of 55.9%.

Maintenance:

Significant events for the month of April, 2016

Cogeneration Performance

- Cogeneration unit ran 699 of 720 hours for the month – 97.08% uptime, averaging 338.79 Kw

Process Maintenance

- Replaced broken electrical conduit straps in west gallery
- West Napa, replaced Pump, Floats and Control Panel in sump for South dry well
- Aeration Basin #4, replaced RAS Pump #2 and VFD
- Remove and replace Eagle Vines Flowmeter
- Cogeneration Service;
 - Changed oil and filter socks
 - Replaced Pre-Air Cleaner unit
 - Replaced Auxiliary water pump belts
 - Changed Siloxane filter media

Projects

- Procure and Install Mag Flowmeter at Somky
- Install Conductivity System in Headworks
- Upgrade PH Probe and Controller at Headworks
- Relocated ARV's for Primary and Pond Effluent piping above decking
- Installed Solar Battery Chargers on 6 standby diesel pumps
- Completed staff Telemetry System Training

Standby Power

- Plant generators operational testing only
- Riverpark, Stonecrest, West Napa operational testing only

Influent Pumps

- Pump 220 down 11 days due to control power short
- Rest of pumps operational

Laboratory:

Monthly Effluent (EFF-001) monitoring was conducted on April 5th, 2016. All Effluent sample results received indicated were within NPDES limits.

Monthly Recycle Effluent (E-1) monitoring was conducted on April 8th, 2016. Sample results received indicated constituent concentrations within typical agronomic ranges.

Monthly Influent (INF-001) monitoring was conducted on April 5th, 2016. All Influent sample results received indicated no unusual results and were within local limits.

Monthly Receiving Water (RSW) monitoring was conducted on April 5th, 2016. All receiving water sample results received indicated no unusual results and were within NPDES limits.

On April 11, 2016 a Notice of Violation was issued to the Napa State Hospital. Between March 14th and March 26th, 2016, the Napa State Hospital inadvertently discharged 15-20 gallons of the waste collection dental trap which contained significant concentrations of various heavy metals above NSD Local Limits. As a result, this facility was in noncompliance with the Sewer Use Code and was issued a Notice of Violation. A response to this violation has been provided by the user to the Napa Sanitation District on April 25, 2016.

RECYCLING:

Significant events in the Recycling Department for April 2016 include:

- Recycled water delivered for the month of April 2016 (25.377 million gallons), as compared to April 2015 (28.758 million gallons) is lower due to golf course and commercial landscape demand. Delivered recycled water volume represents the sum of all use site flow meter consumption values.
- Staff approved three recycled water service connections in the Los Carneros Water District and two in the Milliken-Sorco-Tulocay area.
- Staff provided annual Recycled Water User Supervisor refresher training. Participants were offered a tour of the Soscol Plant after the training.
- Staff suspended biosolids encapsulating and are preparing for land application activities to commence in May.

POLLUTION PREVENTION:

Significant events in the Pollution Prevention Department for April 2016 include:

- The Napa Safe Medication Collection Program collected 322 pounds of unneeded medications. The total amount of unneeded medications collected since program inception in September 2010 is 16,925.4 pounds.
- Staff gave 4 tours of the Soscol Water Recycling Facility to NVUSD students and 5 presentations.
- The District issued 19 Toilet Rebate @ \$100 each, for a total of \$1,900.
- The District issued 18 ESME Washer Rebates @ \$12.50 each for a total of @225.
- Staff also participated in Earth Day on Saturday, April 23rd and shared pollution prevention messages with attendees.

ENGINEERING / CAPITAL PROJECTS / DEVELOPMENT:

Significant events occurring in the Engineering Department for April 2016 include:

- Staff held a public bid opening for the ACP Lining Project No. 1B and awarded a construction contract.
- Staff developed a scope of work for a manhole rehabilitation project.
- The Board awarded the Sarco Creek Pipeline Replacement Project.
- The design engineer began design of the Browns Valley Trunk Project.
- Staff issued the Notice Inviting Bids for the Aeration Basin Diffusers, Instrumentation and Controls Project.
- The contractors continued construction of the following projects:
 - a. Basin "L" Pipeline Rehabilitation Project #5
 - b. Siphon Vault Hatch Replacement Project
 - c. Influent Pump Station Expansion Project.
 - d. LCWD Recycled Water Pipeline Project (punchlist).
 - e. Soscol Recycled Water Pump Station North-South Split Project.
- Staff reviewed 42 sets of development plans and deemed 20 sets of plans complete. The approved plans consisted of one public lateral, one residential lateral, two commercial laterals, four recycled water laterals, two demolitions, two residential dwellings, one commercial building and seven tenant improvements.

Budget Status & Cash Summary - July 1, 2015 - April 30, 2016 (83.3% of the year)

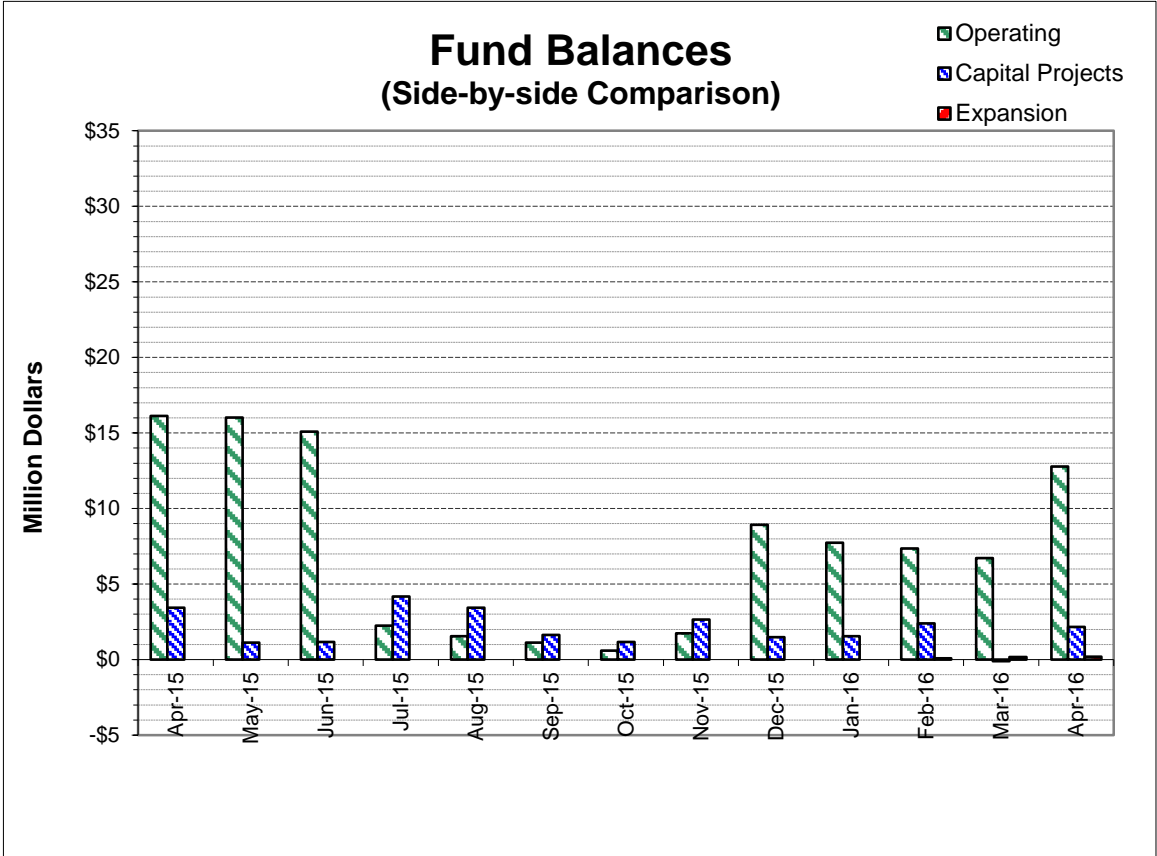
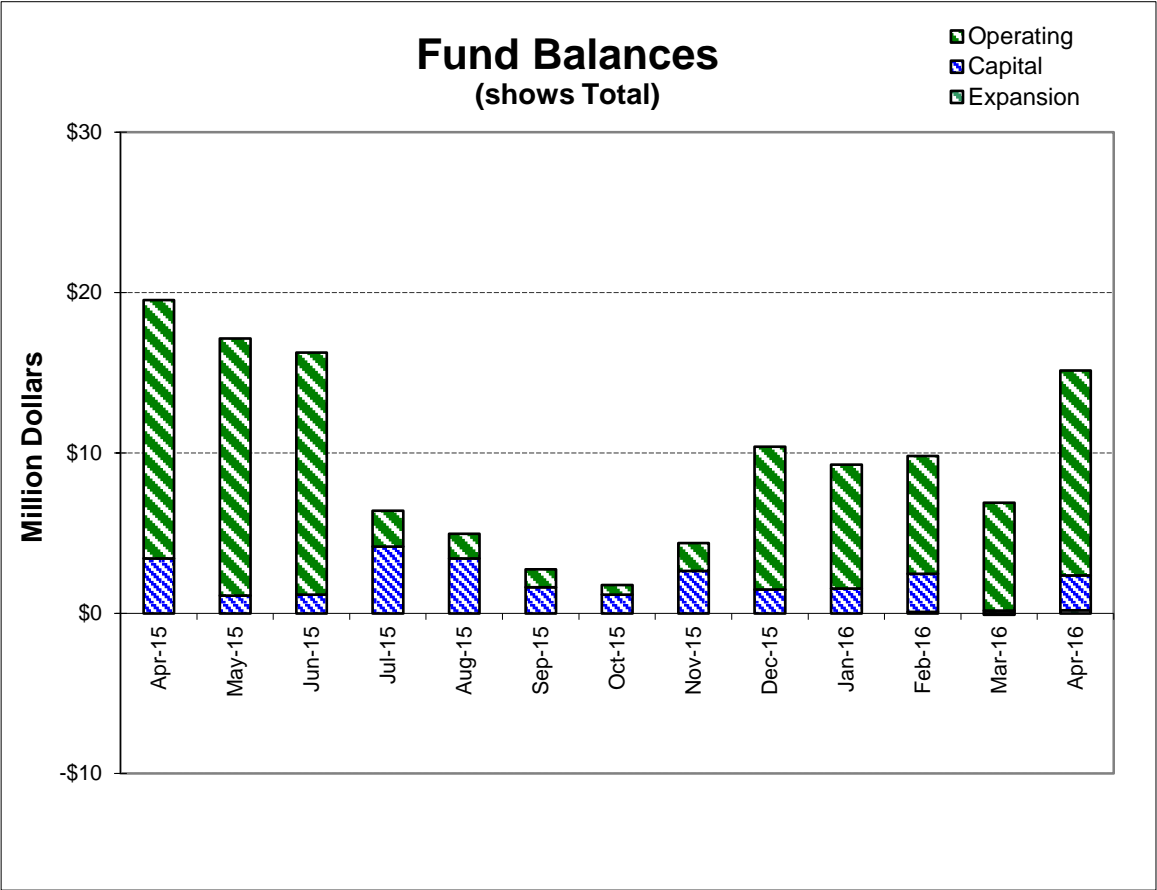
<i>Expenditures</i>	FY 15/16 Budget	Expenditures to date	Encumbrances	Committed to date	Remaining Balance	Percent Committed
<u>Operating</u>						
Salaries & Benefits	\$9,054,200	\$6,468,060	\$99	\$6,468,159	\$2,586,041	71.4%
Services & Supplies	5,884,450	3,890,359	484,395	4,374,754	1,509,696	74.3%
Taxes	28,250	24,995	-	24,995	3,255	88.5%
Debt Service	4,779,200	4,776,996	-	4,776,996	2,204 (1)	100.0%
Intrafund Transfers	7,900,000	7,900,000	-	7,900,000	- (2)	100.0%
Total Operating:	\$27,646,100	\$23,060,409	\$484,494	\$23,544,904	\$4,101,196 (3)	85.2%
<u>Capital</u>						
Bldgs/Improvements & Equip	\$33,448,000	\$21,263,877	\$4,009,145	\$25,273,022	\$8,174,978 (4)	75.6%
Intrafund Transfers	4,348,000	2,998,000	-	2,998,000	1,350,000	69.0%
Total Capital :	\$37,796,000	\$24,261,877	\$4,009,145	\$28,271,022	\$9,524,978	74.8%
Grand Total Expenditures:	\$65,442,100	\$47,322,287	\$4,493,639	\$51,815,926	\$13,626,174	79.2%

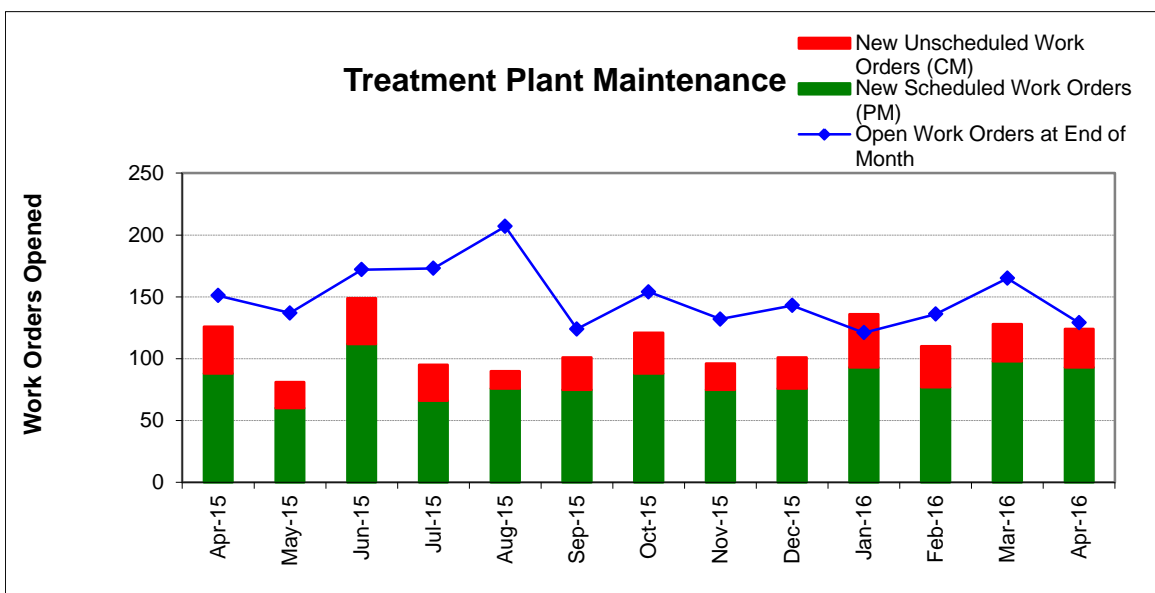
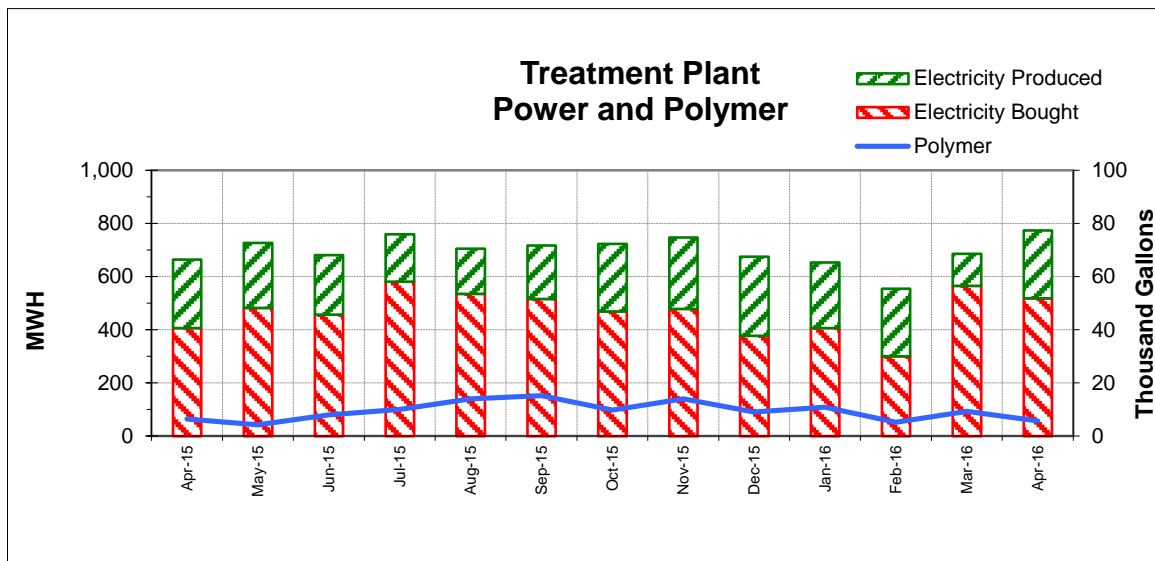
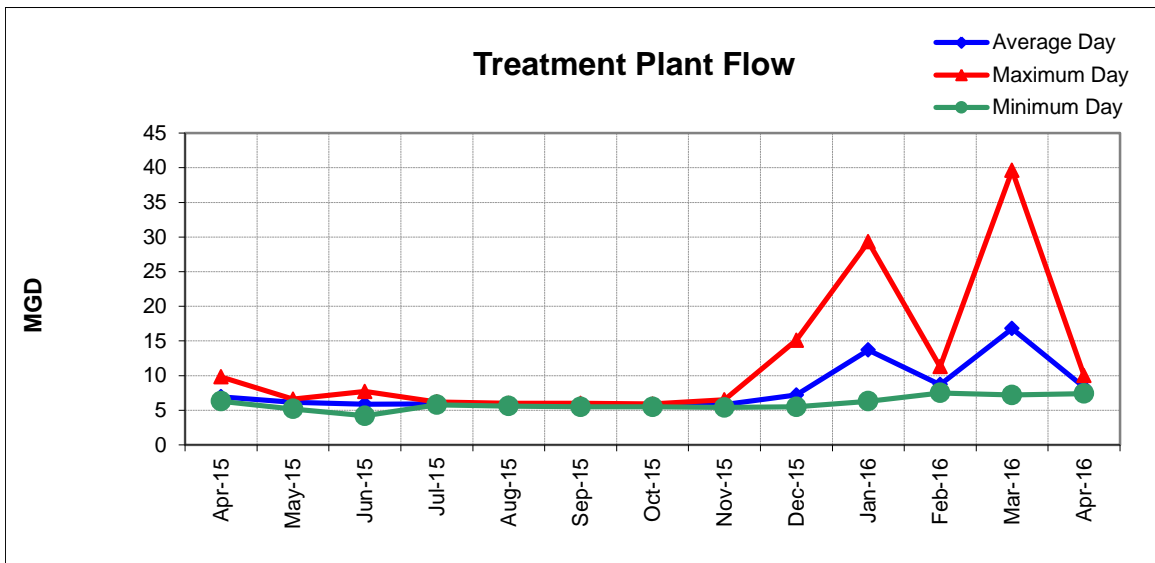
<i>Revenues</i>	FY 15/16 Budget	Collected to date	Encumbrances	Received to Date	Uncollected Revenue	Percent Collected
<u>Operating</u>						
Use of Money/Property	\$766,000	\$755,676		\$755,676	\$10,324	98.7%
Intergovernmental	\$0	\$13,466		13,466	(13,466)	N/A
Charges for Services	20,372,000	20,057,228		20,057,228	314,772	98.5%
Miscellaneous Revenues	143,000	65,482		65,482	77,518	45.8%
Donations/Contributions (Capital Labor)	-	620,902		620,902	(620,902) (5)	N/A
Total Operating:	\$21,281,000	\$21,512,754		\$21,512,754	(\$231,754)	101.1%
<u>Capital</u>						
Use of Money/Property	\$27,000	\$968		\$968	\$26,032 (6)	3.6%
Capacity Charges	2,998,000	2,866,838		2,866,838	131,162	95.6%
Intergovernmental	21,971,100	13,432,115		13,432,115	8,538,985	61.1%
Bond Proceeds	15,200,000	-		-	15,200,000	0.0%
Sale of Assets	-	134		134	(134)	N/A
Miscellaneous Revenues	-	27,925		27,925	(27,925)	N/A
Intrafund Transfers	12,248,000	10,898,000		10,898,000	1,350,000 (2)	89.0%
Total Capital:	\$52,444,100	\$27,225,981		\$27,225,981	\$25,218,119	51.9%
Grand Total Revenue:	\$73,725,100	\$48,738,735		\$48,738,735	\$24,986,365	66.1%

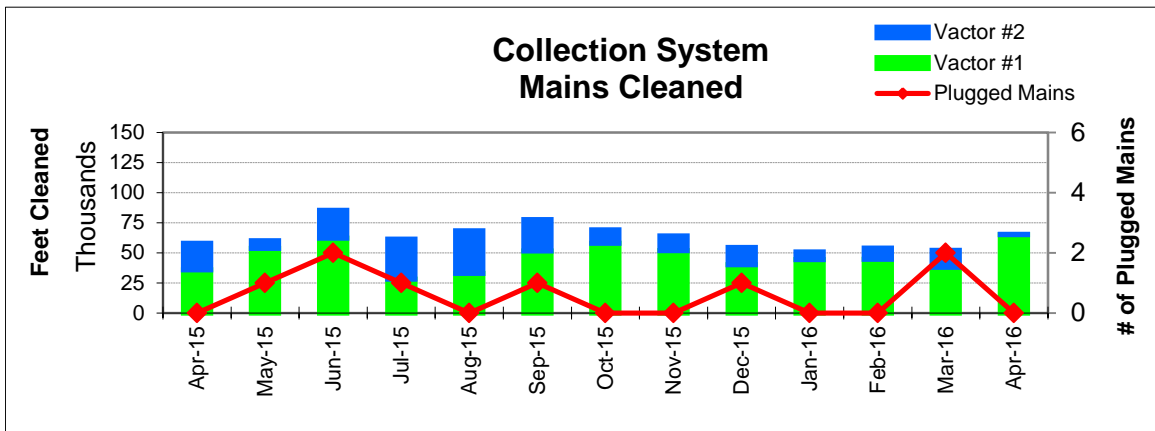
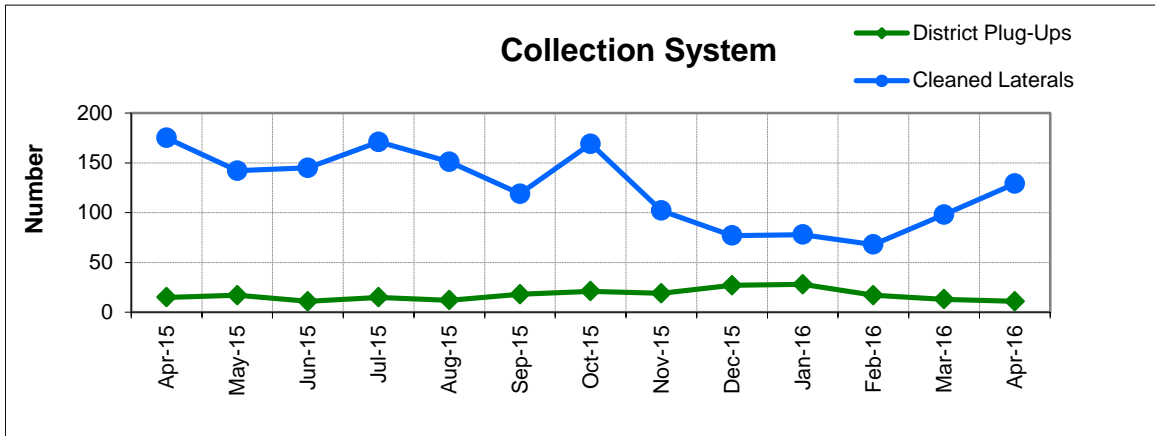
Cash on Hand as of 4/30/16 **\$15,138,237.43**

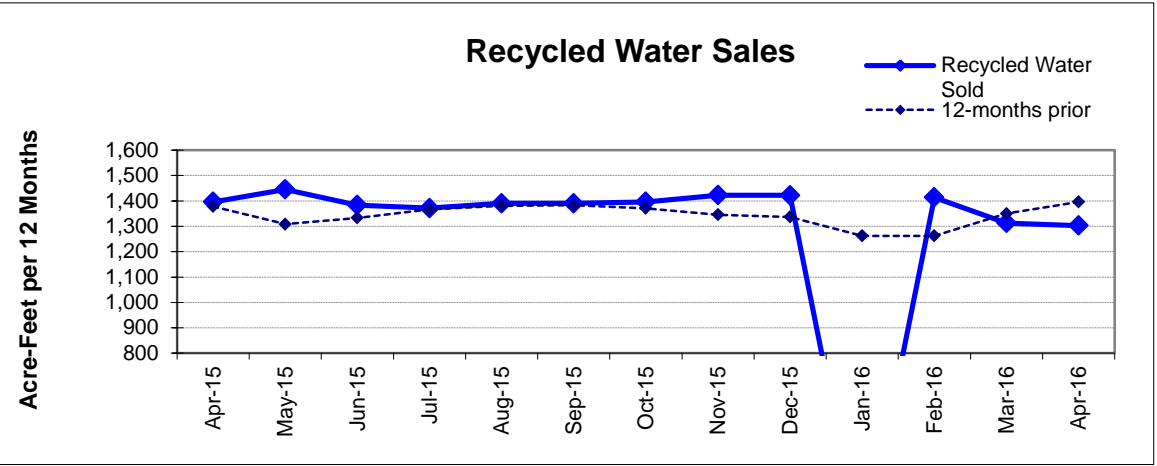
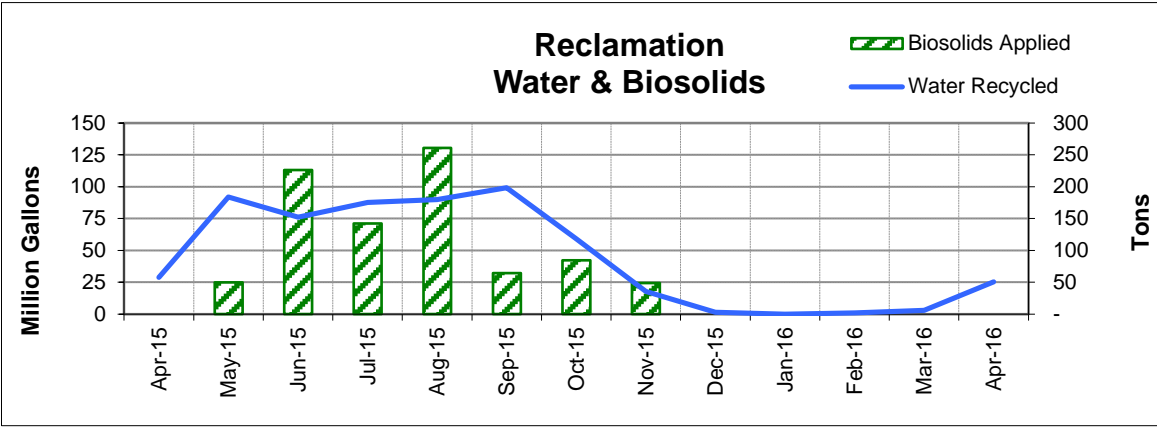
**excluding Debt Service restricted funds
4/30/16 -Effective Rate of Return = 0.72%

1. Series 2009B's and 2012A's principal/interest payments made in Jul & Jan
2. Processed intrafund transfer from Operating to Capital in July
3. Includes Debt Service and Intrafund Transfers; otherwise is 72.6%
4. See Capital Project Status report for details
5. In-house Labor for Capital Projects (Contra acct for Salaries)
6. Budget includes interest earned on bond proceeds which were assumed to be received in FY 15/16 . Alternative financing options have been considered.









FUND BALANCES - MONTHLY

CATEGORY	Apr-15	May-15	Jun-15	Jul-15	Aug-15	Sep-15	Oct-15	Nov-15	Dec-15	Jan-16	Feb-16	Mar-16	Apr-16
<i>(Thousand Dollars)</i>													
7800	16,120	16,018	15,096	2,241	1,548	1,119	598	1,739	8,920	7,737	7,347	6,726	12,775
7850	-	-	-	-	-	-	-	-	-	-	-	-	-
Subtotal Operating	16,120	16,018	15,096	2,241	1,548	1,119	598	1,739	8,920	7,737	7,347	6,726	12,775
Capital Improvement Projects	3,421	1,112	1,167	4,170	3,423	1,624	1,163	2,653	1,484	1,541	2,389	(96)	2,163
Debt Proceeds	6	6	6	-	-	-	-	-	-	-	-	-	-
Subtotal Capital	3,427	1,118	1,173	4,170	3,423	1,624	1,163	2,653	1,484	1,541	2,389	(96)	2,163
Total Discretionary Funds	19,547	17,136	16,269	6,411	4,971	2,743	1,761	4,392	10,404	9,278	9,736	6,630	14,938
Expansion Fund (Restricted)	-	-	-	-	-	-	-	-	-	-	85	168	200
Total Restricted Funds	-	-	-	-	-	-	-	-	-	-	85	168	200
TOTAL ALL FUNDS	19,547	17,136	16,269	6,411	4,971	2,743	1,761	4,392	10,404	9,278	9,821	6,798	15,138

DEVELOPMENT WORKLOAD - MONTHLY

CATEGORY	Apr-15	May-15	Jun-15	Jul-15	Aug-15	Sep-15	Oct-15	Nov-15	Dec-15	Jan-16	Feb-16	Mar-16	Apr-16
<u>Phone Requests</u>													
Maps/Drawings	3	3	2	6	8	10	6	14	5	9	9	9	8
Lateral Permits	-	-	-	-	-	-	-	-	-	-	-	-	-
Policy Questions	5	3	9	1	8	7	10	4	3	8	12	9	6
Development Questions	58	53	45	41	68	59	93	65	56	89	77	66	105
Miscellaneous	14	4	15	3	11	9	6	5	6	1	6	8	7
TOTAL	80	63	71	51	95	85	115	88	70	107	104	92	126
<u>Counter Requests</u>													
Maps/Drawings	-	1	3	1	2	2	1	2	1	3	3	2	5
Lateral Permits	9	7	13	6	9	9	15	10	14	15	11	8	10
Policy Questions		1	3	-	3	1	-	-	2	-	-	1	2
Development Questions	4	2	6	2	10	7	11	10	9	8	17	12	23
Miscellaneous	2	-	2	-	-	-	3	-	1	1	-	-	2
TOTAL	15	11	27	9	24	19	30	22	27	27	31	23	42
<u>Initial Request (Referrals)</u>	21	13	21	13	16	14	20	15	9	15	14	16	11
<u>Connection Permits Issued</u>													
Residential Permits	8	2	6	4	14	7	2	2	8	5	3	4	2
Commercial Permits	-	3	1	1	-	2	4	2	3	-	1	2	1
Industrial Permits	-			-			-		1	-	-	-	-
TOTAL PERMITS	8	5	7	5	14	9	6	4	12	5	4	6	3
Residential Units	8	5	7	5	14	7	2	2	8	12	4	11	2
Commercial Units	-	3	1	2	-	2	4	183	3	-	1	2	1
TOTAL UNITS	8	8	8	7	14	9	6	185	11	12	5	13	3
<u>Annexations</u>													
Submitted	-	-	1	-	-	-	-	2	1	-	-	-	-
Acreage	-	-	1.00	-	-	-	-	1.60	0.12	-	-	-	-
<u>Plans Reviewed</u>													
<u>Subdivisions/Sites</u>													
First Submittal	6	3	5	3	3	7	4	5	1	3	4	3	8
Second Submittal	2	4	1	2	1	1	3	3	-	-	1	4	3
Third Submittal	2	-	-	1	2	2	1	2	2	1	2	1	1
<u>Building/Tenant Improvements</u>													
First Submittal	5	5	8	7	15	15	17	19	13	9	2	16	21
Second Submittal	1	3	1	5	1	11	9	4	8	8	1	7	8
Third Submittal	1	3	1	1	-	3	3	9	5	4	1	3	1
<u>Miscellaneous Plan Reviews</u>													
		-	-	10	-	-	-	-	-	-	-	-	-
TOTAL PLANS REVIEWED	17	18	16	29	22	39	37	42	29	25	11	34	42

INSPECTION WORKLOAD - MONTHLY

CATEGORY	Apr-15	May-15	Jun-15	Jul-15	Aug-15	Sep-15	Oct-15	Nov-15	Dec-15	Jan-16	Feb-16	Mar-16	Apr-16
<u>CONSTRUCTION</u>													
Locating Sewers	-	-	-	-	-	-	-	-	-	3	-	-	-
Permit Processing	-	-	-	-	-	-	-	-	-	-	-	-	-
Preconstruction Meetings	1	1	-	3	4	-	1	1	2	4	6	6	8
Inspections - Mains	2	-	-	-	-	-	-	-	-	-	6	3	3
Inspections - Manholes	-	-	3	-	10	-	2	13	-	10	91	49	15
Inspections - Laterals	14	8	13	23	20	21	8	9	14	10	15	16	45
Inspections - Cleanouts	36	22	44	32	30	30	12	51	43	17	48	41	42
Inspections - Review Video	-	3	-	5	1	-	1	2	1	4	2	1	4
Demo - Septic Tanks	-	-	-	-	-	-	-	-	-	-	-	-	-
Demo - Buildings	2	1	-	-	-	-	1	-	-	-	1	3	-
Update Record Drawings	-	-	-	-	-	-	-	-	-	-	-	-	-
TOTAL	55	35	60	63	65	51	25	76	60	48	169	119	117
<u>MISCELLANEOUS</u>													
Meter Readings	-	-	11	-	9	-	-	15	33	-	-	10	-
Washdown Facility Inspections	1	-	-	-	-	-	11	-	-	-	-	-	-
General Customer Assistance	-	-	-	11	5	19	20	4	3	7	36	37	16
City of Napa Water Discharge	-	-	-	-	-	-	-	-	-	-	-	-	-
TOTAL	1	-	11	11	14	19	31	19	36	7	36	47	16
<u>SPECIAL PROJECTS</u>													
	21	20	22	21	21	21	18	5	6	-	3	-	15

POLLUTION PREVENTION WORKLOAD - MONTHLY

CATEGORY	Apr-15	May-15	Jun-15	Jul-15	Aug-15	Sep-15	Oct-15	Nov-15	Dec-15	Jan-16	Feb-16	Mar-16	Apr-16
<u>Outreach Activities</u>													
Plant Tours Conducted	-	2	1	1			1	2	1	3	2	1	4
Presentations Made	-	0					0	0	0	0	1	1	5
Total Outreach Activities	-	2	1	1	-	-	1	2	1	3	3	2	9
<u>Inspections Conducted</u>													
Food Service Facilities	31	20	2	1	-	7	1	-	10	24	30	31	19
Auto Body & Car Wash	-	-	-	-	-	-	-	-	-	-	-	-	-
Other	-	-	-	-	-	-	-	-	-	-	-	1	1
Total Inspections	31	20	2	1	-	7	1	-	10	24	30	32	20
<u>Compliance Issues</u>													
NOVs Issued	-	2	4	2	1	2	1	3	1	2	-	1	2
NOEs Issued	-	1	-	-	-	-	1	1	1	-	-	-	1
Non-Compliant-FOG	-	-	-	-	-	-	-	-	-	-	1	-	-
Total Compliance Issues	-	3	4	2	1	2	2	4	2	2	1	1	3
<u>Pollution Prevention</u>													
Clothes Washer Rebates	-	56	48	-	-	12	-	8	27	12	10	-	18
Toilet Retrofit Rebates	10	17	39	15	9	35	17	19	21	1	6	22	19
Pharmaceuticals Diverted (in lbs)	240	190	286	326	293	213	305	199	166	556	341	341	322

RECYCLED WATER DELIVERIES - MONTHLY

	Acres	Apr-15	May-15	Jun-15	Jul-15	Aug-15	Sep-15	Oct-15	Nov-15	Dec-15	Jan-16	Feb-16	Mar-16	Apr-16
MONTHLY (MG)														
Water Sold														
Golf Courses	405.0	18.319	56.967	47.679	55.514	53.870	41.120	20.985	2.744	0.795	-	0.027	0.070	13.197
Cemeteries	5.0	0.526	0.546	0.728	0.786	0.740	0.854	0.448	0.082	-	-	0.145	0.000	0.015
Parks	18.5	0.344	0.647	0.842	1.191	1.132	0.858	0.415	0.086	-	-	-	-	0.036
Schools	21.0	1.044	1.455	2.035	2.020	2.042	1.827	1.119	0.382	0.088	-	0.040	0.075	0.360
Commerical	167.6	8.038	9.008	11.160	15.188	14.433	13.091	10.945	4.335	0.609	-	0.346	2.430	6.403
Vineyards	564.0	0.432	0.418	2.066	0.730	0.325	0.441	0.396	10.205	0.045	-	0.446	0.365	5.268
Trucked Water	175.0	0.065	0.131	0.200	0.306	0.269	0.333	0.473	0.039	0.020	-	0.010	0.018	0.098
Subtotal Sales	1,356.1	28.768	69.172	64.710	75.734	72.811	58.524	34.780	17.872	1.556	-	1.012	2.958	25.377
District Use														
Jameson	330.0	-	-	-	-	3.103	16.280	14.046	-	-	-	-	0.084	-
Somky	213.0	-	22.807	11.474	11.844	14.068	24.405	10.220	-	-	-	-	-	-
Fagundes/Airport	50.5	-	-	-	-	-	-	-	-	-	-	-	-	-
Subtotal District	593.5	-	22.807	11.474	11.844	17.171	40.685	24.266	-	-	-	-	0.084	-
TOTAL DELIVERED	1,949.6	28.768	91.979	76.184	87.578	89.981	99.209	59.046	17.872	1.556	-	1.012	3.042	25.377
ANNUAL (AF)														
Water Sold														
Golf Courses	405.0	981	1,038	984	977	1,002	998	1,001	997	1,000		999	915	899
Cemeteries	5.0	15	15	15	15	15	16	15	15	15		15	15	13
Parks	18.5	14	13	13	13	14	16	17	17	17		17	17	16
Schools	21.0	43	42	40	39	39	39	40	40	40		40	37	35
Commerical	167.6	308	303	293	289	286	287	293	295	294		286	275	270
Vineyards	564.0	18	18	24	24	24	25	21	51	49		50	49	64
Trucked Water	175.0	17	16	15	15	11	9	9	8	7		6	6	6
Subtotal Sales	1,356.1	1,396	1,445	1,384	1,372	1,390	1,391	1,396	1,423	1,422	-	1,414	1,313	1,303
District Use														
Jameson	330.0	187	167	154	121	101	122	103	103	103		103	103	103
Somky	213.0	253	274	258	270	270	305	291	291	291		291	291	291
Fagundes/Airport	50.5	-	-	-	-	-	-	-	-	-		-	-	-
Subtotal District	593.5	441	441	411	390	371	427	394	394	394	-	394	394	394
TOTAL DELIVERED	1,949.6	1,837	1,886	1,795	1,762	1,761	1,818	1,790	1,816	1,816	-	1,807	1,707	1,697

BIOSOLIDS HANDLING - MONTHLY

Site	Apr-15	May-15	Jun-15	Jul-15	Aug-15	Sep-15	Oct-15	Nov-15	Dec-15	Jan-16	Feb-16	Mar-16	Apr-16
<u>Land Applied by NSD</u>													
Somky													
Airport/Fagundes													
Jameson Canyon	-	50	226	142	261	64	84	49	-	-	-	-	-
Subtotal by NSD	-	50	226	142	261	64	84	49	-	-	-	-	-
<u>Land Applied by Contractor</u>													
Somky													
Airport/Fagundes													
Jameson Canyon													
Subtotal by Contractor	-	-	-	-	-	-	-	-	-	-	-	-	-
Total Land Applied	-	50	226	142	261	64	84	49	-	-	-	-	-
Off Site (Contractor)													
<hr/>													
Total (tons)	-	50	226	142	261	64	84	49	-	-	-	-	-

COLLECTION SYSTEM MAINTENANCE - MONTHLY

CATEGORY	Apr-15	May-15	Jun-15	Jul-15	Aug-15	Sep-15	Oct-15	Nov-15	Dec-15	Jan-16	Feb-16	Mar-16	Apr-16
<u>Plugups</u>													
Total Calls	44	48	30	47	47	63	57	53	69	78	58	43	41
Business Hours	24	32	14	33	29	37	35	29	40	40	42	22	31
After Hours	20	16	16	14	18	26	22	24	29	38	16	21	10
District's	15	17	11	15	12	18	21	19	27	28	17	13	11
Property Owner's	29	31	19	32	35	45	36	34	42	50	39	30	30
Plugged Main Lines		1	2	1		1			1			2	
Run Lateral w/Eel	175	142	145	171	151	119	169	102	77	78	68	98	129
<u>Cleaning (feet of sewer)</u>													
Vactor #1	36,091	53,851	62,212	28,193	32,946	51,755	57,917	51,959	40,292	44,407	44,811	38,201	65,231
Vactor #2	21,993	6,291	23,155	33,397	35,318	26,032	11,147	12,224	14,325	6,329	9,199	14,073	325
Hydro													
Rodder											650		
Total (feet)	58,084	60,142	85,367	61,590	68,264	77,787	69,064	64,183	54,617	50,736	54,660	52,274	65,556
<u>Cleaning Days</u>	22	20	27	20	22	24	25	22	23	18	21	17	19
Vactor #1	14	17	19	10	10	14	19	16	18	16	13	14	18
Vactor #2	8	3	8	10	12	10	6	6	5	2	7	3	1
Hydro													
Rodder											1		
<u>Feet/day</u>	2,650	3,000	3,150	3,100	3,100	3,250	2,750	2,900	2,350	2,800	2,600	3,050	3,450
Vactor #1	2,600	3,150	3,250	2,800	3,300	3,700	3,050	3,250	2,250	2,800	3,450	2,750	3,600
Vactor #2	2,750	2,100	2,900	3,350	2,950	2,600	1,850	2,050	2,850	3,150	1,300	4,700	350
Hydro													
Rodder											650	222	
<u>Video Inspections</u>													
Mains (feet)	16,913	8,481	4,497	4,273	11,613	6,577	12,031	8,137	7,248	6,583	9,718	12,343	8,670
Laterals (each)	228	198	175	224	185	194	230	159	173	175	131	154	181
<u>Construction (each)</u>													
Cleanouts	20	9	12	14	12	10	7	10	23	22	20	13	17
Laterals	13	17	11	6	4	8		2	2	5	8		4
Mains							1			1			2
Manholes						1	1						
Other													
<u>USA Markings</u>													
Regular (w/in 2 days)	232	224	291	306	256	267	251	218	178	222	281	247	270
Emergency (w/in 2 hours)	10	6	17	9	11	13	13	8	16	21	8	13	5

WASTEWATER PLANT OPERATIONS DATA - MONTHLY

[illegible]

WASTEWATER PLANT MAINTENANCE and LABORATORY DATA - MONTHLY

CATEGORY	Apr-15	May-15	Jun-15	Jul-15	Aug-15	Sep-15	Oct-15	Nov-15	Dec-15	Jan-16	Feb-16	Mar-16	Apr-16
<u>Scheduled</u>													
Old	81	71	67	92	90	127	50	74	66	78	39	55	77
New	88	60	112	66	76	75	88	75	76	93	77	98	93
Completed	98	64	87	68	39	152	64	83	64	132	61	76	104
New Balance	71	67	92	90	127	50	74	66	78	39	55	77	66
<u>Unscheduled</u>													
Old	84	80	70	80	83	80	74	80	66	65	82	81	88
New	38	21	37	29	14	26	33	21	25	43	33	30	31
Completed	42	31	27	26	17	32	27	35	26	26	34	23	56
New Balance	80	70	80	83	80	74	80	66	65	82	81	88	63
<u>Total Work Orders</u>													
Old	165	151	137	172	173	207	124	154	132	143	121	136	165
New	126	81	149	95	90	101	121	96	101	136	110	128	124
Completed	138	94	114	94	56	193	93	118	90	158	95	99	160
New Balance	151	137	172	173	207	124	154	132	143	121	136	165	129
<u>LAB ANALYSES</u>													
<u>Sample Type</u>													
Regulatory	475	372	359	367	382	342	346	408	408	315	281	325	392
Process Control	1,346	826	760	871	881	843	791	1,310	1,258	1,288	1,157	1,276	1,235
Special Request	-	32	26	132	333	554	174	299	235	60	17	1	5
Quality Control/Assurance	500	5	8	37	12	5	7	302	302	372	500	306	349
TOTAL	2,321	1,235	1,153	1,407	1,608	1,744	1,318	2,319	2,203	2,035	1,955	1,908	1,981

**Summary of NSD Capital Project Status
through 4/30/16**

Proj #	Description	FY 15-16 Budget	FY 14-15 Carryovers	Adj.	Final FY 15-16 Budget	Encumbrance	Costs Paid to Date	Budget Remaining	% Budget Expended
<u>COLLECTION SYSTEM</u>									
13701	Main Line Sewer Rehab	84,900			84,900	-	27,124	57,776	32%
13702	Manhole Raising/Rehab	185,500			185,500	34,564	146,649	4,287	79%
13703	Lateral Replacement/Rehab	69,200			69,200	1,646	55,512	12,042	80%
13704	Cleanouts Installation/Rehab	76,400			76,400	3,650	65,312	7,437	85%
13705	I&I Reduction Program	130,000		17,000	147,000	141,169	1,884	3,947	1%
14701	Basin L - I&I Reduction Project 4	3,600,000	(1,423,400)		2,176,600	11,187	1,598,353	567,060	73%
14703	Browns Valley Rd & First St	1,339,000	23,450		1,362,450	1,086,655	221,202	54,594	16%
15701	Upper Lateral Rehabilitation - Basin L	175,000	45,300		220,300	18,045	101,400	100,855	46%
15703	Sarco Creek Pipeline Replacement - CalTRANS	82,400	19,450	205,000	306,850	179,259	102,633	24,959	33%
15704	Siphon Rehabilitation #1	5,000			5,000	-	-	5,000	-
15721	ACP CIPP Lining Project #1	1,000,000	47,300	(343,500)	703,800	-	293,481	410,319	42%
16701	Basin L - I&I Reduction Project 5	800,000			800,000	735,376	37,080	27,545	5%
16702	Collection System Master Plan Amendment	250,000		(250,000)	-	-	-	-	-
16703	Cleanout Replacement - Basin L (Pilot)	10,000			10,000	-	-	10,000	-
16704	Manhole Rehab - Basin L (Pilot)	10,000			10,000	-	9,833	167	98%
16705	Siphon Rehab #2 - S. Terrace	5,000			5,000	-	-	5,000	-
16718	NN Siphon Vault Cover Replacement	-		75,000	75,000	45,000	50	29,950	0%
<u>COLLECTION SYSTEM - EQUIPMENT</u>									
15720	Vehicle - 173B - F350	-	57,500		57,500	-	55,119	2,381	96%
16706	Locatable Mini-Camera #1 Replacement	10,300			10,300	-	-	10,300	-
16720	Manhole Portable Flowmeter	-		15,000	15,000	-	12,387	2,613	83%
<u>LIFT STATIONS</u>									
16707	West Napa PS - Long Term Planning Study	75,000			75,000	-	-	75,000	-
<u>TREATMENT</u>									
13713	Pond Aeration	-	5,000		5,000	801	2,921	1,278	58%
13714	Phase I Recycled Water Expansion	-	353,000	115,000	468,000	4,983	458,143	4,874	98%
16708	Algae to Digester with Thermal Study	60,000			60,000	34,846	765	24,389	1%
16709	Carbon/Energy Efficiency Improvements	100,000			100,000	-	-	100,000	-
<u>TREATMENT - EQUIPMENT</u>									
13715	Spare Digester Mixer	-	187,150		187,150	986	64,720	121,445	35%

**Summary of NSD Capital Project Status
through 4/30/16**

Proj #	Description	FY 15-16 Budget	FY 14-15 Carryovers	Adj.	Final FY 15-16 Budget	Encumbrance	Costs Paid to Date	Budget Remaining	% Budget Expended
13741	Secondary PS Pump Rebuild (3)	-	35,000		35,000	-	27,794	7,206	79%
14707	Solids Handling Improvements	-	72,800		72,800	-	17,971	54,829	25%
14718	Maint - Stationary Gas Detector Replacement	50,000	123,450		173,450	-	127,602	45,848	74%
14720	Belt Press Polymer Skid Replacement	-	60,000	10,000	70,000	65,772	-	4,228	-
14723	Vehicle 162 - Ford F250 Diesel	-	30,000		30,000	-	-	30,000	-
15709	Effluent Overflow Meter	-	126,800		126,800	-	58,430	68,370	46%
15711	Rotork Actuator Replacement	-	52,750		52,750	6,200	-	46,550	-
15712	Rehabilitate Pond 1 Storage Structure	-	5,000		5,000	-	-	5,000	-
15713	Aeration Basin Instrumentation and Control	-	49,850	126,000	175,850	56,190	118,340	1,320	67%
16710	Sampler 3710FR Replacement	6,300			6,300	-	-	6,300	-
16711	Waterbath	5,200		500	5,700	5,343	-	357	-
16712	Primary Clarifier Mech/Struct Rehabilitation	40,000		3,000	43,000	-	41,000	2,000	95%
16713	Buried Metalic Piping (eval/rehab)	10,000			10,000	-	-	10,000	-
16714	High Voltage System Repairs	30,000			30,000	-	-	30,000	-
16715	Cogen Bottom End Overhaul	150,000			150,000	-	-	150,000	-
16719	Tractor Tracks (2)	-		20,000	20,000	-	15,638	4,362	78%
16721	Tractor Attachment	-		7,000	7,000	-	5,716	1,284	82%
<u>TREATMENT - STRUCTURES</u>									
13724	IPS Expansion	-	1,144,100		1,144,100	104,563	980,200	59,337	86%
<u>SCADA</u>									
13725	SCADA Server Replacement	-	35,050		35,050	-	32,440	2,610	93%
<u>RECYCLING - DISTRICT</u>									
15717	Isolation Valve on Kirkland Line (Devlin Rd)	-	14,650		14,650	-	-	14,650	-
16716	Line Recycled Water Reservoir	45,000			45,000	-	15,367	29,633	34%
<u>RECYCLING - EXPANSION</u>									
13727	North Bay Wate Reuse Project	524,550			524,550	-	495,858	28,692	95%
14726	MST RW Pipeline Construction	4,000,000	1,922,050		5,922,050	675,781	4,458,626	787,644	75%
14727	Split N/S Lines, surge protection	2,300,000	97,150		2,397,150	120,944	2,000,974	275,232	83%
15718	LCWD Recycled Water Pipeline - Construction	15,000,000	(94,850)		14,905,150	676,187	9,417,215	4,811,748	63%

OTHER

**Summary of NSD Capital Project Status
through 4/30/16**

Proj #	Description	FY 15-16 Budget	FY 14-15 Carryovers	Adj.	Final FY 15-16 Budget	Encumbrance	Costs Paid to Date	Budget Remaining	% Budget Expended
13729	Development Technical Support	220,700			220,700	-	196,141	24,559	89%
16717	Admin/Engineering Bldg - Acoustic Improvements	10,000			10,000	-	-	10,000	-
GRAND TOTAL ALL PROJECTS		\$30,459,450	\$2,988,550	-	\$33,448,000	\$4,009,145	\$21,263,877	\$8,174,977	64%

This page intentionally left blank.