



Napa Sanitation District

General Manager's Report

for

March, 2016

Contents:

- a. Transmittal Memo
- b. Budget Status and Cash Summary
- c. Key Information Graphs – Fund Balances, Treatment Plant and Collection
- d. Fund Balances
- e. Development Processing
- f. Construction Inspection
- g. Pollution Prevention
- h. Recycled Water Deliveries
- i. Biosolids Handling
- j. Collection System Maintenance
- k. Treatment Plant Operations
- l. Treatment Plant Maintenance & Laboratory
- m. Capital Project Expenditure Summary



NAPA SANITATION DISTRICT

General Manager's Report

Dedicated to Preserving the Napa River for Generations to Come

DATE: May 4, 2016

FROM: Timothy B. Healy, General Manager

SUBJECT: General Manager's Report for March, 2016

REGULATORY COMPLIANCE:

Collection System Compliance:	3 Category 1 SSO's, 0 Category 2 SSO's and 2 Category 3 SSO's
NPDES Permit (WWTP) Compliance:	Full compliance with all regulations
Air Quality Compliance:	Full compliance with all regulations
Recycled Water Compliance:	Full compliance with all regulations
Biosolids Compliance:	Full compliance with all regulations
Significant Comments:	None

FISCAL STATUS:

Period Covered:	July 1, 2015 – March 31, 2016
Percent Fiscal Year:	75.0%
Operating Expenditures to date:	81.7%
Historical Expenditures to date:	76.4%
Significant Comments:	In prior years, the intrafund transfers from Operating to Capital were done quarterly. However, for cash flow purposes, the entire transfer of \$7,900,000 was processed early in the fiscal year. This caused the "Operating Expenditures to date" to reflect a higher percentage. If the entire transfer was not included, the "Operating Expenditures to date" would be 74.6%.

PERSONNEL:

Significant events for the month of March 2016 in the Human Resources Department:

New Hires:	Kyle Tahsler
Separations:	None
Promotions:	None
Recruitment Activities:	None
Injuries:	None

Summaries of Operational Highlights are on following pages.

COLLECTIONS:

Significant events for the month of March 2016 in Collection System Maintenance include:

- The District had 3 Category 1 Sanitary Sewer Overflows (SSO's), 0 Category 2 SSO's and 2 Category 3 SSO's during the month. (A Category 1 is defined as an SSO that reached a drainage channel and/or surface water or; an SSO that reached a storm drain pipe that was not fully recovered and returned to the sanitary sewer system. A Category 2 is defined as an SSO that is equal to or greater than 1,000 gallons that did not reach a surface water. A Category 3 is defined as an SSO that is less than 1,000 gallons that did not reach a surface water. These are usually minor overflows of less than 10 gallons from cleanouts on District laterals that can be cleaned up by the crews.)
- The repair crew installed 5 cleanouts, performed 9 sewer lateral repairs and 2 main line repairs. Additionally, the service response programs crew completed 58 work orders in support of the grease and odor control program and closed out 260 mark and locate request tickets.
- The preventative maintenance crews ran work orders on 98 laterals, cleaned approximately 52,274 feet of main line and CCTV inspected approximately 12,497 feet of main line and lower laterals.

TREATMENT PLANT:

Significant events for the month of March 2016 in the Treatment Plant Department:

Plant Operations

- For March 2016, the plant's influent flow was 520.1 MG as compared to last year flow for March 2015 of 216.7 MG
- Total flow to the Napa River for March 2016 was 474.4 MG as compared to March 2015 flow of 146.5 MG.
- The production of recycle quality occurred for 3 days during March 2016 with a total flow of 4.2MG.
- This March power consumption purchased from PG&E was 566 MWH in comparison to March 2015 purchase of 417 MWH.
- There was 5.87" rain fall for March 2016 as compared to 0.0" rain fall for March 2015.
- Pond 4 end of the month recorded level reading was 50.24" as compared to March 2015 of 39.03". Total remaining pond capacity for March 2016 was 39.7% as compared to March 2015 remaining capacity of 47.3%.

MAINTENANCE:

Significant events for the month of March, 2016

Cogeneration Performance

- Cogeneration unit ran 377 of 744 hours for the month – 50.67% uptime, averaging 152.22 Kw

Process Maintenance

- Cogeneration unit monthly emission test - in compliance with BAAQMD permit.
- Septage sump pump #2, replaced discharge check valve
- Replaced FOG mix pumps isolation valves
- Replaced Headworks sump pump 061
- Installed new refrigeration module, Headworks Lab Sampler
- Replaced D/O module in PLC #2 remote #2
- Replaced VFD for DAFT Overflow Pump #1
- Replaced Analog Module on Neuros Blower #2 PLC
- Replaced SB-1 48 VDC Battery Charger and implemented battery life monitoring in SCADA
- Cogen Service;
 - Compression test
 - Valve adjustment
 - Replaced # 2 Cylinder Head
 - Replaced cooling jacket gaskets for #2 & 3 Cylinder Heads
 - Installed 6 new admission valves
 - Installed 6 new spark plugs
 - Installed 2 new coils
 - Installed 6 new coil leads
 - Replaced 24V Cogen engine cranking battery charger

Projects

- Tested and serviced breakers, checked setting in all protective relays in SB-1 switchgear

Standby Power

- Plant generators operational testing only
- Riverpark, Stonecrest, West Napa operational testing only

Influent Pumps

- Pumps 230 & 220 down 48 hours due to high moisture trip
- Rest of pumps operational

Laboratory

Monthly Effluent (EFF-001) monitoring was conducted on March 3rd, 2016. All Effluent sample results received indicated were within NPDES limits.

- The Effluent enterococcus result for March 22, 2016 indicated an elevated sample result of 36.8MPN/ 100mL. Sample results were accepted based on quality control criteria and the Napa Sanitation did not violate the NPDES permit geometric mean limit of 35 MPN/ 100mL. The March 2016 geometric mean result is 3.31 MPN/ 100mL.

Monthly Influent (INF-001) monitoring was conducted on March 3rd, 2016. All Influent sample results received indicated no unusual results and were within local limits, except those provided below.

- The Influent Sodium concentration collected on March 3, 2016 indicated 110mg/L which is above the Napa Sanitation District Local Limit of 90mg/L.

RECYCLING:

Significant events in the Recycling Department for March 2016 include:

- Recycled water delivered for the month of March 2016 (3.042 million gallons), as compared to March 2015 (35.747 million gallons) is lower due to golf course and commercial landscape demand. Delivered recycled water volume represents the sum of all use site flow meter consumption values.
- Staff coordinated cross connection testing for Los Carneros Water District recycled water customers.
- Staff continued biosolids encapsulating due to wet weather conditions.

POLLUTION PREVENTION:

Significant events in the Pollution Prevention Department for February 2016 include:

- The Napa Safe Medication Collection Program collected 341 pounds of unneeded medications. The total amount of unneeded medications collected since program inception in September 2010 is 16,603.8 pounds.
- Staff gave one (1) tour of the Soscol Water Recycling Facility to Napa Valley CanDo and one presentation.
- The District issued 22 Toilet Rebate @ \$100 each, for a total of \$2,200.
- The District issued 0 ESME Washer Rebates.

ENGINEERING / CAPITAL PROJECTS / DEVELOPMENT

Significant events occurring in the Engineering Department for March 2016 include:

- Staff conducted a conceptual review and preliminary cost estimate for the Recycled Water Reservoir Liner Project.
- Staff designed and issued notice inviting bids for the ACP Lining Project No. 1B.
- Staff issued notice to proceed, held a pre-construction meeting, and reviewed submittals for the Siphon Vault Hatch Replacement Project.
- Staff held a pre-construction meeting, produced conformed construction documents, and reviewed submittals for the Basin "L" Pipeline Rehabilitation Project #5.
- Staff inspected manholes for infiltration and collected samples for chloride analysis.
- Staff developed a scope of work for a manhole rehabilitation project.
- Staff opened bids for the Sarco Creek Pipeline Replacement Project.
- Staff continued preliminary design of the Browns Valley Trunk Project.
- Staff continued design of the Aeration Basin Diffusers, Instrumentation and Controls Project.
- The contractors continued construction of the following projects:
 - a. Influent Pump Station Expansion Project.
 - b. LCWD Recycled Water Pipeline Project (punchlist).
 - c. Soscol Recycled Water Pump Station North-South Split Project.
- The District accepted completion of the following projects:
 - a. MST Recycled Water Pump Station Project.
 - b. MST Recycled Water Pipeline Project.
- Staff reviewed 34 sets of development plans and deemed 12 sets of plans complete. The approved plans consisted of one public lateral, one residential lateral, two recycled water laterals, two residential dwellings and six tenant improvement.

Budget Status & Cash Summary - July 1, 2015 - March 31, 2016 (75.0% of the year)

<i>Expenditures</i>	FY 15/16 Budget	Expenditures to date	Encumbrances	Committed to date	Remaining Balance	Percent Committed
<u>Operating</u>						
Salaries & Benefits	\$9,054,200	\$5,835,530	\$1,114	\$5,836,645	\$3,217,555	64.5%
Services & Supplies	5,884,450	3,412,885	659,082	4,071,967	1,812,483	69.2%
Taxes	28,250	12,497	-	12,497	15,753	44.2%
Debt Service	4,779,200	4,776,996	-	4,776,996	2,204 (1)	100.0%
Intrafund Transfers	7,900,000	7,900,000	-	7,900,000	- (2)	100.0%
Total Operating:	\$27,646,100	\$21,937,909	\$660,197	\$22,598,106	\$5,047,994 (3)	81.7%
<u>Capital</u>						
Bldgs/Improvements & Equip	\$33,448,000	\$18,123,774	\$5,448,860	\$23,572,634	\$9,875,366 (4)	70.5%
Intrafund Transfers	4,348,000	2,998,000	-	2,998,000	1,350,000	69.0%
Total Capital :	\$37,796,000	\$21,121,774	\$5,448,860	\$26,570,634	\$11,225,366	70.3%
Grand Total Expenditures:	\$65,442,100	\$43,059,683	\$6,109,056	\$49,168,740	\$16,273,360	75.1%

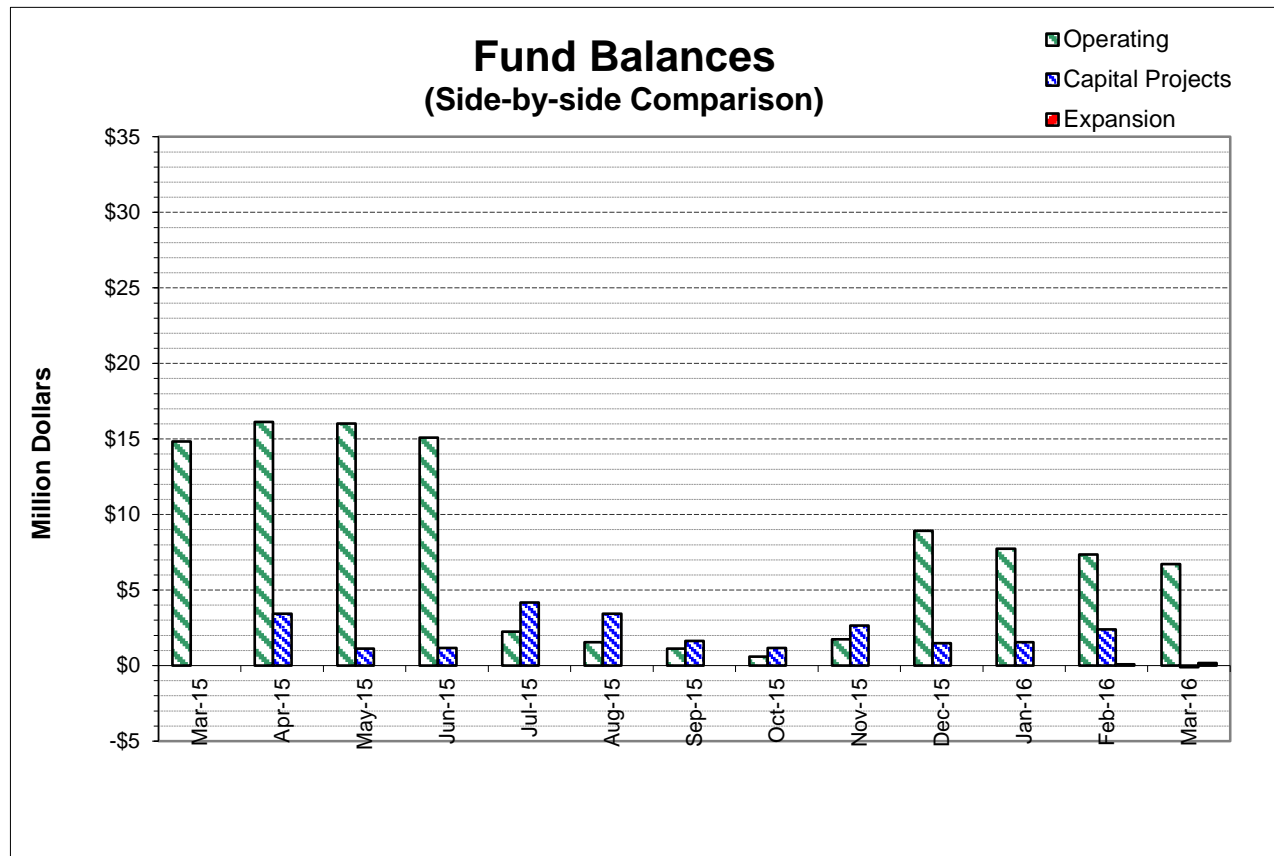
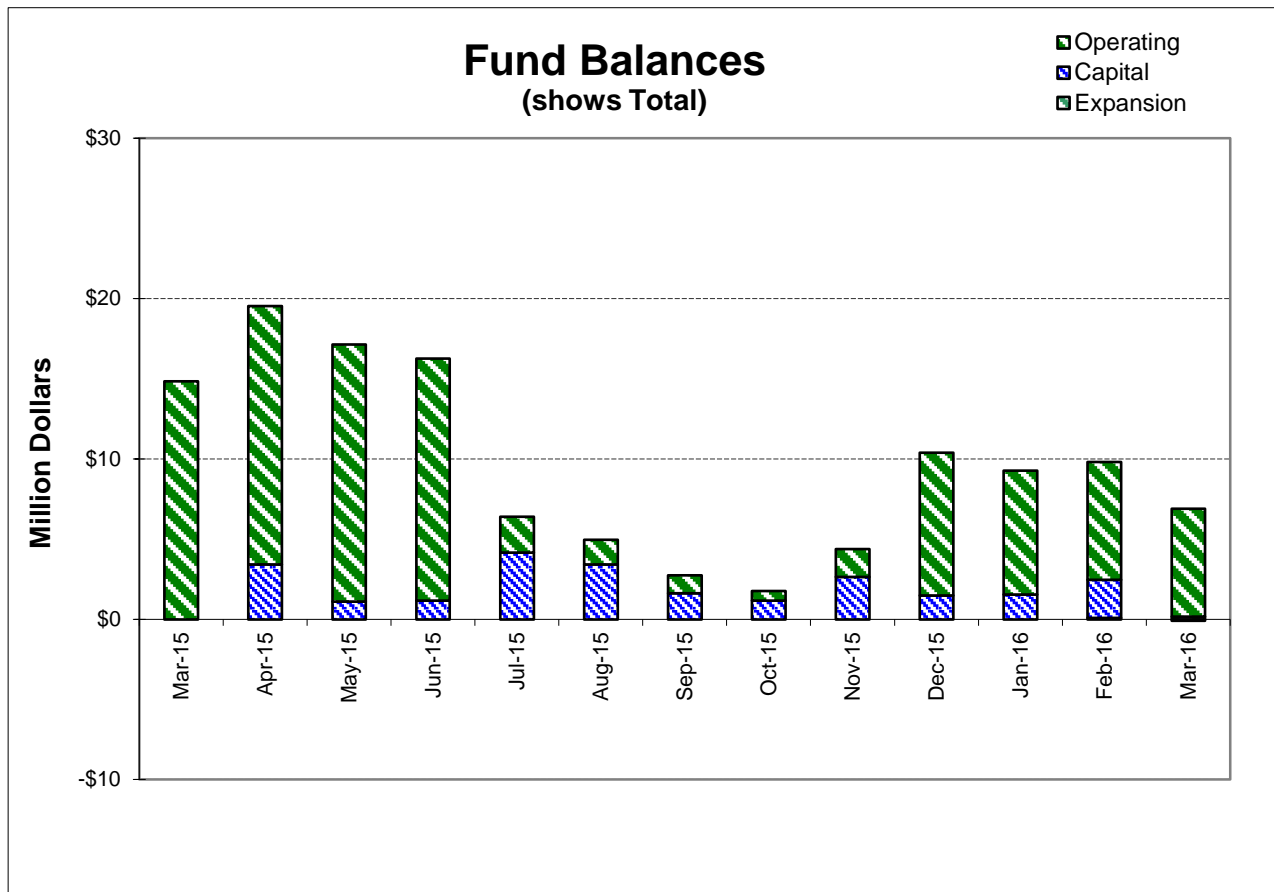
<i>Revenues</i>	FY 15/16 Budget	Collected to date	Encumbrances	Received to Date	Uncollected Revenue	Percent Collected
<u>Operating</u>						
Use of Money/Property	\$766,000	\$574,406		\$574,406	\$191,594	75.0%
Intergovernmental	\$0	\$7,481		7,481	(7,481)	N/A
Charges for Services	20,372,000	13,106,362		13,106,362	7,265,638	64.3%
Miscellaneous Revenues	143,000	64,358		64,358	78,642	45.0%
Donations/Contributions (Capital Labor)	-	496,106		496,106	(496,106) (5)	N/A
Total Operating:	\$21,281,000	\$14,248,712		\$14,248,712	\$7,032,288	67.0%
<u>Capital</u>						
Use of Money/Property	\$27,000	\$968		\$968	\$26,032	3.6%
Capacity Charges	2,998,000	2,830,919		2,830,919	167,081	94.4%
Intergovernmental	21,971,100	11,140,665		11,140,665	10,830,435	50.7%
Bond Proceeds	15,200,000	-		-	15,200,000	0.0%
Sale of Assets	-	134		134	(134)	N/A
Intrafund Transfers	12,248,000	10,898,000		10,898,000	1,350,000 (2)	89.0%
Total Capital:	\$52,444,100	\$24,870,687		\$24,870,687	\$27,573,413	47.4%
Grand Total Revenue:	\$73,725,100	\$39,119,399		\$39,119,399	\$34,605,701	53.1%

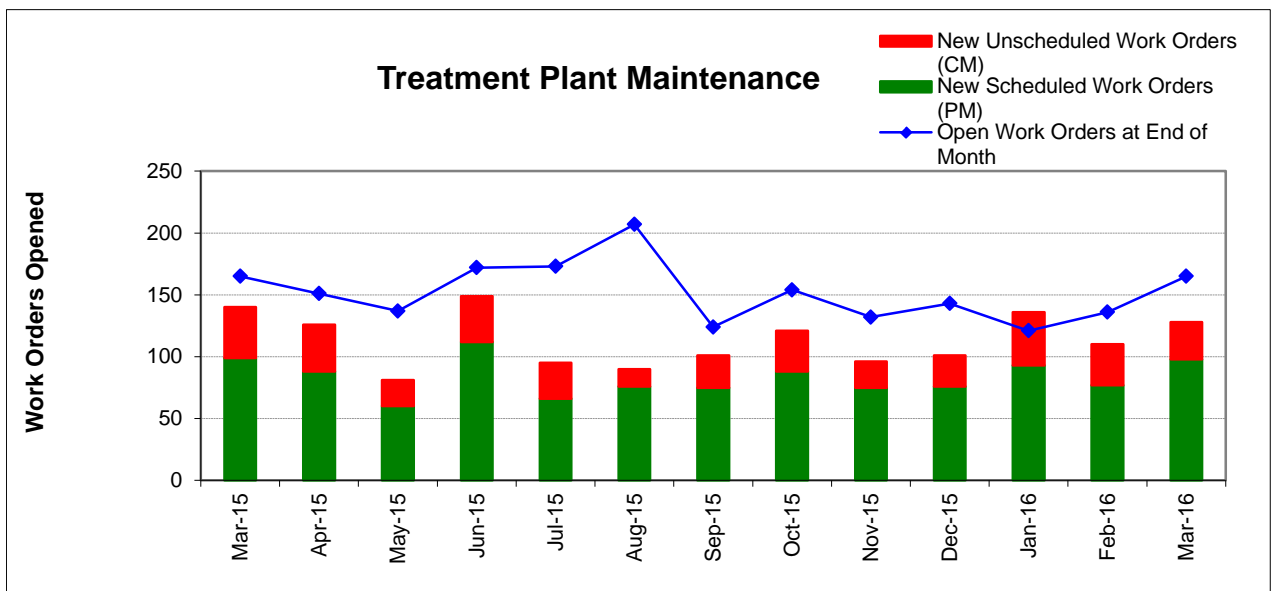
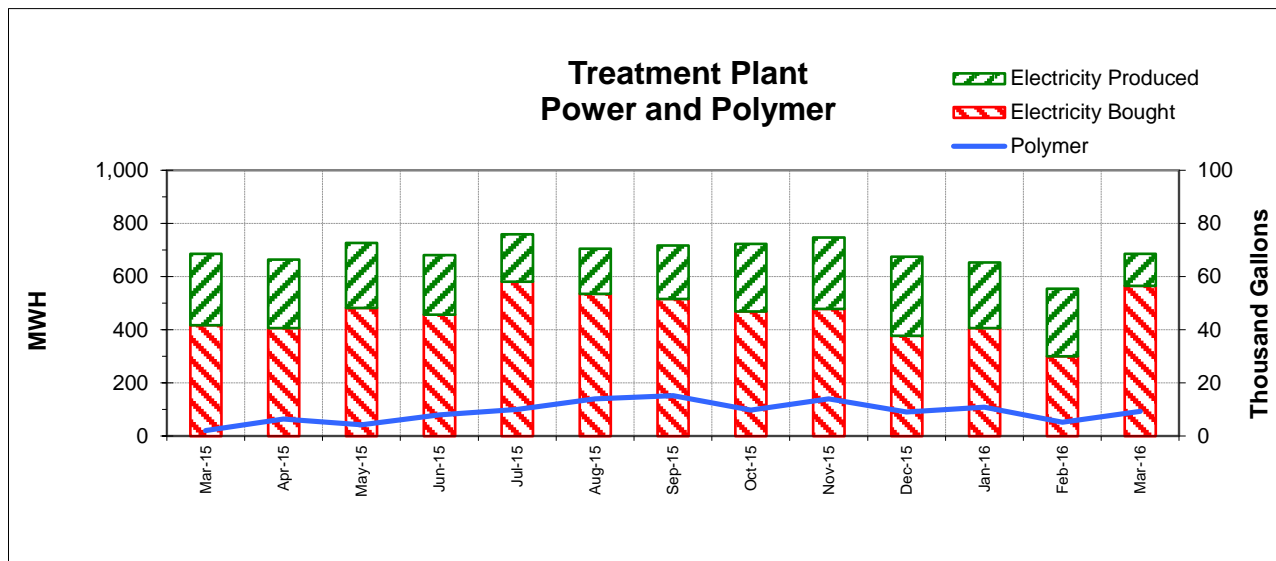
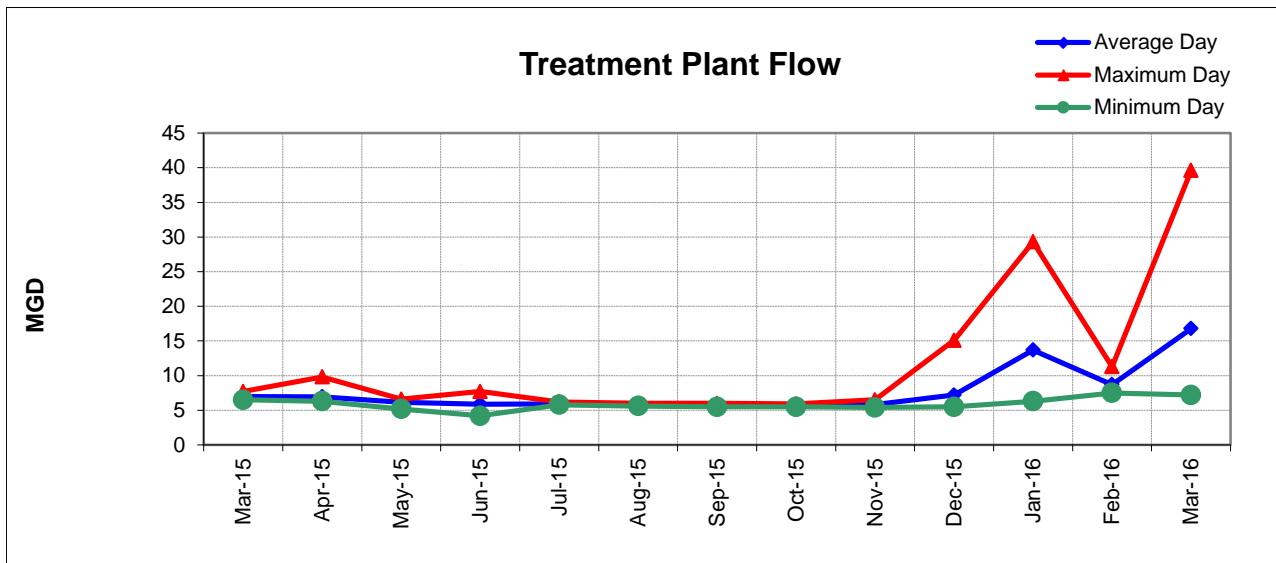
Cash on Hand as of 3/31/16 **\$6,797,455.64**

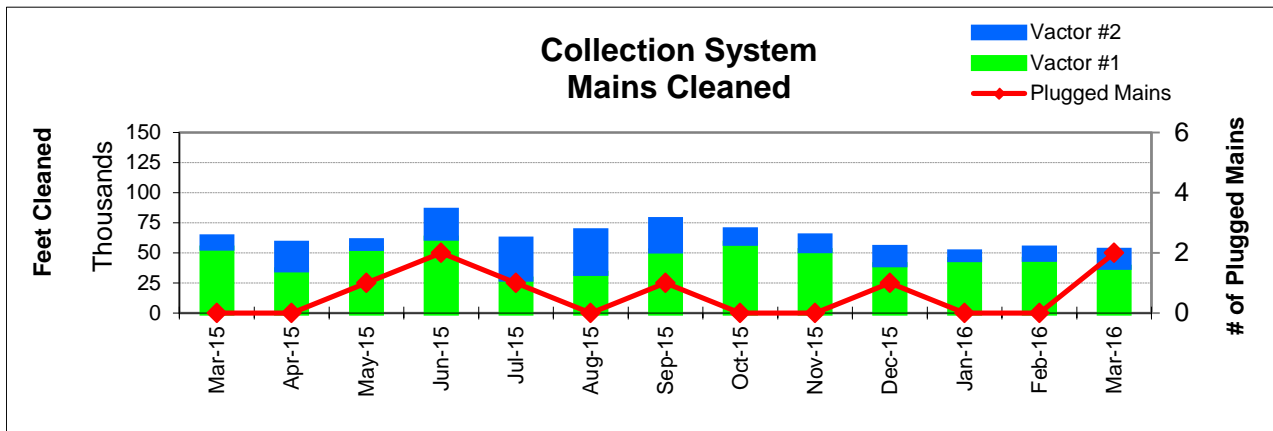
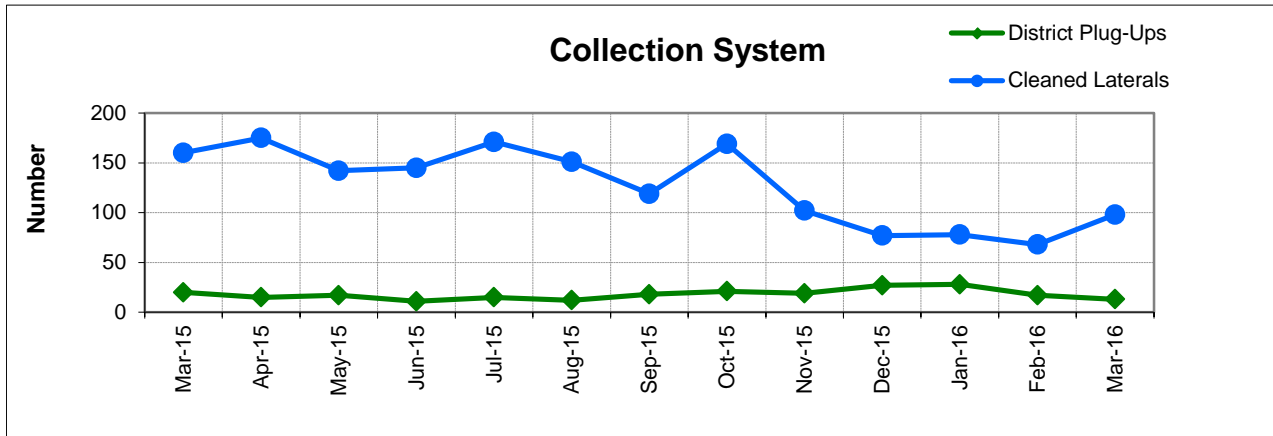
**excluding Debt Service restricted funds
3/31/16 -Effective Rate of Return = 0.68%

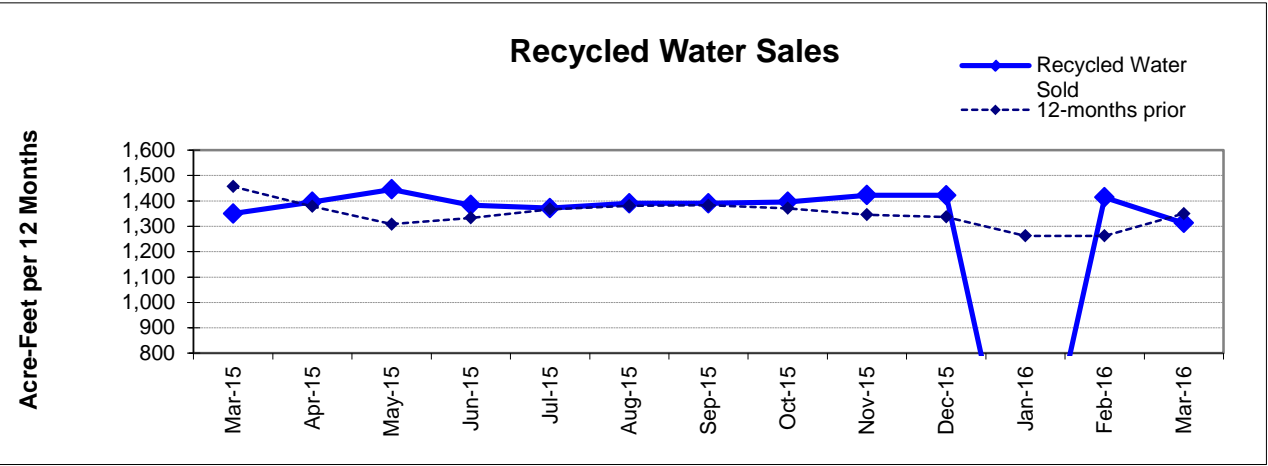
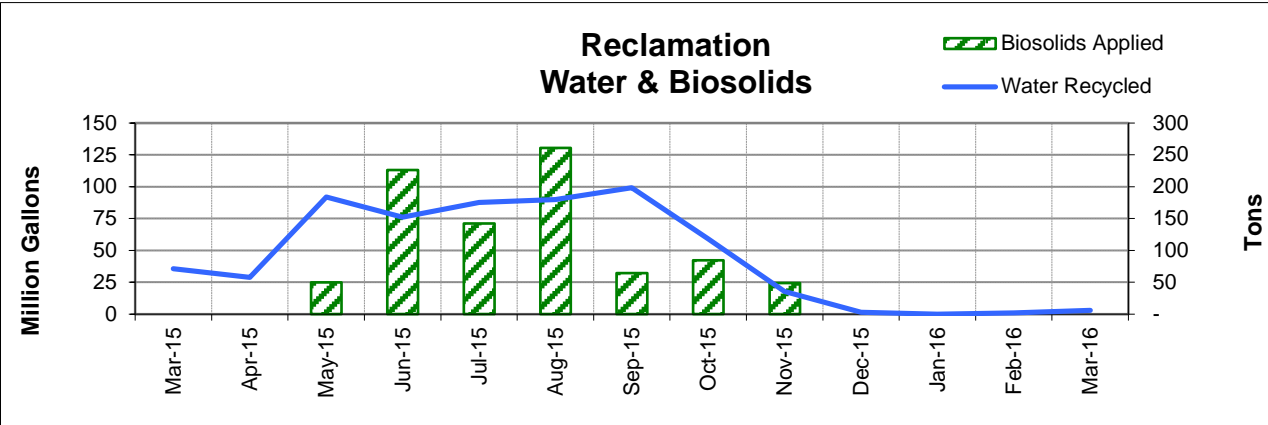
1. Series 2009B's and 2012A's principal/interest payments made in Jul & Jan
2. Processed intrafund transfer from Operating to Capital in July
3. Includes Debt Service and Intrafund Transfers; otherwise is 66.3%
4. See Capital Project Status report for details
5. In-house Labor for Capital Projects (Contra acct for Salaries)

This page intentionally left blank.









FUND BALANCES - MONTHLY

CATEGORY	Mar-15	Apr-15	May-15	Jun-15	Jul-15	Aug-15	Sep-15	Oct-15	Nov-15	Dec-15	Jan-16	Feb-16	Mar-16
<i>(Thousand Dollars)</i>													
7800	14,844	16,120	16,018	15,096	2,241	1,548	1,119	598	1,739	8,920	7,737	7,347	6,726
7850	-	-	-	-	-	-	-	-	-	-	-	-	-
Subtotal Operating	14,844	16,120	16,018	15,096	2,241	1,548	1,119	598	1,739	8,920	7,737	7,347	6,726
Capital Improvement Projects	-	3,421	1,112	1,167	4,170	3,423	1,624	1,163	2,653	1,484	1,541	2,389	(96)
Debt Proceeds	-	6	6	6	-	-	-	-	-	-	-	-	-
Subtotal Capital	-	3,427	1,118	1,173	4,170	3,423	1,624	1,163	2,653	1,484	1,541	2,389	(96)
Total Discretionary Funds	14,844	19,547	17,136	16,269	6,411	4,971	2,743	1,761	4,392	10,404	9,278	9,736	6,630
Expansion Fund (Restricted)	-	-	-	-	-	-	-	-	-	-	-	85	168
Total Restricted Funds	-	-	-	-	-	-	-	-	-	-	-	85	168
TOTAL ALL FUNDS	14,844	19,547	17,136	16,269	6,411	4,971	2,743	1,761	4,392	10,404	9,278	9,821	6,798

DEVELOPMENT WORKLOAD - MONTHLY

CATEGORY	Mar-15	Apr-15	May-15	Jun-15	Jul-15	Aug-15	Sep-15	Oct-15	Nov-15	Dec-15	Jan-16	Feb-16	Mar-16
<u>Phone Requests</u>													
Maps/Drawings	2	3	3	2	6	8	10	6	14	5	9	9	9
Lateral Permits	-	-	-	-	-	-	-	-	-	-	-	-	-
Policy Questions	2	5	3	9	1	8	7	10	4	3	8	12	9
Development Questions	45	58	53	45	41	68	59	93	65	56	89	77	66
Miscellaneous	11	14	4	15	3	11	9	6	5	6	1	6	8
TOTAL	60	80	63	71	51	95	85	115	88	70	107	104	92
<u>Counter Requests</u>													
Maps/Drawings	2	-	1	3	1	2	2	1	2	1	3	3	2
Lateral Permits	9	9	7	13	6	9	9	15	10	14	15	11	8
Policy Questions	1		1	3	-	3	1	-	-	2	-	-	1
Development Questions	5	4	2	6	2	10	7	11	10	9	8	17	12
Miscellaneous	-	2	-	2	-	-	-	3	-	1	1	-	-
TOTAL	17	15	11	27	9	24	19	30	22	27	27	31	23
<u>Initial Request (Referrals)</u>	8	21	13	21	13	16	14	20	15	9	15	14	16
<u>Connection Permits Issued</u>													
Residential Permits	25	8	2	6	4	14	7	2	2	8	5	3	4
Commercial Permits	2	-	3	1	1	-	2	4	2	3	-	1	2
Industrial Permits		-			-			-		1	-	-	-
TOTAL PERMITS	27	8	5	7	5	14	9	6	4	12	5	4	6
Residential Units	25	8	5	7	5	14	7	2	2	8	12	4	11
Commercial Units	2	-	3	1	2	-	2	4	183	3	-	1	2
TOTAL UNITS	27	8	8	8	7	14	9	6	185	11	12	5	13
<u>Annexations</u>													
Submitted	2	-	-	1	-	-	-	-	2	1	-	-	-
Acreage	15.51	-	-	1.00	-	-	-	-	1.60	0.12	-	-	-
<u>Plans Reviewed</u>													
<u>Subdivisions/Sites</u>													
First Submittal	1	6	3	5	3	3	7	4	5	1	3	4	3
Second Submittal	1	2	4	1	2	1	1	3	3	-	-	1	4
Third Submittal		2	-	-	1	2	2	1	2	2	1	2	1
<u>Building/Tenant Improvements</u>													
First Submittal	3	5	5	8	7	15	15	17	19	13	9	2	16
Second Submittal	1	1	3	1	5	1	11	9	4	8	8	1	7
Third Submittal	5	1	3	1	1	-	3	3	9	5	4	1	3
<u>Miscellaneous Plan Reviews</u>			-	-	10	-	-	-	-	-	-	-	-
TOTAL PLANS REVIEWED	11	17	18	16	29	22	39	37	42	29	25	11	34

INSPECTION WORKLOAD - MONTHLY

CATEGORY	Mar-15	Apr-15	May-15	Jun-15	Jul-15	Aug-15	Sep-15	Oct-15	Nov-15	Dec-15	Jan-16	Feb-16	Mar-16
<u>CONSTRUCTION</u>													
Locating Sewers	-	-	-	-	-	-	-	-	-	-	3	-	-
Permit Processing	-	-	-	-	-	-	-	-	-	-	-	-	-
Preconstruction Meetings	-	1	1	-	3	4	-	1	1	2	4	6	6
Inspections - Mains	1	2	-	-	-	-	-	-	-	-	-	6	3
Inspections - Manholes	5	-	-	3	-	10	-	2	13	-	10	91	49
Inspections - Laterals	17	14	8	13	23	20	21	8	9	14	10	15	16
Inspections - Cleanouts	40	36	22	44	32	30	30	12	51	43	17	48	41
Inspections - Review Video	1	-	3	-	5	1	-	1	2	1	4	2	1
Demo - Septic Tanks	-	-	-	-	-	-	-	-	-	-	-	-	-
Demo - Buildings	1	2	1	-	-	-	-	1	-	-	-	1	3
Update Record Drawings	-	-	-	-	-	-	-	-	-	-	-	-	-
TOTAL	65	55	35	60	63	65	51	25	76	60	48	169	119
<u>MISCELLANEOUS</u>													
Meter Readings	-	-	-	11	-	9	-	-	15	33	-	-	10
Washdown Facility Inspections	-	1	-	-	-	-	-	11	-	-	-	-	-
General Customer Assistance	23	-	-	-	11	5	19	20	4	3	7	36	37
City of Napa Water Discharge	-	-	-	-	-	-	-	-	-	-	-	-	-
TOTAL	23	1	-	11	11	14	19	31	19	36	7	36	47
<u>SPECIAL PROJECTS</u>													
	9	21	20	22	21	21	21	18	5	6	-	3	-

POLLUTION PREVENTION WORKLOAD - MONTHLY

CATEGORY	Mar-15	Apr-15	May-15	Jun-15	Jul-15	Aug-15	Sep-15	Oct-15	Nov-15	Dec-15	Jan-16	Feb-16	Mar-16
<u>Outreach Activities</u>													
Plant Tours Conducted	2	-	2	1	1			1	2	1	3	2	1
Presentations Made	0	-	0					0	0	0	0	1	1
Total Outreach Activities	2	-	2	1	1	-	-	1	2	1	3	3	2
<u>Inspections Conducted</u>													
Food Service Facilities	28	31	20	2	1	-	7	1	-	10	24	30	31
Auto Body & Car Wash	-	-	-	-	-	-	-	-	-	-	-	-	-
Other	-	-	-	-	-	-	-	-	-	-	-	-	1
Total Inspections	28	31	20	2	1	-	7	1	-	10	24	30	32
<u>Compliance Issues</u>													
NOVs Issued	6	-	2	4	2	1	2	1	3	1	2	-	1
NOEs Issued	1	-	1	-	-	-	-	1	1	1	-	-	-
Non-Compliant-FOG	-	-	-	-	-	-	-	-	-	-	-	1	-
Total Compliance Issues	7	-	3	4	2	1	2	2	4	2	2	1	1
<u>Pollution Prevention</u>													
Clothes Washer Rebates	62	-	56	48	-	-	12	-	8	27	12	10	-
Toilet Retrofit Rebates	19	10	17	39	15	9	35	17	19	21	1	6	22
Pharmaceuticals Diverted (in lbs)	293	240	190	286	326	293	213	305	199	166	556	341	341

RECYCLED WATER DELIVERIES - MONTHLY

	Acres	Mar-15	Apr-15	May-15	Jun-15	Jul-15	Aug-15	Sep-15	Oct-15	Nov-15	Dec-15	Jan-16	Feb-16	Mar-16
MONTHLY (MG)														
Water Sold														
Golf Courses	405.0	27.603	18.319	56.967	47.679	55.514	53.870	41.120	20.985	2.744	0.795	-	0.027	0.070
Cemeteries	5.0	0.182	0.526	0.546	0.728	0.786	0.740	0.854	0.448	0.082	-	-	0.145	0.000
Parks	18.5	0.124	0.344	0.647	0.842	1.191	1.132	0.858	0.415	0.086	-	-	-	-
Schools	21.0	0.972	1.044	1.455	2.035	2.020	2.042	1.827	1.119	0.382	0.088	-	0.040	0.075
Commerical	167.6	5.931	8.038	9.008	11.160	15.188	14.433	13.091	10.945	4.335	0.609	-	0.346	2.430
Vineyards	564.0	0.751	0.432	0.418	2.066	0.730	0.325	0.441	0.396	10.205	0.045	-	0.446	0.365
Trucked Water	175.0	0.184	0.065	0.131	0.200	0.306	0.269	0.333	0.473	0.039	0.020	-	0.010	0.018
Subtotal Sales	1,356.1	35.747	28.768	69.172	64.710	75.734	72.811	58.524	34.780	17.872	1.556	-	1.012	2.958
District Use														
Jameson	330.0	-	-	-	-	-	3.103	16.280	14.046	-	-	-	-	0.084
Somky	213.0	-	-	22.807	11.474	11.844	14.068	24.405	10.220	-	-	-	-	-
Fagundes/Airport	50.5	-	-	-	-	-	-	-	-	-	-	-	-	-
Subtotal District	593.5	-	-	22.807	11.474	11.844	17.171	40.685	24.266	-	-	-	-	0.084
TOTAL DELIVERED	1,949.6	35.747	28.768	91.979	76.184	87.578	89.981	99.209	59.046	17.872	1.556	-	1.012	3.042
ANNUAL (AF)														
Water Sold														
Golf Courses	405.0	950	981	1,038	984	977	1,002	998	1,001	997	1,000		999	915
Cemeteries	5.0	14	15	15	15	15	15	16	15	15	15		15	15
Parks	18.5	13	14	13	13	13	14	16	17	17	17		17	17
Schools	21.0	42	43	42	40	39	39	39	40	40	40		40	37
Commerical	167.6	298	308	303	293	289	286	287	293	295	294		286	275
Vineyards	564.0	16	18	18	24	24	24	25	21	51	49		50	49
Trucked Water	175.0	17	17	16	15	15	11	9	9	8	7		6	6
Subtotal Sales	1,356.1	1,350	1,396	1,445	1,384	1,372	1,390	1,391	1,396	1,423	1,422	-	1,414	1,313
District Use														
Jameson	330.0	187	187	167	154	121	101	122	103	103	103		103	103
Somky	213.0	254	253	274	258	270	270	305	291	291	291		291	291
Fagundes/Airport	50.5	-	-	-	-	-	-	-	-	-	-		-	-
Subtotal District	593.5	441	441	441	411	390	371	427	394	394	394	-	394	394
TOTAL DELIVERED	1,949.6	1,791	1,837	1,886	1,795	1,762	1,761	1,818	1,790	1,816	1,816	-	1,807	1,707

BIOSOLIDS HANDLING - MONTHLY

Site	Mar-15	Apr-15	May-15	Jun-15	Jul-15	Aug-15	Sep-15	Oct-15	Nov-15	Dec-15	Jan-16	Feb-16	Mar-16
<u>Land Applied by NSD</u>													
Somky	-												
Airport/Fagundes	-												
Jameson Canyon	-	-	50	226	142	261	64	84	49	-	-	-	-
Subtotal by NSD	-	-	50	226	142	261	64	84	49	-	-	-	-
<u>Land Applied by Contractor</u>													
Somky													
Airport/Fagundes													
Jameson Canyon													
Subtotal by Contractor	-	-	-	-	-	-	-	-	-	-	-	-	-
Total Land Applied	-	-	50	226	142	261	64	84	49	-	-	-	-
Off Site (Contractor)	-												
<hr/>													
Total (tons)	-	-	50	226	142	261	64	84	49	-	-	-	-

COLLECTION SYSTEM MAINTENANCE - MONTHLY

CATEGORY	Mar-15	Apr-15	May-15	Jun-15	Jul-15	Aug-15	Sep-15	Oct-15	Nov-15	Dec-15	Jan-16	Feb-16	Mar-16
<u>Plugups</u>													
Total Calls	61	44	48	30	47	47	63	57	53	69	78	58	43
Business Hours	41	24	32	14	33	29	37	35	29	40	40	42	22
After Hours	20	20	16	16	14	18	26	22	24	29	38	16	21
District's	20	15	17	11	15	12	18	21	19	27	28	17	13
Property Owner's	41	29	31	19	32	35	45	36	34	42	50	39	30
Plugged Main Lines	-		1	2	1		1			1			2
Run Lateral w/Eel	160	175	142	145	171	151	119	169	102	77	78	68	98
<u>Cleaning (feet of sewer)</u>													
Vactor #1	53,929	36,091	53,851	62,212	28,193	32,946	51,755	57,917	51,959	40,292	44,407	44,811	38,201
Vactor #2	9,314	21,993	6,291	23,155	33,397	35,318	26,032	11,147	12,224	14,325	6,329	9,199	14,073
Hydro													
Rodder												650	
Total (feet)	63,243	58,084	60,142	85,367	61,590	68,264	77,787	69,064	64,183	54,617	50,736	54,660	52,274
Cleaning Days	21	22	20	27	20	22	24	25	22	23	18	21	17
Vactor #1	17	14	17	19	10	10	14	19	16	18	16	13	14
Vactor #2	4	8	3	8	10	12	10	6	6	5	2	7	3
Hydro													
Rodder												1	
Feet/day	3,000	2,650	3,000	3,150	3,100	3,100	3,250	2,750	2,900	2,350	2,800	2,600	3,050
Vactor #1	3,150	2,600	3,150	3,250	2,800	3,300	3,700	3,050	3,250	2,250	2,800	3,450	2,750
Vactor #2	2,350	2,750	2,100	2,900	3,350	2,950	2,600	1,850	2,050	2,850	3,150	1,300	4,700
Hydro													
Rodder												650	222
<u>Video Inspections</u>													
Mains (feet)	22,364	16,913	8,481	4,497	4,273	11,613	6,577	12,031	8,137	7,248	6,583	9,718	12,343
Laterals (each)	228	228	198	175	224	185	194	230	159	173	175	131	154
<u>Construction (each)</u>													
Cleanouts	15	20	9	12	14	12	10	7	10	23	22	20	13
Laterals	11	13	17	11	6	4	8		2	2	5	8	
Mains								1			1		
Manholes							1	1					
Other													
<u>USA Markings</u>													
Regular (w/in 2 days)	233	232	224	291	306	256	267	251	218	178	222	281	247
Emergency (w/in 2 hours)	10	10	6	17	9	11	13	13	8	16	21	8	13

WASTEWATER PLANT OPERATIONS DATA - MONTHLY

[illegible]

WASTEWATER PLANT MAINTENANCE and LABORATORY DATA - MONTHLY

CATEGORY	Mar-15	Apr-15	May-15	Jun-15	Jul-15	Aug-15	Sep-15	Oct-15	Nov-15	Dec-15	Jan-16	Feb-16	Mar-16
<u>Scheduled</u>													
Old	63	81	71	67	92	90	127	50	74	66	78	39	55
New	99	88	60	112	66	76	75	88	75	76	93	77	98
Completed	81	98	64	87	68	39	152	64	83	64	132	61	76
New Balance	81	71	67	92	90	127	50	74	66	78	39	55	77
<u>Unscheduled</u>													
Old	77	84	80	70	80	83	80	74	80	66	65	82	81
New	41	38	21	37	29	14	26	33	21	25	43	33	30
Completed	34	42	31	27	26	17	32	27	35	26	26	34	23
New Balance	84	80	70	80	83	80	74	80	66	65	82	81	88
<u>Total Work Orders</u>													
Old	140	165	151	137	172	173	207	124	154	132	143	121	136
New	140	126	81	149	95	90	101	121	96	101	136	110	128
Completed	115	138	94	114	94	56	193	93	118	90	158	95	99
New Balance	165	151	137	172	173	207	124	154	132	143	121	136	165
<u>LAB ANALYSES</u>													
<u>Sample Type</u>													
Regulatory	540	475	372	359	367	382	342	346	408	408	315	281	325
Process Control	1,344	1,346	826	760	871	881	843	791	1,310	1,258	1,288	1,157	1,276
Special Request	47	-	32	26	132	333	554	174	299	235	60	17	1
Quality Control/Assurance	297	500	5	8	37	12	5	7	302	302	372	500	306
TOTAL	2,228	2,321	1,235	1,153	1,407	1,608	1,744	1,318	2,319	2,203	2,035	1,955	1,908

**Summary of NSD Capital Project Status
through 3/31/16**

Proj #	Description	FY 15-16 Budget	FY 14-15 Carryovers	Adj.	Final FY 15-16 Budget	Encumbrance	Costs Paid to Date	Budget Remaining	% Budget Expended
<u>COLLECTION SYSTEM</u>									
13701	Main Line Sewer Rehab	84,900			84,900	-	22,750	62,150	27%
13702	Manhole Raising/Rehab	185,500			185,500	1,774	131,713	52,013	71%
13703	Lateral Replacement/Rehab	69,200			69,200	1,646	48,977	18,577	71%
13704	Cleanouts Installation/Rehab	76,400			76,400	3,650	58,997	13,753	77%
13705	I&I Reduction Program	130,000		17,000	147,000	141,169	1,884	3,947	1%
14701	Basin L - I&I Reduction Project 4	3,600,000	(1,423,400)		2,176,600	11,187	1,598,353	567,060	73%
14703	Browns Valley Rd & First St	1,339,000	23,450		1,362,450	95,817	219,713	1,046,920	16%
15701	Upper Lateral Rehabilitation - Basin L	175,000	45,300		220,300	18,045	101,400	100,855	46%
15703	Sarco Creek Pipeline Replacement - CalTRANS	82,400	19,450		101,850	0	102,368	(518)	101%
15704	Siphon Rehabilitation #1	5,000			5,000	-	-	5,000	-
15721	ACP CIPP Lining Project #1	1,000,000	47,300	(252,000)	795,300	-	292,504	502,796	37%
16701	Basin L - I&I Reduction Project 5	800,000			800,000	735,376	26,954	37,670	3%
16702	Collection System Master Plan Amendment	250,000		(136,000)	114,000	-	-	114,000	-
16703	Cleanout Replacement - Basin L (Pilot)	10,000			10,000	-	-	10,000	-
16704	Manhole Rehab - Basin L (Pilot)	10,000			10,000	-	-	10,000	-
16705	Siphon Rehab #2 - S. Terrace	5,000			5,000	-	-	5,000	-
16718	NN Siphon Vault Cover Replacement	-		75,000	75,000	45,000	50	29,950	0%
<u>COLLECTION SYSTEM - EQUIPMENT</u>									
15720	Vehicle - 173B - F350	-	57,500		57,500	-	55,119	2,381	96%
16706	Locatable Mini-Camera #1 Replacement	10,300			10,300	10,155	-	145	-
16720	Manhole Portable Flowmeter	-		15,000	15,000	-	12,387	2,613	83%
<u>LIFT STATIONS</u>									
16707	West Napa PS - Long Term Planning Study	75,000			75,000	-	-	75,000	-
<u>TREATMENT</u>									
13713	Pond Aeration	-	5,000		5,000	801	2,921	1,278	58%
13714	Phase I Recycled Water Expansion	-	353,000	115,000	468,000	4,983	458,143	4,874	98%
16708	Algae to Digester with Thermal Study	60,000			60,000	34,846	765	24,389	1%
16709	Carbon/Energy Efficiency Improvements	100,000			100,000	-	-	100,000	-
<u>TREATMENT - EQUIPMENT</u>									
13715	Spare Digester Mixer	-	187,150		187,150	986	64,720	121,445	35%

**Summary of NSD Capital Project Status
through 3/31/16**

Proj #	Description	FY 15-16 Budget	FY 14-15 Carryovers	Adj.	Final FY 15-16 Budget	Encumbrance	Costs Paid to Date	Budget Remaining	% Budget Expended
13741	Secondary PS Pump Rebuild (3)	-	35,000		35,000	-	27,794	7,206	79%
14707	Solids Handling Improvements	-	72,800		72,800	-	17,971	54,829	25%
14718	Maint - Stationary Gas Detector Replacement	50,000	123,450		173,450	-	127,602	45,848	74%
14720	Belt Press Polymer Skid Replacement	-	60,000	10,000	70,000	65,772	-	4,228	-
14723	Vehicle 162 - Ford F250 Diesel	-	30,000		30,000	-	-	30,000	-
15709	Effluent Overflow Meter	-	126,800		126,800	-	58,430	68,370	46%
15711	Rotork Actuator Replacement	-	52,750		52,750	6,200	-	46,550	-
15712	Rehabilitate Pond 1 Storage Structure	-	5,000		5,000	-	-	5,000	-
15713	Aeration Basin Instrumentation and Control	-	49,850	126,000	175,850	99,586	72,541	3,723	41%
16710	Sampler 3710FR Replacement	6,300			6,300	-	-	6,300	-
16711	Waterbath	5,200			5,200	5,343	-	(143)	-
16712	Primary Clarifier Mech/Struct Rehabilitation	40,000		3,000	43,000	-	41,000	2,000	95%
16713	Buried Metalic Piping (eval/rehab)	10,000			10,000	-	-	10,000	-
16714	High Voltage System Repairs	30,000			30,000	-	-	30,000	-
16715	Cogen Bottom End Overhaul	150,000			150,000	-	-	150,000	-
16719	Tractor Tracks (2)	-		20,000	20,000	-	15,638	4,362	78%
16721	Tractor Attachment	-		7,000	7,000	-	5,716	1,284	82%
<u>TREATMENT - STRUCTURES</u>									
13724	IPS Expansion	-	1,144,100		1,144,100	71,439	980,017	92,644	86%
<u>SCADA</u>									
13725	SCADA Server Replacement	-	35,050		35,050	-	32,440	2,610	93%
<u>RECYCLING - DISTRICT</u>									
15717	Isolation Valve on Kirkland Line (Devlin Rd)	-	14,650		14,650	-	-	14,650	-
16716	Line Recycled Water Reservoir	45,000			45,000	12,500	1,830	30,670	4%
<u>RECYCLING - EXPANSION</u>									
13727	North Bay Wate Reuse Project	524,550			524,550	-	495,858	28,692	95%
14726	MST RW Pipeline Construction	4,000,000	1,922,050		5,922,050	747,668	4,385,483	788,899	74%
14727	Split N/S Lines, surge protection	2,300,000	97,150		2,397,150	267,015	1,831,674	298,461	76%
15718	LCWD Recycled Water Pipeline - Construction	15,000,000	(94,850)		14,905,150	676,187	9,414,459	4,814,505	63%

OTHER

**Summary of NSD Capital Project Status
through 3/31/16**

Proj #	Description	FY 15-16 Budget	FY 14-15 Carryovers	Adj.	Final FY 15-16 Budget	Encumbrance	Costs Paid to Date	Budget Remaining	% Budget Expended
13729	Development Technical Support	220,700			220,700	-	173,217	47,483	78%
16717	Admin/Engineering Bldg - Acoustic Improvements	10,000			10,000	-	-	10,000	-
GRAND TOTAL ALL PROJECTS		\$30,459,450	\$2,988,550	-	\$33,448,000	\$3,057,143	\$20,881,387	\$9,509,469	62%