



Excerpts from 11/18 NBWRP TAC Webmeeting Project List Presentation



Process

💧 November TAC Webmeeting:

- Provide technical information to Agencies for internal discussions
- Provide summation of project costs

💧 December Board & TAC Meetings:

- Direction from Agencies regarding projects to be addressed at Feasibility level/Project Level Environmental
- Agency discussion of projects for Title XVI
- Discussion of process to resolve selection

💧 January Board & TAC Meetings

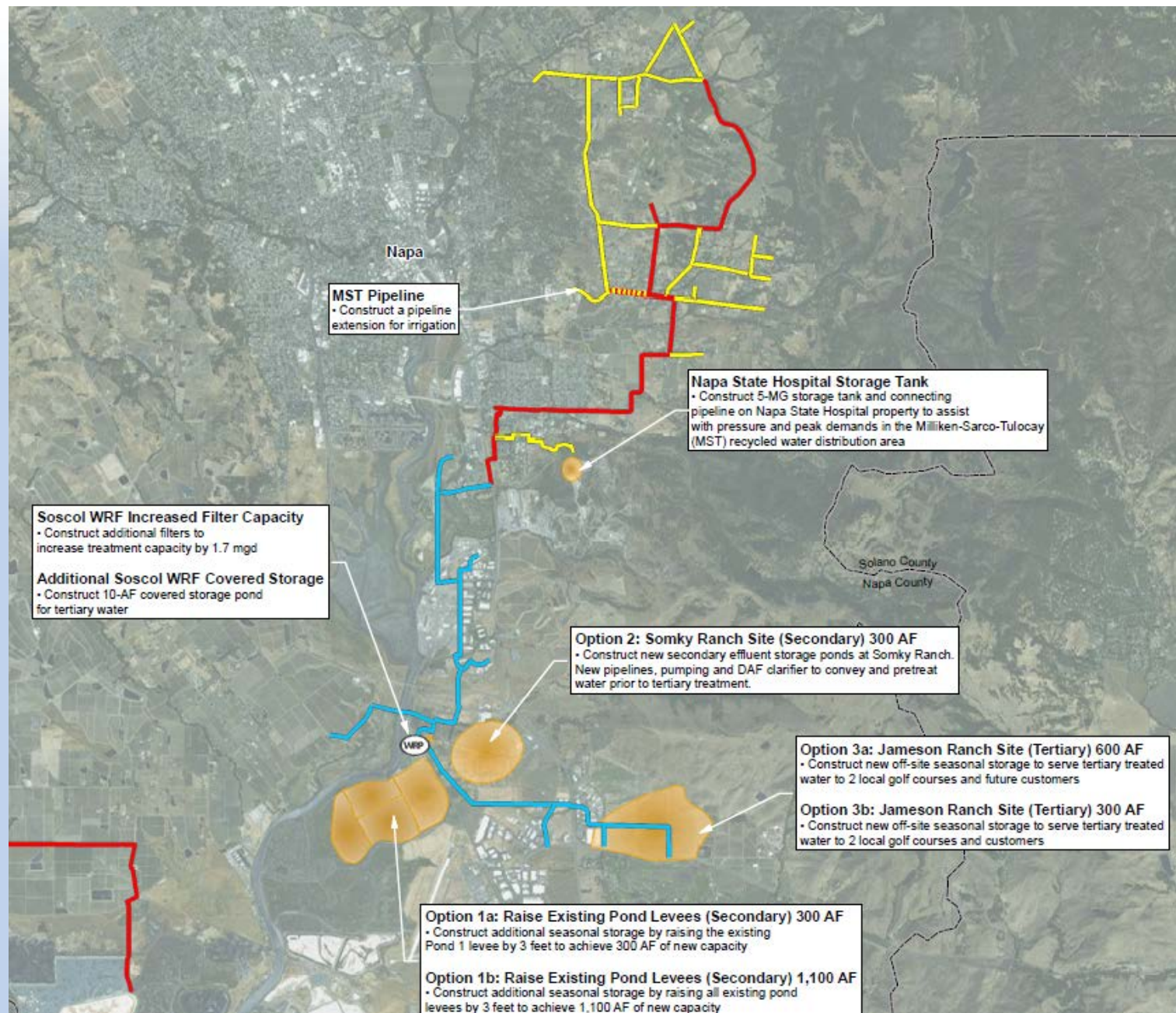
- Agency discussion and selection of Title XVI Program

Project Costs

- 💧 **Currently at feasibility level but subject to revision**
 - Agency review and comment
 - Consultant team review
- 💧 **Includes Reclamation factors**
 - USBR Allowance/Contingencies (35%) includes:
 - Allowance for Unlisted Items accounts for additional work that may be identified during additional design phases of the Project (15%),
 - Contingencies are considered as funds to be used after construction starts to pay contractors for overruns on quantities, changes site conditions, change orders, etc. (20%)
 - Non-Contract Cost (25%) includes:
 - Preliminary and final design engineering, preparation of construction plans and specifications (11%),
 - Construction services including construction management, construction inspection, engineering support during construction, construction surveying, start-up services, and as-built drawings (13%),
 - Project administration, legal support (1%)

Napa Sanitation District

Project Type	Project Title	Description	Feasibility Level Costs?
Treatment	Soscol WRF Increased Filter Capacity	Construct additional filters to increase treatment capacity by 1.7 mgd.	\$2.2 mil
Operational Storage	Additional Soscol WRF Covered Storage	Construct 10-AF covered storage pond for tertiary water	\$2.9 mil
	Napa State Hospital Storage Tank	Construct 5-MG storage tank and connecting pipeline on Napa State Hospital property to assist with pressure and peak demands in the Milliken-Sarco-Tulocay (MST) recycled water distribution area	\$7.4 mil
Seasonal Storage	Option 1a: Raise Existing Pond Levees (Secondary) 300 AF	Construct additional seasonal storage by raising the existing Pond 1 levee by 3 feet to achieve 300 AF of new capacity	\$9.9 mil
	Option 1b: Raise Existing Pond Levees (Secondary) 1,100 AF	Construct additional seasonal storage by raising all existing pond levees by 3 feet to achieve 1,100 AF of new capacity	\$30.2 mil
	Option 2: Somky Ranch Site (Secondary) 300 AF	Construct new secondary effluent storage ponds at Somky Ranch. New pipelines, pumping and DAF clarifier to convey and pretreat water prior to tertiary treatment.	\$20.5 mil
	Option 3a: Jameson Ranch Site (Tertiary) 600 AF	Construct new off-site seasonal storage to serve tertiary treated water to 2 local golf courses and future customers	\$17.3 mil
	Option 3b: Jameson Ranch Site (Tertiary) 300 AF	Construct new off-site seasonal storage to serve tertiary treated water to 2 local golf courses and customers	\$11.8 mil
Distribution	MST Pipeline	Construct a pipeline extension for irrigation.	\$13.8 mil





Summary of Costs



Agency	Project Type	Project Title	Total Project Capital Costs (\$mil)	Costs by Agency (\$mil)
Novato SD	Treatment	Novato SD WRP Capacity - 1 st Expansion (+0.85 MGD)	\$4.8	\$38.7
		Novato SD WRP Capacity - 2 nd Expansion (+0.85 MGD)	\$4.8	
	Seasonal Storage	Option 1: Site Near Highway 37 (Tertiary) 150 AF	\$5.6	
		Option 2: Site Near Highway 37 (Secondary) 150 AF	\$8.0	
		Option 3: Hamilton Site (Secondary) 150AF	\$14.2	
	Environmental Enhancement	Marin County Lower Novato Creek Project	\$0.9	
		Turnout to Transitional Wetlands	\$0.6	
SVCS D	Seasonal Storage	Option 1: Mulas Site (Tertiary) 49 AF	\$2.4	\$8.7
		Option 2: Robledo Site (Tertiary) 49 AF	\$2.6	
	Distribution	Napa Road Pipeline	\$3.6	
SCWA	Groundwater Management	Valley of the Moon Russian River Winter Flow ASR	\$3.4	\$7.0
		Sonoma Russian River Winter Flow ASR	\$3.6	
		Sonoma Valley Groundwater Management and Recharge Study		
Petaluma	Treatment	Increase ECWRF Capacity	\$9.0	\$58.8
	Seasonal Storage	Option 1a: Site Southeast of ECWRF (Secondary) 300 AF	\$14.3	
		Option 1b: Site Southeast of ECWRF (Secondary) 150 AF	\$7.3	
	Distribution	Urban Recycled Water Expansion	\$11.4	
		Agricultural Recycled Water Expansion Phase 1	\$4.2	
		Agricultural Recycled Water Expansion Phase 2	\$6.0	
		Agricultural Recycled Water Expansion Phase 3	\$6.5	
Napa SD	Treatment	Soscol WRF Increased Filter Capacity	\$2.2	\$110.8
	Operational Storage	Additional Soscol WRF Covered Storage	\$2.9	
		Napa State Hospital Storage Tank	\$7.4	
	Seasonal Storage	Option 1a: Raise Existing Pond Levees (Secondary) 300 AF	\$9.9	
		Option 1b: Raise Existing Pond Levees (Secondary) 1,100 AF	\$30.2	
		Option 2: Somky Ranch Site (Secondary) 300 AF	\$15.3	
		Option 3a: Jameson Ranch Site (Tertiary) 600 AF	\$17.3	
		Option 3b: Jameson Ranch Site (Tertiary) 300 AF	\$11.8	
	Distribution	MST Pipeline	\$13.8	
			\$224	



Agency Activities



Program Activities

- 💧 All project have been taken to feasibility level costs
- 💧 December 8th each agency choose:
 - Projects to receive “Project Level” environmental review to lead to a ROD
 - Projects to receive “Programmatic Level” environmental review
- 💧 December 14th Board Meeting
 - Results of Agency choices for project category
 - Discuss the funding implications
 - Discuss approaches to allocate Title XVI funds
- 💧 January 15th each agency choose:
 - Title XVI Projects with project level environmental review
 - Non-Title XVI Projects with project level environmental review
 - Projects to receive “Programmatic Level” environmental review
- 💧 January 26th Board Meeting to finalize Program

Agency	Project Type	Project Title	Total Project Capital Costs (\$mil)	Project Level EIR/EIS	Programmatic Level
Novato SD	Treatment	Novato SD WRP Capacity - 1 st Expansion (+0.85 MGD)	\$4.8		
		Novato SD WRP Capacity - 2 nd Expansion (+0.85 MGD)	\$4.8		
	Seasonal Storage	Option 1: Site Near Highway 37 (Tertiary) 150 AF	\$5.6		
		Option 2: Site Near Highway 37 (Secondary) 150 AF	\$8.0		
		Option 3: Hamilton Site (Secondary) 150AF	\$14.2		
	Environmental Enhancement	Marin County Lower Novato Creek Project	\$0.9		
		Turnout to Transitional Wetlands	\$0.6		
SVCSD	Seasonal Storage	Option 1: Mulas Site (Tertiary) 49 AF	\$2.4		
		Option 2: Robledo Site (Tertiary) 49 AF	\$2.6		
	Distribution	Napa Road Pipeline	\$3.6		
SCWA	Groundwater Management	Valley of the Moon Russian River Winter Flow ASR	\$3.4		
		Sonoma Russian River Winter Flow ASR	\$3.6		
		Sonoma Valley Groundwater Management and Recharge Study	TBD		
Petaluma	Treatment	Increase ECWRF Capacity	\$9.0		
	Seasonal Storage	Option 1a: Site Southeast of ECWRF (Secondary) 300 AF	\$14.3		
		Option 1b: Site Southeast of ECWRF (Secondary) 150 AF	\$7.3		
	Distribution	Urban Recycled Water Expansion	\$11.4		
		Agricultural Recycled Water Expansion Phase 1	\$4.2		
		Agricultural Recycled Water Expansion Phase 2	\$6.0		
		Agricultural Recycled Water Expansion Phase 3	\$6.5		
Napa SD	Treatment	Soscol WRF Increased Filter Capacity	\$2.2		
	Operational Storage	Additional Soscol WRF Covered Storage	\$2.9		
		Napa State Hospital Storage Tank	\$7.4		
	Seasonal Storage	Option 1a: Raise Existing Pond Levees (Secondary) 300 AF	\$9.9		
		Option 1b: Raise Existing Pond Levees (Secondary) 1,100 AF	\$30.2		
		Option 2: Somky Ranch Site (Secondary) 300 AF	\$15.3		
		Option 3a: Jameson Ranch Site (Tertiary) 600 AF	\$17.3		
		Option 3b: Jameson Ranch Site (Tertiary) 300 AF	\$11.8		
	Distribution	MST Pipeline	\$13.8		

Agencies have Indicated Some Choices Already

- 💧 Extended Storage Study provided important information:
 - Costs
 - Challenges
 - Benefits
- 💧 Some agencies have suggested their choices based on recent analysis
- 💧 The following table is not a final selection but potential selections suggested by the agencies
- 💧 The selection of storage projects will drive the Title XVI versus Non-Title XVI Projects

Estimated Rate Impacts

<u>Project</u>	<u>Cost</u>	<u>Rate Impact</u>
Soscol WRF increased filter capacity	\$2.2m	no rate impact
Additional Soscol WRF covered storage	\$2.9m	\$0.09 / kal
NSH storage tank	\$7.4m	\$0.24 / kgal
#1a – Raise pond levees (300 AF)	\$9.9m	\$0.23 / kgal
#1b – Raise pond levees (1,100 AF)	\$30.2m	\$0.58 / kgal
#2 – Somky Ranch storage (300 AF)	\$15.3m	\$0.40 / kgal
#3a– Jameson Ranch storage (600 AF)	\$17.3m	\$0.36 / kgal
#3b – Jameson Ranch storage (300 AF)	\$11.8m	\$0.29 / kgal
MST pipeline	\$13.8m	no rate impact

Assumptions

Assumes 50% grant or external funding

Projects amortized at 5%, for 30 years (increased filter capacity at 10 years)

Additional costs spread out over all users, net of additional associated revenue

MST pipeline – assumes construction paid by CFD