



Napa Sanitation District

General Manager's Report

for

December 2014

Contents:

- a. Transmittal Memo
- b. Budget Status and Cash Summary
- c. Key Information Graphs – Fund Balances, Treatment Plant and Collection
- d. Fund Balances
- e. Development Processing
- f. Construction Inspection
- g. Pollution Prevention
- h. Recycled Water Deliveries
- i. Biosolids Handling
- j. Collection System Maintenance
- k. Treatment Plant Operations
- l. Treatment Plant Maintenance & Laboratory
- m. Capital Project Expenditure Summary



NAPA SANITATION DISTRICT

General Manager's Report

Dedicated to Preserving the Napa River for Generations to Come

DATE: February 11, 2015
FROM: Timothy B. Healy, General Manager
SUBJECT: General Manager's Report for December, 2014

REGULATORY COMPLIANCE:

Collection System Compliance:	7 Category 1 SSO's, 0 Category 2 SSO's and 14 Category 3 SSO's
NPDES Permit (WWTP) Compliance:	Full compliance with all regulations
Air Quality Compliance:	Full compliance with all regulations
Recycled Water Compliance:	Full compliance with all regulations
Biosolids Compliance:	Full compliance with all regulations
Significant Comments:	None

FISCAL STATUS:

Period Covered:	July 1, 2014 – December 31, 2014
Percent Fiscal Year:	50.0%
Operating Expenditures to date:	59.6%
Historical Expenditures to date:	51.6%
Significant Comments:	The Operating Expenditures to date is higher than Historical Expenditures to date due to the new debt service that started in FY 2013-14. In addition, the remaining intrafund transfer budget from the Operating Fund to the Capital Fund, which is typically done on a quarterly basis, was done earlier for cash flow purposes.

Sewer service charges were received from the first installment payments of the property taxes in December. The second installment will be due in April 2015.

PERSONNEL:

Significant events for the month of December, 2014 in the Human Resources Department:

New Hires:	None
Separations:	Todd Herrick, Collection System Manager
Promotions:	Sean Warner promoted to Collection System Worker I; Dusty Maynard promoted to Operator II
Recruitment Activities:	Interviews held for Safety, Training & Fleet Maintenance Officer
Injuries:	None

Summaries of Operational Highlights are on following pages.

COLLECTIONS:

Significant events for the month of December 2014 in Collection System Maintenance include:

- The District had 7 Category 1 Sanitary Sewer Overflows (SSO's), 0 Category 2 SSO's and 14 Category 3 SSO's during the month. (A Category 1 is defined as an SSO that reached a drainage channel and/or surface water or; an SSO that reached a storm drain pipe that was not fully recovered and returned to the sanitary sewer system. A Category 2 is defined as an SSO that is equal to or greater than 1,000 gallons that did not reach surface water. A Category 3 is defined as an SSO that is less than 1,000 gallons that did not reach surface water. These are usually minor overflows of less than 10 gallons from cleanouts on District laterals that can be cleaned up by the crews.) During the month of December our region experienced a severe rain event that exceeded the collection system capacity. Out of the 7 category 1 SSO's that occurred during this event, 6 were due to over capacity and 1 was due to a plugged main. During this storm event the department bypassed a known problem area at Pine and Monroe Street. By conducting bypass operations for over 17 hours crews were successful in alleviating a 67,000 gallon SSO from occurring.
- The repair crew installed 12 cleanouts and our preventative maintenance crews ran work orders on 53 laterals and cleaned over 65,000 feet of main line. Additionally, our asset assessment team conducted CCTV inspections on approximately 16,000 feet of main line and laterals.

TREATMENT PLANT:

Significant events for the month of December 2014 in the Treatment Plant Department:

Plant Operations

- For December 2014, the plant's influent flow was 535.0 MG as compared to last year flow for December 2013 of 193.7 MG
- Total flow to the Napa River for December 2014 was 601.6 MG as compared to December 2013 flow of 301.8 MG.
- The production of recycle quality water did not occur December 2014.
- This December power consumption purchased from PG&E was 523 MWH in comparison to December 2013 purchase of 389 MWH.
- There was 10.35" rain fall for December 2014 as compared to 0.45" rain fall for December 2013.
- The new DAF clarifier for algae separation was operated successfully during December. Although some punch list items exist, the DAF delivered an expanded maximum capacity of 12.8 MGD.
- Pond 4 end of the month recorded level reading was 59.76" as compared to December 2013 of 29.69". Total remaining pond capacity for December 2014 was 34.1% as compared to December 2013 remaining capacity of 53.7%.

MAINTENANCE:

Significant events for the month of December, 2014

Cogeneration Performance

- Cogeneration unit ran 743 of 744 hours for the month – 99.87% uptime, averaging 323.74 Kw

Process Maintenance

- Cogeneration unit monthly emission test - in compliance with BAAQMD permit.
- Installed input resistor, VFD Ferric Pump # 1
- Recalibrated analog input, VFD Recycle Pump # 1
- Repositioned Primary # 2 scum arm
- Increased flow meter range at West Napa to 20 MGD

Projects

- Tested and calibrated protective relays at Recycle Station Switchgear
- Completed 12 KV inspection and cleaning:
 - Inspect power pole integrity, trueness and guy wire system
 - Perform sound test on poles to identify deterioration
 - Inspect cross arms for integrity, stability and trueness
 - Inspect insulators for cracks and arcing and wire connections
 - Inspect for proper grounding
 - Inspect jumpers, connections, cutouts, surge arrestors, fuses and holders (note Rating and type)
 - Inspect wire spans for sufficient tension
 - Clean insulators

Standby Power

- Plant generators operated under emergency use for 42 minutes
- Riverpark operated under emergency use for 2 hours and 42 minutes
- Stonecrest operated under emergency use for 6 hours and 43 minutes
- West Napa operational testing only

Influent Pumps

- Influent pumps had no down time for repairs.

Laboratory

- On December 3rd, 2014 monthly sampling was conducted for Influent (INF-001). The results reported conform to the established applicable QA/QC limits. All influent sample results received indicated no unusual results and were within local limits.
- On December 3rd, 2014 monthly sampling was conducted for River Discharge Effluent (EFF-001). All effluent sample results received indicated no unusual results and were within the NSD NPDES Permit Limits.
- On December 3rd, semiannual monitoring was conducted for the NPDES Permitted Groundwater location (GRD-001). All sample results received indicated no unusual results.
- Semiannual Biosolids monitoring was conducted between December 2nd, and December 3rd, 2014. All biosolids sample results received indicated no unusual results, except elevated concentrations of Phosphorus.

RECYCLING:

Significant events in the Recycling Department for December 2014 include:

- Recycled water delivery for the month of December 2014 (1.740 million gallons), as compared to December 2013 (4.593 million gallons) is lower due to decrease in commercial landscape and golf course demand. Delivered recycled water volume represents the sum of all use site flow meter consumption values.
- Staff continued the encapsulating of biosolids at the Jameson Reuse Site.
- Staff performed annual recycled water use site inspections of all thirty use sites as outlined in General Order 96-011 which governs NSD's recycled water program. All sites conformed to reuse site requirements.

POLLUTION PREVENTION:

Significant events in the Pollution Prevention Department for December 2014 include:

- In December 2014, the Napa Safe Medication Collection Program collected 232.8 pounds of unneeded medications. The total amount of unneeded medications collected since program inception in September 2010 is 12,094.2 pounds.
- Staff gave no tours of the Soscol Water Recycling Facility.
- The District issued 38 Toilet Rebates @ \$100 each, for a total of \$3,800.
- In December 2014, the District issued 25 Clothes Washer Rebates @ \$6.25 each, for a total of \$156.25 and 44 ESME Washer Rebate @ \$43.75 for a total of \$1,925, a total of \$2,081.25 for both.

ENGINEERING / CAPITAL PROJECTS / DEVELOPMENT

Significant events occurring in the Engineering Department for December 2014 include:

- The contractor continued construction of the Phase 1 Recycled Water Expansion Project.
- The contractor continued construction of the Influent Pump Station Expansion Project.
- The contractor continued construction on the Pond Aeration Project.
- The contractor continued construction of the MST Recycled Water Pump Station Project.
- The contractor continued construction of the MST Recycled Water Pipeline Project.
- The contractor continued construction of the Mainline Sewer Rehabilitation – Main Street Repair Project.
- The design consultant continued design of the Soscol Recycled Water Pump Station North-South Split Project.
- The contractor continued construction of the North Napa CIPP Lining Project.
- The contractor began work on the North Napa Force Main Abandonment Project, Phase I.
- The District issued Notice of Completion for the Basin “L” Pipeline Rehabilitation Project #3 – Sub-Basin 8A.
- Notice Inviting Bids was issued for the Basin “L” Pipeline Rehabilitation Project #4.
- Notice Inviting Bids was issued for the LCWD Recycled Water Pipeline Project.
- Staff reviewed 19 sets of development plans and deemed 7 sets of plans complete. The approved plans consisted of one commercial building and four tenant improvements and two residences.

Budget Status & Cash Summary - July 1, 2014 - December 31, 2014 (50.0% of the year)

<i>Expenditures</i>	FY 14/15 Budget	Expenditures to date	Encumbrances	Committed to date	Remaining Balance	Percent Committed
Operating						
Salaries & Benefits	\$8,656,840	\$3,777,963	\$2,094	\$3,780,057	\$4,876,783	43.7%
Services & Supplies	5,232,630	2,176,422	739,704	2,916,127	2,316,503	55.7%
Taxes	33,150	12,580	-	12,580	20,570	37.9%
Debt Service	4,751,800	3,648,551	950	3,649,501	1,102,299 (1)	76.8%
Intrafund Transfers	1,887,500	1,887,500	-	1,887,500	-	100.0%
Total Operating:	\$20,561,920	\$11,503,016	\$742,748	\$12,245,764	\$8,316,156 (2)	59.6%
Capital						
Bldgs/Improvements & Equip	\$41,855,944	\$17,792,718	\$17,020,619	\$34,813,337	\$7,042,607 (3)	83.2%
Intrafund Transfers	23,847,000	9,984,400	-	9,984,400	13,862,600	41.9%
Total Capital :	\$65,702,944	\$27,777,119	\$17,020,619	\$44,797,737	\$20,905,207	68.2%
Grand Total Expenditures:	\$86,264,864	\$39,280,135	\$17,763,367	\$57,043,502	\$29,221,362	66.1%

<i>Revenues</i>	FY 14/15 Budget	Collected to date	Encumbrances	Received to Date	Uncollected Revenue	Percent Collected
Operating						
Use of Money/Property	\$163,000	\$453,793		\$453,793	(\$290,793) (4)	278.4%
Charges for Services	19,547,700	11,274,039		11,274,039	8,273,661	57.7%
Miscellaneous Revenues	79,000	33,037		33,037	45,963	41.8%
Donations/Contributions (Capital Labor)	-	410,340		410,340	(410,340) (5)	N/A
Total Operating:	\$19,789,700	\$12,171,209		\$12,171,209	\$7,618,491	61.5%
Capital						
Use of Money/Property	\$66,100	\$17,659		\$17,659	\$48,441	26.7%
Capacity Charges	3,925,000	307,491		307,491	3,617,509	7.8%
Intergovernmental	21,809,000	2,109,118		2,109,118	19,699,882	9.7%
Miscellaneous Revenues	20,000	72,223		72,223	(52,223) (6)	361.1%
Intrafund Transfers	25,734,500	11,871,900		11,871,900	13,862,600	46.1%
Total Capital:	\$51,554,600	\$14,378,392		\$14,378,392	\$37,176,208	27.9%
Grand Total Revenue:	\$71,344,300	\$26,549,601		\$26,549,601	\$44,794,699	37.2%

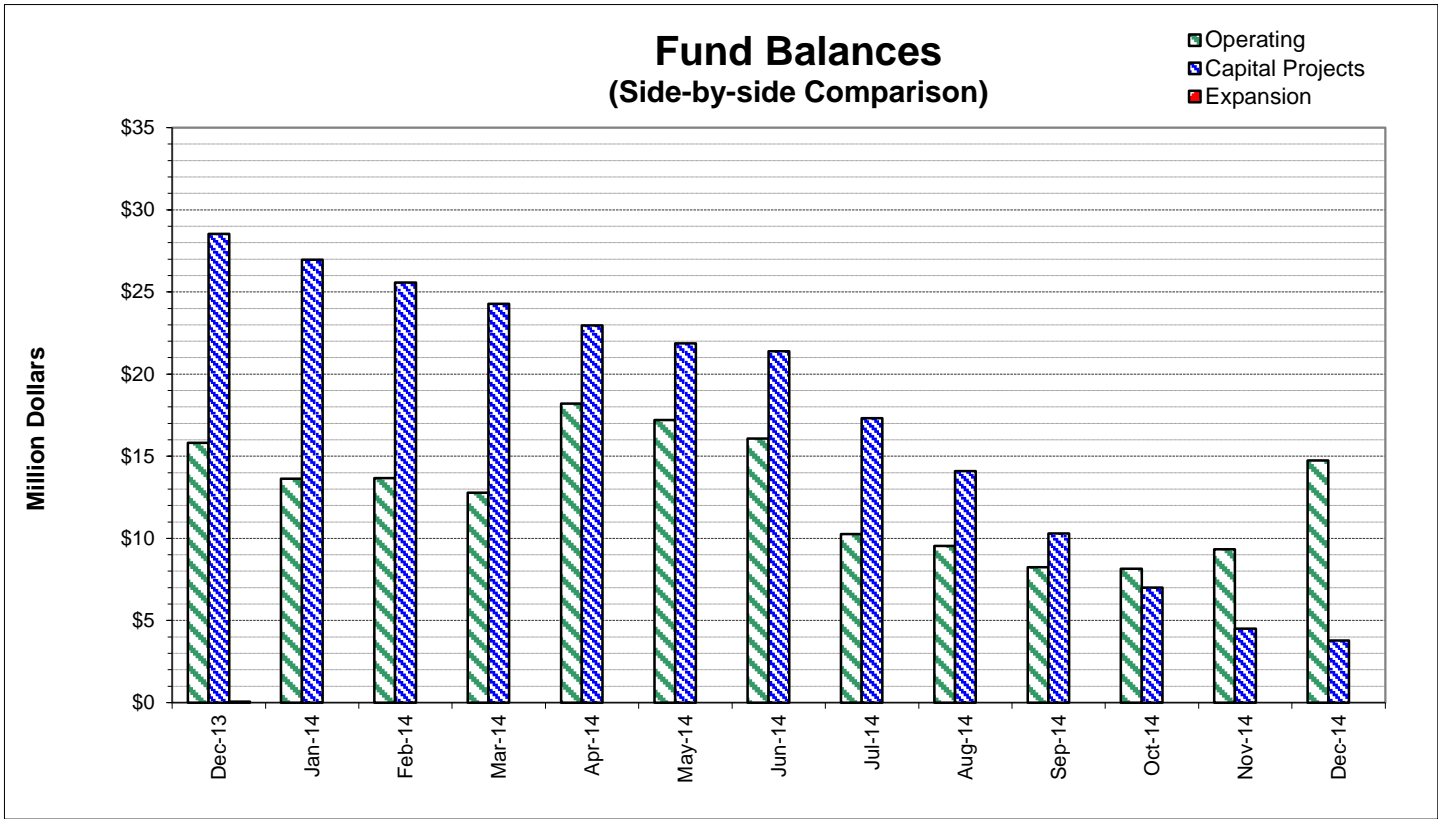
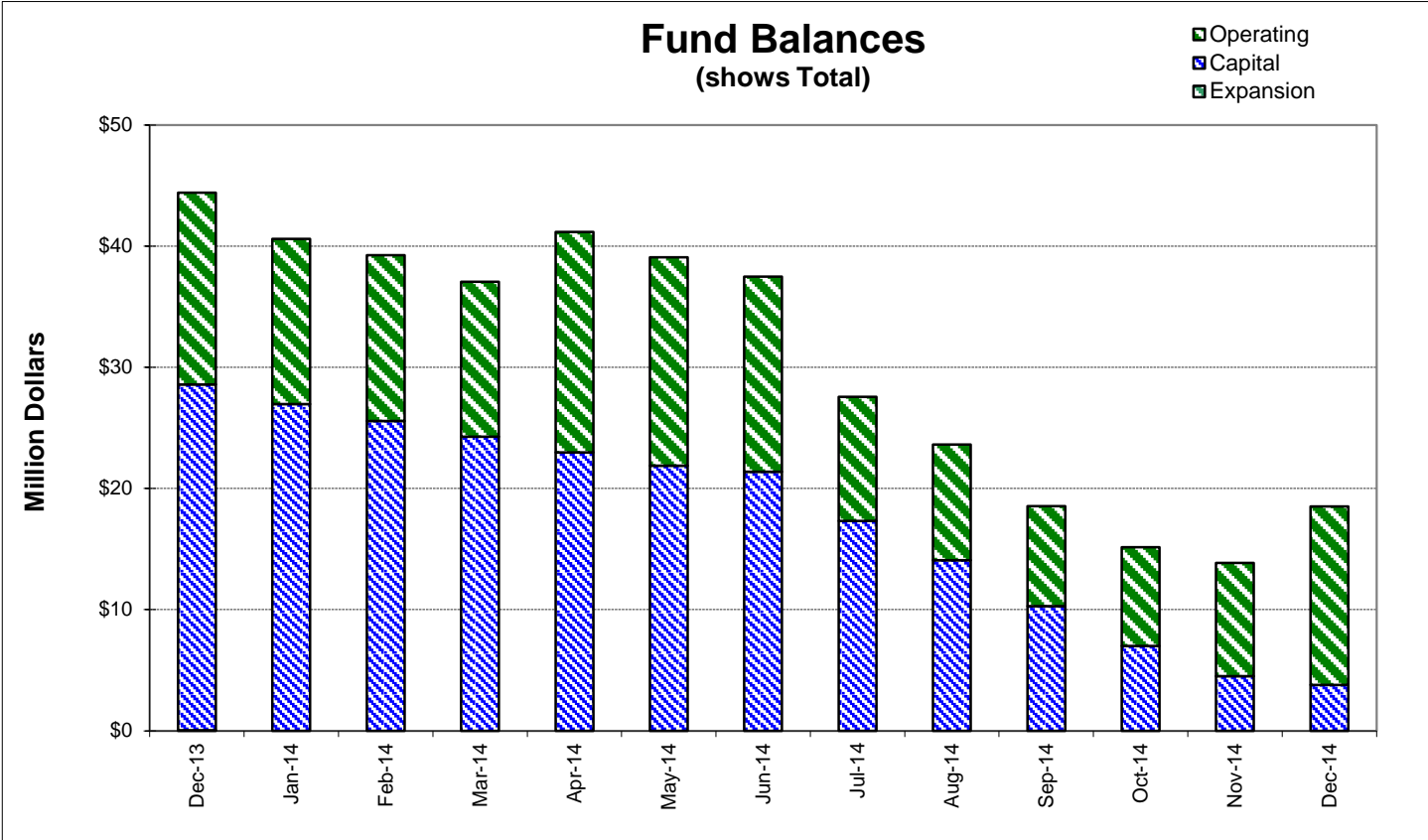
Cash on Hand as of 12/31/14 **\$18,525,116.39**

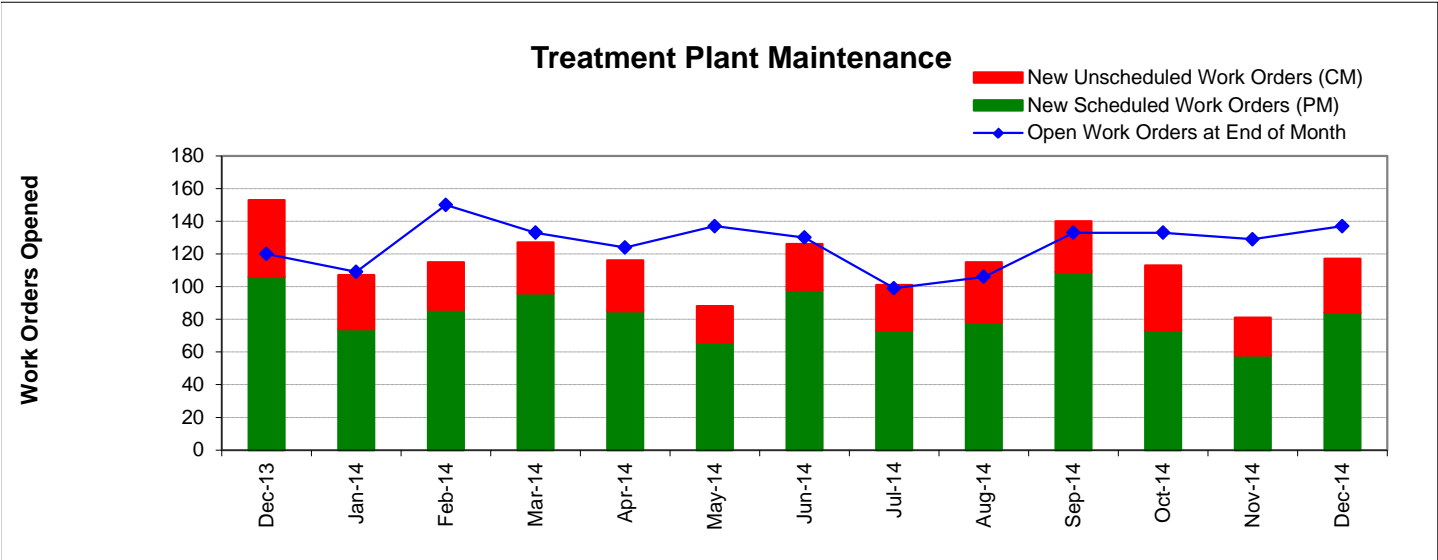
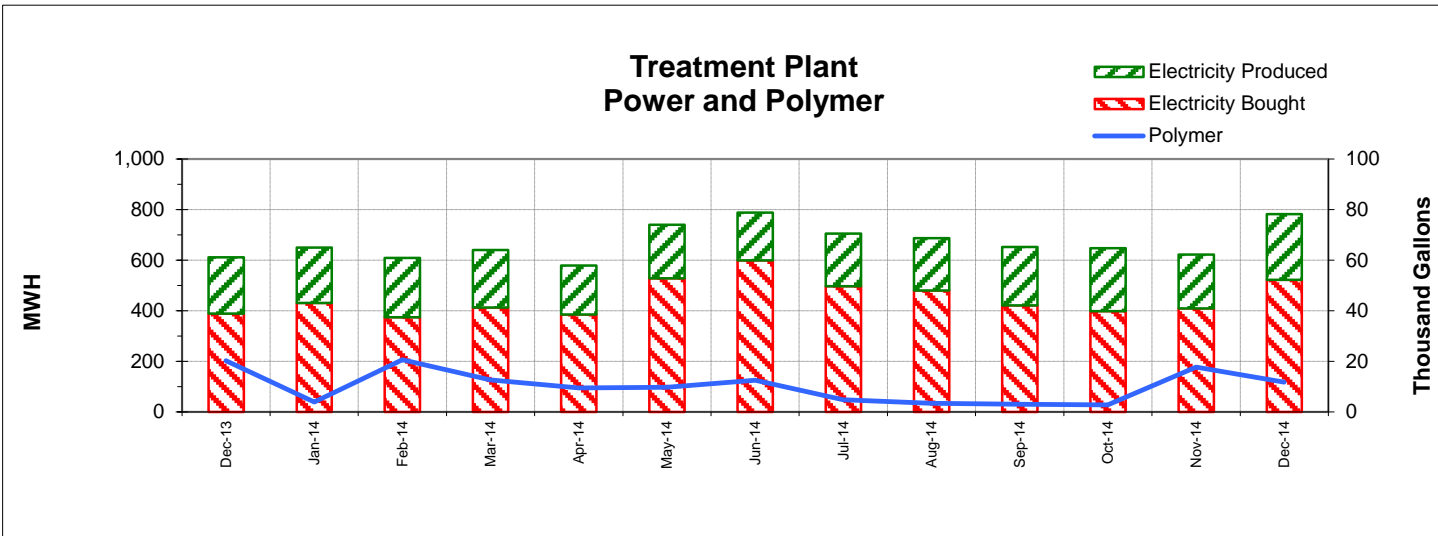
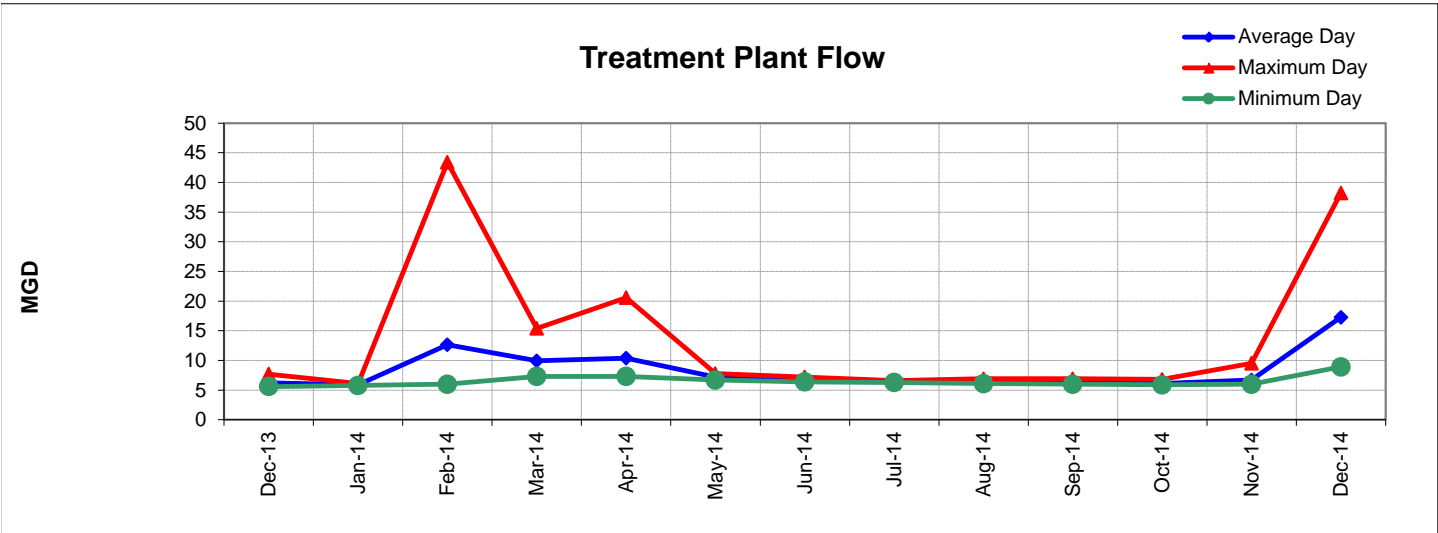
**excluding Debt Service restricted funds

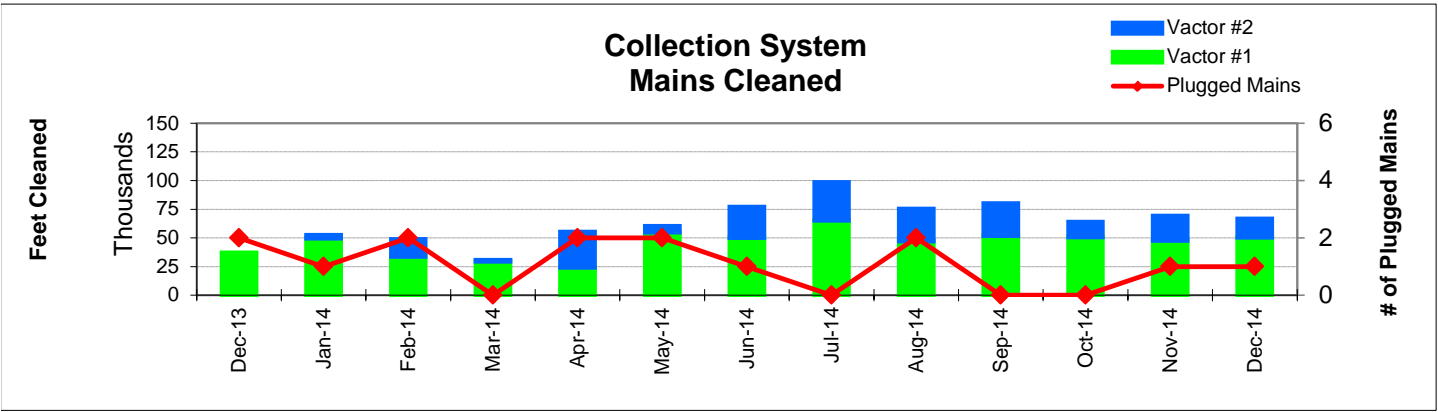
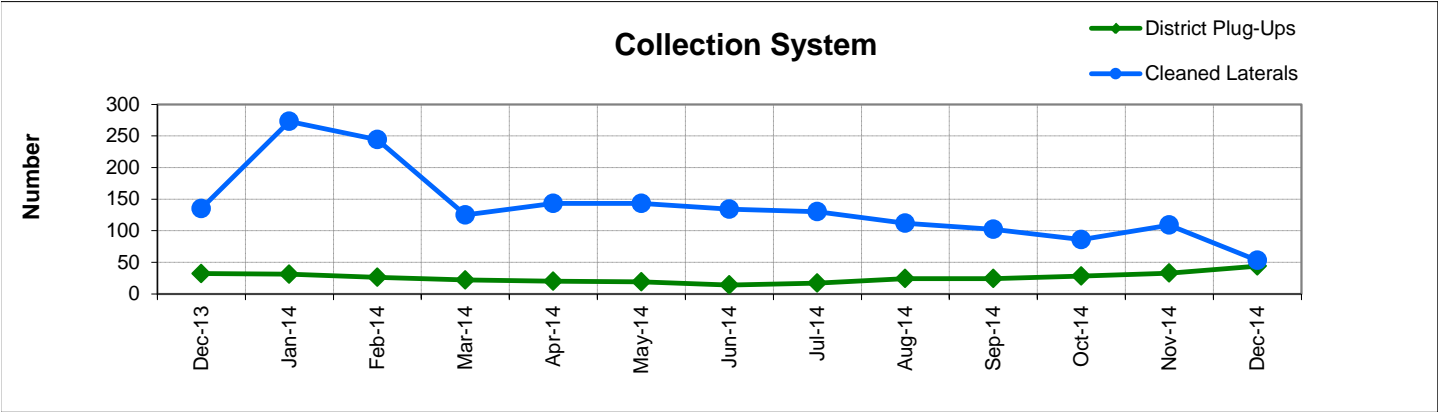
(11/30/14 -Effective Rate of Return = 0.61%)

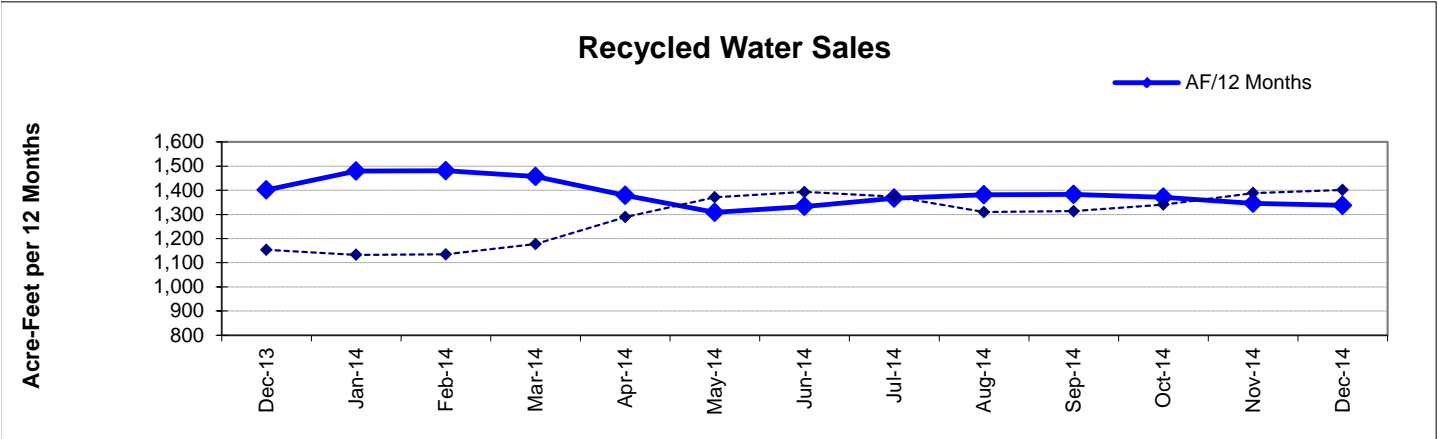
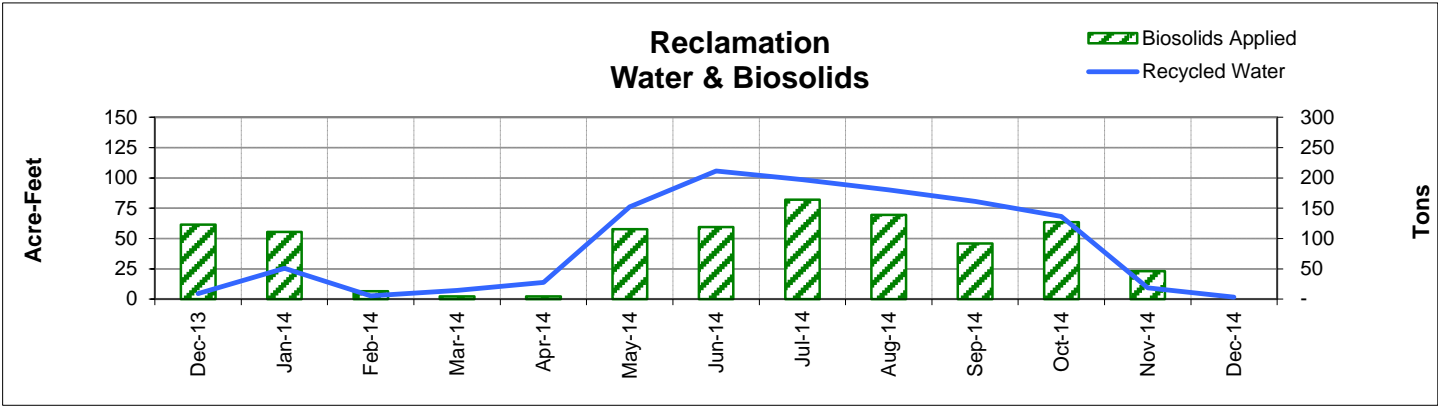
Rate for December not available as of 2/4/15

1. Series 2009B's and 2012A's principal payment made in July
2. Includes Debt Service and Intrafund Transfers; otherwise is 48.2%
3. See Capital Project Status report for details
4. Somky Property Lease was not included in the FY 14/15 Budget
5. In-house Labor for Capital Projects (Contra acct for Salaries)
6. Includes insurance settlement received for totaled vehicle









FUND BALANCES - MONTHLY

CATEGORY	Dec-13	Jan-14	Feb-14	Mar-14	Apr-14	May-14	Jun-14	Jul-14	Aug-14	Sep-14	Oct-14	Nov-14	Dec-14
<i>(Thousand Dollars)</i>													
7800	15,822	13,639	13,675	12,776	18,208	17,214	16,078	10,261	9,540	8,251	8,152	9,339	14,738
7850	-	-	-	-	-	-	-	-	-	-	-	-	-
Subtotal Operating	15,822	13,639	13,675	12,776	18,208	17,214	16,078	10,261	9,540	8,251	8,152	9,339	14,738
Capital Improvement Projects	8,472	6,827	5,432	7,898	6,592	5,492	11,688	7,605	4,379	5,792	2,494	-	3,781
Debt Proceeds	20,064	20,142	20,142	16,382	16,382	16,382	9,709	9,709	9,709	4,511	4,511	4,511	6
Subtotal Capital	28,536	26,969	25,574	24,280	22,974	21,874	21,397	17,314	14,088	10,303	7,005	4,511	3,787
Total Discretionary Funds	44,358	40,608	39,249	37,056	41,182	39,088	37,475	27,575	23,628	18,554	15,157	13,850	18,525
Expansion Fund (Restricted)	58	-	-	-	-	-	-	-	-	-	-	-	-
Total Restricted Funds	58	-	-	-	-	-	-	-	-	-	-	-	-
TOTAL ALL FUNDS	44,416	40,608	39,249	37,056	41,182	39,088	37,475	27,575	23,628	18,554	15,157	13,850	18,525

DEVELOPMENT WORKLOAD - MONTHLY

CATEGORY	Dec-13	Jan-14	Feb-14	Mar-14	Apr-14	May-14	Jun-14	Jul-14	Aug-14	Sep-14	Oct-14	Nov-14	Dec-14
<u>Phone Requests</u>													
Maps/Drawings	2	9	4	7	8	2	6	3	9	6	5	6	2
Lateral Permits	-	-	-	-	-	1	1	-	-	-	1	4	-
Policy Questions	2	15	12	11	10	7	5	4	7	6	-	2	8
Development Questions	18	25	39	37	40	58	45	31	32	30	31	28	52
Miscellaneous	8	8	3	7	9	8	10	2	2	4	9	7	6
TOTAL	30	57	58	62	67	76	67	40	50	46	46	47	68
<u>Counter Requests</u>													
Maps/Drawings	2	3	-	1	5	2	-	1	1	2	2	1	4
Lateral Permits	5	14	9	5	7	6	-	7	9	3	6	12	6
Policy Questions	1	4	-	4	1	2	-	-	-	-	-	-	1
Development Questions	4	8	5	11	3	10	8	2	2	1	6	5	6
Miscellaneous	1	1	1	3	2	2	-	1	-	-	-	3	-
TOTAL	13	30	15	24	18	22	8	11	12	6	14	21	17
Initial Request (Referrals)	11	8	6	13	16	15	13	11	11	4	17	9	9
<u>Connection Permits Issued</u>													
Residential Permits	4	14	5	-	1	1	1	-	2	7	-	2	1
Commercial Permits	1	5	-	5	1	2	3	2	-	2	2	-	2
Industrial Permits	-	-	-	-	-	-	-	-	-	-	-	-	-
TOTAL PERMITS	5	19	5	5	2	3	4	2	2	9	2	2	3
Residential Units	4	11	9	-	1	1	1	-	2	7	-	2	1
Commercial Units	1	3	-	5	1	2	3	2	-	2	2	-	3
TOTAL UNITS	5	14	9	5	2	3	4	2	2	9	2	2	4
<u>Annexations</u>													
Submitted	-	-	-	1	-	3	1	2	-	-	1	-	-
Acreage	-	-	-	7.20	-	34.04	0.40	5.15	-	-	32.70	-	-
<u>Plans Reviewed</u>													
<u>Subdivisions/Sites</u>													
First Submittal	3	1	1	1	1	4	-	-	-	1	2	1	2
Second Submittal	-	-	-	1	1	1	1	-	2	-	1	-	2
Third Submittal	-	-	-	1	-	2	2	-	-	-	-	-	2
<u>Building/Tenant Improvements</u>													
First Submittal	1	10	10	13	9	12	14	13	2	5	8	5	7
Second Submittal	-	2	-	3	4	2	5	1	4	1	1	1	4
Third Submittal	-	-	-	1	3	4	3	-	1	2	3	1	2
<u>Miscellaneous Plan Reviews</u>													
	-	2	-	2	-	-	-	-	-	-	-	-	-
TOTAL PLANS REVIEWED	4	15	11	22	18	25	25	14	9	9	15	8	19

INSPECTION WORKLOAD - MONTHLY

CATEGORY	Dec-13	Jan-14	Feb-14	Mar-14	Apr-14	May-14	Jun-14	Jul-14	Aug-14	Sep-14	Oct-14	Nov-14	Dec-14
<u>CONSTRUCTION</u>													
Locating Sewers	2	-	-	4	-	-	1	-	-	-	-	-	-
Permit Processing	-	-	-	-	-	-	-	-	-	-	-	-	-
Preconstruction Meetings	-	-	-	1	3	4	-	-	-	-	-	-	-
Inspections - Mains	-	3	-	8	-	1	-	2	-	-	-	1	-
Inspections - Manholes	124	3	2	-	11	5	1	1	15	16	33	3	18
Inspections - Laterals	7	9	4	19	12	22	1	4	11	6	7	4	6
Inspections - Cleanouts	65	14	-	-	13	24	1	10	3	11	6	10	1
Inspections - Review Video	-	-	1	-	4	-	-	-	-	2	4	6	-
Demo - Septic Tanks	-	-	-	-	-	-	-	-	-	-	-	-	-
Demo - Buildings	-	-	-	-	-	-	-	-	-	-	-	-	-
Update Record Drawings	-	-	-	-	-	-	-	-	-	-	1	-	-
TOTAL	198	29	7	32	43	56	4	17	29	35	51	24	25
<u>MISCELLANEOUS</u>													
Meter Readings	19	53	-	-	-	-	2	-	-	-	-	-	21
Washdown Facility Inspections	-	-	-	-	1	-	-	-	-	-	5	1	-
General Customer Assistance	-	-	8	11	23	30	17	23	7	31	22	-	-
City of Napa Water Discharge	-	19	-	-	-	-	-	-	-	-	-	-	-
TOTAL	19	72	8	11	24	30	19	23	7	31	27	1	21
<u>SPECIAL PROJECTS</u>	15	16	20	20	8	4	22	38	37	22	38	26	20

POLLUTION PREVENTION WORKLOAD - MONTHLY

CATEGORY	Dec-13	Jan-14	Feb-14	Mar-14	Apr-14	May-14	Jun-14	Jul-14	Aug-14	Sep-14	Oct-14	Nov-14	Dec-14
<u>Outreach Activities</u>													
Plant Tours Conducted	1	5	6	1	4	-	1	-	-	1	5	2	-
Presentations Made	-	1	-	3	2	-	-	-	-	-	-	-	-
Total Outreach Activities	1	6	6	4	6	-	1	-	-	1	5	2	-
<u>Inspections Conducted</u>													
Food Service Facilities	11	-	34	38	42	22	6	1	4	7	1	10	5
Auto Body & Car Wash	-	-	-	-	-	-	-	-	-	-	-	-	-
Other	-	-	-	-	-	-	-	-	-	-	-	-	-
Total Inspections	11	-	34	38	42	22	6	1	4	7	1	10	5
<u>Compliance Issues</u>													
NOVs Issued	-	-	-	-	-	-	-	1	-	1	1	1	1
NOEs Issued	1	5	2	-	-	-	-	-	-	1	-	1	1
Non-Compliant-FOG	-	-	-	-	-	-	-	-	-	-	-	-	-
Total Compliance Issues	1	5	2	-	-	-	-	1	-	2	1	2	2
<u>Pollution Prevention</u>													
Clothes Washer Rebates	40	34	37	53	-	30	101	-	-	-	32	-	69
Toilet Retrofit Rebates	6	3	2	7	15	17	16	10	15	22	13	3	38
Pharmaceuticals Diverted (in lbs)	189	269	256	188	264	216	166	240	323	330	231	194	233

RECYCLED WATER DELIVERIES - MONTHLY

	Acres	Dec-13	Jan-14	Feb-14	Mar-14	Apr-14	May-14	Jun-14	Jul-14	Aug-14	Sep-14	Oct-14	Nov-14	Dec-14
MONTHLY (MG)														
Water Sold														
Golf Courses	405.0	2.609	22.164	1.132	4.416	8.220	38.550	65.319	57.881	45.559	42.302	20.041	4.032	0.026
Cemeteries	5.0	-	0.062	0.167	0.109	0.234	0.556	0.729	0.845	0.695	0.695	0.587	0.187	-
Parks	18.5	-	0.181	0.044	0.001	-	0.825	0.928	1.072	0.945	0.167	0.056	-	-
Schools	21.0	0.014	0.316	0.060	0.135	0.556	1.920	2.558	2.323	2.255	1.519	1.018	0.268	0.056
Commerical	167.6	1.917	2.421	1.125	2.449	4.707	10.640	14.500	16.478	15.307	12.600	9.097	3.788	0.813
Vineyards	564.0	0.011	0.214	-	0.091	0.019	0.264	0.278	0.514	0.352	0.208	1.682	0.546	0.549
Trucked Water	175.0	0.043	0.117	0.024	0.036	0.066	0.399	0.485	0.545	1.541	0.999	0.507	0.350	0.297
Subtotal Sales	1,356.1	4.593	25.475	2.552	7.236	13.800	53.154	84.796	79.657	66.653	58.489	32.989	9.171	1.740
District Use														
Jameson	330.0	-	-	-	-	-	6.644	4.335	10.720	9.628	9.215	20.464	-	-
Somky	213.0	-	-	-	-	0.013	16.225	16.596	8.081	13.861	12.986	14.846	-	-
Fagundes/Airport	50.5	-	-	-	-	-	-	-	-	-	-	-	-	-
Subtotal District	593.5	-	-	-	-	0.013	22.870	20.931	18.801	23.489	22.201	35.310	-	-
TOTAL DELIVERED	1,949.6	4.593	25.475	2.552	7.236	13.813	76.024	105.727	98.459	90.142	80.690	68.299	9.171	1.740
ANNUAL (AF)														
Water Sold														
Golf Courses	405.0	1,016	1,084	1,085	1,073	1,007	943	967	993	994	995	979	958	950
Cemeteries	5.0	13	13	13	14	14	14	14	14	14	14	15	15	15
Parks	18.5	17	17	17	17	16	16	15	15	16	14	13	13	13
Schools	21.0	48	49	49	47	45	44	43	43	43	41	40	40	40
Commerical	167.6	304	311	311	301	291	285	285	290	297	299	298	292	288
Vineyards	564.0	2	3	3	3	3	3	4	6	7	6	11	13	14
Trucked Water	175.0	2	2	2	3	3	4	5	7	11	14	15	16	16
Subtotal Sales	1,356.1	1,402	1,480	1,480	1,457	1,379	1,308	1,333	1,367	1,381	1,383	1,371	1,346	1,337
District Use														
Jameson	330.0	315	315	315	315	315	325	257	228	178	142	187	187	187
Somky	213.0	242	242	242	242	242	271	283	231	217	212	254	254	254
Fagundes/Airport	50.5	-	-	-	-	-	-	-	-	-	-	-	-	-
Subtotal District	593.5	558	557	557	557	557	596	540	459	395	354	441	441	441
TOTAL DELIVERED	1,949.6	1,960	2,037	2,038	2,014	1,936	1,904	1,873	1,826	1,776	1,737	1,812	1,787	1,778

BIOSOLIDS HANDLING - MONTHLY

Site	Dec-13	Jan-14	Feb-14	Mar-14	Apr-14	May-14	Jun-14	Jul-14	Aug-14	Sep-14	Oct-14	Nov-14	Dec-14
<u>Land Applied by NSD</u>													
Somky	-	-	-	-	-	-	-	-	-	-	-	-	-
Airport/Fagundes	-	-	-	-	-	-	-	-	-	-	-	-	-
Jameson Canyon	123	111	13	4	4	116	119	164	139	92	127	46	-
Subtotal by NSD	123	111	13	4	4	116	119	164	139	92	127	46	-
<u>Land Applied by Contractor</u>													
Somky	-	-	-	-	-	-	-	-	-	-	-	-	-
Airport/Fagundes	-	-	-	-	-	-	-	-	-	-	-	-	-
Jameson Canyon	-	-	-	-	-	-	-	-	-	-	-	-	-
Subtotal by Contractor	-	-	-	-	-	-	-	-	-	-	-	-	-
Total Land Applied	123	111	13	4	4	116	119	164	139	92	127	46	-
Off Site (Contractor)		-	-	-	-	-	-	-	-	-	-	-	-
Total (tons)	123	111	13	4	4	116	119	164	139	92	127	46	-

COLLECTION SYSTEM MAINTENANCE - MONTHLY

CATEGORY	Dec-13	Jan-14	Feb-14	Mar-14	Apr-14	May-14	Jun-14	Jul-14	Aug-14	Sep-14	Oct-14	Nov-14	Dec-14
<u>Plugups</u>													
Total Calls	81	65	71	53	53	59	46	37	72	72	90	74	103
Business Hours	53	38	47	40	34	34	25	24	43	48	52	40	72
After Hours	28	27	24	15	19	25	21	13	19	24	38	34	31
District's	32	31	26	22	20	19	14	17	24	24	28	33	44
Property Owner's	49	34	45	31	33	40	32	20	48	48	62	41	59
Plugged Main Lines		1	2		2	2	1		2			1	1
Run Lateral w/Eel	135	273	244	125	143	143	134	130	112	102	86	109	53
<u>Cleaning (feet of sewer)</u>													
Vactor #1	36,881	49,693	33,747	29,490	24,378	54,965	50,184	65,507	47,147	52,012	50,908	47,862	50,640
Vactor #2		2,453	14,806	840	30,762	5,178	26,657	32,819	27,952	27,976	12,806	21,015	15,832
Hydro		-	-	-	-	-	-	-	-	-	-	-	-
Rodder	1,978	-	-	-	-	-	-	-	-	-	-	-	-
Total (feet)	38,859	52,146	48,552	30,330	55,140	60,143	76,841	98,326	75,099	79,988	63,714	68,877	66,472
<u>Cleaning Days</u>													
Vactor #1	12	19	11	11	12	17	16	16	14	17	18	16	17
Vactor #2		1	5	1	9	4	7	9	10	10	4	5	5
Hydro		-	-	-	-	-	-	-	-	-	-	-	-
Rodder	1	-	-	-	-	-	-	-	-	-	-	-	-
<u>Feet/day</u>													
Vactor #1	3,050	2,600	3,050	2,700	2,050	3,250	3,150	4,100	3,350	3,050	2,850	3,000	3,000
Vactor #2		2,450	2,950	850	3,400	1,300	3,800	3,650	2,800	2,800	3,200	4,200	3,150
Hydro													
Rodder	2,000												
<u>Video Inspections</u>													
Mains (feet)	9,992	11,405	12,116	15,005	8,461	9,187	3,352	7,843	18,993	26,085	20,893	6,392	16,020
Laterals (each)	219	341	329	195	197	154	186	170	191	202	215	192	166
<u>Construction (each)</u>													
Cleanouts	18	14	14	3	10	18	10	13	8	14	29	5	12
Laterals	9	9	9	-	1	4	7	14	6	3	8	4	-
Mains	-	-	-	2	-	1	-	2	2	4	-	-	-
Manholes	1	-	-	1	1	1	-	-	-	-	-	-	-
Other	2	3	-	-	-	-	-	-	-	1	-	-	1

COLLECTION SYSTEM MAINTENANCE - MONTHLY

CATEGORY	Dec-13	Jan-14	Feb-14	Mar-14	Apr-14	May-14	Jun-14	Jul-14	Aug-14	Sep-14	Oct-14	Nov-14	Dec-14
USA Markings													
Regular (w/in 2 days)	132	274	238	153	355	189	186	203	187	326	211	159	117
Emergency (w/in 2 hours)	16	5	11	10	8	10	8	21	181	82	30	28	16

WASTEWATER PLANT MAINTENANCE and LABORATORY DATA - MONTHLY

CATEGORY	Dec-13	Jan-14	Feb-14	Mar-14	Apr-14	May-14	Jun-14	Jul-14	Aug-14	Sep-14	Oct-14	Nov-14	Dec-14
<u>Scheduled</u>													
Old	68	59	42	69	71	65	82	70	45	47	75	69	68
New	106	74	86	96	85	66	98	73	78	109	73	58	84
Completed	115	91	59	94	91	49	110	98	76	82	79	59	84
New Balance	59	42	69	71	65	82	70	45	47	74	69	68	68
<u>Unscheduled</u>													
Old	59	61	67	81	62	59	55	60	54	59	60	64	61
New	47	33	29	31	31	22	28	28	37	31	40	23	33
Completed	45	26	15	50	34	26	23	34	32	31	36	26	25
New Balance	61	67	81	62	59	55	60	54	59	59	64	61	69
<u>Total Work Orders</u>													
Old	127	120	109	150	133	124	137	130	99	106	135	133	129
New	153	107	115	127	116	88	126	101	115	140	113	81	117
Completed	160	117	74	144	125	75	133	132	108	113	115	85	109
New Balance	120	109	150	133	124	137	130	99	106	133	133	129	137
<u>LAB ANALYSES</u>													
Sample Type													
Regulatory	376	349	357	386	439	655	642	159	354	355	355	393	353
Process Control	1,406	1,349	1,510	1,439	1,470	1,423	1,425	972	993	989	973	1,192	1,524
Special Request	10	-	-	17	-	9	18	-	51	1,542	26	6	34
Quality Control/Assurance	295	302	599	302	364	501	301	7	7	7	864	312	315
TOTAL	2,087	2,000	2,466	2,144	2,273	2,588	2,386	1,138	1,405	2,893	2,218	1,903	2,226

**Summary of NSD Capital Project Status
through 12/31/14**

Proj #	Description	FY 14-15 Budget	FY 13-14 Carryovers	Adj.	Final FY 14-15 Budget	Encumbrance	Costs Paid to Date	Budget Remaining	% Budget Expended
<u>COLLECTION SYSTEM</u>									
13701	Main Line Sewer Rehab	82,300	70,000	(500)	151,800	5,678	36,685	109,437	24%
13702	Manhole Raising/Rehab	180,100			180,100	44,250	48,166	87,684	27%
13703	Lateral Replacement/Rehab	67,200			67,200	-	32,458	34,742	48%
13704	Cleanouts Installation/Rehab	74,200			74,200	3,740	29,857	40,603	40%
13705	I&I Reduction Program	185,000			185,000	128,640	1,966	54,394	1%
13706	Basin L - I&I Reduction Project 2	-	475,000		475,000	-	1,750	473,250	0%
13707	Basin L - I&I Reduction Project 3	2,553,500	444,850		2,998,350	84,874	2,881,928	31,548	96%
14701	Basin L - I&I Reduction Project 4	1,000,000	(2,208)		997,792	-	31,981	965,811	3%
14702	North Napa 18" ACP & Soscol Ave 14" ACP	421,100	778,100		1,199,200	527,379	18,733	653,088	2%
14703	Browns Valley Rd & First St	500,000	485,800		985,800	8,027	948,431	29,342	96%
14735	Silverado Trail Sliplining Rehab	-	174,700		174,700	-	143,276	31,424	82%
15701	Upper Lateral Rehabilitation - Basin L	50,000			50,000	-	-	50,000	-
15702	Post St/Evans (Silverado Tr to Juarez)	381,600			381,600	-	2,185	379,415	1%
15703	Sarco Creek Pipeline Replacement - CalTRANS	20,000			20,000	-	-	20,000	-
15704	Siphon Rehabilitation #1	42,200		27,800	70,000	-	1,112	68,888	2%
15719	NNPS Force Main Abandonement Project	-		80,000	80,000	54,315	5,956	19,729	7%
<u>COLLECTION SYSTEM - EQUIPMENT</u>									
15705	Vehicle 154 - Ford Ranger	29,900		1,500	31,400	30,368	-	1,032	-
15706	Vehicle 19 - CIPP Trailer	14,000		500	14,500	-	14,484	16	100%
15720	Vehicle 173B - Ford F350	-		58,000	58,000	55,119		2,881	-
<u>LIFT STATIONS</u>									
13733	West napa Odor Control	-	20,150		20,150	-	2,444	17,706	12%
<u>TREATMENT</u>									
13713	Pond Aeration	-	1,252,650		1,252,650	271,433	772,933	208,285	62%
13714	Phase I Recycled Water Expansion	6,920,500	(2,055,183)	700,000	5,565,317	1,620,211	3,906,523	38,584	70%
<u>TREATMENT - EQUIPMENT</u>									
13715	Spare Digester Mixer	-	190,150		190,150	-	100	190,050	0%
13719	Area Drain & pond 1 Isolation Valves	-	75,500	44,500	120,000	10,500	99,432	10,068	83%
13721	Spare Chemical Pump	-	9,450		9,450	3,035	4,849	1,566	51%
13741	Secondary PS Pump Rebuild (3)	35,000			35,000	-	-	35,000	-

**Summary of NSD Capital Project Status
through 12/31/14**

Proj #	Description	FY 14-15 Budget	FY 13-14 Carryovers	Adj.	Final FY 14-15 Budget	Encumbrance	Costs Paid to Date	Budget Remaining	% Budget Expended
13743	Risidual Anlyzers (Deox) Replacements	-	59,900		59,900	-	-	59,900	-
14706	WWTP Clarifier Safety & Wiring Overhaul	-	55,000	(55,000)	-	-	-	-	-
14707	WWTP MP - Solids Handling Improvements	120,000		(11,500)	108,500	-	34,770	73,730	32%
14708	Gas Compressor Cooler	-	60,950		60,950	-	2,721	58,229	4%
14718	Maint - Stationary Gas Detector Replacement	-	98,850	55,000	153,850	-	11,770	142,080	8%
14719	Maint - Rotork Actuator Replacement	-	79,950		79,950	1,570	21,128	57,252	26%
14720	Maint - Belt Press Polymer Skid Replacement	-	30,000		30,000	-	-	30,000	-
14723	Vehicle 162 - Ford F-250 Diesel	30,000			30,000	-	480	29,520	2%
14724	Vehicle 167 - Ford F-350	-	44,000		44,000	-	-	44,000	-
14732	Maint - TWAS Pump Replacement	-	30,000		30,000	-	23,706	6,294	79%
15707	DAFT Overflow Pumps (2)	10,000			10,000	-	-	10,000	-
15708	Turbidmeters Tertiary Replacements (7)	11,000			11,000	-	-	11,000	-
15709	Effluent Overflow Meter	120,000		25,000	145,000	-	17,922	127,078	12%
15710	Amperometric Titrator Replacment	5,000			5,000	-	4,395	605	88%
15711	Maint - Rotork Actuator Replacement	82,400			82,400	-	544	81,856	1%
15712	Rehabilitate Pond 1 Storage Structure	5,000			5,000	-	-	5,000	-
15713	Aeration Basin Instrumentation and Control	50,000			50,000	-	104	49,896	0%
						-			
	<u>TREATMENT - STRUCTURES</u>					-			
13724	IPS Expansion	7,802,900	3,943,600	300,000	12,046,500	5,081,134	6,876,123	89,243	57%
15714	WWTP MP - Pond Improvements Phase 2	50,000			50,000	-	-	50,000	-
						-			
	<u>SCADA</u>					-			
13725	SCADA Server Replacement	16,000	24,385	64,000	104,385	101,408	365	2,612	0%
15715	SCADA Server Replacement	16,000		(16,000)	-	-	-	-	-
15716	SCADA PLC Replacement	38,000		(38,000)	-	-	-	-	-
						-			
	<u>RECYCLING - DISTRICT</u>					-			
15717	Isolation Valve on Kirkland Line (Devlin Road)	15,000			15,000	-	-	15,000	-
						-			
	<u>RECYCLING - EXPANSION</u>					-			
13727	North Bay Wate Reuse Project	500,000			500,000	12,500	478,729	8,771	96%
14726	MST RW Pipeline Construction	7,000,000	4,509,410	(1,509,410)	10,000,000	8,661,893	1,141,622	196,485	11%
14727	Split N/S Lines, surge protection	318,000	268,850		586,850	308,503	66,698	211,649	11%
14733	LCWD Recycled Water Pipeline	43,000	3,300		46,300	6,042	36,092	4,166	78%

**Summary of NSD Capital Project Status
through 12/31/14**

Proj #	Description	FY 14-15 Budget	FY 13-14 Carryovers	Adj.	Final FY 14-15 Budget	Encumbrance	Costs Paid to Date	Budget Remaining	% Budget Expended
15718	LCWD Recycled Water Pipeline - Construction	8,000,000		(6,000,000)	2,000,000	-	-	2,000,000	-
						-			
						-			
	<u>OTHER</u>								
13729	Development Technical Support	214,000			214,000	-	90,302	123,698	42%
GRAND TOTAL ALL PROJECTS		\$37,002,900	\$11,127,154	(\$6,274,110)	\$41,855,944	\$17,020,619	\$17,792,718	\$7,042,607	43%