



Napa Sanitation District

General Manager's Report

for

May 2012

Contents:

- a. Transmittal Memo
- b. Budget Status and Cash Summary
- c. Key Information Graphs – Fund Balances, Treatment Plant and Collection
- d. Fund Balances
- e. Development Processing
- f. Construction Inspection
- g. Pollution Prevention
- h. Recycled Water Deliveries
- i. Biosolids Handling
- j. Collection System Maintenance
- k. Treatment Plant Operations
- l. Treatment Plant Maintenance & Laboratory
- m. Capital Project Expenditure Summary



NAPA SANITATION DISTRICT

General Manager's Report

Dedicated to Preserving the Napa River for Generations to Come

DATE: July 18, 2012
FROM: Timothy B. Healy, General Manager
SUBJECT: General Manager's Report for May, 2012

REGULATORY COMPLIANCE:

Collection System Compliance:	0 Category 1 SSO's, 9 Category 2 SSO's
NPDES Permit (WWTP) Compliance:	Full compliance with all regulations
Air Quality Compliance:	Full compliance with all regulations
Recycled Water Compliance:	Full compliance with all regulations
Biosolids Compliance:	Full compliance with all regulations
Significant Comments:	None

FISCAL STATUS:

Period Covered:	July 1, 2011 – May 31, 2012
Percent Fiscal Year:	91.7%
Operating Expenditures to date:	83.4%
Historical Expenditures to date:	86.5%
Significant Comments:	The Operating Expenditures includes 75% of the \$3,967,778 Operating Transfer to the Capital Fund that was authorized by the Board.

PERSONNEL:

New Hires:	None
Separations:	None
Promotions:	None
Recruitment Activities:	Operator I recruitment – interviews held.
Injuries:	None

Summaries of Operational Highlights are on following pages.

COLLECTIONS:

Significant events for the month of May, 2012 in Collection System Maintenance include:

- The District had 0 Category 1 Sanitary Sewer Overflows (SSO's) during the month and 9 Category 2 SSO's during the month. (A Category 1 is defined as an SSO that reached a drainage channel and/or surface water or; an SSO that reached a storm drain pipe that was not fully recovered and returned to the sanitary sewer system or; an SSO that is greater than 1,000 gallons. All other SSO's are considered Category 2. These are usually minor overflows of less than 10 gallons from cleanouts on District laterals that can be cleaned up by the crews.)
- District crews began installing lateral liners in mid May and completed 6 installations by the end of the month. Crews are mainly focusing on areas that City of Napa crews will be paving beginning in July of this year.
- Collection Department crew members went through a one day Loader / Backhoe recertification course. All crew members are now recertified for a period of three years.
- Vactor crews spent 1 day assisting the treatment plant.

TREATMENT PLANT:

Significant events for the month of May 2012 in the Treatment Plant Department:

Plant Operations

- For May 2012, the plant's influent flow was 239.3 MG as compared to last year flow for May 2011 of 289.8 MG
- There was no flow to the Napa River for the month of May.
- The production of recycle quality water occurred for 31 days during May 2012 with a total flow of 88.9 MG.
- This May power consumption purchased from PG&E was 393 MWH in comparison to May 2011 purchase of 392 MWH. During the month of May the cogen was run on natural gas for extended periods of time due to solenoid valve testing.
- There was 0.6" of rain fall for May 2012 as compared to 1.9" rain fall for May 2011.
- Pond 4 end of the month recorded level reading was 51.3" as compared to May 2011 of 51.4".

Maintenance

- Cogeneration uptime for May – 74.60%

Laboratory

- Monthly Reclamation Discharge Effluent (E-1) monitoring was conducted on May 3rd, 2012. All reclamation discharge effluent sample results received were within the NSD Water Reuse Agronomic Limit requirements.
- Monthly Influent (INF-001) monitoring was conducted on May 3rd, 2012. All influent sample results received indicated no unusual results and were within local limits.

RECYCLING:

Significant events in the Recycling Department for May 2012 include:

- Recycled water delivery for the month of May 2012 (79.662 million gallons), as compared to May 2011 (68.996 million gallons) is higher due to district operations.
- Staff resumed biosolids land application activities at the Jameson Reuse Site.

POLLUTION PREVENTION:

Significant events in the Pollution Prevention Department for May 2012 include:

- The NSD-supported Clinic Ole medication collection program collected 116 pounds of unneeded medications during May. The total amount of unneeded medications collected since its inception in September 2010 is 2,892 pounds.
- Staff participated in a classroom presentation program at Union Sanitary District, with the goal to develop a similar program for NSD. This service would be especially important for school groups that are not able to participate in a field trip to the treatment plant.
- The District issued 46 washing machine rebates during the month of May @ \$25 each, for a total of \$1,150.

ENGINEERING / CAPITAL PROJECTS / DEVELOPMENT

Significant events occurring in the Engineering Department for May 2012 include:

- The consultant continued environmental work for the EIR/EIS amendment for the MST Recycled Water Pipeline Project.
- The consultant continued design of the Phase 1 Recycled Water Expansion Project.
- The consultant continued the West Napa Pump Station Odor Control feasibility study.
- The contractor continued construction of the Imola Avenue Recycled Water Pipeline.
- Staff continued design of the Basin "L" Pipeline Rehabilitation Project No. 2 Project.
- The construction coordination began on the SCADA Phase IV Project and Rotork Controller Replacement.

General Manager's Report

July 18, 2012

Page 4

- Construction of the FOG Receiving Station continued and work is proceeding on schedule.
- Construction of the Basin "L" Pipeline Rehabilitation Project No. 1 Project continued and work is proceeding on schedule.
- The consultant continued design of the Influent Pump Station (IPS) Expansion Project. A workshop was held on May 3, 2012 to discuss the 3 alternatives for the pump station design. At the conclusion of the workshop, the District selected the design for a new self cleaning trench style pump station and abandoning the existing IPS.
- Staff received 21 sets of development plans for review and deemed 10 sets of plans complete. The projects consisted of 6 commercial tenant improvements, 2 commercial buildings and 2 residential units.

Budget Status & Cash Summary - July 1, 2011 - May 31, 2012 (91.7% of the year)

<i>Expenditures</i>	FY 11/12 Budget	Expenditures to date	Encumbrances	Committed to date	Remaining Balance	Percent Committed
Operations & Maintenance						
Salaries & Benefits	\$7,632,408	\$6,242,529	\$0	\$6,242,529	\$1,389,879	81.8%
Services & Supplies	5,439,670	4,037,810	681,563	4,719,373	720,297	86.8%
Taxes	25,050	23,638	-	23,638	1,412	94.4%
Debt Service	2,750,548	2,568,981	-	2,568,981	181,567	93.4%
Operating Transfer Out	3,967,778	2,975,834	-	2,975,834	991,944	75.0%
Total O & M:	\$19,815,454	\$15,848,792	\$681,563	\$16,530,355	\$3,285,099	83.4% ^①
Capital						
Bldgs/Improvements & Equip	\$12,024,281	\$5,832,389	\$2,643,266	\$8,475,655	\$3,548,626	70.5% ^②
Operating Transfer Out	1,584,700	1,494,763	-	1,494,763	89,937	94.3%
Total Capital :	\$13,608,981	\$7,327,152	\$2,643,266	\$9,970,418	\$3,638,563	73.3%
Grand Total Expenditures:	\$33,424,435	\$23,175,944	\$3,324,829	\$26,500,773	\$6,923,662	79.3%

<i>Revenues</i>	FY 11/12 Budget	Collected Revenue to date	Encumbrances	Received to Date	Uncollected Revenue	Percent Collected
Operations & Maintenance						
Charges for Capital Services	\$617,300	\$637,371		\$637,371	(\$20,071)	103.3%
Interest Earned	90,000	65,715		65,715	24,285	73.0%
Lease	156,110	119,355		119,355	36,755	76.5%
Sewer Use Fees	17,733,620	17,116,689		17,116,689	616,931	96.5%
Septic Haulers Fees	215,480	145,825		145,825	69,655	67.7%
Reclaimed Water Fees	276,830	207,031		207,031	69,799	74.8%
Miscellaneous	18,000	135,529		135,529	(117,529)	752.9% ^③
Total O & M:	\$19,107,340	\$18,427,515		\$18,427,515	\$679,825	96.4%
Capital						
Interest Earned	68,500	19,847		19,847	48,653	29.0% ^④
Capacity Charges	1,165,980	917,331		917,331	248,649	78.7%
Inspection Fees	10,980	62,521		62,521	(51,541)	569.4% ^⑤
Miscellaneous (Sale of Property)	2,900,000	107,681		107,681	2,792,319	3.7% ^⑥
County of Napa Contribution	595,500	487,625		487,625	107,875	81.9%
Other Grants (ARRA)	1,000,000	907,189		907,189	92,811	90.7%
Operating Transfer In	5,552,478	4,470,597		4,470,597	1,081,881	80.5%
Total Capital:	11,293,438	6,972,791		6,972,791	4,320,647	61.7%
Grand Total Revenue:	\$30,400,778	\$25,400,306	\$0	\$25,400,306	\$5,000,472	83.6%

(5/31/12 - Earnings Rate = 0.5965%)

Cash Reserves as of 5/31/12 (excluding Debt Service restricted funds)

General Fund	\$15,812,443
Expansion Fund	0
Rehab Fund	3,445,692
	<u>\$19,258,135</u>

1 Includes Operating Transfer Out; otherwise is 85.5%

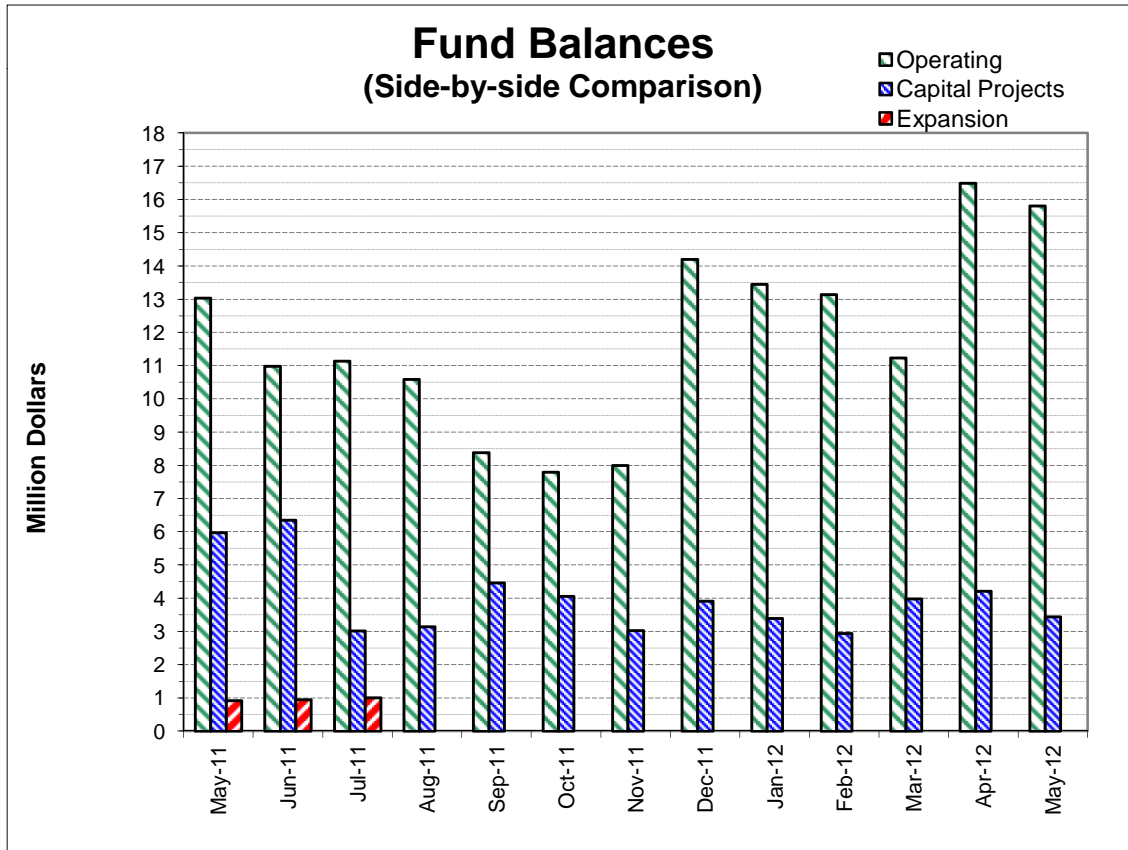
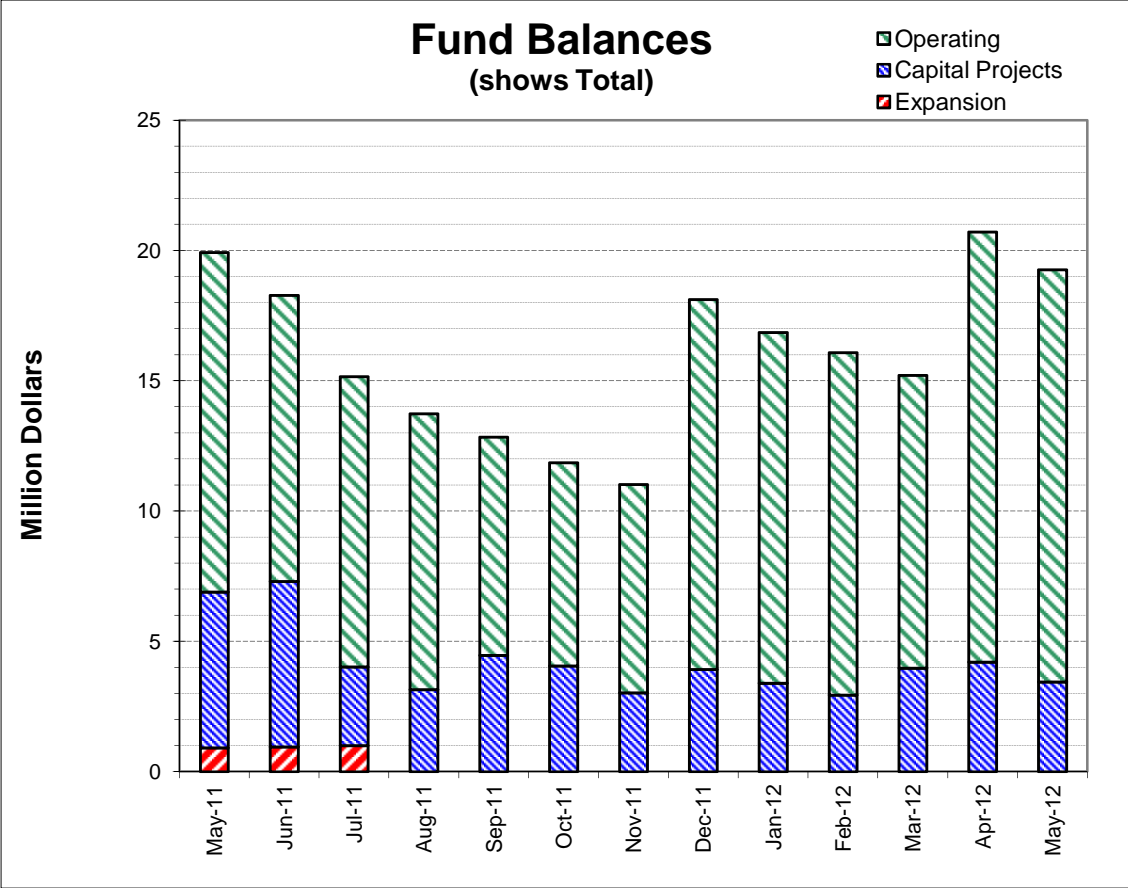
2 See Capital Project Status report for details

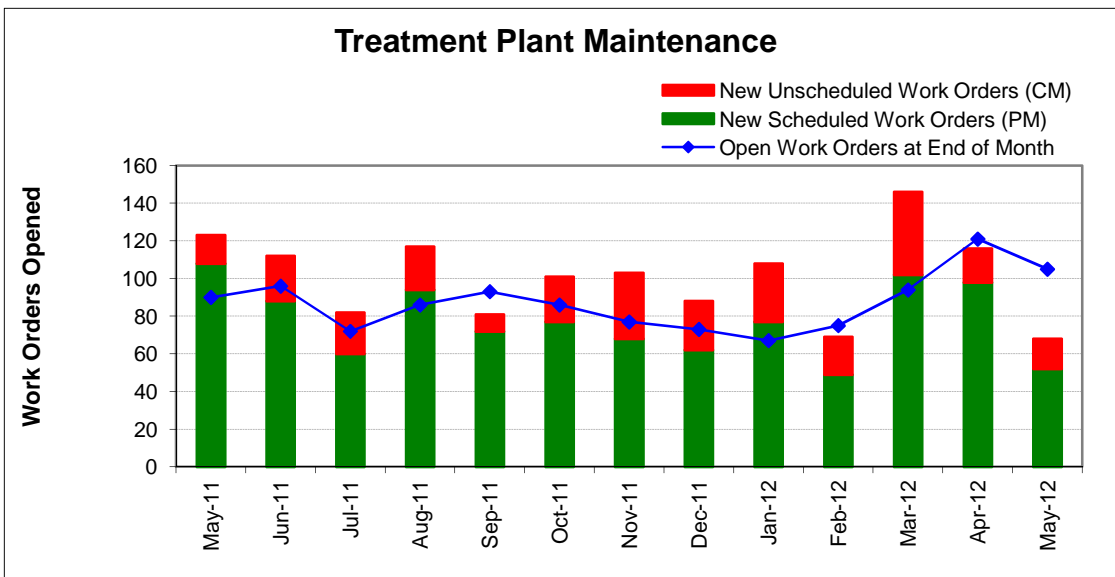
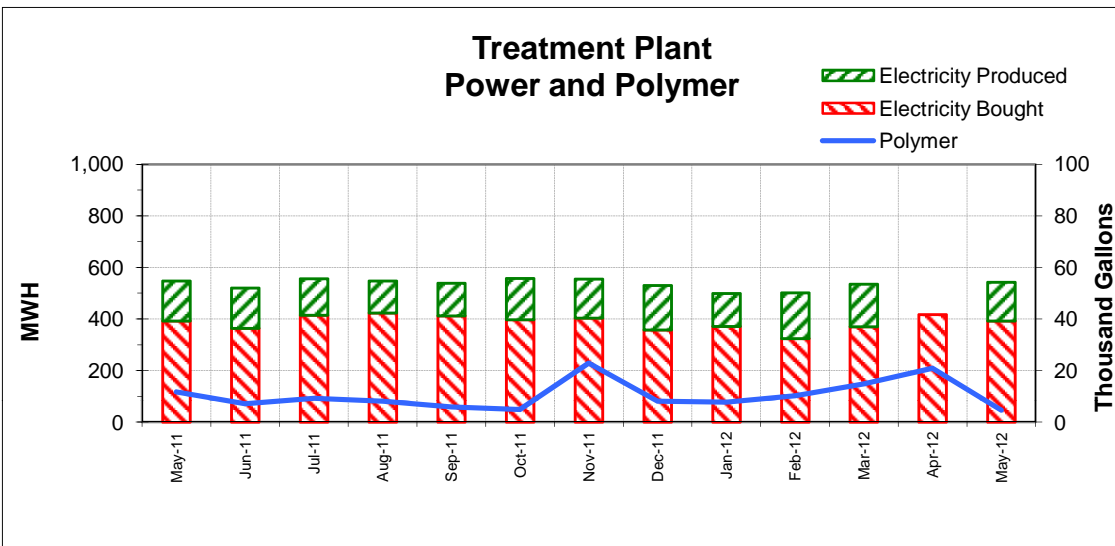
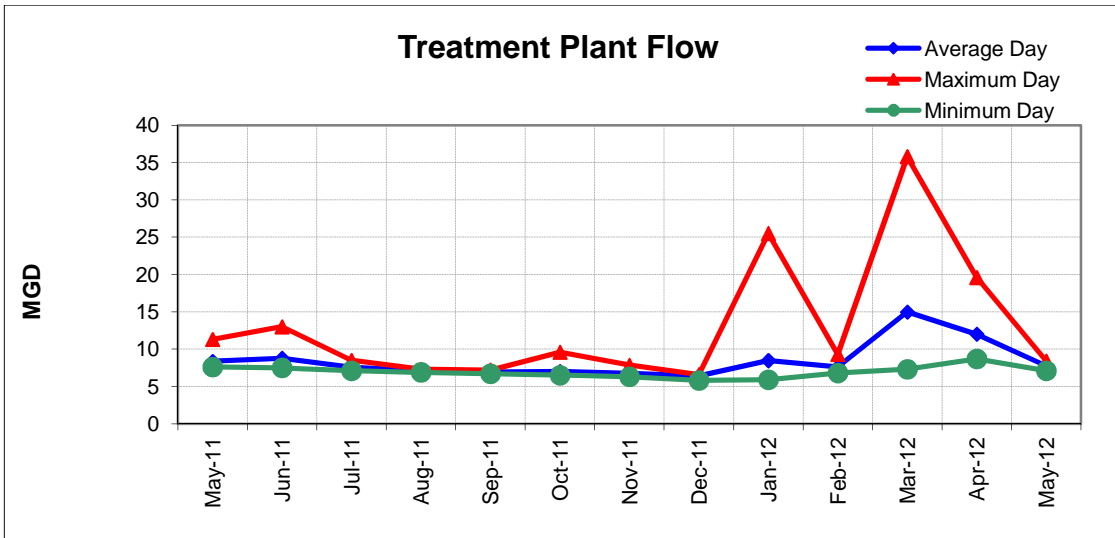
3 Includes WC Dividend Check

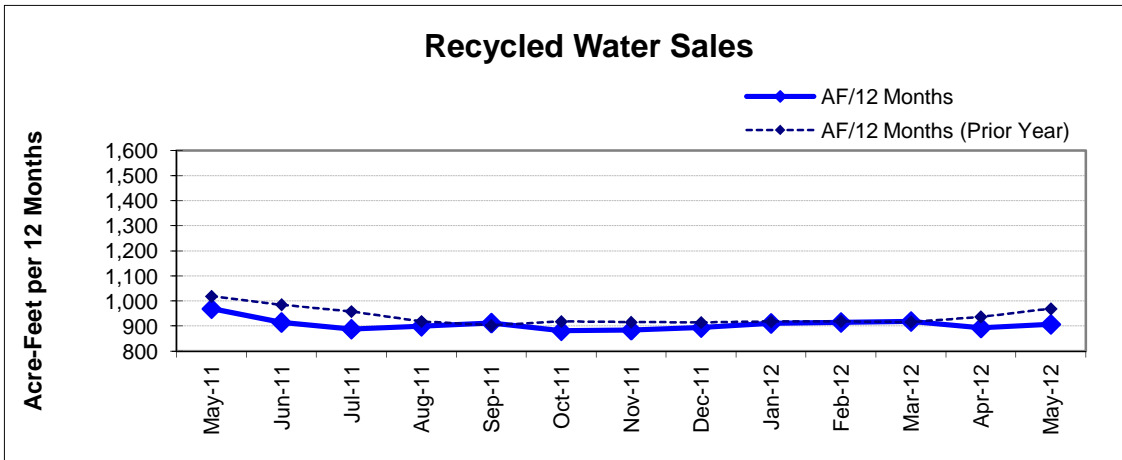
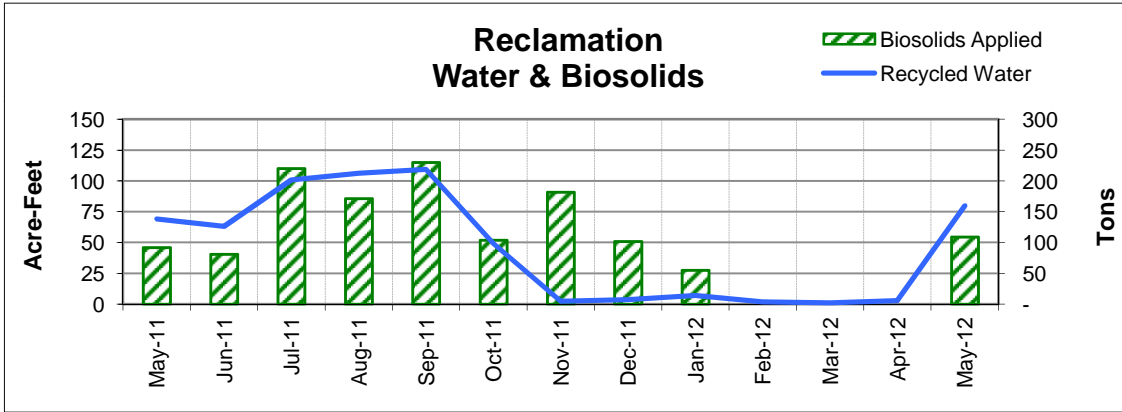
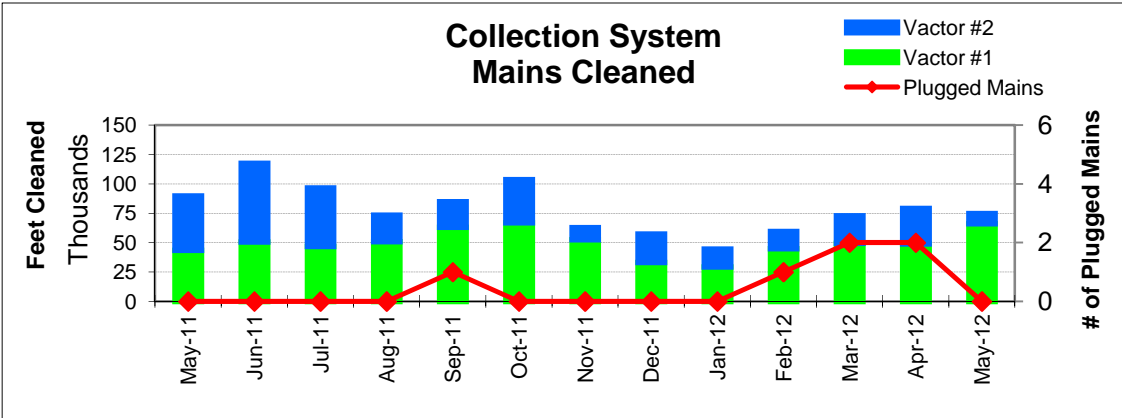
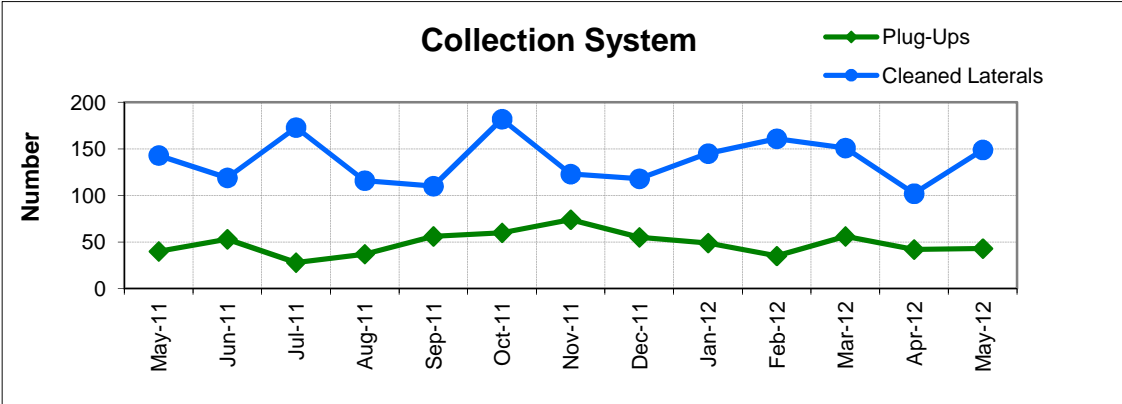
4 Interest rate has been lower than anticipated (60 - 80 basis points)

5 Received annexation fees from Stanly Ranch

6 Proceeds will not be received until project completion







FUND BALANCES - MONTHLY

CATEGORY	May-11	Jun-11	Jul-11	Aug-11	Sep-11	Oct-11	Nov-11	Dec-11	Jan-12	Feb-12	Mar-12	Apr-12	May-12
<i>(Thousand Dollars)</i>													
7800	13,033	10,980	11,139	10,590	8,379	7,795	7,994	14,200	13,453	13,139	11,230	16,496	15,812
7850	-	-	-	-	-	-	-	-	-	-	-	-	-
Subtotal Operating Fund	13,033	10,980	11,139	10,590	8,379	7,795	7,994	14,200	13,453	13,139	11,230	16,496	15,812
Capital Replacement Fund	5,977	6,354	3,014	3,145	4,461	4,059	3,029	3,918	3,397	2,938	3,977	4,211	3,446
Total Discretionary Funds	19,010	17,334	14,153	13,735	12,840	11,854	11,023	18,118	16,850	16,077	15,207	20,707	19,258
Expansion Fund (Restricted)	915	946	1,005	-	-	-	-	-	-	-	-	-	-
Total Restricted Funds	915	946	1,005	-	-	-	-	-	-	-	-	-	-
TOTAL ALL FUNDS	19,925	18,280	15,158	13,735	12,840	11,854	11,023	18,118	16,850	16,077	15,207	20,707	19,258

DEVELOPMENT WORKLOAD - MONTHLY

CATEGORY	May-11	Jun-11	Jul-11	Aug-11	Sep-11	Oct-11	Nov-11	Dec-11	Jan-12	Feb-12	Mar-12	Apr-12	May-12
<u>Phone Requests</u>													
Maps/Drawings	2	3	2	9	3	1	4	1	2	5	6	2	2
Lateral Permits	-	-	-	-	-	-	-	-	1	1	-	-	-
Policy Questions	5	11	6	3	5	3	6	2	10	11	8	9	11
Development Questions	24	20	17	19	7	6	9	7	12	18	17	26	29
Miscellaneous	11	6	3	9	8	5	9	4	10	4	8	6	11
TOTAL	42	40	28	40	23	15	28	14	35	39	39	43	53
<u>Counter Requests</u>													
Maps/Drawings	1	3	2	1	2	4	3	1	2	4	3	1	1
Lateral Permits	6	-	10	-	3	10	5	-	12	1	5	-	6
Policy Questions	2	5	5	2	1	5	-	1	1	2	8	6	-
Development Questions	1	10	8	3	5	5	2	1	6	3	6	6	10
Miscellaneous	3	5	11	-	8	1	1	-	-	-	-	2	1
TOTAL	13	23	36	6	19	25	11	3	21	10	22	15	18
Initial Request (Referrals)	-	14	4	4	3	10	8	13	5	5	6	14	14
<u>Connection Permits Issued</u>													
Residential Permits	2	-	10	4	1	24	1	-	12	21	3	1	2
Commercial Permits	4	5	5	7	2	1	1	3	6	2	2	3	1
Industrial Permits	-	-	-	-	-	-	-	-	-	-	-	-	-
TOTAL PERMITS	6	5	15	11	3	25	2	3	18	23	5	4	3
Residential Units	2	-	2	4	2	24	1	-	12	21	3	1	3
Commercial Units	4	5	5	7	2	1	1	3	6	2	2	3	1
TOTAL UNITS	6	5	7	11	4	25	2	3	18	23	5	4	4
<u>Annexations</u>													
Submitted	-	1	-	-	-	-	-	1	-	-	-	-	-
Acreage	-	470.00	-	-	-	-	-	0.90	-	-	-	-	-
<u>Plans Reviewed</u>													
<u>Subdivisions/Sites</u>													
First Submittal	2	2	-	2	1	-	1	-	1	1	1	3	2
Second Submittal	-	-	-	-	-	-	-	-	-	-	-	1	1
Third Submittal	-	-	-	-	-	-	-	-	-	-	-	1	1
<u>Building/Tenant Improvements</u>													
First Submittal	11	13	8	6	6	2	5	9	7	6	2	6	5
Second Submittal	3	1	-	-	-	1	-	1	1	1	-	2	3
Third Submittal	1	1	-	-	-	-	-	-	1	-	1	-	1
<u>Miscellaneous Plan Reviews</u>													
TOTAL PLANS REVIEWED	17	17	8	8	7	3	6	11	10	9	4	13	13

INSPECTION WORKLOAD - MONTHLY

CATEGORY	May-11	Jun-11	Jul-11	Aug-11	Sep-11	Oct-11	Nov-11	Dec-11	Jan-12	Feb-12	Mar-12	Apr-12	May-12
<u>CONSTRUCTION</u>													
Locating Sewers	2	1	3	-	4	1	2	-	-	-	-	-	1
Permit Processing	-	2	-	-	1	-	-	-	-	-	-	-	-
Preconstruction Meetings	6	2	1	4	1	2	-	1	4	4	-	-	-
Inspections - Mains	-	2	1	-	1	-	-	-	-	-	-	-	-
Inspections - Manholes	4	12	12	26	17	31	45	36	33	17	-	1	6
Inspections - Laterals	7	11	3	17	10	6	9	1	17	7	4	3	2
Inspections - Cleanouts	14	8	3	39	9	6	48	15	29	26	12	9	8
Inspections - Review Video	-	1	1	1	2	-	4	2	-	-	-	-	-
Demo - Septic Tanks	-	-	1	-	-	-	-	-	-	-	-	-	-
Demo - Buildings	-	-	-	-	-	-	3	-	-	-	-	-	1
Update Record Drawings	-	-	-	-	-	-	-	-	-	-	-	-	-
TOTAL	33	39	25	87	45	46	111	55	83	54	16	13	18
<u>MISCELLANEOUS</u>													
Meter Readings	-	-	-	-	-	-	-	29	-	-	-	-	-
Washdown Facility Inspections	-	-	-	-	-	-	-	-	-	-	-	-	-
General Customer Assistance	5	11	-	15	12	4	18	-	17	-	7	-	7
City of Napa Water Discharge	-	-	-	-	-	-	-	-	-	-	-	-	-
TOTAL	5	11	-	15	12	4	18	29	-	-	7	-	7
<u>SPECIAL PROJECTS</u>	-	-	-	-	-	-	-	17	22	18	26	33	42

POLLUTION PREVENTION WORKLOAD - MONTHLY

CATEGORY	May-11	Jun-11	Jul-11	Aug-11	Sep-11	Oct-11	Nov-11	Dec-11	Jan-12	Feb-12	Mar-12	Apr-12	May-12
<u>Outreach Activities</u>													
Plant Tours Conducted	11	-	-	-	2	8	1	-	-	2	-	5	-
Presentations Made	-	-	-	1	-	-	-	-	-	-	-	-	-
Total Outreach Activities	11	-	-	1	2	8	1	-	-	2	-	5	-
<u>Inspections Conducted</u>													
Food Service Facilities	-	-	-	-	-	-	-	-	-	-	2	13	30
Medical Facilities	-	-	-	-	-	-	-	-	-	-	-	-	-
Auto Body & Car Wash	-	-	-	-	-	-	-	-	-	-	-	-	-
Other	-	-	-	-	-	-	-	-	-	-	-	-	-
Total Inspections	-	-	-	-	-	-	-	-	-	-	2	13	30
<u>Compliance Issues</u>													
NOVs Issued	-	-	-	-	-	-	1	-	2	1	1	-	2
NOEs Issued	-	-	-	-	-	-	1	-	2	2	-	-	-
Non-Compliant-FOG	-	-	-	-	-	-	-	-	-	-	1	-	-
Total Compliance Issues	-	-	-	-	-	-	2	-	4	3	2	-	2
<u>Pollution Prevention</u>													
Clothes Washer Rebates	-	131	-	110	-	100	42	65	69	71	-	-	46
Toilet Retrofit Rebates	12	15	9	4	6	-	8	7	3	2	-	7	-
Pharmaceuticals Diverted (in lbs)	119	150	102	104	178	883	104	244	115	128	219	135	116

RECYCLED WATER DELIVERIES - MONTHLY

	<i>Acres</i>	<i>May-11</i>	<i>Jun-11</i>	<i>Jul-11</i>	<i>Aug-11</i>	<i>Sep-11</i>	<i>Oct-11</i>	<i>Nov-11</i>	<i>Dec-11</i>	<i>Jan-12</i>	<i>Feb-12</i>	<i>Mar-12</i>	<i>Apr-12</i>	<i>May-12</i>
MONTHLY (MG)														
Water Sold														
Golf Courses	405.0	33.259	28.667	46.476	48.827	39.960	9.332	0.460	2.658	4.967	0.078	0.049	0.317	36.754
Cemeteries	5.0	0.930	0.403	0.840	0.904	0.709	0.048	-	-	-	-	-	-	0.738
Parks	18.5	0.920	0.369	0.847	1.048	0.520	0.116	0.053	0.028	0.071	0.001	-	-	0.691
Schools	7.6	1.350	1.005	1.972	1.848	1.279	0.728	0.042	0.085	0.340	0.201	0.001	0.055	2.046
Commerical	-	8.462	7.939	9.519	8.912	10.066	5.447	1.491	0.894	1.505	1.386	1.061	2.330	9.250
Vineyards	433.0	0.057	0.053	0.031	0.001	-	0.001	0.000	0.000	0.001	-	0.002	0.002	0.006
Trucked Water	-	0.011	-	0.003	0.006	0.016	-	0.004	-	0.001	0.003	-	-	0.006
Subtotal Sales	869.1	44.988	38.435	59.688	61.547	52.550	15.672	2.050	3.666	6.884	1.669	1.113	2.704	49.491
District Use														
Jameson	330.0	13.171	13.865	22.912	23.114	32.355	20.729	0.306	-	-	0.006	0.011	0.004	22.438
Somky	213.0	10.807	10.845	18.127	21.631	24.448	12.614	0.040	0.004	0.002	0.001	-	-	7.734
Fagundes/Airport	150.0	-	-	-	-	-	-	-	-	-	-	-	-	-
Subtotal District	693.0	23.978	24.710	41.039	44.745	56.803	33.343	0.346	0.004	0.002	0.007	0.011	0.004	30.172
TOTAL DELIVERED	1,562.1	68.966	63.145	100.727	106.292	109.353	49.015	2.396	3.669	6.886	1.675	1.124	2.708	79.663
ANNUAL (AF)														
Water Sold														
Golf Courses	405.0	722	671	649	667	680	656	657	665	681	681	681	660	671
Cemeteries	5.0	14	13	14	13	13	12	12	12	12	12	12	12	11
Parks	18.5	13	12	11	11	12	12	12	12	12	12	12	12	11
Schools	7.6	42	40	37	33	30	27	27	27	28	28	28	27	29
Commerical	-	171	173	173	172	176	173	175	176	177	181	184	181	184
Vineyards	433.0	5	4	4	3	1	0	0	0	0	0	0	0	0
Trucked Water	-	2	2	1	0	0	0	0	0	0	0	0	0	0
Subtotal Sales	869.1	969	914	887	900	912	881	884	893	911	915	918	893	907
District Use														
Jameson	330.0	498	448	400	365	379	388	389	389	389	389	389	388	417
Somky	213.0	299	293	275	277	294	302	302	302	302	302	302	302	293
Fagundes/Airport	150.0	-	-	-	-	-	-	-	-	-	-	-	-	-
Subtotal District	693.0	797	741	675	642	673	690	691	691	691	691	691	690	709
TOTAL DELIVERED	1,562.1	1,766	1,655	1,563	1,541	1,585	1,571	1,575	1,585	1,602	1,606	1,609	1,583	1,616

BIOSOLIDS HANDLING - MONTHLY

Site	May-11	Jun-11	Jul-11	Aug-11	Sep-11	Oct-11	Nov-11	Dec-11	Jan-12	Feb-12	Mar-12	Apr-12	May-12
<u>Land Applied by NSD</u>													
Somky	-	-	-	-	-	-	-	-	-	-	-	-	-
Airport/Fagundes	-	-	-	-	-	-	-	-	-	-	-	-	-
Jameson Canyon	92	81	220	172	230	104	182	102	55	-	-	-	109
Subtotal by NSD	92	81	220	172	230	104	182	102	55	-	-	-	109
<u>Land Applied by Contractor</u>													
Somky	-	-	-	-	-	-	-	-	-	-	-	-	-
Airport/Fagundes	-	-	-	-	-	-	-	-	-	-	-	-	-
Jameson Canyon	-	-	-	-	-	-	-	-	-	-	-	-	-
Subtotal by Contractor	-	-	-	-	-	-	-	-	-	-	-	-	-
Total Land Applied	92	81	220	172	230	104	182	102	55	-	-	-	109
Off Site (Contractor)	-	-	-	-	-	-	-	-	-	-	-	-	-
Total (tons)	92	81	220	172	230	104	182	102	55	-	-	-	109

COLLECTION SYSTEM MAINTENANCE - MONTHLY

CATEGORY	May-11	Jun-11	Jul-11	Aug-11	Sep-11	Oct-11	Nov-11	Dec-11	Jan-12	Feb-12	Mar-12	Apr-12	May-12
<u>Plugups</u>													
Total Calls	40	53	28	37	56	60	74	55	49	35	56	42	43
Business Hours	29	33	17	24	44	42	52	36	35	27	38	21	23
After Hours	11	20	11	13	12	18	22	19	14	8	18	21	20
District's	9	22	18	12	21	23	31	16	20	18	28	15	15
Property Owner's	31	31	10	25	35	37	43	39	29	17	28	27	28
Plugged Main Lines	-	-	-	-	1	-	-	-	-	1	2	2	
Run Lateral w/Eel	143	119	173	116	110	182	123	118	145	161	151	102	149
<u>Cleaning (feet of sewer)</u>													
Vactor #1	43,642	50,540	46,817	51,030	63,229	67,000	52,625	33,385	29,396	45,073	49,543	49,171	66,109
Vactor #2	46,108	66,970	49,928	22,393	21,771	36,819	10,307	24,133	15,159	14,529	23,494	30,106	8,837
Hydro	-	-	-	-	-	-	-	-	-	-	-	-	-
Rodder	-	-	-	1,074	-	-	-	2,840	-	-	-	-	-
Total (feet)	89,750	117,510	96,745	74,497	85,000	103,818	62,932	60,359	44,555	59,601	73,037	79,277	74,946
<u>Cleaning Days</u>													
Vactor #1	15	15	10	19	16	18	16	12	10	16	16	13	16
Vactor #2	16	12	14	8	9	11	4	7	7	7	9	5	4
Hydro	-	-	-	-	-	-	-	-	-	-	-	-	-
Rodder	-	-	-	2	-	-	-	4	-	-	-	-	-
<u>Feet/day</u>													
Vactor #1	2,850	3,350	4,700	2,700	3,900	3,700	3,250	2,800	2,950	2,750	3,100	3,800	4,150
Vactor #2	2,900	5,600	3,550	2,800	2,400	3,450	2,950	3,450	2,350	2,100	2,600	6,000	2,200
Hydro													
Rodder				550				700					
<u>Video Inspections</u>													
Mains (feet)	12,192	11,693	10,433	24,702	13,044	-	21,043	11,521	10,257	5,034	12,593	14,551	17,466
Laterals (each)	221	172	201	154	167	269	197	170	195	198	208	145	201
<u>Construction (each)</u>													
Cleanouts	18	16	6	24	9	19	18	4	11	13	9	21	21
Laterals	1	5	7	9	1	8	4	-	3	2	2	1	7
Mains	-	-	-	-	-	-	2	-	-	-	-	-	1
Manholes	-	-	-	-	-	-	-	-	-	-	-	-	1
Other	-	-	-	-	-	3	-	-	2	2	-	-	3

COLLECTION SYSTEM MAINTENANCE - MONTHLY

CATEGORY	May-11	Jun-11	Jul-11	Aug-11	Sep-11	Oct-11	Nov-11	Dec-11	Jan-12	Feb-12	Mar-12	Apr-12	May-12
USA Markings													
Regular (w/in 2 days)	131	133	124	152	156	148	104	83	135	149	109	139	155
Emergency (w/in 2 hours)	9	12	13	17	21	8	8	31	5	8	11	8	16

WASTEWATER PLANT MAINTENANCE and LABORATORY DATA - MONTHLY

CATEGORY	May-11	Jun-11	Jul-11	Aug-11	Sep-11	Oct-11	Nov-11	Dec-11	Jan-12	Feb-12	Mar-12	Apr-12	May-12
<u>Scheduled</u>													
Old	55	49	57	29	48	62	58	50	49	43	50	46	66
New	108	88	60	94	72	77	68	62	77	49	102	98	52
Completed	114	80	88	75	58	81	76	63	83	42	106	78	62
New Balance	49	57	29	48	62	58	50	49	43	50	46	66	56
<u>Unscheduled</u>													
Old	44	41	39	43	38	31	28	27	24	24	25	48	55
New	15	24	22	23	9	24	35	26	31	20	44	18	16
Completed	18	26	18	28	16	27	36	29	31	19	21	25	22
New Balance	41	39	43	38	31	28	27	24	24	25	48	55	49
<u>Total Work Orders</u>													
Old	90	90	96	72	86	93	86	77	73	67	75	94	121
New	123	112	82	117	81	101	103	88	108	69	146	116	68
Completed	132	106	106	103	74	108	112	92	114	61	127	103	84
New Balance	81	96	72	86	93	86	77	73	67	75	94	107	105
<u>LAB ANALYSES</u>													
Sample Type													
Regulatory	376	334	359	401	368	490	367	377	413	296	343	318	347
Process Control	768	634	699	757	712	897	976	911	965	1,399	1,243	1,255	642
Special Request	-	-	-	-	-	-	-	-	-	-	16	56	23
Quality Control/Assurance	579	514	562	559	520	561	506	513	494	53	57	58	60
TOTAL	1,723	1,482	1,620	1,717	1,600	1,948	1,849	1,801	1,872	1,748	1,659	1,687	1,072

This page intentionally left blank.

**Summary of NSD Capital Project Status
through 5/31/12**

Proj #	Description	Original Budget	FY 10-11 Carryovers	Adj.	Final Budget	Costs Paid to Date	Encumbrance	Budget Remaining	% Budget Expended
<u>2000 COLLECTION SYSTEM</u>									
2001	Main Line Sewer Repairs	75,320			75,320	10,669		64,651	14%
2002	Manhole Raising or Repairing	164,000			164,000	1,436		162,564	1%
2003	Lateral Replacement & Repairs	61,530			61,530	67,037	13,310	(18,817)	131%
2004	Cleanouts Installation/Repair	67,900			67,900	43,080		24,820	63%
2009	I&I Reduction Program	162,000	82,252		244,252	42,292	56,019	145,941	40%
2019	Basin L - I&I Reduction Project 1	600,060	480,281		1,080,341	369,770	824,773	(114,202)	111%
2021	Basin L - I&I Reduction Project 2	815,017			815,017	21,978	20,410	772,629	5%
2022	Browns Valley Rd & First St	200,000			200,000	219,979	691	(20,670)	110%
2023	Trancas Street Relining	-	-	200,000	200,000	-		200,000	-
<u>2500 COLLECTION SYSTEM - EQUIPMENT</u>									
2506	Bypass System	-	5,921		5,921	5,517		404	93%
2511	Ford F550	-	19,441		19,441	19,324		117	99%
<u>2800 LIFT STATIONS</u>									
2806	West Napa Odor Control	-	119,107		119,107	12,876	8,857	97,374	18%
2807	West Napa VFD Replacment	-	7,400		7,400	4,696		2,704	63%
<u>3000 TREATMENT</u>									
3008	FOG Receiving Station	440,000	73,292	290,000	803,292	495,589	315,028	(7,326)	101%
3009	Pond Aeration	122,500			122,500	-		122,500	-
3010	Phase I Recycled Water Expansion	391,667			391,667	393,764	45,072	(47,169)	112%
<u>3500 TREATMENT - EQUIPMENT</u>									
3509	Residual Analyzers (Deox) Replacements	30,000			30,000	21,925		8,075	73%
3520	Plant Security Cameras (3)	-	9,682		9,682	8,679		1,003	90%
3523	Portable Pump Replacement	-	56,989		56,989	56,465		524	99%
3524	Ford F550	-	18,497		18,497	18,384		113	99%
3526	Digester Hot Water Pumps (3)	11,000			11,000	2,517	259	8,224	25%
3527	DAFT Overflow Pumps (2)	10,000			10,000	-		10,000	-
3528	Oven Replacements	5,000			5,000	-		5,000	-
3529	Laboratory Information Management System	91,000			91,000	64,038	41,240	(14,279)	116%
3530	Sample Refrigerator	9,500			9,500	5,804		3,696	61%
3531	Automated BOD Analyzer	43,000			43,000	-		43,000	-
3532	Acid Dishwasher	10,000			10,000	-		10,000	-
3533	Dual Fuel Boiler Burner	75,000			75,000	4,058		70,942	5%
3534	Man Lift for Plant	10,000			10,000	-		10,000	-
3535	Compressed Air Dryer	5,000			5,000	9,930		(4,930)	199%
3536	Energy Management System	40,000			40,000	5,820	78	34,102	15%
3537	Ammonia Analyzer	62,500			62,500	-		62,500	-
3538	H Pad Actuator and Programming	30,000			30,000	-		30,000	-
3539	Pond 4 PS Service Water	75,000			75,000	-		75,000	-
3540	Spare Digester Mixer	118,333			118,333	-		118,333	-
3541	Activated Sludge Diffuser Replacement	95,556			95,556	-		95,556	-
3542	Tertiary Treatment Improvements	75,556			75,556	-		75,556	-

**Summary of NSD Capital Project Status
through 5/31/12**

Proj #	Description	Original Budget	FY 10-11 Carryovers	Adj.	Final Budget	Costs Paid to Date	Encumbrance	Budget Remaining	% Budget Expended
3543	Digester Recirc Pumps	22,500			22,500	16,274	100	6,126	73%
3544	Secondary PS Pump Rebuild (3)	35,000			35,000	-		35,000	-
3545	Electric Cart #1	7,000			7,000	9,243		(2,243)	132%
3546	Electric Cart #2	7,000			7,000	9,243		(2,243)	132%
3547	Electric Cart #3	7,000			7,000	9,243		(2,243)	132%
3548	Positive Displacement Pump	-		14,000	14,000	13,260		740	95%
3549	Ford F250 Diesel	-		50,000	50,000	34,882		15,118	70%
3550	Catalytic Converter for Vehicle #513	-		18,000	18,000	17,416		584	97%
<u>4000 TREATMENT - STRUCTURES</u>									
4006	Influent PS Bypass Piping	-	200,000	(18,000)	182,000	-		182,000	-
4007	Pond Transfer Structure Pond 1 to 2		18,500		18,500	79		18,421	0%
4010	WWTP Paving	8,471			8,471	31,075		(22,604)	367%
4011	Flocculating Clarifier Weirs	117,000			117,000	-		117,000	-
4012	IPS Expansion	140,369			140,369	139,235	86,076	(84,943)	161%
<u>4500 SCADA</u>									
4501	SCADA Upgrades - Phase 3	-	7,500		7,500	2,268		5,232	30%
4503	SCADA MP Phase 4	296,501	751,125		1,047,626	195,852	1	851,773	19%
<u>5000 RECYCLING - DISTRICT</u>									
5005	Jameson Pump Station Rehab	-	49,526		49,526	47,845		1,681	97%
5010	Ford Ranger 4x4 (Veh #164)	26,000			26,000	-		26,000	-
5011	Pull Flail Chopper Replacements	25,000			25,000	-		25,000	-
5012	Recycled Water Jockey Pump	38,222			38,222	-		38,222	-
5013	Bulk Spreader	50,000			50,000	-		50,000	-
5014	Jameson Sprinkler Replacement - Field A	80,000			80,000	-		80,000	-
<u>5500 RECYCLING - EXPANSION</u>									
5501	North Bay Waste Reuse Project	346,336			346,336	258,664		87,672	75%
5506	NSH Pipeline	(600,000)	3,322,000		2,722,000	2,160,634	911,989	(350,623)	113%
5507	MST Pipeline	550,000			550,000	295,865	36,756	217,379	60%
<u>6000 OTHER</u>									
6003	Development Technical Support	195,930			195,930	169,847		26,083	87%
6004	District Office and Corp Yard	2,800,000		(1,800,000)	1,000,000	485,325	58,720	455,955	54%
<u>6500 OTHER - EQUIPMENT</u>									
6504	Ford F150 4x4 (Const Inspctr)	-			-	30,508		(30,508)	-
		\$8,048,768	\$5,221,513	(\$1,246,000)	\$12,024,281	\$5,832,386	\$2,419,379	\$3,772,514	69%