







# NAPA COUNTY LAND USE PLAN 2008 - 2030





## LEGEND

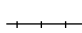



### URBANIZED OR NON-AGRICULTURAL

-  Cities
-  Urban Residential \*
-  Rural Residential \*
-  Industrial
-  Public-Institutional
-  Study Area

### OPEN SPACE

-  Agriculture, Watershed & Open Space
-  Agricultural Resource

### TRANSPORTATION

-  Mineral Resource
-  Railroad
-  Limited Access Highway
-  Major Road
-  Secondary Road
-  Airport
-  Airport Clear Zone
-  Landfill - General Plan

\* See Action Item AG/LU-114.1 regarding agriculturally zoned areas within these land use designations

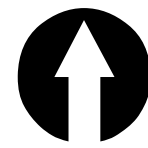
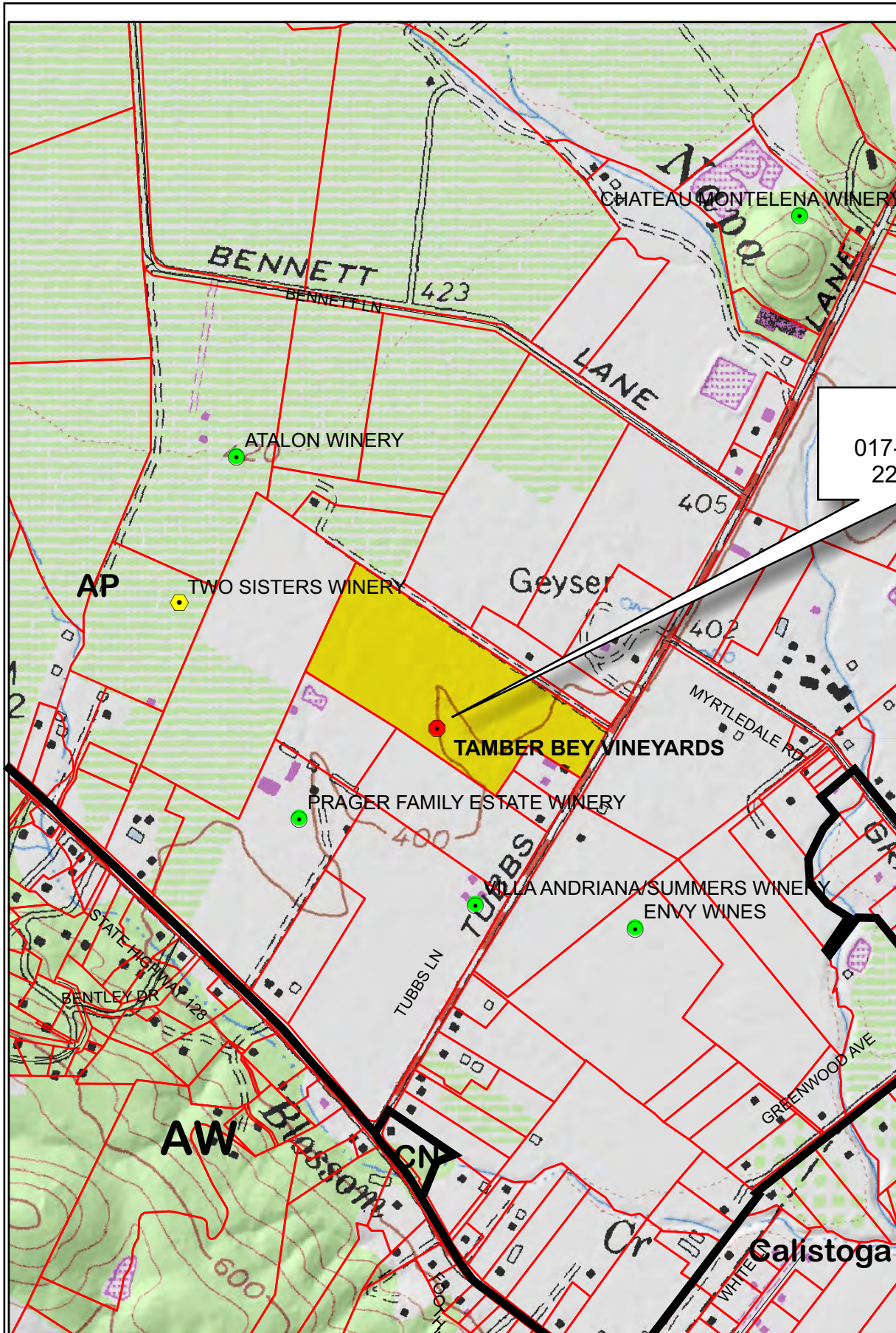
APN  
017-160-010  
03-12-2013  
11A UP

SCALE IN MILES  
0 2





# TAMBER BEY VINEYARDS



## Legend

### Wineries in Vicinity

- Producing
- Approved
- Pending
- Zoning
- Parcels

0 400 800 1,600 2,400 3,200 Feet

03-12-2013

11A

UP

Napa County Conservation  
Development and Planning Department

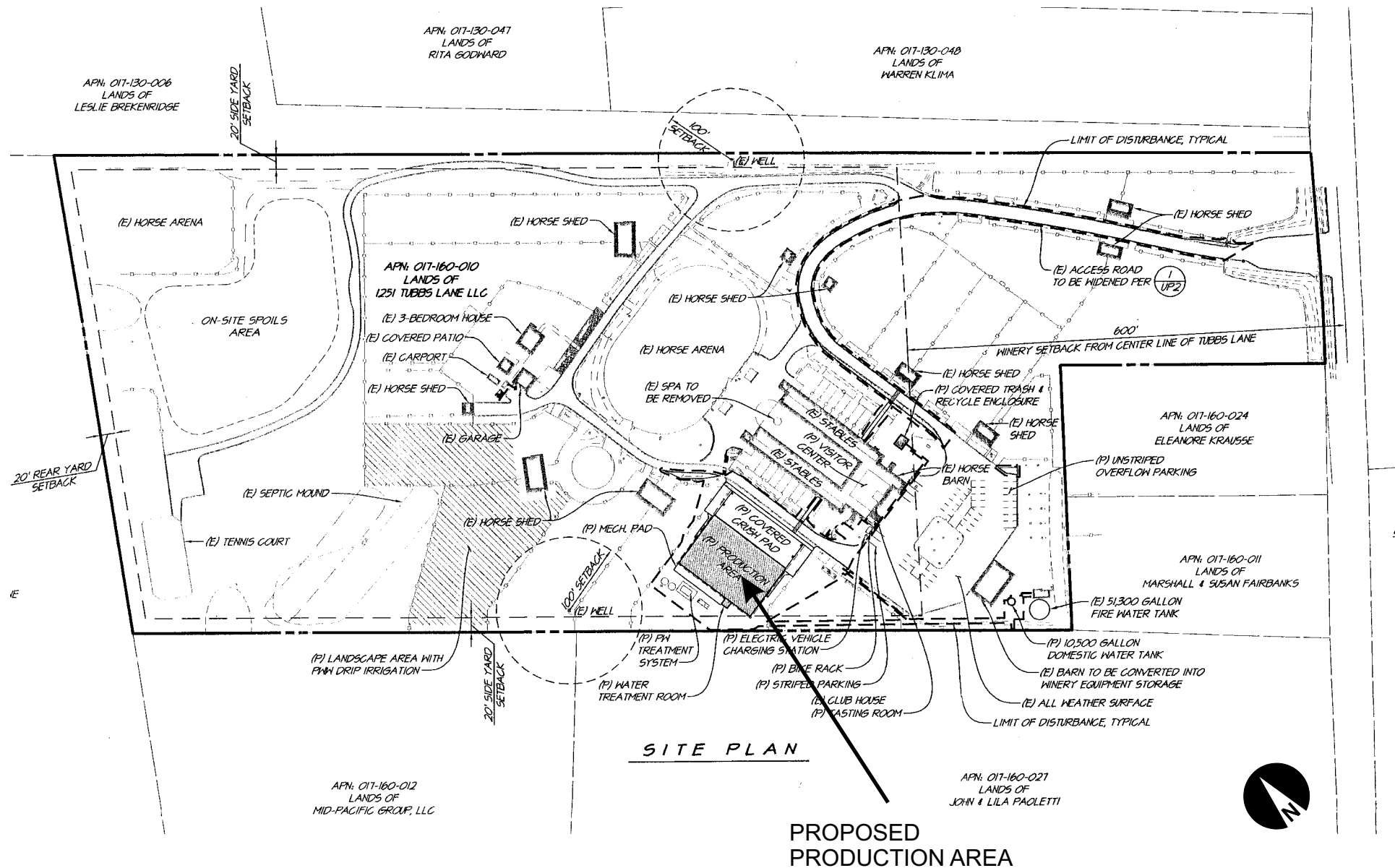
TamberBeyVineyards\_up1.cdr



# TAMBER BEY VINEYARDS



# TAMBER BEY VINEYARDS



# SITE PLAN

**EARTHWORK ESTIMATES**


LOCATION/ITEMS	CUT (CY)	FILL (CY)
DRIVEWAY	120	70 (IMPORT)
SHALE FILL		70
CRUSH PAD	2000	1430 (IMPORT)
PRODUCTION AREA		
ELDS	2000	1510
TOTAL	2000	1510
SPILLS		2060

SPILLS TO BE PLACED ON-SITE IN AREA SHOWN ON UPLD. AVERAGE DEPTH OF FILL = 1 FOOT

**GRAPHIC SCALE**

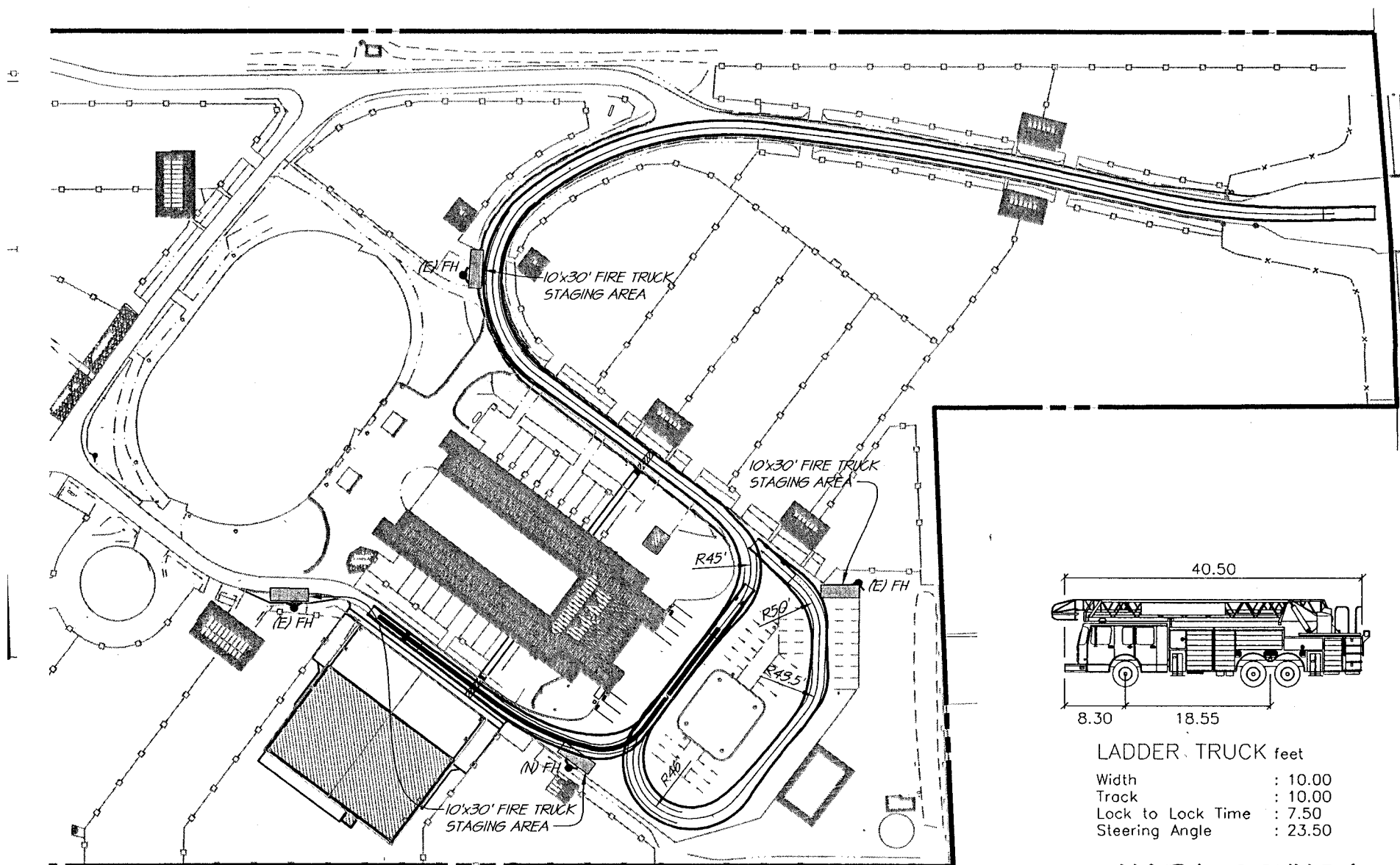
0 40 80

**GRADING & LAYOUT PLAN**

03-12-2013	11A	UP	 Napa County Conservation Development and Planning Department	TamberBeyVineyards_up1.cdr
------------	-----	----	---	----------------------------

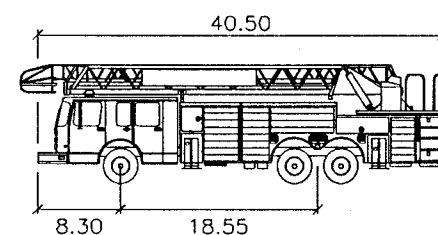


# TAMBER BEY VINEYARDS



② FIRE TRUCK ROUTE

③ NAPA COUNTY LADDER TRUCK  
NO SCALE

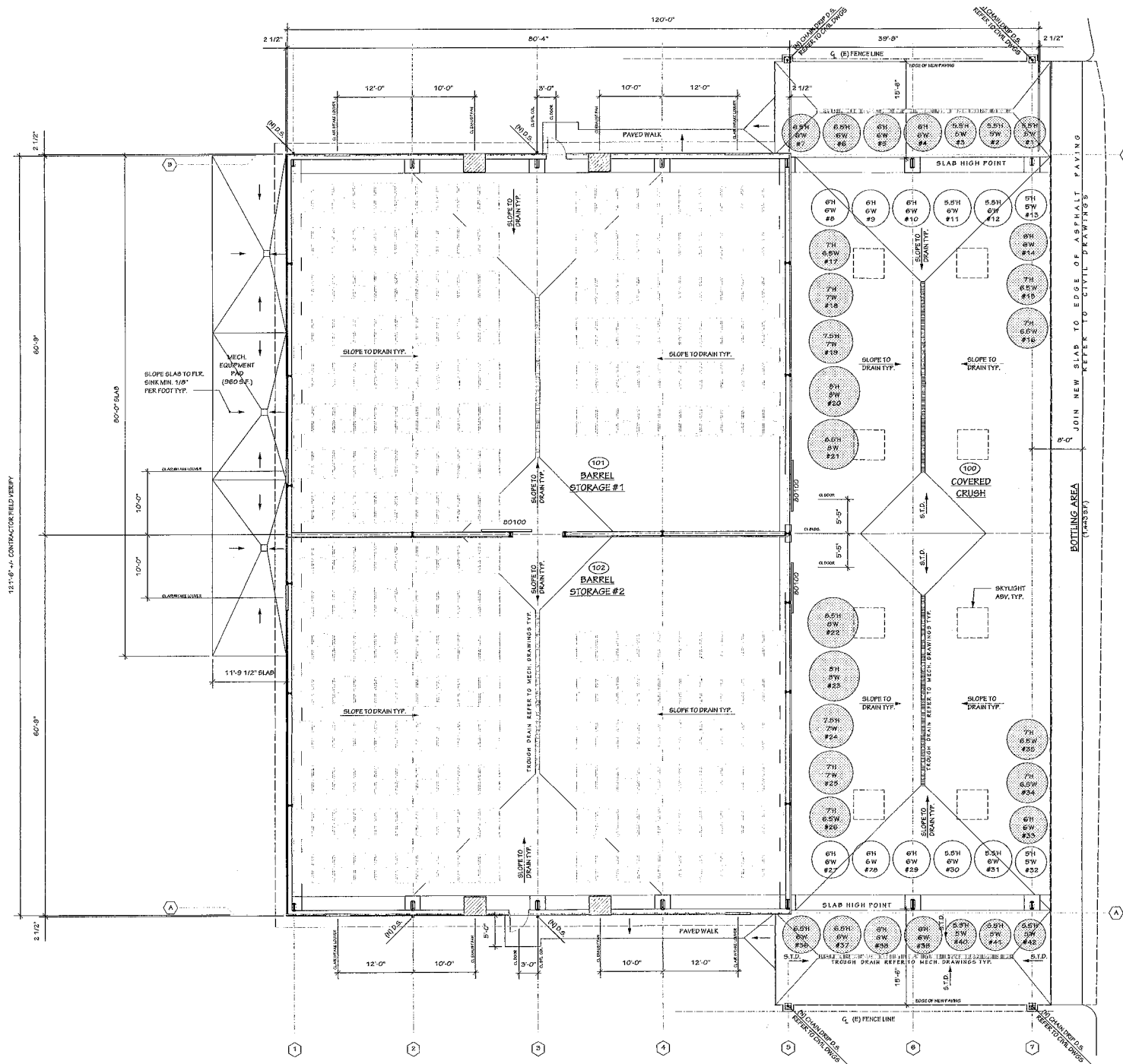


LADDER TRUCK feet

Width	: 10.00
Track	: 10.00
Lock to Lock Time	: 7.50
Steering Angle	: 23.50

[illegible]

# TAMBER BEY VINEYARDS



## AREA TABULATION

BARREL STORAGE	9,812 S.F.
COVERED CRUSH	5,978 S.F.
TOTAL AREA UNDER ROOF	15,790 S.F.

## PRODUCTION AREA TOTALS

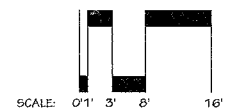
BUILDING	15,790 S.F.
BOTTLING AREA	1,443 S.F.
WINERY EQUIPMENT STORAGE	
(REFER TO SITE PLAN FOR LOCATION)	1,925 S.F.
MISC. (REFER TO TASTING CLUB PLANS)	346 S.F.
TOTAL PRODUCTION AREA	19,382 S.F.

## PRODUCTION AREA



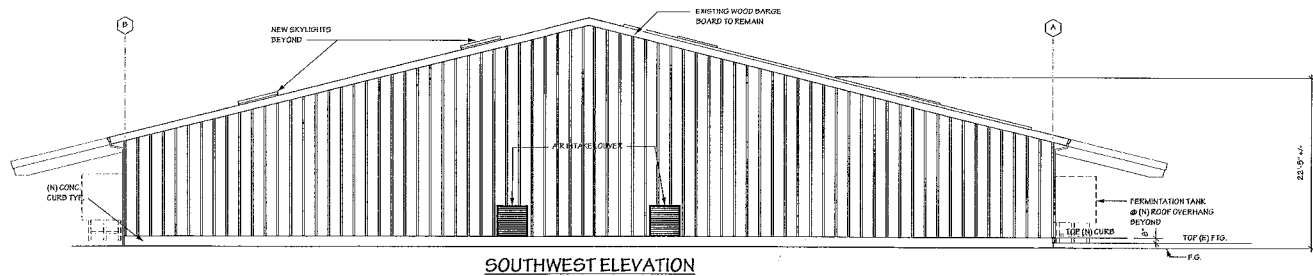
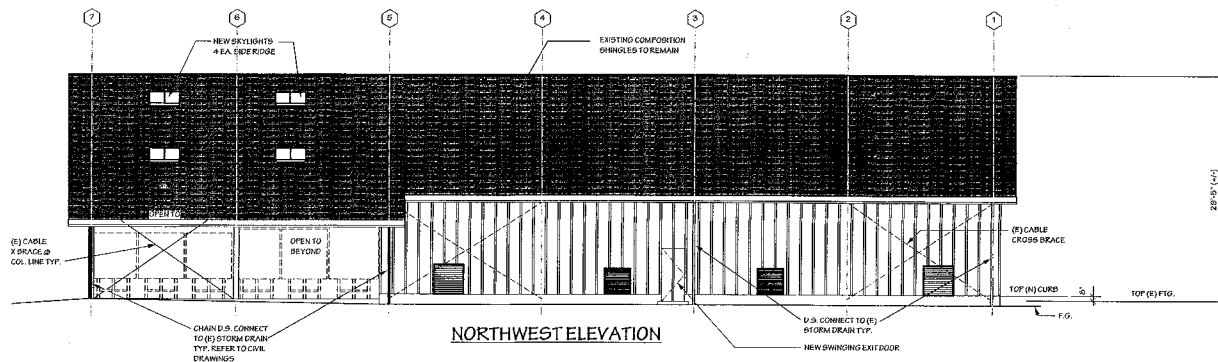
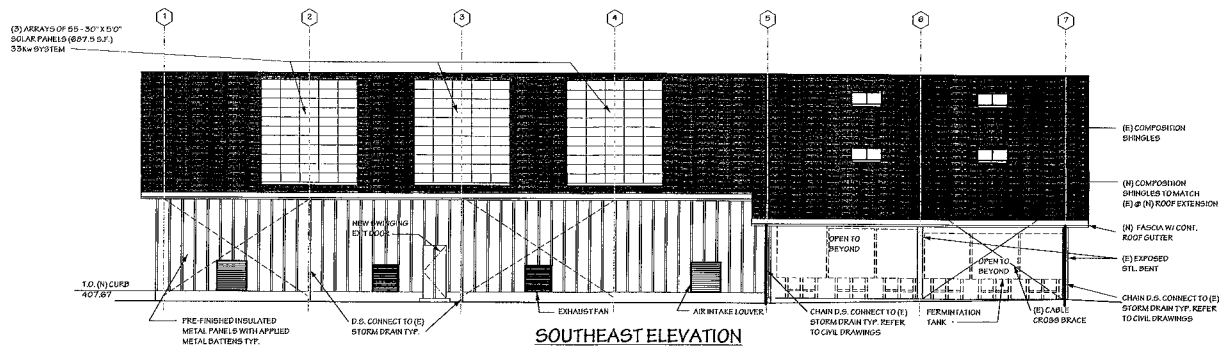
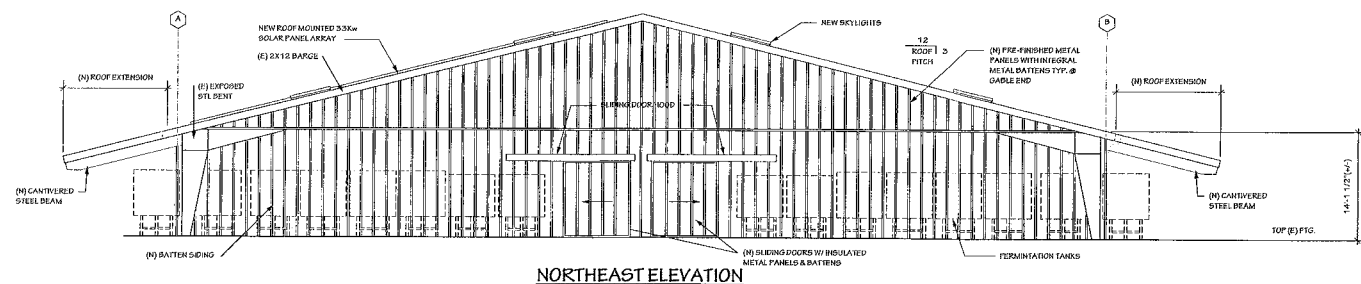
## FLOOR PLAN

REVISED JAN. 7, 2013  
REVISED AUG. 15, 2012  
JULY 12, 2012

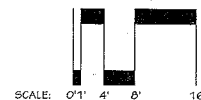




# TAMBER BEY VINEYARDS

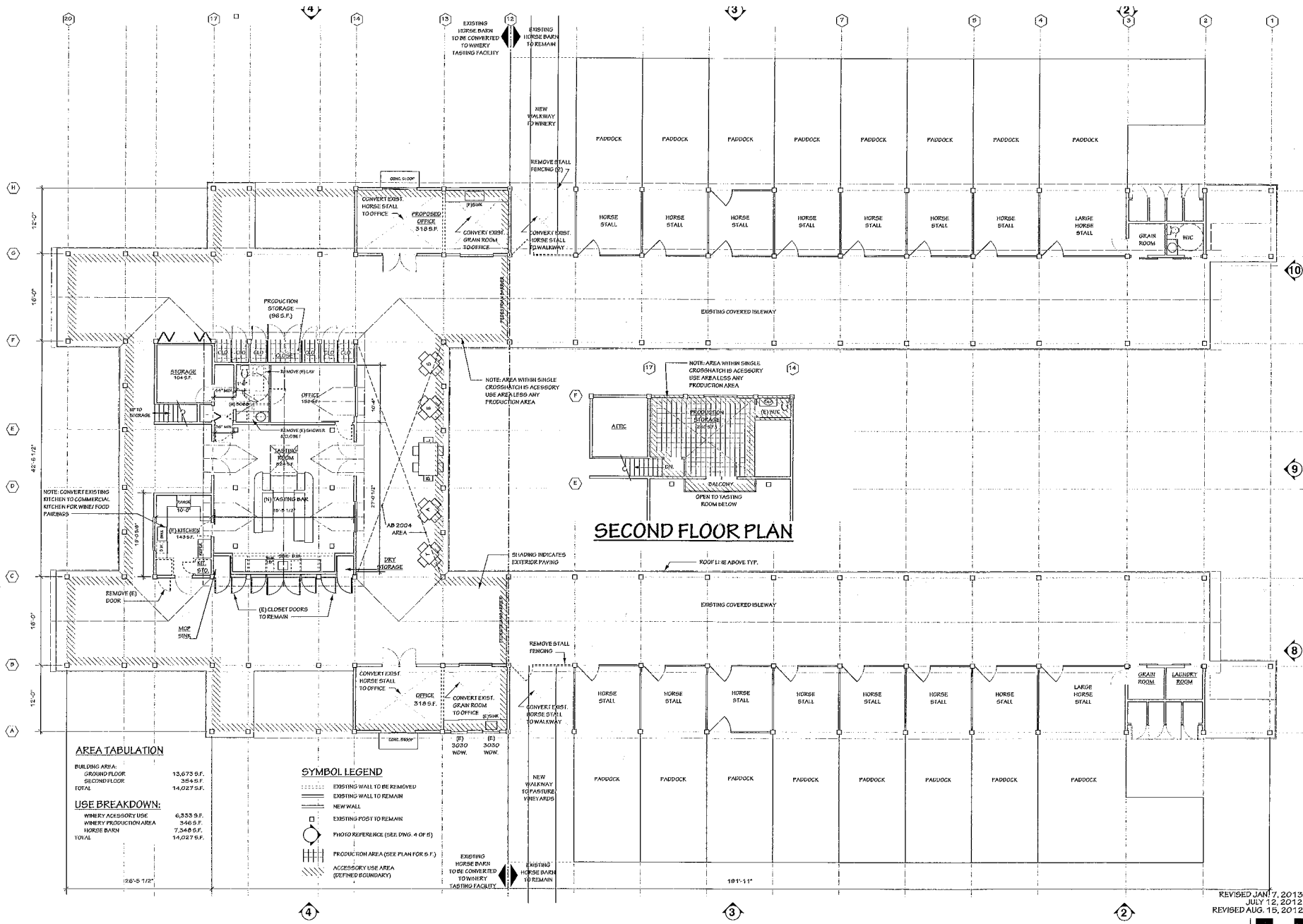


REVISED JAN. 7, 2013  
JULY 12, 2012

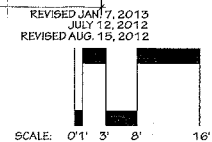


PRODUCTION  
AREA

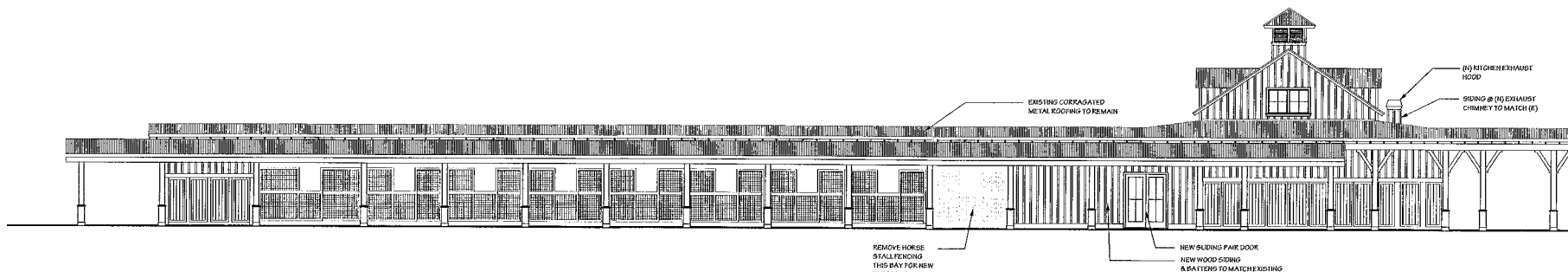
# TAMBER BEY VINEYARDS



## VISITOR CENTER

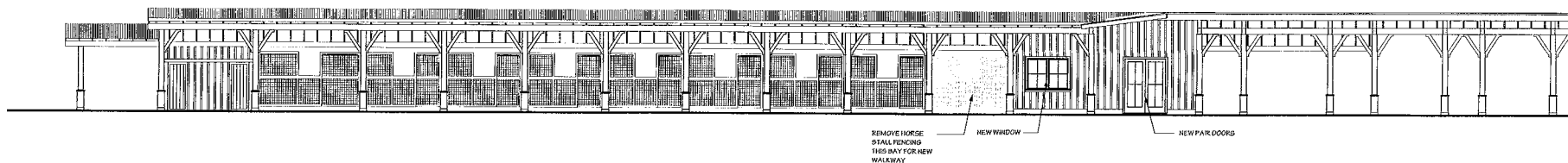


# TAMBER BEY VINEYARDS



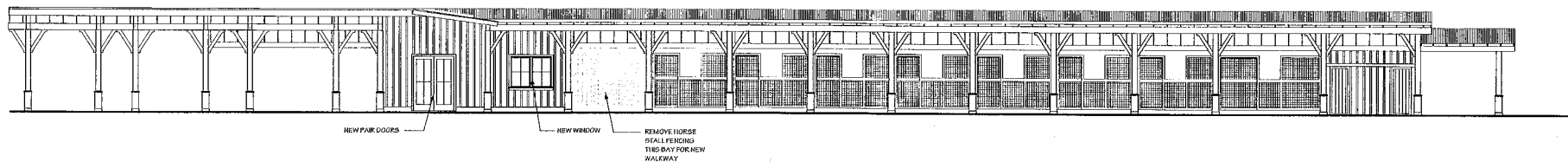
**SOUTHWEST ELEVATION**

REVISIONS TO EXISTING INDICATED



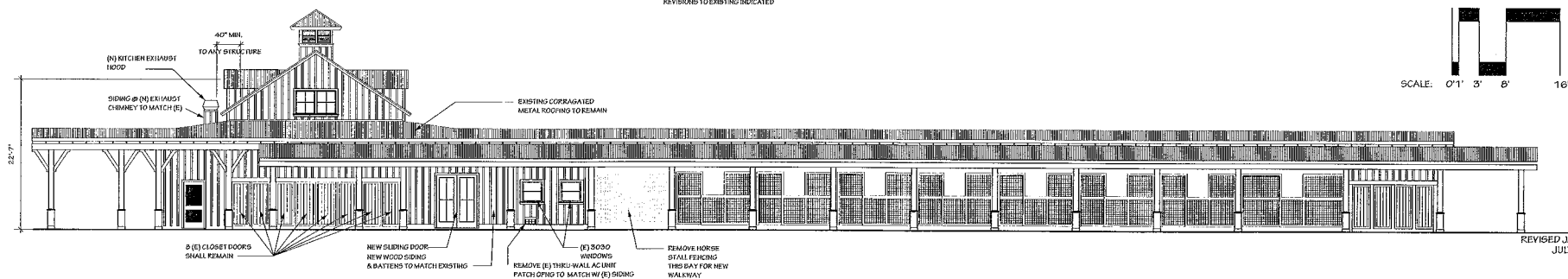
**SOUTHWEST ELEVATION (OF NORTHEAST WING)**

REVISIONS TO EXISTING INDICATED



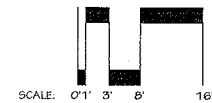
**NORTHEAST ELEVATION (OF SOUTHWEST WING)**

REVISIONS TO EXISTING INDICATED



**NORTHEAST ELEVATION**

REVISIONS TO EXISTING INDICATED



REVISED JAN. 7, 2013  
JULY 12, 2012

## VISITOR CENTER