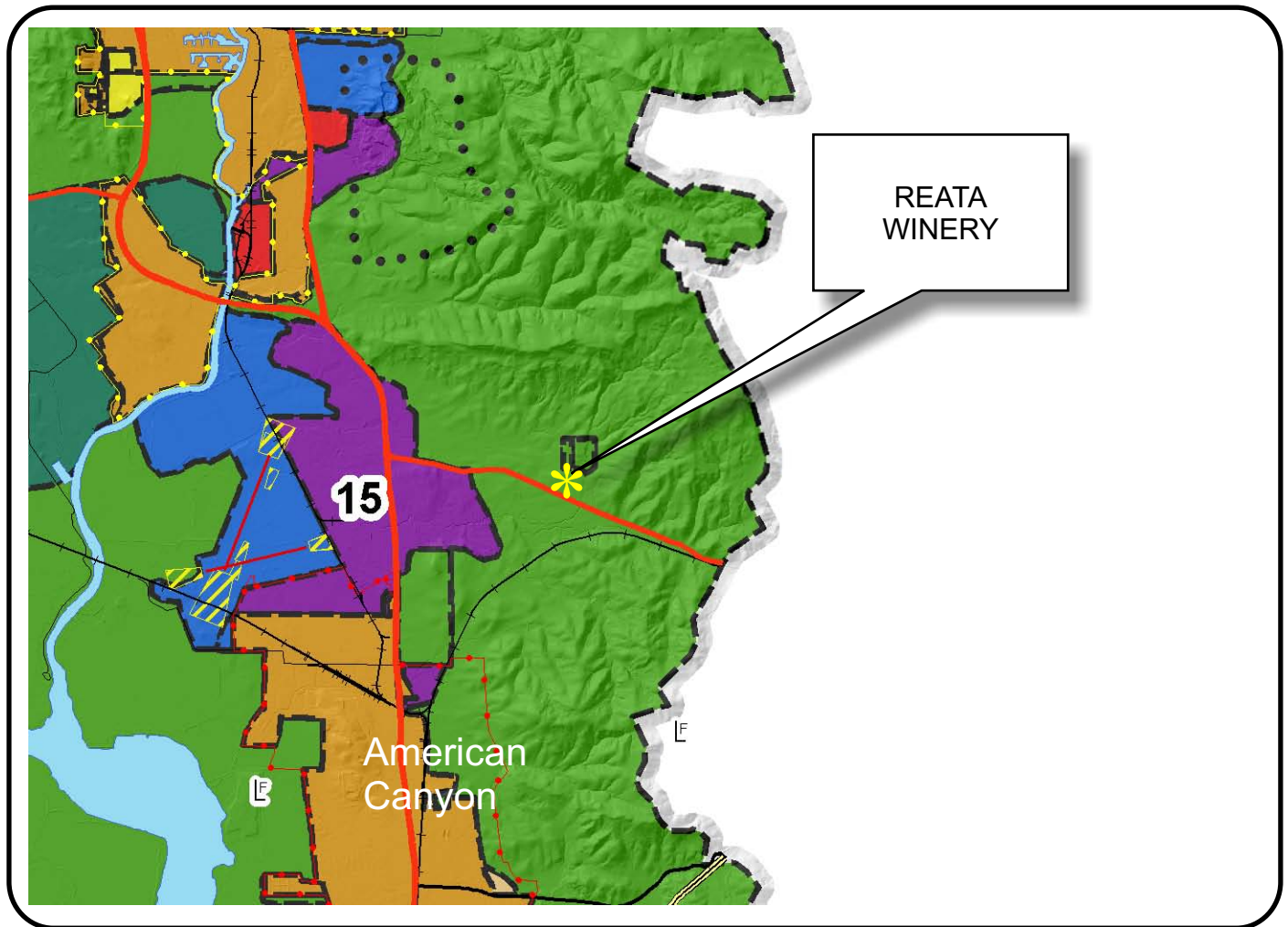


NAPA COUNTY LAND USE PLAN 2008 - 2030



LEGEND

URBANIZED OR NON-AGRICULTURAL

- Cities
- Urban Residential *
- Rural Residential *
- Industrial
- Public-Institutional
- Study Area

OPEN SPACE

- Agriculture, Watershed & Open Space
- Agricultural Resource

TRANSPORTATION

- Mineral Resource
- Railroad
- Limited Access Highway
- Major Road
- Secondary Road
- Airport
- Airport Clear Zone
- Landfill - General Plan

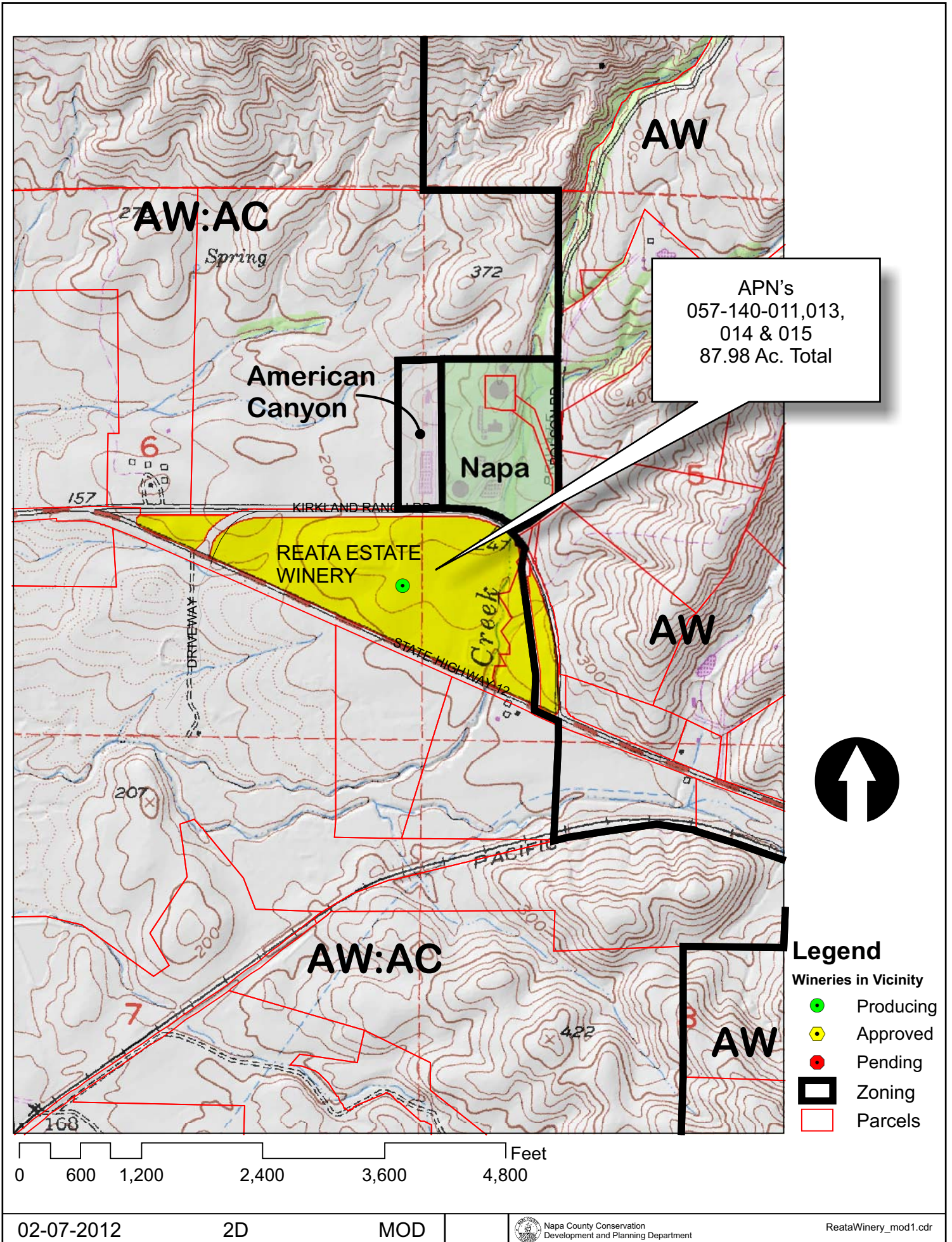
* See Action Item AG/LU-114.1 regarding agriculturally zoned areas within these land use designations

APN
057-140-015
02-07-2012
2D MOD

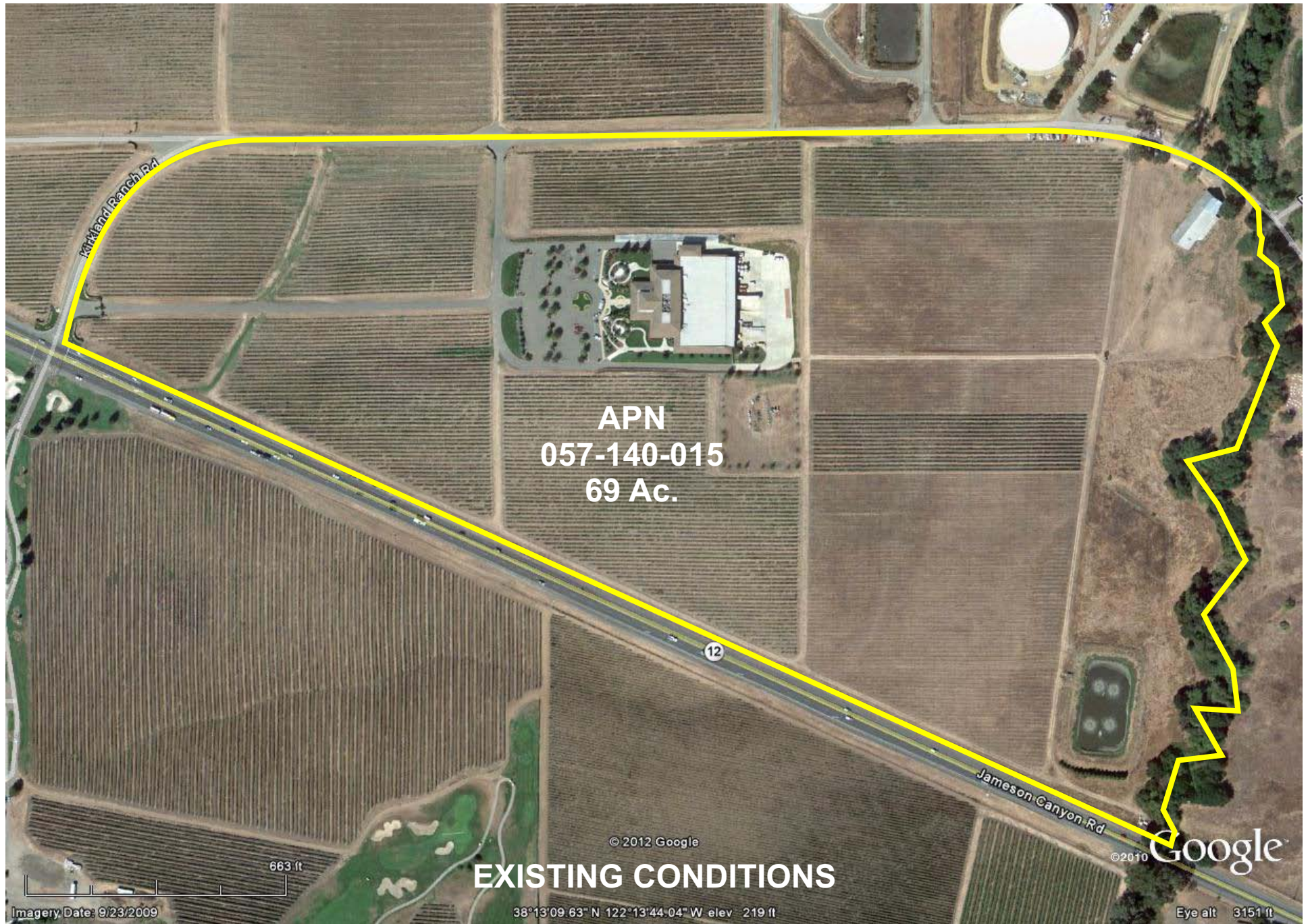
SCALE IN MILES
0 2



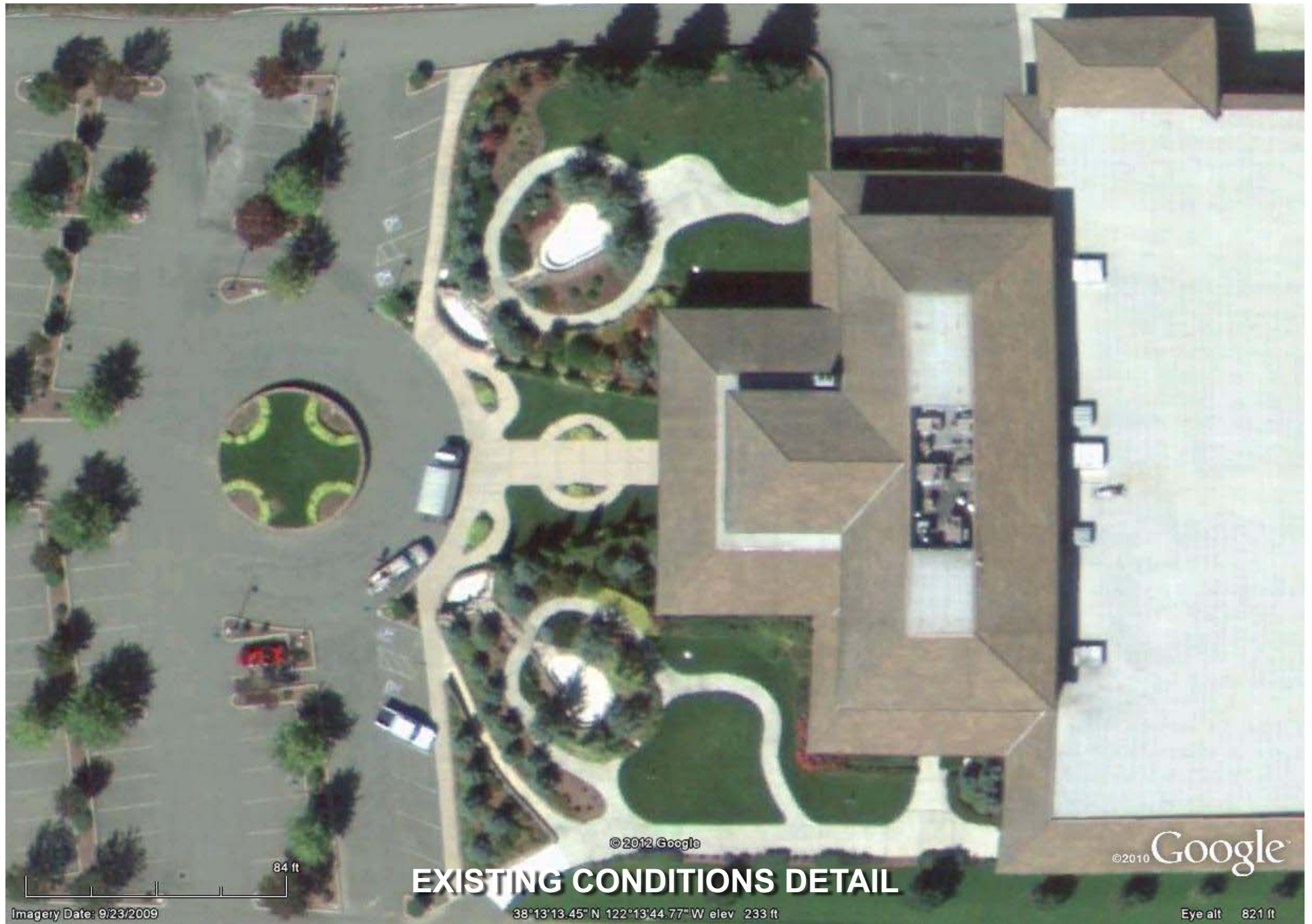
REATA WINERY



REATA WINERY



REATA WINERY



REATA WINERY

Modifications Per P11-00288 & 2nd floor changes

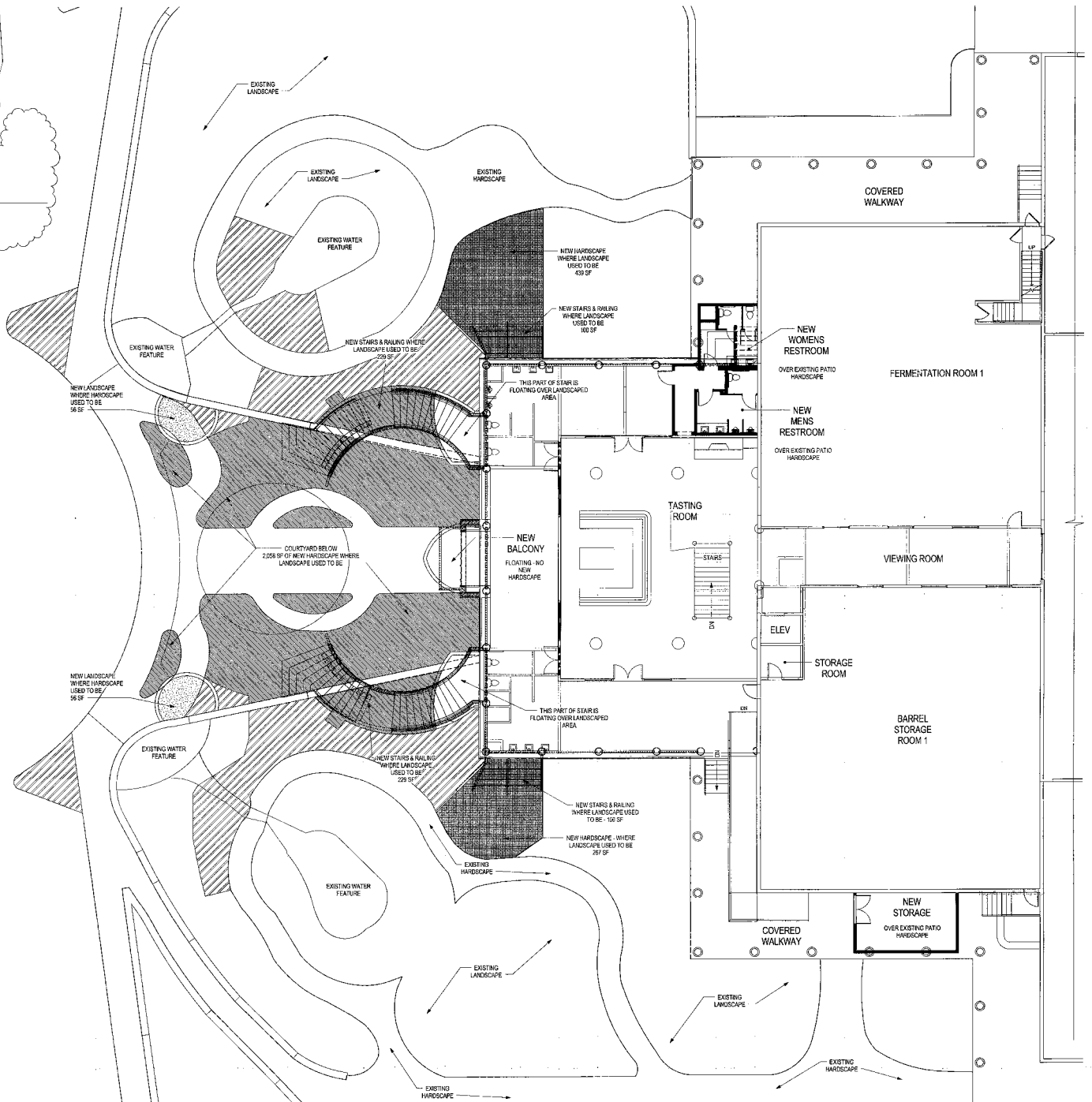
UNLESS NOTED OTHERWISE,
ALL AREAS (LANDSCAPE AND HARDSCAPE)
ARE EXISTING

	LOWER LEVEL NEW HARDSCAPE AREAS AND STAIRS	2,516 SF
	UPPER LEVEL NEW HARDSCAPE AREAS	906 SF
	LOWER LEVEL NEW LANDSCAPE AREAS	112 SF
	LOWER & UPPER LEVEL REHAB AREAS	1,959 SF

AREAS OF
LANDSCAPE
REHAB WERE
REMOVED FROM
SCOPE DUE TO
COST

AREA EITHER NEW
LANDSCAPE OR REHAB
LANDSCAPE

1

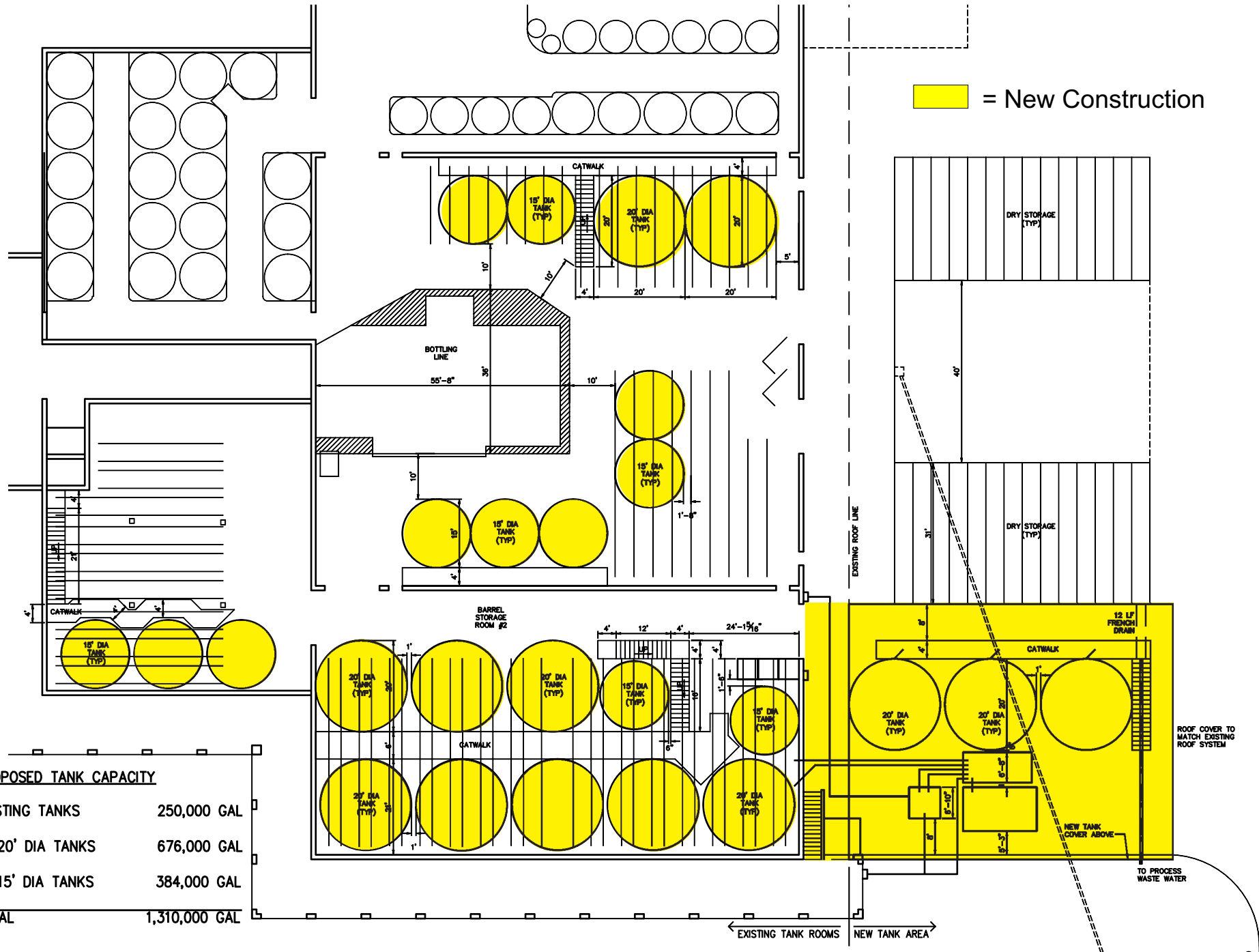


REATA WINERY

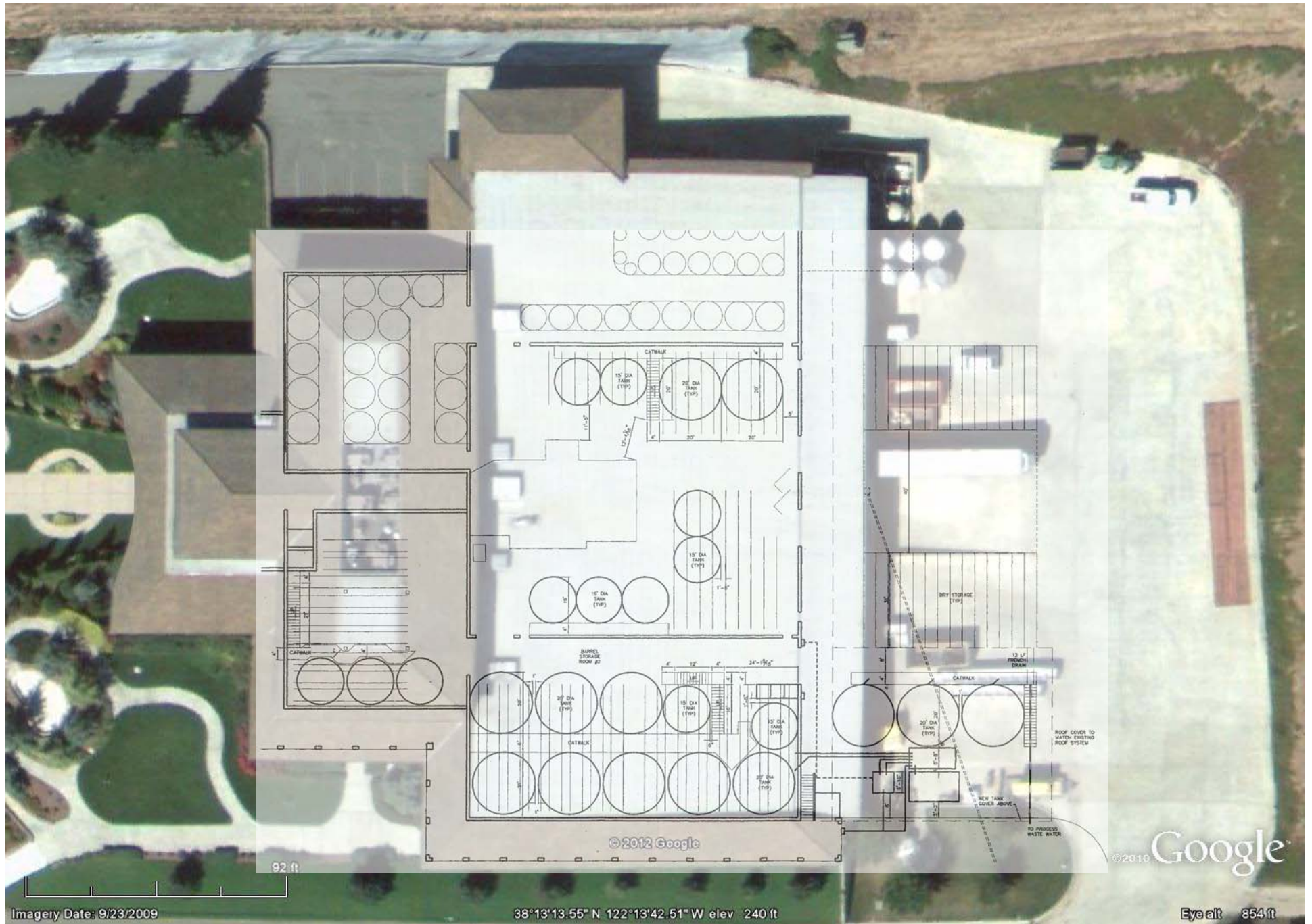
= New Construction

PROPOSED TANK CAPACITY

EXISTING TANKS	250,000 GAL
13 20' DIA TANKS	676,000 GAL
12 15' DIA TANKS	384,000 GAL
TOTAL	1,310,000 GAL



REATA WINERY



REATA WINERY

