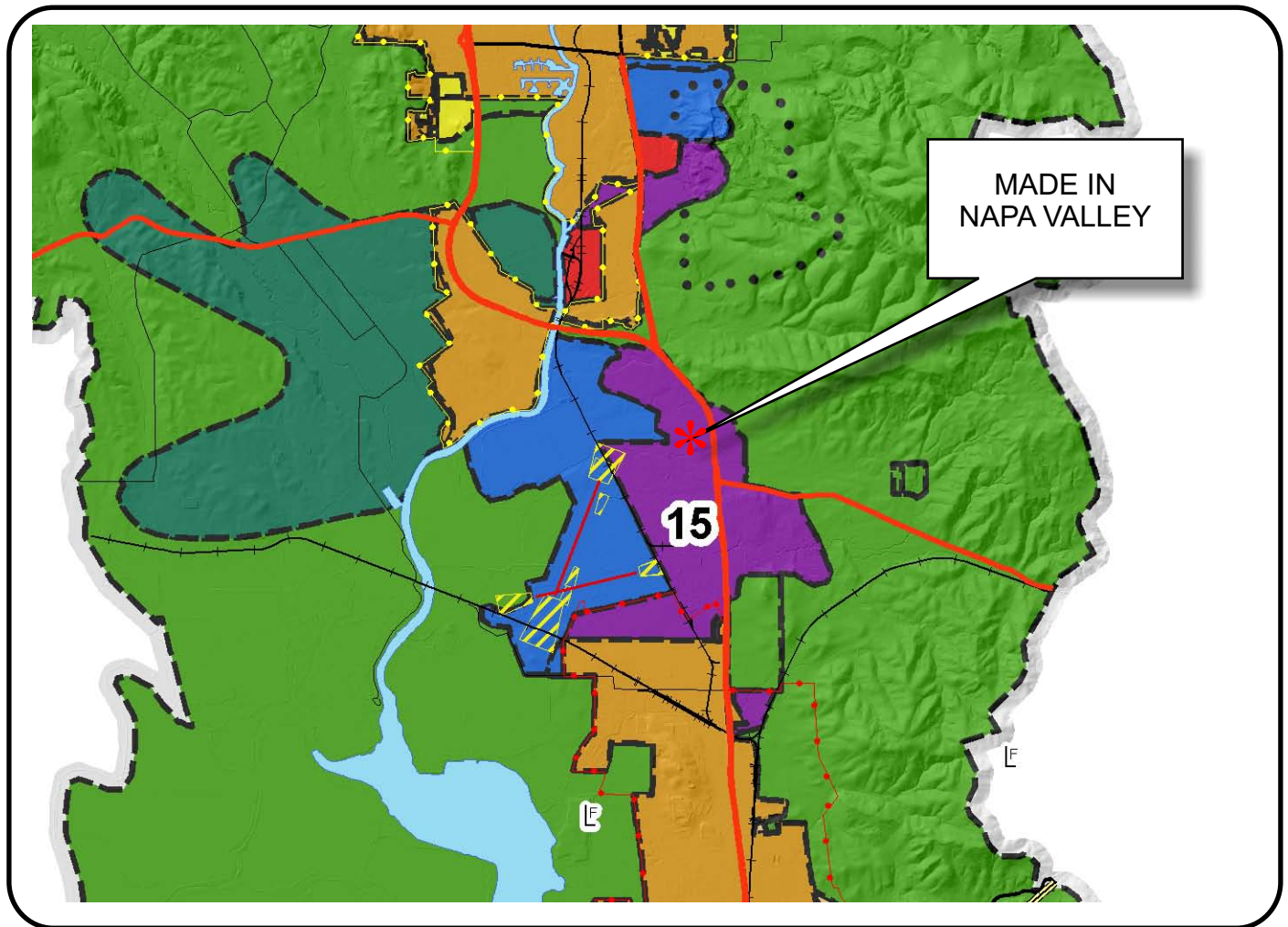


# NAPA COUNTY LAND USE PLAN 2008 - 2030



## LEGEND

### URBANIZED OR NON-AGRICULTURAL

- Cities
- Urban Residential \*
- Rural Residential \*
- Industrial
- Public-Institutional
- Study Area

### OPEN SPACE

- Agriculture, Watershed & Open Space
- Agricultural Resource

### TRANSPORTATION

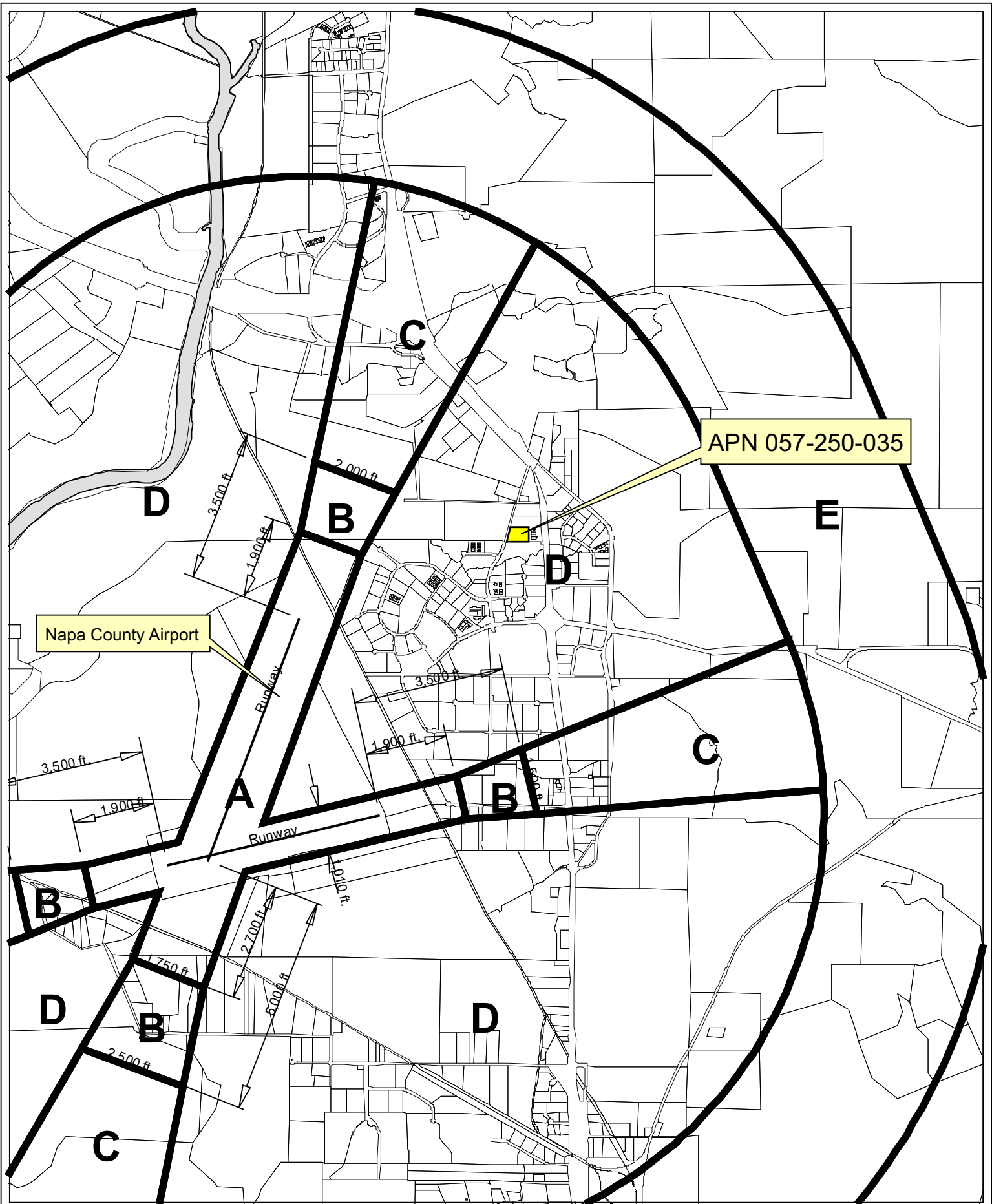
- Mineral Resource
- Railroad
- Limited Access Highway
- Major Road
- Secondary Road
- Airport
- Airport Clear Zone
- Landfill - General Plan

\* See Action Item AG/LU-114.1 regarding agriculturally zoned areas within these land use designations

APN  
057-250-007  
11-03-2011  
2C SP

SCALE IN MILES  
0 2





Horizontal Datum: NAD 83,  
CA State Plane Coordinates,  
Zone II, feet

Disclaimer: This map was prepared for informational  
purposes only. No liability is assumed for the accuracy  
of the data delineated hereon.



## Compatibility Plan

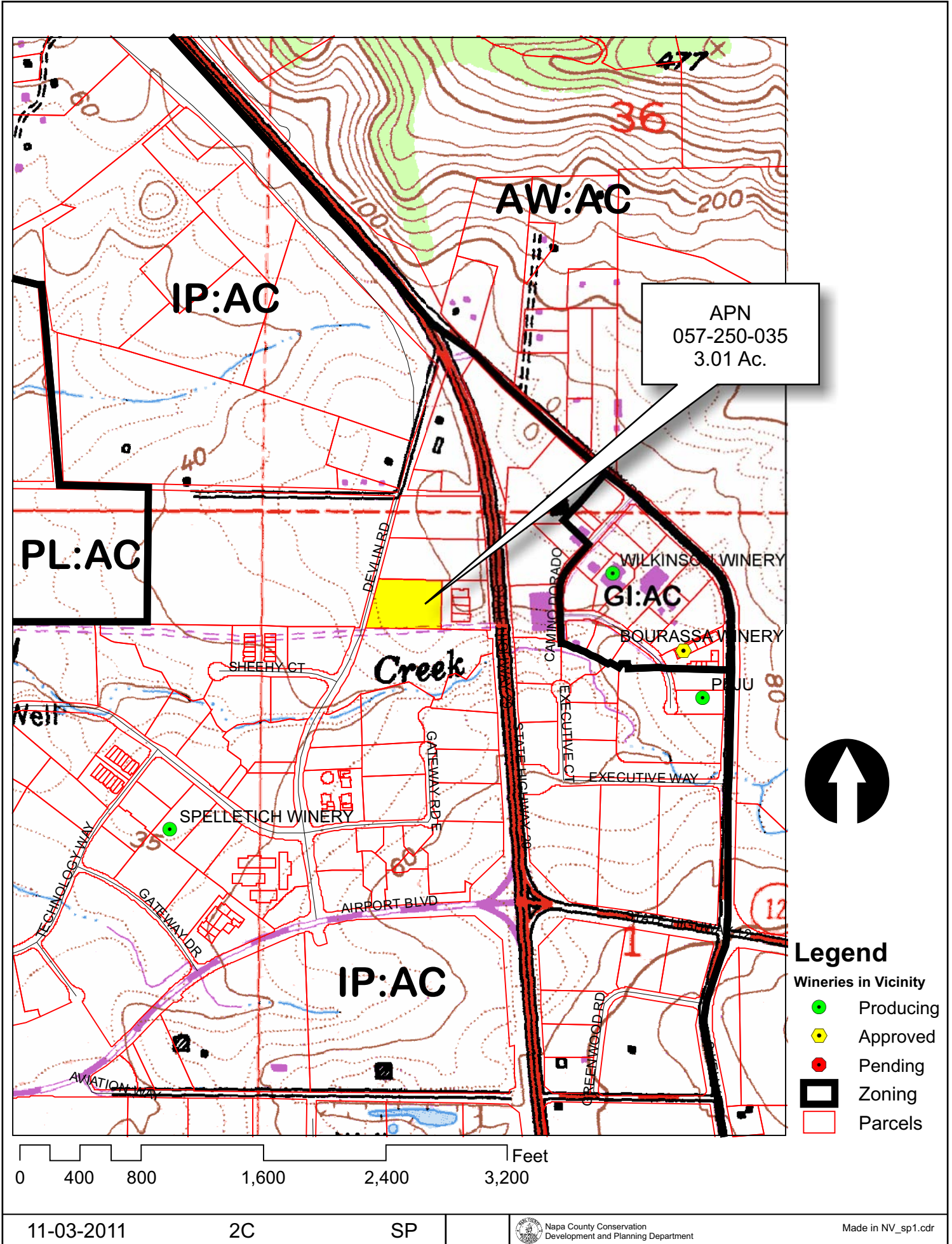
### Napa County Airport



0 750 1,500 3,000'

Napa County Conservation Division - 11/2011

# MADE IN NAPA VALLEY





# MADE IN NAPA VALLEY



CONDITIONS AS OF 09/23/2009

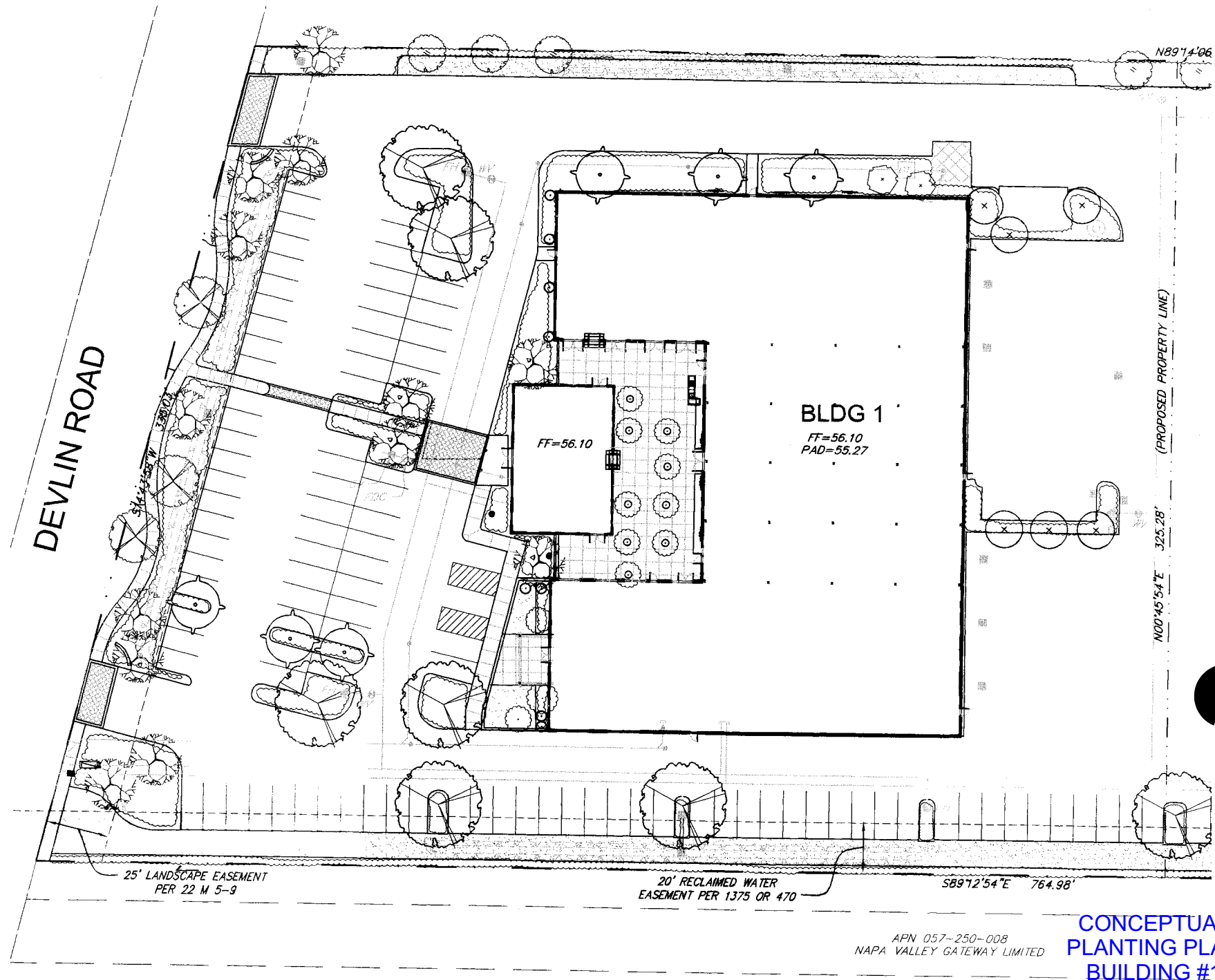
The site plan illustrates the layout of two commercial buildings, Building 1 and Building 2, situated on a large parcel. Building 1, located on the left, has a total area of 47,014 SF, including a 2nd floor office (5,526 SF), storage/mezzanine (9,802 SF), and a merchandise building (2,400 SF). Building 2, on the right, is 25,488 SF. The plan includes numerous easements such as a 40' pole gas pipeline easement, a 10' waterline easement, and a 25' Napa Sanitation District easement. It also shows parking areas, a merchandise showroom, and various utility lines. Dimensions for setbacks and easements are provided throughout the plan.

**BUILDING 1**  
47,014 SF  
(2nd FLR OFFICE 5,526 SF /  
STOR. MEZZ. 9,802 SF /  
MERCHANDISE BLDG. 2,400'SF)

**BUILDING 2**  
25,488 SF

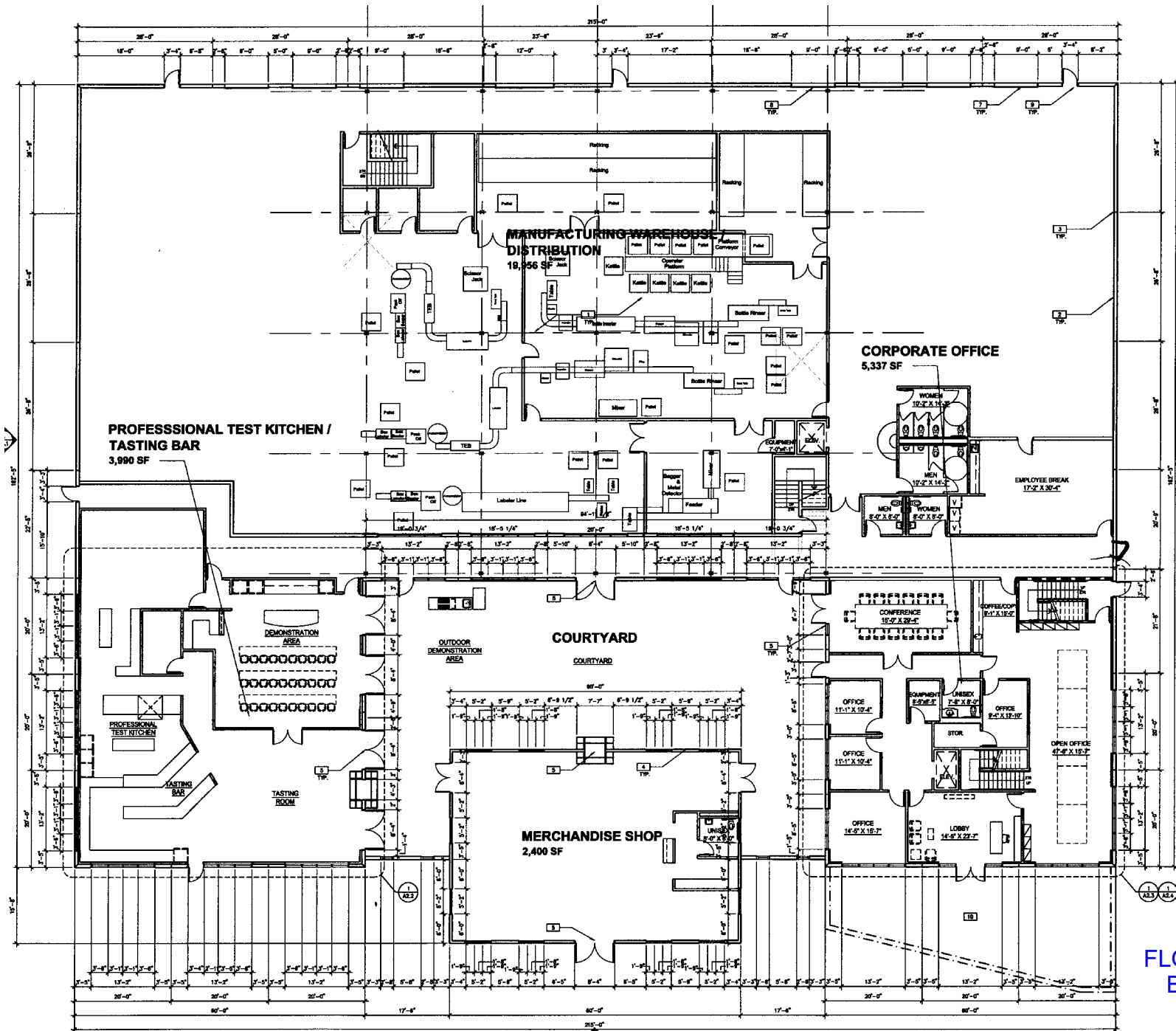
**SITE PLAN**  
SCALE: 1"=30'-0"

# MADE IN NAPA VALLEY



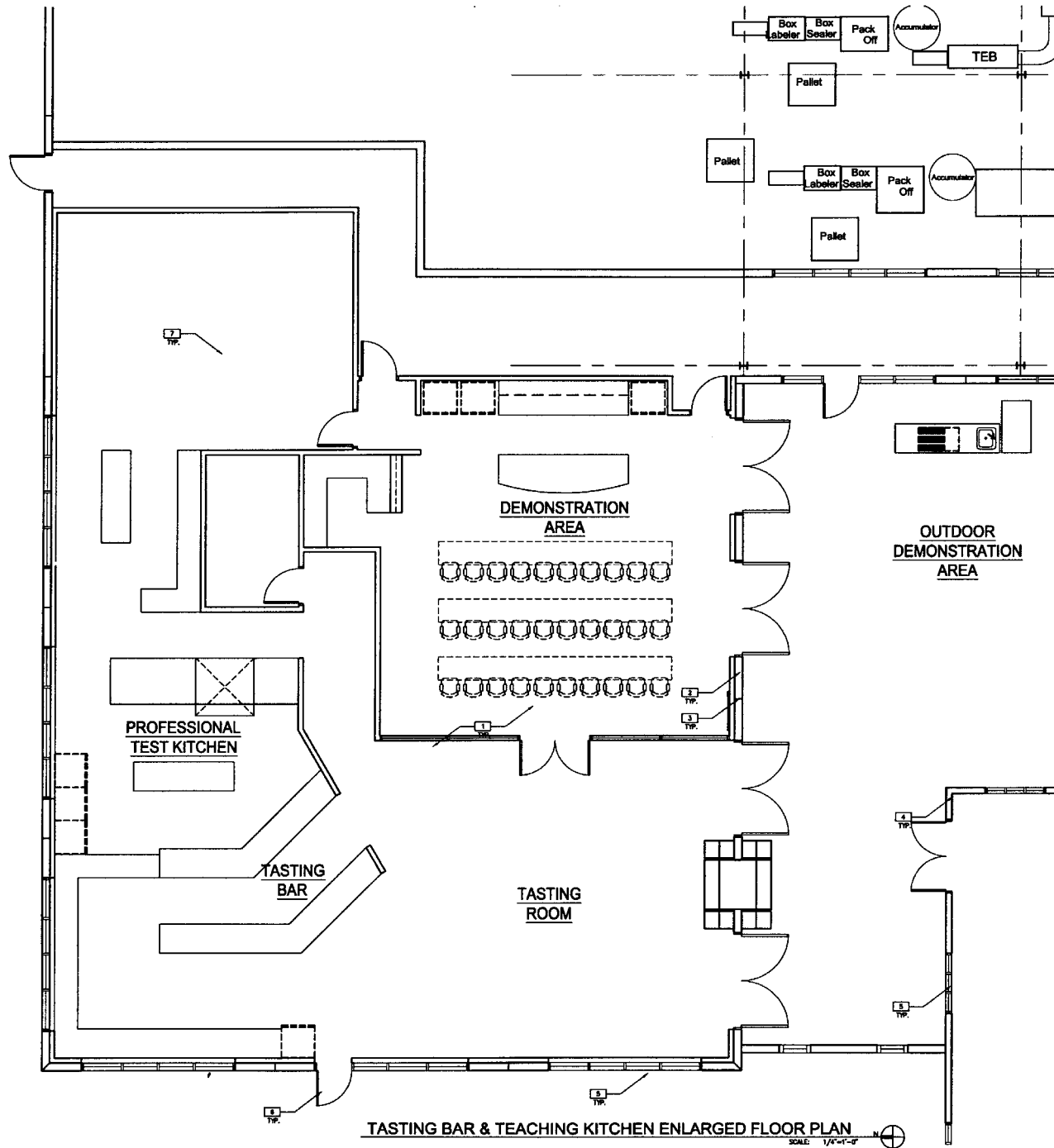


**MADE IN NAPA VALLEY**



# FLOOR PLAN BLDG. #1

# MADE IN NAPA VALLEY



BLDG. #1