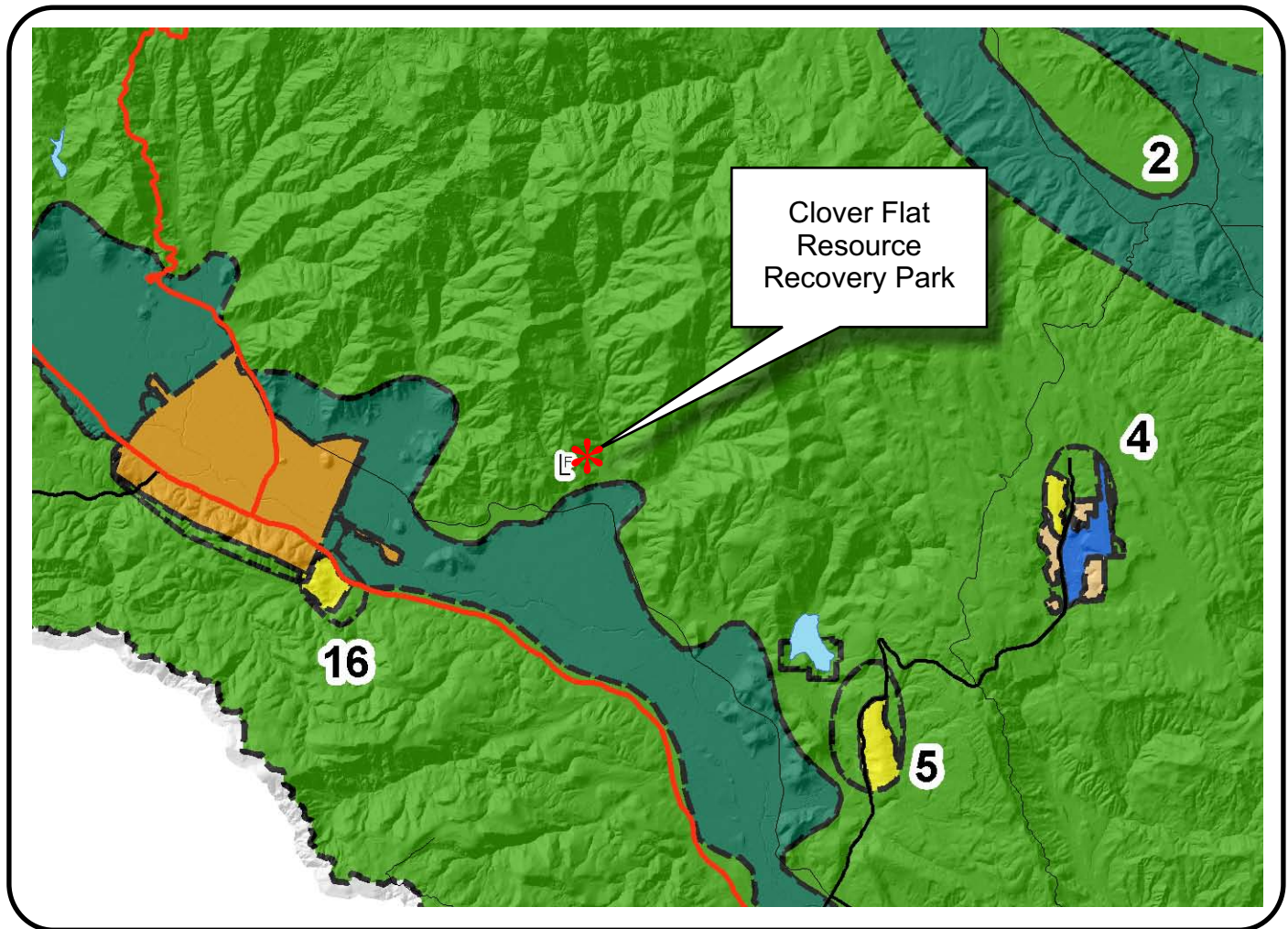


# NAPA COUNTY LAND USE PLAN 2008 - 2030



## LEGEND

### URBANIZED OR NON-AGRICULTURAL

- Cities
- Urban Residential \*
- Rural Residential \*
- Industrial
- Public-Institutional
- Study Area

### OPEN SPACE

- Agriculture, Watershed & Open Space
- Agricultural Resource

### TRANSPORTATION

- Mineral Resource
- Railroad
- Limited Access Highway
- Major Road
- Secondary Road
- Airport
- Airport Clear Zone
- Landfill - General Plan

\* See Action Item AG/LU-114.1 regarding agriculturally zoned areas within these land use designations

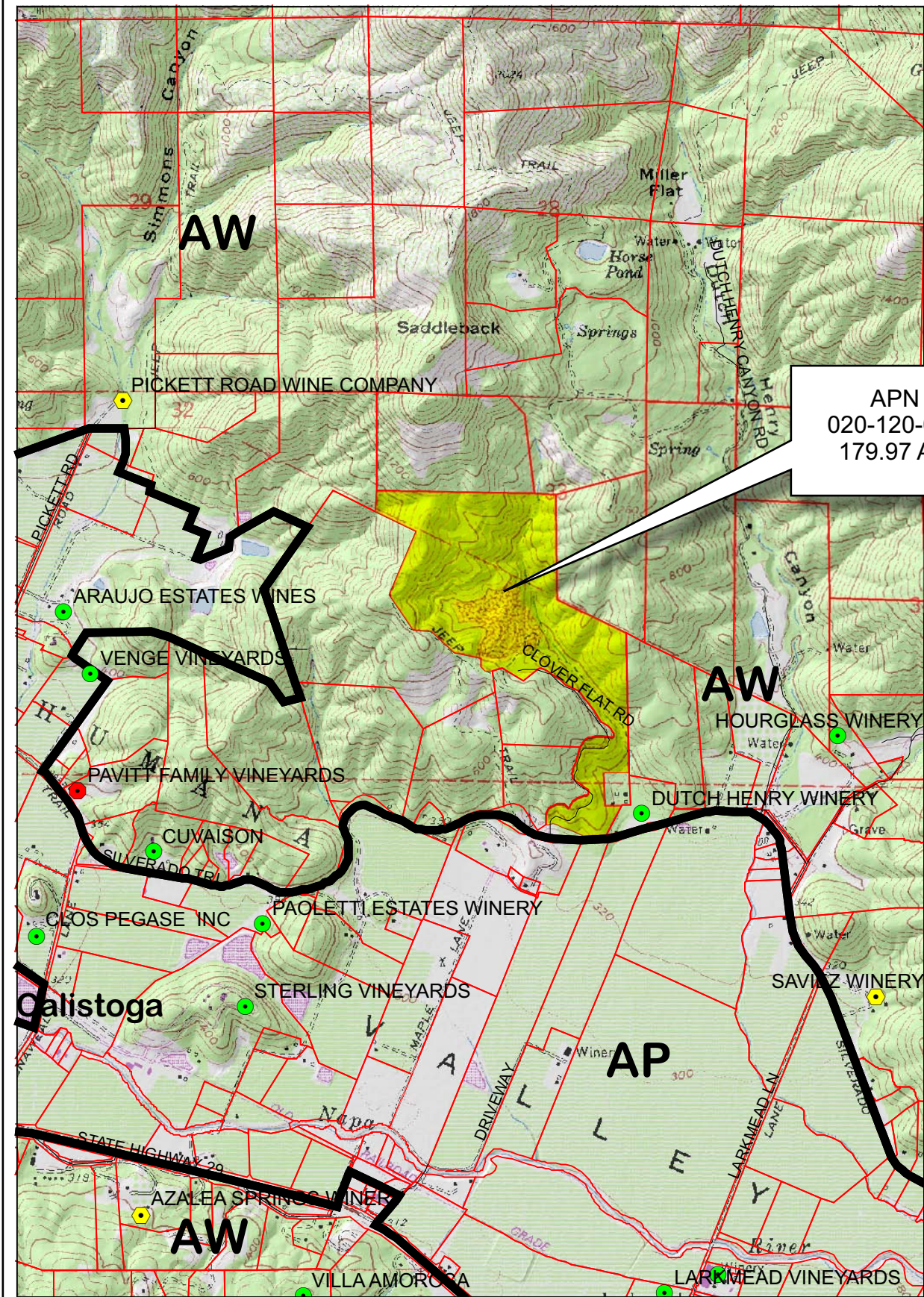
APN  
020-120-020  
08-30-2011  
11C UP

SCALE IN MILES  
0 2

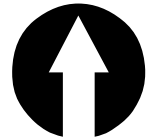




# CLOVER FLAT RESOURCE RECOVERY PARK



APN  
020-120-020  
179.97 Ac.

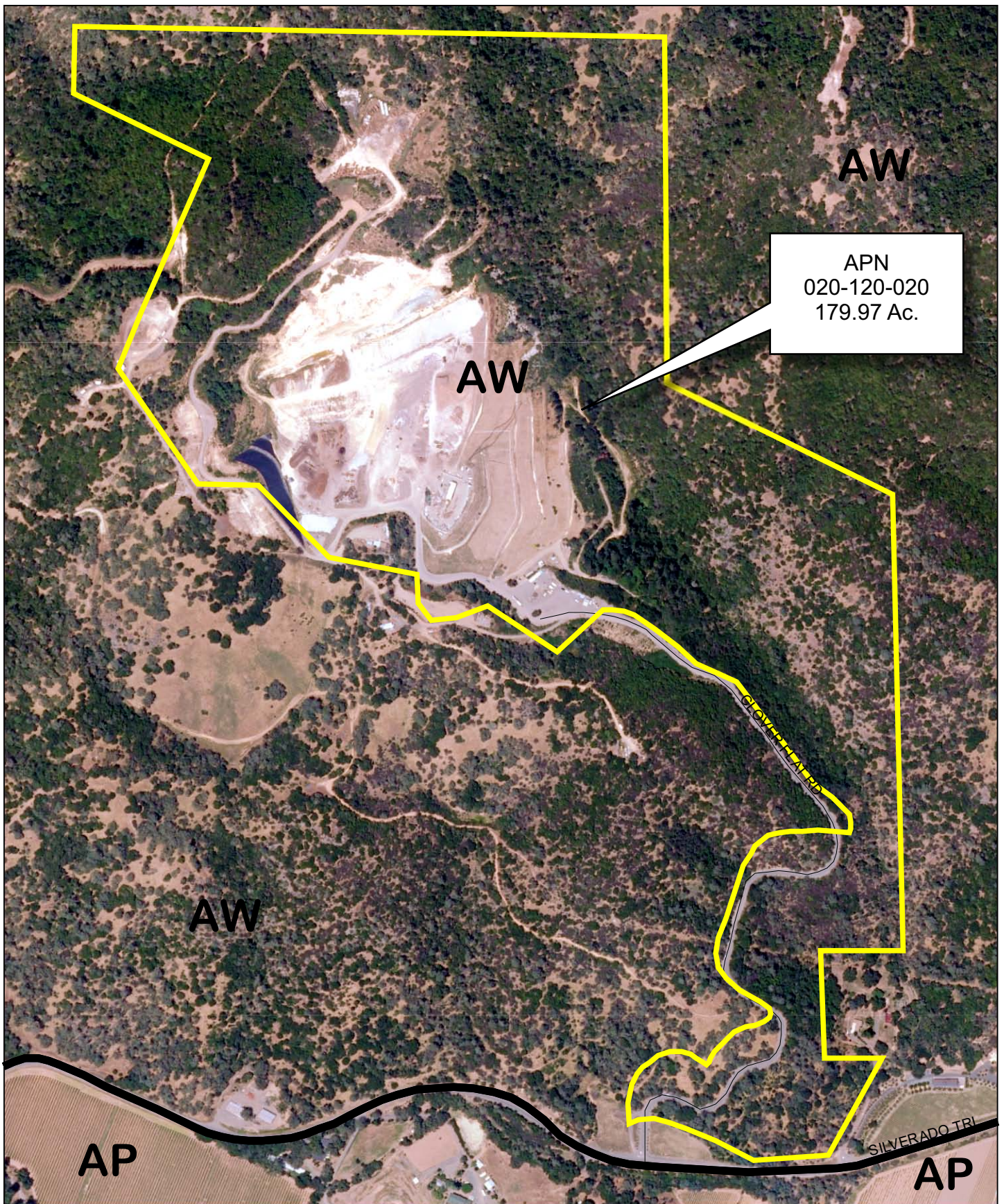


## Legend

- Wineries in Vicinity**
- Producing
  - Approved
  - Pending
  - Zoning
  - Parcels



# CLOVER FLAT RESOURCE RECOVERY PARK



0 287.5 575 1,150 1,725 2,300 Feet

Existing Conditions 2010

08-30-2011

11C

UP

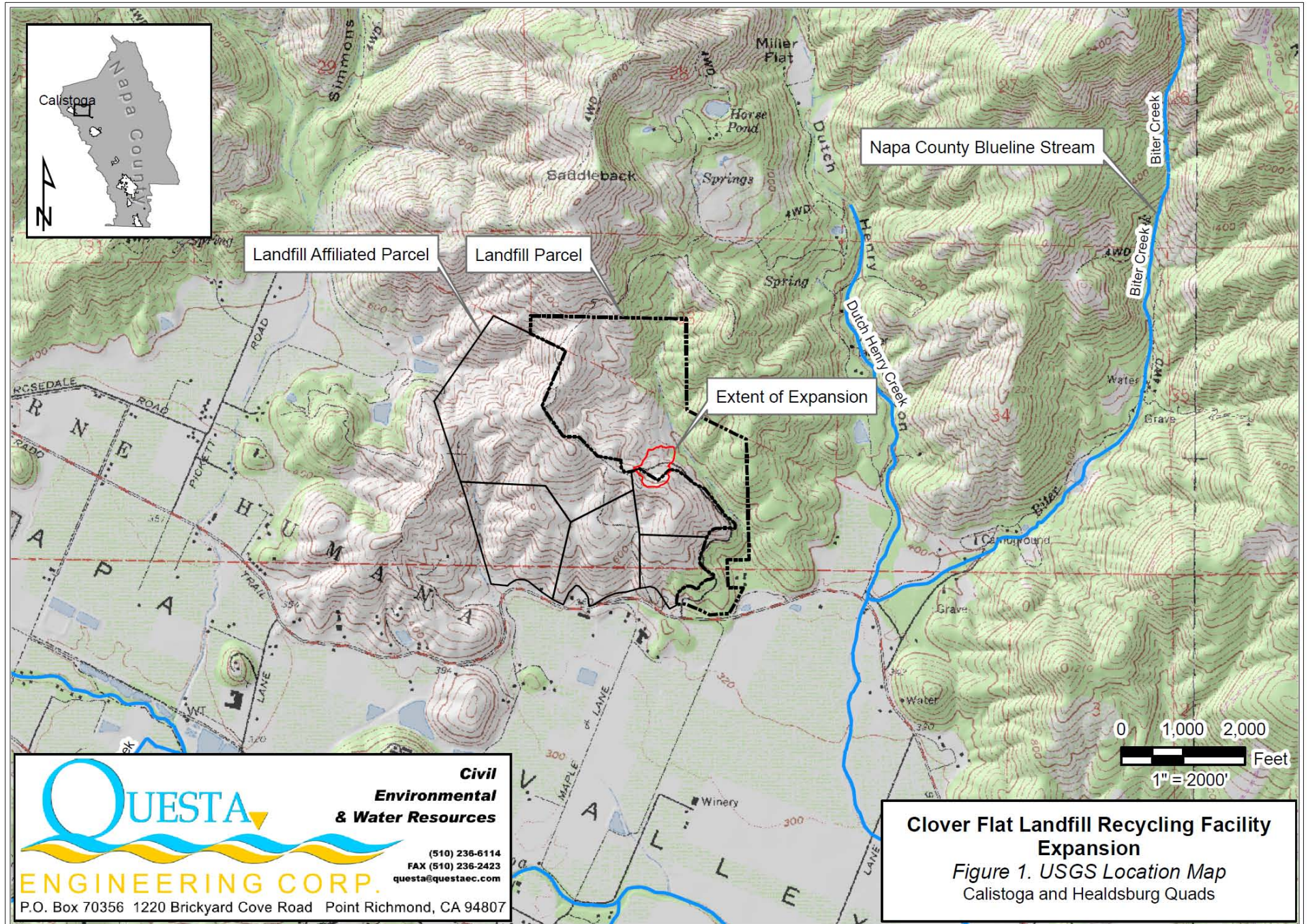


Napa County Conservation  
Development and Planning Department

Clover\_Flat\_RRP\_up1.cdr



# CLOVER FLAT RESOURCE RECOVERY PARK



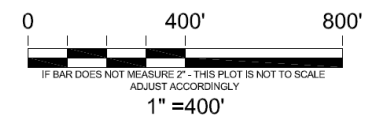


# CLOVER FLAT RESOURCE RECOVERY PARK



TREE MITIGATION PLAN  
LOCATION MAP

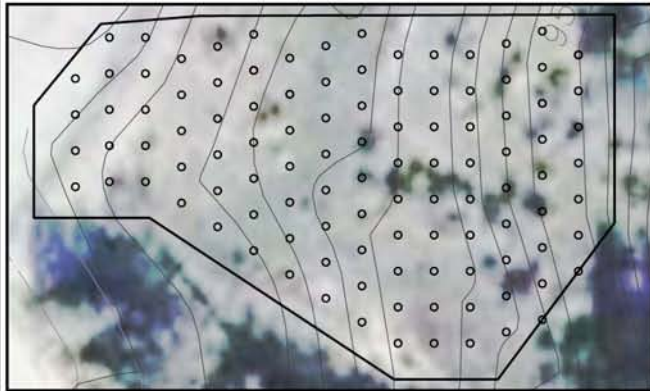
**QUESTA**  
ENGINEERING CORP.  
Civil  
Environmental  
& Water Resources  
(510) 236-6114  
FAX (510) 236-3423  
questa@questacorp.com  
P.O. Box 70356 1220 Brickyard Cove Road Point Richmond, CA 94807



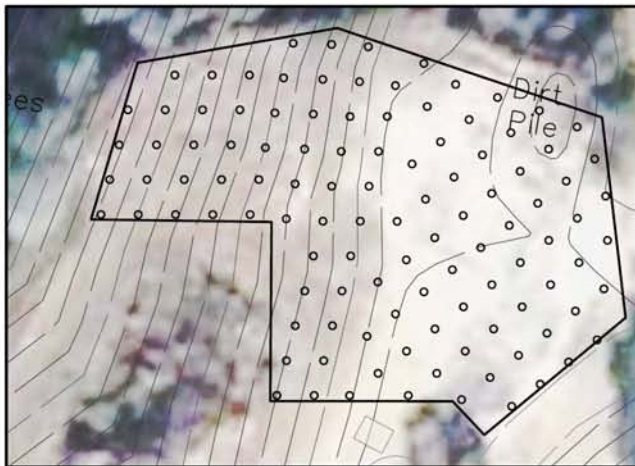


# CLOVER FLAT RESOURCE RECOVERY PARK

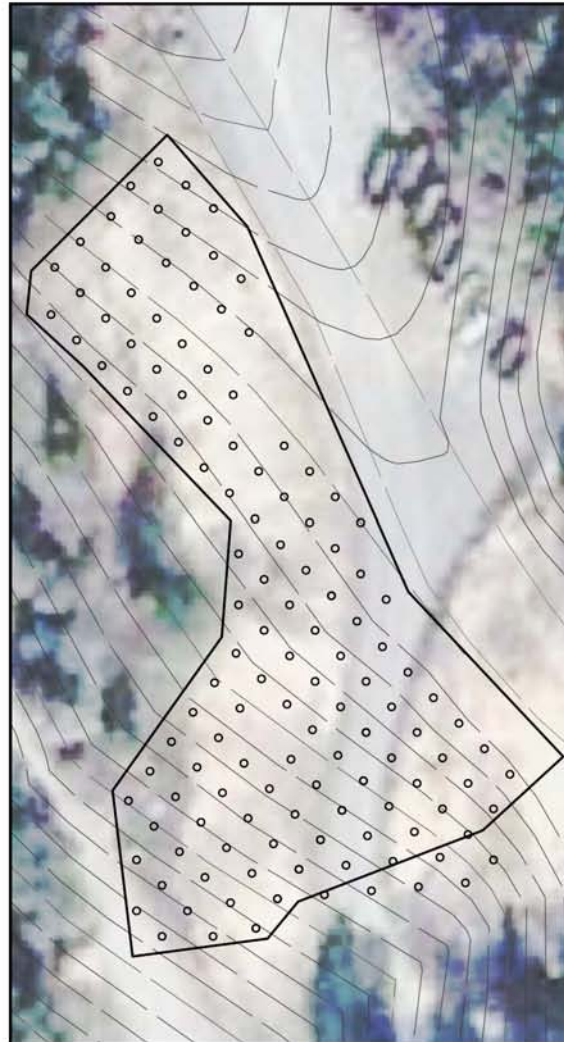
MITIGATION PLANTING AREA 1 ~ 110 PLANTINGS



MITIGATION PLANTING AREA 2 ~ 110 PLANTINGS

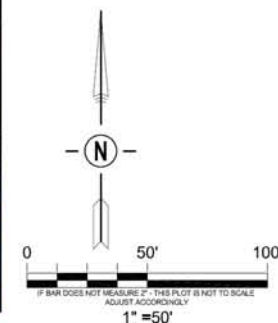


MITIGATION PLANTING AREA 3 ~ 130 PLANTINGS



PLANTING LEGEND				
Name	Size			Total
Tree Planting Location	Supercell or D-16	D-40 or 1GC	4 GC TP, TP-4, or 5GC	
CANOPY SPECIES				
Black Oak ( <i>Quercus kelloggii</i> )	5	0	5	10
Blue Oak ( <i>Quercus douglasii</i> )	20	25	5	50
Coast Live Oak ( <i>Quercus agrifolia</i> )	25	60	15	100
Valley Oak ( <i>Quercus lobata</i> )	0	5	5	10
Douglas Fir ( <i>Pseudotsuga menziesii</i> )	10	25	5	40
Foothill Pine ( <i>Pinus sabiniana</i> )	20	35	5	60
UNDERSTORY SPECIES				
Buckeye ( <i>Aesculus californica</i> )	5	10	5	20
Elderberry ( <i>Sambucus mexicana</i> )	5	10	5	20
Manzanita ( <i>Arctostaphylos manzanita</i> ssp. <i>glaucescens</i> )	5	10	5	20
Toyon ( <i>Heteromeles arbutifolia</i> )	5	10	5	20
<b>TOTAL</b>	<b>100</b>	<b>190</b>	<b>60</b>	<b>350</b>

## TREE MITIGATION PLAN



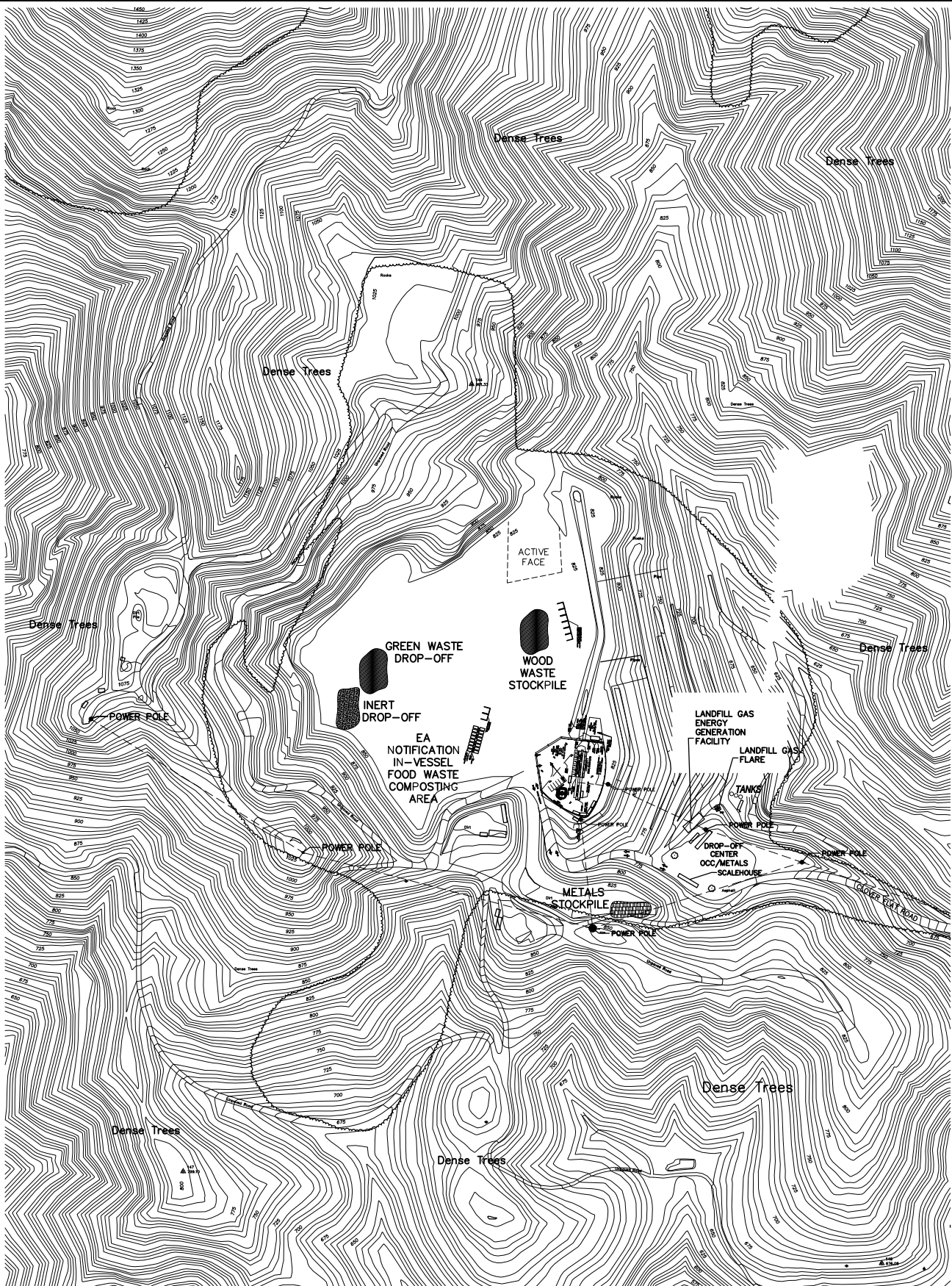
**Note:** The Planting Plan summarizes the quantities, mitigation planting, locations, and species of plants to be used. Plantings shall be staggered at **variable** distances, at a spacing of approximately 12 to 15 feet apart to facilitate watering and establishment, and to create a natural appearance. Plantings shall be grouped so that clusters of at least three of one species are planted together.

Remove all debris and equipment from work area prior to start of work.

**QUESTA**  
ENGINEERING CORP.  
Civil  
Environmental  
& Water Resources  
(510) 236-6114  
FAX (510) 236-2423  
questa@questaec.com  
P.O. Box 70356 1220 Brickyard Cove Road Point Richmond, CA 94807



# CLOVER FLAT RESOURCE RECOVERY PARK



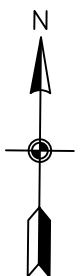
**TOTAL COMPLIANCE MANAGEMENT**  
 P.O. BOX 1952  
 SACRAMENTO, CALIFORNIA 95812  
 PHONE (916) 739-1700 FAX (916) 739-1214  
 SCALE: 1" = 150'  
 DATE: APRIL 8, 2011  
 CLIENT: 170.05.01 CFL  
 FILE NAME: 170.05.19 CFL CMPST

**CURRENT OPERATIONS  
 SITE MAP**  
 FOR  
 CLOVER FLAT LANDFILL  
 4380 SILVERADO TRAIL  
 CALISTOGA, CALIFORNIA

**FIGURE  
 1**  
 DRAWN BY:  
 NSRE  
 ORIGIN DATE:  
 06/04/09

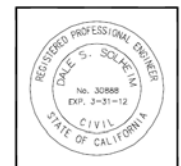
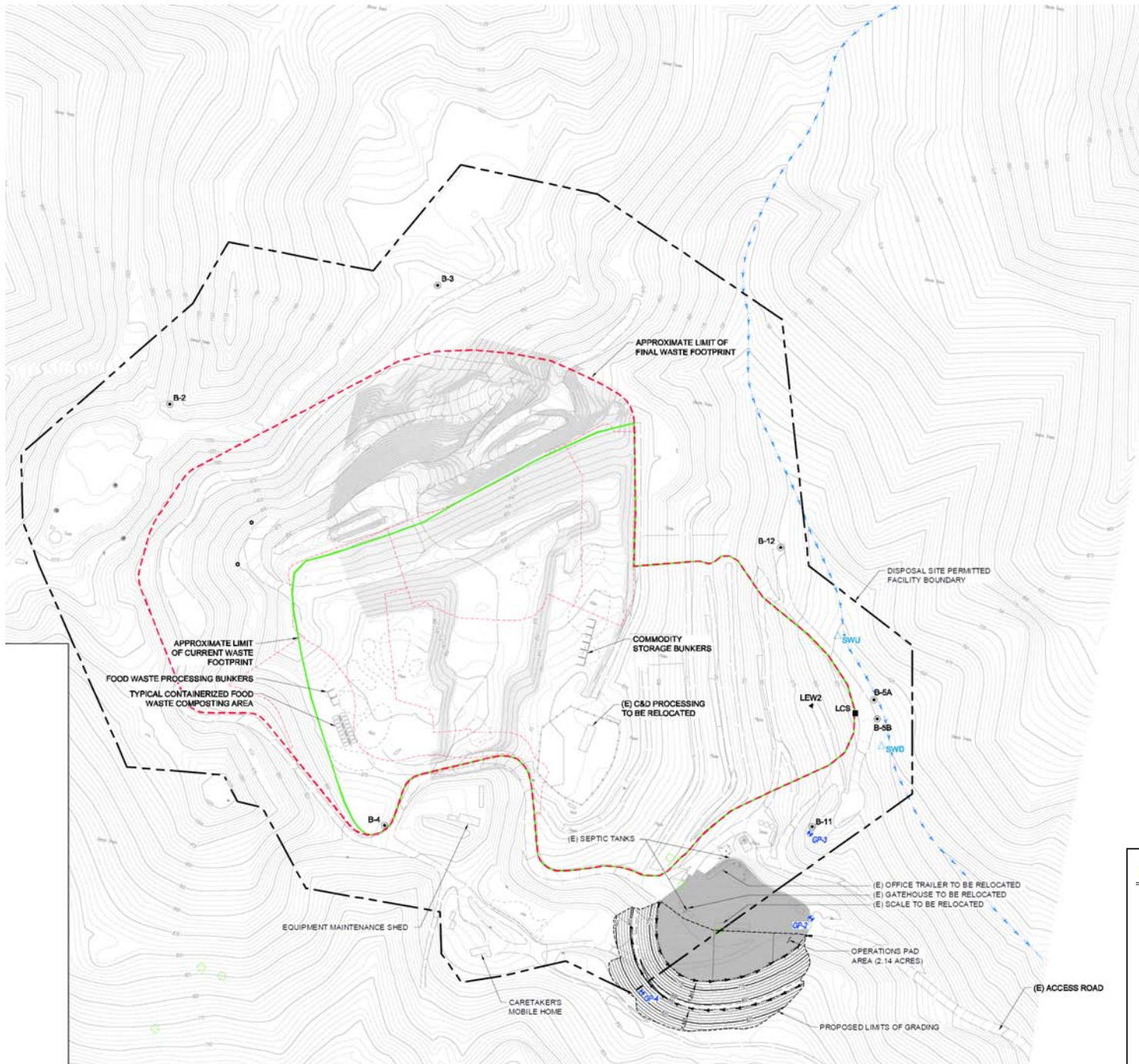
## LEGEND

- POWER POLE
- POWER LINE

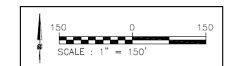




# CLOVER FLAT RESOURCE RECOVERY PARK



## CUP MODIFICATIONS SITE MAP



### LEGEND

- B-2 ● GROUNDWATER MONITORING WELL
- C&D ● CONSTRUCTION AND DEMOLITION
- (E) EXISTING
- GP-2 ● LANDFILL GAS (LFG) MONITORING WELL
- LEW2 ● LEACHATE COLLECTION WELL
- LCS ● LEACHATE COLLECTION SUMP
- SWU ▲ SURFACE WATER MONITORING LOCATION

NOTE: TOPOGRAPHY IS BASED ON AN AERIAL SURVEY PREPARED USING PHOTOGRAMMETRIC METHODS BY TETRA TECH GEOMATIC TECHNOLOGIES (LAFAYETTE, CA) DATED JUNE 30, 2009



# CLOVER FLAT RESOURCE RECOVERY PARK

