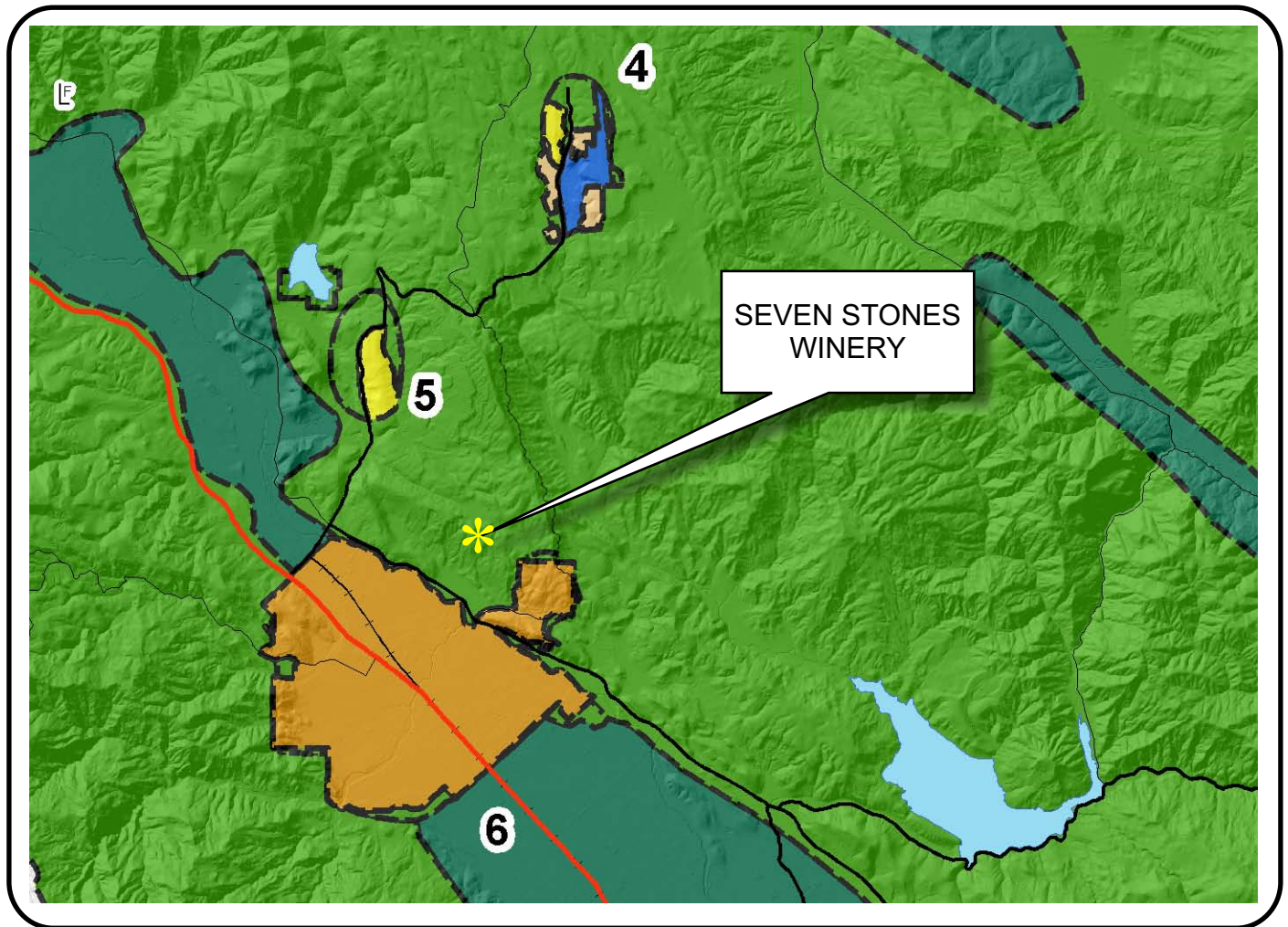


# NAPA COUNTY LAND USE PLAN 2008 - 2030



## LEGEND

### URBANIZED OR NON-AGRICULTURAL

- Cities
- Urban Residential \*
- Rural Residential \*
- Industrial
- Public-Institutional
- Study Area

### OPEN SPACE

- Agriculture, Watershed & Open Space
- Agricultural Resource

### TRANSPORTATION

- Mineral Resource
- Railroad
- Limited Access Highway
- Major Road
- Secondary Road
- Airport
- Airport Clear Zone
- Landfill - General Plan

\* See Action Item AG/LU-114.1 regarding agriculturally zoned areas within these land use designations

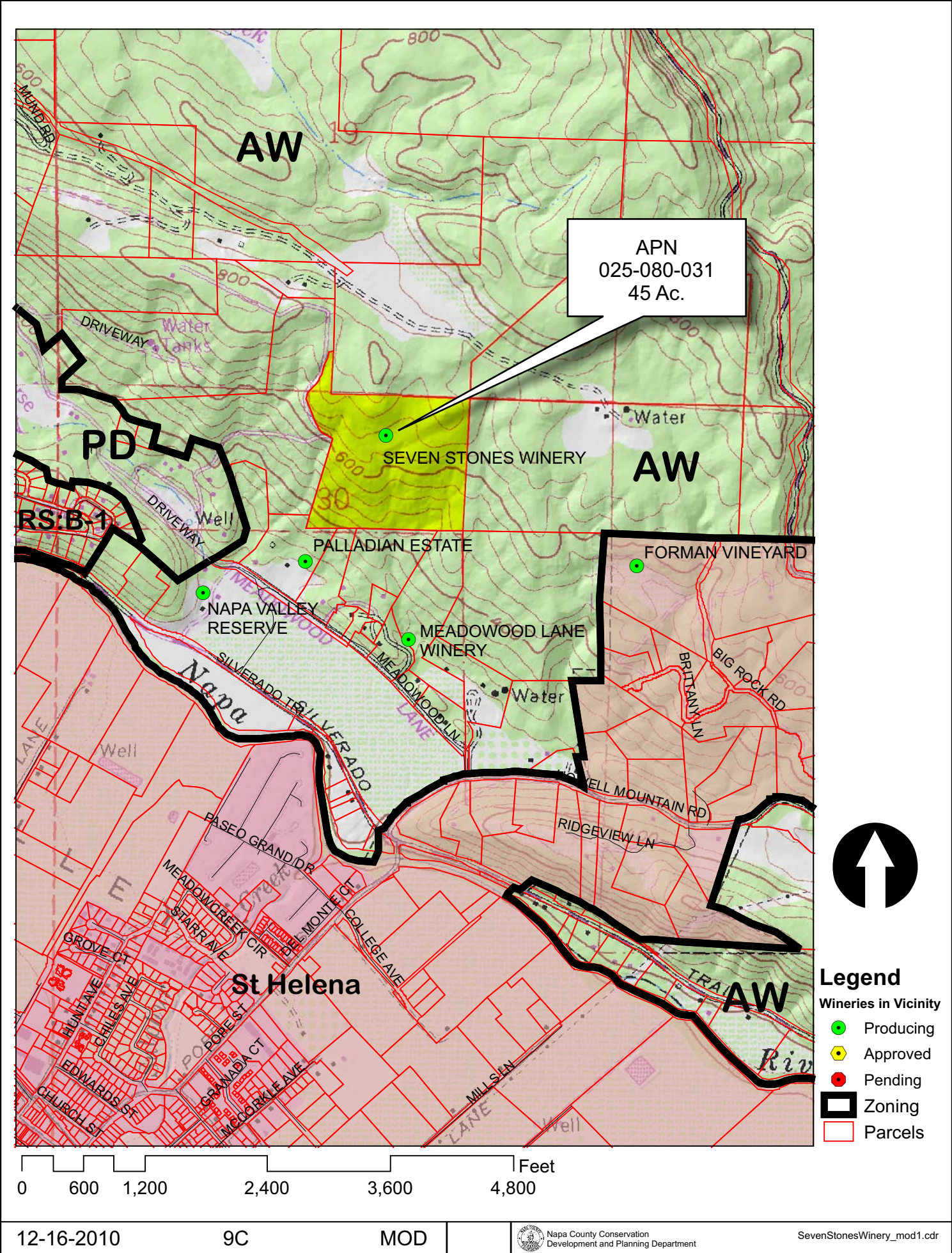
APN  
025-080-031  
12-16-2010  
9C MOD

SCALE IN MILES  
0 2



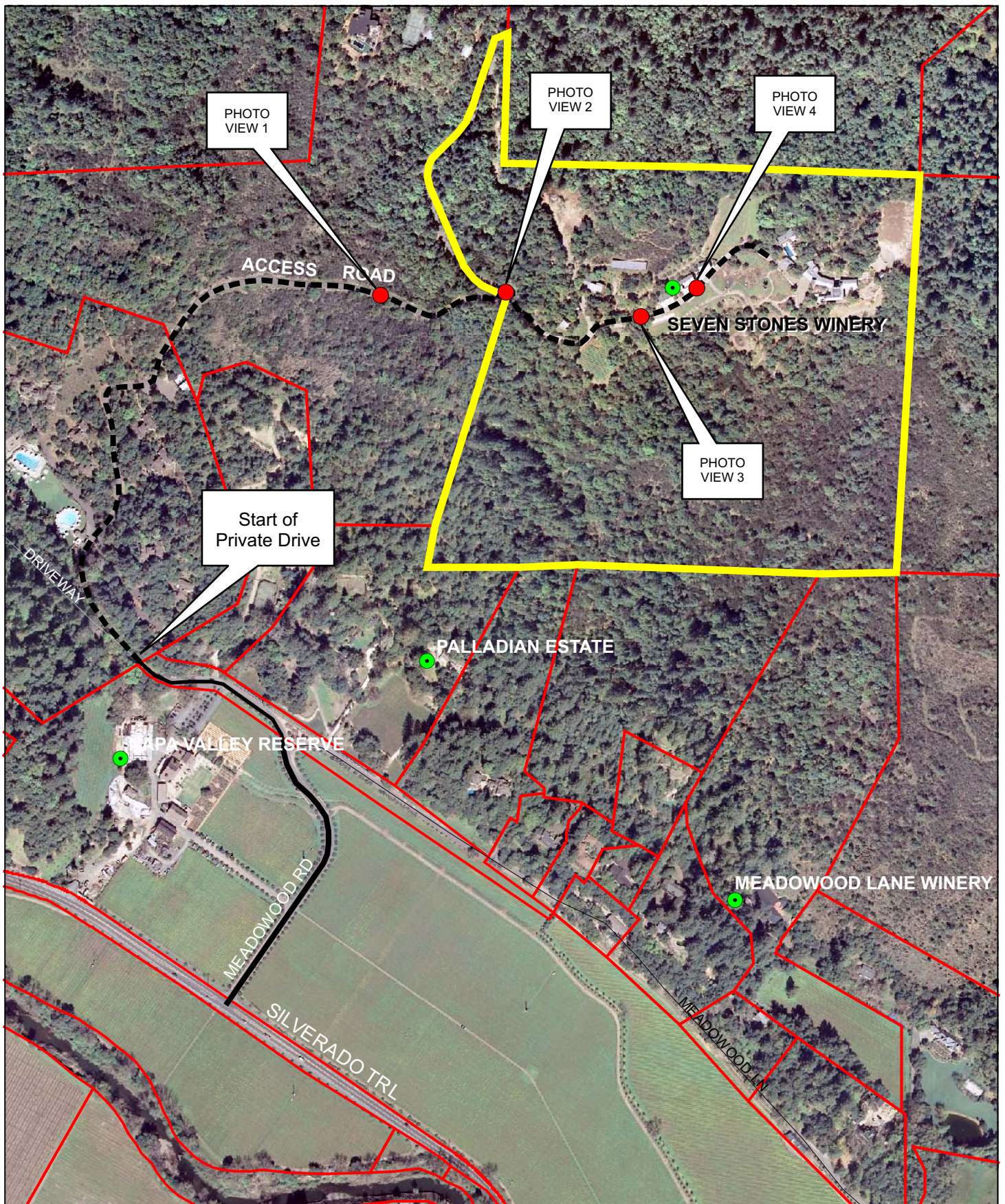


# SEVEN STONES WINERY





# SEVEN STONES WINERY



0 225 450 900 1,350 1,800 Feet

ACCESS ROAD

12-16-2010

9C

MOD

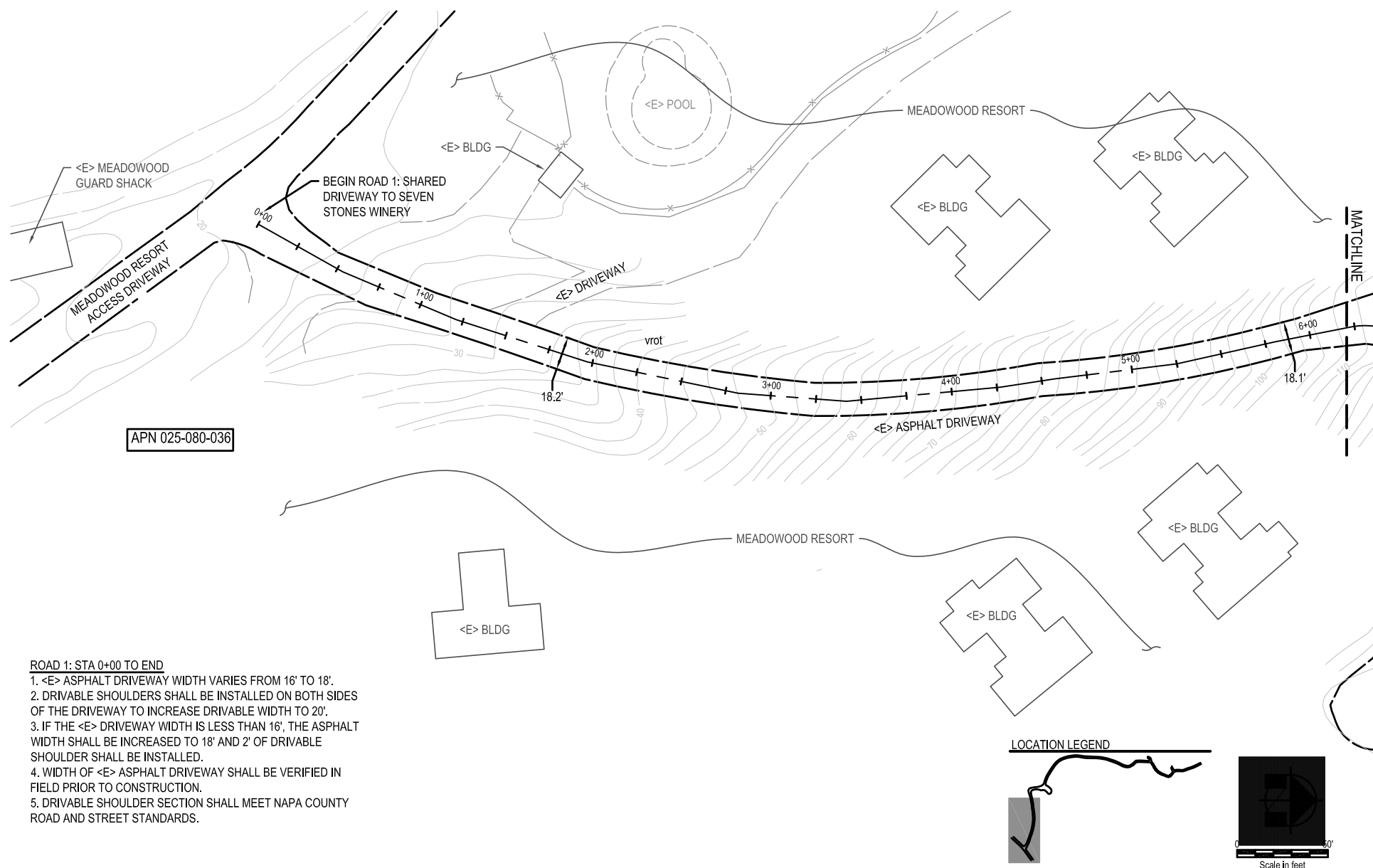


Napa County Conservation  
Development and Planning Department

SevenStonesWinery\_mod1.cdr

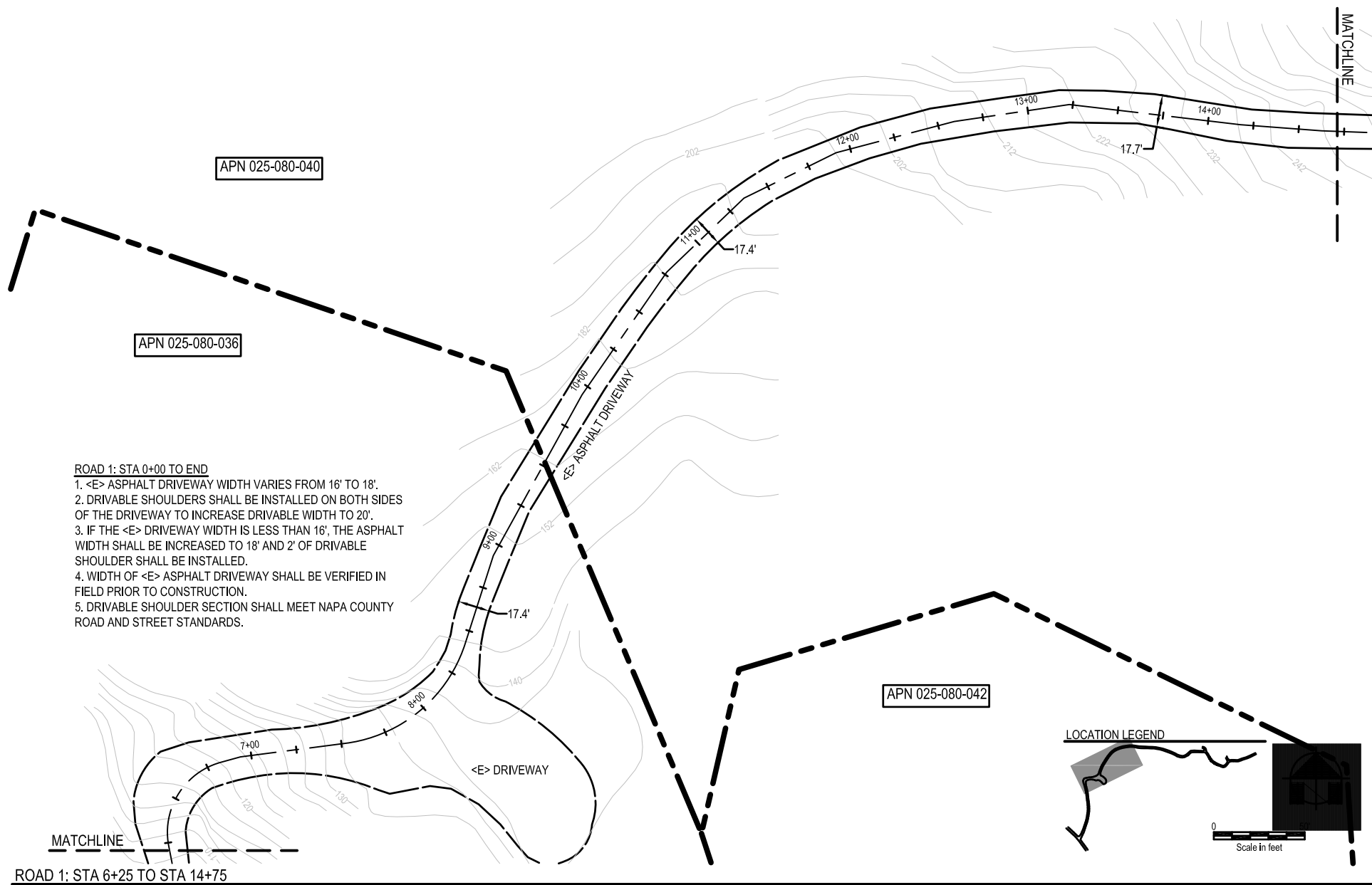


# SEVEN STONES WINERY

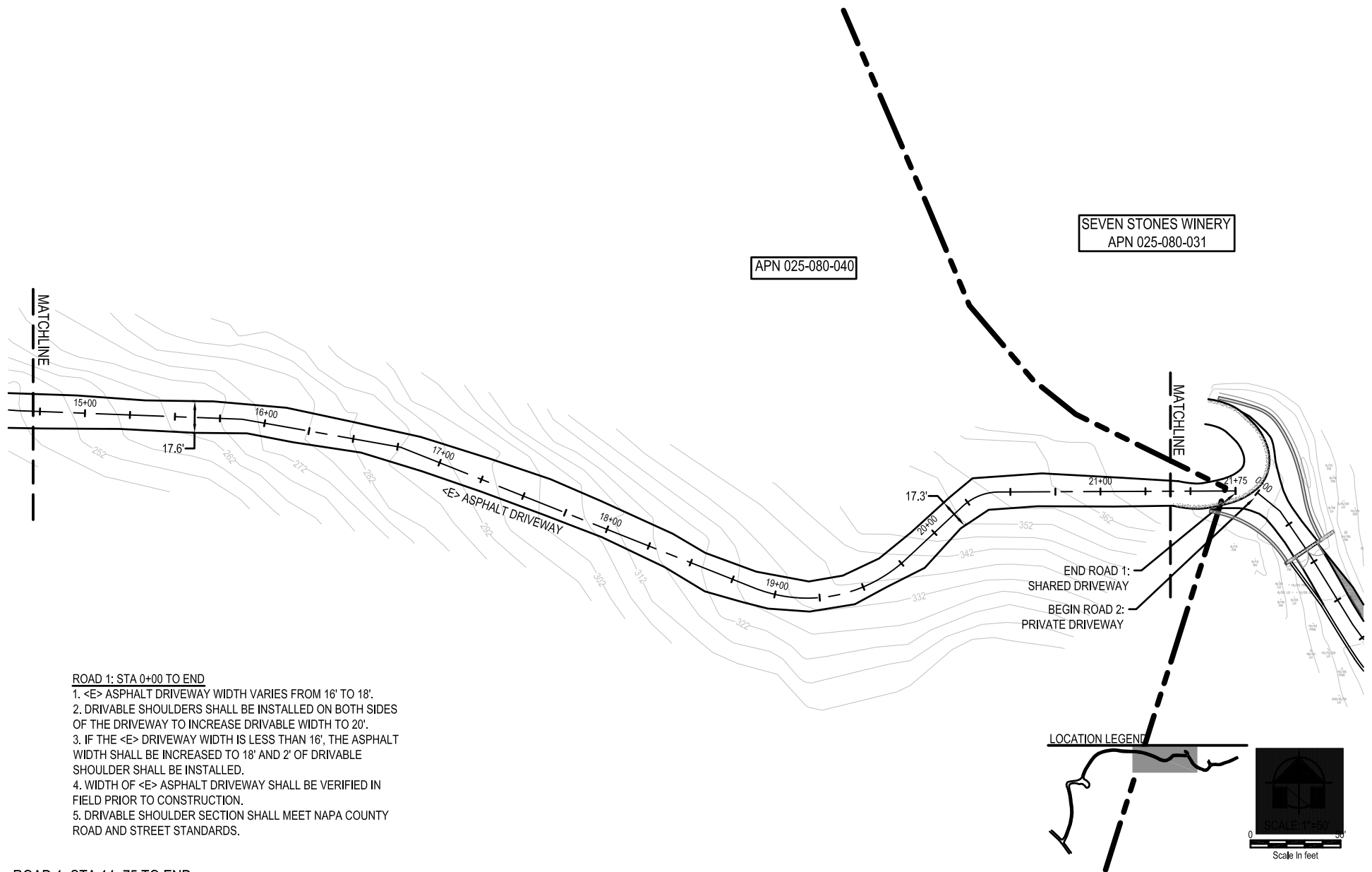


RAOD 1: STA 0+00 TO STA 6+25

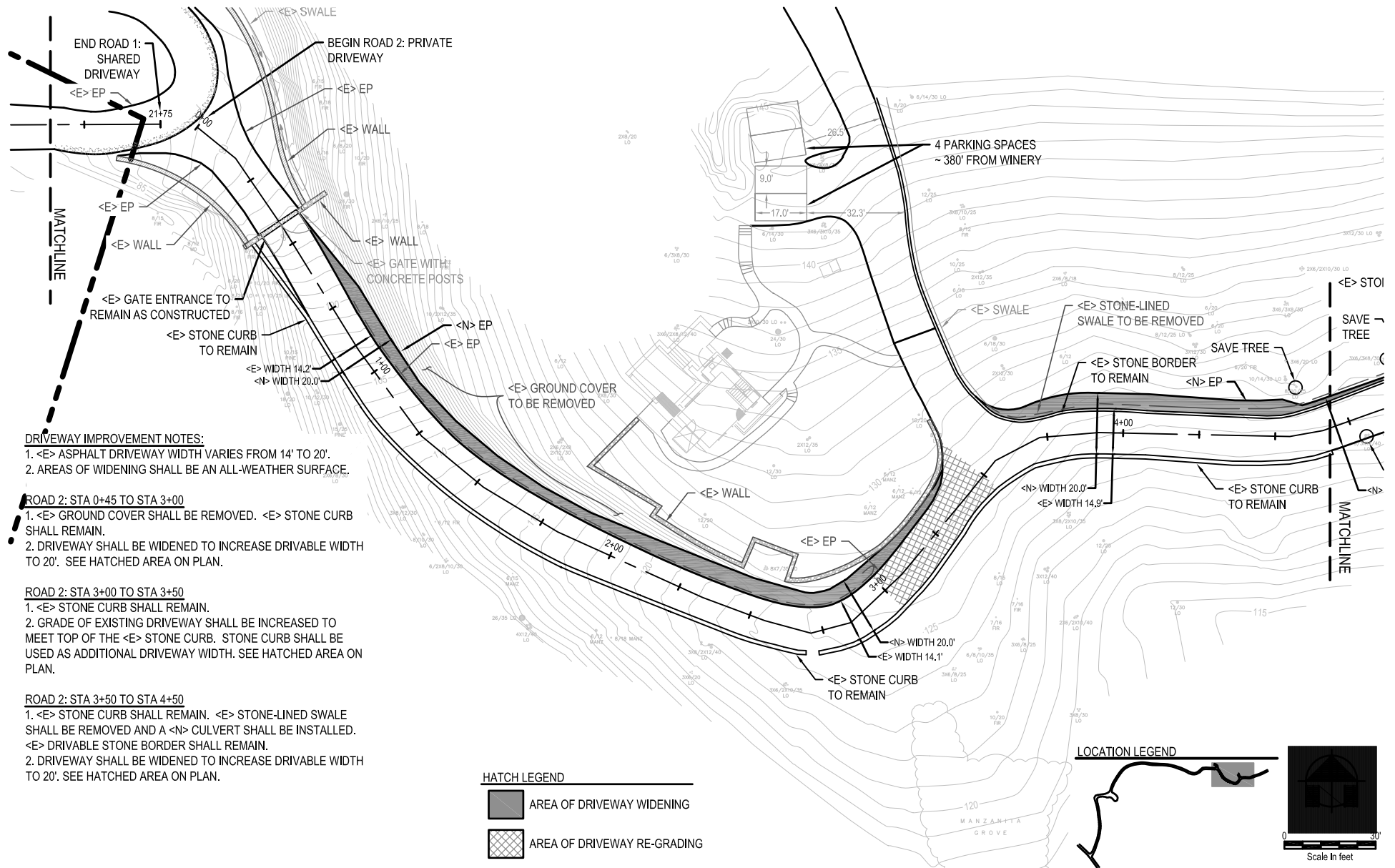
# SEVEN STONES WINERY



# SEVEN STONES WINERY



# SEVEN STONES WINERY



ROAD 2: STA 0+00 TO STA 4+75

# SEVEN STONES WINERY

## DRIVEWAY IMPROVEMENT NOTES:

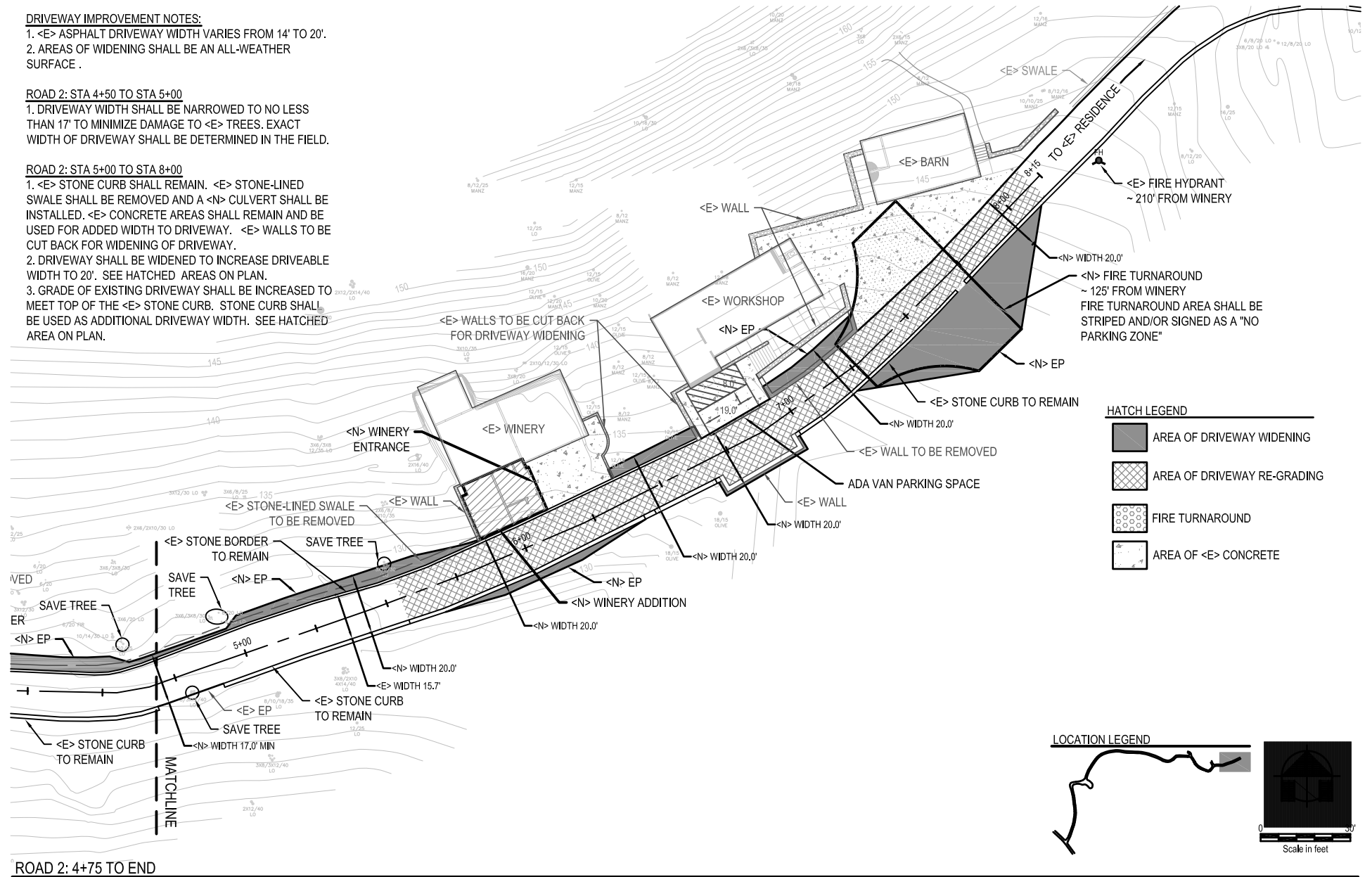
1. <E> ASPHALT DRIVEWAY WIDTH VARIES FROM 14' TO 20'.
2. AREAS OF WIDENING SHALL BE AN ALL-WEATHER SURFACE.

## ROAD 2: STA 4+50 TO STA 5+00

1. DRIVEWAY WIDTH SHALL BE NARROWED TO NO LESS THAN 17' TO MINIMIZE DAMAGE TO <E> TREES. EXACT WIDTH OF DRIVEWAY SHALL BE DETERMINED IN THE FIELD.

## ROAD 2: STA 5+00 TO STA 8+00

1. <E> STONE CURB SHALL REMAIN. <E> STONE-LINED SWALE SHALL BE REMOVED AND A <N> CULVERT SHALL BE INSTALLED. <E> CONCRETE AREAS SHALL REMAIN AND BE USED FOR ADDED WIDTH TO DRIVEWAY. <E> WALLS TO BE CUT BACK FOR WIDENING OF DRIVEWAY.
2. DRIVEWAY SHALL BE WIDENED TO INCREASE DRIVEABLE WIDTH TO 20'. SEE HATCHED AREAS ON PLAN.
3. GRADE OF EXISTING DRIVEWAY SHALL BE INCREASED TO MEET TOP OF THE <E> STONE CURB. STONE CURB SHALL BE USED AS ADDITIONAL DRIVEWAY WIDTH. SEE HATCHED AREA ON PLAN.





## SEVEN STONES WINERY



PHOTO VIEW 1

Meadowood Lane (Road 1) Looking East Toward Winery



## SEVEN STONES WINERY



PHOTO VIEW 2

Road 2 - Parcel / Winery Entrance Gate



# SEVEN STONES WINERY



Looking Towards 17ft Section

PHOTO VIEW 3



# SEVEN STONES WINERY

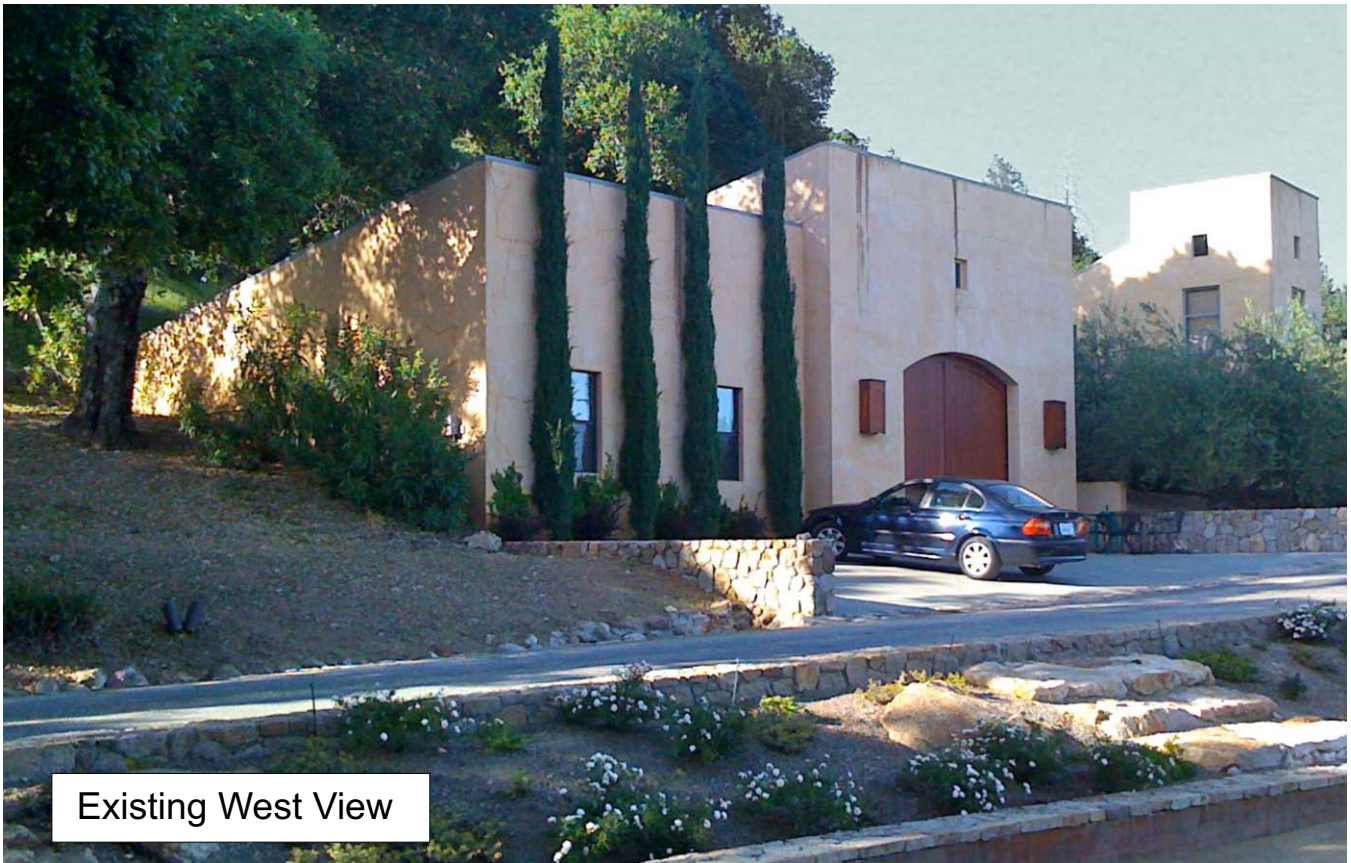


Looking Towards Hammerhead

PHOTO VIEW 4



# SEVEN STONES WINERY



Existing West View



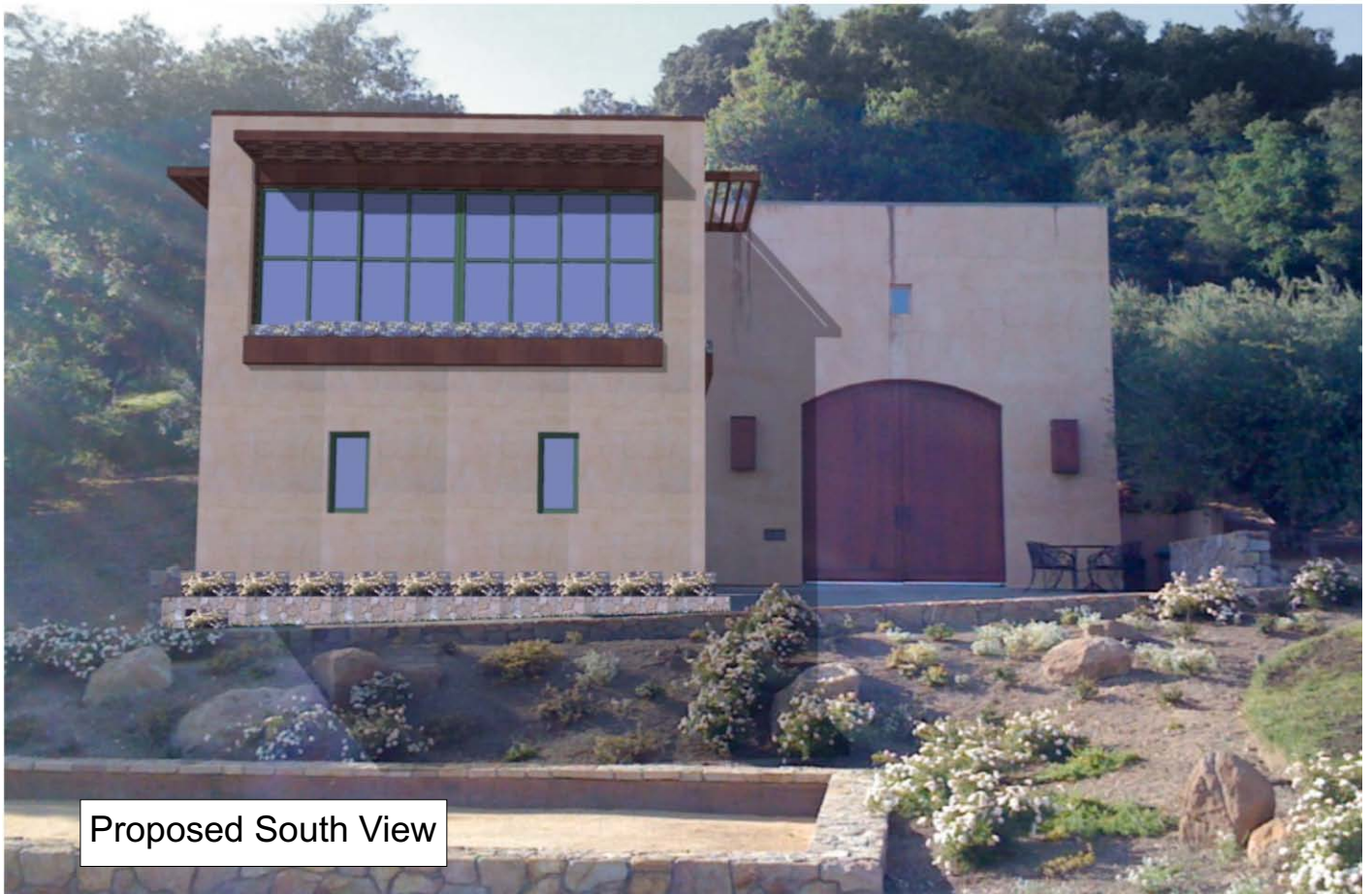
Proposed West View



# SEVEN STONES WINERY



Existing South View



Proposed South View



# SEVEN STONES WINERY



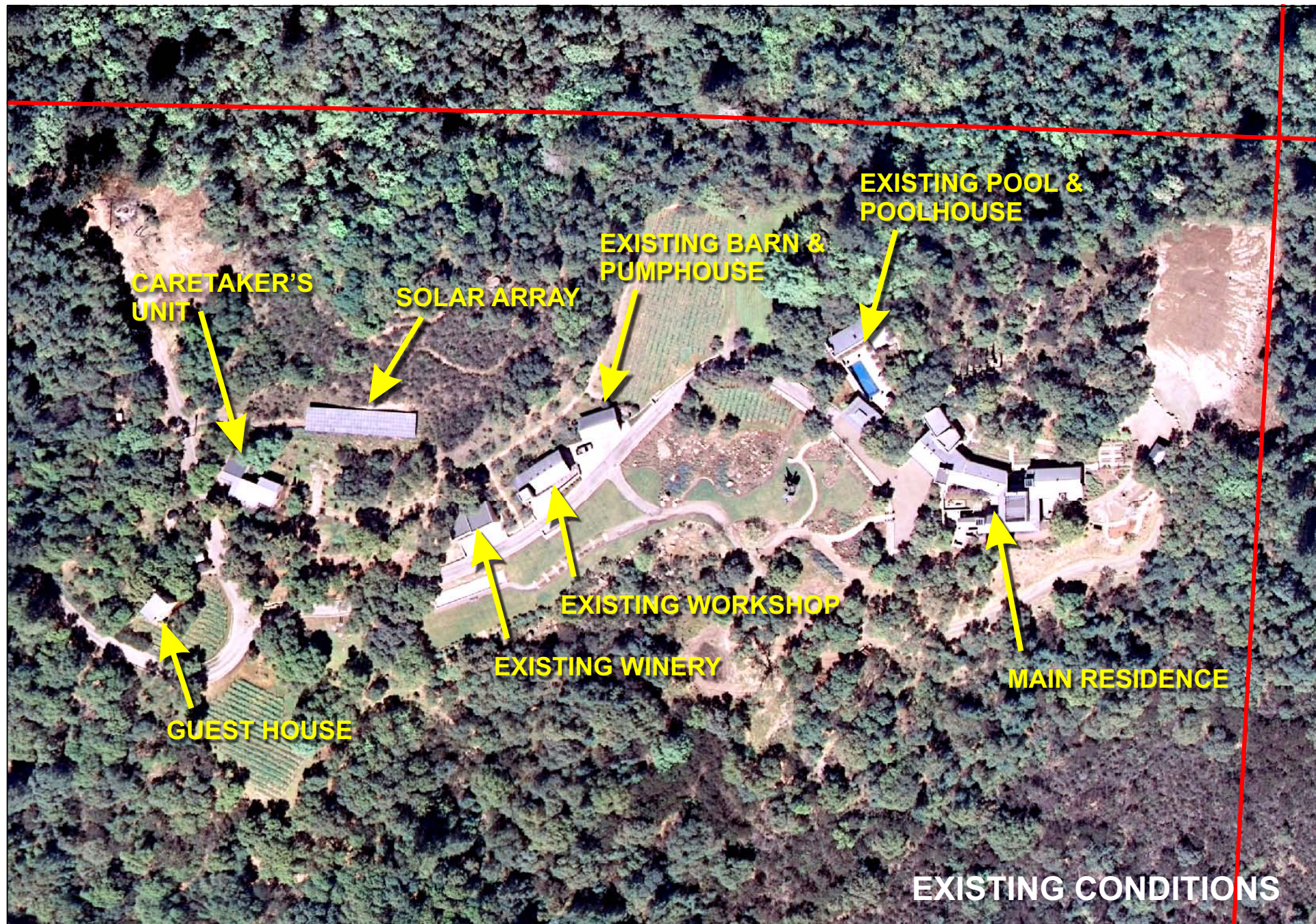
Existing East View



Proposed East View



# SEVEN STONES WINERY



0 80 160 320 480 640 Feet

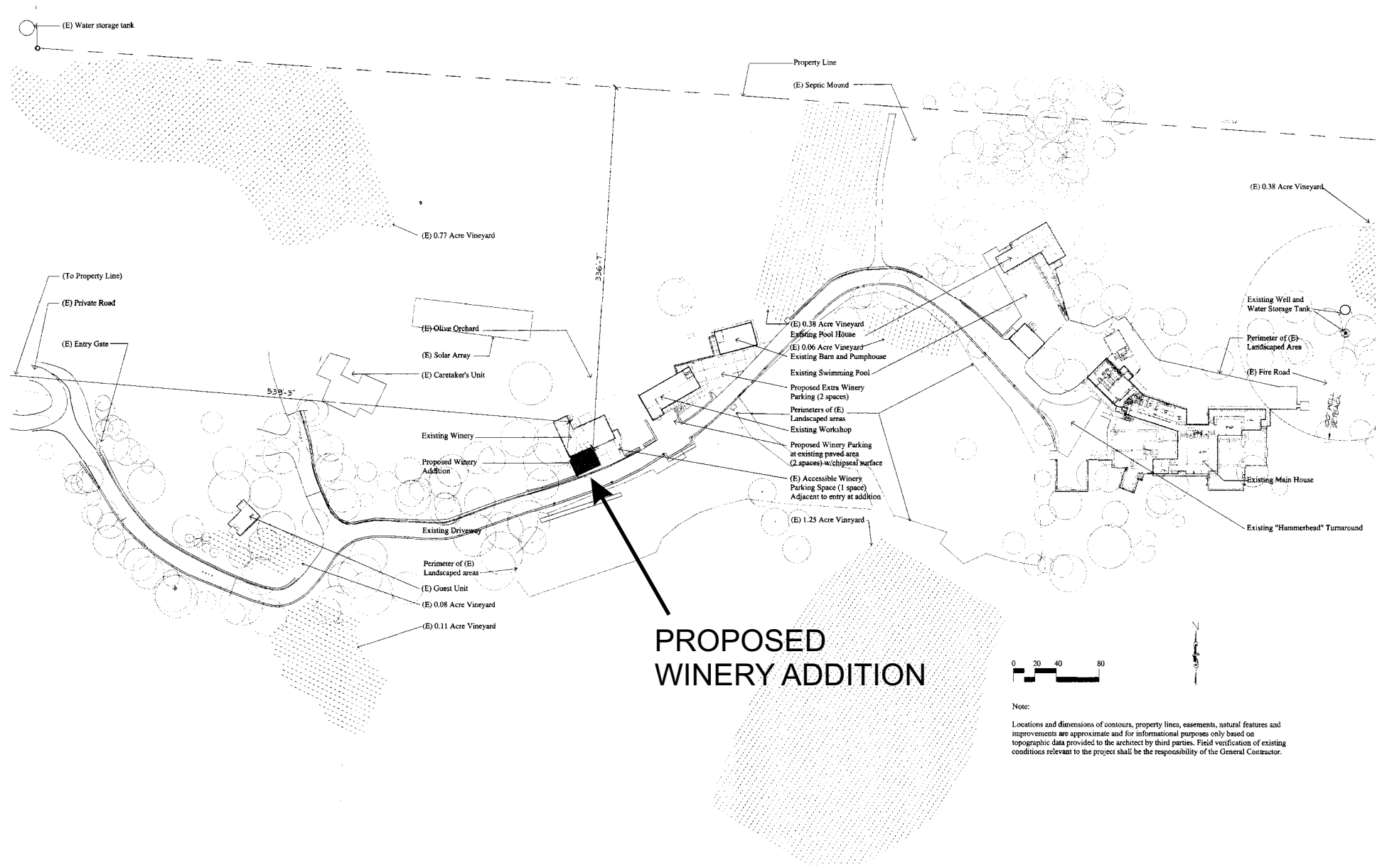
01-01-2009 2C UP

Napa County Conservation  
Development and Planning Department

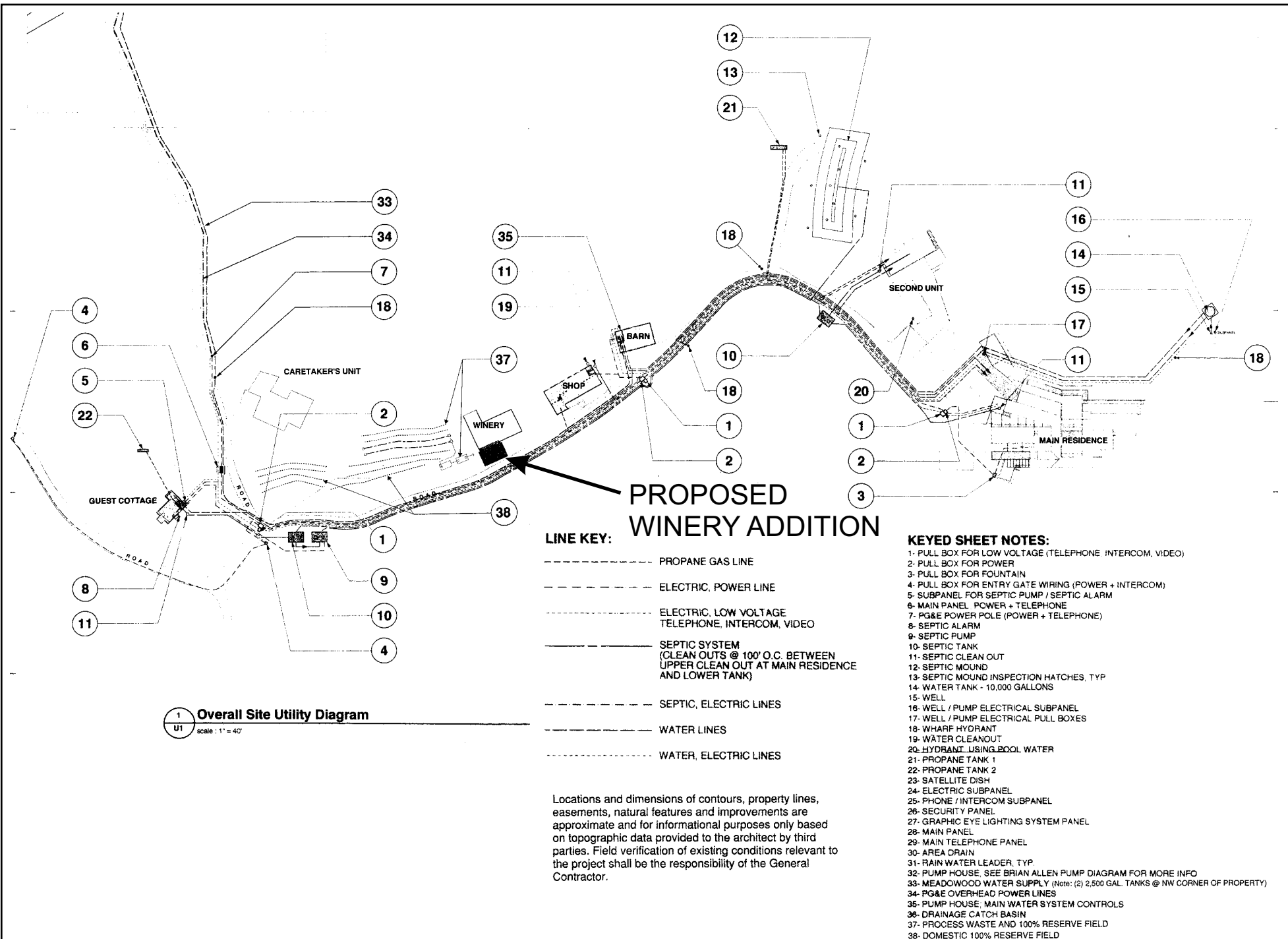
SevenStonesWinery\_mod1.cdr



# SEVEN STONES WINERY

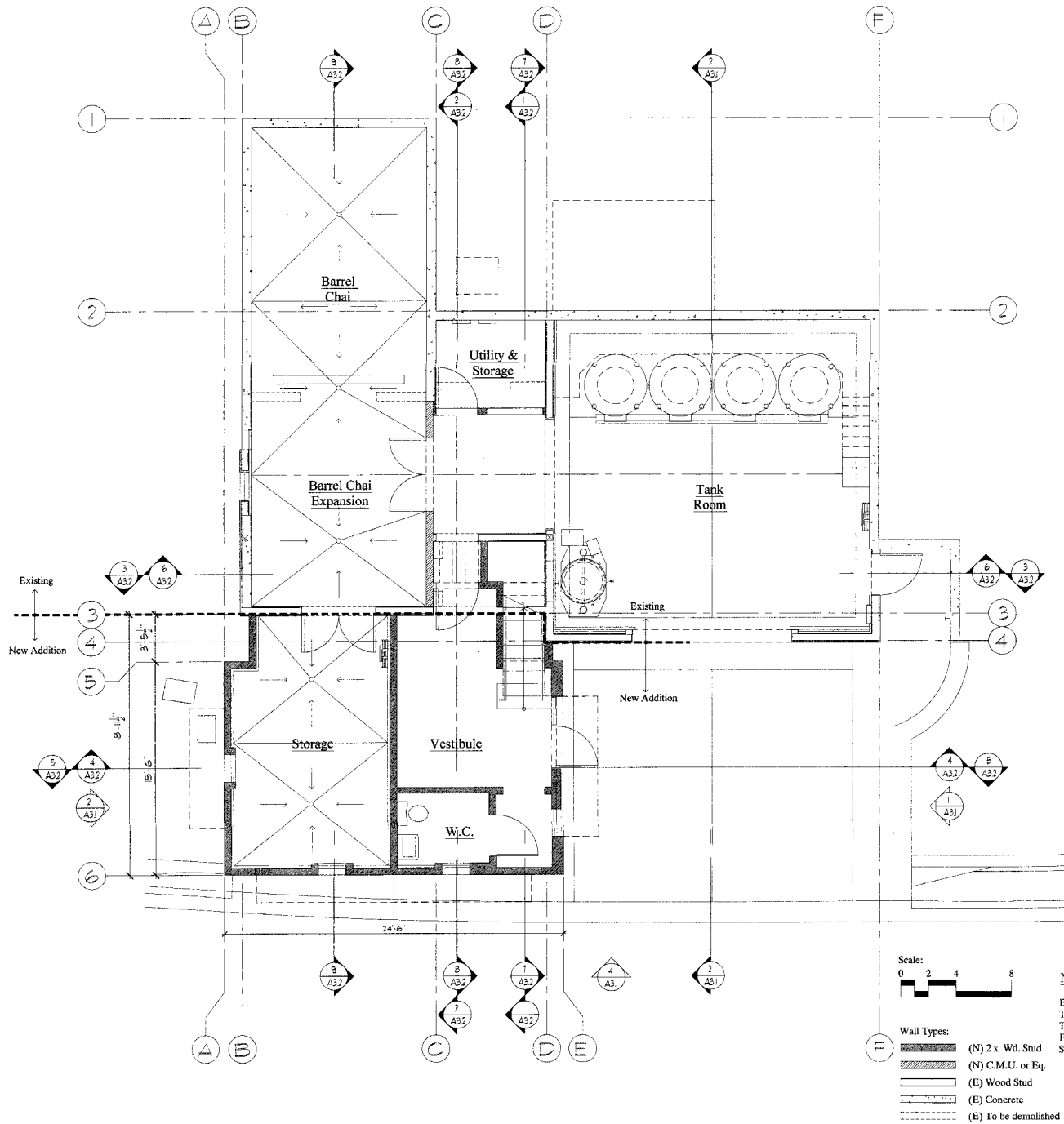


# SEVEN STONES WINERY



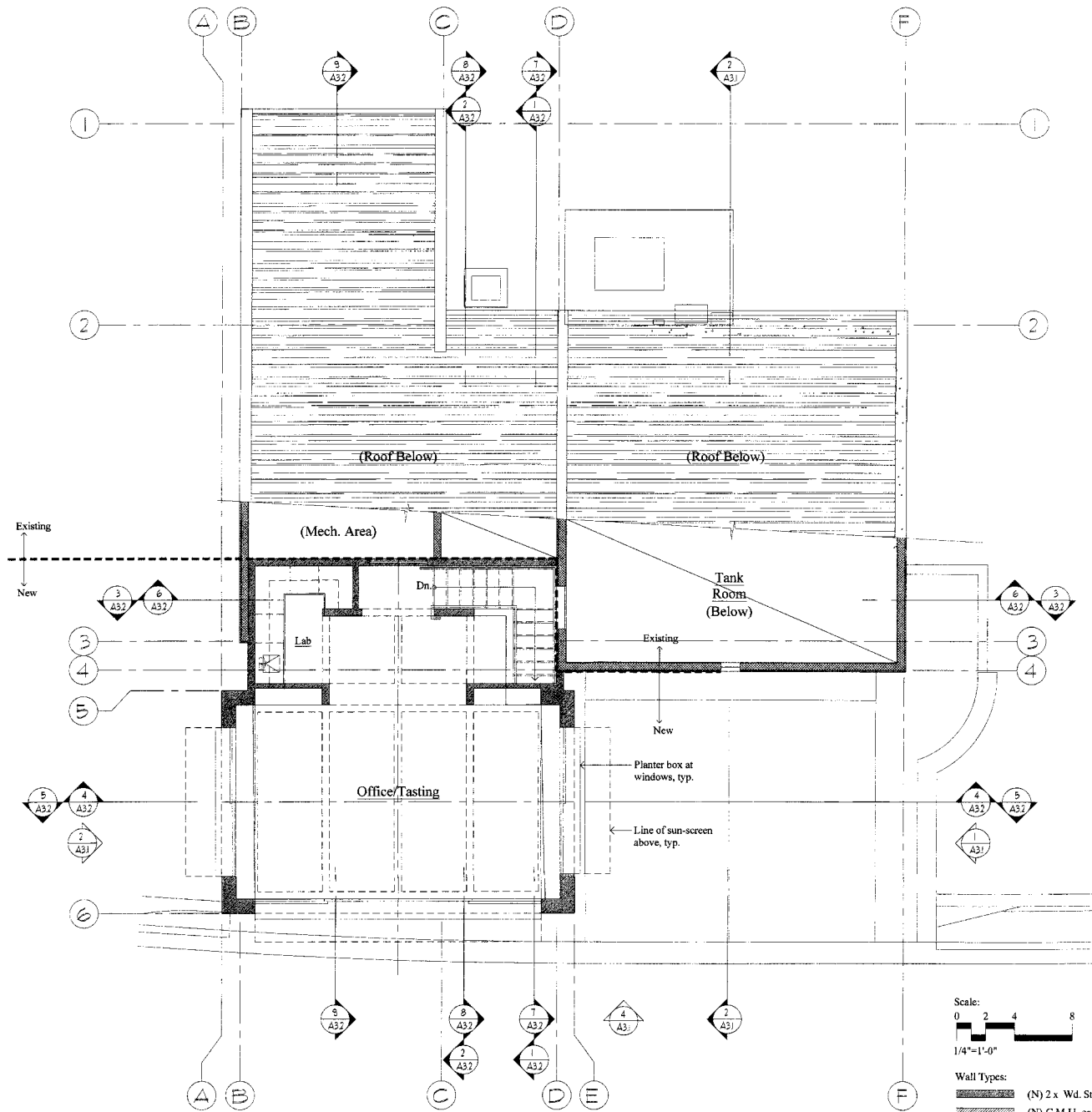


# SEVEN STONES WINERY



LOWER LEVEL FLOOR PLAN

# SEVEN STONES WINERY



UPPER LEVEL  
FLOOR PLAN



# SEVEN STONES WINERY



② West Elevation

① East Elevation



④ South Elevation

③ Section-Elevation at (E) Fermentation Room

See floorplans for finish, fenestration and framing notes.



1/4"=1'-0"