

## WICC Board

The WICC Board of Directors serves as an advisory committee to Napa County Board of Supervisors. The role of the WICC is to assist the County Supervisors in their decision-making process and serve as a conduit for citizen input by gathering, analyzing and providing recommendations related to the management of watershed resources. The WICC Board is comprised of 17 members representing a broad range of community interests and includes representatives from each of the County's incorporated cities/town.

The WICC Board has a responsibility to publicly evaluate and discuss matters relating to watershed restoration projects and resource protection activities, coordination of land acquisition, and development of a long-term watershed resource management programs. The WICC Board also provides public outreach and education, monitoring coordination, inventory and assessment of watershed resources, and watershed data management services.

Visit [www.napawatersheds.org](http://www.napawatersheds.org) to learn more about what the WICC and sign-up on the WICC website to stay informed of watershed happenings in Napa County!

## Napa County Board of Supervisors



A Tradition of Stewardship  
A Commitment to Service

The WICC is funded by Napa County and serves as an Advisory Committee to the County Board of Supervisors.

# watershed

## information center & conservancy of napa county

An online resource to educate and support the community in its efforts to maintain and improve the health of Napa County's watershed lands.

## Contact Information

**R. Patrick Lowe**, Deputy Planning Director  
**Jeff Sharp**, Watershed Coordinator  
Conservation, Development and Planning  
1195 Third Street, Suite 210  
Napa, California 94559  
Telephone: (707) 253-4417  
Fax: (707) 253-4336  
Email: [info@napawatersheds.org](mailto:info@napawatersheds.org)

## Acknowledgements

Napa Co. Flood & Water Conservation Dist.  
Napa County Resource Conservation Dist.  
Napa Co. Public Works  
California Dept. of Conservation  
California Dept. of Water Resources  
U.S. Army Corps of Engineers

And many others who have contributed to the wealth of information available on the WICC WebCenter.

## Photo Credits

Jeff Tangen: Cover, back & Napa vineyard  
Todd Adams: Fish, butterfly and working in the watershed

## Watershed Information Center & Conservancy (WICC)

1195 Third Street, Suite 210  
Napa, California 94559



[www.napawatersheds.org](http://www.napawatersheds.org)

## The WICC WebCenter

[www.napawatersheds.org](http://www.napawatersheds.org)

*"The WICC WebCenter supports an on-going conversation among all of the county's watershed participants. It is an important community networking tool and resource for our research and education efforts. Visit the WICC WebCenter—it's your best source for the latest information about our watershed."*

Mark Luce, WICC Board Member  
2nd District Supervisor,  
Napa County Board of Supervisors

The WICC WebCenter encourages collaboration, cooperation, and consistency among those working in the watersheds of Napa County by coordinating and facilitating partnerships among individuals, agencies, and organizations involved in improving watershed health, supporting watershed research activities and providing watershed information and education. The WICC WebCenter is the place to stay informed, contribute, and find support for watershed activities and organizations.

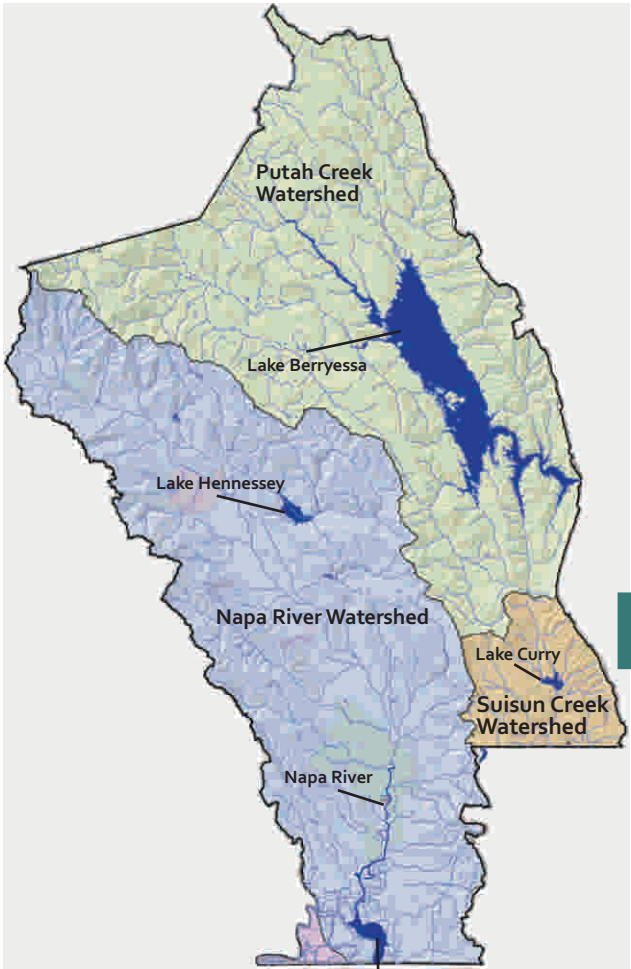




WebCenter Features and Services

An innovative online community, the WICC WebCenter enhances the coordination of and participation in watershed projects. It supports scientific involvement, provides online communications and library services designed to facilitate community awareness and engagement, and information management and planning support tools that help to:

- centralize watershed news and information;
- promote watershed education and public involvement;
- coordinate watershed events and activities;
- encourage information sharing;
- share and coordinate watershed monitoring;
- connect with regional and statewide watershed efforts through a searchable knowledge-based database;
- coordinate the efforts of volunteers, agencies and organizations;
- assist in identifying high-priority information gaps;
- integrate online mapping;
- provide resources for those working in Napa County’s watersheds, including teachers, parents and the community.



The WICC WebCenter is an online community portal established to guide and support community efforts to maintain and improve the health of Napa County’s watershed lands. It provides information about Napa County’s watersheds, such as watershed data, reports and monitoring information, a library of watershed research, and useful interactive maps. It highlights organizations participating in watershed enhancement and protection projects and encourages citizens and organizations to get involved and stay informed.

Visit the WICC WebCenter  
www.napawatersheds.org

A resource for all those working in Napa County’s watersheds—scientists, educators, policymakers, landowners and the community—the WICC WebCenter will help you learn about and participate in efforts to improve the health of Napa County’s watershed lands.

The WICC WebCenter allows you to:

- access public information provided by groups working in the watersheds;
- create, save and share personal map views of your neighborhood, watershed, streams, etc.;
- stay informed and sign-up to receive email notices, control the types of information you receive and how often;
- develop a personal online file cabinet, called a “clickboard”, that allows you to easily store and retrieve information on the site, and to personalize links to information of interest;
- participate in online discussion forums and polls.

Information Services  
for Watershed Groups

Register your watershed group to get direct access to the interactive information and communication tools on the site. You can upload information to the library and share it with others, create calendars, add information to online maps, and create a web presence for your group.

Think of the WICC WebCenter as your group’s communication manager, administrative assistant and information management department all rolled into one online community resource.

Contact Us

For more information, please contact the Conservation, Development and Planning Dept.  
1195 Third Street, Suite 210,  
Napa, California 94559; Telephone:  
(707) 253-4417; Fax: (707) 253-4336;  
Email: info@napawatersheds.org

Our Watersheds

The Napa River Watershed drains the Western half of Napa County via numerous tributaries along a 55-mile run from the headwaters of Mt. St. Helena to the San Pablo Bay. From its steep upper reaches to its tidal low lands, the Napa River Watershed supports a wide variety of habitats for fish and wildlife.

The Putah Creek Watershed, which includes Lake Berryessa, Chiles Valley and Pope Valley, supports a unique assemblage of serpentine chaparral, grasslands, oak savannas, oak and mixed oak/coniferous woodlands, and riparian, freshwater lake and cliff habitats.

The Suisun Creek Watershed drains the southeastern corner of Napa County. It supports farms, ranches and vineyards, oak woodlands and grassland habitats, as well as Lake Curry, a water supply reservoir for Solano County.



Projects & Activities

In-depth information, data and resources for projects and activities in Napa County’s watersheds.

Library

A central location for individuals or groups to post public reports, project descriptions, news and information relating to the watershed.



Maps

Interactive maps show fish and wildlife habitat, groundwater and water supplies, fish barriers, historical ecology and more. Use the map tools to create, print, save or share your personalized map views with others. Link events, discussions, documents, images, videos, news items, data or websites to any of the WICC online maps.

Calendars

View or contribute to a master calendar of watershed events and activities and manage group activity calendars.

Stay Informed

Sign up to receive customized email notices about events or information of interest to you.

Resources for Teachers

Access a variety of educational tools, resources and lesson plans. WICC is a great resource for teachers and parents.



“We invite the community at large, both individuals and organizations, to collaborate and share information to help maintain and improve the health of our watersheds.”

Charles Slutzkin, Former WICC Board Chairman, Project Manager, Napa Valley Gateway Business Park