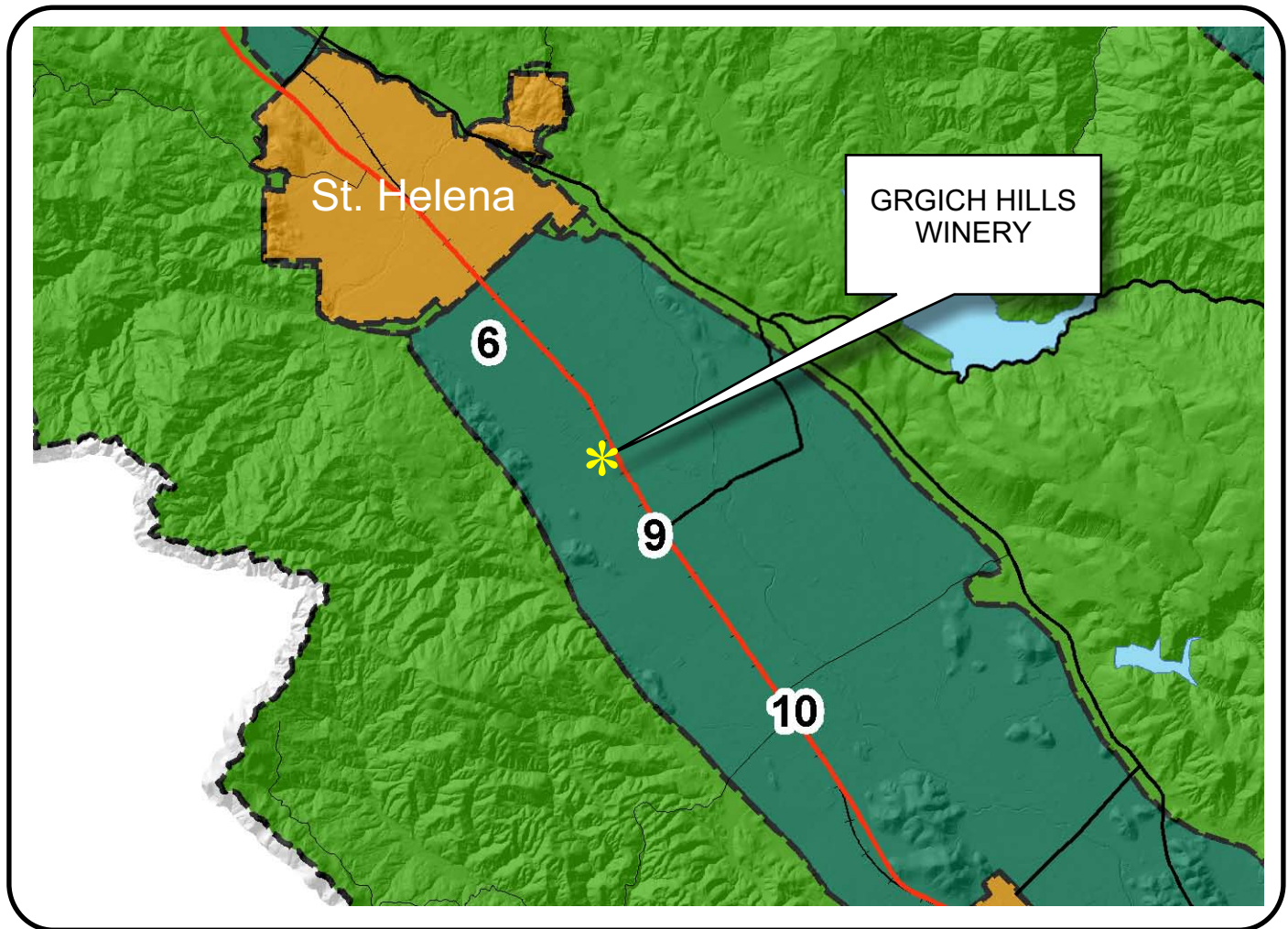





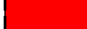


# NAPA COUNTY LAND USE PLAN 2008 - 2030





## LEGEND


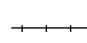






### URBANIZED OR NON-AGRICULTURAL

-  Cities
-  Urban Residential \*
-  Rural Residential \*
-  Industrial
-  Public-Institutional
-  Study Area

### OPEN SPACE

-  Agriculture, Watershed & Open Space
-  Agricultural Resource

### TRANSPORTATION

-  Mineral Resource
-  Railroad
-  Limited Access Highway
-  Major Road
-  Secondary Road
-  Airport
-  Airport Clear Zone
-  Landfill - General Plan

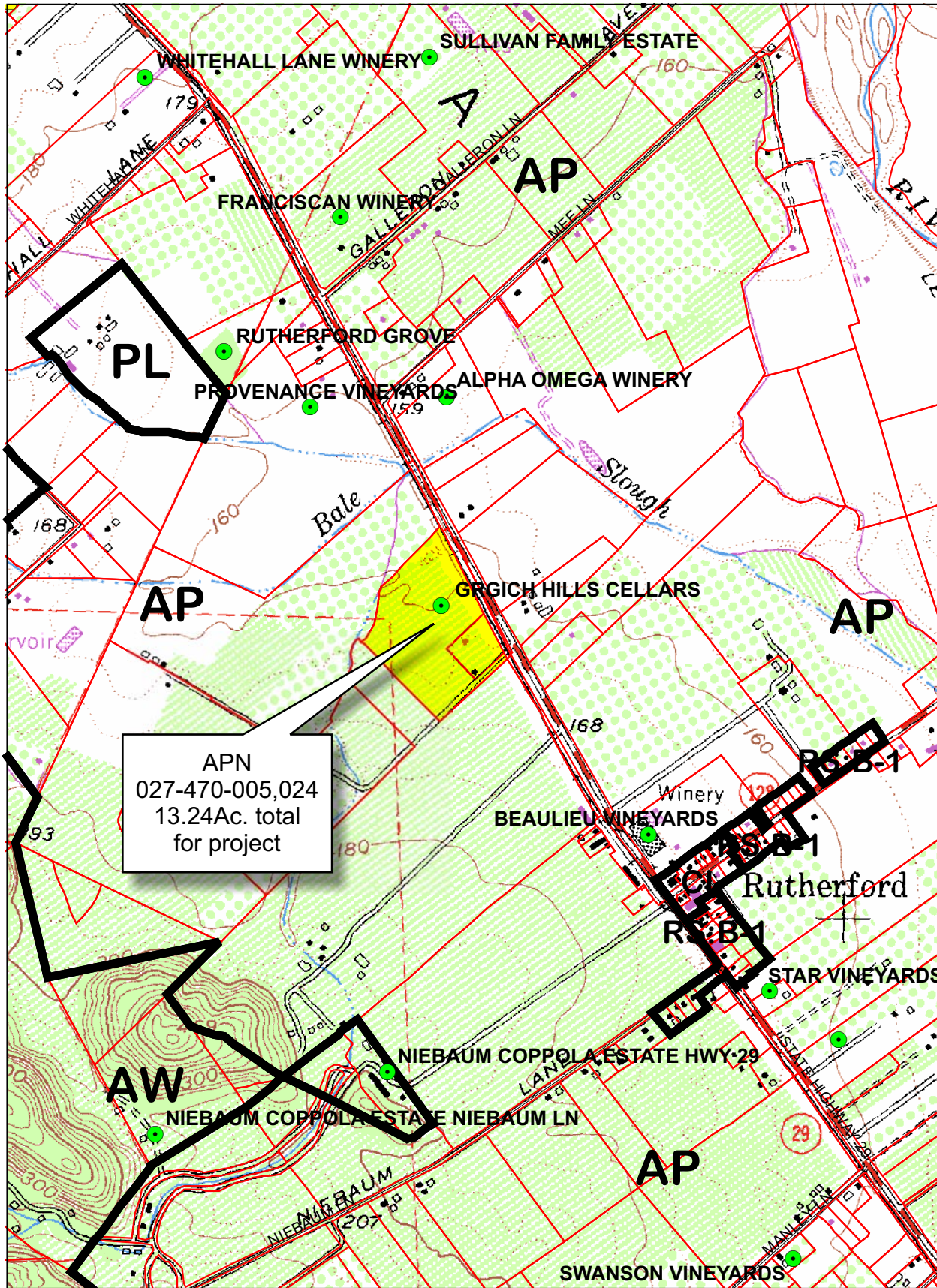
\* See Action Item AG/LU-114.1 regarding agriculturally zoned areas within these land use designations

APN  
027-470-005  
10-05-2009  
8C UP

SCALE IN MILES  
0 2



# GRGICH HILLS WINERY



APN  
027-470-005,024  
13.24Ac. total  
for project

## Legend

- Wineries in Vicinity
- Producing
- Approved
- Pending
- Zoning
- Parcels

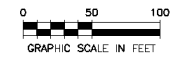
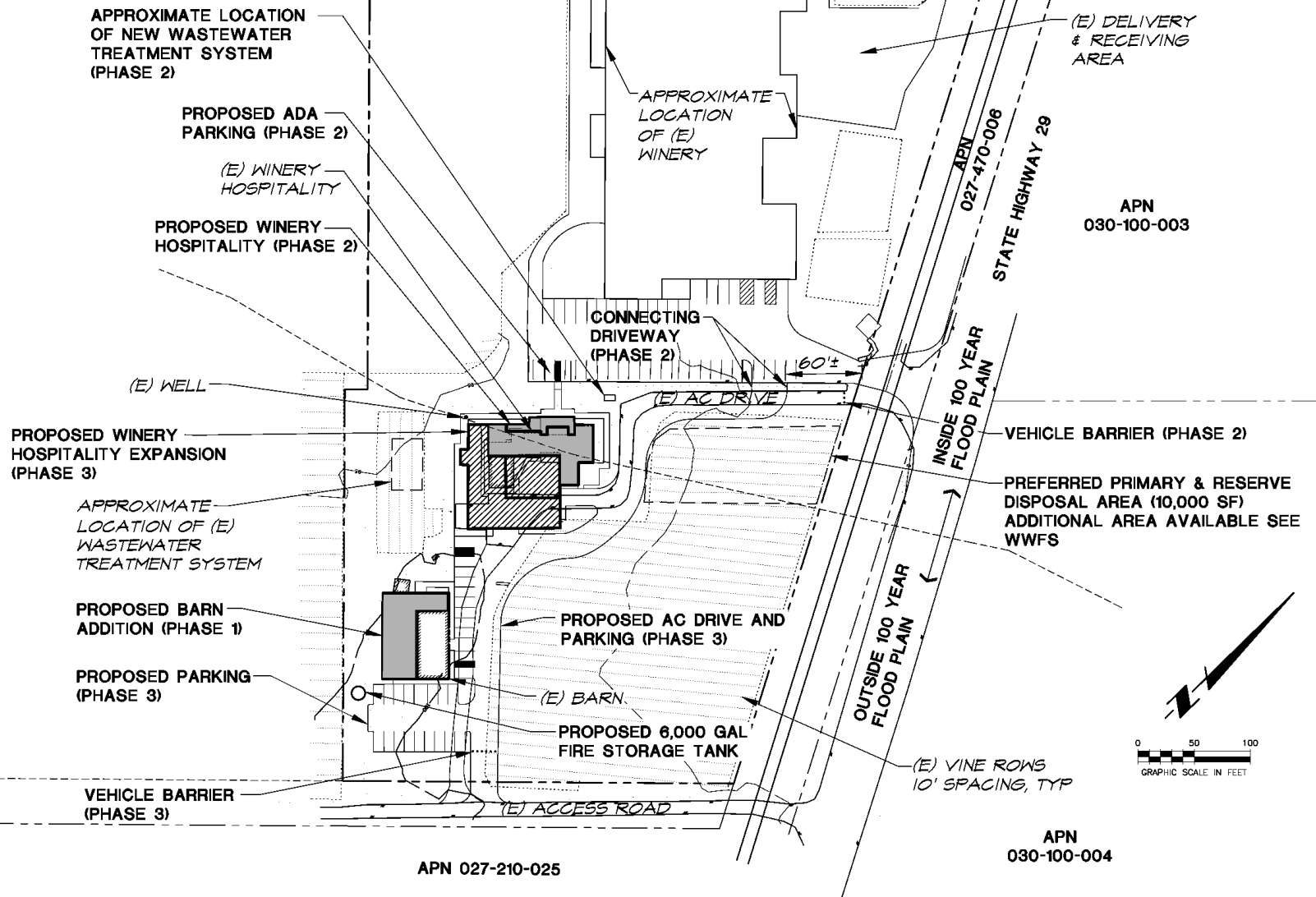
0 600 1,200 2,400 3,600 4,800 Feet

# GRGICH HILLS WINERY

## OWNER/APPLICANT:

VIOLET GRGICH  
1829 ST. HELENA HWY  
RUTHERFORD, CALIFORNIA

GRGICH HILLS  
WINERY PARCEL  
APN 027-470-024  
(13.24 ACRES)



OVERALL SITE PLAN



# GRGICH HILLS WINERY

## OWNER/APPLICANT:

VIOLET GRGICH  
1829 ST. HELENA HWY  
RUTHERFORD, CALIFORNIA

GRGICH HILLS  
WINERY PARCEL  
APN 027-470-024

(E) WINERY  
HOSPITALITY  
2898 SF

APPROXIMATE  
LOCATION OF  
(E) WINERY

(E) AC DRIVE

(E) AC DRIVE  
6100 SF

(E) PATHWAY  
771 SF

(E) STORAGE  
169 SF

(E) BARN  
1799 SF

(E) GRAVEL DRIVE  
3255 SF

(E) ACCESS ROAD

APN  
030-100-003

INSIDE 100 YEAR  
FLOOD PLAIN

OUTSIDE 100 YEAR  
FLOOD PLAIN

APN 030-100-004

STATE HIGHWAY 29

0 30 60  
GRAPHIC SCALE IN FEET

PRE-CONSTRUCTION  
HYDRO MAP

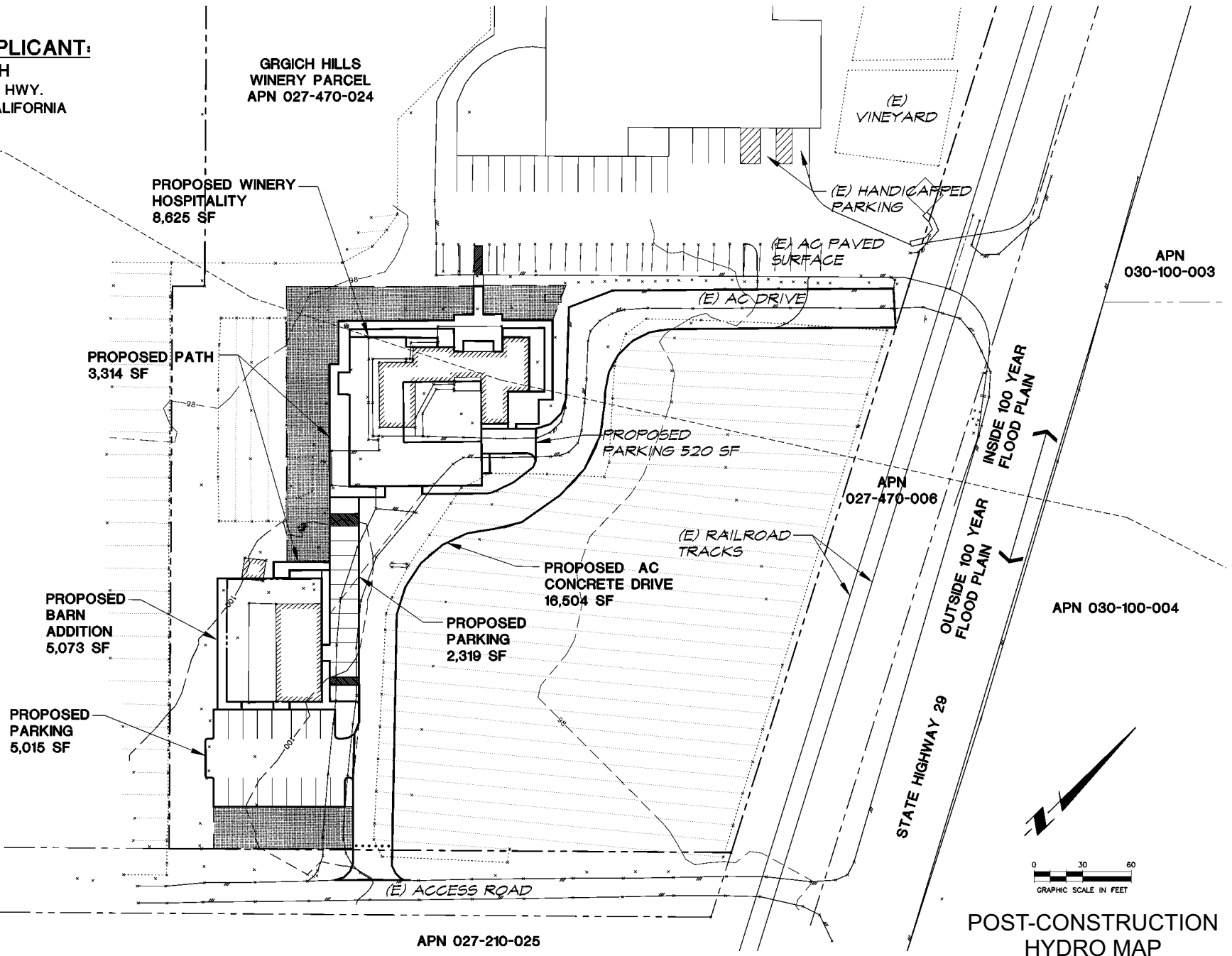
APN 027-210-025

# GRGICH HILLS WINERY

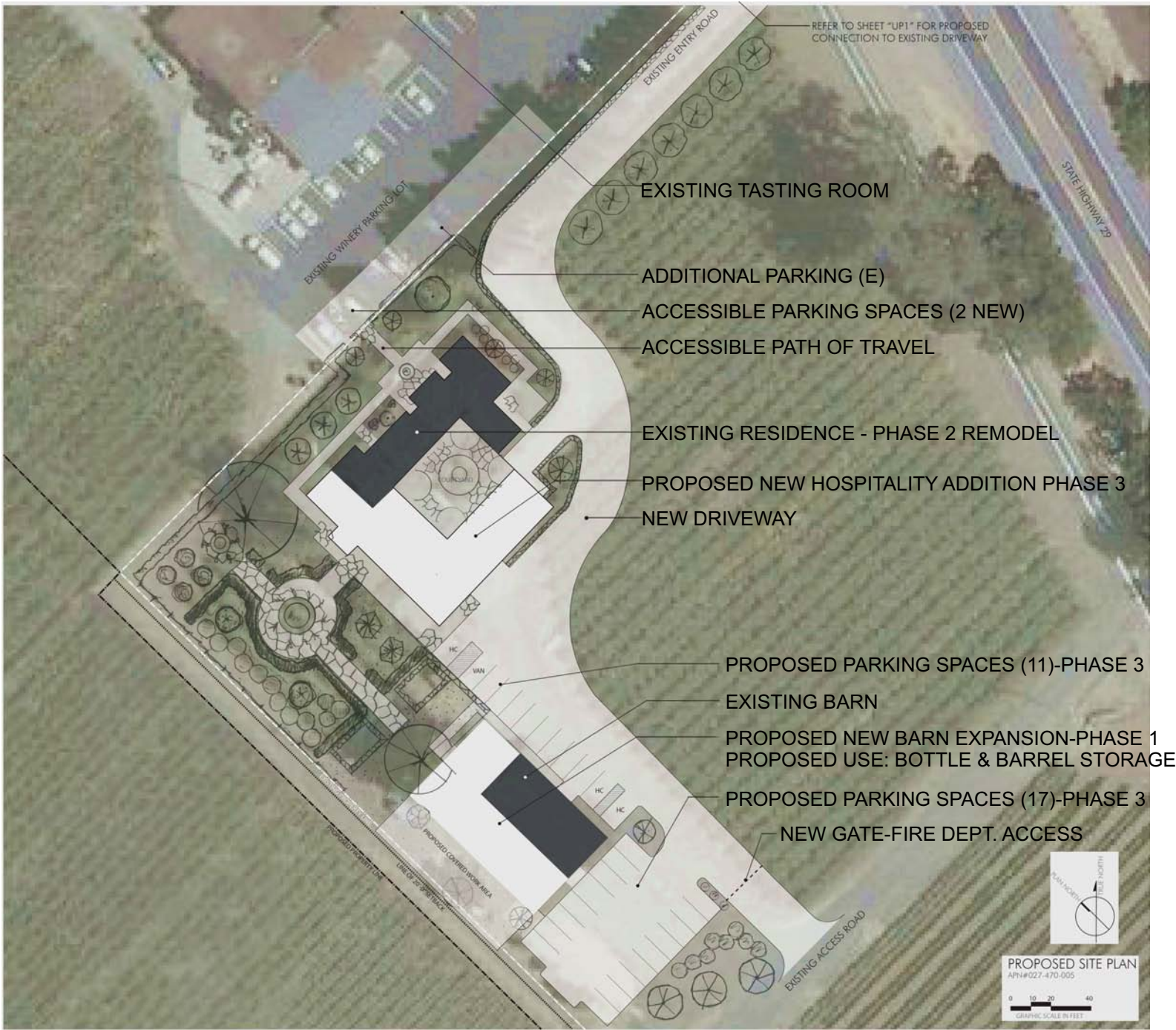
## OWNER/APPLICANT:

VIOLET GRGICH  
1829 ST. HELENA HWY.  
RUTHERFORD, CALIFORNIA

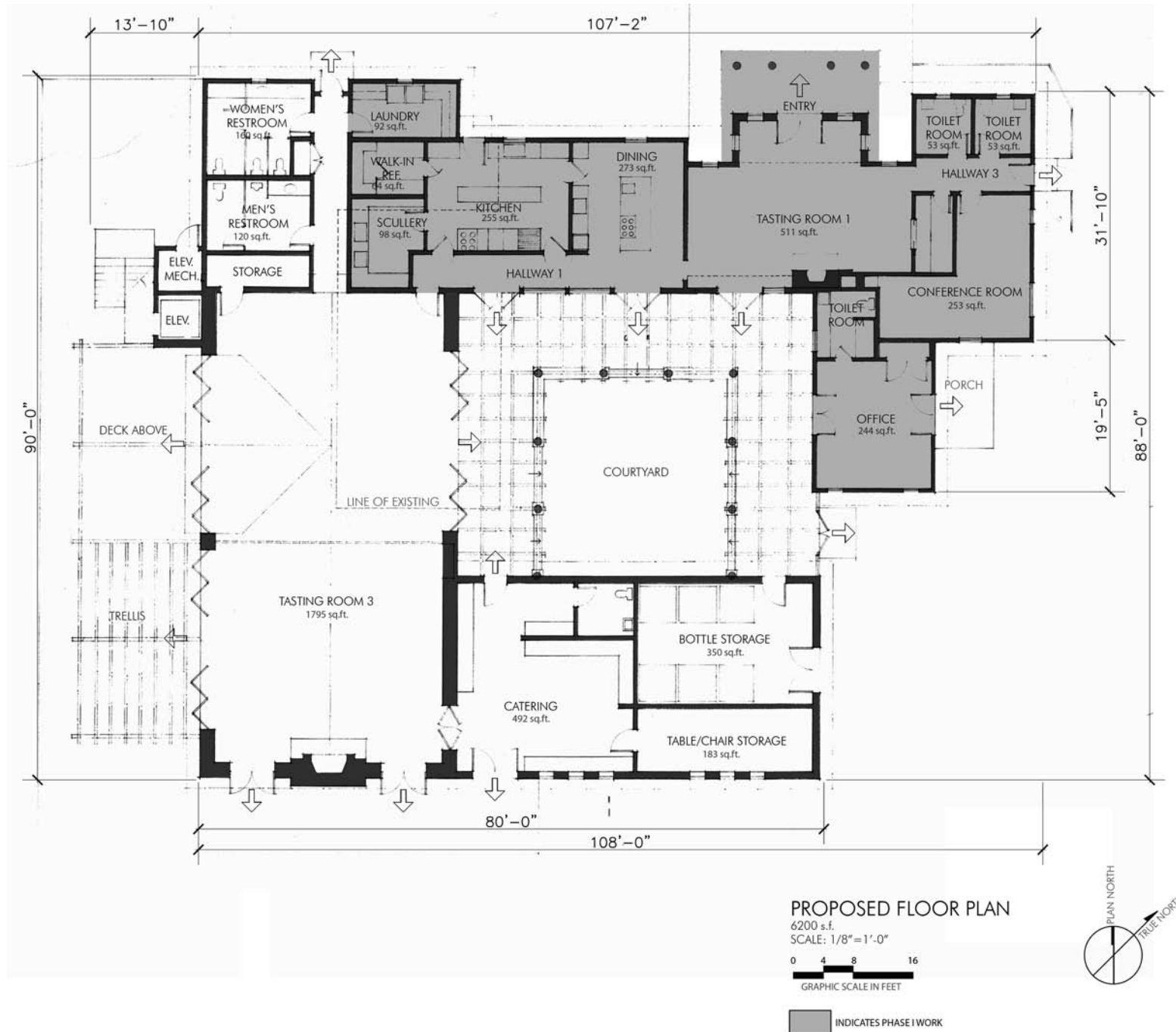
GRGICH HILLS  
WINERY PARCEL  
APN 027-470-024



# GRGICH HILLS WINERY



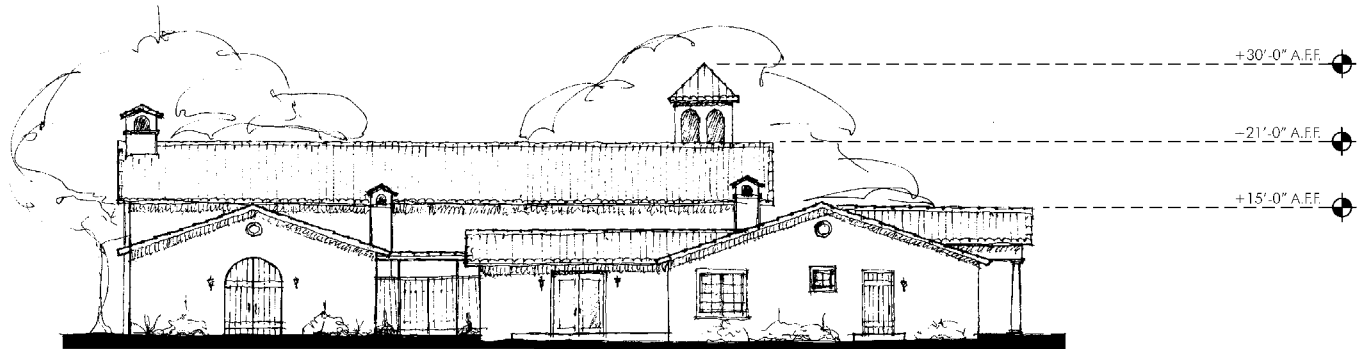
# GRGICH HILLS WINERY



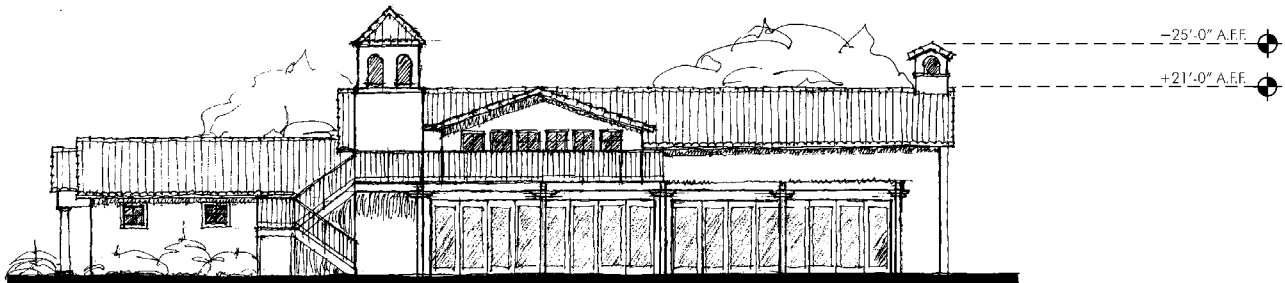
# GRGICH HILLS WINERY



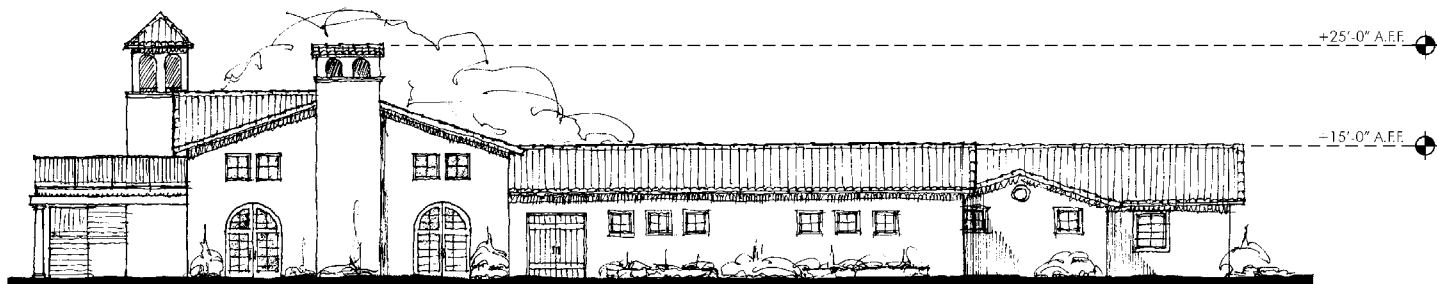
NORTH ELEVATION  
SCALE: 1/8"=1'-0"



EAST ELEVATION  
SCALE: 1/8"=1'-0"



WEST ELEVATION  
SCALE: 1/8"=1'-0"

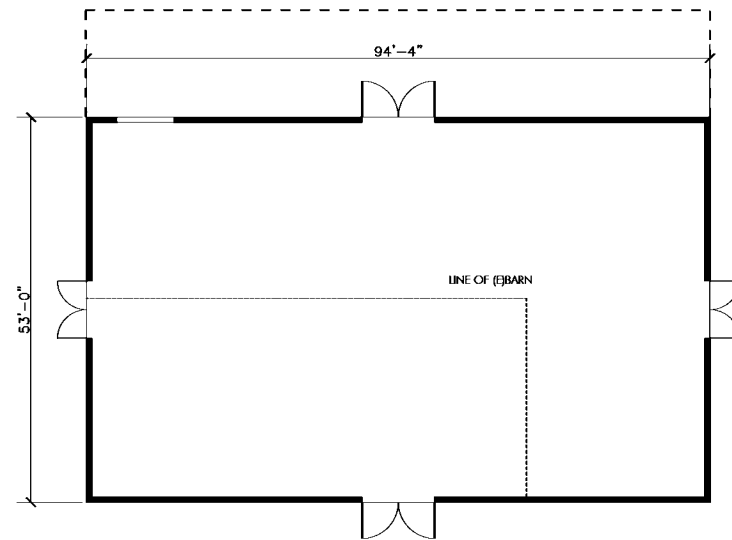
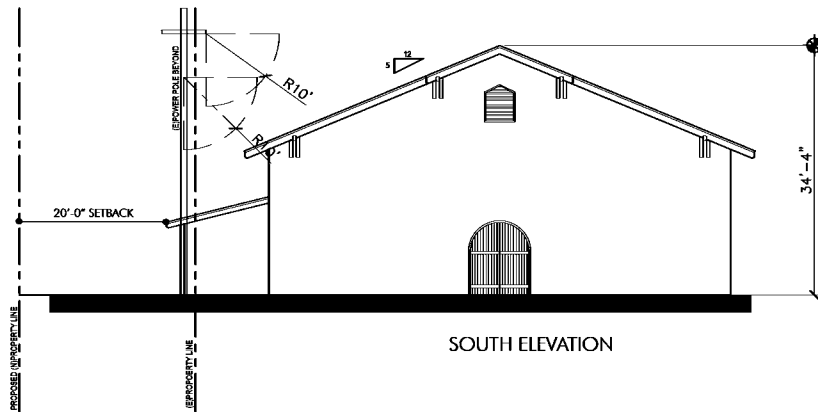
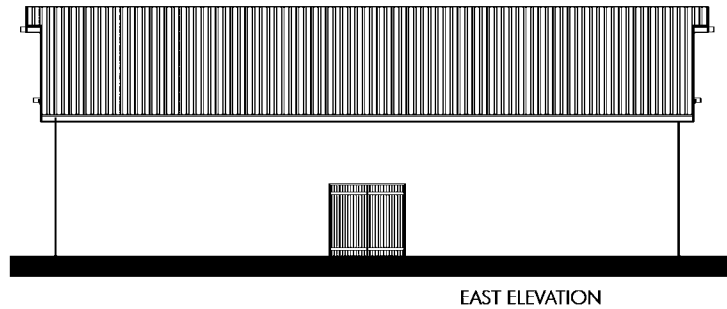
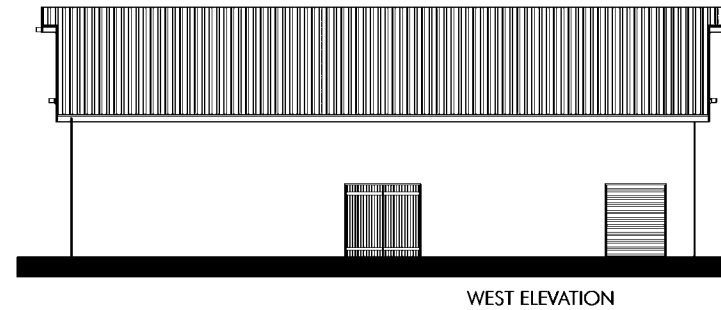
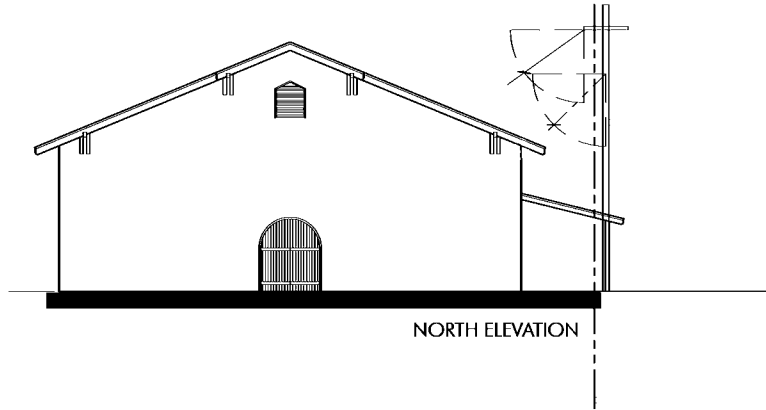


SOUTH ELEVATION

0 4 8 16  
GRAPHIC SCALE IN FEET



# GRGICH HILLS WINERY



BARN FLOOR PLAN  
PROPOSED USE: Bottle and Barrel Storage  
5000 s.f. TOTAL

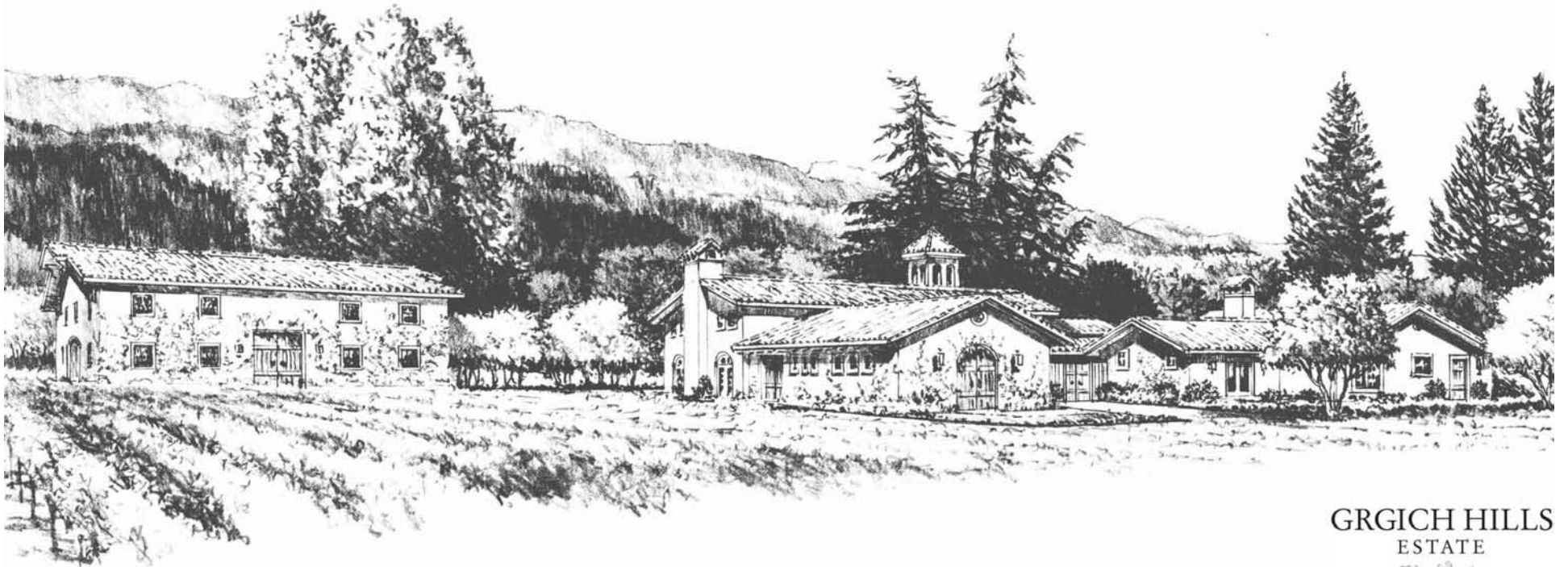
0 4 8 16  
GRAPHIC SCALE IN FEET

PROPOSED MATERIALS:

Exterior:  
Cement Plaster Finish,  
Color: To Match winery.  
Corrugated Metal  
Color: Cor-Ten Steel



# GRGICH HILLS WINERY



GRGICH HILLS  
ESTATE



NAPA VALLEY

# GRGICH HILLS WINERY





# GRGICH HILLS WINERY





GRGICH HILLS WINERY





# GRGICH HILLS WINERY

