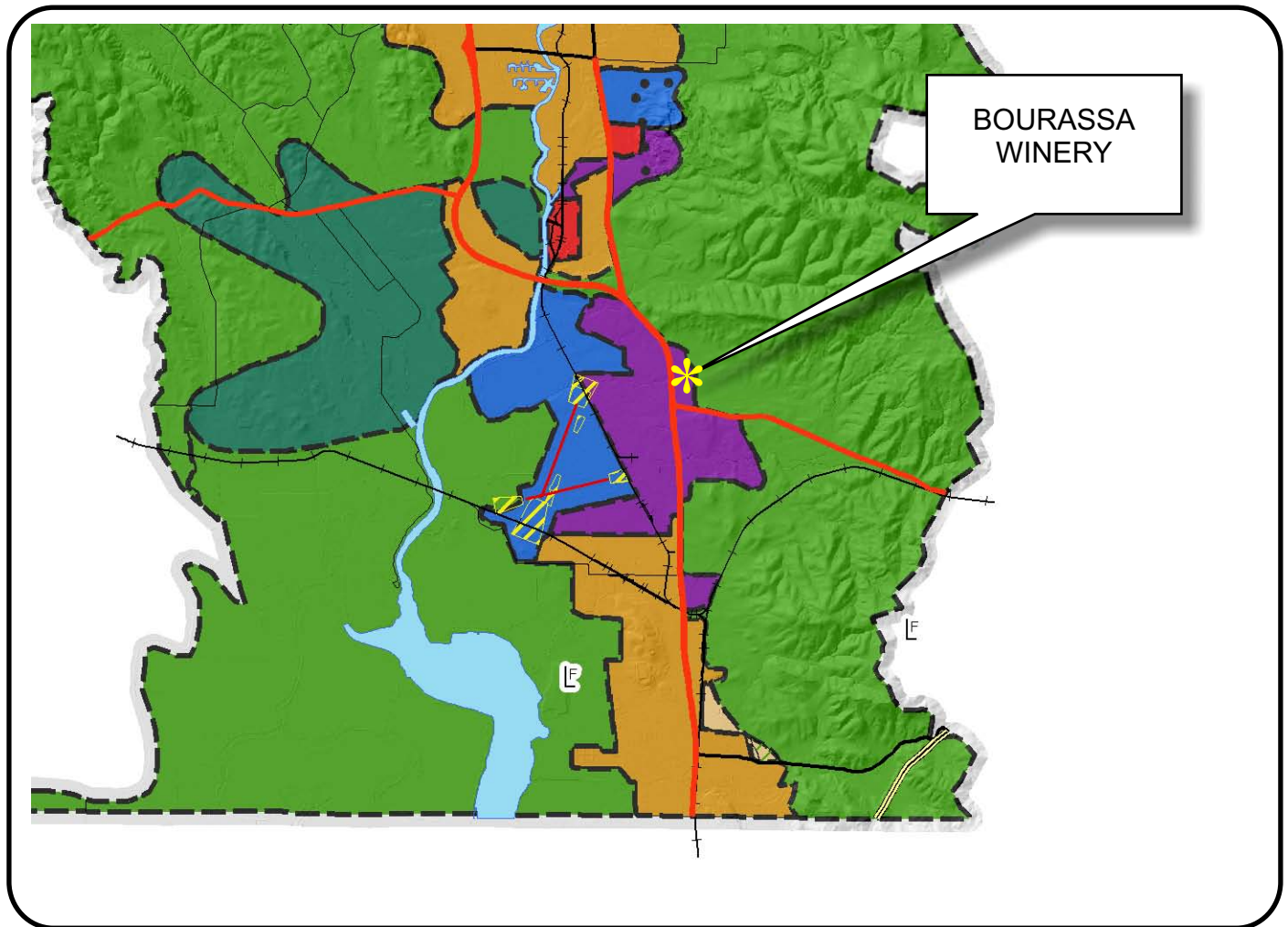


NAPA COUNTY LAND USE PLAN 2008 - 2030



LEGEND

URBANIZED OR NON-AGRICULTURAL

- Cities
- Urban Residential *
- Rural Residential *
- Industrial
- Public-Institutional
- Study Area

OPEN SPACE

- Agriculture, Watershed & Open Space
- Agricultural Resource

TRANSPORTATION

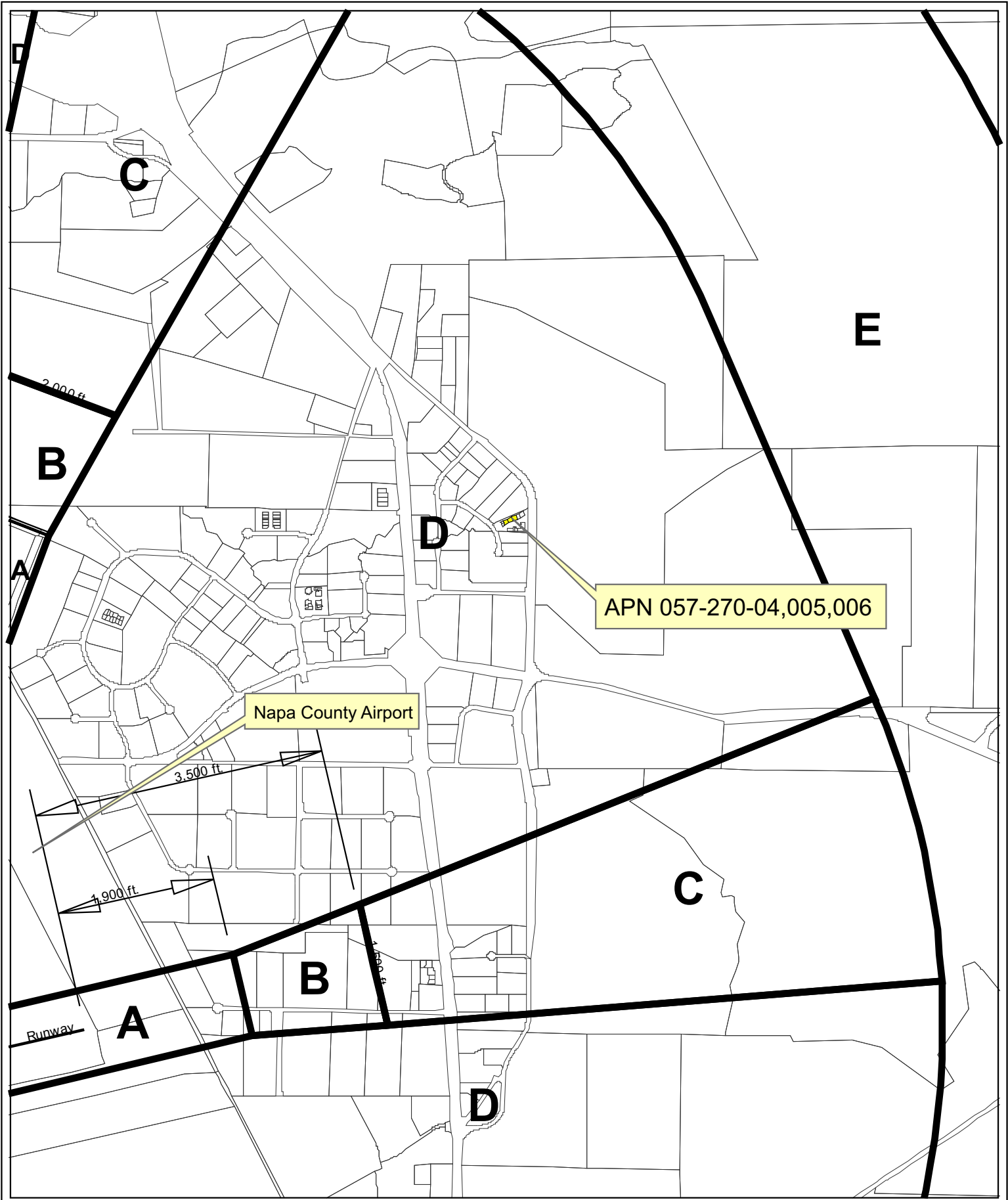
- Mineral Resource
- Railroad
- Limited Access Highway
- Major Road
- Secondary Road
- Airport
- Airport Clear Zone
- Landfill - General Plan

* See Action Item AG/LU-114.1 regarding agriculturally zoned areas within these land use designations

APN
057-270-004
05-27-2009
3C UP

SCALE IN MILES
0 2





Horizontal Datum: NAD 83,
CA State Plane Coordinates,
Zone II, feet



Disclaimer: This map was prepared for informational
purposes only. No liability is assumed for the accuracy
of the data delineated hereon.

Compatibility Plan

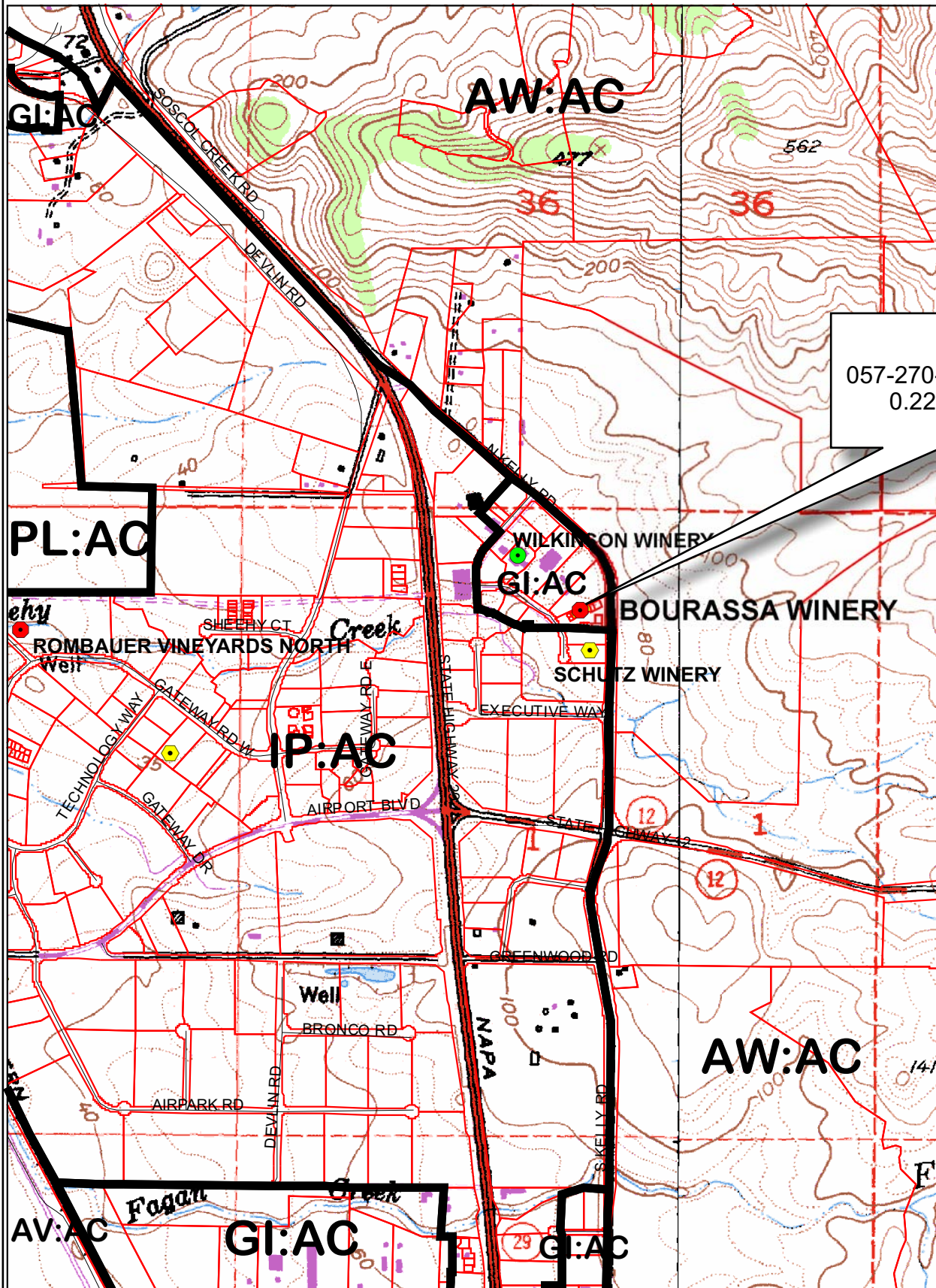
Napa County Airport



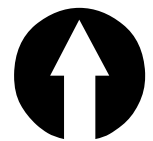
0 387.5 775 1,550 '

Napa County Conservation Division - 05/2009

BOURASSA WINERY



APN
057-270-004,005,006
0.22 Ac. Total



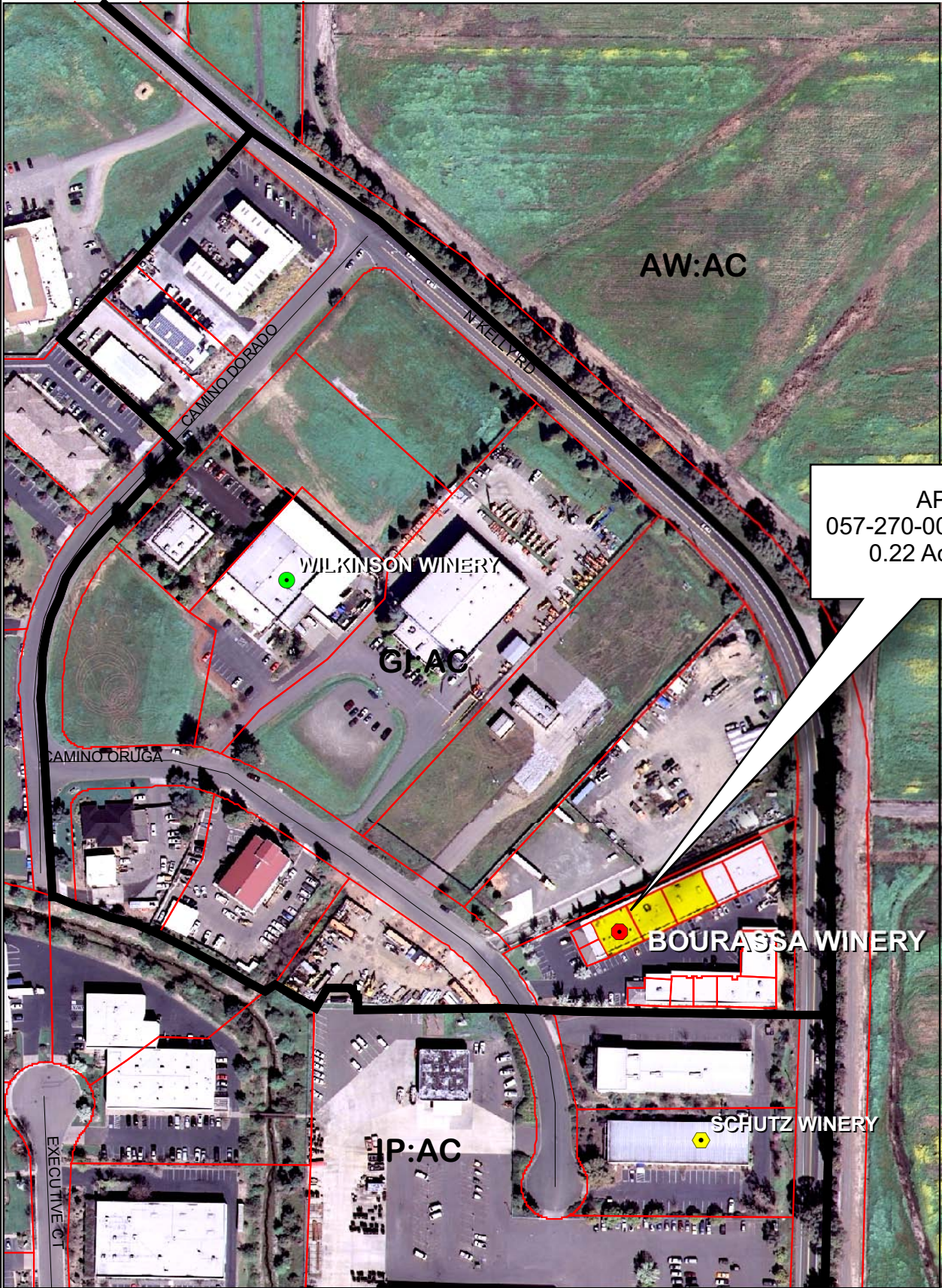
Legend

Wineries in Vicinity

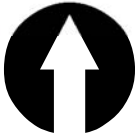
- Producing
- Approved
- Pending
- Zoning
- Parcels

0 600 1,200 2,400 3,600 4,800 Feet

BOURASSA WINERY



APN
057-270-004,005,006
0.22 Ac. Total

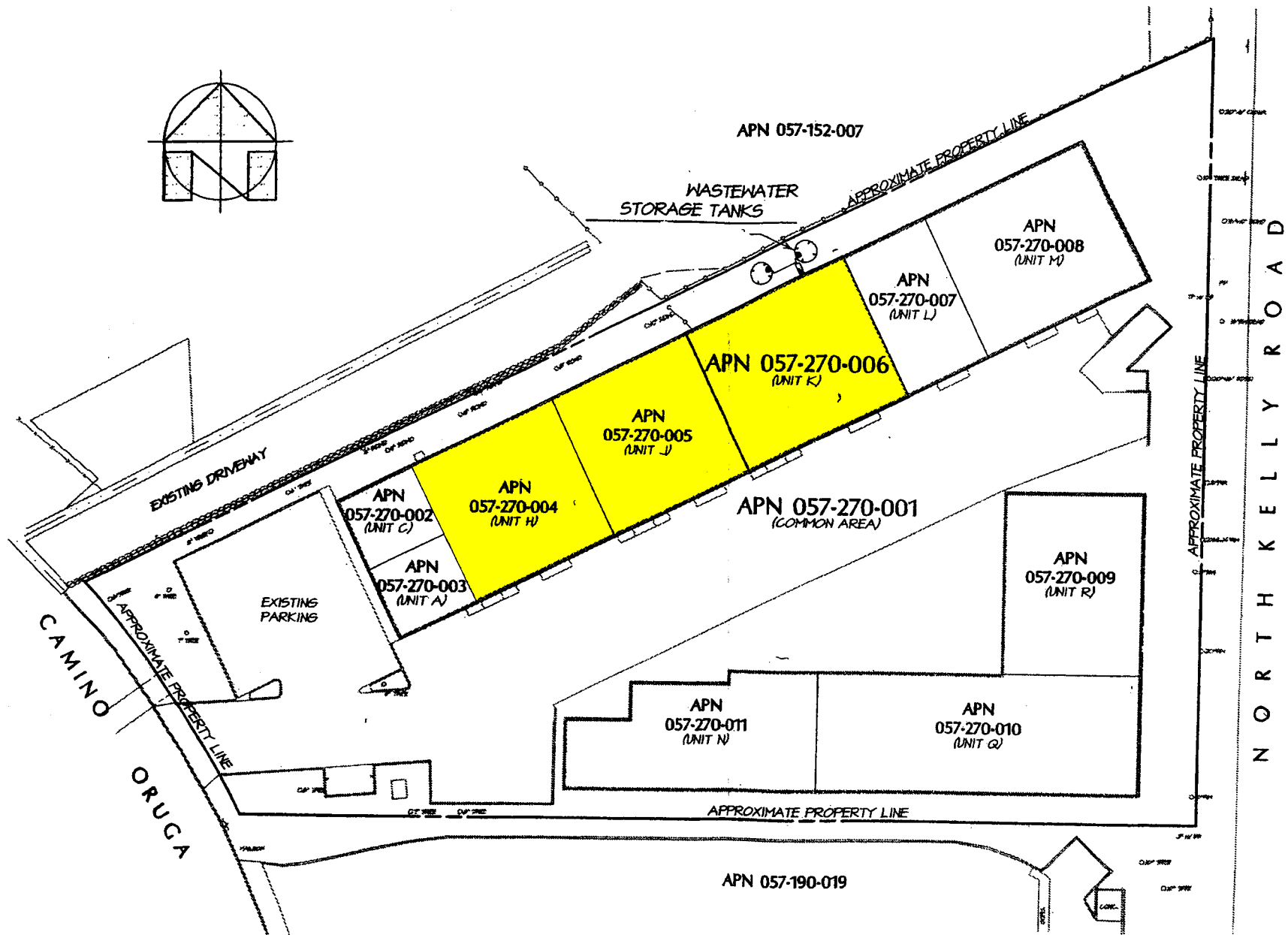


Legend

- Wineries in Vicinity
- Producing
 - Approved
 - Pending
 - Zoning
 - Parcels

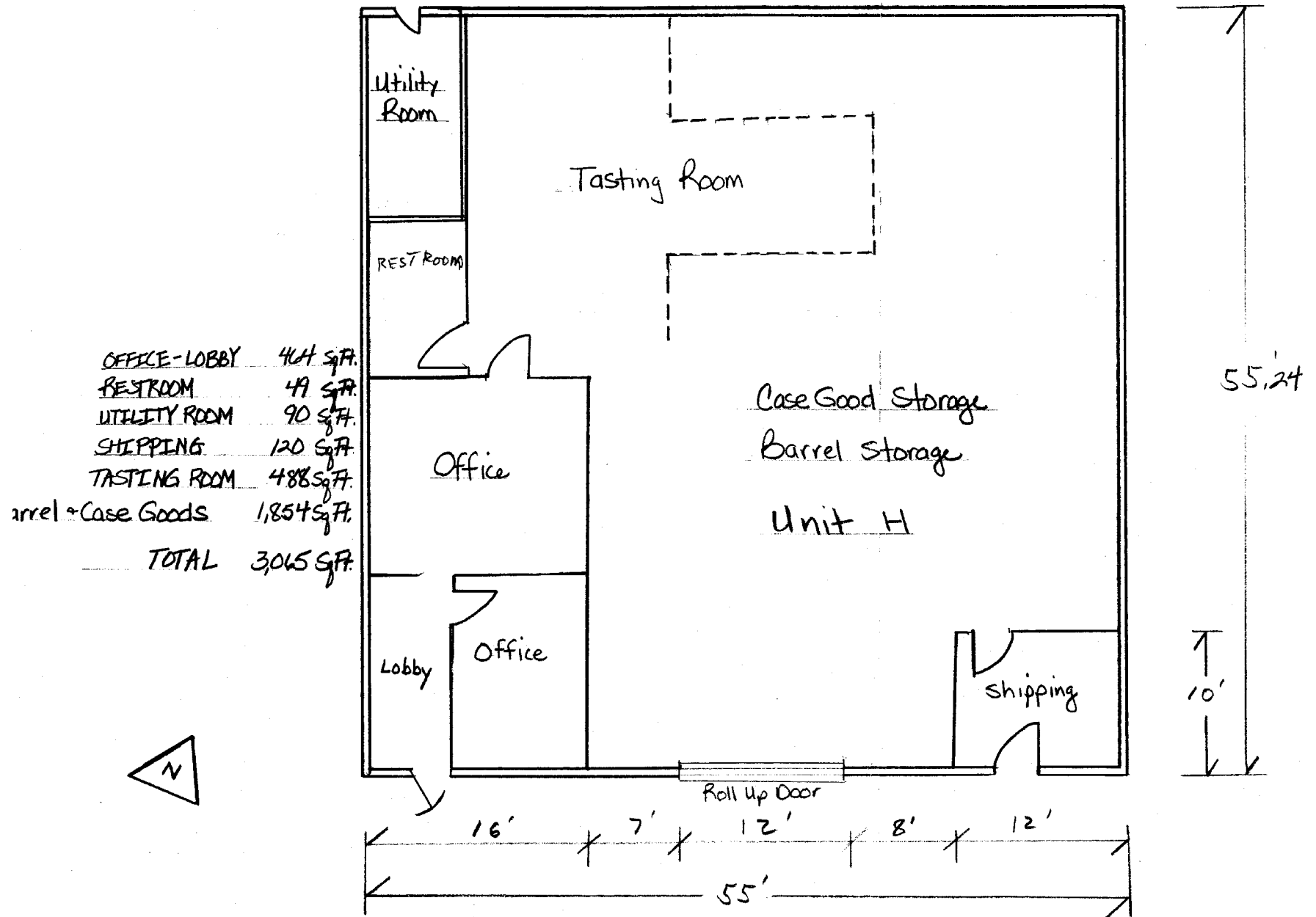
0 105 210 420 630 840 Feet

BOURASSA WINERY

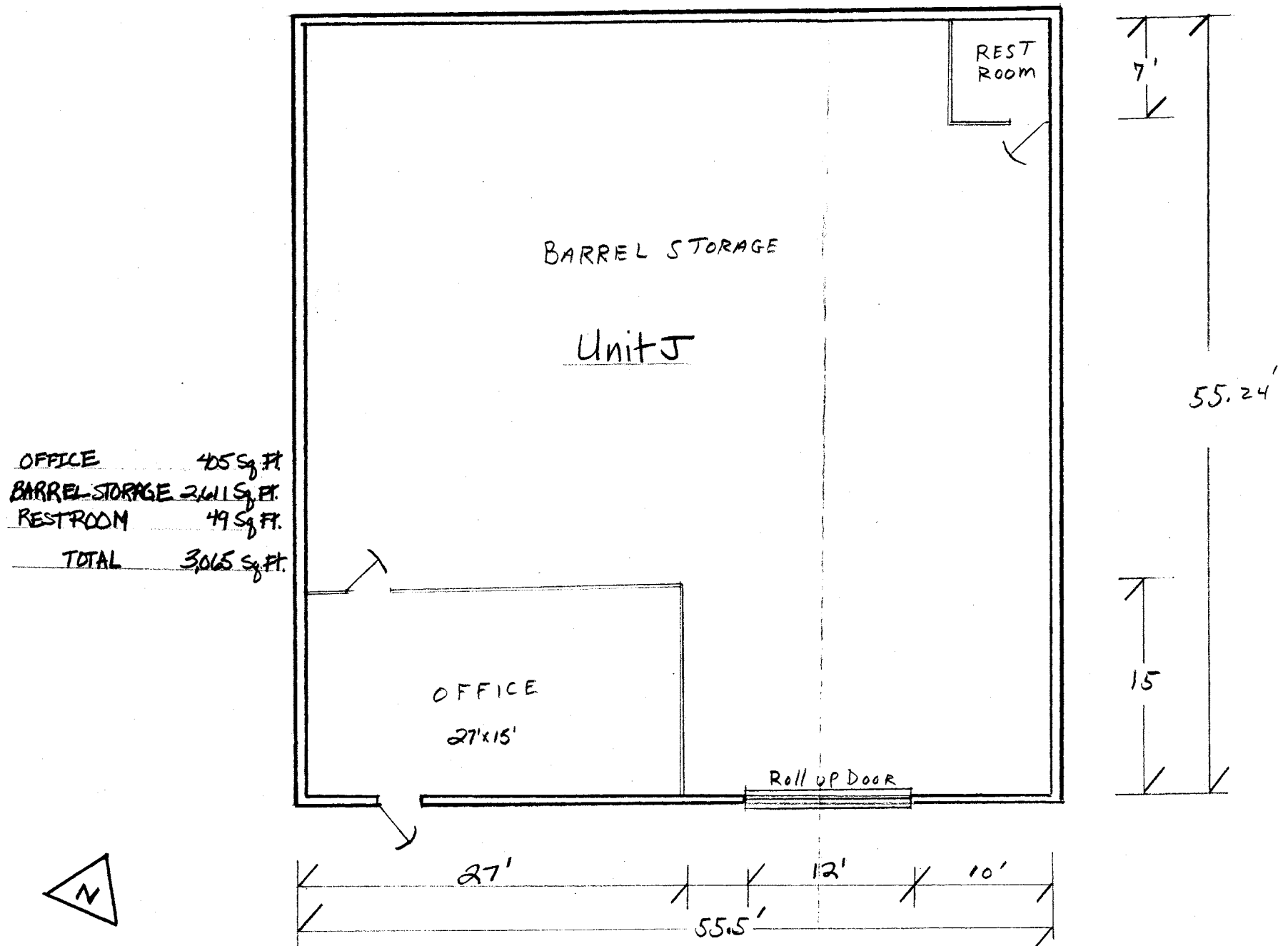


OVERALL SITE PLAN

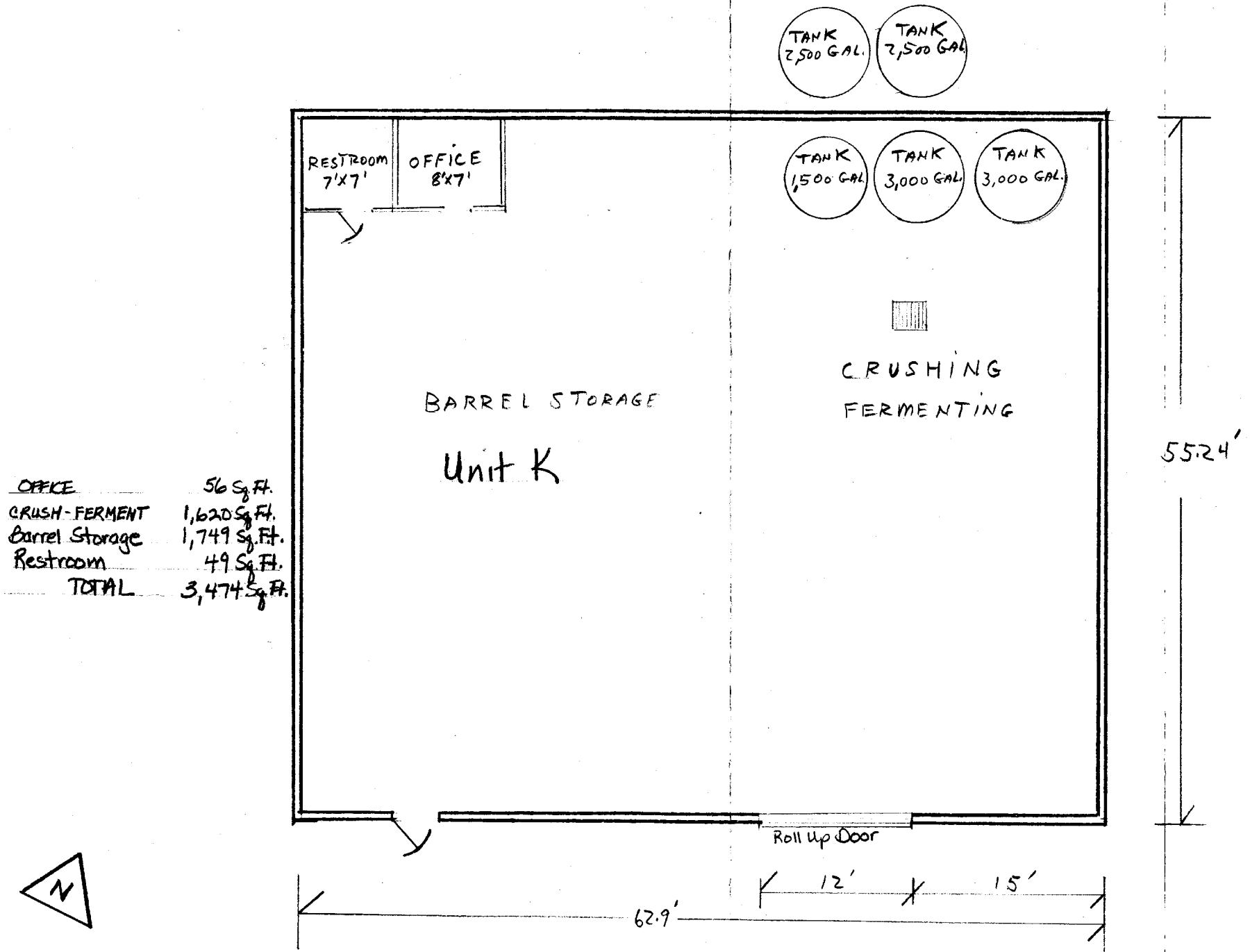
BOURASSA WINERY



BOURASSA WINERY



BOURASSA WINERY



The architectural drawings show three building elevations:

- BLDG. NO. 1 - EAST:** A long, low profile with a gabled roof on the left side. Annotations specify "MONKEY CONG. ROOF TILE HERITAGE SHADE COLOR OR EQUAL TYPICAL" for the roof and "INTEGRAL STUCCO ACCENT COLOR SAND COLOR CHESTNUT OR TOBACCO" for the upper portion of the wall.
- BLDG. NO. 1 - NORTH:** A long elevation showing multiple windows and doors. It includes annotations for "BATCH", "FRONT WALL PARAPET LINE", "REAR AND END WALL PARAPET LINE", and "1 1/2\" FRY REDLET OR EQUAL".
- BLDG. NO. 2 - EAST:** A smaller building with a gabled roof. Annotations specify "INTEGRAL STUCCO ACCENT COLOR SAND COLOR CHESTNUT OR TOBACCO" and "REST OF BUILDING IS BASIC COLOR COLOR SANDSTONE".

Additional notes include "INSTALL 3 COAT SAND FINISH INTEGRAL COLOR STUCCO SEE COLORS ABOVE TYP." and "PLATE LINE".

ELEVATIONS

05-27-2009 3C UP
Napa County Conservation
Development and Planning Department
Bourassa_Winery_up1.cdr

BOURASSA WINERY



BOURASSA WINERY



BOURASSA WINERY

