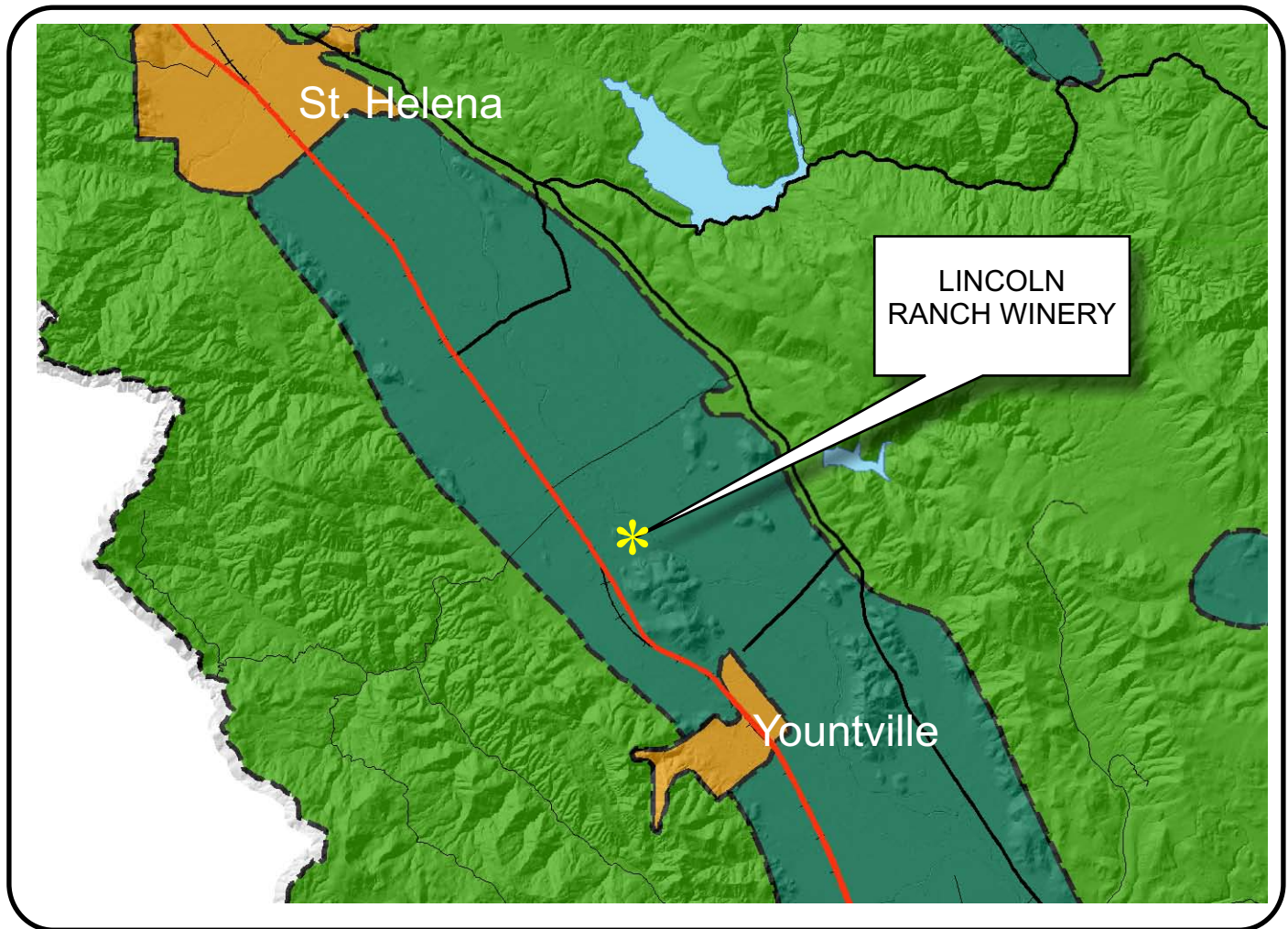








# NAPA COUNTY LAND USE PLAN 2008 - 2030





## LEGEND


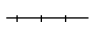




### URBANIZED OR NON-AGRICULTURAL

-  Cities
-  Urban Residential \*
-  Rural Residential \*
-  Industrial
-  Public-Institutional
-  Study Area

### OPEN SPACE

-  Agriculture, Watershed & Open Space
-  Agricultural Resource

### TRANSPORTATION

-  Mineral Resource
-  Railroad
-  Limited Access Highway
-  Major Road
-  Secondary Road
-  Airport
-  Airport Clear Zone
-  Landfill - General Plan

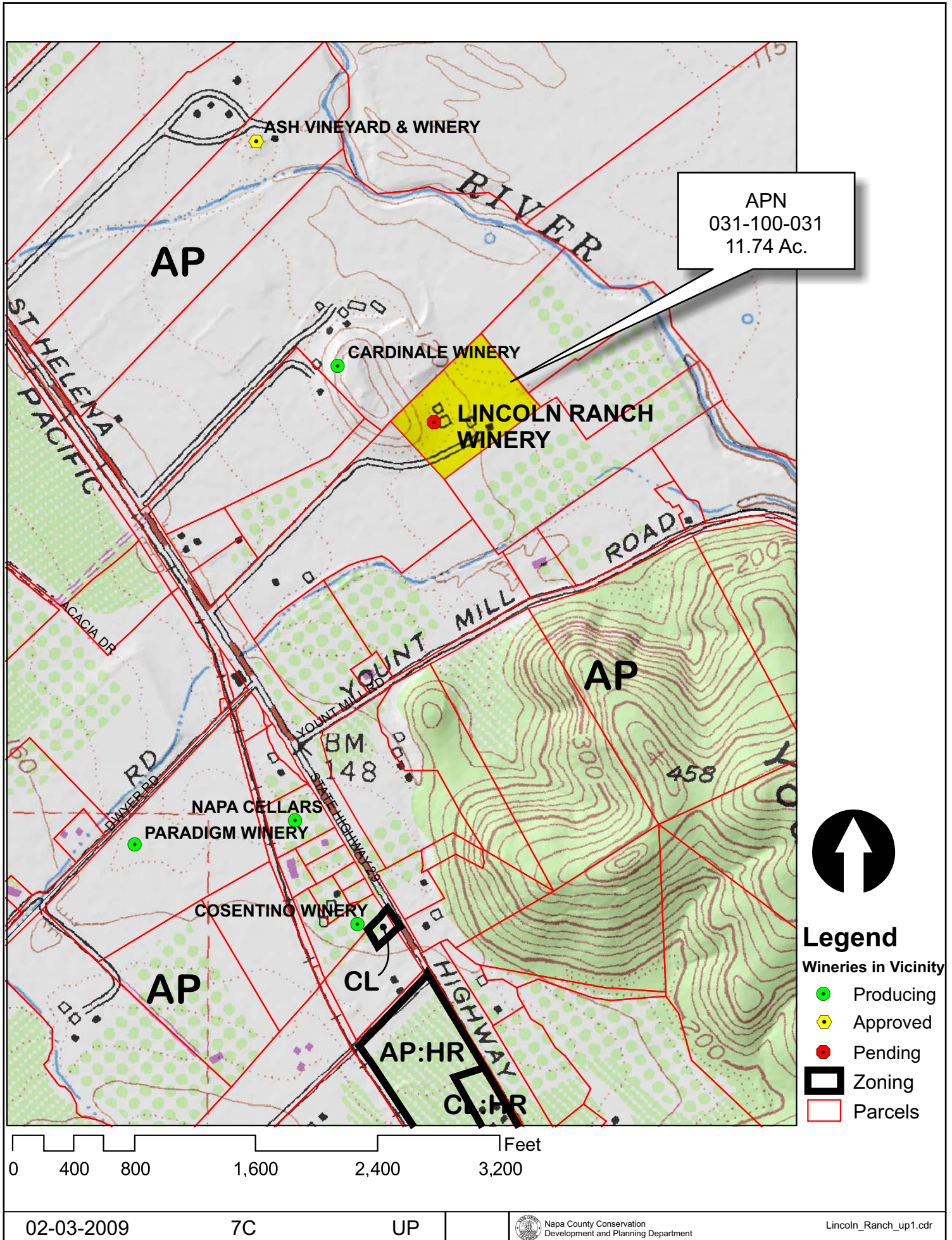
\* See Action Item AG/LU-114.1 regarding agriculturally zoned areas within these land use designations

APN  
031-100-031  
02-03-2009  
7C UP

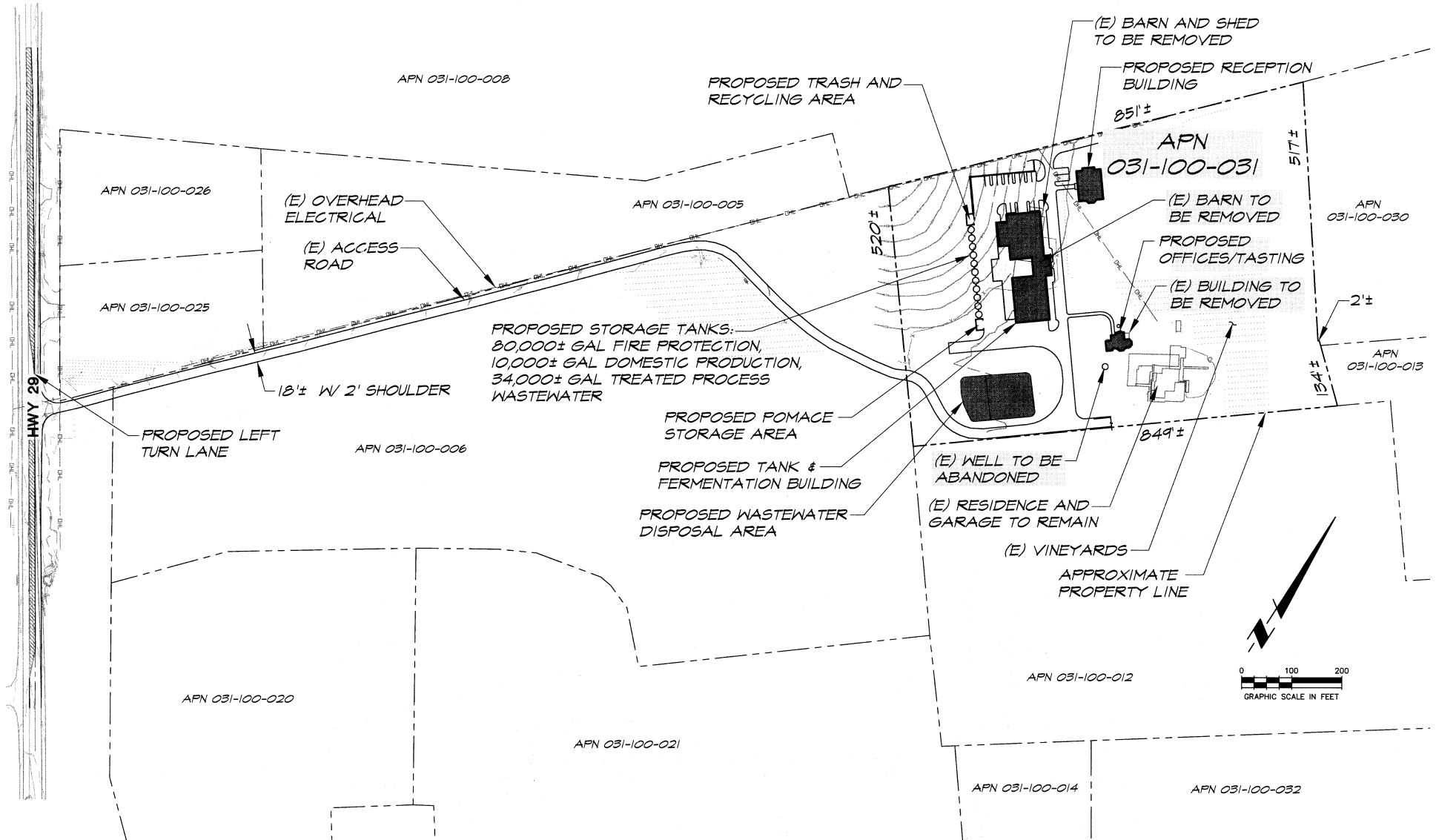
SCALE IN MILES  
0 2



# LINCOLN RANCH WINERY

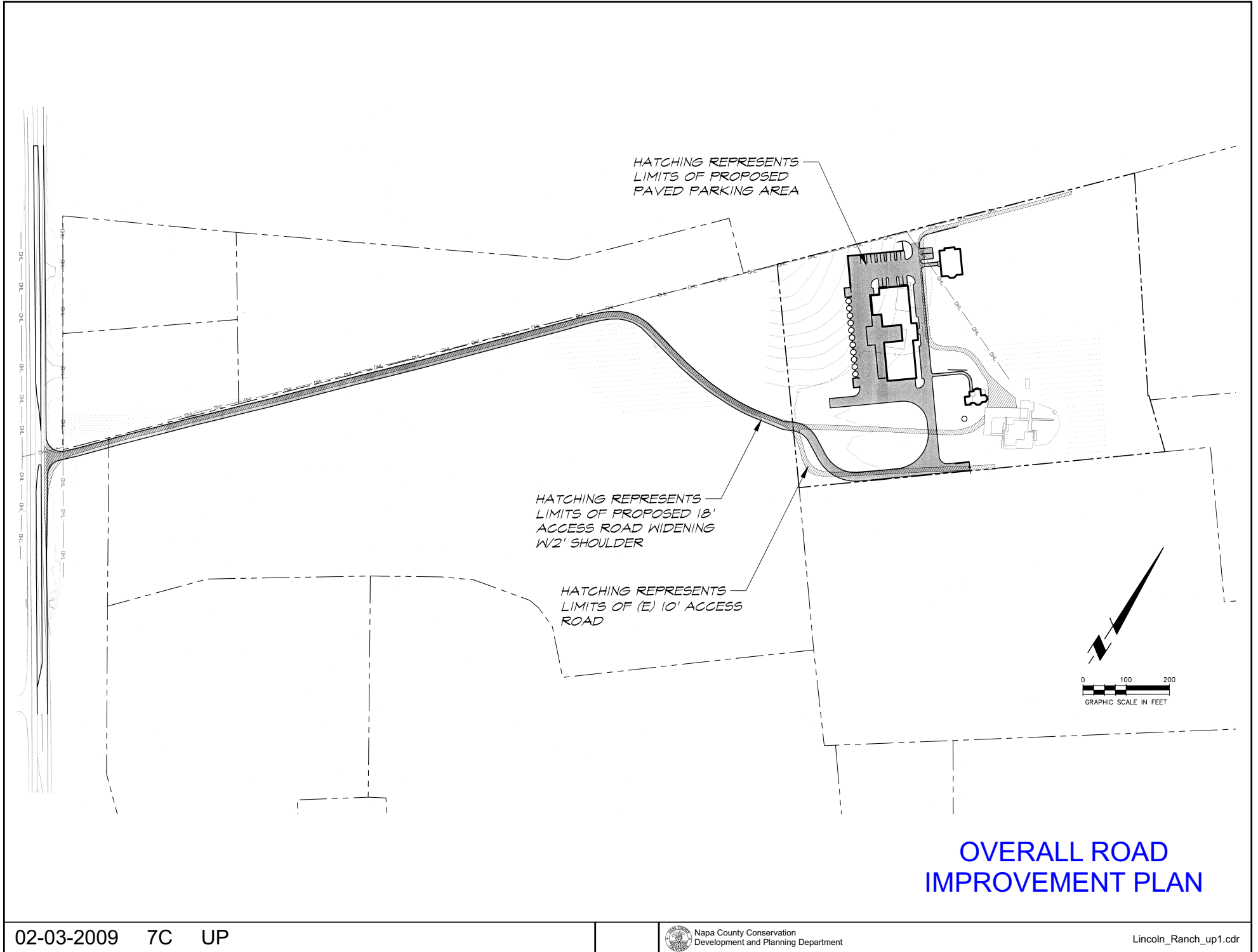


# LINCOLN RANCH WINERY

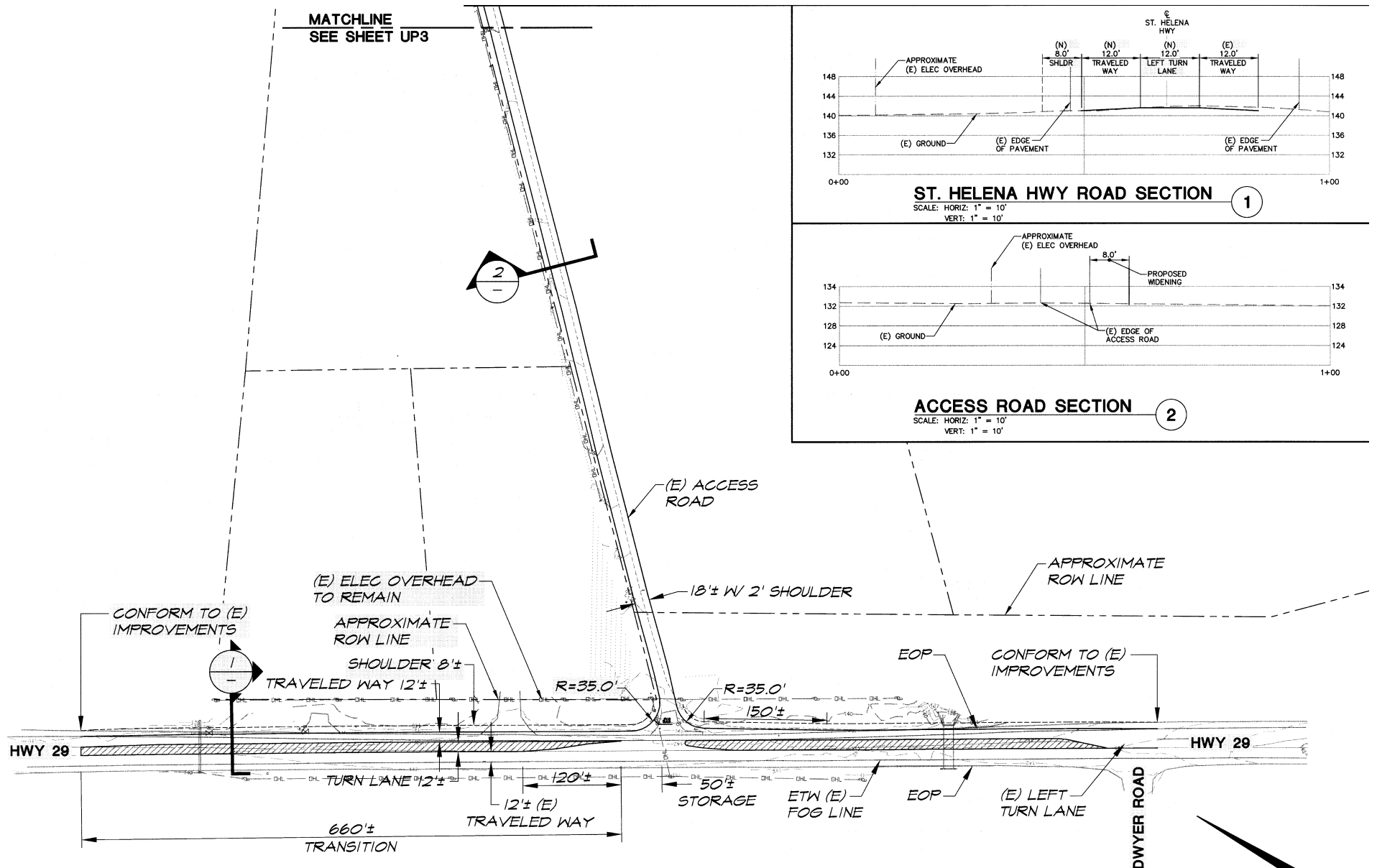


OVERALL SITE PLAN

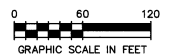
# LINCOLN RANCH WINERY



# LINCOLN RANCH WINERY

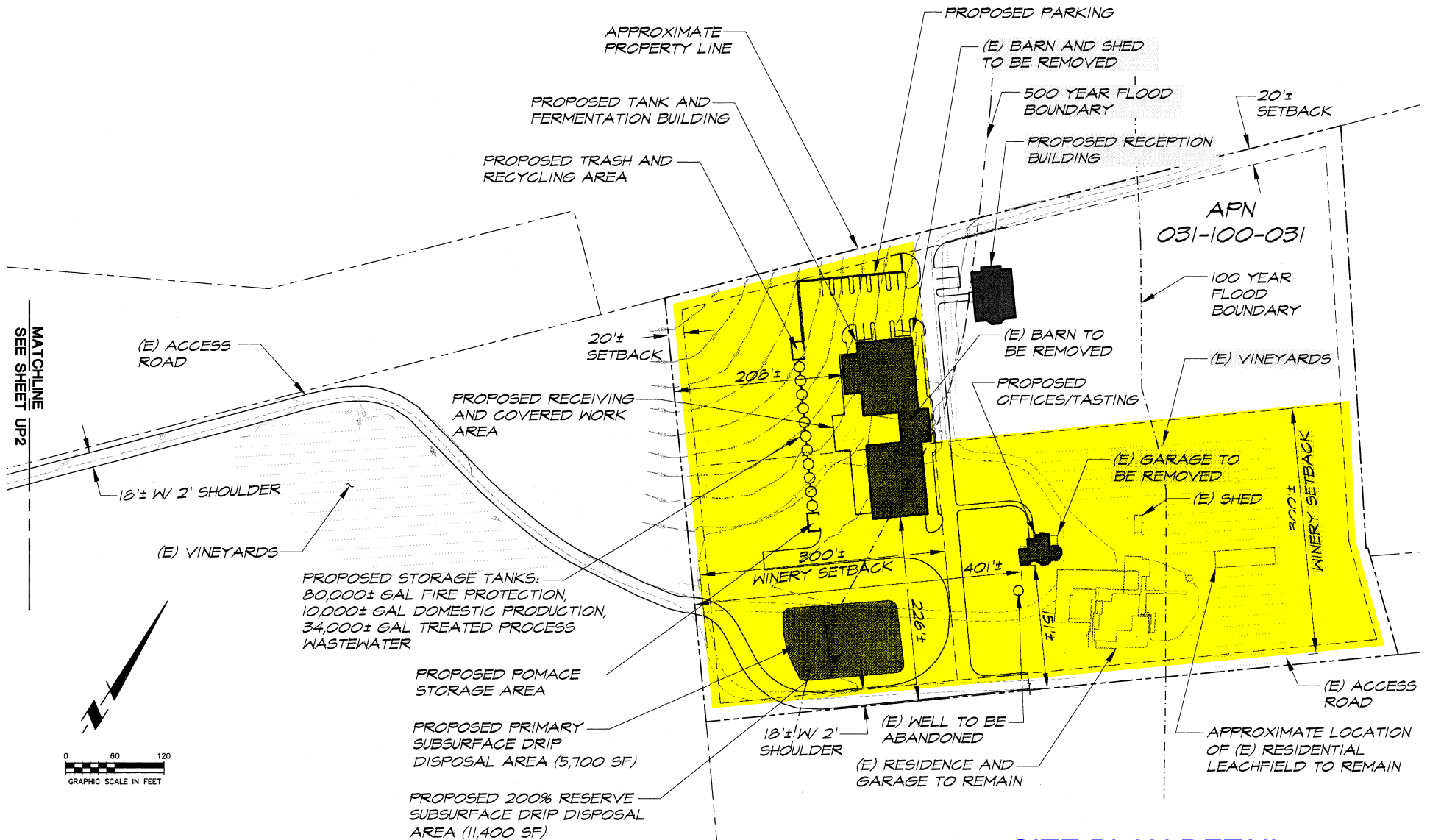


## LEFT TURN ACCESS PLAN



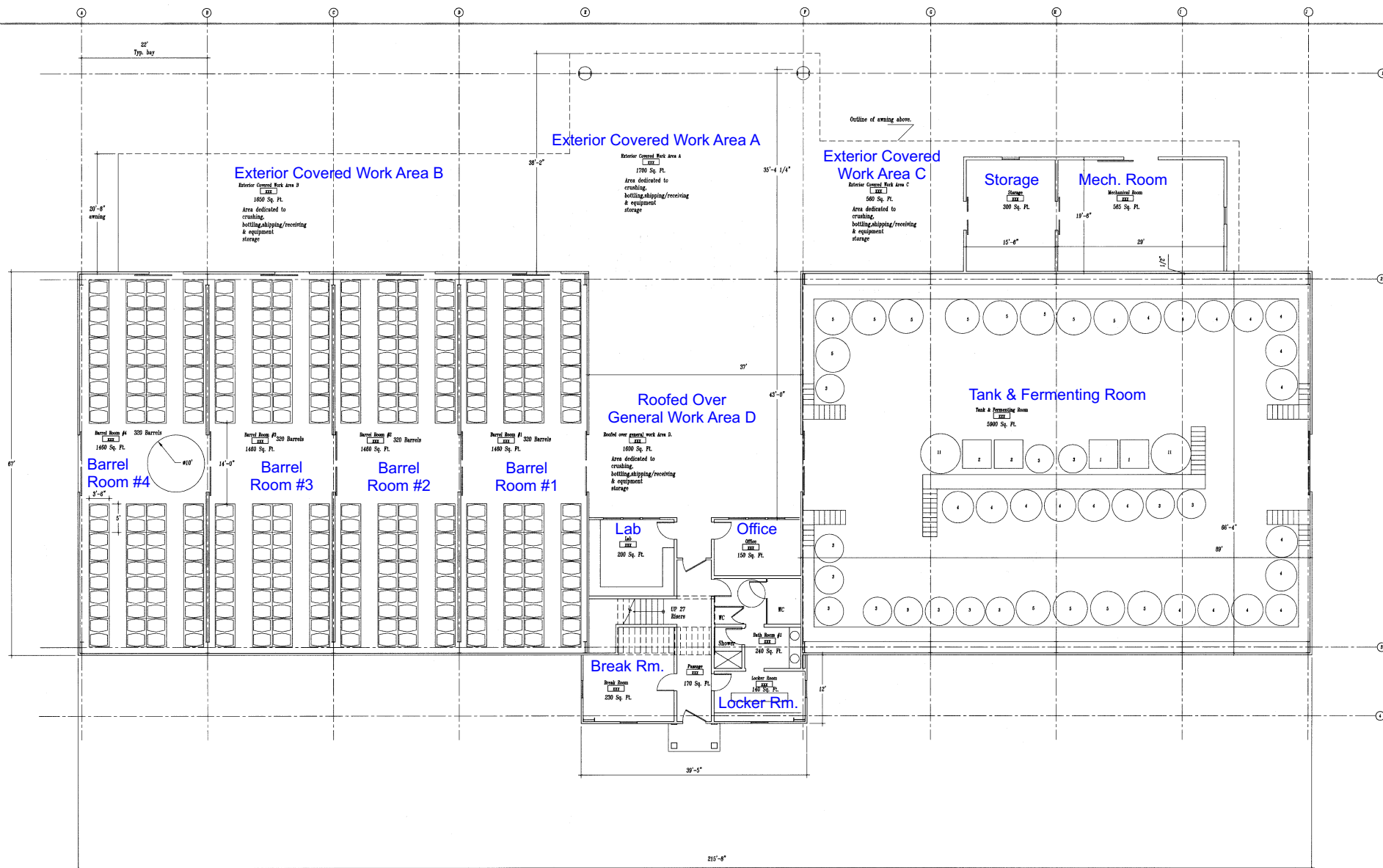
# LINCOLN RANCH WINERY

= Area within winery setback



## SITE PLAN DETAIL

# LINCOLN RANCH WINERY

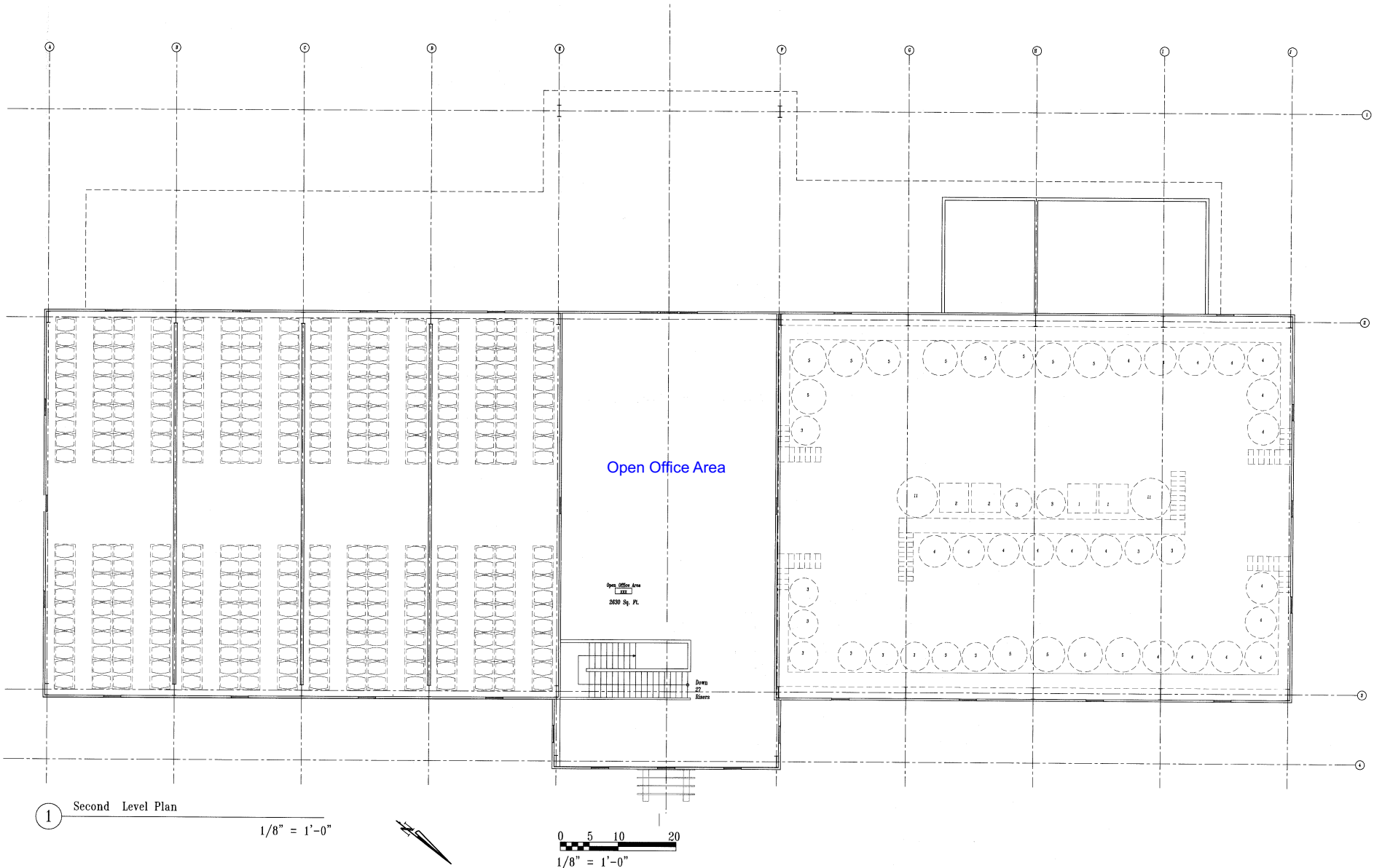


1 Ground Level Plan  
 1/8" = 1'-0"

0 5 10 20  
 1/8" = 1'-0"

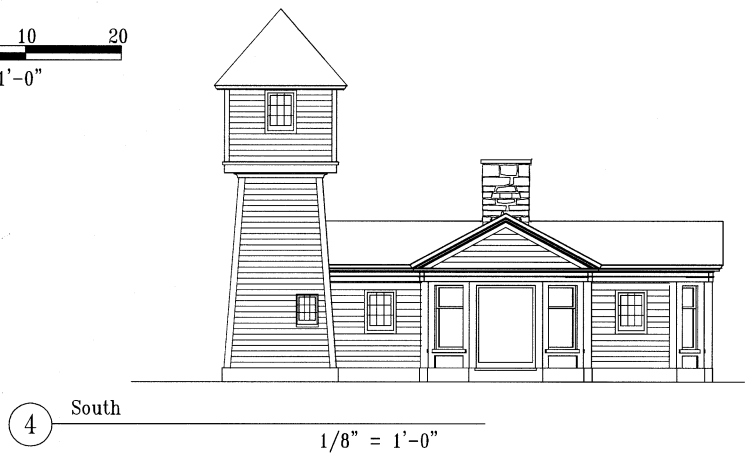
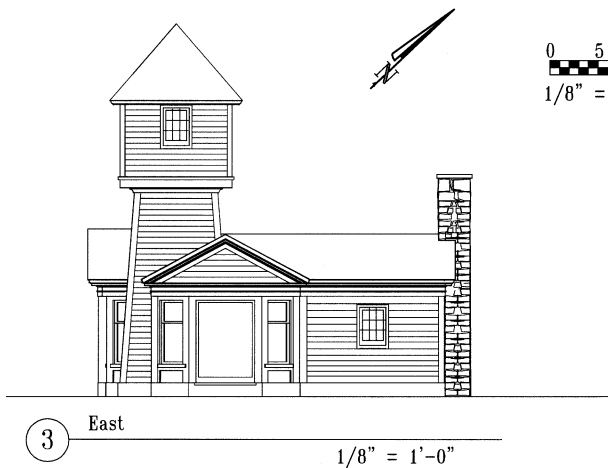
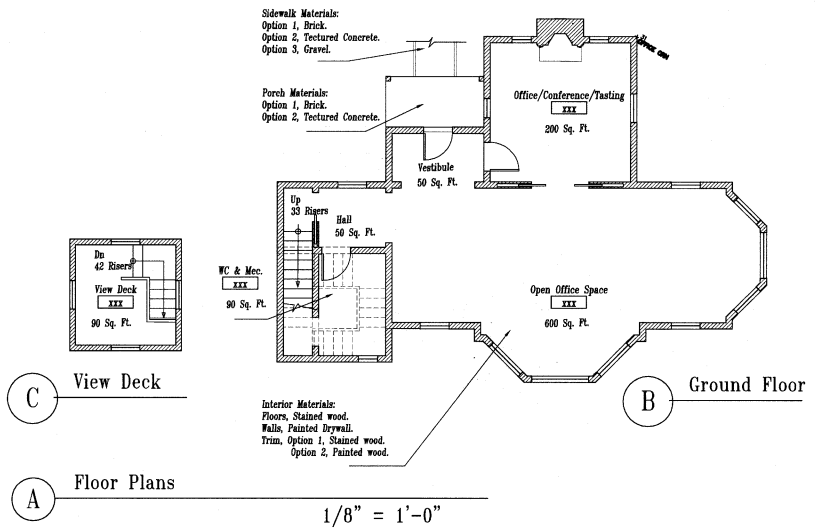
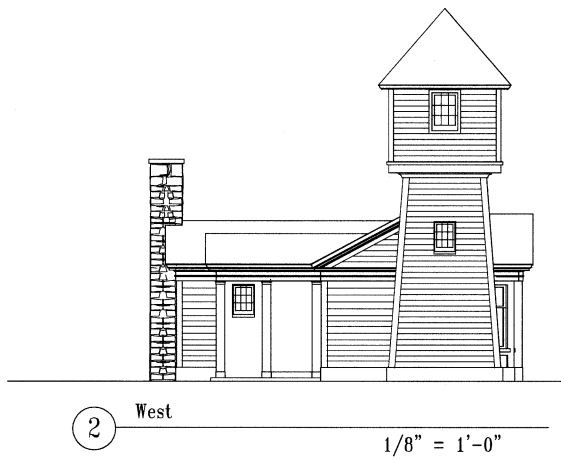
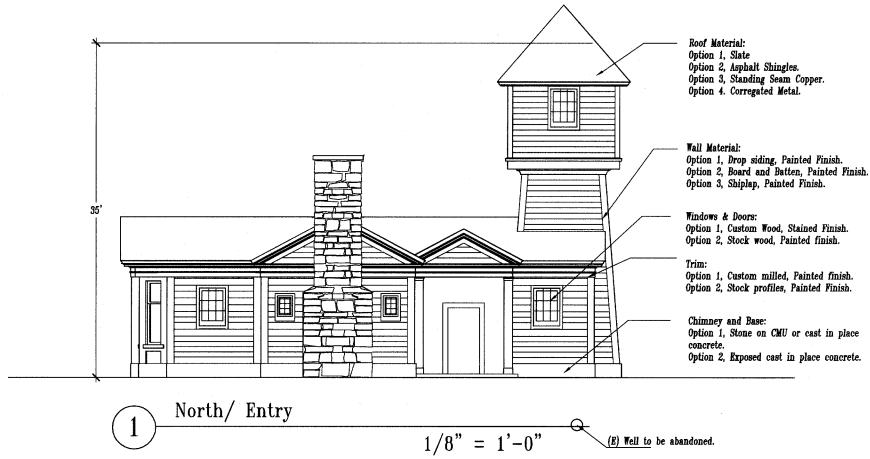
FIRST FLOOR PLAN

# LINCOLN RANCH WINERY



## SECOND FLOOR PLAN

# LINCOLN RANCH WINERY



## WATER TOWER PLAN & ELEVATIONS

# NOTES ON MATERIALS

**Roof Material:**  
Options 1. Standing Seam Metal.  
Options 2. Corrugated Metal.

**Wall Material:**  
Options 1. Bonded Insulating Formwork.  
Options 2. Insulating Formwork - Insulated  
Options 3. Corrugated Metal.

**Windows:**  
Options 1. Custom aluminum, *factory finish*.  
Options 2. Black aluminum, *Painted finish*.  
Options 3. Insulated Metal Sash.

**Doors:**  
Options 1. Custom mahogany, *stained finish*.  
Options 2. Black mahogany, *metal finish*.

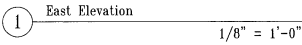
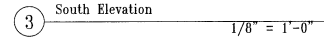
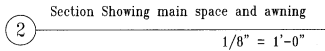
**Floors:**  
Options 1. Custom about metal profile  
finished floors.  
Options 2. Black finish, *Painted finish*.

**Basin:**  
Options 1. Stone or GFI or cast in place concrete.  
Options 2. Exposed cast in place concrete.

**Flooring:**  
Options 1. Hardwood or Teak, *Buffing*, *Cord Pad* and *Burned Bamboo*.  
Note to Wooding Building and office.  
Options 2. Hardwood or Teak, *Buffing*, *Cord Pad* and *Burned Bamboo*.  
Options 3. *stained* *maters* *white* *pine*.

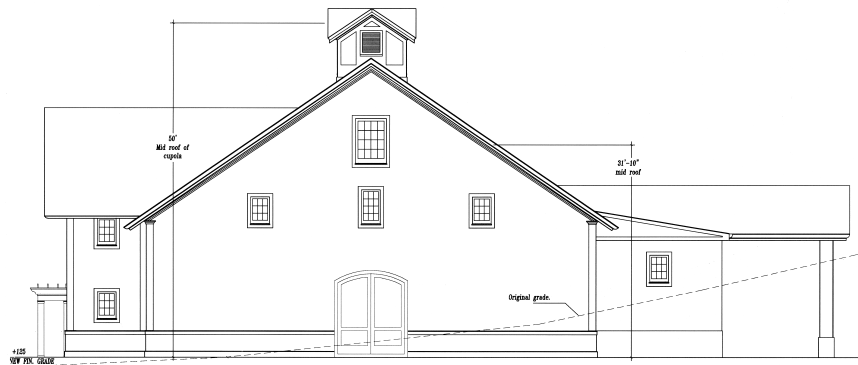
**Tile in Lab, Kitchen and KCo.**

**Ceilings and Downspouts:**  
Options 1. Custom copper.  
Options 2. Black galvanized.



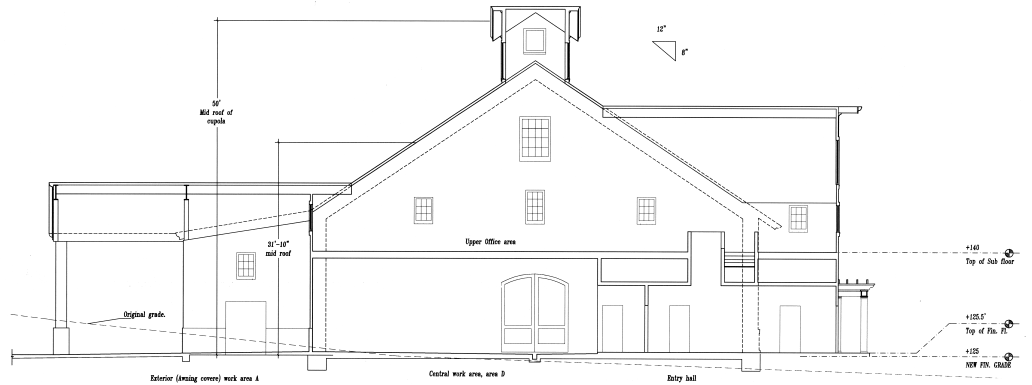
Lincoln\_Ranch\_up1.cdr

# LINCOLN RANCH WINERY



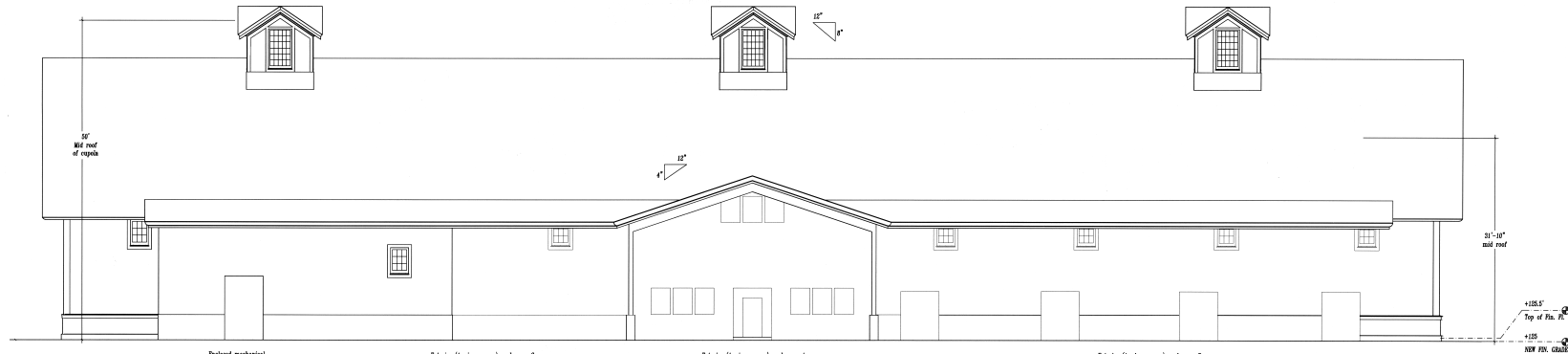
2 North Elevation

1/8" = 1'-0"



3 Cross Section looking North

1/8" = 1'-0"



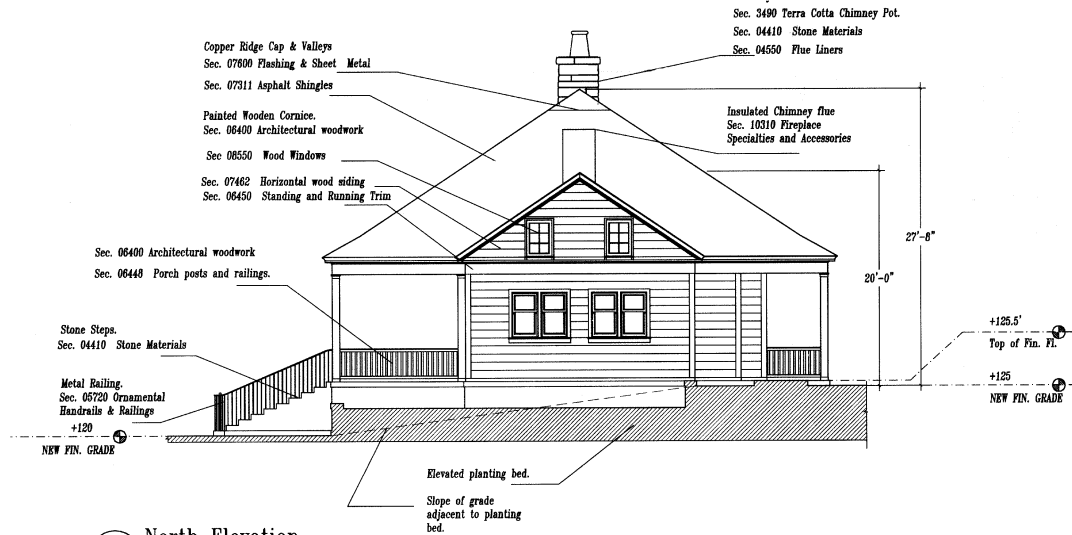
1 West Elevation

1/8" = 1'-0"

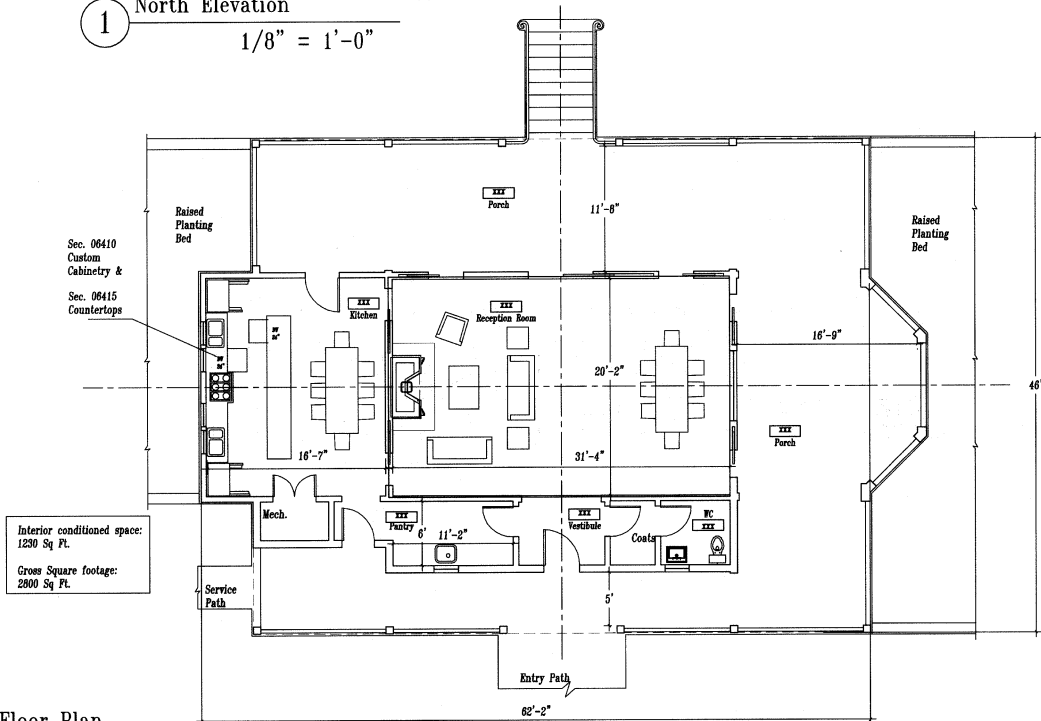
0 5 10 20  
1/8" = 1'-0"

WINERY ELEVATIONS

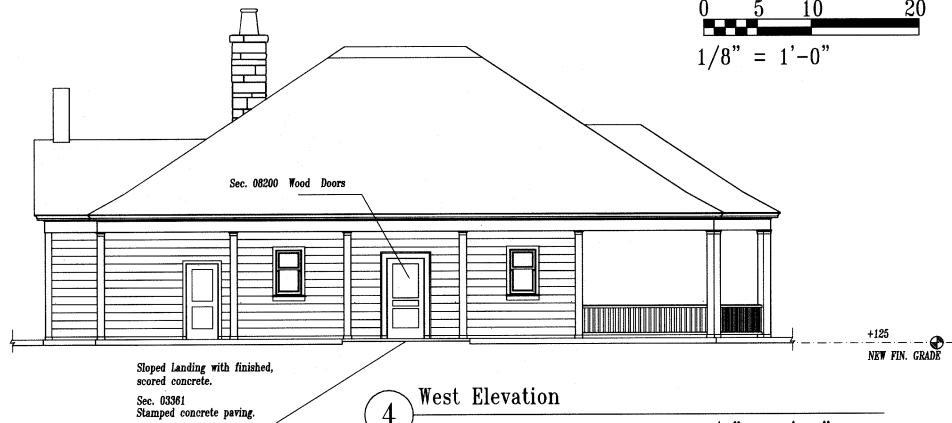
# LINCOLN RANCH WINERY



1 North Elevation  
1/8" = 1'-0"



A Ground Floor Plan  
1/8" = 1'-0"



4 West Elevation  
1/8" = 1'-0"

## RECEPTION BUILDING

# LINCOLN RANCH WINERY

Foundation wall finish:

Option 1  
Stone Veneer On Structural Foundation Walls.

Sec. 04410  
Stone Materials

Option 2  
Exposed cast concrete foundation wall.  
Sec. 03310  
Structural cast in place concrete

3' Planting bed wall

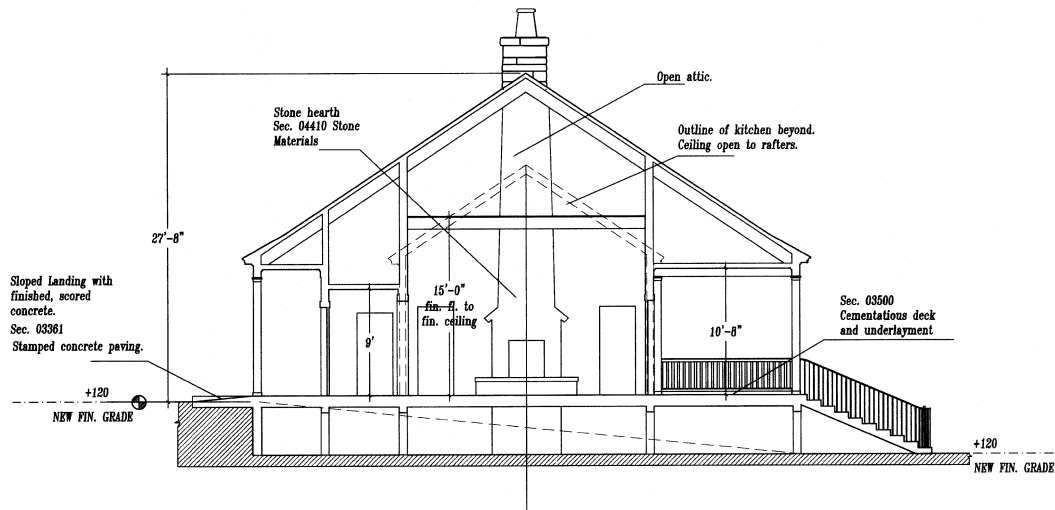
Sec. 08550 Wood Windows

Sec. 08200 Wood Doors

2 East Elevation

$1/8" = 1'-0"$

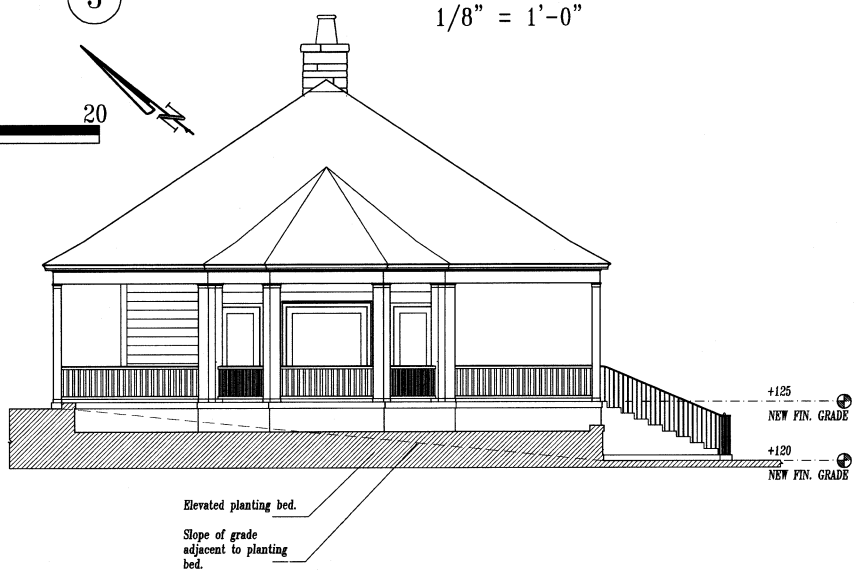
+125  
NEW FIN. GRADE  
+120  
NEW FIN. GRADE



3 Section looking north

$1/8" = 1'-0"$

0 5 10 20  
 $1/8" = 1'-0"$



5 South Elevation

$1/8" = 1'-0"$

RECEPTION BUILDING