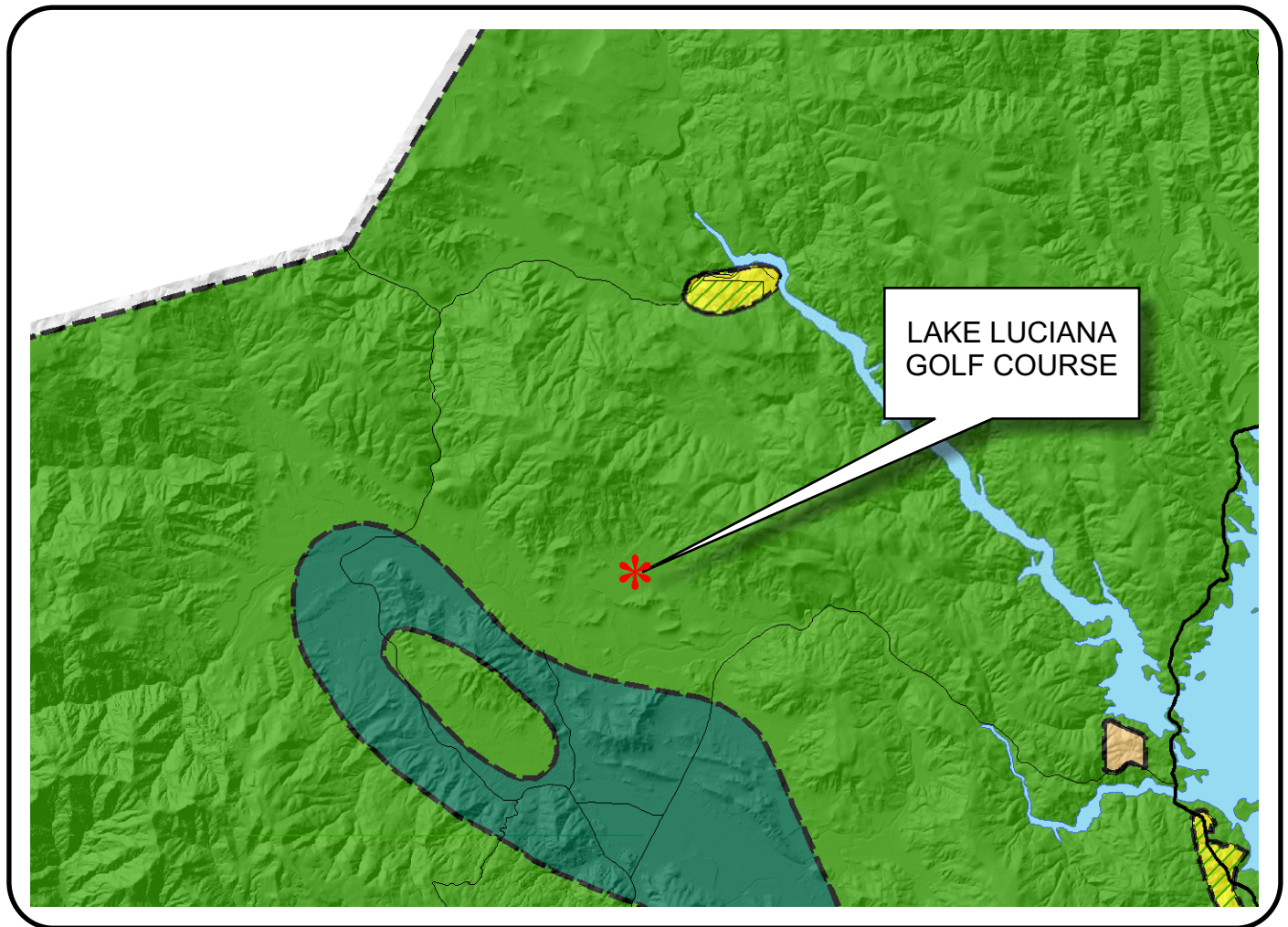








NAPA COUNTY LAND USE PLAN 2008 - 2030





LEGEND


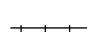




URBANIZED OR NON-AGRICULTURAL

-  Cities
-  Urban Residential *
-  Rural Residential *
-  Industrial
-  Public-Institutional
-  Study Area

OPEN SPACE

-  Agriculture, Watershed & Open Space
-  Agricultural Resource

TRANSPORTATION

-  Mineral Resource
-  Railroad
-  Limited Access Highway
-  Major Road
-  Secondary Road
-  Airport
-  Airport Clear Zone
-  Landfill - General Plan

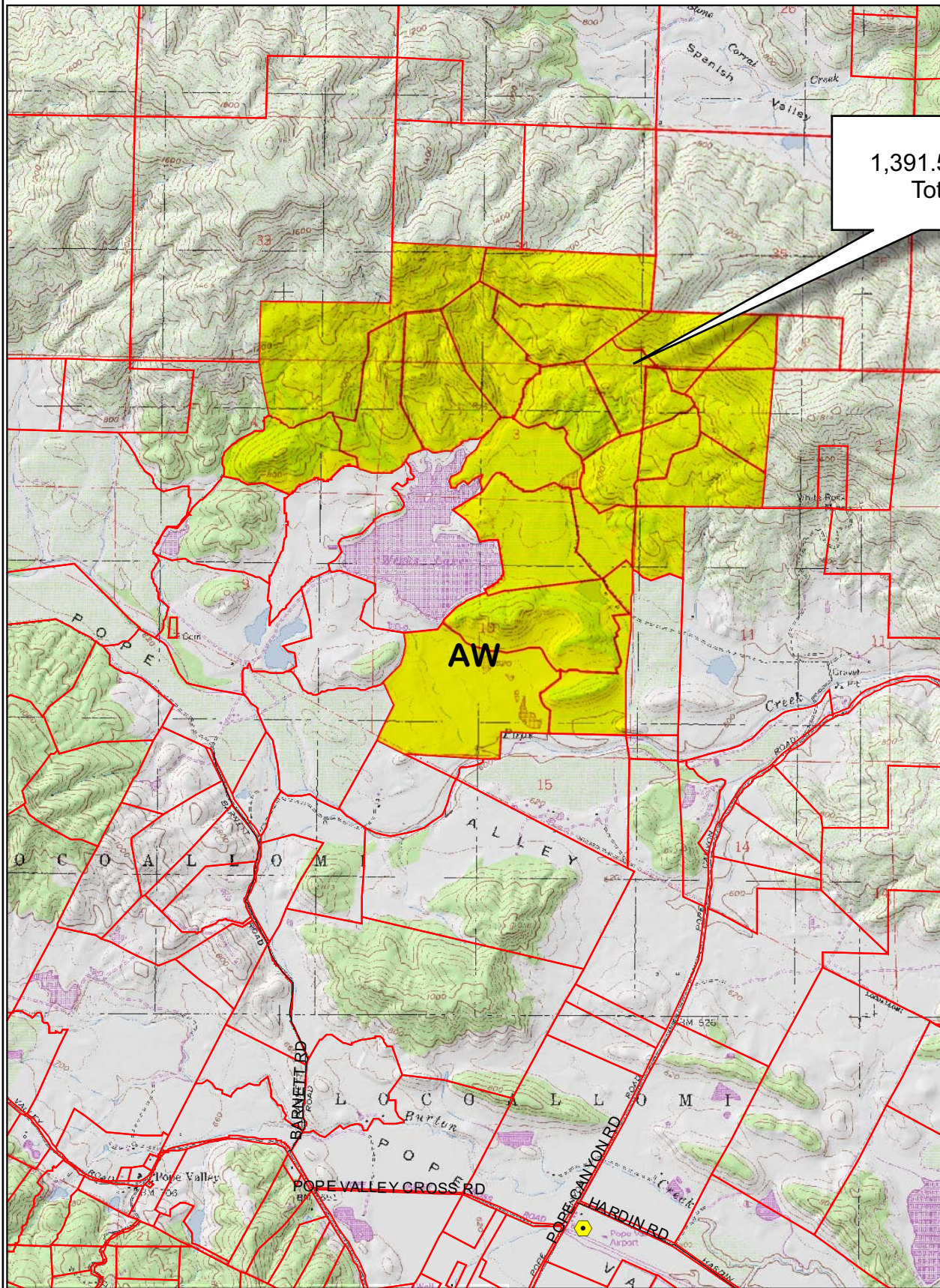
* See Action Item AG/LU-114.1 regarding agriculturally zoned areas within these land use designations

APN
018-008-056
07-30-2008
12D,E UP

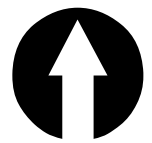
SCALE IN MILES
0 2



LAKE LUCIANA GOLF COURSE



1,391.51 Ac.
Total

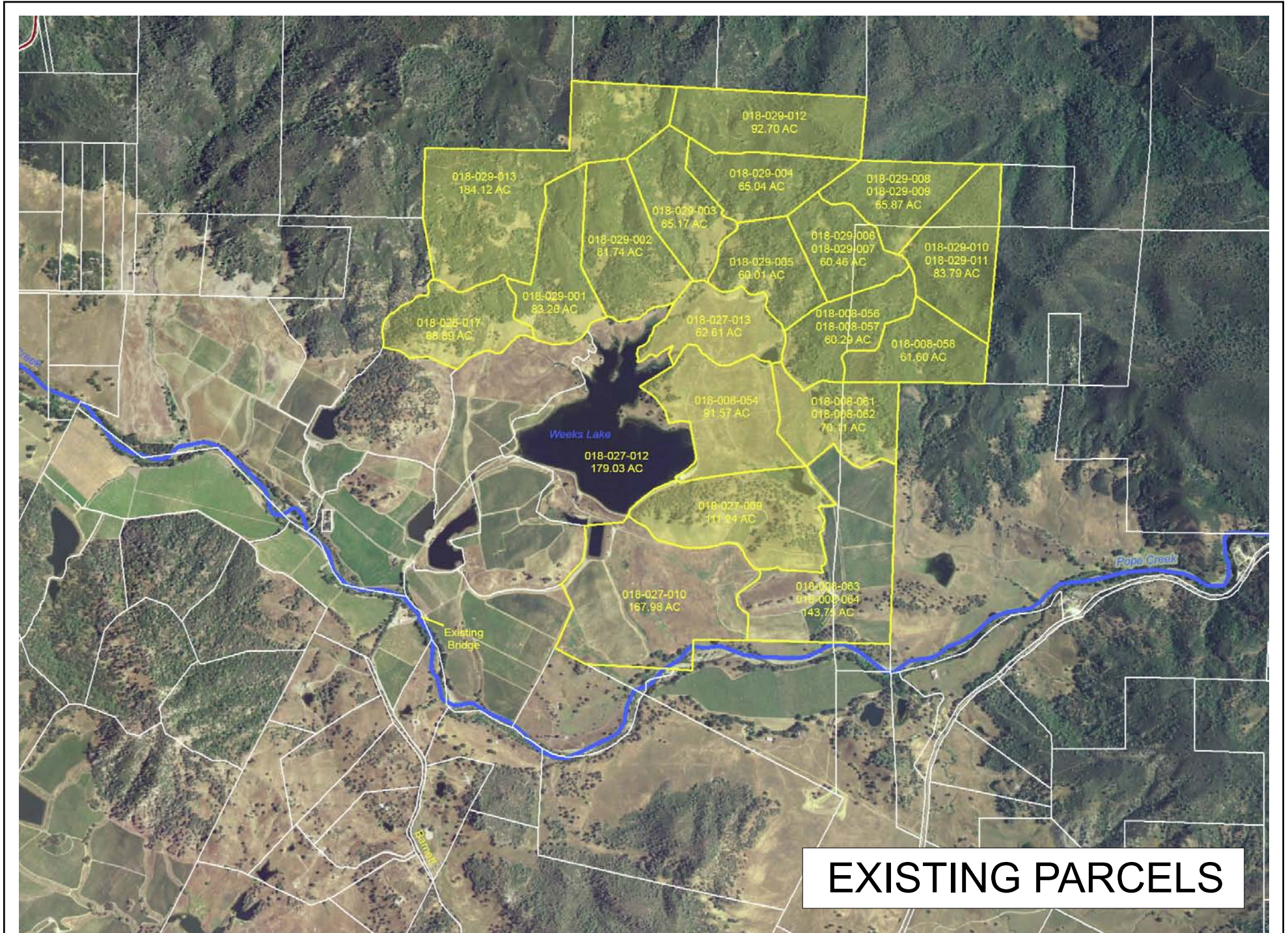


Legend

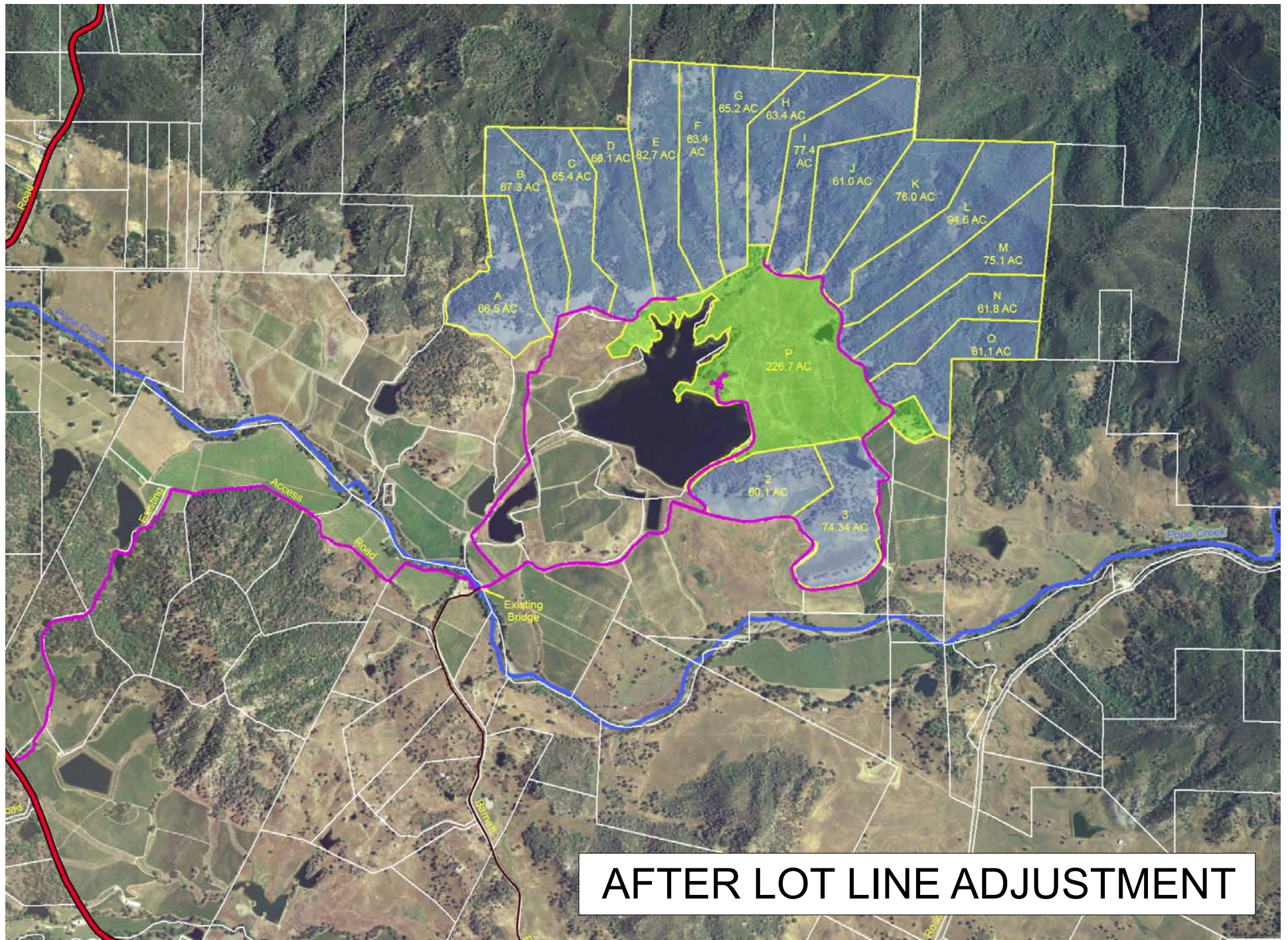
- Wineries in Vicinity**
- Producing
 - Approved
 - Pending
 - Zoning
 - Parcels

0 1,625 3,250 6,500 9,750 13,000 Feet

LAKE LUCIANA GOLF COURSE

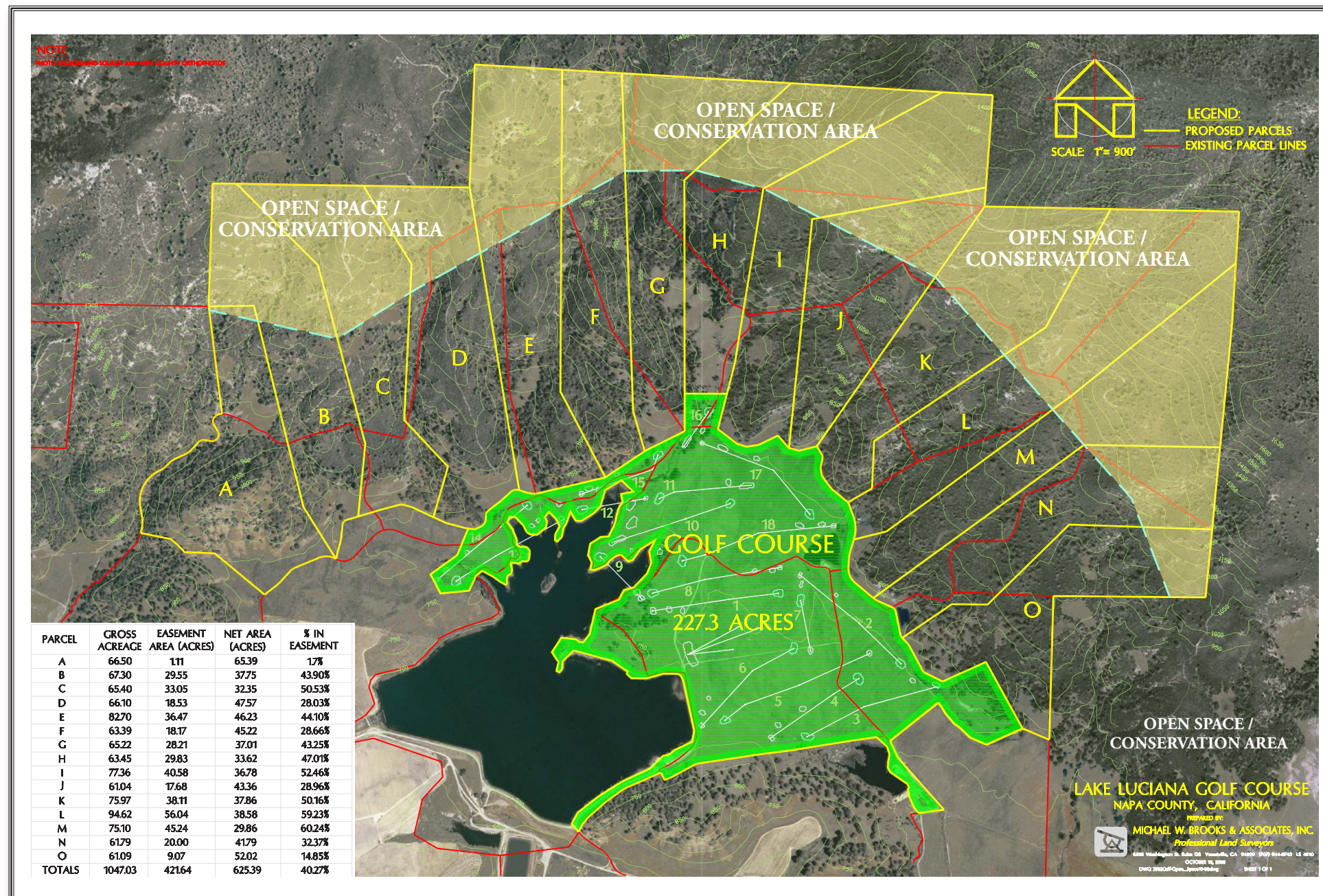


LAKE LUCIANA GOLF COURSE



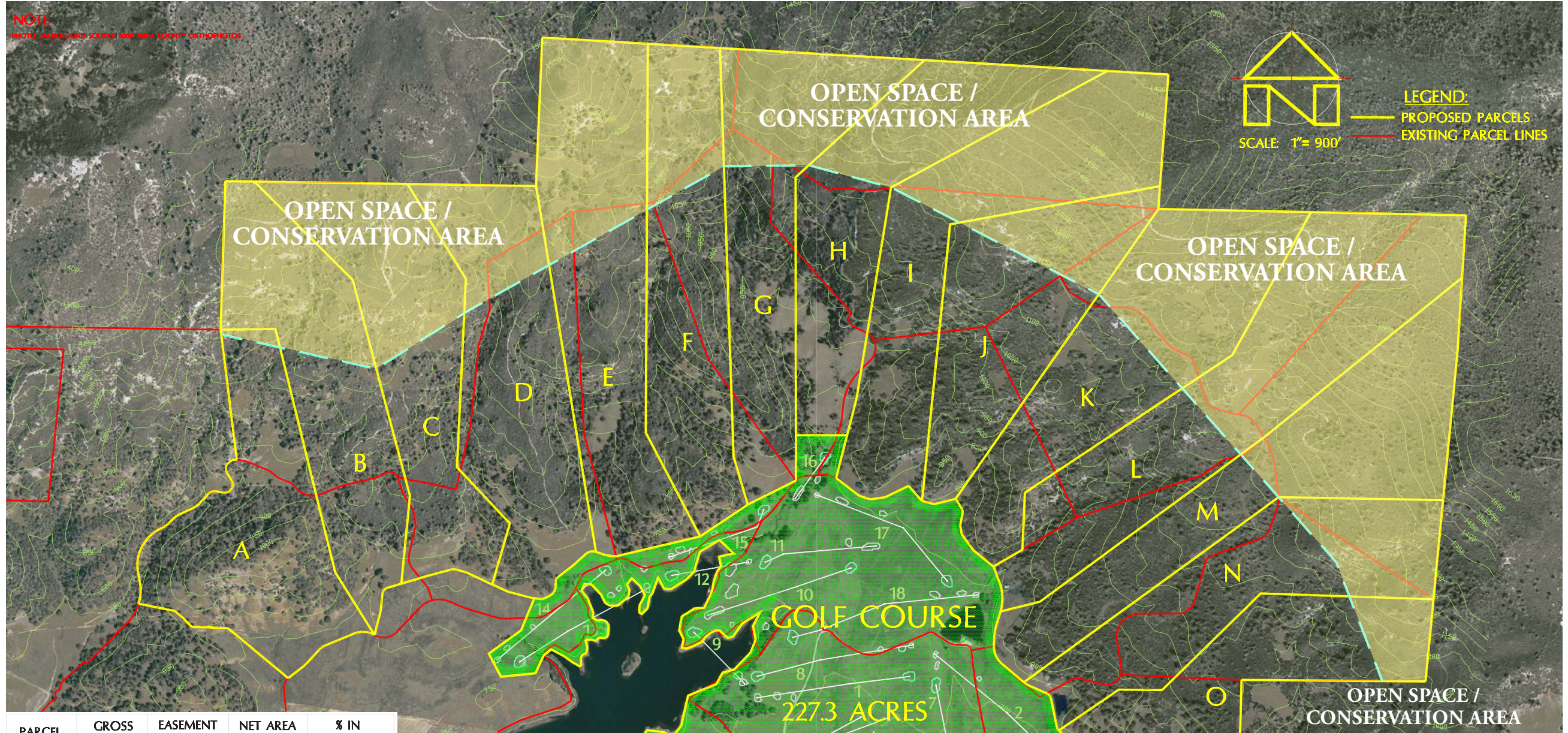
AFTER LOT LINE ADJUSTMENT

October 2008



Lake Luciana

October 2008



LAKE LUCIANA GOLF COURSE



LAKE LUCIANA GOLF COURSE

PLANT LEGEND

SYMBOL BOTANICAL NAME
(COMMON NAME)

TREES:



EXISTING TREES TO REMAIN
DIAMETER EIGHT INCHES (8") OR LARGER



QUERCUS LOBATA
(Valley Oak)

QUERCUS DOUGLASII
(Blue Oak)

SHRUBS:

ARCTOSTAPHYLOS 'HOWARD MCMINN'
(Howard McMinn Manzanita)

CEANOTHUS 'CONCHA'
(Concha Ceanothus)

FREMONTODENDRON 'KEN TAYLOR'
(Flannel Bush)

GARRYA ELIPTICA
(Silk Tassel)

HETEROMELES ARBUTIFOLIA
(Toyon)

RHAMNUS CALIFORNICA
(Coffeeberry)

GROUNDCOVERS:

ARCTOSTAPHYLOS 'EMERALD CARPET'
(Emerald Carpet Manzanita)

CEANOTHUS 'JOYCE COUTLER'
(Joyce Coulter Ceanothus)

VINES:

DISTICIS BUCCINATORIA
(Trumpet Vine)

VITIS CALIFORNICA
(California Wild Grape)

WISTERIA SINENSIS
(Chinese Wisteria)

GRASSES:

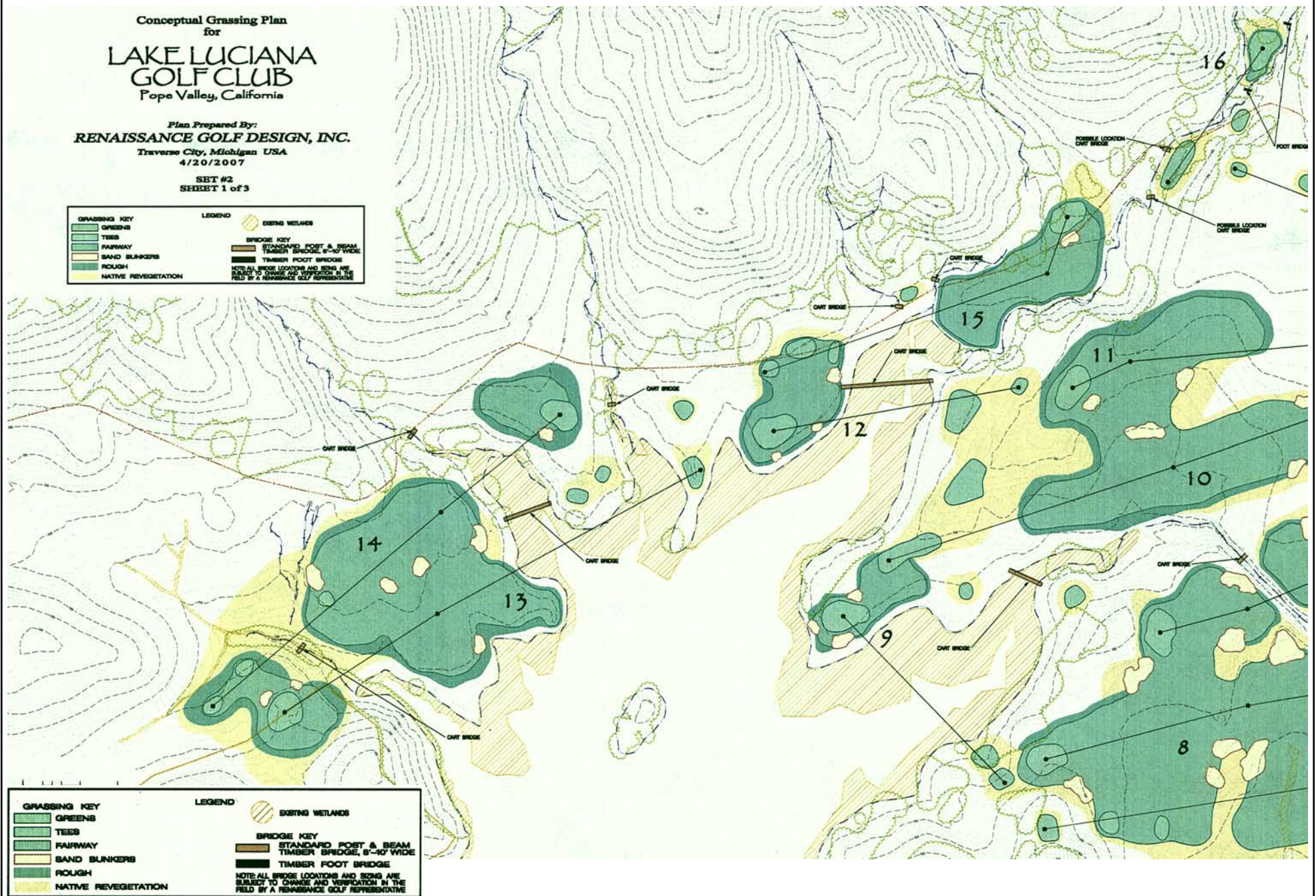
NATIVE GRASSES

DROUGHT TOLERANT TURF
(Fescue Mix)



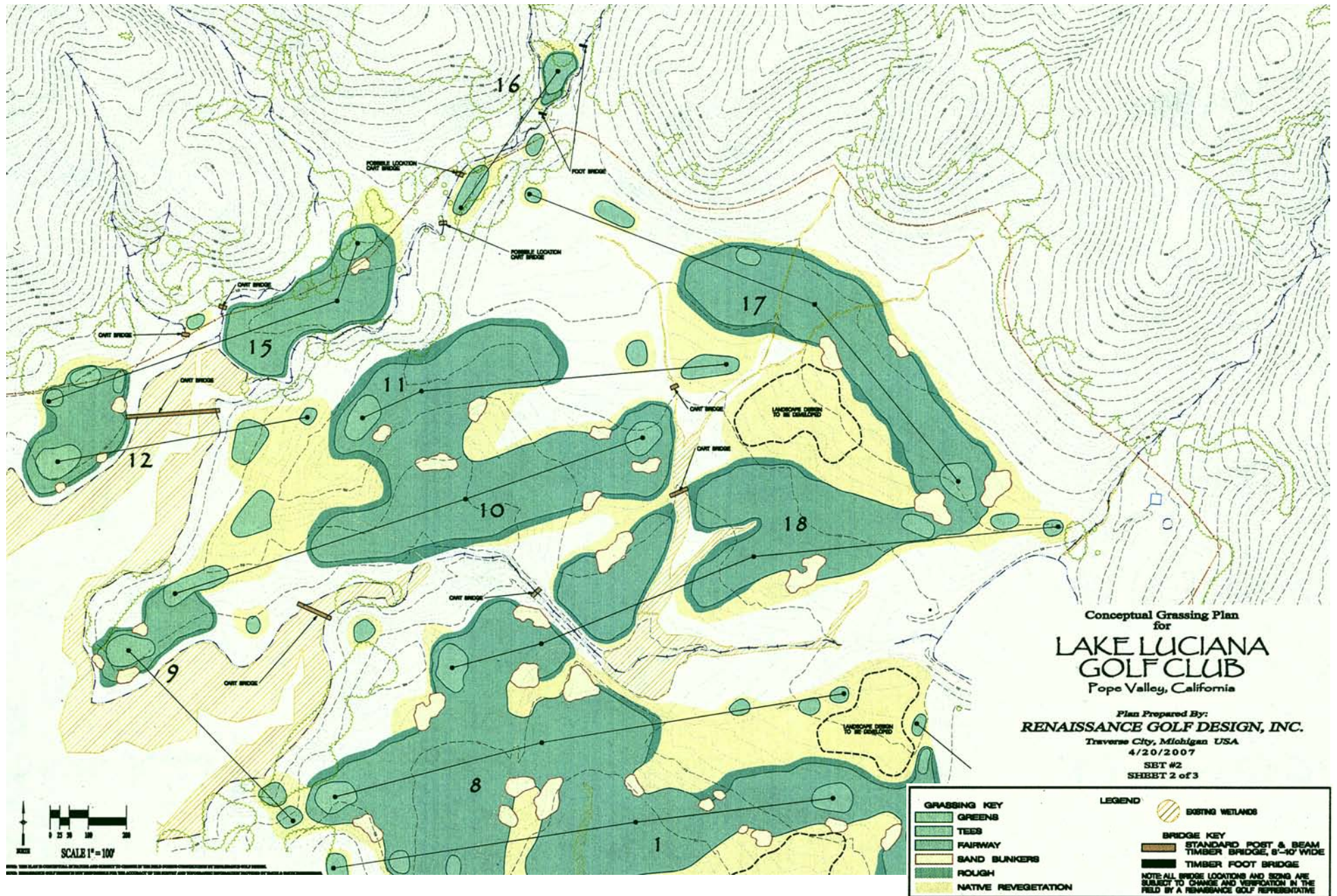
LAKE LUCIANA GOLF COURSE

CONCEPTUAL GRASSING PLAN (1 OF 3)



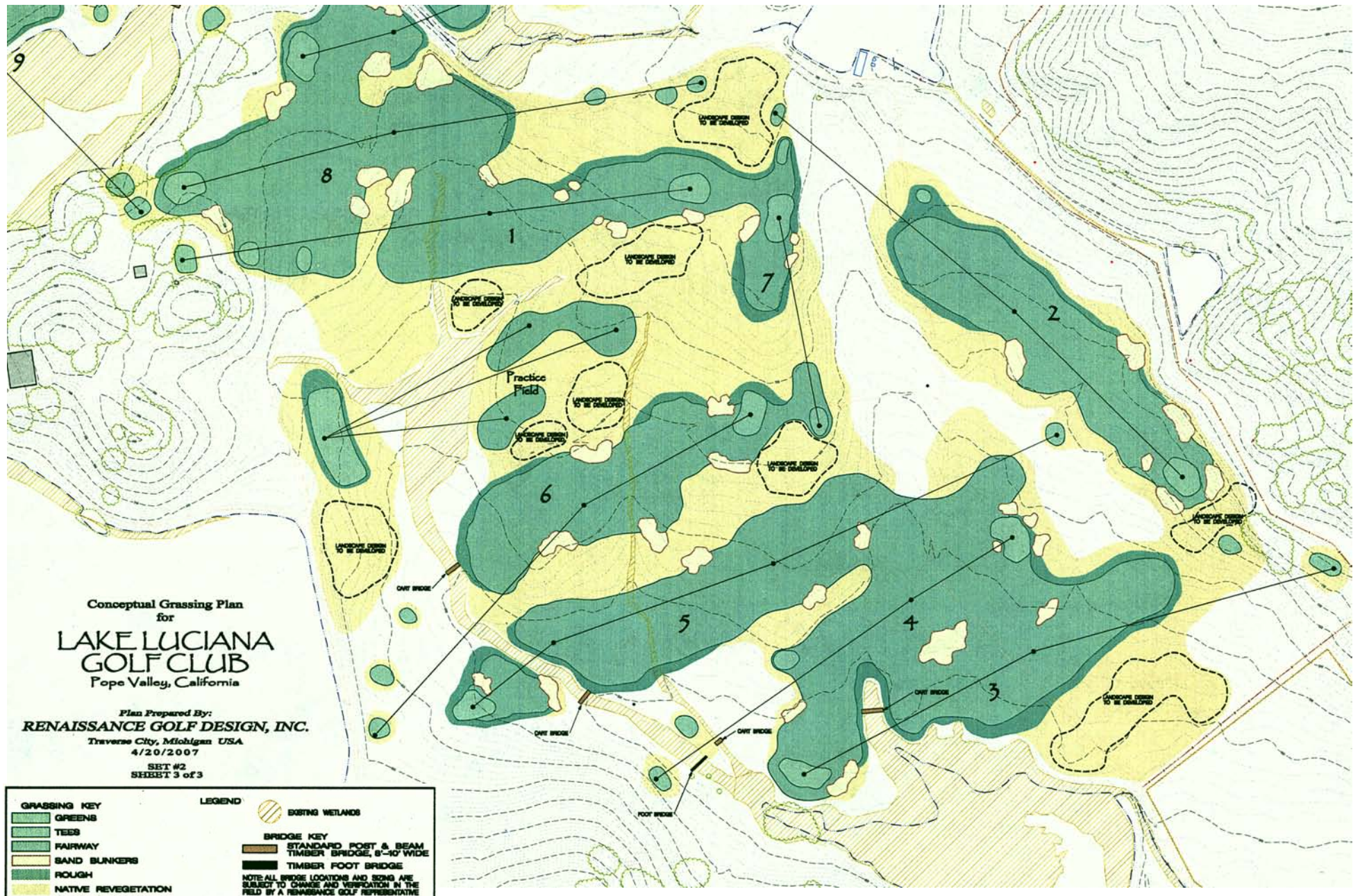
LAKE LUCIANA GOLF COURSE

CONCEPTUAL GRASSING PLAN (2 OF 3)

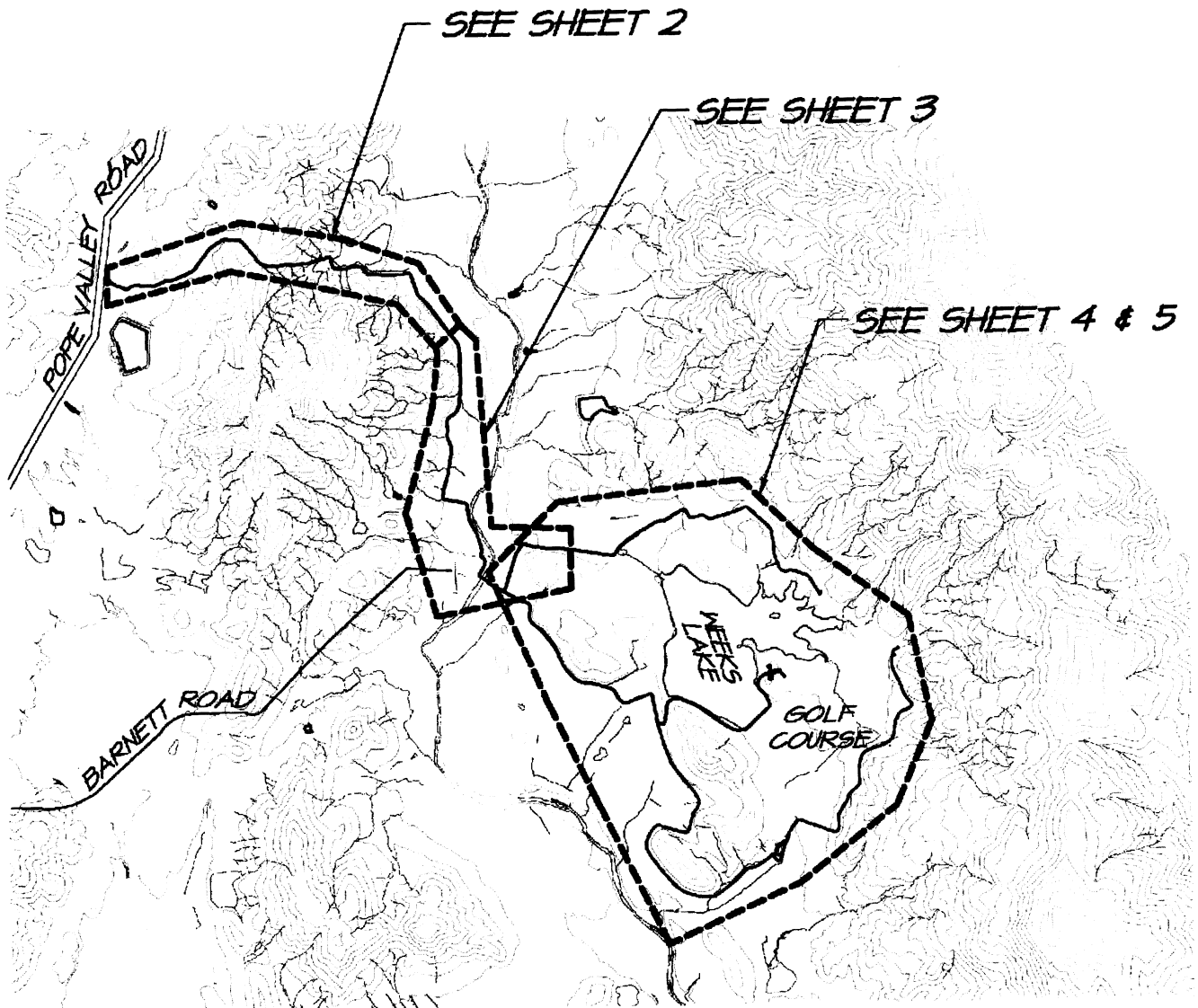


LAKE LUCIANA GOLF COURSE

CONCEPTUAL GRASSING PLAN (3 OF 3)



LAKE LUCIANA GOLF COURSE



SITE PLAN OVERVIEW

Fig. 2.3.5 .A

LAKE LUCIANA GOLF COURSE

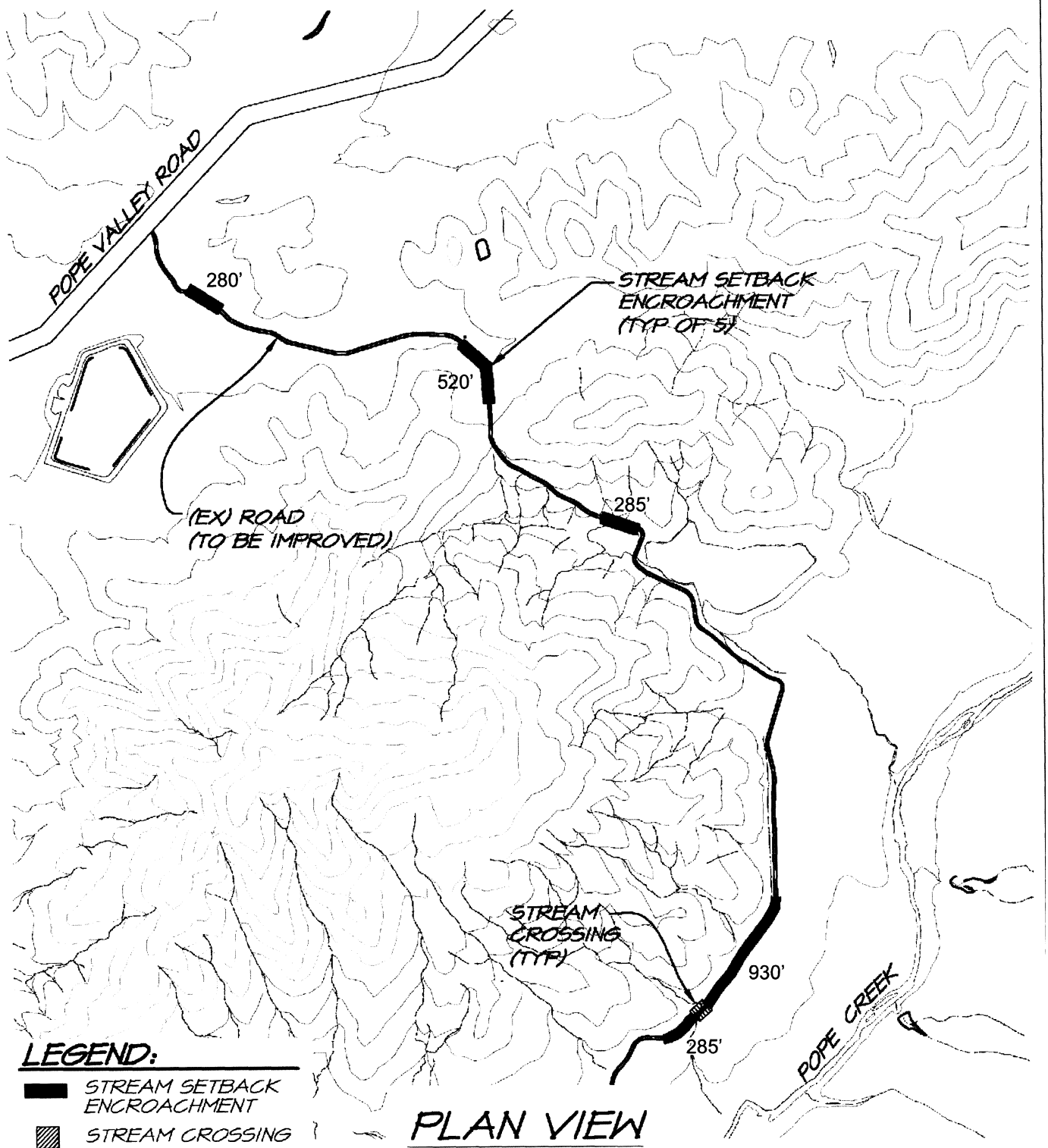


Fig. 2.3.5 .B

LAKE LUCIANA GOLF COURSE

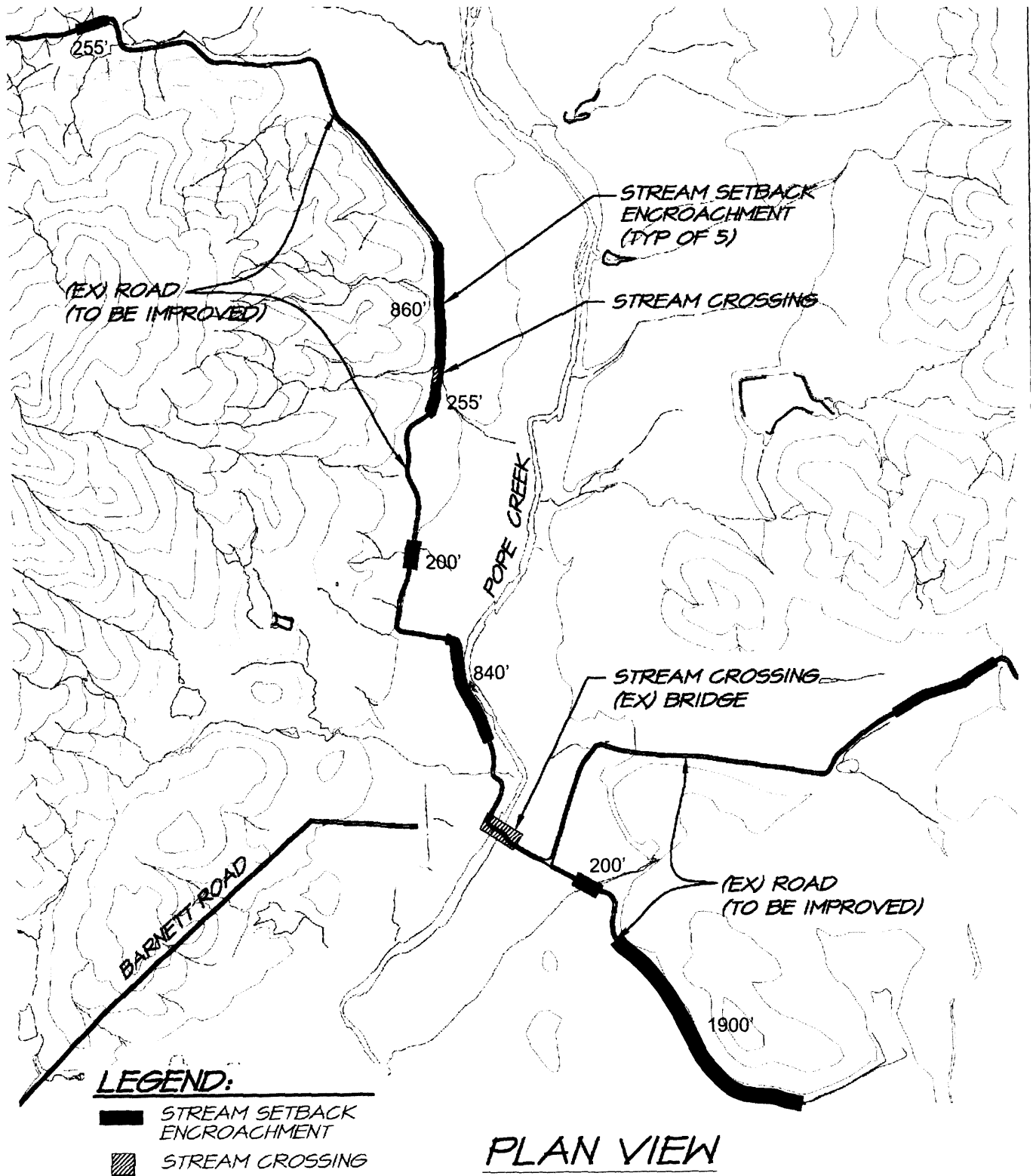


Fig. 2.3.5 .C

LAKE LUCIANA GOLF COURSE

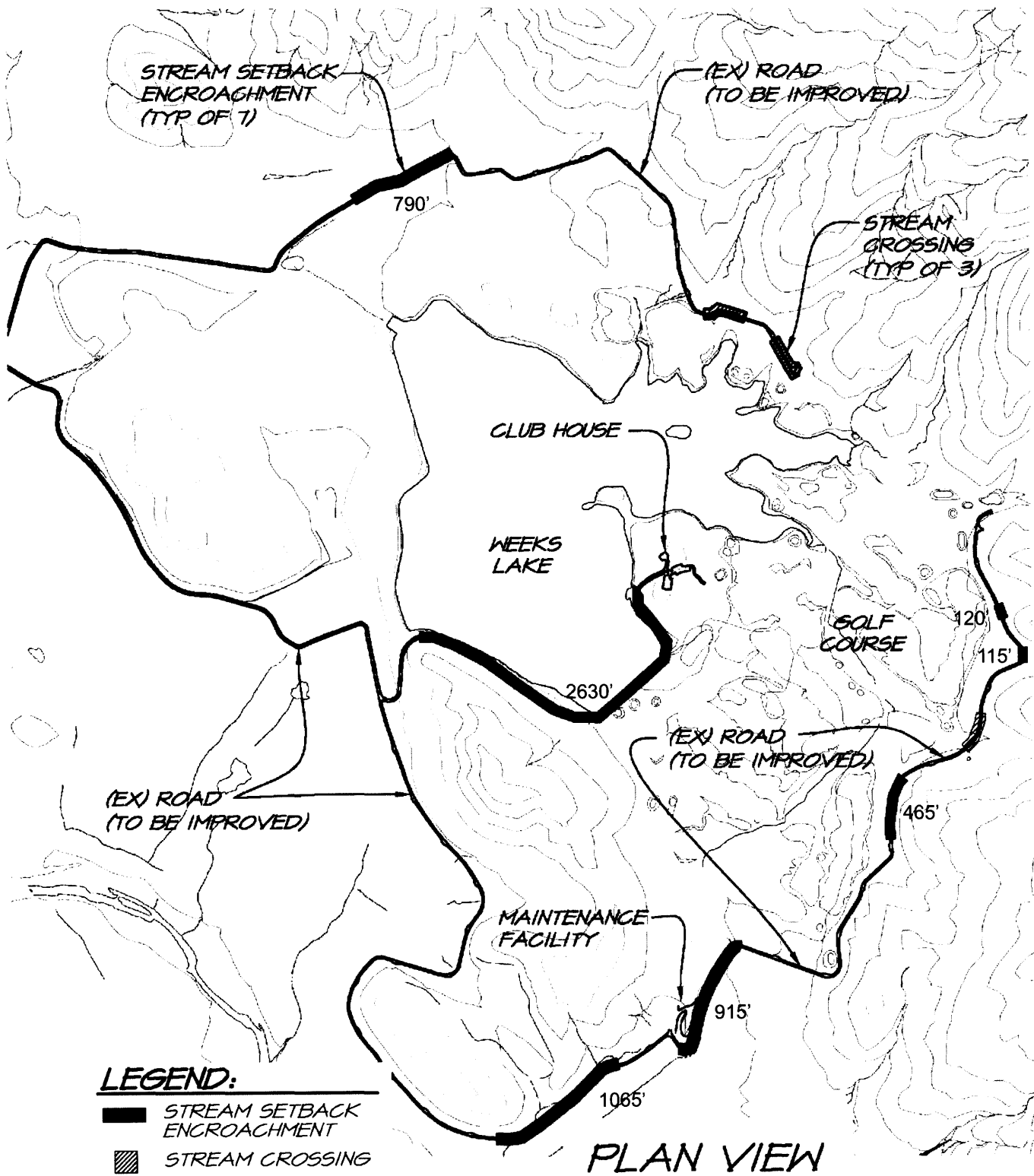


Fig. 2.3.5 .D

LAKE LUCIANA GOLF COURSE

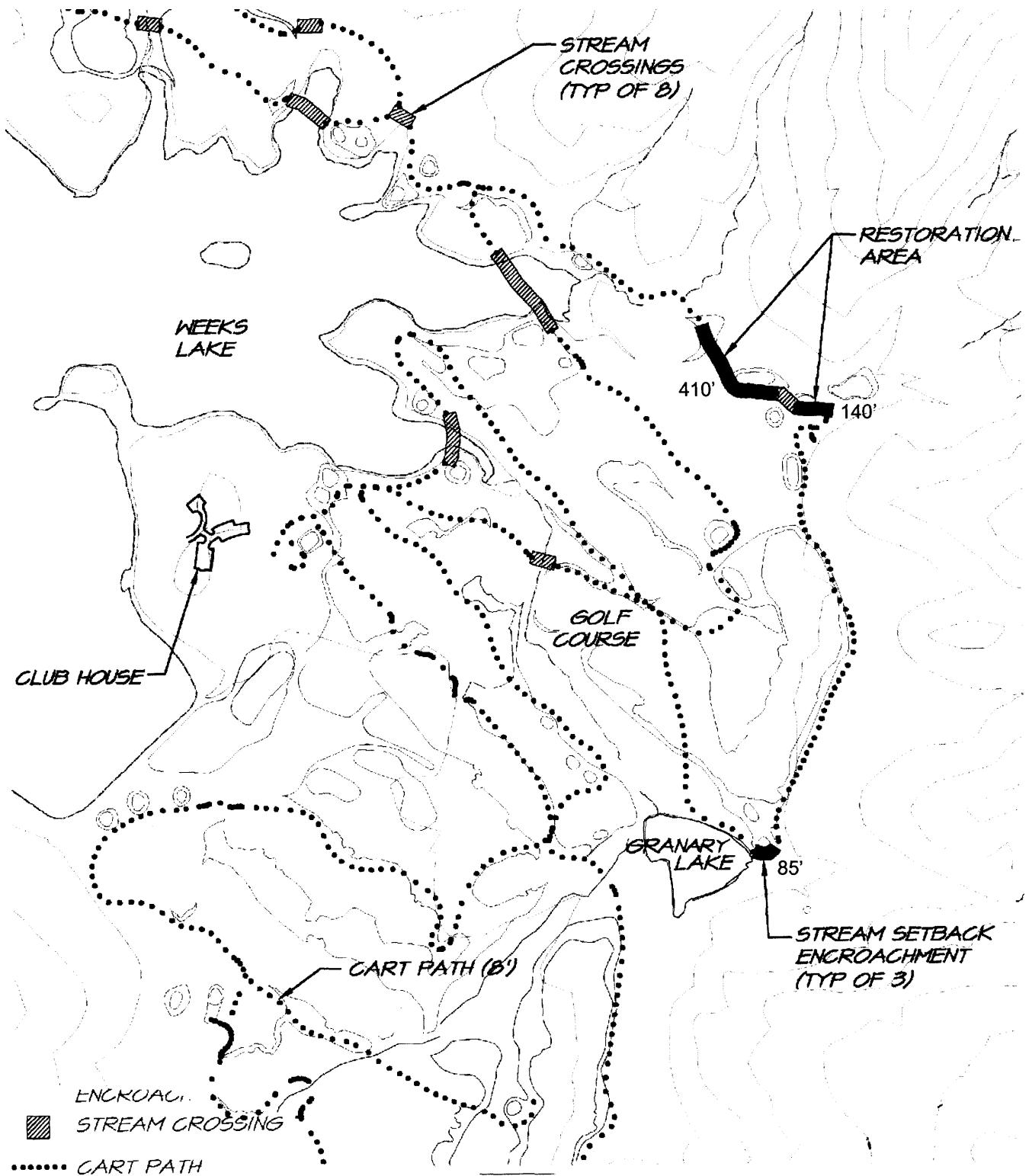


Fig. 2.3.5 .E

LAKE LUCIANA GOLF COURSE



Luciana Golf Course Primary Access Road looking northwest toward the project site with intervening knoll



Bridge over Pope Creek - Luciana Golf Course Access Road



Entry Road along southeast side of Weeks Lake



Granary Lake and Granary Structure beyond



Facing east looking across Weeks Lake toward the site of the proposed clubhouse and boathouse



Site of proposed Luciana Golf Course Maintenance Yard

VIEWS OF PROJECT SITE

LAKE LUCIANA GOLF COURSE



View from eastern edge of Weeks Lake looking west.



View from eastern edge of Weeks Lake looking north across site for proposed golf course to adjacent hillslopes.



View from north end of Weeks Lake looking south to peninsula proposed for Golf Clubhouse and Weeks Lake beyond.

PANORAMIC VIEWS OF PROJECT SITE