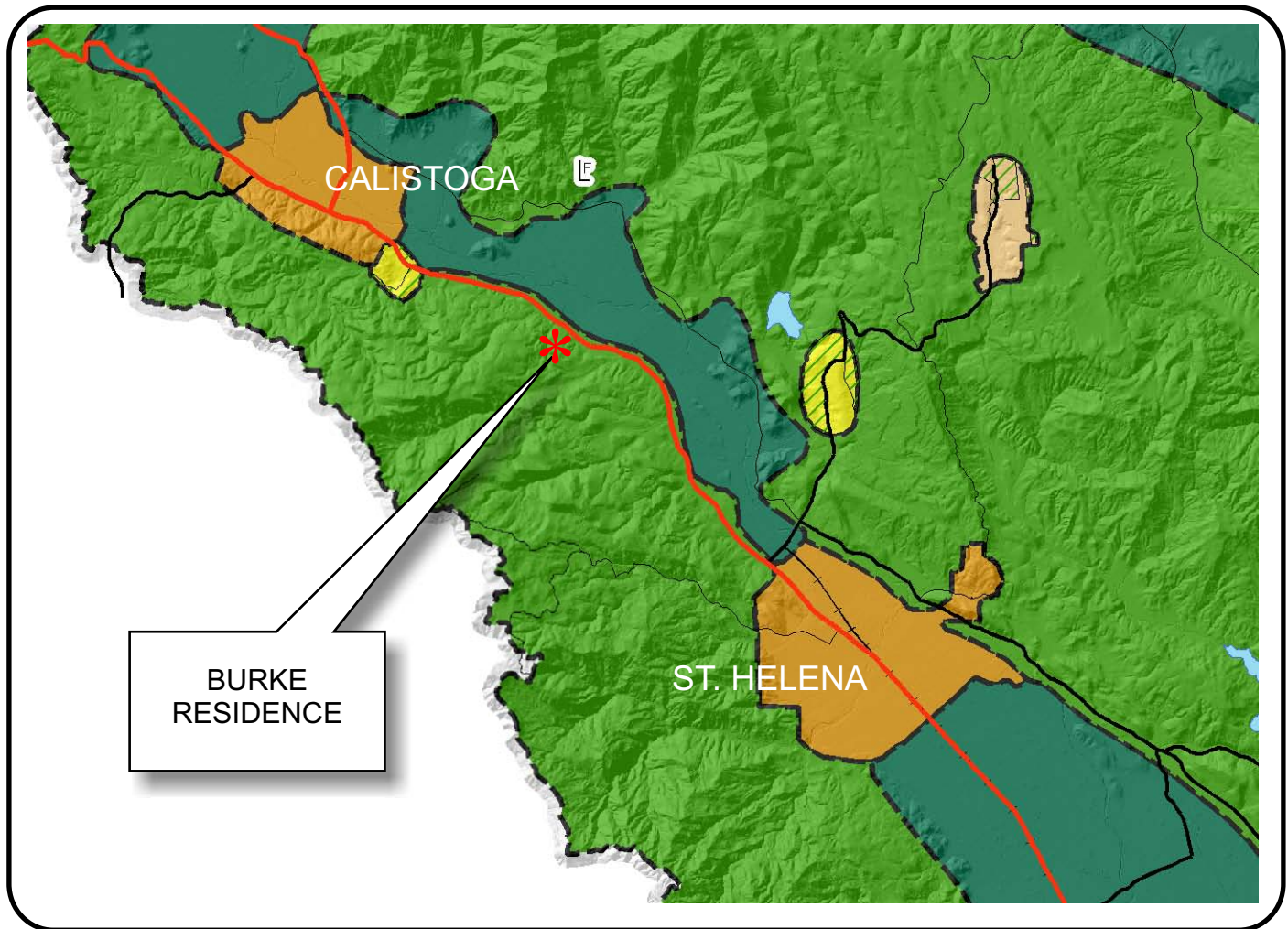


NAPA COUNTY LAND USE PLAN 2008 - 2030



LEGEND

URBANIZED OR NON-AGRICULTURAL

- Cities
- Urban Residential *
- Rural Residential *
- Industrial
- Public-Institutional
- Study Area

OPEN SPACE

- Agriculture, Watershed & Open Space
- Agricultural Resource

TRANSPORTATION

- Mineral Resource
- Railroad
- Limited Access Highway
- Major Road
- Secondary Road
- Airport
- Airport Clear Zone
- L Landfill - General Plan

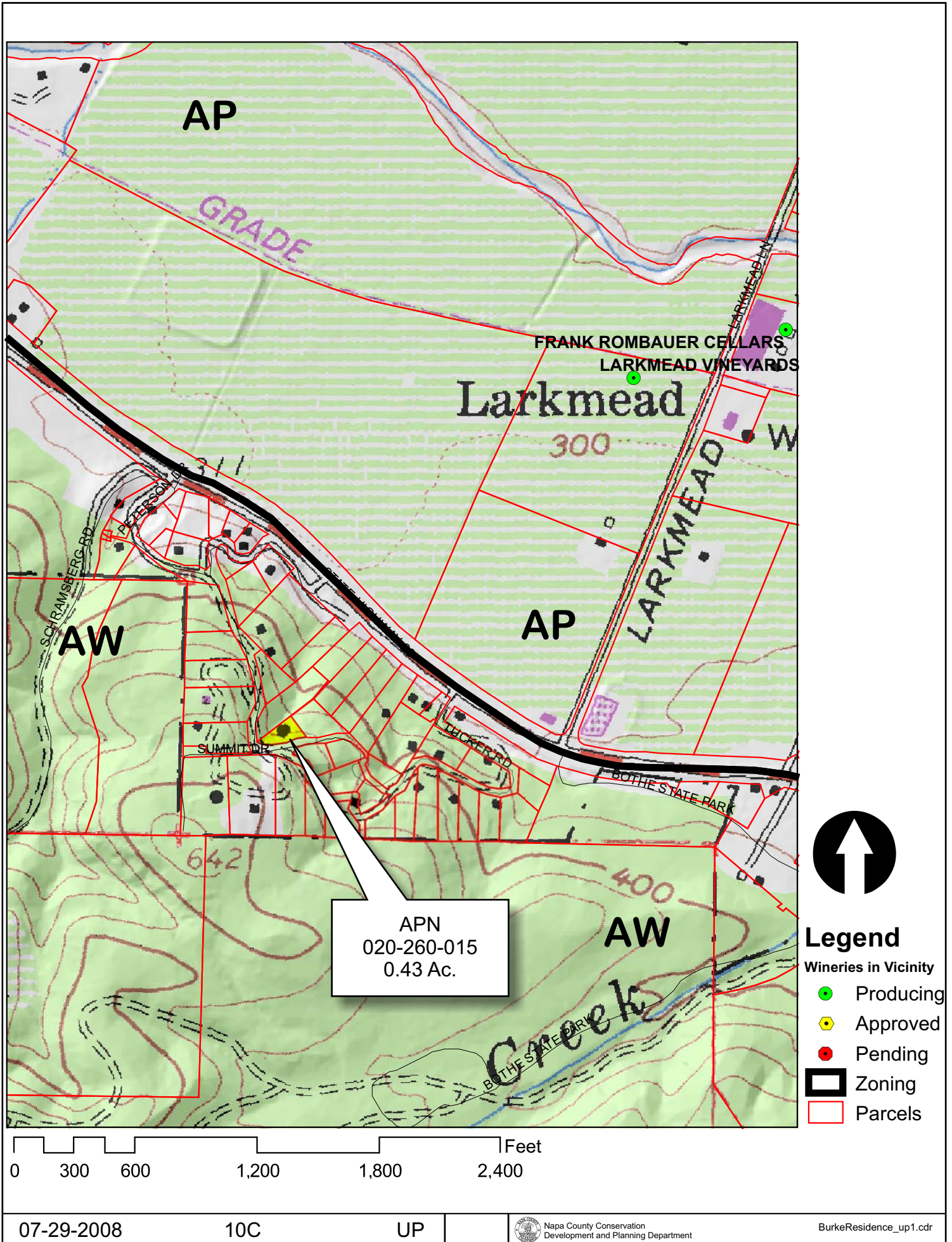
* See Action Item AG/LU-114.1 regarding agriculturally zoned areas within these land use designations

APN
020-260-015
07-29-2008
10C UP

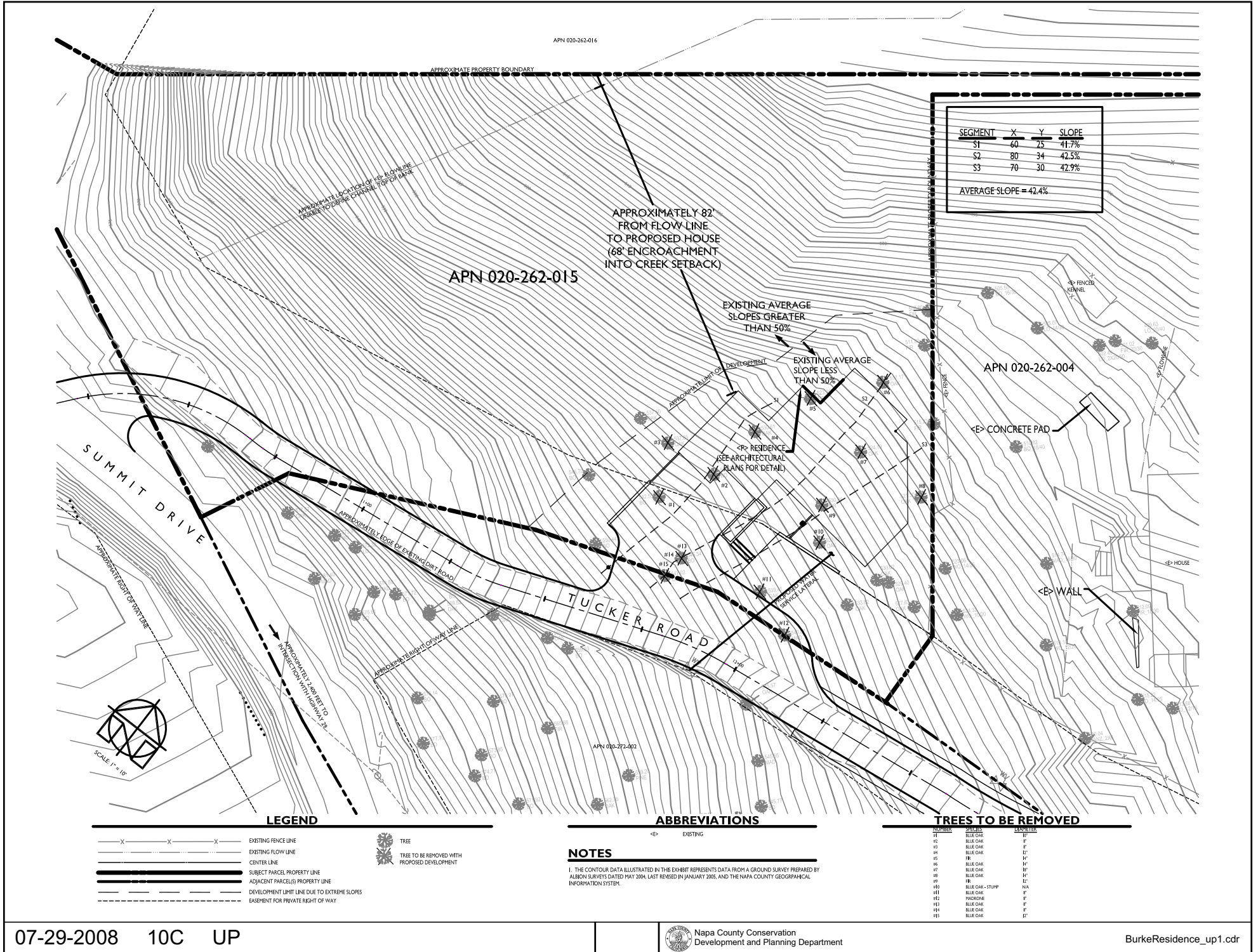
SCALE IN MILES
0 2



BURKE



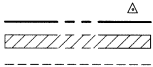
BURKE



BURKE

PREPARED BY
ALBION SURVEYS, INC.
MARCH 18, 2008

LEGEND:



CONTROL POINT
APPROXIMATE PROPERTY LINE
PORTION OF SUBJECT LOTS ENCUMBERED BY A PRIVATE EASEMENT FOR RIGHT-OF-WAY
AND FORMERLY ENCUMBERED BY A PUBLIC EASEMENT FOR RIGHT-OF-WAY
BOUNDARY OF ROADWAYS AS SHOWN ON THE TUCKER ACRES SUBDIVISION.
THIS WAS ALSO THE BOUNDARY FOR THE PUBLIC RIGHT-OF-WAY EASEMENT THAT WAS ABANDONED.
THIS IS STILL THE BOUNDARY FOR THE PRIVATE RIGHT-OF-WAY EASEMENT

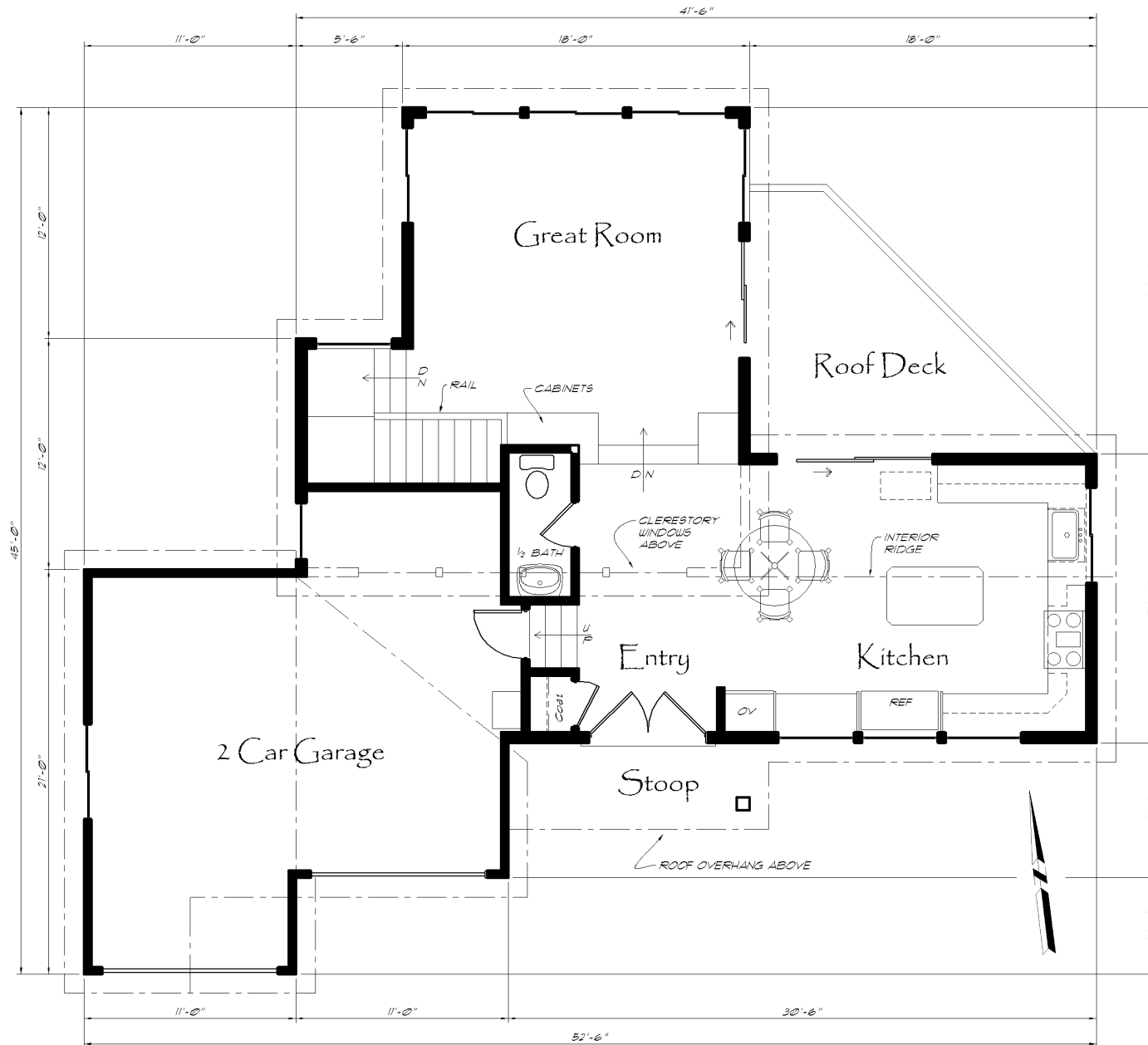
PARCEL ONE
1.08 ACRES NET
1.17 ACRES GROSS

PARCEL THREE
0.42 ACRES NET
0.59 ACRES GROSS

PORTION OF SUBJECT LOTS
ENCUMBERED BY A PRIVATE EASEMENT
FOR RIGHT-OF-WAY AND FORMERLY
ENCUMBERED BY A PUBLIC EASEMENT
FOR RIGHT-OF-WAY

LINE TABLE		
LINE	LENGTH	BEARING
L1	5.00	S48°00'25"E
L2	20.00	S02°20'42"E
L3	50.05	N85°36'18"E
L4	47.07	N71°06'23"E
L5	24.14	S25°42'06"W
L6	40.91	S46°31'04"E
L7	7.98	N08°00'44"W
L8	21.11	N82°39'15"W
L9	20.00	S81°59'16"W
L10	5.76	S08°00'42"E
L11	48.76	N67°41'00"W
L12	50.46	S71°48'18"W
L13	50.05	S85°36'18"W

BURKE



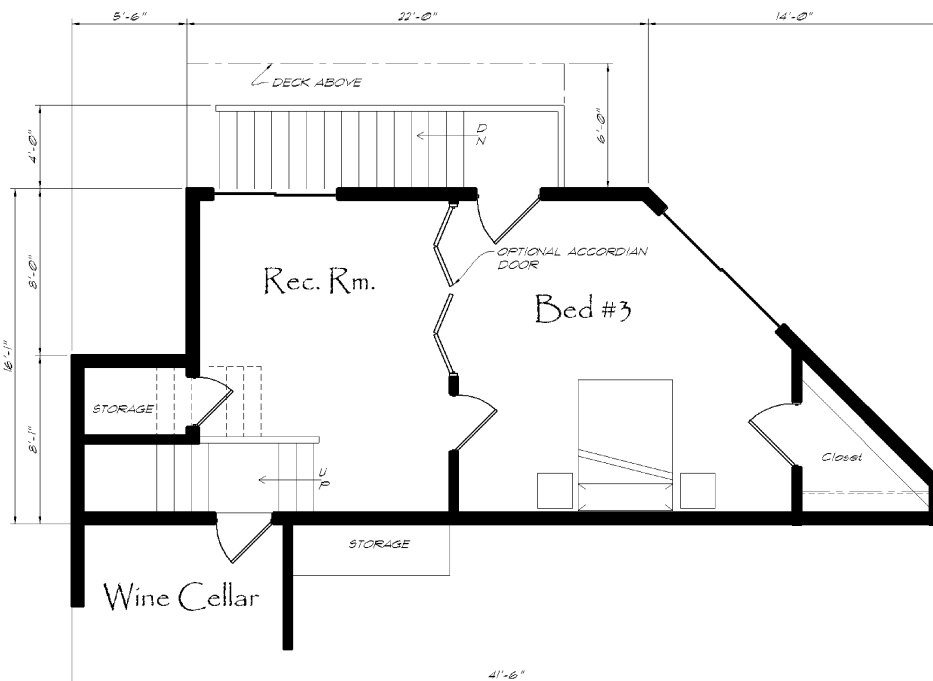
Main Floor Plan

833 s.f. gar. = 455 s.f.
total house = 2386 s.f.

BURKE



Lower Floor Plan 1072 s.f.



Basement Floor Plan 481 s.f.

Cut/Fill Analysis

Grade Elev	New Length	Exist. Length	Difference
553	5.50	5.50	0.00
552	12.75	12.70	0.05
551	21.20	20.70	0.50
550	29.90	28.00	1.90
549	40.30	37.20	3.10
548	46.30	40.00	6.30
547	52.30	42.80	9.50
546	63.10	45.30	17.80
545	67.00	49.00	18.00
544	60.00	52.50	7.50
543	68.00	57.30	10.70
542	65.00	63.00	2.00
541	74.00	67.40	6.60
540	62.00	59.75	2.25
539	65.00	62.00	3.00
538	59.00	57.90	1.10
537	55.50	52.75	2.75
536	49.20	45.50	3.70
535	42.00	41.70	0.30
534	27.00	33.10	(6.10)
533	20.30	25.90	(5.60)
532	13.70	18.30	(4.60)
531	7.50	11.20	(3.70)

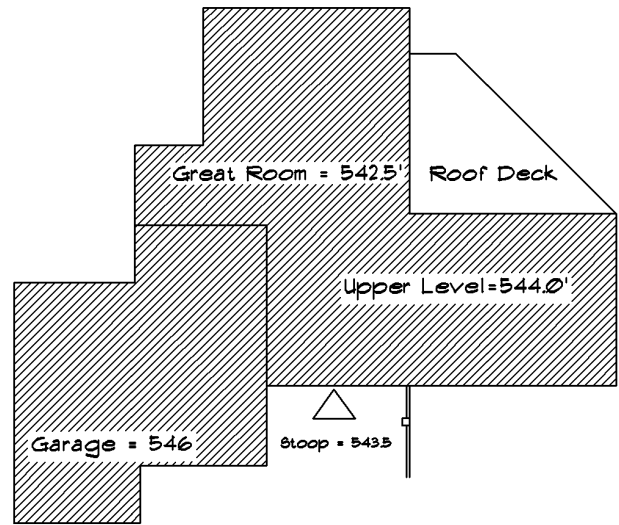
Totals **1,006.55** **929.50** **77.05**

Grade Change **23.00**

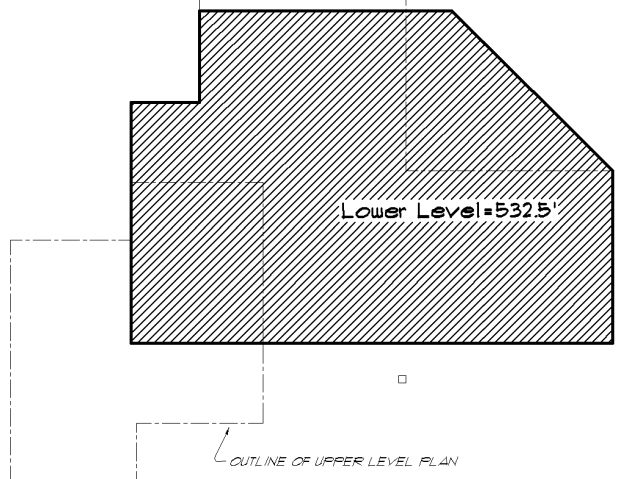
Cubic Feet Fill 1,772.15

Cubic Yards Fill **65.64**

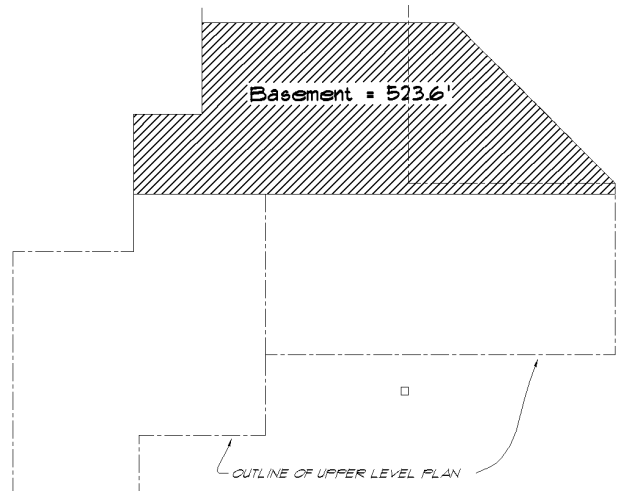
Conservative Maximum Yards of Fill: **70.00**



Upper Plan



Lower Plan



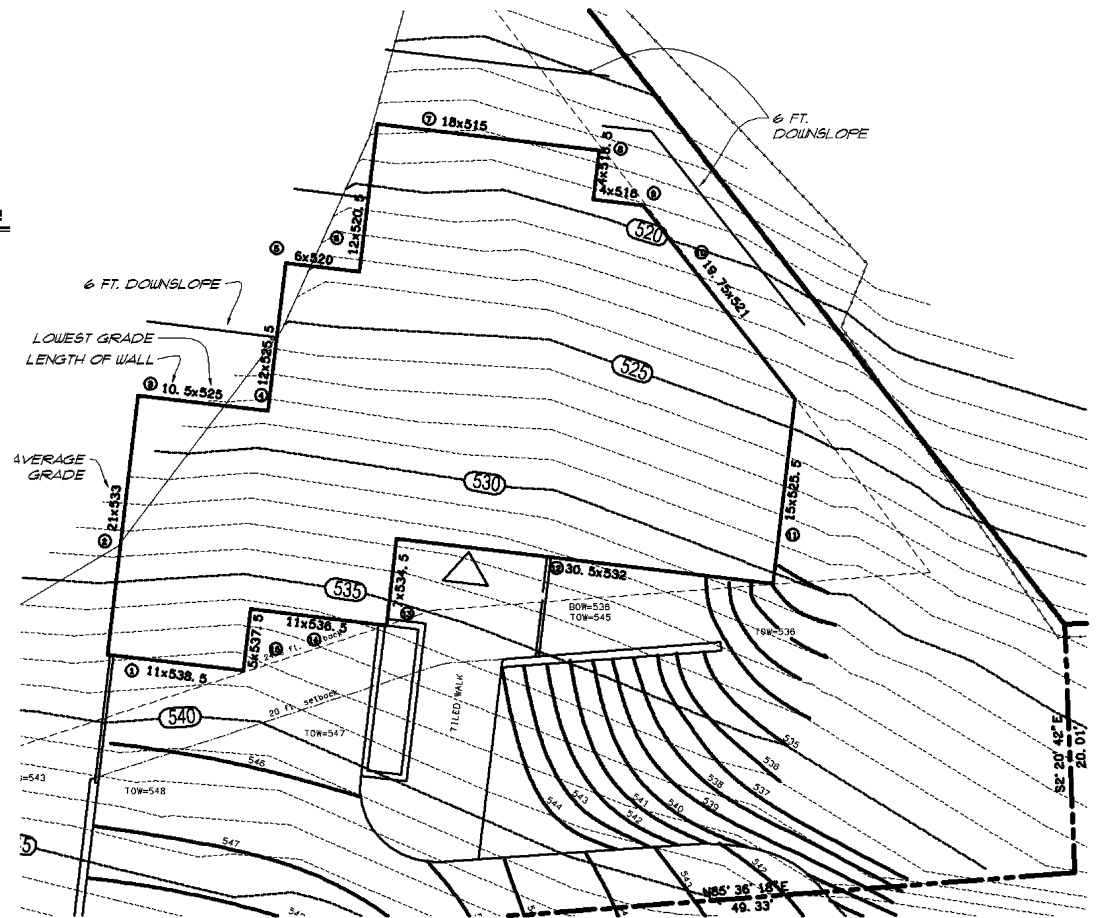
Basement Plan

BURKE

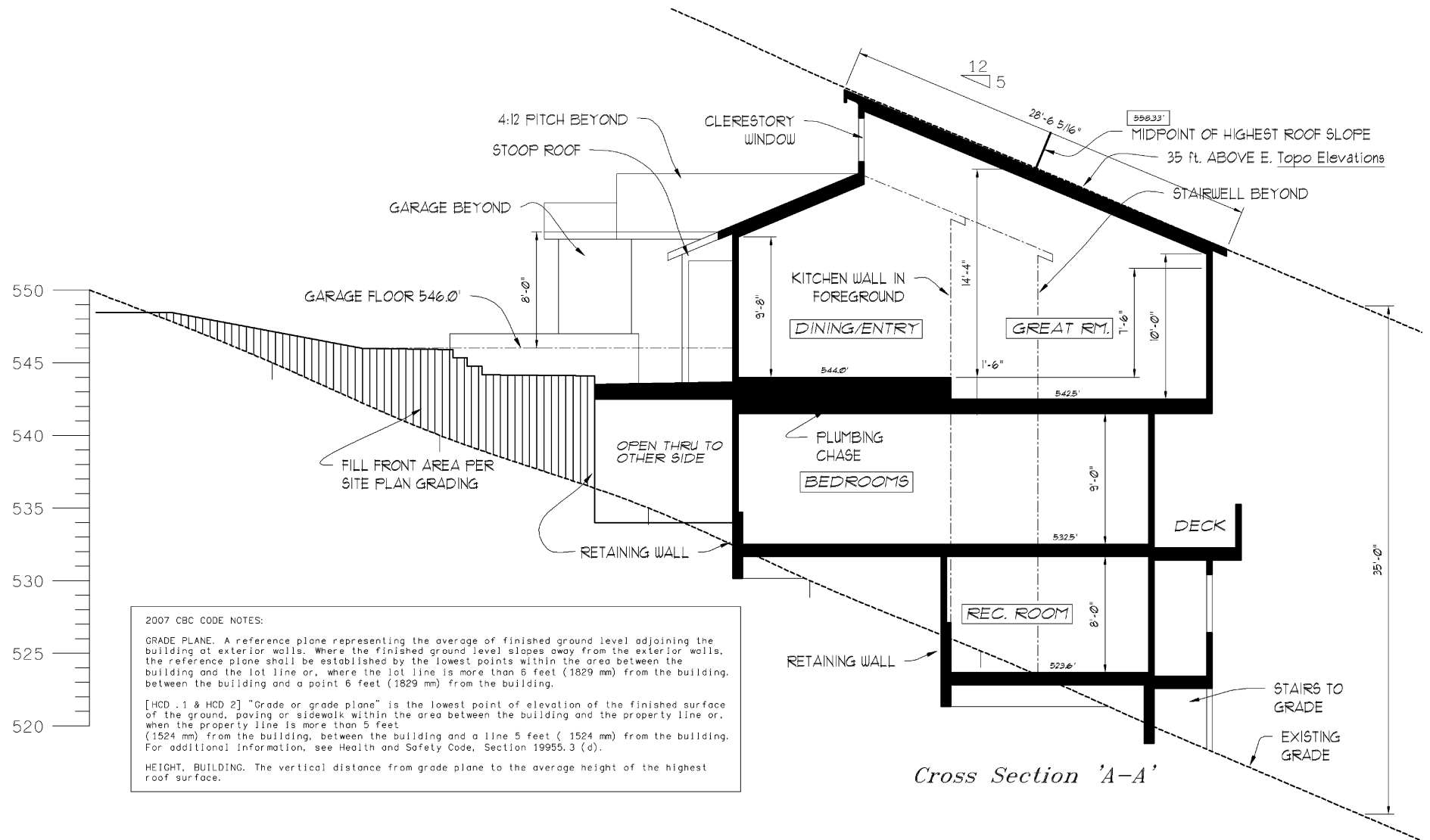
Side No.	Length	Elevation	LxE	Grade Plane
1	11.0	538.5	5.923.5	
2	21.0	533.0	11.193.0	
3	10.5	525.0	5.512.5	
4	12.0	525.5	6.306.0	
5	6.0	520.0	3.120.0	
6	12.0	520.5	6.246.0	
7	18.0	515.0	9.270.0	
8	4.0	518.5	2.074.0	
9	4.0	516.0	2.064.0	
10	19.8	521.0	10.315.8	
11	15.0	525.5	7.882.5	
12	30.5	532.0	16.226.0	
13	7.0	534.5	3.741.5	
14	11.0	536.5	5.901.5	
15	5.0	537.5	2.687.5	
Totals	186.8		98.463.8	

Ave. High Slope 558.3
 Minus Grade Plane 527.1
 Building Height: 31.2
 Max. Ht. per Zoning: 35.0

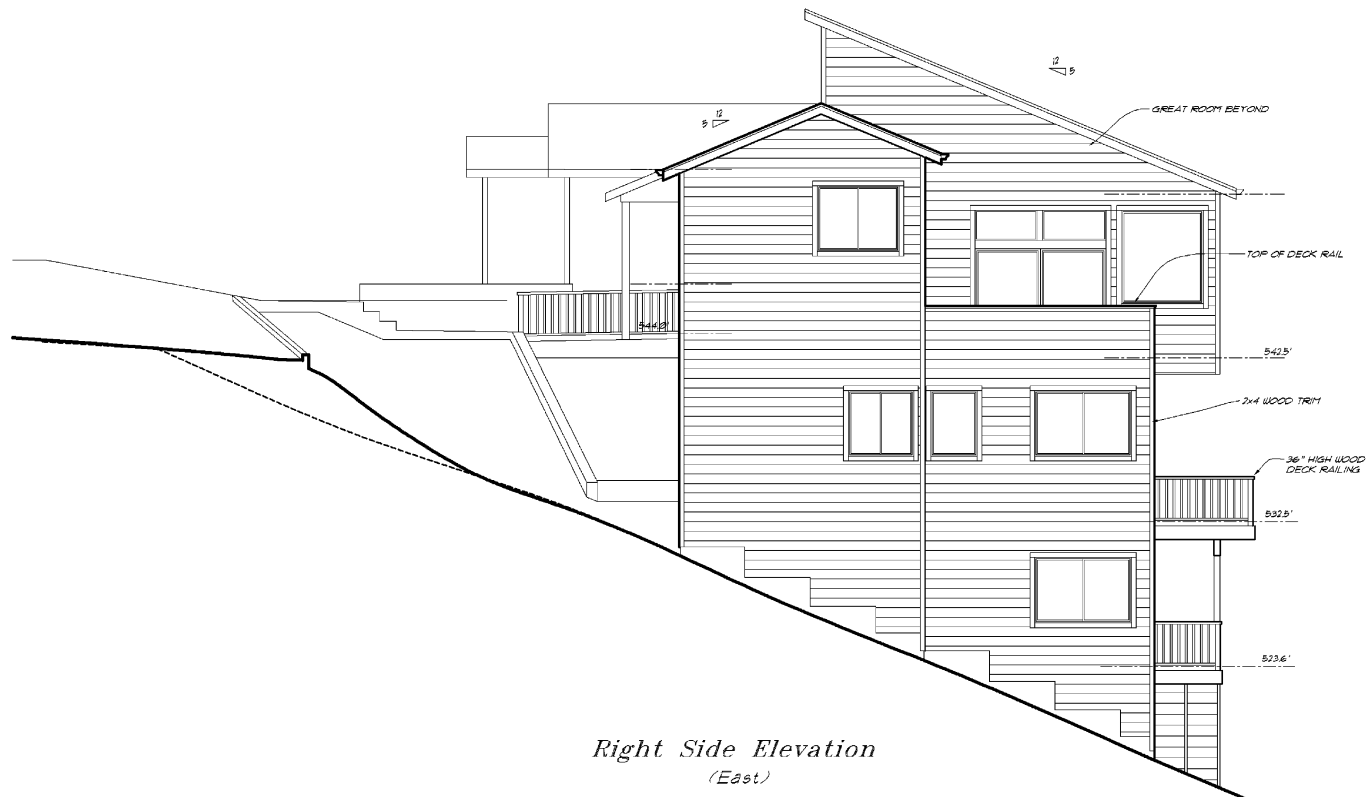
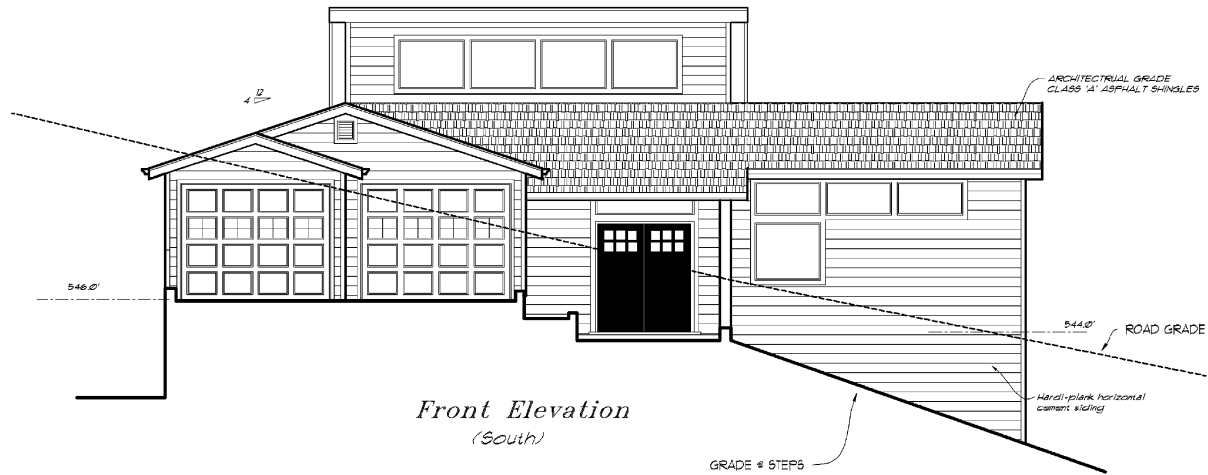
527.1



Base Grade Graphic



BURKE



BURKE

