



A Tradition of Stewardship
A Commitment to Service

Napa County Groundwater Sustainability

Creation of a Groundwater Sustainability Agency for the Napa Valley Subbasin

Napa County
Board of Supervisors
December 17, 2019

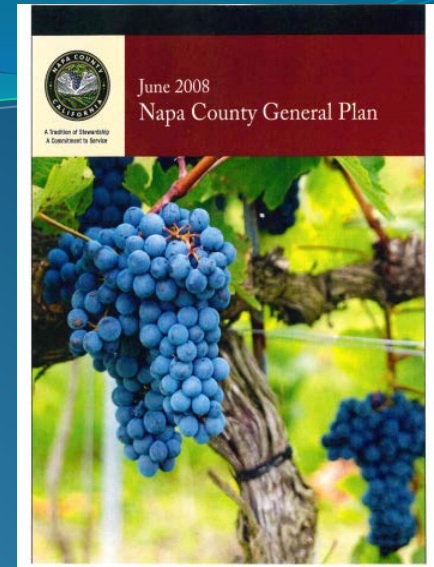


Groundwater: *Our History.....*



- Napa County and other public agencies have been monitoring groundwater resources since mid-1900's
- Napa County has taken progressive actions to protect and manage groundwater since the mid-1960s through land use zoning policies, groundwater monitoring, and permitting
- Since 2008, Napa County has been instrumental in implementing groundwater management actions to better understand groundwater conditions

Napa County General Plan Update (June 2008)

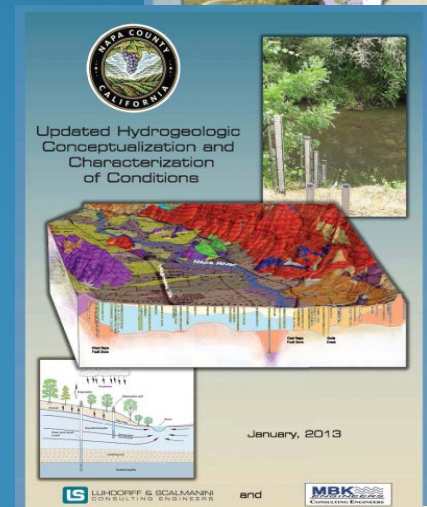
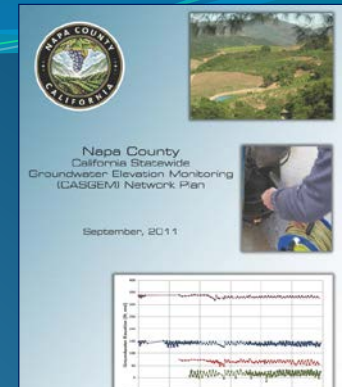


Water Resources Goals

- **Goal - CON-12:** Collect information about status of Surface and Groundwater resources for improved forecasting of supplies and effective management
 - **Action Item - CON WR-4:** Implement a countywide watershed monitoring program to assess health of County's watersheds
 - **Action Item - CON WR-8:** Monitor Surface and Groundwater interrelationships.....

Working to Improve Our Understanding of Groundwater

- **GW Resources & Monitoring** (2009)
 - Comprehensive Evaluation/Recommendations (LSCE)
- **BOS Groundwater Workshop** (Feb. 2011)
 - Report on GW Conditions/Monitoring Recommendations
 - Groundwater Resources Advisory Committee (GRAC)
- **Groundwater Monitoring Plan** (Jan 2013) and **CASGEM Plan** (Sept 2011/2014)
 - Plan addressing Long-term Monitoring Needs
- **Updated Hydrogeologic Conceptualization & Characterization of Conditions** (Jan 2013)
 - Report Addressing GW Data Gaps



Groundwater Conditions and Monitoring Recommendations

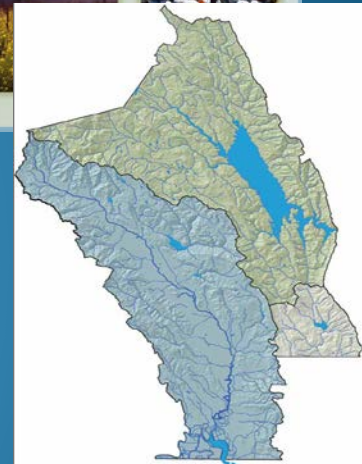
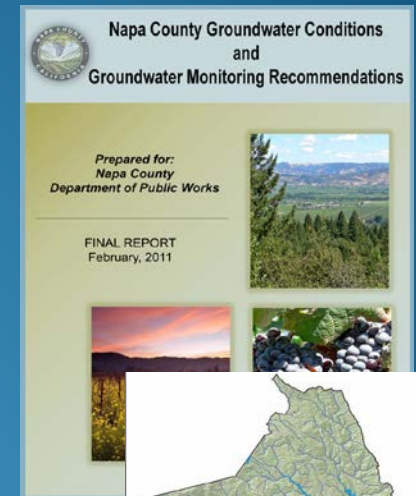


- **2009 Comprehensive GW Resources Study (LSCE)**

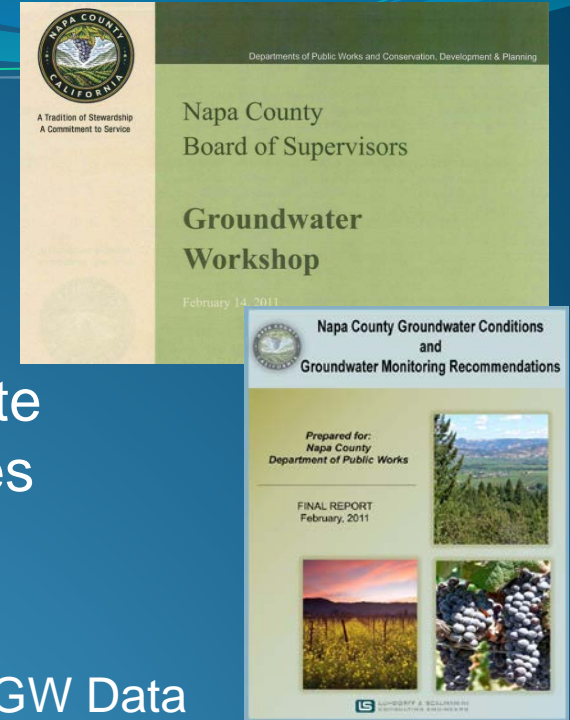
- Reconnaissance Level Evaluation
- Compiled Readily Available Data
- Evaluated Countywide Conditions

- **Provided Recommendations to:**

- Address Data Gaps – Improve Our Understanding
- Improve Data Collection/Mgmt. – County/State
- Long-Term Groundwater Monitoring Program



Napa County Groundwater Workshop 2011

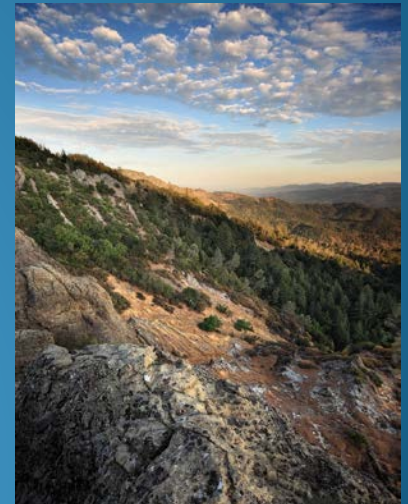


- BOS Workshop on February 14, 2011 - update and recommendations from consultant studies
 - Napa County GW Conditions & GW Monitoring Recommendations (LSCE Feb. 2011)
 - Assessment of the Feasibility of a Collaborative GW Data Gathering Effort in Napa County (CCP/CSUS Aug. 2010)
- Both studies identified need for collaborative data gathering and suggested community advisory committee to guide effort
- Draft Purpose & Composition for a Groundwater Resources Advisory Committee developed
 - Endorsed by WICC Board on May 26, 2011

Groundwater Resources Advisory Committee (GRAC)



- GRAC created in 2011
- Advisory committee to the Board of Supervisors
- Membership
 - Diverse community representation
 - 15 members comprised of:
 - Farming/Agriculture Industry
 - Environmental Interest Groups
 - Business/Wine Industry



GRAC - Working to Improve Our Understanding of Groundwater

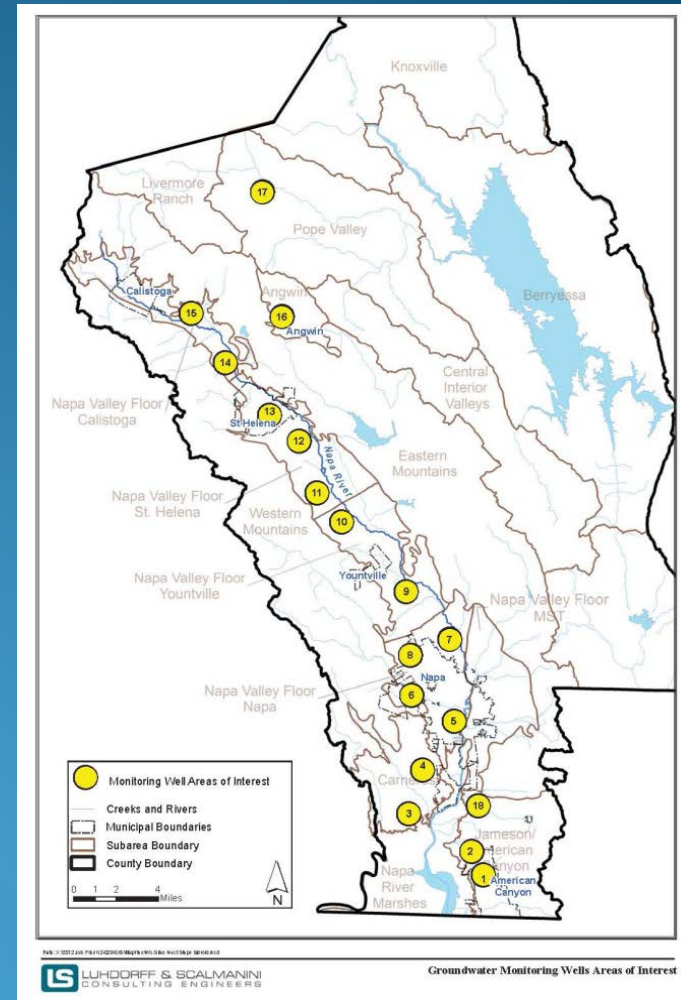
- Groundwater Monitoring Plan (Jan 2013) and CASGEM Plan (Sept 2011)
 - Addressing Long-term Monitoring Needs
- Updated Hydrogeologic Conceptualization & Characterization of Conditions (Jan 2013)
 - Report Addressing GW Data Gaps
- Groundwater Data Management and Disclosure Guidance Document (Jan 2013)
- Communication and Education Plan



Groundwater Monitoring

- Expanded the monitoring well network as recommended
- Aligns groundwater monitoring with County water resources goals
- Addresses identified data gaps
- Coordinates data collection with State/Federal entities
- Incorporates data into a locally secure system

GW Monitoring Areas of Interest (AOI)



Napa County Groundwater Sustainability Objectives 2014



Groundwater Sustainability *(definition)*

Groundwater sustainability depends on the development and use of groundwater in a manner that can be maintained indefinitely without causing unacceptable economic, environmental, or social consequences, while protecting economic, environmental, and social benefits.

- As such, groundwater sustainability is both a goal and a process.
- Groundwater sustainability is a shared responsibility of everyone that lives and works in the County.

Groundwater Resources Advisory Committee (GRAC)



Sustainable Groundwater Management Act (SGMA)



- Signed into law Sept. 16, 2014 by Governor Brown
 - Three-bill package that collectively created a new structure for sustainable management of California's groundwater basins. (Senate Bill (SB) 1168, Assembly Bill (AB) 1739, and SB 1319)
- Represented a significant change in State's history of water management, providing framework and authority at the Local and State level to advance groundwater management planning.
- A central feature of the Act is the recognition that **groundwater management in California is best accomplished locally.**
- Establishes a **definition** of sustainable groundwater management, provides local agency authority, **prioritizes basins** with the greatest need, and sets a **timeline** for implementation.



Groundwater Sustainability: Basin Analysis Report-Alternative

- A local agency or GSA may elect to submit an Alternative that demonstrates the basin is being managed sustainably by January 1, 2017 and every five years thereafter.
 - On March 3, 2015 the Board of Supervisors carefully considered SGMA implementation and directed staff to pursue the Alternative option, which would allow us to act sooner rather than later and was cost effective.
- In December 2016, the Board of Supervisors approved the 2016 Napa Valley Subbasin Basin Analysis Report (BAR) and submitted to the CA Department of Water Resources (DWR) as an Alternative Groundwater Sustainability Plan

Groundwater Sustainability



Napa County's Alternative GSP

- Submitted in 2016 as a proactive effort intended to support the legislative intent of SGMA
- Our local groundwater sustainability efforts were well in advance of the Jan. 31, 2022 SGMA deadline for GSPs

On-going GW Sustainability efforts included:

- October 2017 - NE Napa Study Area Report
- March 2018 - Annual GW Conditions Report and Amendment to 2016 Basin Analysis Report (alt)
- March 2019 – Annual GW Conditions Report



Review by DWR

- From January 2017-July 2019 - ongoing review by DWR with expected completion by mid-2017, then “underway/date pending”
- On July 17, 2019, the County received a tentative determination from DWR not to approve the 2016 Napa Valley Subbasin Basin Analysis Report (BAR) - Alternative GSP (30 days to respond)
- On August 13, 2019 the County received a 45-day extension of time, until Sept. 30, 2019, to respond to tentative determination.
 - Extension of time later amended by DWR to October 11, 2019.
- On October 11, 2019 the County submitted a comprehensive response to DWR's initial determination providing additional clarifications and requesting approval of the Alternative GSP

DWR Determination

- On November 13, 2019 the County received notification from DWR that it had completed its review of the County's Alternative-Groundwater Sustainability Plan and comprehensive responses to DWR's July 17, 2019 letter.
- DWR elected not to approve the County's Alternative GSP while also recognizing and acknowledging that Napa County is proactively managing groundwater,
 - DWR's decision was not a judgement on the health or management of the basin, as they noted in their findings.
 - DWR also clarified that its decision is not an indication that the Napa Valley Subbasin is being managed unsustainably and commended the County for proactively managing groundwater.

Groundwater Sustainability Agency (GSA) Formation or SWRCB Oversight

- As a result of DWR's decision, a Groundwater Sustainability Agency (GSA) must be formed for the Napa Valley Subbasin in order to be in compliance with SGMA and DWR regulations as the entire subbasin is now considered "unmanaged."
- If a GSA is not formed, then the State Water Resources Control Board (SWRCB) has an obligation to step in to manage the subbasin (includes incorporated and unincorporated areas)
- The SWRCB could require groundwater users to install meters, report extractions, and pay fees to cover state costs.



Napa County GSA Formation



- Under Water Code section 10724, the County is presumed to be the GSA for areas in the Subbasin designated "unmanaged"
- Unmanaged means not within the management area of a GSA
- SGMA still requires the County to give notice to DWR that it intends to undertake sustainable groundwater management and serve as the GSA in the "unmanaged" areas following the procedures of sections 10723 and 10723.8.

Napa County GSA Formation

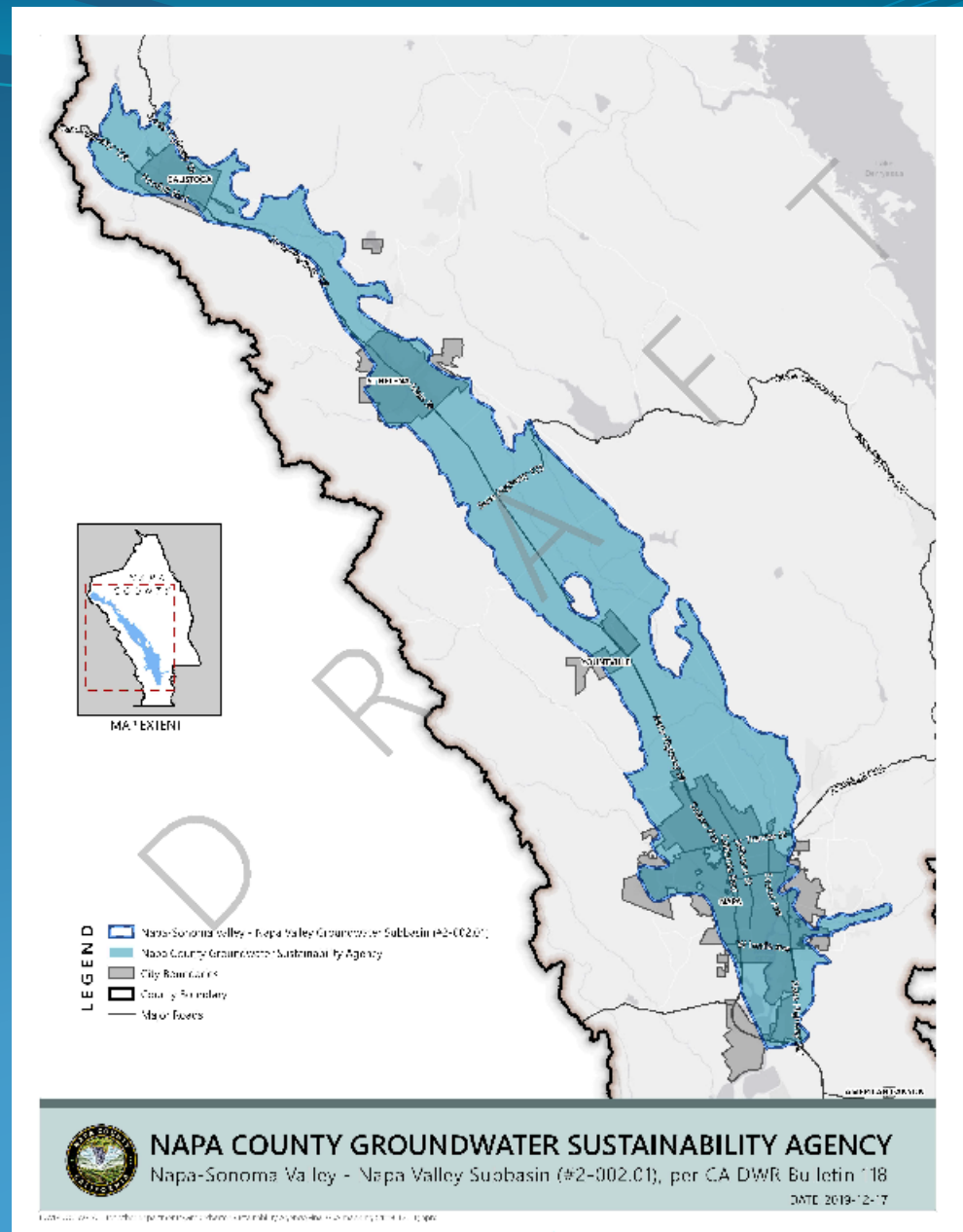
- The item before the Board today is to conduct a public hearing under Water Code section 10723, to:
 - 1) Consider adoption of a resolution affirming Napa County's intention to manage groundwater in the Napa Valley Subbasin (Exhibit A-Map)
 - 2) Form the Napa County Groundwater Sustainability Agency pursuant to Water Code section 10724
 - 3) Authorize submittal of GSA Formation and related information to DWR within 30 days

Napa County GSA

Napa-Sonoma Valley Napa Valley Subbasin

Napa Valley Subbasin (2-002.01)
CA DWR Bulletin 118

Exhibit A-Map



Napa County GSA Recommendation Summary

If the Board of Supervisors approves the recommended actions:

County staff would file notice with DWR and provide the required notification items regarding its intent to undertake sustainable groundwater management and serve as the GSA for the Napa Valley Subbasin (Exhibit A-Map)