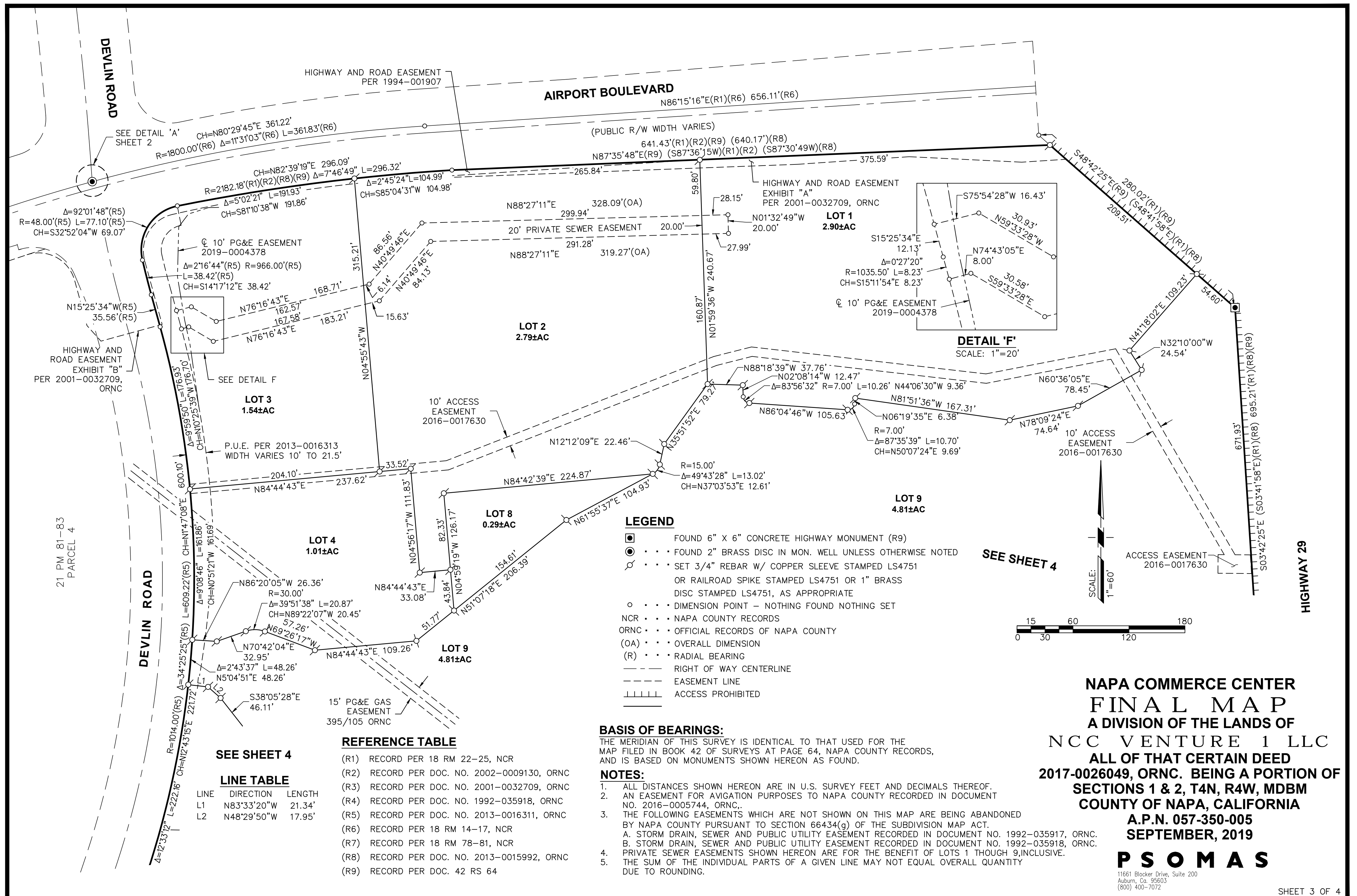


VICINITY MAP

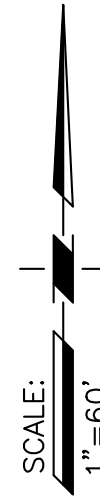
NO SCALE



NAPA COMMERCE CENTER
FINAL MAP
A DIVISION OF THE LANDS OF
NCC VENTURE 1 LLC
ALL OF THAT CERTAIN DEED
2017-0026049, ORNC. BEING A PORTION OF
SECTIONS 1 & 2, T4N, R4W, MDBM
COUNTY OF NAPA, CALIFORNIA
A.P.N. 057-350-005
SEPTEMBER, 2019

PSOMAS

11661 Blocker Drive, Suite 200
Auburn, Ca. 95603
(800) 400-7072



SEE SHEET 3

LOT 9
4.81±AC

SEE SHEET 3

REFERENCE TABLE

- (R1) RECORD PER 18 RM 22-25, NCR
(R2) RECORD PER DOC. NO. 2002-0009130, ORNC
(R3) RECORD PER DOC. NO. 2001-0032709, ORNC
(R4) RECORD PER DOC. NO. 1992-035918, ORNC
(R5) RECORD PER DOC. NO. 2013-0016311, ORNC
(R6) RECORD PER 18 RM 14-17, NCR
(R7) RECORD PER 18 RM 78-81, NCR
(R8) RECORD PER DOC. NO. 2013-0015992, ORNC
(R9) RECORD PER DOC. 42 RS 64

NOTES:

- ALL DISTANCES SHOWN HEREON ARE IN U.S. SURVEY FEET AND DECIMALS THEREOF.
- AN EASEMENT FOR AVIGATION PURPOSES TO NAPA COUNTY RECORDED IN DOCUMENT NO. 2016-0005744, ORNC.
- THE FOLLOWING EASEMENTS WHICH ARE NOT SHOWN ON THIS MAP ARE BEING ABANDONED BY NAPA COUNTY PURSUANT TO SECTION 66434(g) OF THE SUBDIVISION MAP ACT.
A. STORM DRAIN, SEWER AND PUBLIC UTILITY EASEMENT RECORDED IN DOCUMENT NO. 1992-035917, ORNC.
B. STORM DRAIN, SEWER AND PUBLIC UTILITY EASEMENT RECORDED IN DOCUMENT NO. 1992-035918, ORNC.
- PRIVATE SEWER EASEMENTS SHOWN HEREON ARE FOR THE BENEFIT OF LOTS 1 THROUGH 9, INCLUSIVE.
- THE SUM OF THE INDIVIDUAL PARTS OF A GIVEN LINE MAY NOT EQUAL OVERALL QUANTITY DUE TO ROUNDING.

ACCESS EASEMENT
2016-0017630

HIGHWAY 29

21 PM 81-83
PARCEL 4

DEVLIN ROAD

LOT 9
4.81±AC

LOT 5
5.01±AC

LOT 7
9.77±AC

LOT 6
4.38±AC

BASIS OF BEARINGS:

THE MERIDIAN OF THIS SURVEY IS IDENTICAL TO THAT USED FOR THE MAP FILED IN BOOK 42 OF SURVEYS AT PAGE 64, NAPA COUNTY RECORDS, AND IS BASED ON MONUMENTS SHOWN HEREON AS FOUND.

LEGEND

- FOUND 6" X 6" CONCRETE HIGHWAY MONUMENT (R9)
- FOUND 2" BRASS DISC IN MON. WELL UNLESS OTHERWISE NOTED
- SET 3/4" REBAR W/ COPPER SLEEVE STAMPED LS4751 OR RAILROAD SPIKE STAMPED LS4751 OR 1" BRASS DISC STAMPED LS4751, AS APPROPRIATE
- DIMENSION POINT - NOTHING FOUND NOTHING SET
- NCR - NAPA COUNTY RECORDS
- ORNC - OFFICIAL RECORDS OF NAPA COUNTY
- (OA) - OVERALL DIMENSION
- (R) - RADIAL BEARING
- RIGHT OF WAY CENTERLINE
- EASEMENT LINE
- ACCESS PROHIBITED

15' P.U.E.

CENTERLINE AVIATION WAY (R1)
ABANDONED

DETAIL 'D'
SCALE: 1"=10'

DETAIL 'E'
SCALE: 1"=20'

Δ=1°08'33"(R9) (Δ=1°09'18")(R1)(R8)
R=10090.00'(R1)(R8)(R9)
L=201.22'(R9) (203.40')(R1)(R8)
CH=S4°16'44"E 201.22'

S02°53'57"W(R9) (S02°54'54"W)(R1)(R8)
50.91'(R9) (50.75')(R1)(R8)

S33°17'25"W(R9)(S33°18'22"W)(R1)(R4)(R8)
79.67'(R1)(R8)(R9)

S05°25'30"E(R9)
(S05°36'04"E)(R1)(R4)(R8)
34.98'(R9) (25.20')(R4)(R8)

SEE DETAIL 'B'
SHEET 2

SHEET 4 OF 4