



A Tradition of Stewardship
A Commitment to Service

A Look Back

*Supervisor Keith Caldwell
District 5
(2008-2016)*

December 20, 2016





A Tradition of Stewardship
A Commitment to Service

NAPA PIPE





A Tradition of Stewardship
A Commitment to Service

NAPA PIPE

II.1 LAND USE PLAN

Figure II.1.a - LAND USE PLAN (Term Sheet Exhibit 2)

KEY TO LAND USES

- Publicly Accessible Parks and Open Space
- Farm
- Seniors Housing (CCRC)
- Ground-Floor Retail (Residential Above)
- Community Buildings
- Hotel and Accessory Uses
- Office, R&D, Warehouse, and/or Light Industrial Uses
- Membership Warehouse Club Retail
- Mixed Residential Apartments, Condominiums
- Affordable Housing Site
- Study Area
- Possible School Site





A Tradition of Stewardship
A Commitment to Service

MST - RECYCLED WATER

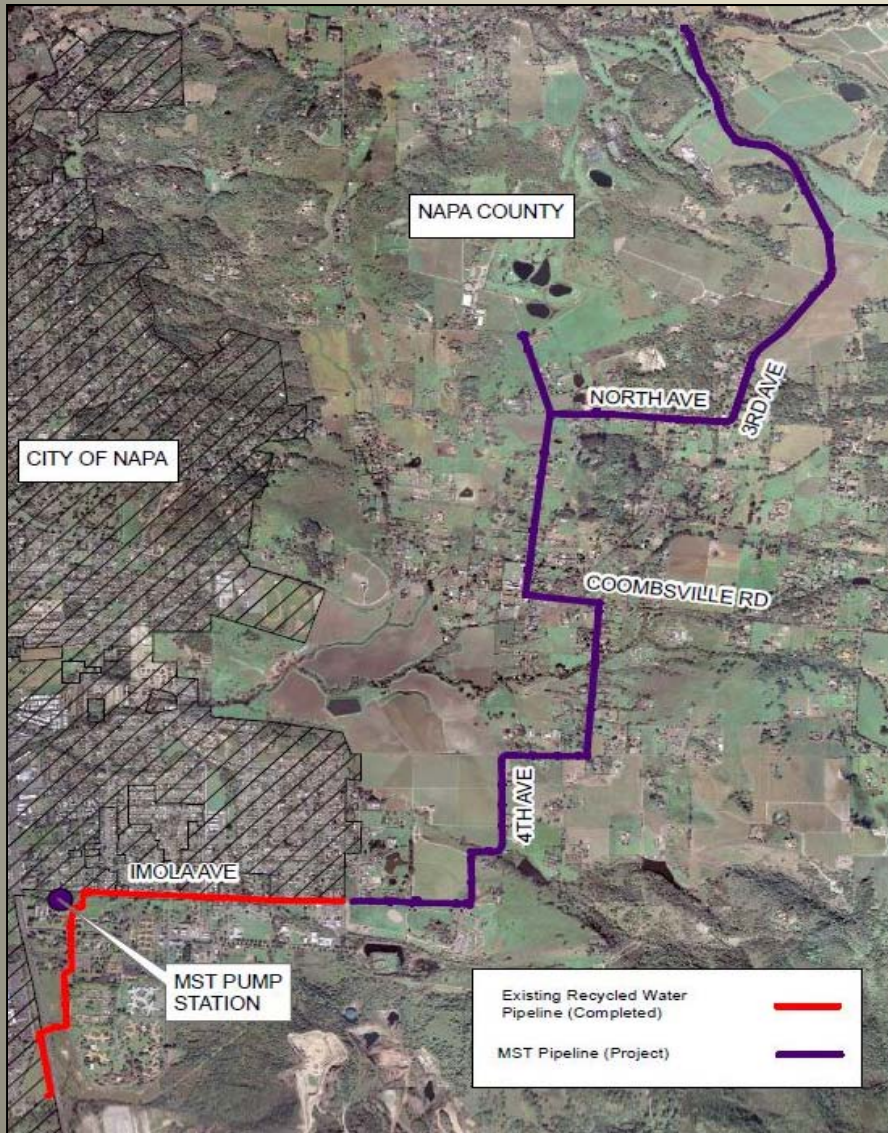


- MST basin - groundwater aquifer overdrafted by about 2,000 acre feet per year
- Pipeline - will be able to deliver enough water to offset up to 35 percent of that overdraft
- Percentage will only grow as more people opt in to use the water



A Tradition of Stewardship
A Commitment to Service

MST - RECYCLED WATER



MST Pipeline:

- 4.5 miles
- 700 acre feet per year
- 250 acre feet potable water offset
- Community Facilities District (CFD) to finance the MST Recycled Water Pipeline Project was formed in December 2012



A Tradition of Stewardship
A Commitment to Service

DEVLIN ROAD EXTENSION





A Tradition of Stewardship
A Commitment to Service

DEVLIN ROAD EXTENSION

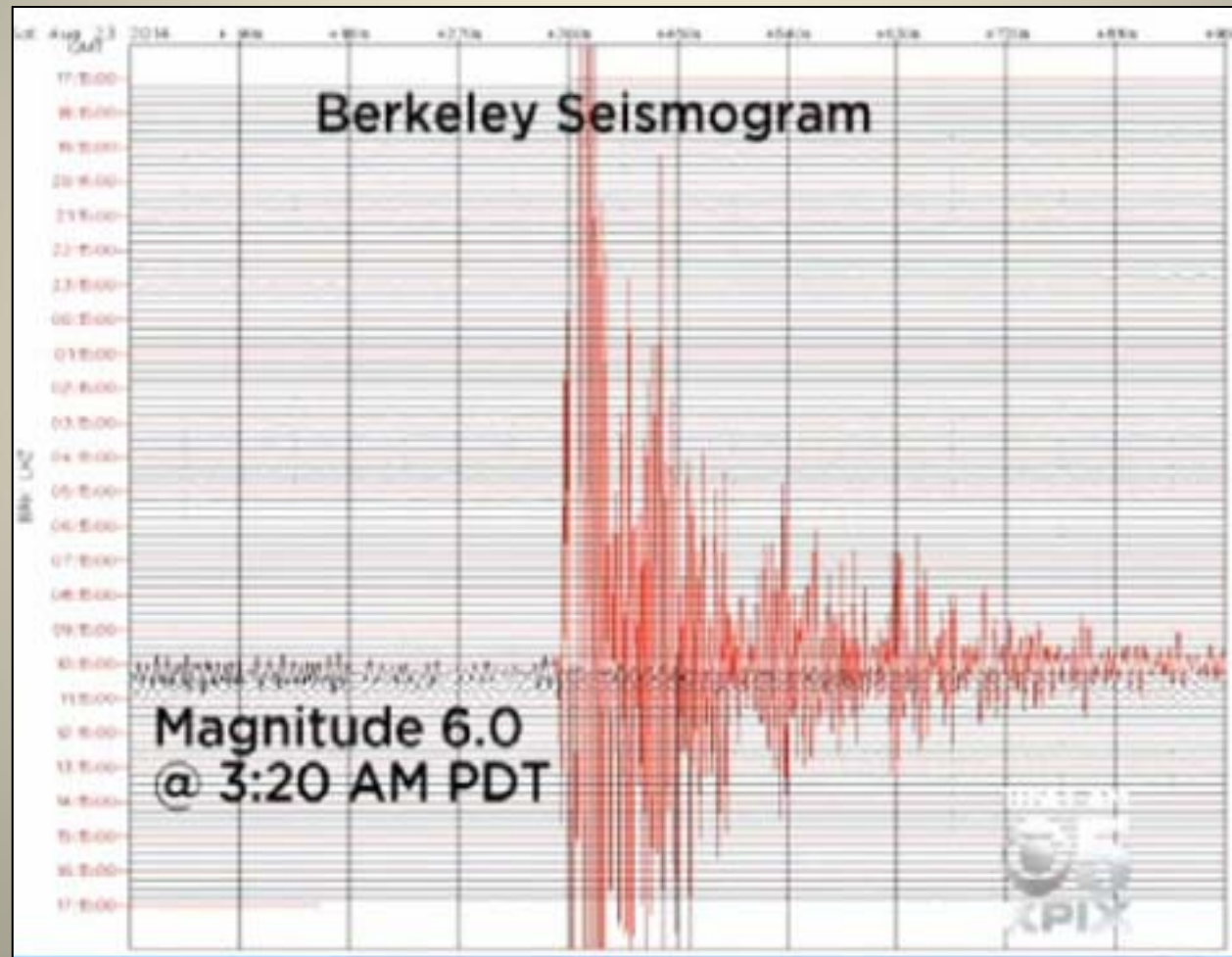




A Tradition of Stewardship
A Commitment to Service

SOUTH NAPA EARTHQUAKE

3:20 a.m. August 24, 2014





A Tradition of Stewardship
A Commitment to Service

MOMENT OF IMPACT

3:20 a.m. August 24, 2014





A Tradition of Stewardship
A Commitment to Service

SOUTH NAPA EARTHQUAKE

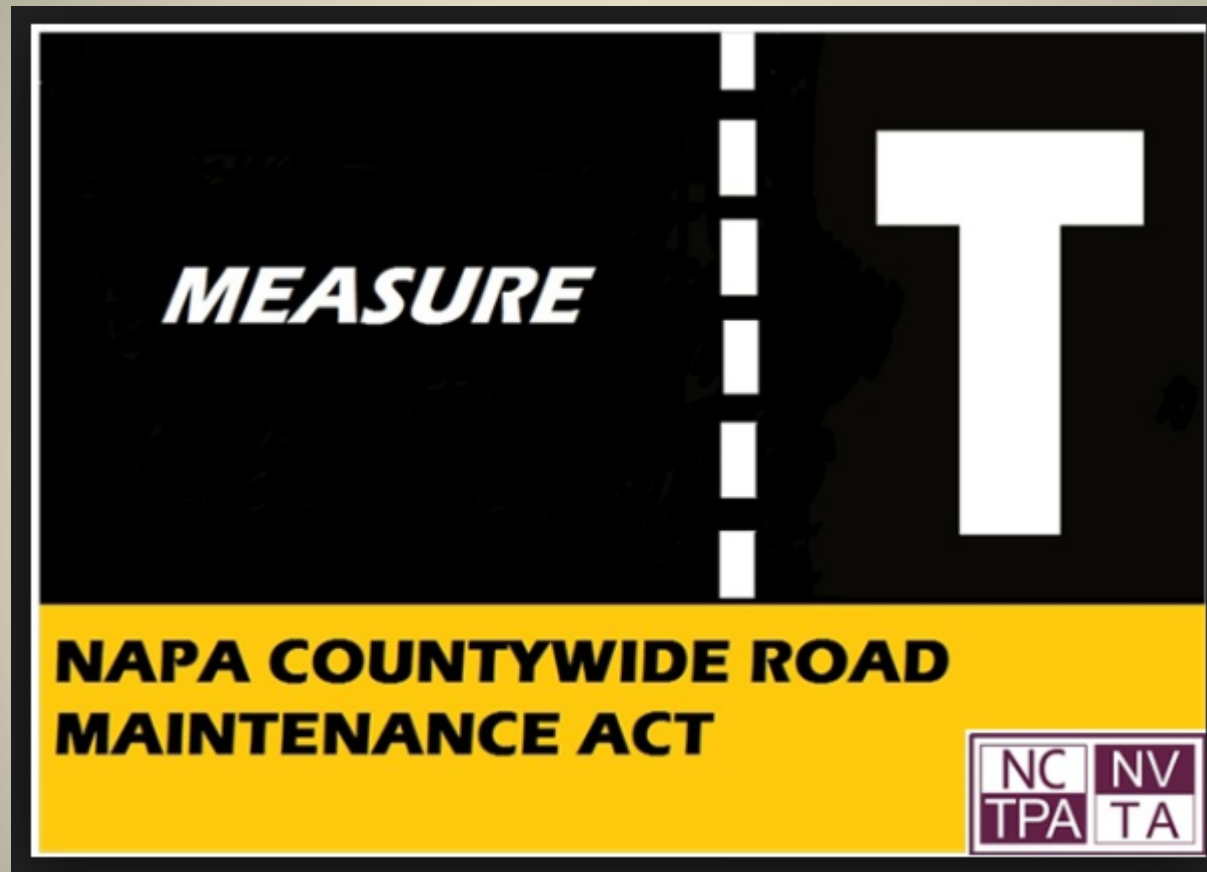
August 24, 2014





A Tradition of Stewardship
A Commitment to Service

MEASURE T



November 6, 2012 – One-half cent sales tax to pay for Napa roads upgrade and repair



A Tradition of Stewardship
A Commitment to Service

HHS IN AMERICAN CANYON



NEED:

- 14% of all Napa County residents receiving public benefits reside in American Canyon
- 45% is the increased caseload growth rate for public benefits in the city since 2007
- Highest rate in Napa County for unemployment, foreclosures and public assistance caseload growth



A Tradition of Stewardship
A Commitment to Service

HHS IN AMERICAN CANYON



PROGRAMS:

- ✓ **Med-Cal** – health care coverage
- ✓ **Food stamps** – groceries
- ✓ **CalWorks** – job training and placement



A Tradition of Stewardship
A Commitment to Service

NVTA TRANSIT CENTER



- **December 2012 – Transit Center opens:** First time in the history of the County of Napa that both the Transit Center and administrative headquarters are in the same location



A Tradition of Stewardship
A Commitment to Service

MEASURE AA



- **\$12 per parcel tax** – On November 8, 2016, nine-county Bay Area counties approved a new \$12-per-parcel tax that will raise millions of dollars for bay enhancement and habitat restoration
- **\$500 million to be raised** - Grants from the \$500 million raised from the parcel tax over the next 20 years will begin to be distributed in 2018 and could attract additional state and federal funds



A Tradition of Stewardship
A Commitment to Service

LAKE BERRYESSA-NAPA BERRYESSA

Resort Improvement District Milestones

- Membrane Filter Plant - \$1.7M ARRA
- Sewer Collection / Storage Ponds - \$5.2M Bonds
- Wastewater Storage / Lift Stations - \$6.0M CWSRF
- Water Storage Tanks - \$1.5M CDBG
- Sewer Force Main / Recycle Water - \$1.1M Prop 84

CIP Total - \$15.5M

- Water Treatment Plant - \$3.0M USDA
- Membranes WW Treatment / Storage - \$8.0M USDA

CIP Total - \$11.0M





A Tradition of Stewardship
A Commitment to Service

NEW FIRE STATIONS – LB & NB





A Tradition of Stewardship
A Commitment to Service

SUPPORTING NONPROFITS

Annual Recover Rally, Napa County Law & Fire Chaplaincy, Farmworker Housing



- Annual Recover Rally
- Napa County Law & Fire Chaplaincy
- Farmworker Housing Golf Tournament



A Tradition of Stewardship
A Commitment to Service

CALDWELL COUNTY





A Tradition of Stewardship
A Commitment to Service

PUBLIC WORKS





A Tradition of Stewardship
A Commitment to Service

ROADS DEPARTMENT





A Tradition of Stewardship
A Commitment to Service

ROADS DEPARTMENT





A Tradition of Stewardship
A Commitment to Service

FIRE DEPARTMENT





A Tradition of Stewardship
A Commitment to Service

FIRE DEPARTMENT





A Tradition of Stewardship
A Commitment to Service

LAW ENFORCEMENT





A Tradition of Stewardship
A Commitment to Service

WATER DEPARTMENT





A Tradition of Stewardship
A Commitment to Service

MENTAL HEALTH DEPARTMENT





A Tradition of Stewardship
A Commitment to Service

GROUNDS MAINTENANCE





A Tradition of Stewardship
A Commitment to Service

COUNTY GOVERNMENT





A Tradition of Stewardship
A Commitment to Service

RIDING OFF INTO THE . . .





A Tradition of Stewardship
A Commitment to Service

SUNSET





A Tradition of Stewardship
A Commitment to Service

END OF PRESENTATION