

# Napa County Fire Department

Scott Upton

Napa County Fire Chief

# Insurance Services Office

- Collects information as it relates to structure fire protection within communities.
- Utilizes a Public Protection Classification System on a scale from 1 - 10.
- Napa County currently is classified as a “split 6 – 8B”

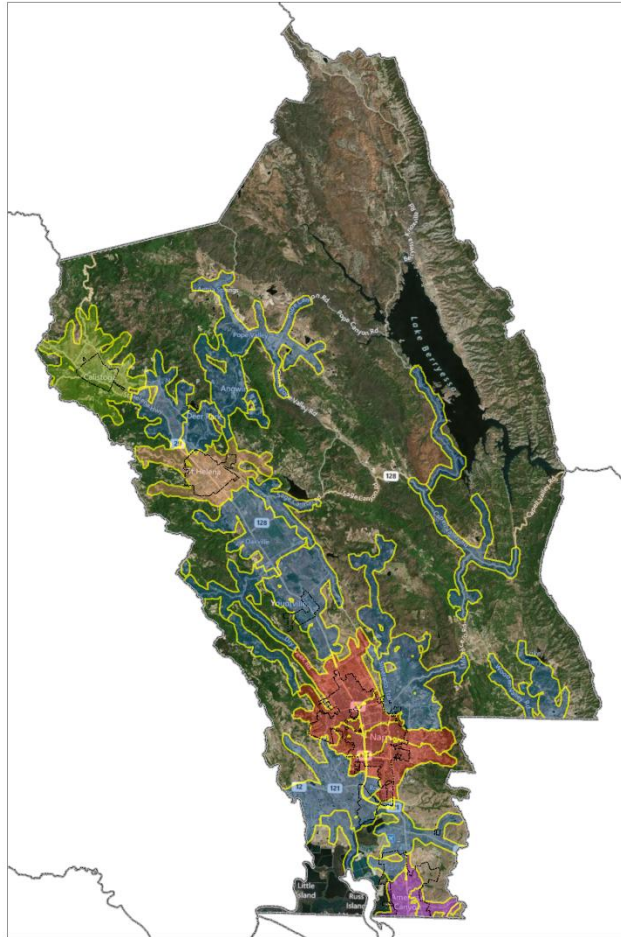
# Insurance Services Office

- Basic criteria for the Public Protection Classification system is distance from a recognized fire station and distance from a water supply.
- Greater than Five road miles from a fire station you are classified less than the minimum recognized protection.
- Important to note that all areas of Napa County receive service when an emergency occurs.

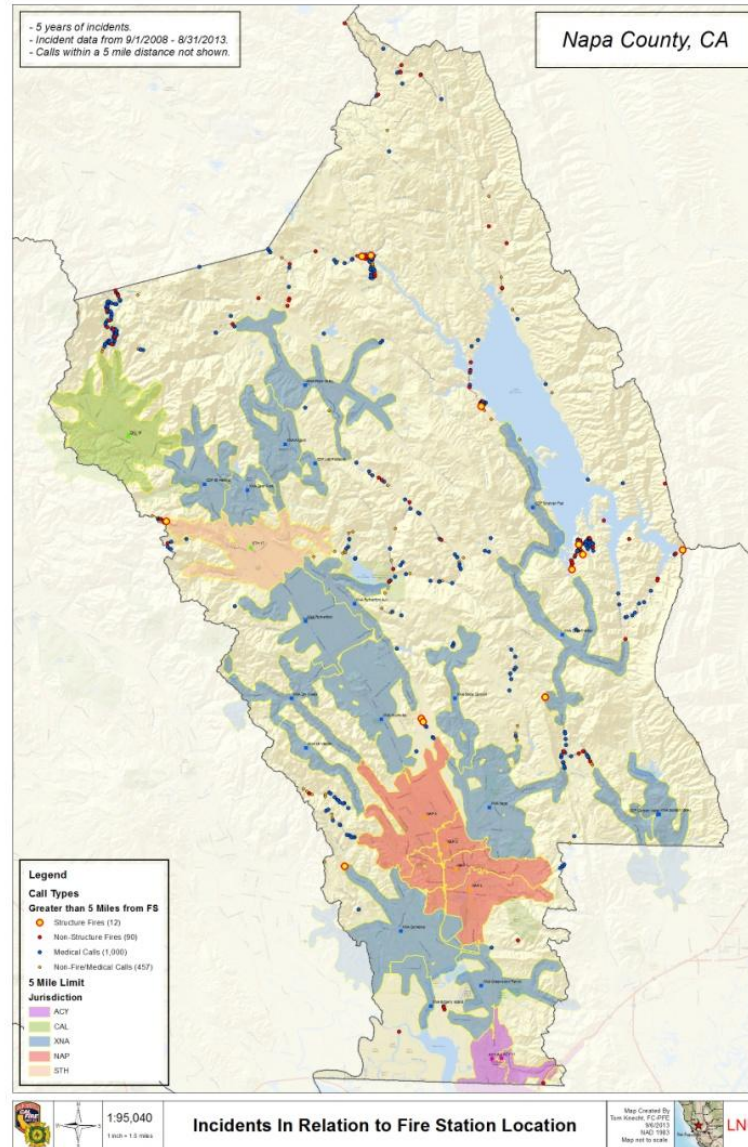
# Insurance Services Office

- Greater than 1000' from a recognized water system, normally a hydrant with a minimum flow of 250 gallons per minute.
- Such areas may receive a class 8B or 9 depending on alternate sources of water. Fire department water tender and fire engines are alternate sources.

# Coverage Area



# Coverage Area with Calls



# Incidents

- From 9/1/2008 - 8/31/2013
- Total 16,347.00
- Total number of structure fires outside the five road miles from a current county or contract station:  
10
- Percentage of structure fires outside five road miles from a current county or contract station:  
0.000734

# Additional Stations

- Both Berryessa Highlands and Berryessa Estates are outside five road miles from a fire station.
- Both Capell and Pope Valley Volunteer Companies serve these areas.
- Additional stations will reduce response times for the volunteer companies.



# Satellite Fire Station



# Insurance

- Staff recommends shopping aggressively with several insurance carriers or brokers.
- Not all insurance companies use ISO as the determining factor for coverage.
- A change in ISO rating does not guarantee lower rates.

# Additional Fire Protection





# Additional Fire Protection





# Additional Fire Protection



# Questions?

