



EMS WEEK (MAY 20 - 26, 2012)

*"...MORE THAN A JOB. A CALLING"*



*First Annual*

# **SURVIVORS' REUNION**

FIRST ANNUAL – NAPA COUNTY  
SURVIVORS REUNION

MAY 23 – KULETO ESTATE

# NAPA COUNTY EMS AGENCY

## Annual Report

*...2011 was an exciting and important year for Napa County EMS...*



# EMS AMBULANCE FRANCHISE CONTRACT REPORT

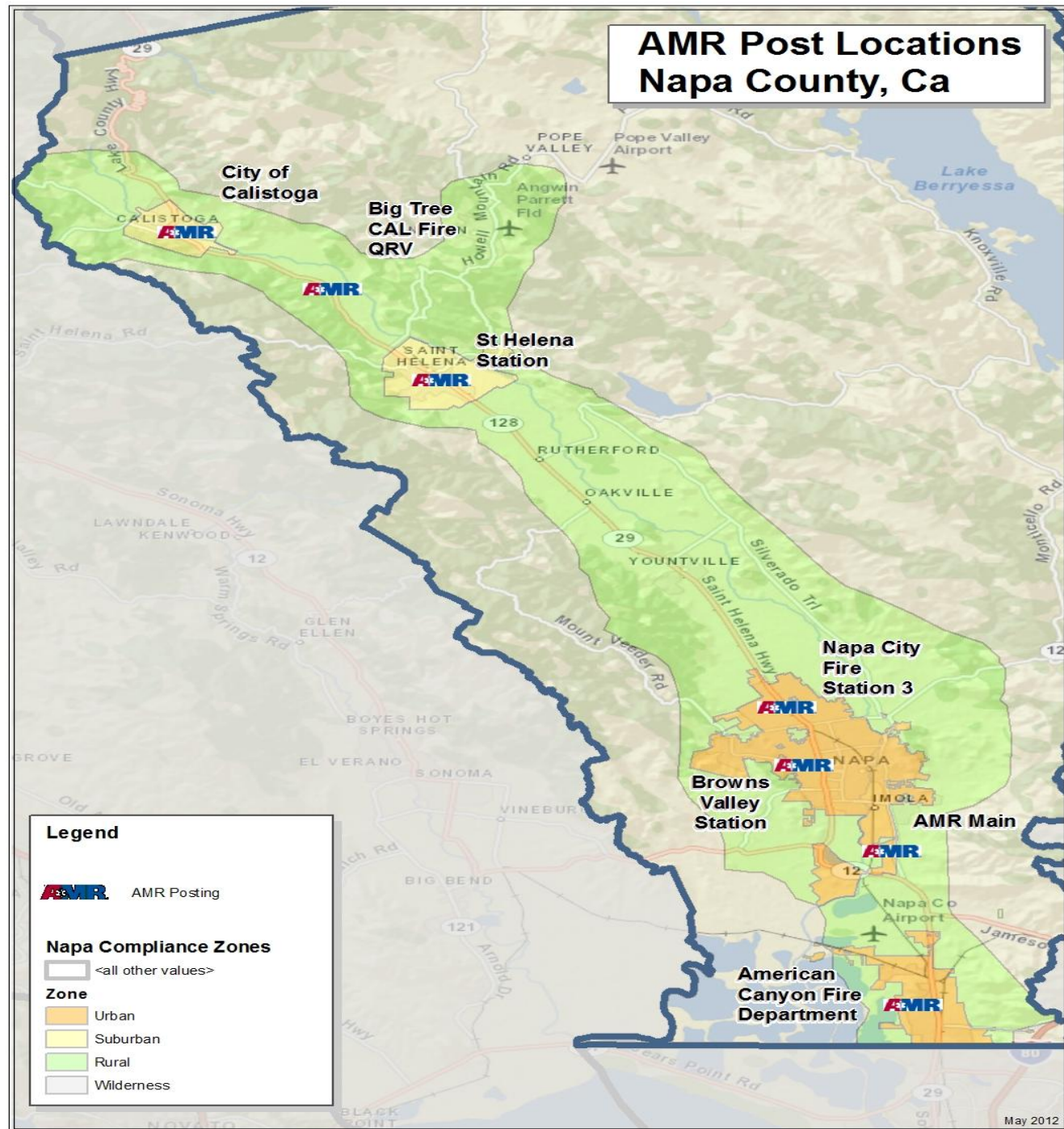


- 1 - Ambulance Response Times and ESZs – Operations
- 2 - System Status Management and Additional Resources for Our Communities
- 3 - Data Reporting Requirements In Support of Continuous System Quality Improvement



# Napa County

## System Status Management (SSM)





# GOALS 2012





A photograph of a yellow school bus with its emergency door open. Two people are visible inside the bus. Outside the bus, several emergency responders wearing high-visibility yellow vests are present. The bus is parked on a street next to a brick building. The text "SCHOOL BUS" and "EMERGENCY DOOR" are visible on the bus. The license plate "M-62196" is also visible.

# **EMERGENCY MEDICAL CARE COMMITTEE (EMCC)**

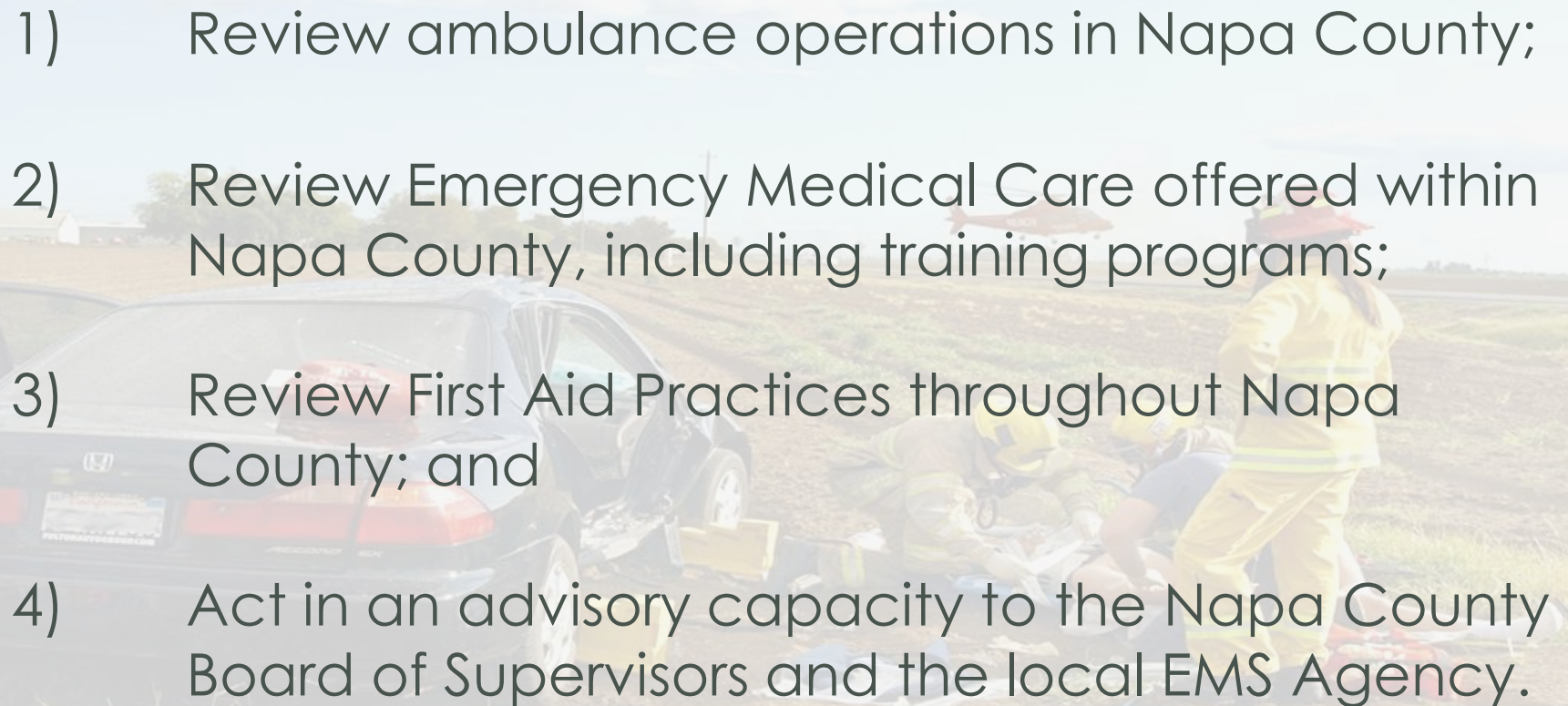
## **2011 ANNUAL REPORT**

# PURPOSE OF EMCC

- The EMCC is established by the Napa County Board of Supervisor's
- We are authorized to perform specific **functions** under the California Health and Safety Code.



# WHAT ARE OUR FUNCTIONS?

- 
- A background image showing emergency responders in yellow uniforms attending to a person on the ground next to a dark car. The scene is outdoors on a dirt road with a field in the background.
- 1) Review ambulance operations in Napa County;
  - 2) Review Emergency Medical Care offered within Napa County, including training programs;
  - 3) Review First Aid Practices throughout Napa County; and
  - 4) Act in an advisory capacity to the Napa County Board of Supervisors and the local EMS Agency.

# AMBULANCE OPERATIONS

## Ground Ambulance - Call Volume

Transports	ALS	BLS	CCT	Total
AMR	39	51	22	112
Medic Ambulance	0	137	0	137
Piner Napa Ambulance*	10,905	1,977	0	12,882
Pro-Transport	0	153	1	154
Verihealth	606	953	87	1,640
ACA	94	56	0	150

*\*Piner's data includes 911 system and non 911 transports. The others are basic life support, non emergency 911 and/or critical care transport (CCT) level responses.*

# OTHER SERVICES OFFERED BY AMBULANCE PROVIDERS

- Event Standby
- Inter-facility transfers (IFTs)
- Public Education / Community Outreach
- Lake Berryessa Coverage (Holiday Weekends)
- Committee Participation
- MCI Drill
- Continued Training / Education



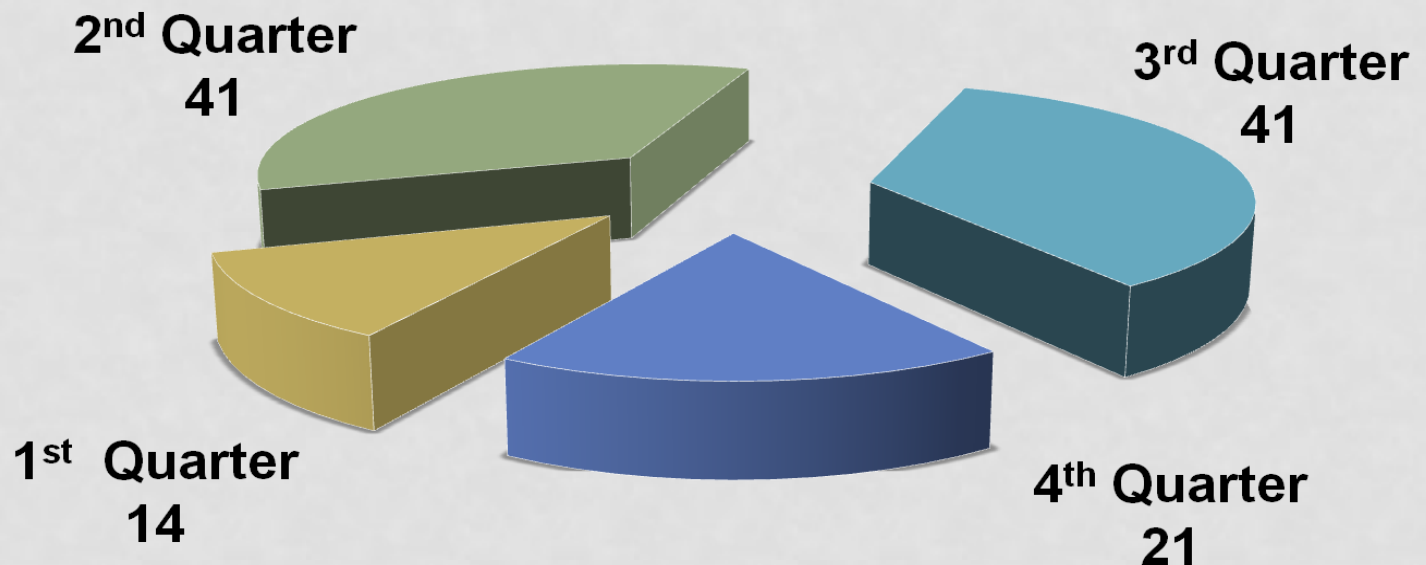
# AMBULANCE OPERATIONS

## Air Ambulance - Call Volume

Requests: 117

Transports: 55

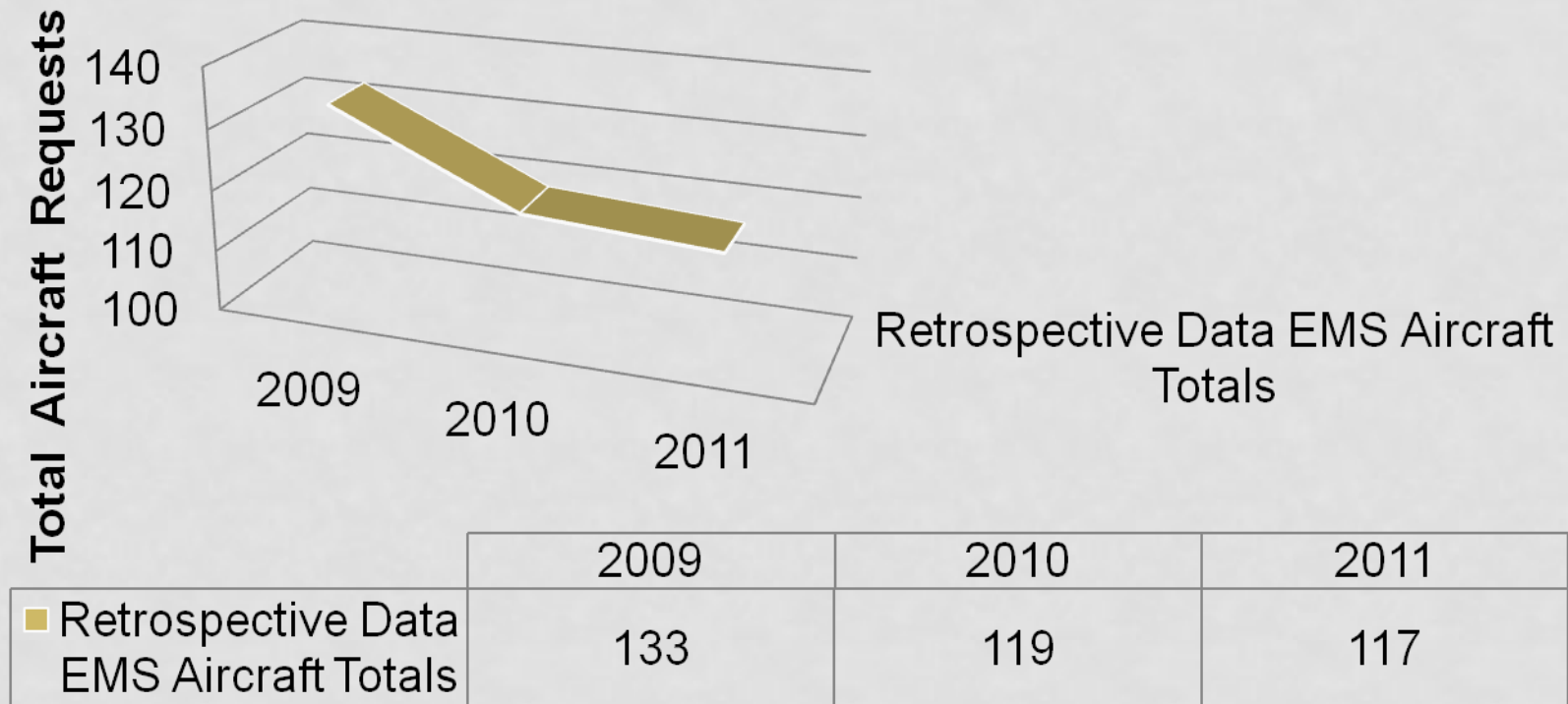
### 2011 Quarter Totals



# AMBULANCE OPERATIONS

## Air Ambulance - Call Volume

### Last 3 Years EMS Aircraft Totals



# EMERGENCY MEDICAL CARE





# TRAINING INSTITUTIONS

- **Napa Valley College**

- EMR graduates **76**
- EMT graduates **84**
- PM graduates **15**
- Specialized training includes: **ACLS / PALS / ITLS**

- **Pacific Union College**

- EMR graduates **21**
- EMT graduates **23**
- Specialized training includes: **Technical Rope Rescue / Swift Water Rescue / Emergency Wilderness Survival**

# TRAINING

- **LEMSA**

- “Train-the-Trainer” skills and treatment guideline class which centered around modern EMS and excellence in patient care.
- 12-Lead ECG Interpretation course



- **QVMC**

- Numerous Field Care Audits (FCA) were offered to pre-hospital and hospital health care professionals.

- **Napa HS ROP (2011-2012)**

- Level I (First year students) **56**
- Level II (Second year students) **4**
- Specialized training includes: ICS 100/200 and CERT Training

# EMS - CE PROVIDERS

The following agencies offer continuing education to EMS personnel:

## Approved Napa County CE Providers List

Napa County EMS Agency

Piner's Napa Ambulance Service

Napa Valley College

Vine and Branches Ministries

Pacific Union College

CAL FIRE – Napa County Fire Department

Queen of the Valley Medical Center

American Medical Response (AMR)

City of Napa Fire Department

Angwin Community Ambulance (ACA)

American Canyon Fire Department

St. Helena Fire Department



# FIRST AID PRACTICES

- **QVMC:**

- **12** Heart-saver / AED classes
- **12** Family & Friends Community CPR classes
- In collaboration with The Via Foundation, QVMC created the **Queen's Heart Safe Program** to help increase the survival rate from sudden cardiac arrest in Napa County.



- **NVC:**

- Wine Country Regional Simulation (SIMS) Center in Yountville
- **8** Heart-saver / AED classes
- Numerous healthcare provider CPR classes

# GOALS FOR 2012



- 1) Collaborate with stakeholders to provide a transparent evaluation of ambulance operations
- 2) Amend bylaws
- 3) Support continued efforts to coordinate and implement CPR/AED and first aid training throughout Napa County.

# QUESTIONS & COMMENTS

- Comments and/or suggestions?
- Are there additional goals you would like us to pursue?

