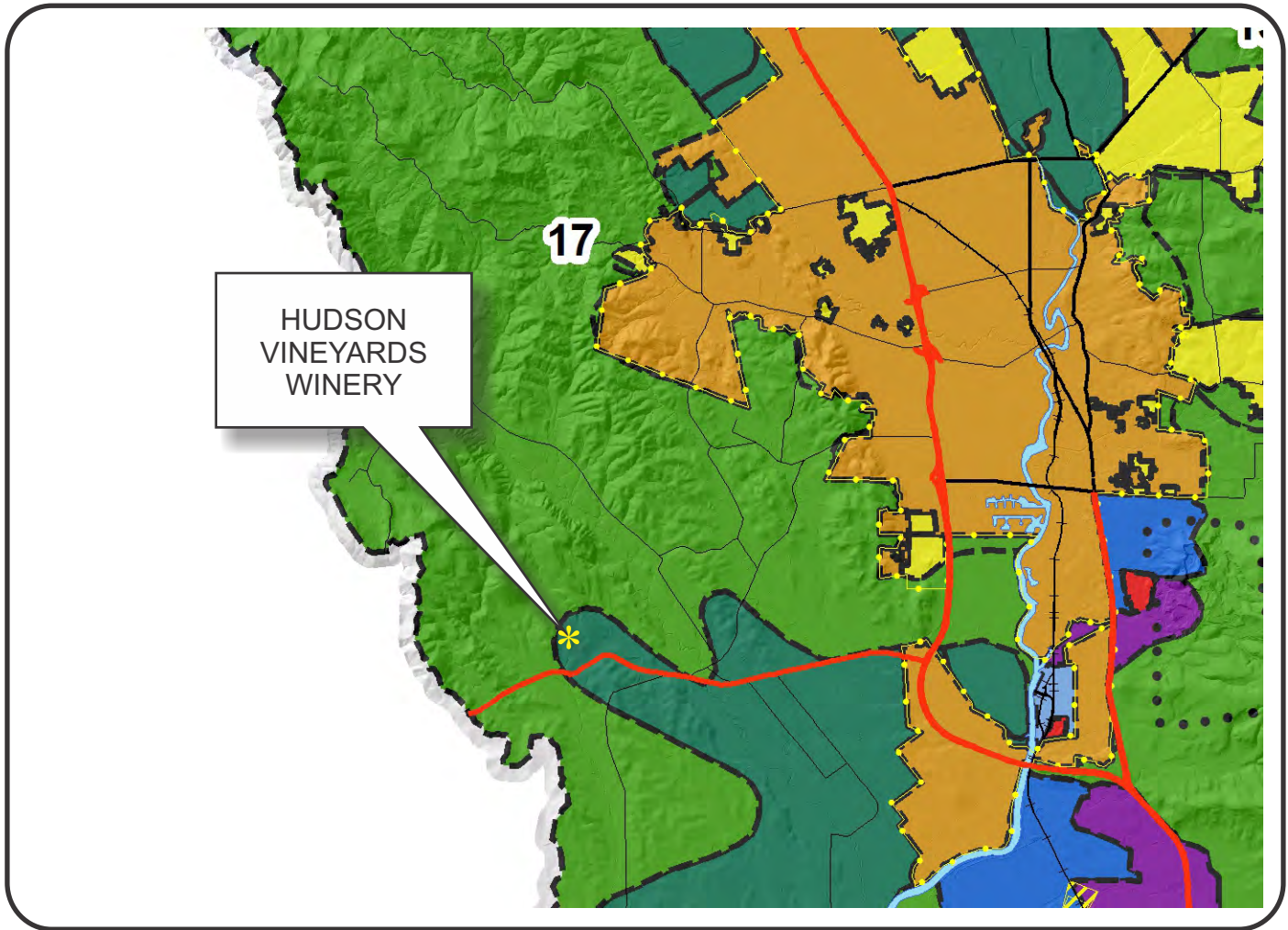









NAPA COUNTY LAND USE PLAN 2008 - 2030





LEGEND








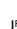


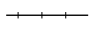

URBANIZED OR NON-AGRICULTURAL

-  Study Area
-  Cities
-  Urban Residential*
-  Rural Residential*
-  Industrial
-  Public-Institutional
-  Napa Pipe Mixed Use

OPEN SPACE

-  Agriculture, Watershed & Open Space
-  Agricultural Resource

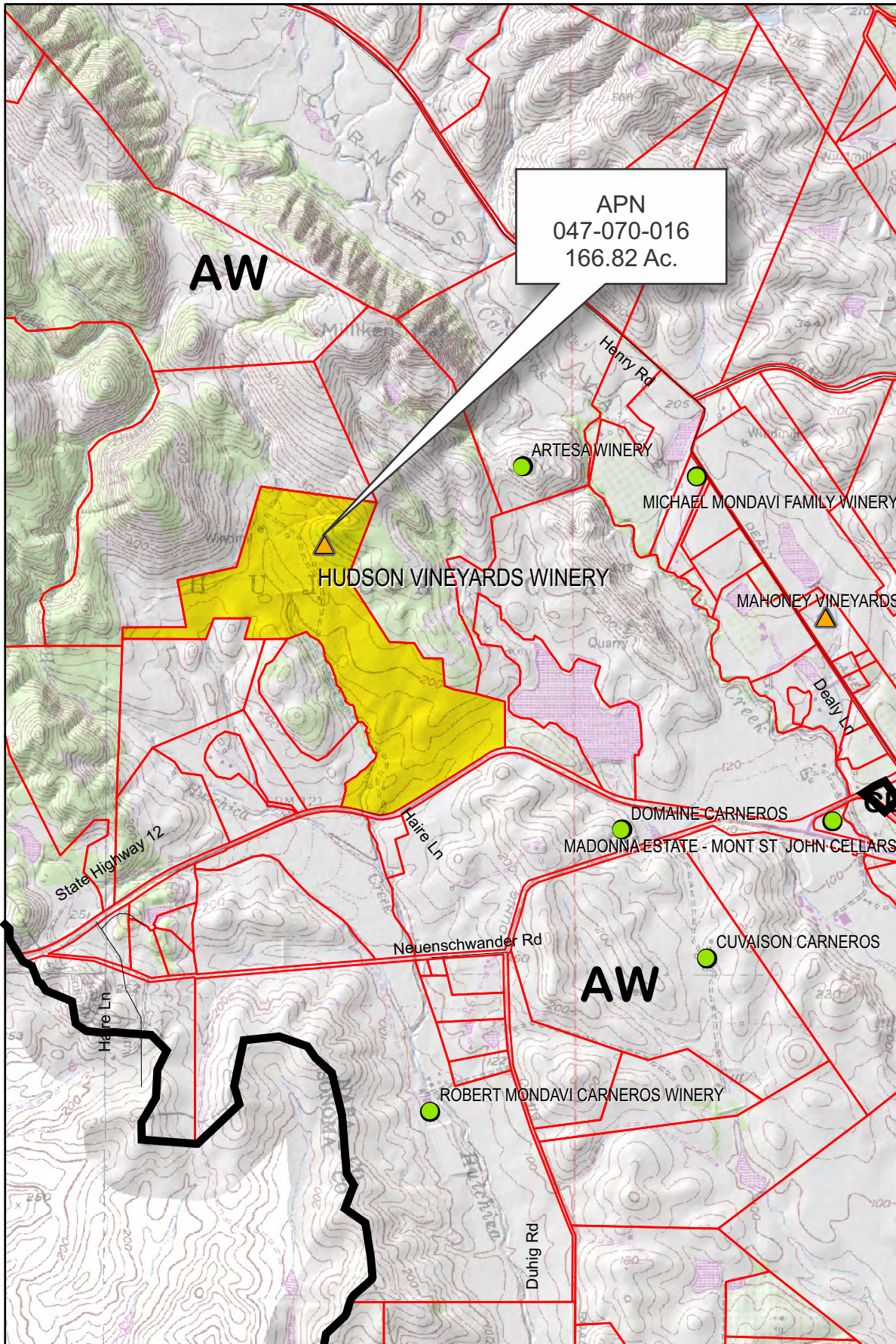
TRANSPORTATION

-  Mineral Resource
-  Limited Access Highway
-  Major Road
-  American Canyon ULL
-  City of Napa RUL
-  Landfill - General Plan
-  Secondary Road
-  Airport
-  Railroad
-  Airport Clear Zone

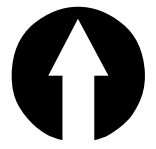
* See Action Item AG/LU-114.1 regarding agriculturally zoned areas within these land use designations






APN
047-070-016
09-25-2014
3A UP

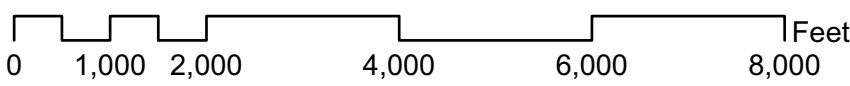
HUDSON VINEYARDS WINERY



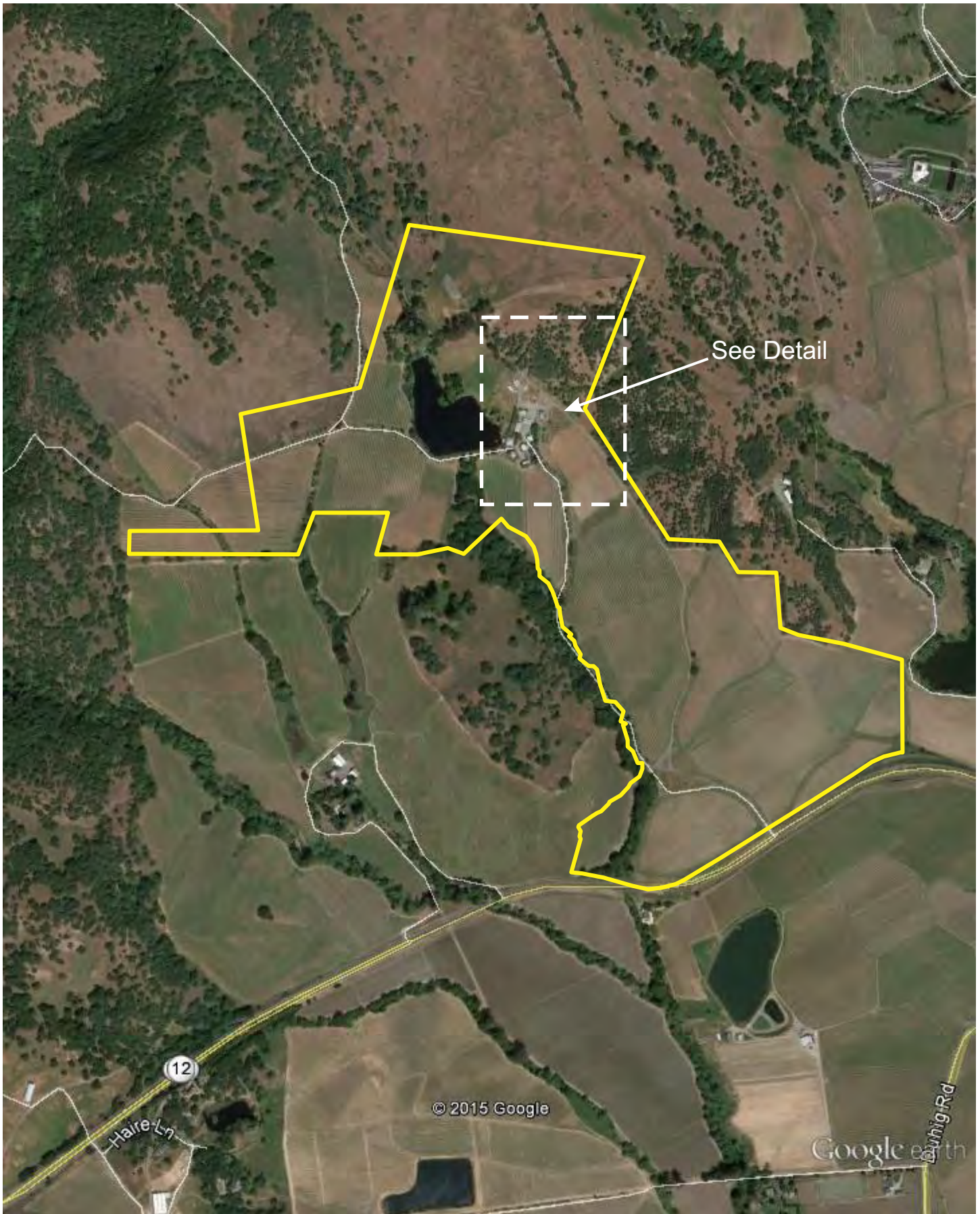
APN
047-070-016
166.82 Ac.



- Legend**
- Wineries**
- Status**
-  Pending
 -  Approved
 -  Producing
 -  Zoning
 -  Parcels



HUDSON VINEYARDS WINERY



Existing Conditions

HUDSON VINEYARDS WINERY



Existing Conditions Detail

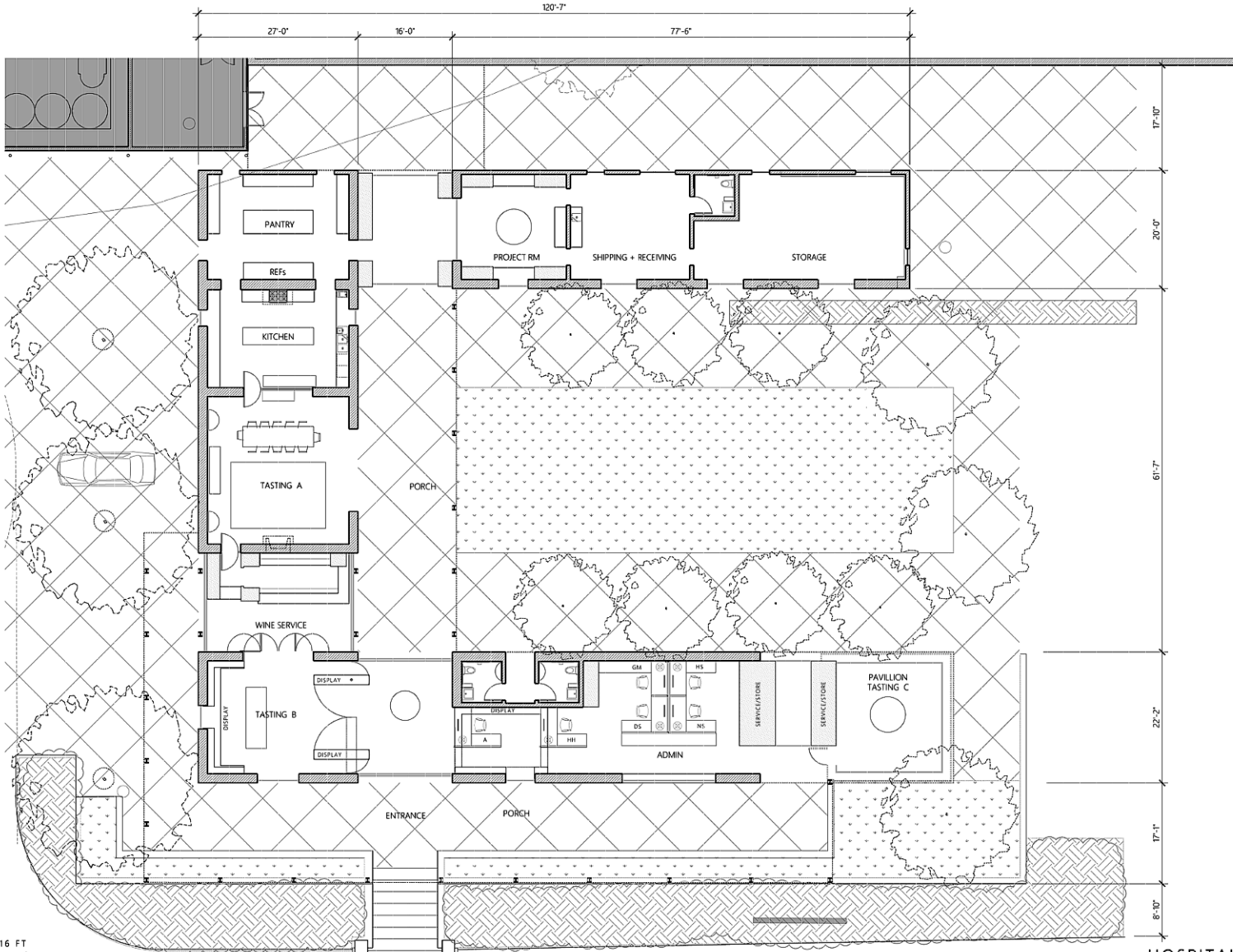
HUDSON VINEYARDS WINERY

HUDSON VINEYARD WINERY

5398 Carneros Hwy
Napa, California 94513
APN 047-070-016

FORREST ARCHITECTS

www.nedforrest.com
525 Broadway
Sonoma, California 94976
mail@nedforrest.com

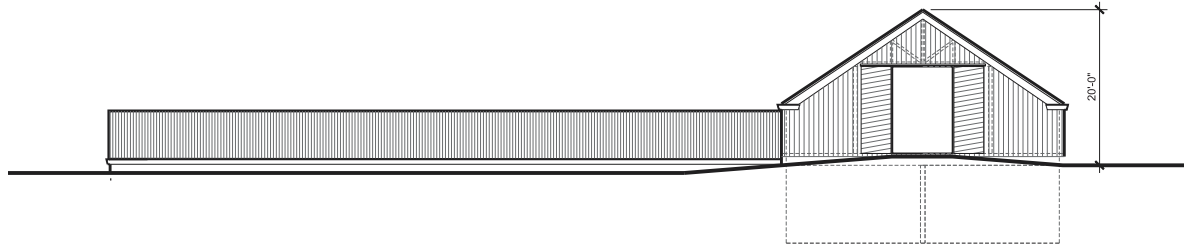


HUDSON VINEYARD WINERY

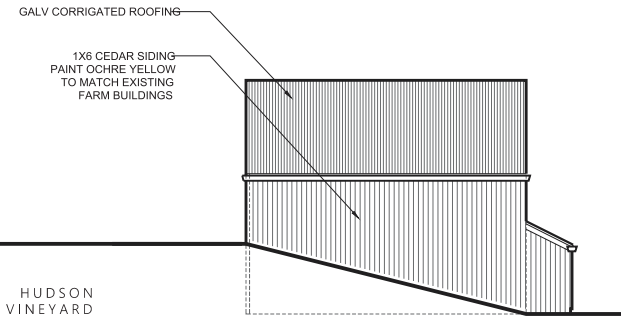
DATE
14/02/1

HOSPITALITY PLAN A1.21 ^{REVISED}

HUDSON VINEYARDS WINERY



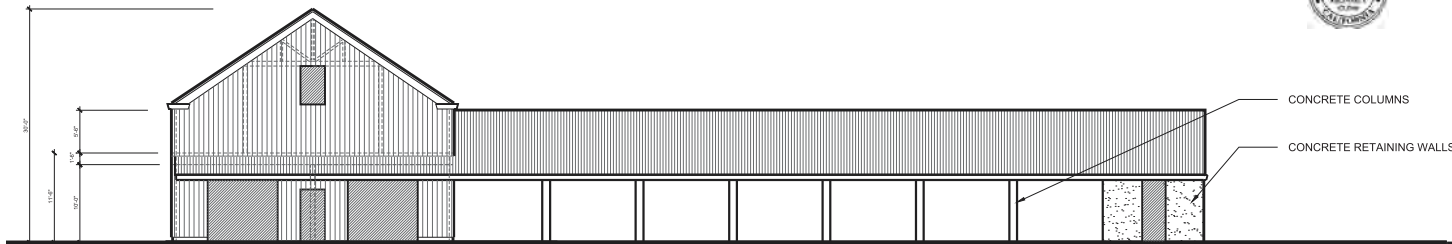
④ EAST ELEVATION



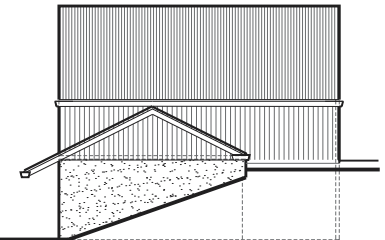
③ NORTH ELEVATION

HUDSON
VINEYARD
WINERY
5398 Carneros Hwy
Napa,
California
94513
APN 047-070-016

FORREST
ARCHITECTS
www.nedforrest.com
525 Broadway
Sonoma
California
95476
mail@nedforrest.com



② WEST ELEVATION



① SOUTH ELEVATION



BARN ELEVATIONS

HUDSON VINEYARDS WINERY

HUDSON VINEYARD WINERY
5398 Carneros Hwy
Napa, California 94513
APH 047-070-016

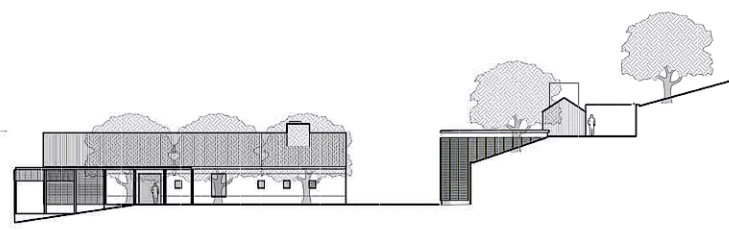
FORREST ARCHITECTS
www.nedforrest.com
525 Broadway
Sonoma, California 94976
mail@nedforrest.com



HUDSON VINEYARD WINERY

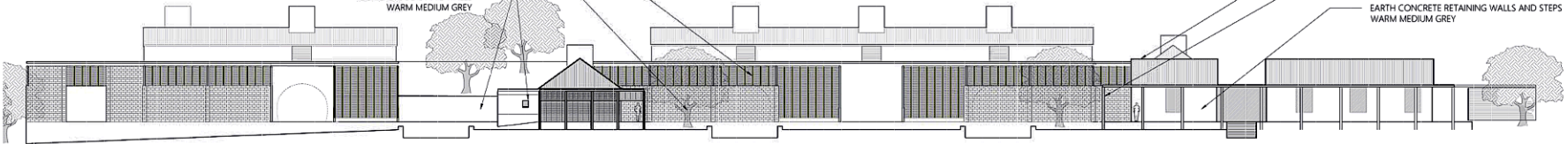
DATE 141021

TO RIDGE @ 21'-0"
TO PORCH @ 13'-0"
0'-0"



- GALVANIZED PERFORATED SCREEN
- CONCRETE EARTH WALLS WARM MEDIUM GREY
- WINDOWS AND DOORS CHARCOAL
- CONCRETE SOIL NAIL WALLS WARM MEDIUM GREY
- GALVANIZED CORRUGATED ROOFING
- STEEL COLUMNS CHARCOAL
- EARTH CONCRETE RETAINING WALLS AND STEPS WARM MEDIUM GREY

③ SOUTH ELEVATION OFFICE + FERMENTATION BUILDING

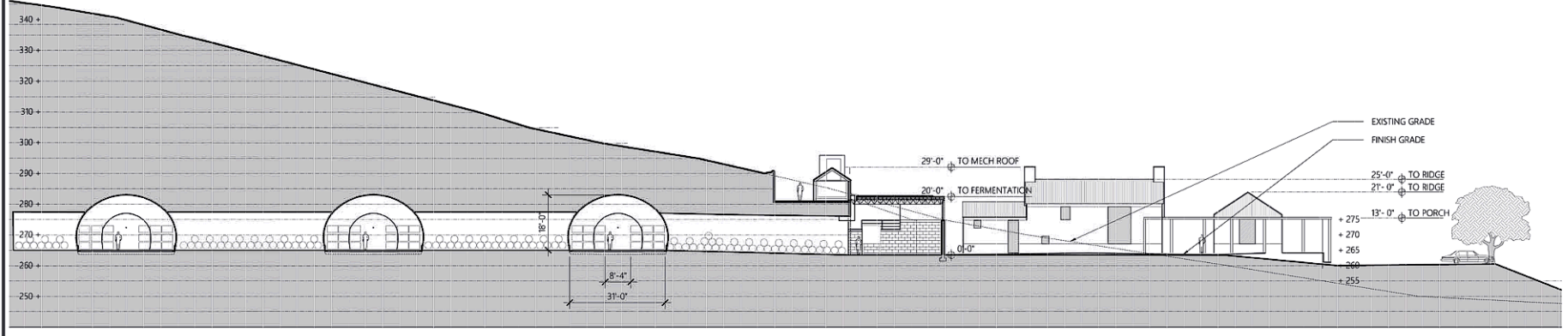


FERMENTATION N

OFFICE

② WEST ELEVATION FERMENTATION S WITH MECHANICAL SHED ABOVE

HOSPITALITY + SALES BUILDING



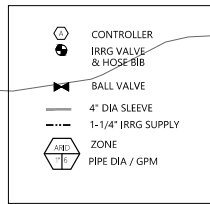
0 8 16 32 FT
SCALE 1/32" = 1'-0"

① SECTION LOOKING SOUTH TO NORTH ELEVATION HOSPITALITY

PROJECT ELEVATIONS **A3.21** REVISED

HUDSON VINEYARDS WINERY

IRRIGATION LEGEND



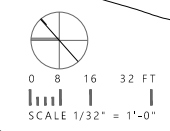
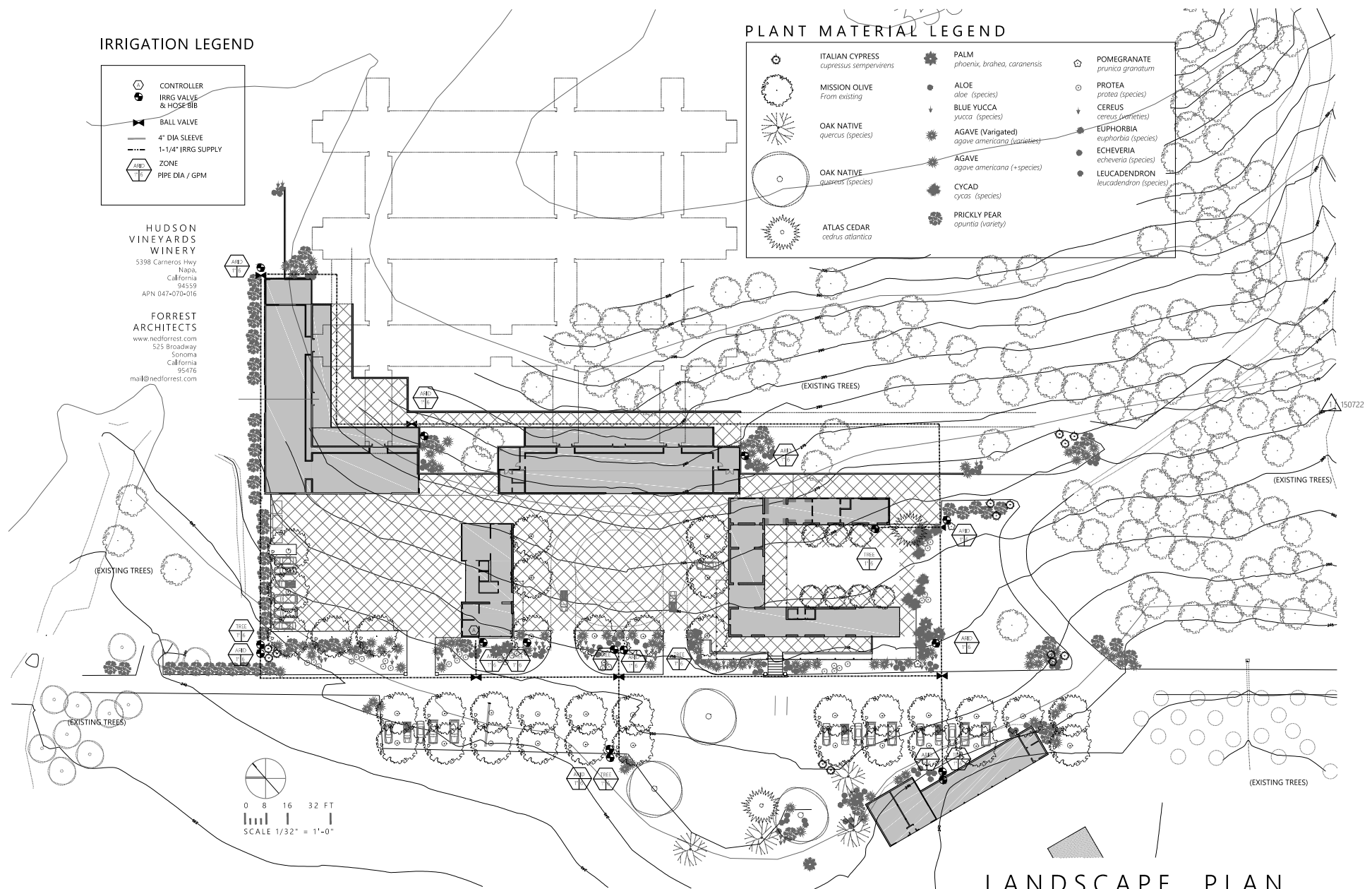
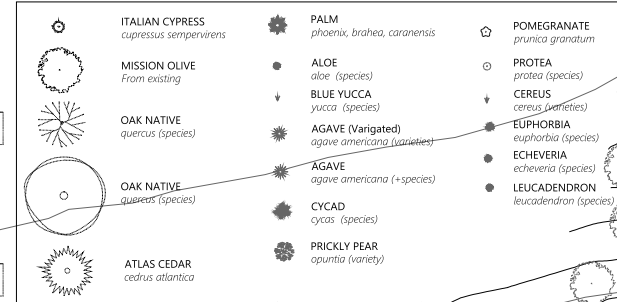
HUDSON VINEYARDS WINERY

5398 Carneros Hwy
Napa, California
94559
APN 047-070-016

FORREST ARCHITECTS

www.nedforrest.com
525 Broadway
Sonoma, California
95476
mail@nedforrest.com

PLANT MATERIAL LEGEND



LANDSCAPE PLAN